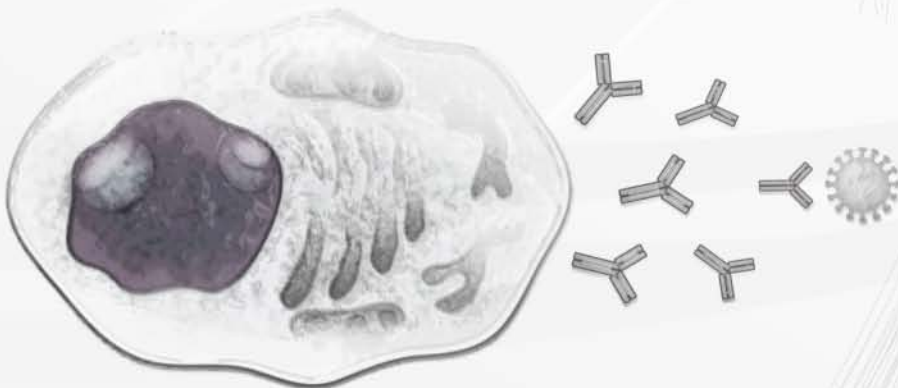


Adaptive Immunity



Antibodies

Quality Antibodies
Quality Results





The Company

GeneTex produces high quality antibodies validated through extensive research, development, and testing. Our staff and researchers have collectively earned a trusted reputation from the research community for the quality and reliability of our antibodies. The secret to our success is the complementation of scientific expertise and production mastery in our state-of-the-art laboratory and animal facility.

Our facility provides large-scale antibody production capabilities, which employ highly specific antigen affinity purification. This has facilitated the establishment of a comprehensive antibody collection covering a wide spectrum of research fields.

Because of GeneTex's extensive experience in antibody manufacturing, we are uniquely able to serve the demands of the scientific community by providing accurate technical support and reliable customer service.



Table of Contents

Adaptive Immunity	02
Antigen Presentation	03
T Cells	07
T Cell Receptor Signaling.....	13
B Cells	18
B Cell Receptor Signaling.....	21

Application Key

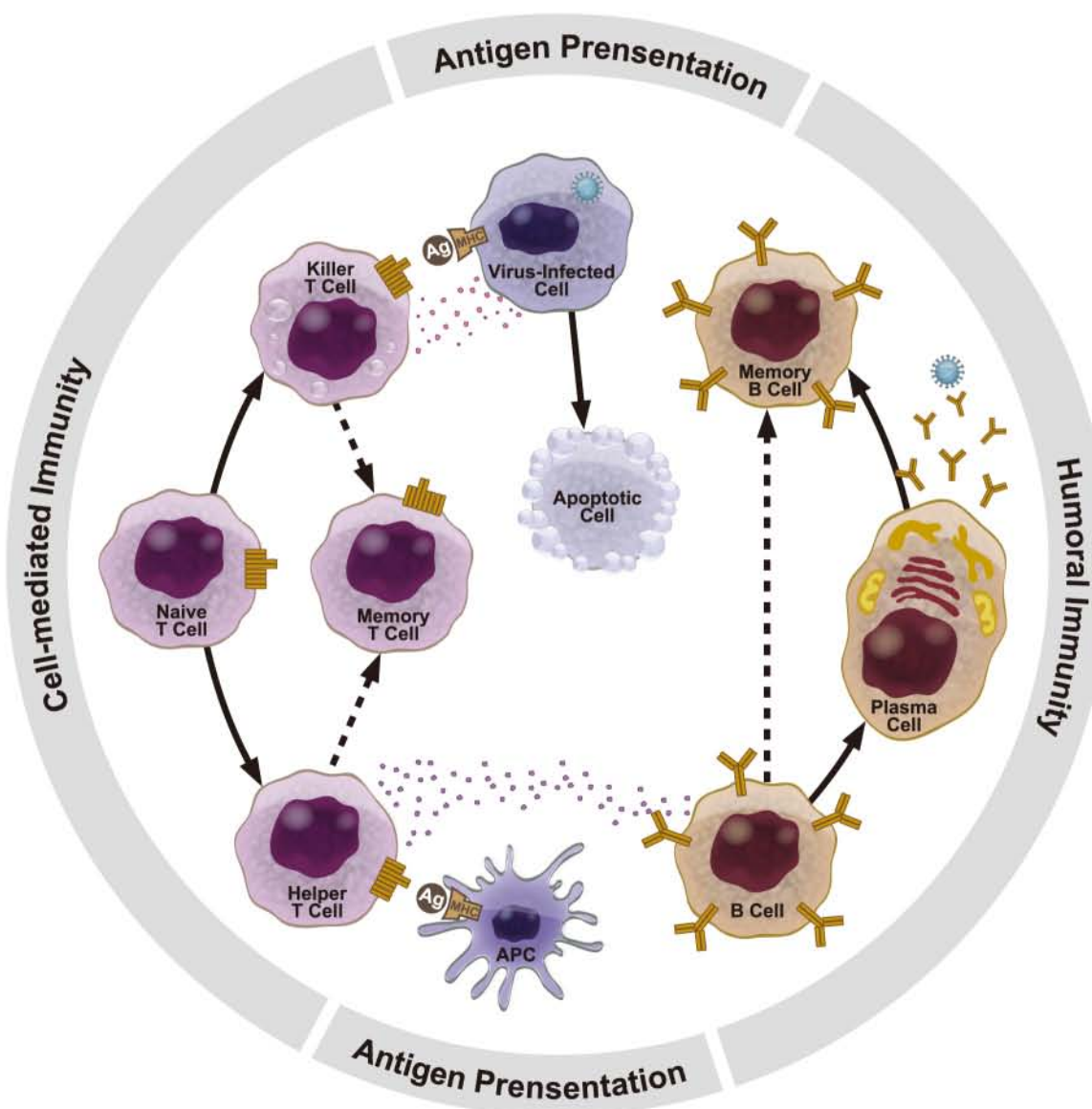
- Blocking** - Blocking
- Dot** - Dot blot
- ELISA** - Enzyme-linked immunosorbent assay
- FACS** - Fluorescence-activated cell sorting
- FunS** - Functional study
- ICC/IF** - Immunocytochemistry / Immunofluorescence
- IHC** - Immunohistochemistry
- IHC-Fr** - Immunohistochemistry (Frozen sections)
- IHC-M** - Immunohistochemistry (Methylmethacrylate sections)
- IHC-P** - Immunohistochemistry (Paraffin-embedded sections)
- IP** - Immunoprecipitation
- RIA** - Radioimmunoassay
- WB** - Western Blot

Host & Reactivity Key

- Chmp** - Chimpanzee
- Cow** - Cow
- Dog** - Dog
- Gpig** - Guinea pig
- Gt** - Goat
- Hm** - Hamster
- Hu** - Human
- Mk** - Monkey
- Ms** - Mouse
- Pig** - Pig
- Rat** - Rat
- Rb** - Rabbit

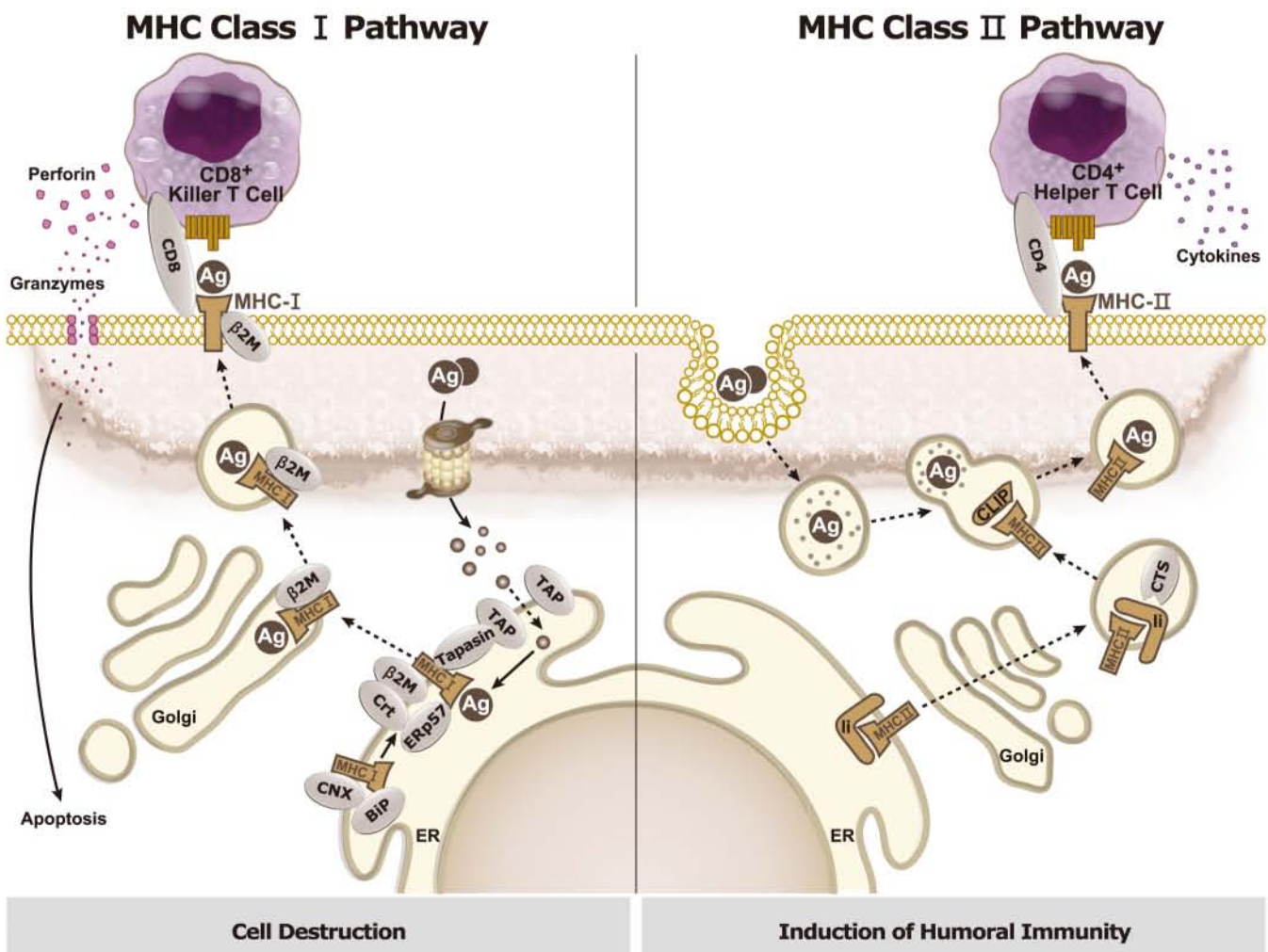
Adaptive Immunity

The immune system is composed of innate and adaptive immunities. Unlike the nonspecific defense mechanism of innate responses, the adaptive immune responses are highly antigen-specific processes that neutralize pathogens. The adaptive immune system is activated by the innate immune system and provides a stronger attack by recognizing and remembering specific pathogens.



Antigen Presentation

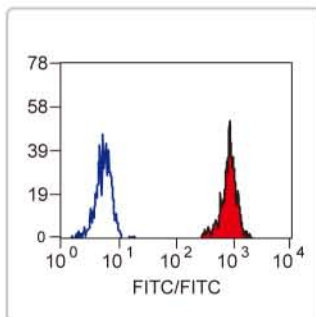
Antigen presentation is an essential process for adaptive immune responses. Nearly all cells express Major Histocompatibility (MHC) class I molecules, which can present fragments of intracellular pathogens to killer T cells upon infection. This leads to the destruction of the infected cell. Three types of professional antigen presenting cells (APCs), macrophages, dendritic cells and B-cells, express MHC Class II. These APCs are responsible for capturing extracellular pathogens and presenting antigens for recognition by helper T cells. Antigen-recognition by T cells triggers further adaptive immune responses, including activation and differentiation of T and B cells. Dysfunction of antigen presentation results in immune disorders, including allergies, autoimmunity or immunodeficiency.



Human class I MHC

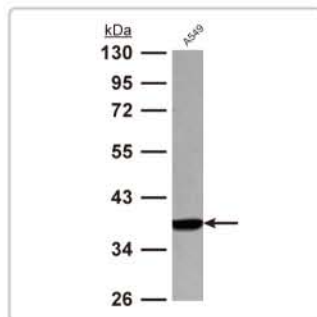
★ Conjugated antibodies available for FACS

Cat. No.	Product	Host & Clonality	Reactivity	Application
★ GTX27855	HLA-A, HLA-B + HLA-C antibody [W6/32]	Ms mAb	Hu	ELISA, FACS, IHC-Fr
★ GTX22217	HLA Class I antibody [MEM-123]	Ms mAb	Hu, Cow, Mk	Dot, ELISA, FACS, IP
★ GTX29090	HLA Class I antibody [MEM-147]	Ms mAb	Hu	FACS, IP, WB
GTX23975	HLA Class I antibody [MEM-81]	Ms mAb	Hu	FACS
GTX114080	HLA-A antibody [N1C2]	Rb pAb	Hu	IP, WB
GTX61514	HLA-A antibody [EP1395Y]	Rb mAb	Hu	ELISA, FACS, ICC/IF, IHC-Fr, IHC-P, IP, WB, IHC-Wm
★ GTX80221	HLA-A2 antibody [BB7.2] (PE)	Ms mAb	Hu	FACS, IP
GTX114151	HLA-B antibody	Rb pAb	Hu	IHC-P, WB
GTX81138	HLA-B antibody, N-term	Rb pAb	Hu	ELISA, FACS, IHC, IHC-P, WB
GTX62870	HLA-B antibody [EPR2623(2)]	Rb mAb	Hu	IHC-P, WB
GTX116088	HLA-E antibody	Rb pAb	Hu	IHC-P, WB
GTX81202	HLA-E antibody, Internal	Rb pAb	Hu	ELISA, WB
★ GTX11820	HLA-E antibody [MEM-E/07]	Ms mAb	Hu	FACS, IHC-P, IP
GTX23984	HLA-E antibody [MEM-E/06]	Ms mAb	Hu	FACS, IHC-P, IP
GTX11821	HLA-E antibody [MEM-E/08]	Ms mAb	Hu	FACS, IP
GTX22216	HLA-E antibody [MEM-E/02]	Ms mAb	Hu	IHC-P, WB
GTX101149	HLA-G antibody [N1C3]	Rb pAb	Hu	WB
★ GTX27759	HLA-G antibody [MEM-G/1]	Ms mAb	Hu	IHC, IHC-P, WB
GTX78394	HLA-G antibody [MEM-G/2]	Ms mAb	Hu	IHC-P
GTX21887	HLA-G antibody [MEM-G/4]	Ms mAb	Hu	WB
★ GTX27758	HLA-G antibody [MEM-G/9]	Ms mAb	Hu, NHuPrm	ELISA, FACS, IHC-Fr, WB
★ GTX24570	HLA-G antibody [MEM-G/11]	Ms mAb	Hu	ELISA, FACS, IP
★ GTX80268	HLA-G antibody [4H84]	Ms mAb	Hu	ELISA, ICC/IF, IHC-P, IP, WB
★ GTX80304	HLA-G antibody [01G]	Ms mAb	Hu	ELISA, FACS, ICC/IF, IHC-Fr, IP
★ GTX80260	HLA-G antibody [5A6G7]	Ms mAb	Hu	ELISA, FACS, ICC/IF, IHC-Fr, IHC-P, WB
★ GTX80256	HLA-G antibody [87G]	Ms mAb	Hu	ELISA, FACS, IHC-Fr, Functional Assay
★ GTX80288	HLA-G antibody [2A12]	Ms mAb	Hu	FACS, IHC-Fr, IHC-P, WB



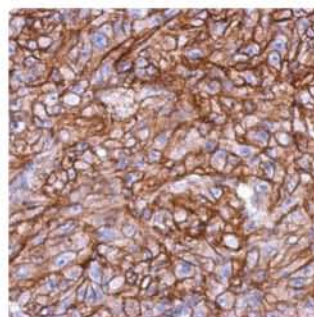
HLA-ABC antibody [W6/32] (Biotin) (GTX76544)

FACS analysis of human peripheral blood monocytes with anti-HLA-class I antibody.



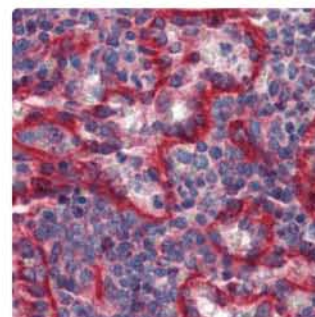
HLA-A antibody [N1C2] (GTX114080)

WB analysis of HLA-A expression in A549 cells.



HLA-B antibody (GTX114151)

IHC-P analysis of HLA-B expression in Mahlarvu xenograft.



HLA-E antibody [MEM-E/07] (GTX11820)

IHC-P analysis of HLA-E expression in human spleen tissue.

Human class II MHC

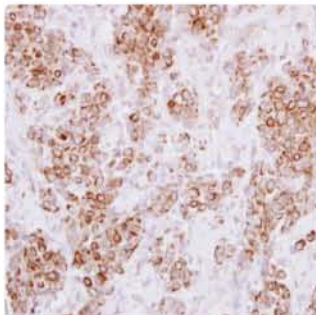
★ Conjugated antibodies available for FACS

Cat. No.	Product	Host & Clonality	Reactivity	Application
GTX76198	HLA-DP/DQ/DR antibody [WR18]	Ms mAb	Hu	FACS, IHC-P, Functional Assay
★ GTX40612	HLA-DP/DQ/DR antibody [Bu26]	Ms mAb	Hu	FACS
GTX114939	HLA-DMA antibody	Rb pAb	Hu	IHC-P, WB
GTX108492	HLA-DMB antibody [C2C3], C-term	Rb pAb	Hu	IHC-P, WB
GTX104414	HLA-DPA1 antibody	Rb pAb	Hu	ICC/IF, IHC-P, WB
GTX45903	HLA-DPA1 antibody, Internal	Rb pAb	Hu	WB
GTX102763	HLA-DPB1 antibody	Rb pAb	Hu	WB
GTX54086	HLA-DPB1 antibody	Rb pAb	Hu, Ms	IHC, IHC-P, WB
GTX104461	HLA-DQB2 antibody	Rb pAb	Hu	IHC-P, WB
GTX113459	HLA-DR antibody [N2C3]	Rb pAb	Hu	WB

Human class II MHC

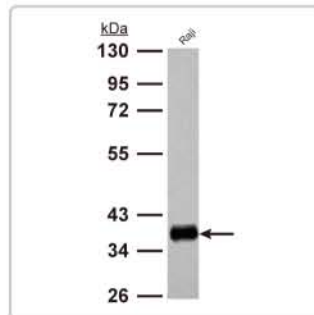
☉ Reference ★ Conjugated antibodies available for FACS

Cat. No.	Product	Host & Clonality	Reactivity	Application
☉ ★ GTX76430	HLA-DR antibody [YE2/36HLK]	Rat mAb	Hu, Ms	FACS, ICC/IF, IHC-Fr, IHC-P
★ GTX78432	HLA-DR antibody [MEM-12]	Ms mAb	Hu	FACS, IP, WB
☉ GTX17270	HLA-DR antibody [423L]	Ms mAb	Hu	FACS, ICC/IF
GTX28143	HLA-DR antibody [HL-39]	Ms mAb	Hu	FACS, IP
GTX113732	HLA-DRA antibody [N2C3]	Rb pAb	Hu	ICC/IF, IHC-P, WB
GTX101865	HLA-DRA antibody	Rb pAb	Hu	IHC-P, WB
GTX62296	HLA-Dra antibody [EPR3692]	Rb mAb	Hu	FACS, ICC/IF, IHC-P, IP, WB
GTX63171	HLA-Dra antibody [EPR3691(2)]	Rb mAb	Hu	WB
GTX104919	HLA-DRB1 antibody [N1C3]	Rb pAb	Hu	IHC-P, WB
GTX102047	HLA DR beta antibody [N1C3]	Rb pAb	Hu	WB



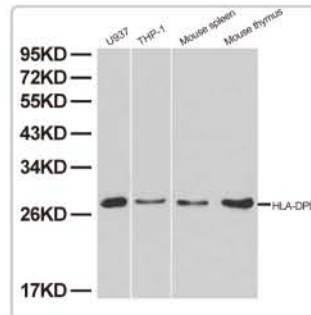
HLA-DMA antibody (GTX114939)

IHC-P analysis of HLA-DMA expression in human breast carcinoma.



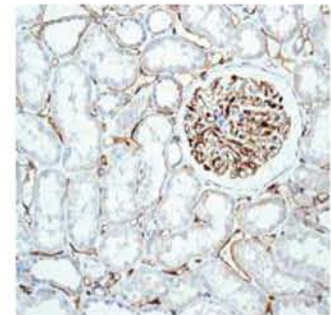
HLA-DPA1 antibody (GTX104414)

WB analysis of HLA-DPA1 protein in Raji cells.



HLA-DPB1 antibody (GTX54086)

WB analysis of HLA-DPB1 protein in the indicated cell lines.



HLA-Dra antibody [EPR3692] (GTX62296)

IHC-P analysis of HLA-Dra expression in human kidney tissue.

Rodent class I MHC

☉ Reference ★ Conjugated antibodies available for FACS

Cat. No.	Product	Host & Clonality	Reactivity	Application
GTX40355	MHC Class I H-2b, d, p, q, w16 antibody [B231M]	Rat mAb	Ms	FACS, IHC-Fr
GTX39707	MHC Class I H-2B/D/P/Q/W16 antibody [ER-HR52]	Rat mAb	Ms	FACS, IHC-Fr
GTX74621	MHC Class I H-2Dd antibody [D1]	Ms mAb	Ms	FACS, CTA
GTX39706	MHC Class I H-2Dd/2Kv/2K/Q/S antibody [ER-MP42]	Rat mAb	Ms	FACS, IHC-Fr
GTX39705	MHC Class I H-2Kb antibody [AF6-88.5]	Ms mAb	Ms	FACS, IHC-Fr, IP
GTX74622	MHC Class I H-2Kd antibody [K3]	Ms mAb	Ms	FACS
GTX39702	MHC Class I RT1A antibody [F16-4-4]	Ms mAb	Rat	FACS, IHC-Fr
★ GTX75168	MHC class I RT1a antibody [MRC OX-27]	Ms mAb	Rat	FACS, IHC-Fr
☉ ★ GTX39699	MHC Class I RT1A antibody [OX-18]	Ms mAb	Rat	ELISA, FACS, ICC/IF, IHC-Fr, IP
GTX75207	MHC class I RT1Aa antibody [R2/15S] (ready-to-use)	Rat mAb	Rat	FACS, HA
★ GTX39697	MHC Class I RT1Ac antibody [OX-27]	Ms mAb	Rat	FACS, IHC-Fr
GTX74737	MHC Class I RT1Au antibody [NR3/31] (ready-to-use)	Rat mAb	Rat	FACS
GTX74571	MHC Class I RT1Bu antibody [P7/7] (ready-to-use)	Rat mAb	Ms, Rat	FACS, IHC-Fr

Rodent class II MHC

☉ Reference ★ Conjugated antibodies available for FACS

Cat. No.	Product	Host & Clonality	Reactivity	Application
GTX28351	MHC class II antibody [3D6]	Ms mAb	Rat	FACS, ICC/IF, IHC-Fr, IP, WB
GTX15630	MHC class II antibody [ER-TR3]	Rat mAb	Ms	FACS, IHC-P
GTX74960	MHC Class II antibody [IBL-3/5]	Rat mAb	Ms	FACS, IHC-Fr
GTX52450	MHC class II antibody [MAB0874]	Rat mAb	Ms	Blocking, FACS, IHC-Fr, IP
★ GTX39684	MHC Class II H-2I-Ab/S antibody [OX-3]	Ms mAb	Ms, Rat	FACS, IHC-Fr, IHC-P
☉ ★ GTX39680	MHC Class II H-2I-Ak/S antibody [OX-6]	Ms mAb	Ms, Rat	FACS, ICC/IF, IHC-Fr, IHC-P, WB
☉ ★ GTX39681	MHC Class II H-2I-Ak/S antibody [OX-6]	Ms mAb	Ms, Rat	FACS, ICC/IF, IHC-Fr, IHC-P, WB
GTX39679	MHC Class II H-2I-Ak/S/R antibody [ER-TR2]	Rat mAb	Ms	FACS, IHC-Fr
GTX39670	MHC Class II RT1B antibody [F17-23-2]	Ms mAb	Rat	FACS, IHC-Fr
GTX76648	MHC class II RT1B antibody [HIS 19 or 4C10]	Ms mAb	Rat	FACS, IHC-Fr, IHC-P, IP, IHC-R

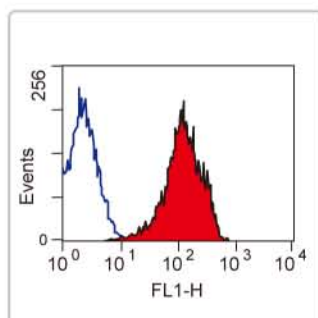
Rodent class II MHC

Cat. No.	Product	Host & Clonality	Reactivity	Application
GTX39666	MHC Class II RT1Ba/C antibody [OX-76]	Ms mAb	Rat	FACS
GTX39664	MHC Class II RT1Bu/L antibody [OX-3]	Ms mAb	Ms, Rat	FACS, IHC-Fr, IHC-P
GTX39665	MHC Class II RT1Bu/L antibody [OX-3]	Ms mAb	Ms, Rat	FACS, IHC-Fr, IHC-P
GTX39662	MHC Class II RT1D antibody [OX-17]	Ms mAb	Rat	FACS, IHC-Fr
GTX39663	MHC Class II RT1D antibody [OX-17]	Ms mAb	Rat	FACS, IHC-Fr

Molecules for antigen processing

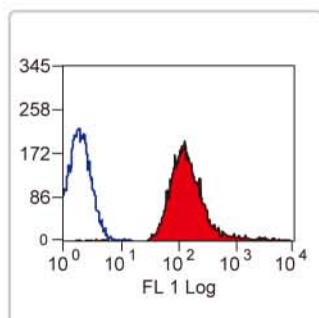
☉ Reference ★ Conjugated antibodies available for FACS

Cat. No.	Product	Host & Clonality	Reactivity	Application
GTX129963	TAP1 antibody	Rb pAb	Hu	WB
☉ GTX13516	TAP1 antibody	Rb pAb	Hu, Rat	ICC/IF, IHC, IP, WB
GTX22099	TAP1 antibody	Rb pAb	Hu	ELISA, FACS, IP, WB
GTX10356	TAP1 antibody [53H8]	Ms mAb	Hu	ELISA, ICC/IF, IP, WB
GTX80332	TAP1 antibody [53H8]	Ms mAb	Hu	ELISA, ICC/IF, IP, WB
☉ ★ GTX43505	CD81 antibody [1D6]	Ms mAb	Hu, Chmp, Goat, Shp	ELISA, FACS, ICC/IF, IHC-P, IP, WB
GTX13518	Tapasin antibody	Rb pAb	Hu, Ms, Cow, Rat	IP, WB
☉ GTX110477	CD74 antibody [N1N2], N-term	Rb pAb	Hu, Ms, Rat	IHC-P, WB
GTX111929	CD74 antibody	Rb pAb	Hu	IHC-P, WB
GTX53927	CD74 antibody	Rb pAb	Hu	IHC, WB
GTX62441	CD74 antibody [EPR4065]	Rb mAb	Hu	ICC/IF, IHC, IHC-P, IP, WB
GTX62456	CD74 antibody [EPR4064]	Rb mAb	Hu	ICC/IF, IHC, IHC-P, WB
GTX82925	CD74 antibody [AT14/19]	Ms mAb	Hu	FACS, ICC/IF, IP
☉ GTX73535	CD74 antibody [LN2] (ready-to-use)	Ms mAb	Hu	IHC-Fr, IHC-P



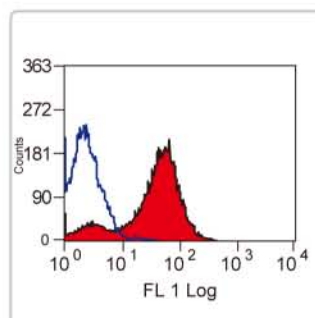
MHC Class I RT1A antibody [OX-18] (GTX39699)

FACS analysis of rat spleen cells with Mouse anti-Rat MHC Class I (RT1A) antibody.



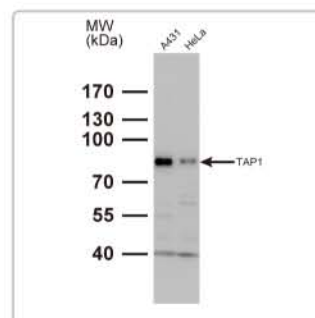
MHC Class I RT1Ac antibody [OX-27] (FITC) (GTX43397)

FACS analysis of rat spleen cells with Mouse anti-Rat RT1Ac antibody.



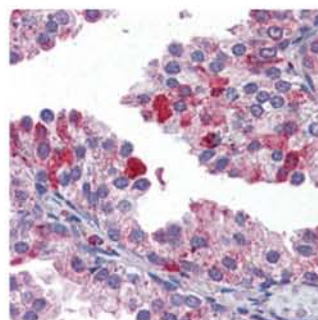
MHC Class II H-2I-Ak/s antibody [OX-6] (FITC) (GTX43391)

FACS analysis of rat spleen cells with Mouse anti-H-2I-Ak/s antibody.



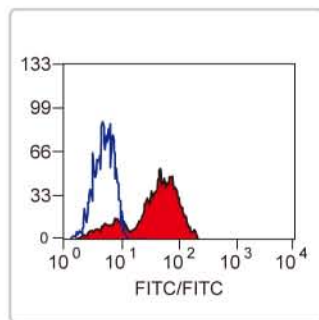
TAP1 antibody (GTX129963)

WB analysis of TAP1 protein in the indicated cell lines.



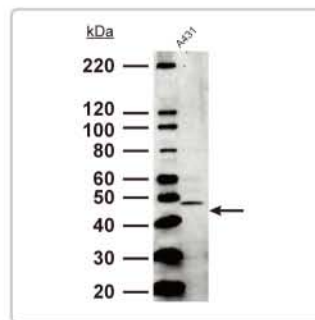
TAP1 antibody (GTX13516)

IHC-P analysis of TAP1 expression in human prostate tissue.



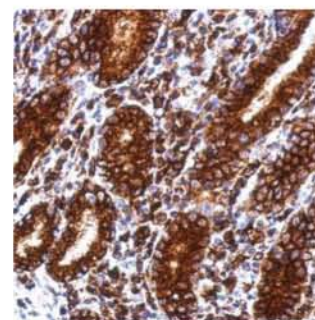
CD81 antibody [1D6] (GTX43505)

FACS analysis of human peripheral blood lymphocytes with anti-Human CD81 antibody.



Tapasin antibody (GTX13518)

WB analysis of Tapasin protein in A431 cells.



CD74 antibody (GTX111929)

IHC-P analysis of CD74 expression in human colon carcinoma.

Selected Application References

J Pineal Res. 2014 Oct;57(3):248-61.

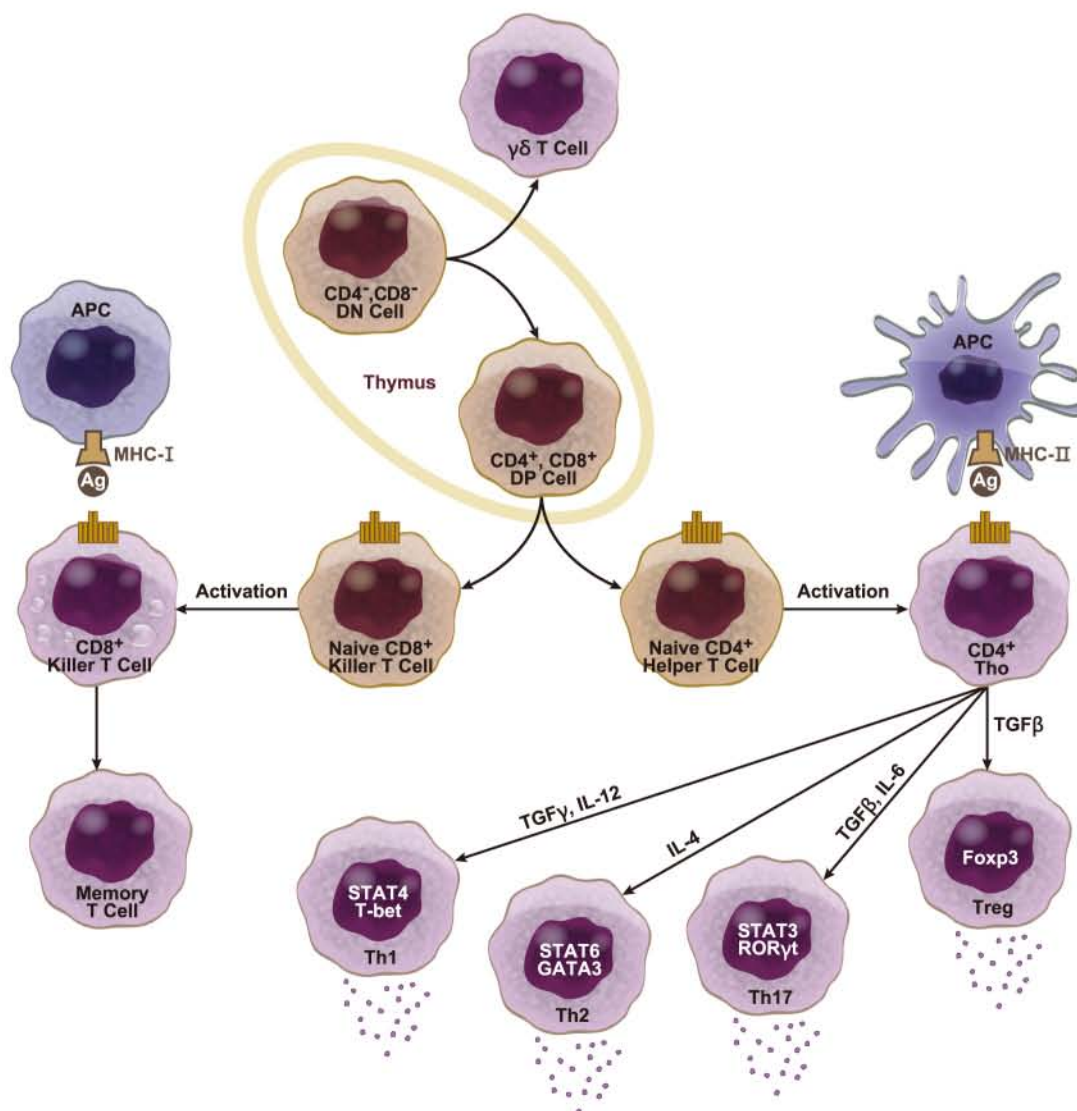
Nephrol Dial Transplant. 2013 Dec;28(12):3004-13.

Immunology. 2008 Mar;123(3):438-46.

J Virol. 2006 Dec;80(24):12141-8.

T Cells

T cells are a subset of lymphocytes that play an important role in the immune response. T cell precursors develop in the bone marrow and mature in the thymus through a process of positive and negative selection. Each T cell specifically recognizes a particular antigen only when it is presented by the APCs, which then triggers a signaling cascade that induces proliferation, differentiation and cytokine production. TCR signaling is not only required for T cell differentiation and cell-mediated immunity, but also involved in the development of humoral immunity by facilitating the activation of B cells.



T cell markers

★ Conjugated antibodies available for FACS

Cat. No.	Product	Host & Clonality	Reactivity	Application
GTX101858	CD2 antibody [C1C3]	Rb pAb	Hu	WB
GTX101874	CD2 antibody [N1C1]	Rb pAb	Hu	WB
GTX12099	CD2 antibody	Rb pAb	Ms, Rat	WB
★ GTX28089	CD2 antibody [MEM-65]	Ms mAb	Hu	FACS, IP
★ GTX28360	CD2 antibody [LT2]	Ms mAb	Hu	FACS, IP
GTX28670	CD2 antibody [B336 (HuLy-m1)]	Ms mAb	Hu	FACS, IHC-Fr
GTX28686	CD2 antibody [MT9-10]	Ms mAb	Hu	IHC-Fr, IP, WB
★ GTX42299	CD2 antibody [RPA-2.10]	Ms mAb	Hu, Pig, Bb, Chmp, RMK, CIMK, Maca	FACS, IHC-Fr
★ GTX42300	CD2 antibody [OX-34]	Ms mAb	Rat	FACS, ICC/IF, IHC-Fr, IHC-P, IP
GTX42302	CD2 antibody [Mac288]	Rat mAb	Hrs	FACS, IHC-Fr
GTX42303	CD2 antibody [LT2]	Ms mAb	Hu, Chmp, RMK, CIMK	FACS, IHC-Fr, IP, Functional Assay
GTX42304	CD2 antibody [I/35A]	Ms mAb	Goat, Shp	FACS, IHC-Fr, IP
GTX42306	CD2 antibody [CC42]	Ms mAb	Goat, Bov	FACS, IHC-Fr, IHC-P, IP
GTX44242	CD2 antibody [6F10.3]	Ms mAb	Hu	
GTX44243	CD2 antibody [39C1.5]	Rat mAb	Hu	
GTX62240	CD2 antibody [EPR3693]	Rb mAb	Hu	ICC/IF, WB
★ GTX74804	CD2 antibody [AT37]	Rat mAb	Ms	ELISA, FACS, IP
GTX75123	CD2 antibody [MRC OX-34]	Ms mAb	Rat	FACS, IHC-Fr, IHC-P, IP
GTX75366	CD2 antibody [AB75]	Ms mAb	Hu	IHC-P
GTX76137	CD2 antibody [OX-54]	Ms mAb	Rat	FACS, IHC-Fr
GTX76138	CD2 antibody [OX55]	Ms mAb	Rat	FACS, IHC-Fr
GTX84724	CD2 antibody [4E4]	Ms mAb	Hu	FACS, WB
GTX84725	CD2 antibody [9D1]	Ms mAb	Hu	IHC-P, WB
CD3 see page 14				
GTX105771	CD5 antibody [N1C2]	Rb pAb		WB-Ag
GTX17132	CD5 antibody [4C7] (ready-to-use)	Ms mAb	Hu	IHC-F, IHC-Fr, IHC-P
GTX19717	CD5 antibody [LT1]	Ms mAb	Hu	Blocking, IHC
GTX19766	CD5 antibody [BL1a]	Ms mAb	Hu	FACS, IP
★ GTX21248	CD5 antibody [CRIS1]	Ms mAb	Hu	FACS, IP, WB
★ GTX29189	CD5 antibody [MEM-32]	Ms mAb	Hu	FACS, IP, WB
★ GTX39379	CD5 antibody [1H6/8]	Ms mAb	Pig	FACS, IP, WB
★ GTX41927	CD5 antibody [YTS 121.5.2]	Rat mAb	Ms	FACS
GTX41929	CD5 antibody [YTS 121.5.2] (Azide free)	Rat mAb	Ms	FACS, Functional Assay
★ GTX41931	CD5 antibody [YKIX322.3]	Rat mAb	Dog	FACS, IHC-Fr, IP
★ GTX41932	CD5 antibody [UCHT2]	Ms mAb	Hu, Chmp, RMK, CIMK, Mrt	FACS, IHC-Fr, WB
★ GTX41933	CD5 antibody [OX-19]	Ms mAb	Rat	FACS, IHC-Fr, IHC-P, IP
★ GTX41935	CD5 antibody [FE1.1B11]	Ms mAb	Cat	FACS, IHC-Fr
★ GTX41937	CD5 antibody [CC17]	Ms mAb	Goat, Shp, Bov	FACS, IHC-Fr, IP
★ GTX41939	CD5 antibody [25.91]	Ms mAb	Shp	FACS, IHC-Fr, IP
★ GTX41940	CD5 antibody [2-176]	Ms mAb	Chk	FACS, IHC-Fr, IP
★ GTX44179	CD5 antibody [UCHT-2]	Ms mAb	Hu	
GTX52627	CD5 antibody [10K13]	Ms mAb	Hu	FACS, WB
GTX53115	CD5 antibody [5L31]	Rat mAb	Ms	FACS, IHC
GTX60631	CD5 antibody [6A11]	Ms mAb	Hu	ELISA, FACS, WB
GTX62108	CD5 antibody [EPR2953]	Rb mAb	Hu	ICC/IF, WB
GTX62112	CD5 antibody [EP2952]	Rb mAb	Hu	ICC/IF, IHC, IHC-P, IP, WB
GTX628424	CD5 antibody [GT0012]	Ms mAb	Hu	FACS
GTX73927	CD5 antibody [4C7]	Ms mAb	Hu	IHC-P
★ GTX74905	CD5 antibody [MF7-14.5]	Ms mAb	Hu	FACS, IHC-Fr, IP
GTX74909	CD5 antibody [MF7-14.5](Azide free)	Ms mAb	Hu	FACS, IHC-Fr, IP
GTX75371	CD5 antibody [4C7]	Ms mAb	Hu	IHC-P, WB
★ GTX76271	CD5 antibody [MRC OX-19]	Ms mAb	Rat	FACS
GTX79414	CD5 antibody [SP19]	Rb mAb	Hu	IHC, IHC-P
GTX79428	CD5 antibody [SP19] (ready-to-use)	Rb mAb	Hu	IHC, IHC-P
GTX84708	CD5 antibody [2B8]	Ms mAb	Hu	FACS, ICC/IF, IHC-P, WB
GTX84709	CD5 antibody [7A7]	Ms mAb	Hu	FACS, ICC/IF, IHC, IHC-P, WB
GTX84710	CD5 antibody [6F7]	Ms mAb	Hu, Mk	FACS, WB
GTX84711	CD5 antibody [4H3]	Ms mAb	Hu	FACS, ICC/IF, IHC, WB

Pan T cell

T cell markers

Ⓢ Reference ★ Conjugated antibodies available for FACS

	Cat. No.	Product	Host & Clonality	Reactivity	Application
Nature Killer T cell	GTX104898	CD1D antibody [N2C3]	Rb pAb	Hu	WB
	GTX53911	CD1d antibody	Rb pAb	Hu, Ms, Rat	IHC, WB
	GTX42312	CD1d antibody [NOR3.2]	Ms mAb	Hu	FACS, ICC/IF, IHC, IHC-Fr, IP, WB
	GTX42314	CD1d antibody [1B1]	Rat mAb	Ms	FACS, IHC-Fr, IP
	GTX44244	CD1d antibody [NOR3.2]	Ms mAb	Hu	IHC-Fr, IP
Killer T cell	GTX37508	CD8 antibody	Rb pAb	Ms	ICC/IF, WB
	GTX37270	CD8 antibody	Rat mAb	Ms	ELISA, WB
	GTX10884	CD8 antibody [CA-8]	Ms mAb	Hu	IHC-F
	★ GTX13442	CD8 antibody [UCHT-4]	Ms mAb	Hu	FACS, IHC-Fr
	GTX14198	CD8 antibody [OKT-8]	Ms mAb	Hu	FACS
	★ GTX14216	CD8 antibody [YTS 169.4]	Rat mAb	Ms	FACS, ICC/IF, Depletion
	GTX16696	CD8 antibody [SP16]	Rb mAb	Hu	IHC, IHC-P
	Ⓢ GTX19718	CD8 antibody [LT8]	Ms mAb	Hu	Blocking
	★ GTX20049	CD8 antibody [UCHT-4]	Ms mAb	Hu	FACS, IHC
	GTX21087	CD8 antibody [MEM-31]	Ms mAb	Hu	FACS, IP
	GTX28223	CD8 antibody [MEM-87]	Ms mAb	Hu	FACS, IP
	GTX41816	CD8 antibody [YTS169.4] (Azide free)	Rat mAb	Ms	FACS, IHC-Fr
	★ GTX41817	CD8 antibody [YTS169.4]	Rat mAb	Ms	FACS, IHC-Fr
	GTX41819	CD8 antibody [YTS105.18]	Rat mAb	Ms	FACS, ICC/IF, IHC-Fr
	GTX41820	CD8 antibody [YTC182.20]	Rat mAb	Hu, RMK, CIMK	FACS, IHC-Fr
	GTX41823	CD8 antibody [CT6]	Ms mAb	Gpig	FACS
	GTX41825	CD8 antibody [Bu88]	Ms mAb	Hu	FACS
	GTX61477	CD8 antibody [EP1150Y]	Rb mAb	Hu, Rat	ICC/IF, IHC, IHC-P, WB
	GTX72053	CD8 antibody [C8/144B]	Ms mAb	Hu	IHC-Fr, IHC-P
	GTX72447	CD8 antibody [B334 (H030-1.2)]	Ms mAb	Hu	FACS, ICC/IF, IHC-Fr
	GTX73594	CD8 antibody [144B] (ready-to-use)	Ms mAb	Hu	IHC-Fr, IHC-P
	Ⓢ GTX74773	CD8 antibody [LT8]	Ms mAb	Hu, Chmp, RMK, CIMK	Blocking, FACS, IHC-Fr, IP
	Ⓢ GTX74778	CD8 antibody [LT8] (Azide free)	Ms mAb	Hu, Chmp, RMK, CIMK	Blocking, FACS, IHC-Fr, IP
	GTX75282	CD8 antibody [2ST8.5H7]	Ms mAb	Hu, RMK, CIMK	FACS, IP, WB
	GTX75393	CD8 antibody [4B11]	Ms mAb	Hu	IHC, IHC-Fr, IHC-P, WB
	GTX76097	CD8 antibody [YTC141.1HL]	Rat mAb	Hu, CIMK	FACS
	Ⓢ GTX76220	CD8 antibody [MRC OX-8]	Ms mAb	Rat	FACS, IHC, IHC-Fr, IHC-P
	★ GTX76350	CD8 antibody [KT15]	Rat mAb	Ms	FACS, ICC/IF, IHC-Fr
	GTX76644	CD8 antibody [341]	Ms mAb	Rat	FACS, IP, WB
	GTX79429	CD8 antibody [SP16] (ready-to-use)	Rb mAb	Hu	IHC, IHC-P
	GTX83296	CD8 antibody [RAVB3]	Ms mAb	Hu	ELISA, FACS
	Helper T cell	GTX100824	CD4 antibody [N3C3]	Rb pAb	Hu
GTX111370		CD4 antibody [N1N3]	Rb pAb	Hu	WB
GTX10882		CD4 antibody [CA-4]	Ms mAb	Hu	IHC-F
★ GTX13435		CD4 antibody [Q4120]	Ms mAb	Hu	FACS
GTX13846		CD4 antibody [YTS177]	Rat mAb	Ms	
GTX13848		CD4 antibody [YTS191]	Rat mAb	Ms	FACS
GTX14386		CD4 antibody [OKT-4]	Ms mAb	Hu	
GTX19061		CD4 antibody [JXYT4]	Rat mAb	Ms	ELISA
GTX19835		CD4 antibody [RPA-T4]	Ms mAb	Hu	FACS, IHC-Fr
★ GTX21089		CD4 antibody [MEM-241]	Ms mAb	Hu	FACS, WB
GTX28361		CD4 antibody [LT4]	Ms mAb	Hu	IA
★ GTX43093		CD4 antibody [2-35] (PE)	Ms mAb	Chk, Trky	FACS
GTX44211		CD4 antibody [BL4]	Ms mAb	Hu	Blocking, FACS
GTX44212		CD4 antibody [13B8.2]	Ms mAb	Hu	Blocking, ELISA, FACS, IHC-Fr, WB
GTX44522		CD4 antibody [CA13.1E4]	Ms mAb	Dog	FACS, IHC-Fr, IP
GTX44524		CD4 antibody [CC8]	Ms mAb	Bov	FACS, ICC/IF, IHC-Fr, IP
GTX44526		CD4 antibody [CT7]	Ms mAb	Gpig	FACS
GTX44527		CD4 antibody [CVS4]	Ms mAb	Hrs	FACS, IP
GTX44528		CD4 antibody [Du CD4-2]	Ms mAb	Duck	FACS, IP
GTX44529		CD4 antibody [GK1.5]	Rat mAb	Ms	ELISA, FACS, ICC/IF, IHC-Fr, IP, WB
GTX44530		CD4 antibody [GK1.5] (Azide free)	Rat mAb	Ms	ELISA, FACS, ICC/IF, IHC-Fr, IP, WB, Functional Assay
GTX44533		CD4 antibody [KEN-4]	Ms mAb	Rb	FACS, IHC-Fr, IP

T cell markers

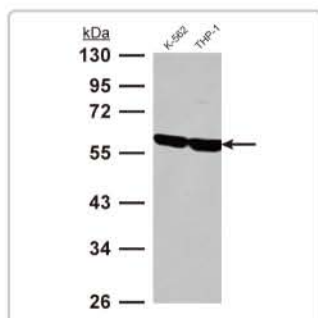
☉ Reference ★ Conjugated antibodies available for FACS

	Cat. No.	Product	Host & Clonality	Reactivity	Application	
Helper T cell	GTX44535	CD4 antibody [RM4-5]	Rat mAb	Ms	FACS, IHC-Fr	
	GTX44537	CD4 antibody [RPA-T4] (Azide free)	Ms mAb	Hu	FACS, IHC-Fr, Functional Assay	
	★ GTX44539	CD4 antibody [YTS177.9]	Rat mAb	Ms	FACS, Functional Assay	
	GTX44540	CD4 antibody [YTS191.1] (Azide free)	Rat mAb	Ms	FACS, IHC-Fr, Functional Assay	
	GTX50984	CD4 antibody	Rb pAb	Ms, Rat	FACS, IHC-P, WB	
	GTX52398	CD4 antibody [MAB0810]	Rat mAb	Ms	Blocking, Depletion, Stimulation	
	GTX52625	CD4 antibody [10A2]	Ms mAb	Hu	FACS, IHC	
	GTX62460	CD4 antibody [EPR3942]	Rb mAb	Hu	ICC/IF, WB	
	GTX62632	CD4 antibody [EPR3155(2)]	Rb mAb	Hu	ICC/IF, IP, WB	
	GTX63317	CD4 antibody [EP3154(2)]	Rb mAb	Hu	ICC/IF, WB	
	GTX63943	CD4 antibody [EPR6855]	Rb mAb	Hu	FACS, ICC/IF, IHC, IHC-P, WB	
	GTX64070	CD4 antibody [EPR7276]	Rb mAb	Hu	FACS, ICC/IF, WB	
	GTX75368	CD4 antibody [1F6]	Ms mAb	Hu	ICC/IF, IHC-P, WB	
	GTX73720	CD4 antibody [1F6] (ready-to-use)	Ms mAb	Hu	IHC-P	
	GTX74820	CD4 antibody [RPA-T4] (azide free)	Ms mAb	Hu	FACS, IHC-Fr	
	GTX74910	CD4 antibody [vpg39]	Ms mAb	Cat	FACS, IHC-Fr, IP	
	GTX74911	CD4 antibody [vpg38]	Ms mAb	Cat	FACS, IHC-Fr, IP	
	GTX75109	CD4 antibody [OX-35]	Ms mAb	Rat	FACS, ICC/IF, IHC-Fr	
	GTX75110	CD4 antibody [OX-35] (Azide free)	Ms mAb	Rat	FACS, ICC/IF, IHC-Fr	
	GTX75334	CD4 antibody [YTS191.1]	Rat mAb	Ms	FACS, ICC/IF, IHC-Fr	
	GTX75368	CD4 antibody [1F6]	Ms mAb	Hu	ICC/IF, IHC-P, WB	
	★ GTX75906	CD4 antibody [2-35]	Ms mAb	Chk, Trky	FACS, IHC-Fr, IP	
	☉ GTX76212	CD4 antibody [YNB46.1.8]	Rat mAb	Hu, Hm	EM, FACS, IHC-Fr	
	GTX76318	CD4 antibody [W3/25]	Ms mAb	Rat	FACS, IHC-Fr, IHC-P	
	GTX78249	CD4 antibody [MEM-115]	Ms mAb	Hu	FACS, IP	
	GTX78425	CD4 antibody [MEM-16]	Ms mAb	Hu	FACS, IP	
	GTX80144	CD4 antibody [GK1.5] (azide free)	Rat mAb	Ms	FACS, ICC/IF, IHC-Fr, IP, Functional Assay	
	GTX83297	CD4 antibody [B486A1]	Ms mAb	Hu	FACS	
	GTX84712	CD4 antibody [4F8]	Ms mAb	Hu	IHC, IHC-P, WB	
	GTX84713	CD4 antibody [9G7]	Ms mAb	Hu	ICC/IF, WB	
	GTX84714	CD4 antibody [18E3]	Ms mAb	Hu	FACS, WB	
	GTX84715	CD4 antibody [3B4]	Ms mAb	Hu	ICC/IF, WB	
	GTX84716	CD4 antibody [6E10]	Ms mAb	Hu	IHC, IHC-P, WB	
	GTX84717	CD4 antibody [9B7]	Ms mAb	Hu	WB	
	GTX84718	CD4 antibody [4A11]	Ms mAb	Hu	ICC/IF, WB	
	GTX84719	CD4 antibody [9C1]	Ms mAb	Hu, Dog, Mk, Rat	WB	
	GTX84720	CD4 antibody [10B5]	Ms mAb	Hu, Dog, Mk, Rat	IHC, IHC-P, WB	
	GTX85525	CD4 antibody [AP-MAB0707]	Rat mAb	Ms	FACS, IHC, IHC-P	
	Th1	GTX89379	TIM3 / HAVCR2 antibody, Internal	Gt pAb	Hu	ELISA, WB
		GTX53225	TIM-3 antibody [6F46]	Rat mAb	Ms	WB
GTX54117		TIM-3 antibody	Rb pAb	Hu, Ms	IHC, WB	
GTX59896		Tim-3 antibody	Rb pAb	Hu	WB	
Th2	GTX70387	CRTH2 antibody	Rb pAb	Hu	ELISA, WB	
	GTX85067	TIM-1 antibody	Rb pAb	Hu, Ms, Rat	ELISA, WB	
	GTX85068	TIM-1 antibody	Rb pAb	Hu, Ms	ELISA, ICC/IF, IHC, WB	
	GTX109654	GATA3 antibody [C2C3], C-term	Rb pAb	Hu	IHC-P, WB	
	GTX89886	GATA3 antibody, N-term	Gt pAb	Hu	ELISA, IHC, IHC-P, WB	
	GTX77882	GATA3 antibody	Rb pAb	Hu	IHC, IHC-P, WB	
Th17	GTX82830	GATA3 antibody [7B5]	Ms mAb	Hu	ELISA, IHC, IHC-P, WB	
	GTX83047	GATA3 antibody [1A10D1]	Ms mAb	Hu	ELISA, WB	
	★ GTX42368	CD161 antibody [B199.2]	Ms mAb	Hu	FACS, IHC-Fr, IP	
	★ GTX42369	CD161 antibody [10/78]	Ms mAb	Rat	FACS, IHC-Fr, IP	
	GTX75002	CD161 antibody [10/78] (Azide free)	Ms mAb	Rat	FACS, IHC-Fr, IP, RIA, WB, Functional Assay	
	☉ ★ GTX75449	CD161 antibody [B199.2]	Ms mAb	Hu	FACS, IHC-Fr, IP	
	GTX107737	FOXP3 antibody [C3], C-term	Rb pAb	Hu, Ms	IP, WB	
	GTX14551	FOXP3 antibody	Gt pAb	Hu, Ms, Dog, Mk, Rat	ELISA, WB	
	GTX30696	FOXP3 antibody	Rb pAb	Hu	ICC/IF, IHC-Fr, WB	
	GTX30697	FOXP3 antibody	Rb pAb	Hu, Ms	WB	
Regulatory T cell	GTX77889	FOXP3 antibody	Rb pAb	Hu	IHC, WB	
	★ GTX80283	FOXP3 antibody [3G3]	Ms mAb	Hu, Ms	FACS, WB	
	GTX82822	FOXP3 antibody [4C7]	Ms mAb	Hu	ELISA, WB	
	GTX89752	FOXP3 antibody, C-term	Gt pAb	Hu, Ms	ELISA, IHC-P	
	GTX89934	FOXP3 antibody, C-term	Gt pAb	Hu	ELISA, ICC/IF, IHC, IHC-P, WB, ChIP assay	

T cell markers

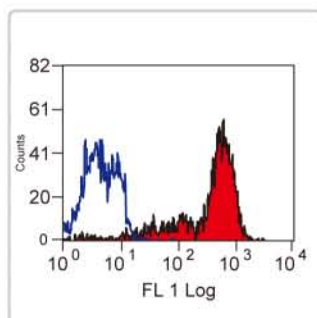
★ Conjugated antibodies available for FACS

	Cat. No.	Product	Host & Clonality	Reactivity	Application
Activated T cell	GTX13883	CD25 antibody [PC-61.5.3]	Rat mAb	Ms	FACS
	GTX13884	CD25 antibody [7D4]	Rat mAb	Ms	FACS
	GTX44232	CD25 antibody [B1.49.9]	Ms mAb	Hu	FACS, IHC-Fr
	GTX52405	CD25 antibody [MAB0817]	Rat mAb	Ms	Blocking, Inhib, Depletion
	GTX52430	CD25 antibody [MAB0845]	Rat mAb	Ms	Blocking, FACS, IHC-Fr, IP
	GTX53128	CD25 antibody [MAB0710]	Rat mAb	Ms	FACS, IHC
	GTX72199	CD25 antibody [B489 (143-13)]	Ms mAb	Hu	AF, FACS, IHC-Fr
	GTX74802	CD25 antibody [PC61.5.3.]	Rat mAb	Ms	FACS, IHC, IP
	★ GTX75869	CD25 antibody [MEM-181]	Ms mAb	Hu	FACS
	★ GTX76050	CD25 antibody [MRC OX-39]	Ms mAb	Rat	FACS, IHC-Fr, IHC-P
	★ GTX22577	CD38 antibody [HIT2]	Ms mAb	Hu	FACS, IHC-Fr, WB
	GTX37752	CD38 antibody	Rb pAb	Ms, Rat	ELISA, IHC-P, WB
	GTX52624	CD38 antibody [8D23]	Ms mAb	Hu	FACS, IHC
	GTX62471	CD38 antibody [EPR4106]	Rb mAb	Hu	FACS, ICC/IF, IHC, IHC-P, WB
	★ GTX74582	CD38 antibody [AT13/5]	Ms mAb	Hu	FACS, IHC-Fr
	★ GTX75086	CD38 antibody [90]	Rat mAb	Ms	FACS, IHC-Fr, IP
	GTX81962	CD38 antibody, C-term	Rb pAb	Hu	ELISA, FACS, ICC/IF, IHC, IHC-P, WB
	GTX83033	CD38 antibody [6E12D]	Ms mAb	Hu	ELISA, IHC, IHC-P, WB
	GTX37447	CD69 antibody	Rb pAb	Hu, Ms, Dog, Rat	ELISA, IHC-P, WB
	★ GTX75180	CD69 antibody [H1.2F3]	Hamster mAb	Ms	FACS, IHC-Fr, IP
	★ GTX80154	CD69 antibody [FN50]	Ms mAb	Hu	FACS, IHC-Fr, Functional Assay
	GTX83000	CD69 antibody [8B6]	Ms mAb	Hu	ELISA, FACS, IHC-P, WB
	GTX52421	CD134 / OX40 antibody [MAB0833]	Rat mAb	Ms	FACS, IHC-Fr, Stimulation
	GTX74997	CD134 antibody [OX86]	Rat mAb	Ms	FACS, IHC-Fr, Functional Assay
	GTX42395	CD150 antibody [9D1]	Rat mAb	Ms	FACS, Functional Assay
GTX42398	CD150 antibody [9D1] (Azide free)	Rat mAb	Ms	FACS, Functional Assay	
GTX44250	CD150 antibody [IPO-3]	Ms mAb	Hu	ELISA, FACS, IHC-Fr, IP	
★ GTX76016	CD150 antibody [A12]	Ms mAb	Hu, CIMK	FACS, IP, Functional Assay	



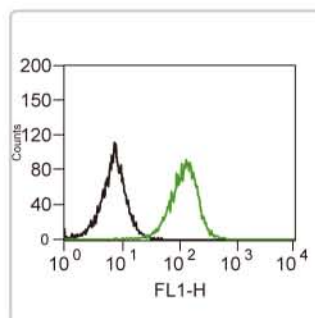
CD2 antibody [N1C1] (GTX101874)

WB analysis of CD2 protein in the indicated cell lines.



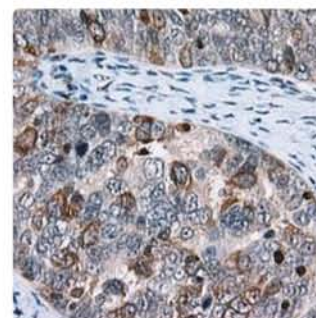
CD2 antibody [LT2] (GTX42303)

FACS analysis of human peripheral blood lymphocytes with CD2 antibody.



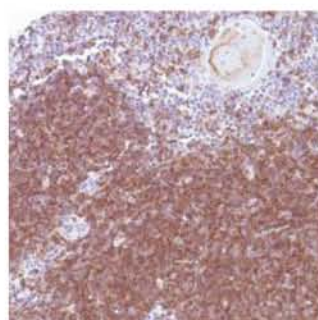
CD5 antibody [GT0012] (GTX628424)

FACS analysis of Jurkat cells with CD5 antibody.



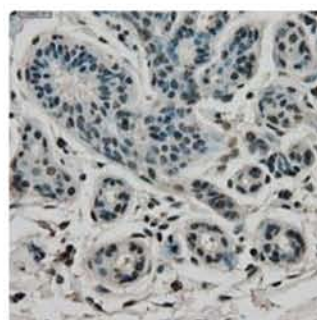
CD5 antibody [7A7] (GTX84709)

IHC-P analysis of CD5 expression in human ovary adenocarcinoma.



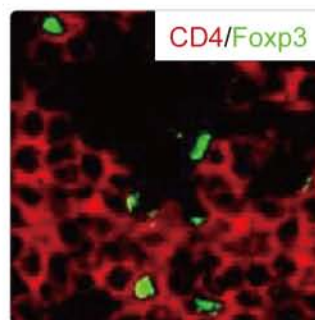
CD8 antibody [SP16] (GTX16696)

IHC-P analysis of CD8 expression in human thymus tissue.



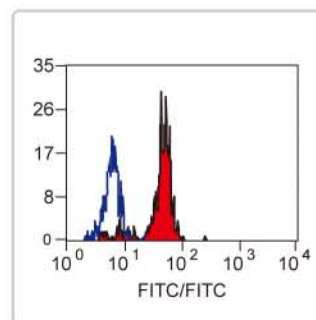
CD4 antibody [4F8] (GTX84712)

IHC-P analysis of CD4 expression in human breast tissue.



FOXP3 antibody (GTX30696)

ICC/IF analysis of FOXP3 expression in mouse thymus tissue.



CD150 antibody [A12] (FITC) (GTX76015)

FACS analysis of human peripheral blood monocytes with CD150 antibody.

Granzymes

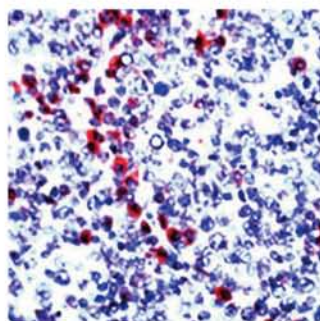
Reference ★ Conjugated antibodies available for FACS

Cat. No.	Product	Host & Clonality	Reactivity	Application
GTX10870	Granzyme A antibody [GA6]	Ms mAb	Hu	IHC-P, WB
GTX114461	Granzyme A antibody [N2C3]	Rb pAb	Hu	IHC-P, WB
GTX24059	Granzyme B antibody	Rb pAb	Hu, Ms, Rat	ICC/IF, IHC, IHC-Fr, IHC-P
GTX73108	Granzyme B antibody	Rb pAb	Hu, Rat	WB
GTX15313	Granzyme B antibody (ready-to-use)	Rb pAb	Hu, Ms, Rat	IHC-P
GTX53429	Granzyme B antibody [14G13]	Rat mAb	Ms	WB
★ GTX22389	Granzyme B antibody [B18.1]	Ms mAb	Hu, Rat	IP, WB
★ GTX80192	Granzyme B antibody [CLB-GB11]	Ms mAb	Hu, NHuPmm	FACS
★ GTX75842	Granzyme B antibody [GB10] (Biotin)	Ms mAb	Hu, Mk, Chmp, RMK	ELISA
⊙ GTX75843	Granzyme B antibody [GB11]	Ms mAb	Hu	ELISA, FACS, ICC/IF, IHC-Fr, IP
GTX11198	Granzyme B antibody [GB7]	Ms mAb	Hu	IHC-P, WB
GTX75841	Granzyme B antibody [GB7]	Ms mAb	Hu	IHC-P
GTX73926	Granzyme B antibody [GZB01]	Ms mAb	Ms	IHC-P
GTX81830	Granzyme B antibody, C-term	Rb pAb	Hu	ELISA, IHC, IHC-P, WB
GTX81831	Granzyme B antibody, N-term	Rb pAb	Hu, Ms	ELISA, FACS, IHC, IHC-P, WB
GTX53337	Granzyme D antibody [8G14]	Rat mAb	Ms	WB
GTX53338	Granzyme G antibody [12F21]	Rat mAb	Ms	WB
GTX52772	Granzyme H antibody [10A39]	Ms mAb	Hu	WB
GTX114460	Granzyme H antibody [N2C3]	Rb pAb	Hu	WB
GTX81716	GZMM antibody, Internal	Rb pAb	Hu	ELISA, FACS, IHC, IHC-P, WB

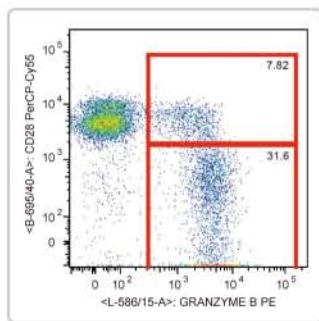
Perforin

★ Conjugated antibodies available for FACS

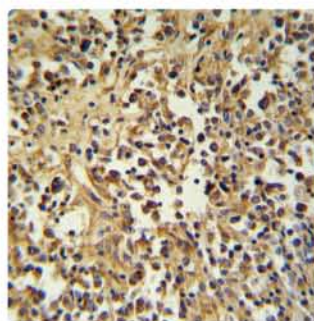
Cat. No.	Product	Host & Clonality	Reactivity	Application
GTX102379	Perforin 1 antibody [N1N3]	Rb pAb	Hu	WB
GTX27203	Perforin antibody	Rb pAb	Ms, Rat	WB
GTX59812	Perforin antibody	Rb pAb	Hu, Ms, Rat	ICC/IF, IHC, IP, WB
★ GTX16074	Perforin antibody [CB5.4]	Rat mAb	Ms	ICC/IF, IHC-Fr, IHC-P, IP, WB
GTX16079	Perforin antibody [CE2.10]	Ms mAb	Hu, Ms	IP, WB
GTX59602	Perforin antibody [delta G9]	Ms mAb	Hu	FACS, ICC/IF, IHC, IP



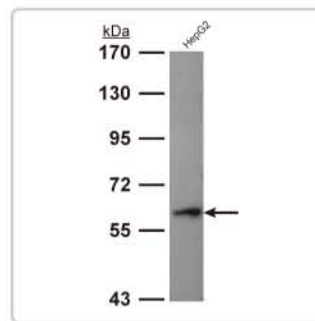
Granzyme B antibody (GTX24059)
IHC-P analysis of Granzyme B expression in human tonsil tissue.



Granzyme B antibody [CLB-GB11] (GTX80192)
FACS analysis of human CD8+ peripheral blood cells with Granzyme B antibody.

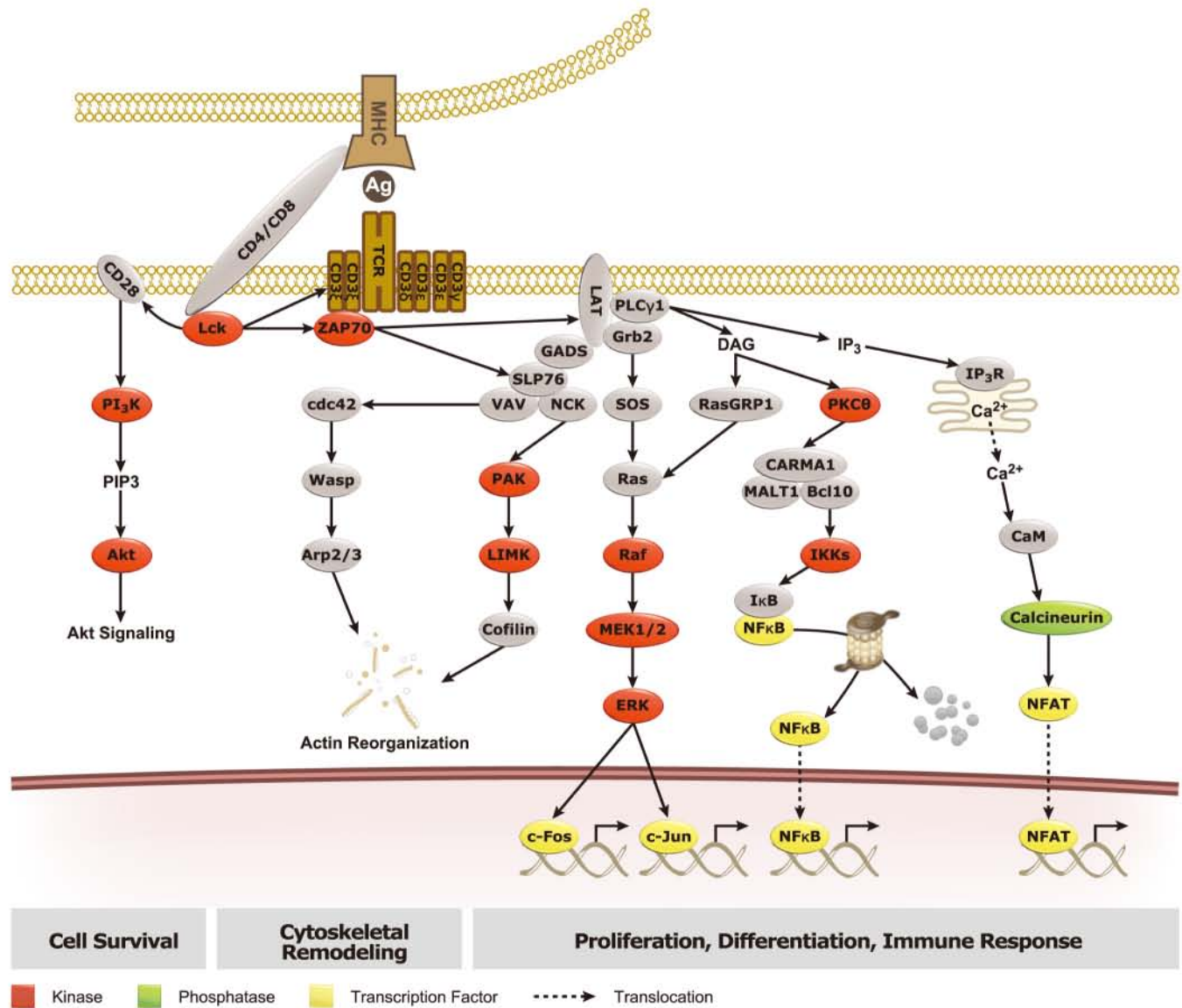


GZMM antibody, Internal (GTX81716)
IHC-P analysis of granzyme M expression in human lymph tissue.



Perforin 1 antibody [N1N3] (GTX102379)
WB analysis of Perforin 1 expression in HepG2 cells.

T Cell Receptor Signaling



TCR complex

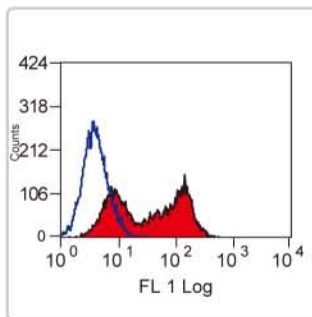
☉ Reference ★ Conjugated antibodies available for FACS

Cat. No.	Product	Host & Clonality	Reactivity	Application
GTX38965	TCR alpha + beta (Vb1) antibody [TCR-2]	Ms mAb	Chk	FACS, IHC-Fr, IP
GTX38964	TCR alpha + beta (Vb2) antibody [TCR-3]	Ms mAb	Chk	FACS, IHC-Fr
★ GTX74978	TCR alpha + beta antibody [H57-597]	Hm mAb	Ms	FACS, IHC-Fr, WB
★ GTX29314	TCR alpha + beta antibody [R73]	Ms mAb	Mk, Rat, CIMK	FACS, IHC-Fr, IP, Functional Assay
★ GTX76146	TCR alpha + beta antibody [R73]	Ms mAb	Rat	FACS, IHC-Fr, IP
★ GTX76148	TCR alpha + beta antibody [R73]	Ms mAb	Rat	FACS, IHC-Fr, IP
GTX80081	TCR alpha/beta antibody [IP26]	Ms mAb	Hu	FACS
GTX59656	TCR alpha antibody	Rb pAb	Hu, Ms, Rat	IHC, IP, WB
GTX76658	TCR alpha antibody [3A8]	Ms mAb	Hu	IHC-Fr, IP
GTX59657	TCR beta antibody	Rb pAb	Hu, Ms, Rat	IHC, IP, WB
GTX52448	TCR beta antibody [MAB0872]	Rat mAb	Ms	Blocking, FACS
GTX79388	TCR Beta F1 antibody [8A3]	Ms mAb	Hu, Ms, Yeast, NHuPm	FACS, ICC/IF, IHC, IHC-P, IP, WB
GTX15595	TCR C gamma M1 antibody [gamma 3.20]	Ms mAb	Hu	ELISA, FACS, IHC, IHC-Fr, IP
GTX52443	TCR delta antibody [MAB0864]	Hm mAb	Ms	FACS, Depletion, Activation
GTX15592	TCR delta TCS1 antibody [TS-1]	Ms mAb	Hu	Blocking, FACS, ICC/IF, IHC, IHC-Fr, IP, Activation
GTX15594	TCR gamma + delta antibody [5A6.E9]	Ms mAb	Hu	Blocking, ELISA, FACS, IHC, IHC-Fr, IP, Activation
★ GTX11120	TCR gamma + delta antibody [GL3]	Hm mAb	Ms	FACS, IHC-Fr
★ GTX38963	TCR gamma + delta antibody [TCR-1]	Ms mAb	Chk	FACS, IHC-Fr, IP
★ GTX74692	TCR gamma + delta antibody [V65]	Ms mAb	Rat	FACS, IHC-Fr, IP
GTX14095	TCR idiotype antibody [1B2]	Ms mAb	Ms	
GTX79230	TCR V alpha 12.1 antibody [6D6.6]	Ms mAb	Hu, Ms, Rat	Blocking, FACS, IHC, IHC-Fr, IP, WB, Activation
★ GTX79219	TCR V alpha 12.1 antibody [6D6.6] (FITC)	Ms mAb	Hu	FACS, IHC-Fr, IP, Activation
GTX79234	TCR V alpha 2 antibody [F1]	Ms mAb	Hu, NHuPm	Blocking, FACS, ICC/IF, IHC, IHC-Fr, IP, WB
★ GTX79225	TCR V alpha 2 antibody [F1] (FITC)	Ms mAb	Hu, NHuPm	Blocking, FACS, IHC, WB
GTX76643	TCR V beta 10 antibody [G101]	Ms mAb	Rat	FACS
GTX11495	TCR V beta 10b antibody [KT10b]	Rat mAb	Ms	FACS, IHC-Fr
GTX11504	TCR V beta 12 antibody [KT12]	Rat mAb	Ms	FACS, IHC-Fr
GTX79235	TCR V beta 12 antibody [S511]	Ms mAb	Hu, Ms	Blocking, ELISA, FACS, ICC/IF, IHC, IHC-Fr, IP, Activation
★ GTX79226	TCR V beta 12 antibody [S511] (FITC)	Ms mAb	Hu	FACS, IHC-Fr, IP, Activation
GTX76195	TCR V beta 16.1 antibody [HIS 42 (86.1 IE4)]	Ms mAb	Rat	FACS, IHC-Fr, IP
★ GTX76230	TCR V beta 2 antibody [KT11] (Biotin)	Rat mAb	Ms	FACS
★ GTX79221	TCR V beta 3.1 antibody [8F10] (FITC)	Ms mAb	Hu, NHuPm	Blocking, ELISA, FACS, ICC/IF, IHC, IP
GTX38960	TCR V beta 4 antibody [KT4]	Rat mAb	Ms	FACS
GTX38961	TCR V beta 4 antibody [KT4]	Rat mAb	Ms	FACS
GTX21898	TCR V beta 5 antibody [MEM-262]	Ms mAb	Hu	FACS, IP, WB
GTX79237	TCR V beta 5a antibody [1C1]	Ms mAb	Hu, Ms, NHuPm	Blocking, FACS, ICC/IF, IHC, IHC-Fr, Activation
★ GTX79228	TCR V beta 5b antibody [W112] (FITC)	Ms mAb	Hu	FACS, IHC, IHC-Fr, IP, WB, Activation
GTX76642	TCR V beta 8.5 antibody [B73]	Ms mAb	Rat	FACS
GTX79236	TCR V beta 8a antibody [I6G8]	Ms mAb	Hu, Ms, NHuPm	Blocking, FACS, ICC/IF, IHC, IHC-Fr, IP, WB, Activation
★ GTX79220	TCR V beta 8b antibody [MX-6] (FITC)	Ms mAb	Hu	FACS, ICC/IF, IHC, IHC-Fr, IP, Activation
GTX79232	TCR V delta 1 antibody [TS8.2]	Ms mAb	Hu, Ms, NHuPm	Blocking, ELISA, FACS, ICC/IF, IHC, IHC-Fr, Activation
GTX79231	TCR V delta 2 antibody [15D]	Ms mAb	Hu, Dm, NHuPm, RMK	Blocking, FACS, IHC-Fr, IP, WB, Activation
GTX14214	TCR V gamma 2 antibody [UC3-10A6]	Hm mAb	Ms	
GTX79233	TCR V gamma 9 antibody [7A5]	Ms mAb	Hu, Dm, NHuPm	Blocking, ELISA, FACS, ICC/IF, IHC-Fr, IP, Neut, WB, Activation
GTX14669	TCR V gamma1.1/Cr4 antibody [2.11]	Hm mAb	Ms	
GTX20828	CD3 antibody	Rb pAb	Hu	IHC, IHC-Fr, IHC-P
GTX16930	CD3 antibody (ready-to-use)	Rb pAb	Hu	IHC-P
☉ ★ GTX76496	CD3 antibody [1F4]	Ms mAb	Hu, Rat	FACS, IHC-Fr, IHC-P, IP, WB
GTX44229	CD3 antibody [289-13801(UCH-T1(T28))]	Ms mAb	Hu	
GTX53118	CD3 antibody [3B19]	Rat mAb	Ms	FACS, IHC, IHC-P, IP
GTX83391	CD3 antibody [4D10A6]	Ms mAb	Hu	ELISA, FACS
★ GTX42110	CD3 antibody [CD3-12]	Rat mAb	Hu, Ms, Chk, Dog, Pig, Cat, Duck, Hrs, Owl, Xi, Bov, RMK, CIMK, frg, Raccoon	ELISA, FACS, ICC/IF, IHC-Fr, IHC-P, WB
☉ GTX42109	CD3 antibody [CT-3]	Ms mAb	Chk	FACS, IHC-Fr, IP
GTX17143	CD3 antibody [F7.2.38]	Ms mAb	Hu	ICC/IF, IHC-P
★ GTX628462	CD3 antibody [GT0013]	Ms mAb	Hu, Ms	FACS, ICC/IF
GTX42105	CD3 antibody [KT3]	Rat mAb	Ms	FACS, IHC, IHC-Fr
GTX42108	CD3 antibody [KT3] (Azide free)	Rat mAb	Ms	FACS, IHC-Fr
GTX28362	CD3 antibody [LT3]	Ms mAb	Hu	IA
★ GTX52396	CD3 antibody [MAB0808]	Rat mAb	Ms	Depletion, Activation
GTX28090	CD3 antibody [MEM-57]	Ms mAb	Hu	FACS, IP
GTX11282	CD3 antibody [MEM-92]	Ms mAb	Hu	FACS, IP
GTX79906	CD3 antibody [OKT3]	Ms mAb	Hu	FACS, ICC/IF, IHC-Fr
GTX79905	CD3 antibody [OKT3] (Azide free)	Ms mAb	Hu	FACS, IHC-Fr, Functional Assay
GTX20699	CD3 antibody [PS1]	Ms mAb	Hu	IHC-Fr, IHC-P

TCR complex

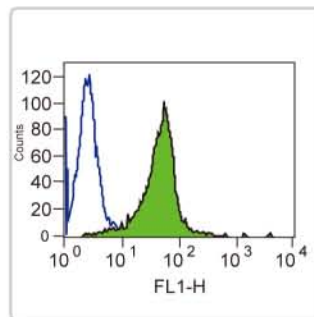
Reference ★ Conjugated antibodies available for FACS

Cat. No.	Product	Host & Clonality	Reactivity	Application
GTX73504	CD3 antibody [PS1] (ready-to-use)	Ms mAb	Hu	IHC-Fr, IHC-P
★ GTX16669	CD3 antibody [SP7]	Rb mAb	Hu, Ms, Dog, Mk, Pig, Bb, Cat, Hrs, Rb, Shp, Wdc	FACS, IHC, IHC-P, WB
★ GTX20022	CD3 antibody [UCHT1]	Ms mAb	Hu, Mk, Pig, Chmp	FACS, ICC/IF, IHC, IHC-Fr, IP, RIA
GTX42102	CD3 antibody [UCHT1] (Azide free)	Ms mAb	Hu, Chmp	FACS, IHC-Fr
GTX80236	CD3 (activation epitope) antibody [APA1/1]	Ms mAb	Hu, Ms	FACS, ICC/IF, IHC-Fr, IP, WB
GTX105811	CD3 delta antibody	Rb pAb	Hu	WB
★ GTX25690	CD3 epsilon antibody	Rb pAb	Hu, Ms, Rat	ELISA, IHC, IHC-P, WB
GTX50796	CD3 epsilon antibody	Rb pAb	Hu, Ms, Rat	WB
GTX53910	CD3 epsilon antibody	Rb pAb	Hu, Ms, Rat	ICC/IF, IHC, WB
GTX73871	CD3 epsilon antibody	Rb pAb	Hu	IHC-P
★ GTX16181	CD3 epsilon antibody [145-2C11]	Hm mAb	Ms	FACS
GTX52620	CD3 epsilon antibody [3F43]	Ms mAb	Hu	FACS, IHC, Activation
GTX83278	CD3 epsilon antibody [4E2]	Ms mAb	Hu	ELISA, FACS, WB
★ GTX44226	CD3 epsilon antibody [500-A2]	Hm mAb	Ms	FACS, ICC/IF, IHC-Fr
GTX108478	CD3 epsilon antibody [C2C3], C-term	Rb pAb	Hu	WB
GTX42112	CD3 epsilon antibody [CA17.2A12]	Ms mAb	Dog	FACS, ICC/IF, IHC-Fr, IHC-P, IP
GTX10869	CD3 epsilon antibody [CA-3]	Ms mAb	Hu	IHC-F
GTX61145	CD3 epsilon antibody [E272]	Rb mAb	Hu	ICC/IF, IHC-P, IP
GTX61146	CD3 epsilon antibody [E292]	Rb mAb	Hu	ICC/IF, WB
GTX61392	CD3 epsilon antibody [EP449E]	Rb mAb	Hu	FACS, IHC, IHC-P, IP, WB
GTX52397	CD3 epsilon antibody [MAB0809]	Hm mAb	Ms	Depletion, Activation
GTX111878	CD3 gamma antibody [C1C3]	Rb pAb	Hu	IHC-P, WB
GTX62681	CD3 gamma antibody [EPR4516]	Rb mAb	Hu	ICC/IF, IHC-P, WB
GTX62682	CD3 gamma antibody [EPR4517]	Rb mAb	Hu, Ms	ICC/IF, IHC-P, IP, WB
GTX61864	CD3 zeta (phospho Tyr142) antibody [EP265(2)Y]	Rb mAb	Hu	ICC/IF, IP, WB
GTX61901	CD3 zeta (phospho Tyr83) antibody [EP776(2)Y]	Rb mAb	Hu	ICC/IF, IP, WB
GTX17061	CD3 zeta antibody	Rb pAb	Hu, Ms, Pig, Rat, Shp	IHC-P
GTX53919	CD3 zeta antibody	Rb pAb	Hu, Ms, Rat	ICC/IF, IHC, WB
GTX83004	CD3 zeta antibody [4B10]	Ms mAb	Hu	ELISA, FACS, ICC/IF, IHC-P, WB
GTX108479	CD3 zeta antibody [C1C3]	Rb pAb	Hu	WB
GTX61340	CD3 zeta antibody [EP286Y]	Rb mAb	Hu	FACS, ICC/IF, WB
★ GTX11281	CD3 zeta antibody [G3]	Ms mAb	Hu, Ms	ELISA, FACS, IP, WB
★ GTX80138	CD3 zeta antibody [H146-968]	Hm mAb	Hu, Ms	FACS, ICC/IF, IP, WB



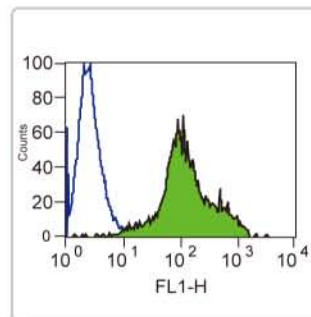
TCR alpha + beta antibody [H57-597] (GTX74978)

FACS analysis of mouse spleen cells with TCR alpha +beta antibody.



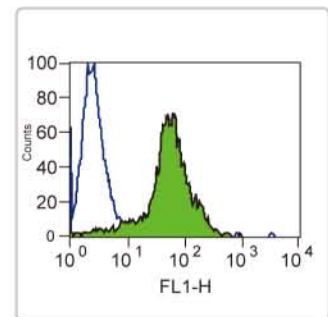
TCR V alpha 2 antibody [F1] (FITC) (GTX79225)

FACS analysis of Jurkat cells with TCR V alpha 2 antibody.



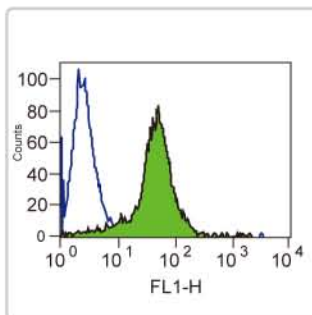
TCR Beta F1 antibody [8A3] (GTX79388)

FACS analysis of Jurkat cells with TCR Beta F1 antibody.



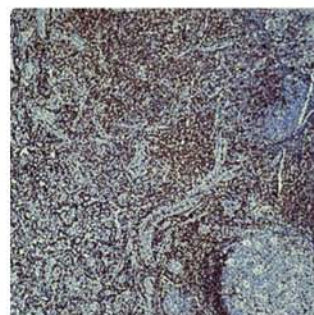
TCR C gamma M1 antibody [gamma 3.20] (GTX15595)

FACS analysis of Jurkat cells with TCR C gamma M1 antibody.



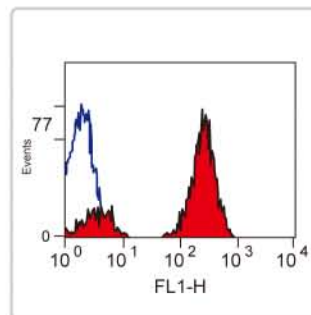
TCR delta TCS1 antibody [TS-1] (GTX15592)

FACS analysis of Jurkat cells with TCR delta TCS1 antibody.



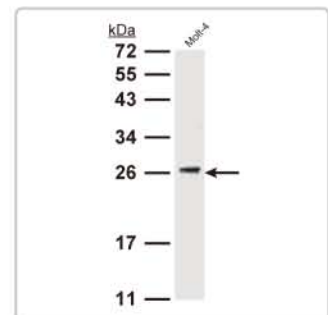
CD3 antibody [SP7] (GTX16669)

IHC-P analysis of CD3 expression in human tonsil tissue.



CD3 antibody [UCHT1] (GTX20022)

FACS analysis of human peripheral blood lymphocytes with CD3 antibody.



CD3 gamma antibody [C1C3] (GTX111878)

WB analysis of CD3 protein in Molt-4 cells.

Downstream kinases of TCR signaling

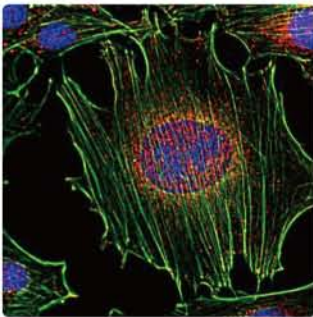
⊕ Reference ★ Conjugated antibodies available for FACS

Cat. No.	Product	Host & Clonality	Reactivity	Application
GTX101189	FYN antibody [N1N3]	Rb pAb	Hu	ICC/IF, WB
GTX109428	FYN antibody [N1C2]	Rb pAb	Hu	IHC-P, WB
GTX21881	FYN antibody [FYN-01]	Ms mAb	Hu, Ms	ICC/IF, IP, WB
GTX23116	FYN antibody [1S]	Ms mAb	Hu, Ms, Rat	IHC-P
GTX60460	FYN antibody [2A10]	Ms mAb	Hu	ELISA, FACS, ICC/IF, IHC, WB
GTX60461	FYN antibody [2H8]	Ms mAb	Hu, Ms	ELISA, WB
GTX63283	Fyn antibody [EPR5500]	Rb mAb	Hu, Ms, Rat	ICC/IF, WB
GTX89744	FYN antibody, N-term	Gt pAb	Hu, Ms	ELISA, WB
GTX61838	Hck antibody [EP2415Y], C-term	Rb mAb	Hu	FACS, ICC/IF, IP, WB
GTX83203	HCK antibody [3D12E10]	Ms mAb	Hu	ELISA, IHC, IHC-P, WB
GTX104772	ITK antibody [C3], C-term	Rb pAb	Hu	ICC/IF, WB
GTX113215	ITK antibody [N3C3]	Rb pAb	Hu	WB
GTX113217	ITK antibody [N2C1], Internal	Rb pAb	Hu	WB
GTX89987	ITK antibody, C-term	Gt pAb	Hu	ELISA, WB
GTX29707	ITK antibody	Gt pAb	Hu, Ms	WB
GTX16451	ITK antibody [2F12]	Ms mAb	Hu, Ms	IP, WB
GTX60475	ITK antibody [5G6]	Ms mAb	Hu	ELISA, FACS, ICC/IF, WB
GTX83023	ITK antibody [5G12C4]	Ms mAb	Hu	ELISA, WB
GTX13953	Lck antibody	Rb pAb	Hu, Ms	WB
GTX73113	Lck antibody	Rb pAb	Hu	IP, WB
GTX13699	Lck antibody [33D196]	Ms mAb	Hu, Ms	WB
GTX83157	Lck antibody [8E5F9, 4B2C7]	Ms mAb	Hu	ELISA, WB
GTX101275	Lck antibody [C1C3]	Rb pAb	Hu, Ms	WB
GTX28075	Lck antibody [LCK-01]	Ms mAb	Hu	FACS, ICC/IF, IP, WB
GTX78371	Lck antibody [LIME-06]	Ms mAb	Hu	IP, WB
GTX107432	Lck antibody [N1C1]	Rb pAb	Hu	IHC-P, WB
GTX107785	Lck antibody [N3C3]	Rb pAb	Hu	WB
GTX24896	Lck antibody antibody	Rb pAb	Hu, Ms	WB
GTX61158	LCK/p56 antibody [Y123]	Rb mAb	Hu	FACS, ICC/IF, IHC-P, IP, WB
GTX24898	Lck (phospho Ser158) antibody	Rb pAb	Hu, Ms	WB
GTX24900	Lck (phospho Tyr192) antibody	Rb pAb	Hu, Ms	WB
GTX79024	Lck (phospho Tyr393) antibody	Rb pAb	Hu, Ms, Rat	WB
GTX38561	Lck (phospho Tyr394) antibody	Rb pAb	Hu, Ms	WB
GTX50202	Lck (phospho Tyr394) antibody	Rb pAb	Hu, Ms	WB
GTX24901	Lck (phospho Tyr505) antibody	Rb pAb	Hu, Ms	WB
GTX50349	Lck (phospho Tyr505) antibody	Rb pAb	Hu, Ms	WB
GTX59577	Lck (phospho Tyr505) antibody	Rb pAb	Hu	IHC, IP
GTX61801	LCK (phospho Tyr505) antibody [EP2158Y]	Rb mAb	Hu, Ms	WB
GTX112014	Tec antibody [N3C3]	Rb pAb	Hu	WB
GTX118997	TEC antibody [N2C2], Internal	Rb pAb	Hu	WB
GTX30915	Tec antibody [6k392]	Rb mAb	Hu, Ms, Rat	FACS, ICC/IF, IHC-P, IP, WB
GTX61250	TEC antibody [Y398]	Rb mAb	Hu, Ms, Rat	FACS, ICC/IF, IHC-P, IP, WB
GTX83318	TEC antibody [3A5]	Ms mAb	Hu	ELISA, WB
GTX101076	ZAP70 antibody	Rb pAb	Hu, Ms	IHC-P, WB
GTX107641	ZAP70 antibody	Rb pAb	Hu	IHC-P, WB
GTX107950	ZAP70 antibody	Rb pAb	Hu	IHC-P, IP, WB
GTX50507	ZAP70 antibody	Rb pAb	Hu, Ms	IHC, IHC-P, WB
GTX50508	ZAP70 antibody	Rb pAb	Hu, Ms, Rat	IHC, IHC-P, WB
⊕ GTX18371	ZAP70 antibody [1E7.2]	Ms mAb	Hu, Ms	ELISA, FACS, ICC/IF, IP, WB
GTX83218	ZAP70 antibody [3D2A4]	Ms mAb	Hu	ELISA, IHC, IHC-P, WB
⊕ GTX61094	ZAP70 antibody [E267], N-term	Rb mAb	Hu, Ms, Rat	FACS, IP, WB
GTX62406	ZAP70 antibody [ER227(2)]	Rb mAb	Hu	ICC/IF, IHC-P, IP, WB
★ GTX38766	ZAP70 antibody [SBZAP]	Ms mAb	Hu	ELISA
GTX61136	ZAP70 antibody [YE291]	Rb mAb	Hu	FACS, ICC/IF, IHC, IHC-P, IP, WB
GTX38764	ZAP70 antibody [ZAP-03]	Ms mAb	Hu	FACS, WB
GTX12868	ZAP70 (phospho Tyr292) antibody	Rb pAb	Hu, Ms	WB
GTX62106	ZAP70 (phospho Tyr292) antibody [EPR1073]	Rb mAb	Hu	FACS, ICC/IF, WB
GTX12869	ZAP70 (phospho Tyr315/Tyr319) antibody	Rb pAb	Hu, Ms	WB
GTX38562	ZAP70 (phospho Tyr319) antibody	Rb pAb	Hu, Ms, Rat	ICC/IF, WB
GTX50214	ZAP70 (phospho Tyr319) antibody	Rb pAb	Hu, Ms, Rat	ICC/IF, IHC, WB
GTX61799	ZAP70 (phospho Tyr492) antibody [EP2291Y]	Rb mAb	Hu	IP, WB
GTX50215	ZAP70 (phospho Tyr493) antibody	Rb pAb	Hu, Ms, Rat	IHC, IHC-P, WB
GTX78921	ZAP70 (phospho Tyr493) antibody	Rb pAb	Hu, Ms, Rat	IHC

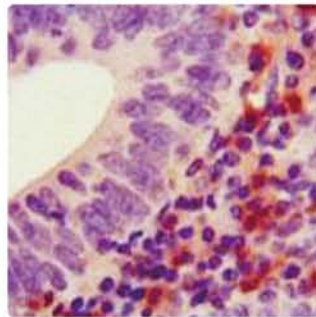
Adaptor molecules of TCR signaling

Reference

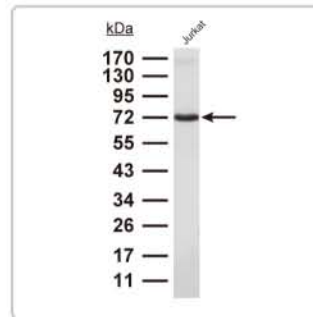
Cat. No.	Product	Host & Clonality	Reactivity	Application
GTX22507	LAT antibody	Rb pAb	Hu, Ms	ELISA, IHC, WB
GTX22852	LAT antibody [LAT-01]	Ms mAb	Hu	FACS, IP, WB
GTX61143	LAT antibody [Y109]	Rb mAb	Hu	FACS, IHC-P, IP, WB
GTX80076	LAT antibody [LAT-1D1]	Ms mAb	Ms, Rat	EM, ICC/IF, IP, WB
GTX24476	LAT (phospho Tyr132) antibody	Rb pAb	Hu, Ms, Rat	WB
GTX61080	LAT (phospho Tyr191) antibody [E225]	Rb mAb	Hu, Ms, Rat	ICC/IF, IHC-P, IP, WB
GTX61858	LAT (phospho Tyr200) antibody [EP983(2)Y]	Rb mAb	Hu	ICC/IF, WB
GTX115233	GRAP2 antibody	Rb pAb	Hu	IHC-P, WB
GTX22520	GRAP2 antibody	Gt pAb	Hu, Ms	WB
GTX89923	GRAP2 / GRID / Grf40 antibody, C-term	Gt pAb	Hu	ELISA, WB
GTX79854	GRAP2/GADS antibody [UW40]	Ms mAb	Hu	FACS, IP, WB
GTX14942	SLP76 antibody	Rb pAb	Hu	IHC-P, WB
GTX62852	SLP-76 antibody [EPR2549(2)], C-term	Rb mAb	Hu, Ms, Rat	ICC/IF, IHC-P, WB
GTX14940	SLP76 antibody [SLP-76/03]	Ms mAb	Hu, Ms, Pig	WB
GTX61963	SLP-76 (phospho Tyr113) antibody [EPR2851]	Rb mAb	Hu, Rb	FACS, WB
GTX61995	SLP76 (phospho Tyr145) antibody [EP2853Y]	Rb mAb	Hu	FACS, ICC/IF, WB



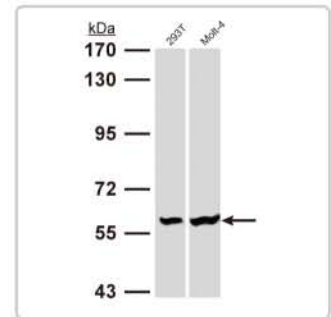
FYN antibody [FYN-01] (GTX21881)
ICC/IF analysis of FYN expression (red) in murine transformed fibroblasts.



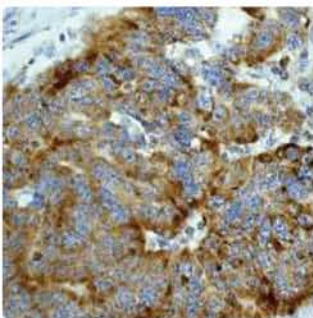
HCK antibody [3D12E10] (GTX83203)
IHC-P analysis of HCK expression in human colon cancer.



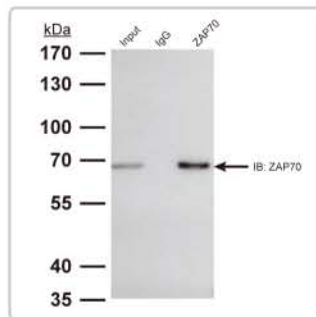
ITK antibody [5G6] (GTX60475)
WB analysis of ITK protein in Jurkat cells.



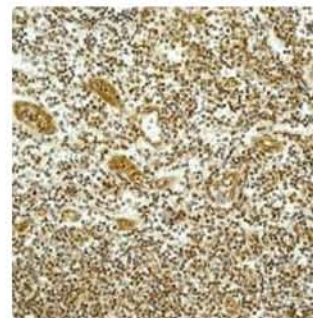
Lck antibody [N3C3] (GTX107785)
WB analysis of Lck protein in the indicated cell lines.



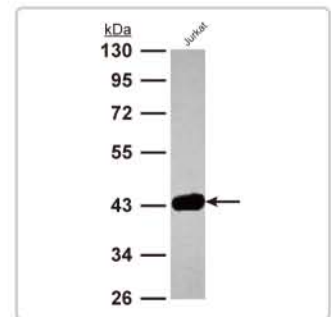
TEC antibody [Y398] (GTX61250)
IHC-P analysis of TEC expression in human ovary carcinoma.



ZAP70 antibody (GTX107950)
IP analysis of ZAP70 protein in Jurkat cells.



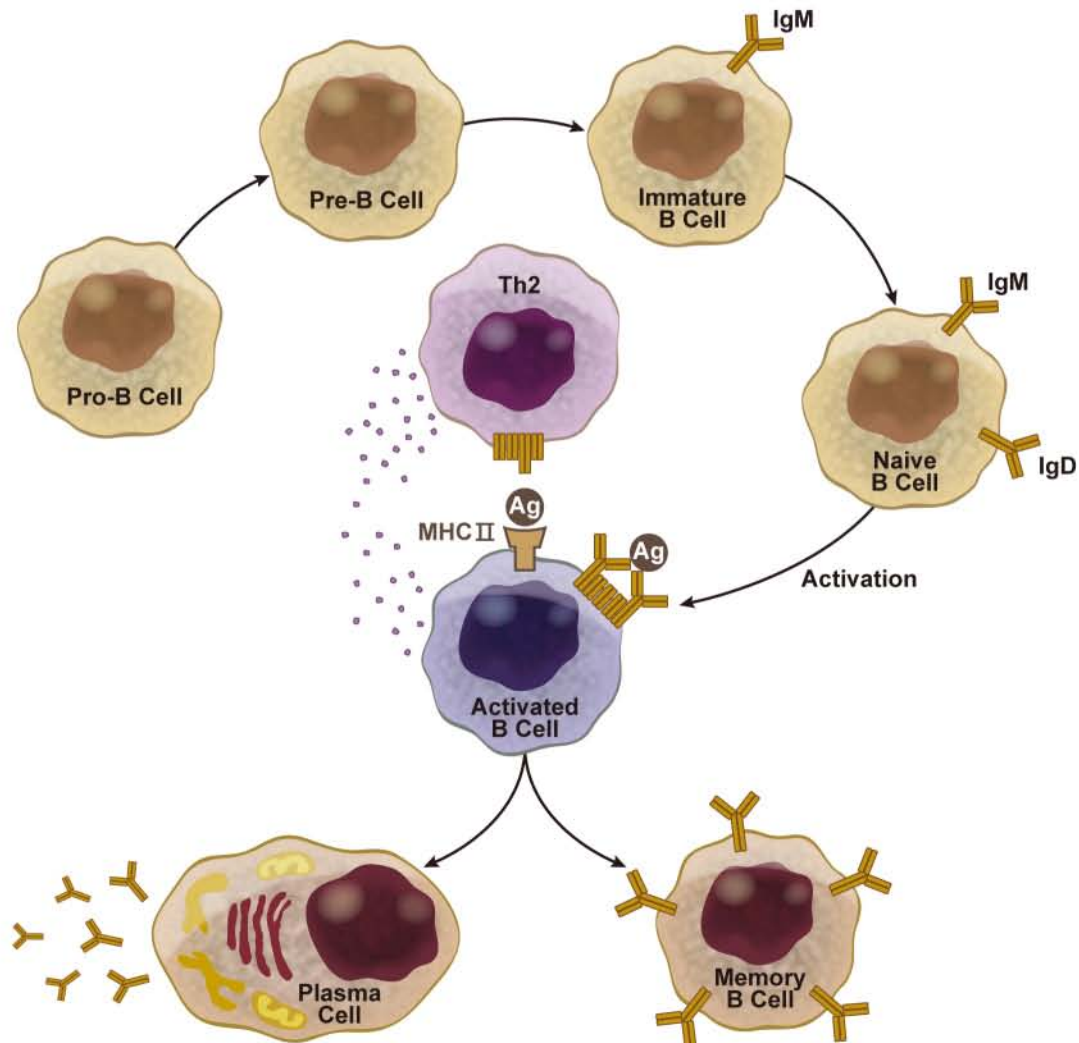
LAT (phospho Tyr191) antibody [E225] (GTX61080)
IHC-P analysis of LAT (pTyr191) expression in human tonsils tissue.



GRAP2 antibody (GTX115233)
WB analysis of GRAP2 protein in Jurkat cells.


B Cells

B cells are lymphocytes that play a major role in humoral immunity. Their major function is to produce and secrete antibodies that specifically recognize and neutralize the corresponding antigens. B cells develop in the bone marrow and mature in the spleen. Activation of B cells is triggered by the binding of a free antigen to the B cell receptor (BCR) or by cytokines produced from helper T cells, exerting the downstream signaling that leads to cell proliferation, differentiation and antibody generation.



B cell markers

 Reference
  Conjugated antibodies available for FACS

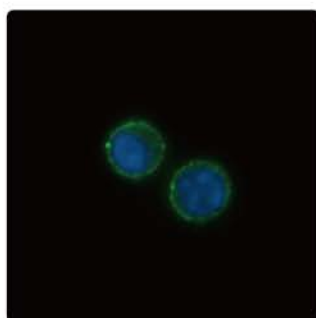
	Cat. No.	Product	Host & Clonality	Reactivity	Application
Pan B cell	GTX101512	CD19 antibody [C1C3]	Rb pAb	Hu	ICC/IF, WB
	GTX53921	CD19 antibody	Rb pAb	Hu, Rat	IHC, IHC-P, WB
	GTX82472	CD19 antibody	Chk pAb	Hu	WB
	GTX14102	CD19 antibody [1D3]	Rat mAb	Ms	FACS, IHC, IP
	GTX83282	CD19 antibody [2E2]	Ms mAb	Hu	ELISA, FACS, ICC/IF
	GTX83387	CD19 antibody [2E2B6B10]	Ms mAb	Hu	ELISA, IHC, IHC-P, WB
	GTX80276	CD19 antibody [4G7]	Ms mAb	Hu	FACS, ICC/IF
	GTX84726	CD19 antibody [5F3]	Ms mAb	Hu	WB
	★ GTX75012	CD19 antibody [6D5]	Rat mAb	Ms	FACS, IHC-Fr, IP
	GTX19650	CD19 antibody [BC-3]	Ms mAb	Hu	FACS, ICC/IF, IHC-Fr
	★ GTX42326	CD19 antibody [Bu12]	Ms mAb	Hu	FACS, IP
	GTX63461	CD19 antibody [EPR5906]	Rb mAb	Hu	ICC/IF, IHC-P, IP, WB
	GTX72026	CD19 antibody [HD37]	Ms mAb	Hu	FACS, IHC-Fr
	GTX42325	CD19 antibody [LE-CD19]	Ms mAb	Hu	ELISA, FACS, IHC-P, IP, WB
	★ GTX42323	CD19 antibody [LT19]	Ms mAb	Hu	FACS, IHC-Fr, IP
	GTX100209	CD20 antibody [C2C3], C-term	Rb pAb	Hu	ICC/IF, WB
	GTX21310	CD20 antibody, C-term	Gt pAb	Hu	ELISA, WB
	 ★ GTX75271	CD20 antibody [2H7]	Ms mAb	Hu, Mk	FACS, IHC-Fr
	GTX83206	CD20 antibody [3E9D3C1G3]	Ms mAb	Hu	ELISA, ICC/IF, IHC-P
	GTX75377	CD20 antibody [7D1]	Ms mAb	Hu	IHC-Fr, IHC-P, WB
	GTX72194	CD20 antibody [B478 (93-1B3)]	Ms mAb	Hu	FACS, IHC-Fr, IHC-P, IP
	GTX61263	CD20 antibody [EP459Y]	Rb mAb	Hu, Mk	FACS, IHC, IHC-P, WB
	GTX628420	CD20 antibody [GT0008]	Ms mAb	Hu	FACS
	GTX29475	CD20 antibody [L26]	Ms mAb	Hu	IHC-P
	GTX20840	CD20 antibody [L26] (ready-to-use)	Ms mAb	Hu	IHC-P
	★ GTX10326	CD20 antibody [LT20]	Ms mAb	Hu	FACS
	GTX79952	CD20 antibody [MEM-269]	Ms mAb	Hu	FACS, IHC-P
	GTX28237	CD20 antibody [MEM-97]	Ms mAb	Hu	FACS, IP, WB
	GTX103601	CD22 antibody [N2C3]	Rb pAb	Hu	WB
	GTX114015	CD22 antibody [C2C3], C-term	Rb pAb	Hu	WB
	GTX50795	CD22 antibody	Rb pAb	Hu	WB
	★ GTX42250	CD22 antibody [Bu59]	Ms mAb	Hu	FACS
	GTX61269	CD22 antibody [EP498Y]	Rb mAb	Hu, Ms, Rat	WB
GTX75380	CD22 antibody [FPC1]	Ms mAb	Hu	IHC-P	
★ GTX13461	CD22 antibody [HIB22]	Ms mAb	Hu	FACS, IHC-Fr	
GTX80077	CD22 antibody [IS7] (Functional Grade)	Ms mAb	Hu	FACS	
GTX10328	CD22 antibody [LT22]	Ms mAb	Hu	IA	
★ GTX43672	CD22 antibody [Mc64-12] (FITC)	Ms mAb	Hu, Shp, Bov	FACS	
GTX82926	CD22 antibody [Mc54-9]	Ms mAb	Hu	ICC/IF, IP	
★ GTX22526	CD22 antibody [MEM-01]	Ms mAb	Hu, NHuPm	FACS, IP, WB	
★ GTX42248	CD22 antibody [OX-96]	Rat mAb	Ms	FACS	
★ GTX42247	CD22 antibody [OX-97]	Rat mAb	Ms	FACS	
Memory B cell	GTX104406	CD27 antibody	Rb pAb	Hu	IHC-P, WB
	GTX10952	CD27 antibody	Gt pAb	Hu	ELISA, FACS, WB
	GTX52618	CD27 antibody [7H21]	Ms mAb	Hu	FACS, Neut, WB
	★ GTX76479	CD27 antibody [LT27]	Ms mAb	Hu, Shp, RMK, CIMK	FACS, IP
	GTX53433	CD27 antibody [10M2]	Rat mAb	Ms	FACS

Quality Antibodies • Quality Results

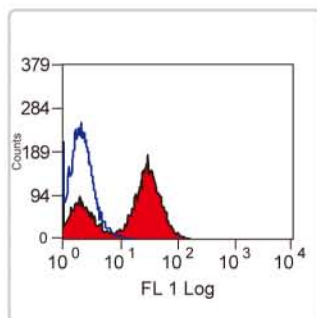
B cell markers

★ Conjugated antibodies available for FACS

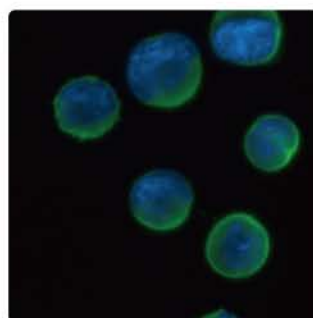
	Cat. No.	Product	Host & Clonality	Reactivity	Application
Activated B cell	GTX72470	CD57 antibody [B321 (NK-1)]	Ms mAb	Hu	FACS, ICC/IF, WB
	GTX73703	CD57 antibody [NK-1]	Ms mAb	Hu	IHC
	★ GTX74868	CD57 antibody [TB01]	Ms mAb	Hu	FACS, IHC-Fr, IHC-P
	GTX113074	CD86 antibody [N1C2]	Rb pAb	Hu	WB
	GTX11698	CD86 antibody	Rb pAb	Ms	WB
	GTX82769	CD86 antibody [1B3]	Ms mAb	Hu	ELISA, WB
	★ GTX41787	CD86 antibody [24F]	Ms mAb	Rat	FACS, IHC-Fr, IP
	GTX41789	CD86 antibody [24F] (Azide free)	Ms mAb	Rat	FACS, IHC-Fr, IP, Functional Assay
	GTX52552	CD86 antibody [7F35]	Ms mAb	Hu	FACS, Neut, WB
	★ GTX74650	CD86 antibody [BU63]	Ms mAb	Hu	FACS, IHC-Fr, IP
	GTX61466	CD86 antibody [EP1158Y]	Rb mAb	Hu, Mk, Rat	FACS, ICC/IF, IHC-Fr, IHC-P, IP, WB
	★ GTX80141	CD86 antibody [GL-1]	Rat mAb	Ms	FACS, ICC/IF, IHC-Fr, IP, Functional Assay
	GTX80142	CD86 antibody [GL-1] (Functional Grade)	Rat mAb	Ms	FACS, ICC/IF, IHC-Fr, IP, Functional Assay
	GTX41785	CD86 antibody [IAH:F853:AG2]	Ms mAb	Chk	FACS
	GTX53134	CD86 antibody [MAB0803]	Rat mAb	Ms	FACS, IHC
	GTX52415	CD86 antibody [MAB0827]	Rat mAb	Ms	Blocking, FACS, IHC-Fr, IP
	★ GTX41784	CD86 antibody [OX-48]	Ms mAb	Rat	FACS
	★ GTX41780	CD86 antibody [PO3]	Rat mAb	Ms	FACS
★ GTX41779	CD86 antibody [RMMP-2]	Rat mAb	Ms	FACS	



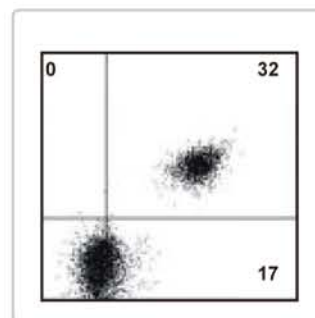
CD19 antibody [C1C3] (GTX101512)
ICC/IF analysis of CD19 expression in Raji cells.



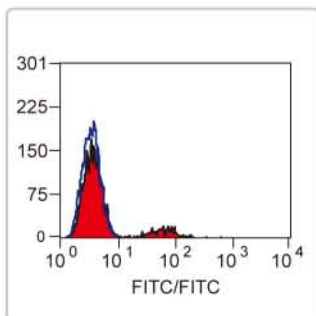
CD19 antibody [6D5] (GTX75012)
FACS analysis of CD19 expression in mouse spleen cells.



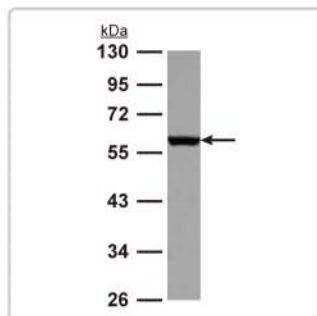
CD20 antibody [C2C3], C-term (GTX100209)
ICC/IF analysis of CD20 expression in K562 cells.



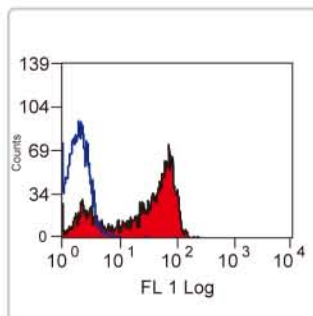
CD20 antibody [MEM-97] (GTX28237)
FACS analysis of CD20 expression in human B lymphocytes.



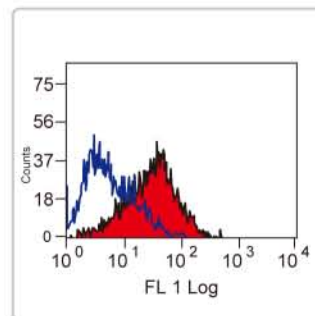
CD22 antibody [Mc64-12] (FITC) (GTX43672)
FACS analysis of CD22 expression in human peripheral blood lymphocytes.



CD27 antibody (GTX104406)
WB analysis of CD27 protein in K562 cells.

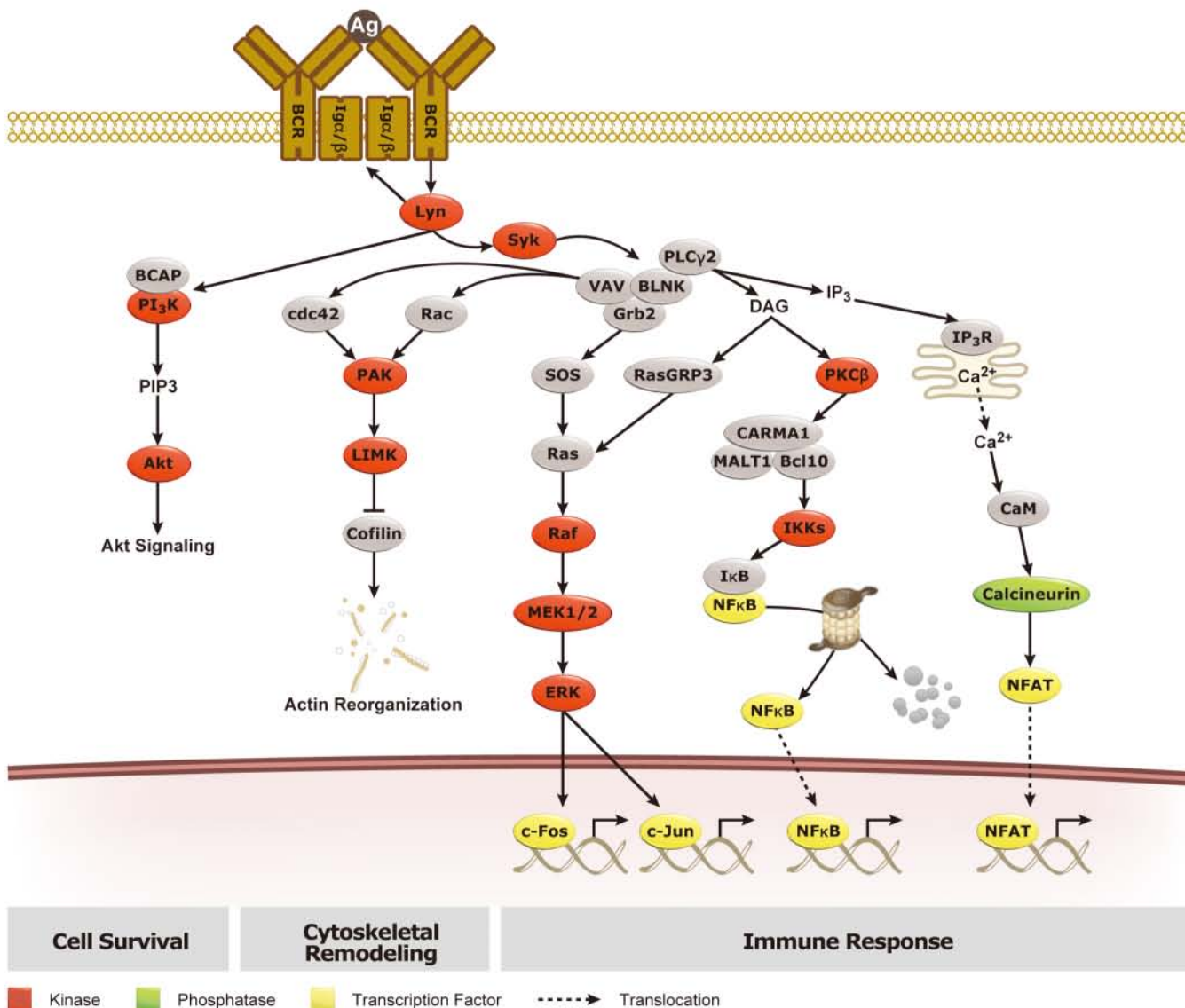


CD27 antibody [LT27] (FITC) (GTX76478)
FACS analysis of CD27 expression in human peripheral blood lymphocytes.



CD86 antibody [24F] (FITC) (GTX43487)
FACS analysis of CD86 expression in rat splenocytes.

B Cell Receptor Signaling



BCR complex

★ Conjugated antibodies available for FACS

Cat. No.	Product	Host & Clonality	Reactivity	Application
GTX24056	CD79a antibody	Rb pAb	Hu	IHC-P
GTX25691	CD79a antibody	Rb pAb	Hu, Ms	ELISA, IHC, IHC-P, WB
GTX37553	CD79a antibody	Rb pAb	Rat	ELISA, IHC-P, WB
GTX16098	CD79a antibody [3E9-H8-A3]	Ms mAb	Hu	ELISA, WB
GTX62182	CD79a antibody [EP3618]	Rb mAb	Hu	FACS, IHC, IHC-P, WB
GTX63019	CD79a antibody [EPR3619]	Rb mAb	Hu	FACS, ICC/IF, WB
GTX23121	CD79a antibody [HM47/A9]	Ms mAb	Hu	ICC/IF, IHC-P, WB
GTX27491	CD79a antibody [HM47/A9] (ready-to-use)	Ms mAb	Hu	IHC-P
★ GTX74022	CD79a antibody [HM57]	Ms mAb	Hu, Ms, Pig, Rat, Gpig, Hrs, Op, Rb	FACS, IHC-Fr, IHC-P
GTX79417	CD79a antibody [SP18]	Rb mAb	Hu	FACS, IHC, IHC-P
GTX79431	CD79a antibody [SP18] (ready-to-use)	Rb mAb	Hu	FACS, IHC, IHC-P
GTX101873	CD79b antibody	Rb pAb	Hu	IHC-P, WB
GTX53917	CD79b antibody	Rb pAb	Hu, Ms, Rat	ICC/IF, IHC, WB
★ GTX41839	CD79b antibody [AT105-1]	Ms mAb	Hu	FACS, IP, WB
★ GTX75968	CD79b antibody [AT107-2]	Rat mAb	Hu, Ms, Dog, Pig, Rat	ELISA, FACS, IP, WB
★ GTX80090	CD79b antibody [HM79]	Hm mAb	Ms	FACS, ICC/IF, IP, WB
★ GTX75401	CD79b antibody [HM79-11]	Hm mAb	Hu, Ms	FACS, IHC-Fr, IP, WB

Downstream kinases of BCR signaling

© Reference

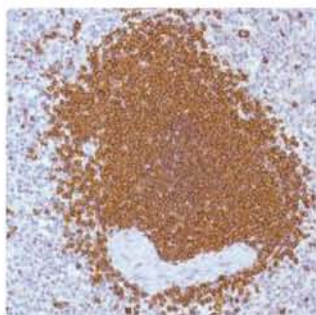
Cat. No.	Product	Host & Clonality	Reactivity	Application
GTX102348	BLK antibody [N3C2], Internal	Rb pAb	Hu	WB
GTX10906	BLK antibody	Rb pAb	Hu, Ms	IP, WB
GTX111546	BLK antibody [N1C1]	Rb pAb	Hu	WB
GTX22390	BLK antibody	Rb pAb	Ms	WB
GTX59617	BLK antibody	Rb pAb	Ms	WB
GTX80405	BLK antibody [1E6]	Ms mAb	Hu	ELISA, FACS, ICC/IF, WB
GTX83150	BLK antibody [9D10B7H6]	Ms mAb	Hu	ELISA, IHC, IHC-P, WB
GTX83154	BLK antibody [9D10B7]	Ms mAb	Hu	ELISA, IHC, IHC-P, WB
GTX83155	BLK antibody [9D10D1]	Ms mAb	Hu	ELISA, IHC, IHC-P
GTX111592	BTK antibody	Rb pAb	Hu	ICC/IF, WB
GTX101346	BTK antibody [C1C3]	Rb pAb	Hu, Ms	IHC-P, WB
GTX84785	BTK antibody [10E10]	Ms mAb	Hu	ICC/IF, IHC, IHC-P, WB
GTX84793	BTK antibody [12D4]	Ms mAb	Hu	FACS, ICC/IF, IHC, IHC-P, WB
GTX84792	BTK antibody [12H4]	Ms mAb	Hu	FACS, ICC/IF, IHC, IHC-P, WB
GTX84786	BTK antibody [13E5]	Ms mAb	Hu	FACS, ICC/IF, WB
GTX84784	BTK antibody [15G8]	Ms mAb	Hu	FACS, ICC/IF, IHC, IHC-P, WB
GTX84787	BTK antibody [1H7]	Ms mAb	Hu	FACS, ICC/IF, IHC, IHC-P, WB
GTX84789	BTK antibody [3A2]	Ms mAb	Hu	FACS, ICC/IF, IHC, IHC-P, WB
GTX84791	BTK antibody [3D11]	Ms mAb	Hu	FACS, ICC/IF, IHC, IHC-P, WB
GTX84788	BTK antibody [3E9]	Ms mAb	Hu	FACS, ICC/IF, IHC, IHC-P, WB
GTX84790	BTK antibody [6H9]	Ms mAb	Hu	FACS, ICC/IF, IHC, IHC-P, WB
GTX83247	BTK antibody [7F12H4]	Ms mAb	Hu, Mk	ELISA, ICC/IF, IHC, IHC-P, WB
GTX61232	Blk antibody [Y440], C-term	Rb mAb	Hu	IP, WB
GTX14393	BTK (phospho Ser180) antibody [3i5]	Ms mAb	Hu	IP, WB
© GTX61791	Blk (phospho Tyr223) antibody [EP420Y]	Rb mAb	Hu, Ms	IP, WB
GTX61314	Blk (phospho Tyr551) antibody [EP267Y]	Rb mAb	Hu	ICC/IF, WB
© GTX101222	LYN antibody	Rb pAb	Hu	ICC/IF, IHC-P, IP, WB
GTX111543	LYN antibody [N2C3]	Rb pAb	Hu, Ms	ICC/IF, IHC-P, WB
© GTX111584	LYN antibody	Rb pAb	Hu	ICC/IF, IP, WB
GTX21890	LYN antibody [LYN-01]	Ms mAb	Hu, Ms, Rat	ICC/IF, IP, WB
GTX61251	Lyn antibody [Y497]	Rb mAb	Hu	IP, WB
GTX83072	LYN antibody [2H8D7]	Ms mAb	Hu	ELISA, WB
GTX88717	LYN antibody, Internal	Gt pAb	Hu	ELISA, WB
GTX61289	Lyn (phospho Tyr507) antibody [EP504Y]	Rb mAb	Hu, Ms, Rat	IHC-P, IP, WB
GTX107459	SYK antibody [N1C1]	Rb pAb	Hu, Ms	IHC-P, WB
GTX100748	SYK antibody [N2C2], Internal	Rb pAb	Hu, Ms, Rat	ICC/IF, IHC-P, IP, WB
GTX15528	Syk antibody	Rb pAb	Hu	IHC-P, IP, WB
GTX50667	syk antibody	Rb pAb	Hu	ICC/IF, IHC, IHC-P, WB

Downstream kinases of BCR signaling

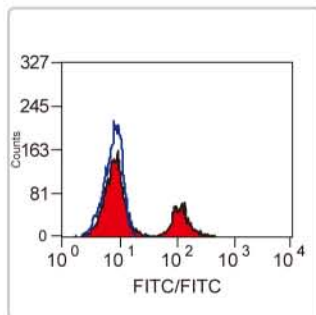
Cat. No.	Product	Host & Clonality	Reactivity	Application
GTX15529	Syk antibody (ready-to-use)	Rb pAb	Hu	IHC-P
GTX61315	Syk antibody [EP573Y]	Rb mAb	Hu	ICC/IF, IHC-P, WB
GTX23113	Syk antibody [4D10.1]	Ms mAb	Hu	IHC-P, IP, WB
GTX83029	SYK antibody [8C1A3]	Ms mAb	Hu	ELISA, WB
GTX15238	Syk antibody [SPM147]	Ms mAb	Hu	IHC, IHC-P, IP, WB
GTX12862	Syk (phospho Tyr323) antibody	Rb pAb	Hu, Ms	WB
GTX50355	syk (phospho Tyr323) antibody	Rb pAb	Hu	ICC/IF, IHC, IHC-P, WB
GTX78933	Syk (phospho Tyr323) antibody	Rb pAb	Hu, Ms, Rat	IHC
GTX61759	Syk (phospho Tyr323) antibody [EP573Y]	Rb mAb	Hu	ICC/IF, IHC-P, WB
GTX61761	Syk (phospho Tyr525) antibody [EP575(2)Y]	Rb mAb	Hu	ICC/IF, WB

Adaptor molecules of BCR signaling

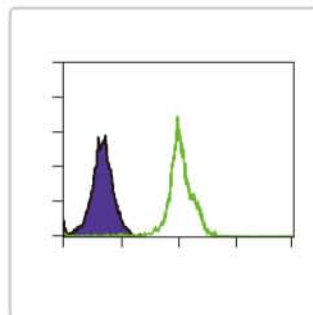
Cat. No.	Product	Host & Clonality	Reactivity	Application
GTX15008	BLNK antibody	Rb pAb	Ms	WB
GTX42660	BLNK antibody	Rb pAb	Ms	WB
GTX22230	BLNK antibody	Gt pAb	Hu, Ms	WB
GTX89949	BLNK / SLP-65 antibody, C-term	Gt pAb	Hu	ELISA, WB
GTX61230	BLNK antibody [Y491], C-term	Rb mAb	Hu, Ms, Rat	IHC, IHC-P, IP, WB
GTX60463	BLNK antibody [5G9]	Ms mAb	Hu, Ms	ELISA, FACS, ICC/IF, IHC, WB
GTX24474	BLNK (phospho Tyr84) antibody	Rb pAb	Hu, Ms	IHC, WB
GTX101971	BCAP31 antibody [N1C3]	Rb pAb	Hu	ICC/IF, IHC-P, WB
GTX111939	BCAP31 antibody	Rb pAb	Hu, Ms, Rat	ICC/IF, IHC-P, WB
GTX10924	BCAP31 / BAP31 antibody, C-term	Gt pAb	Hu	ELISA, WB



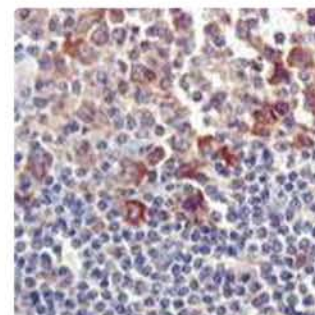
CD79a antibody [SP18] (GTX79417)
IHC-P analysis of CD79a expression in human spleen tissue.



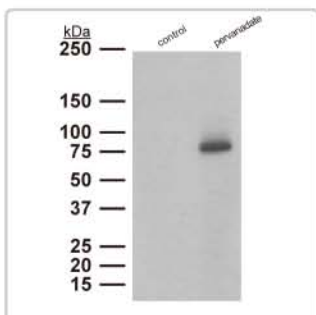
CD79b antibody [AT107-2] (FITC) (GTX75969)
FACS analysis of CD79b expression in rat peripheral blood lymphocytes.



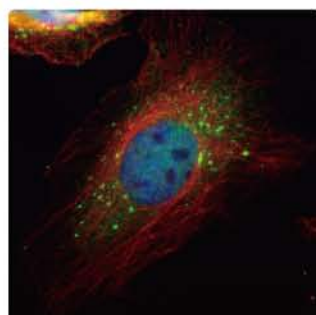
BLK antibody [1E6] (GTX80405)
FACS analysis of BLK expression in HL-60 cells.



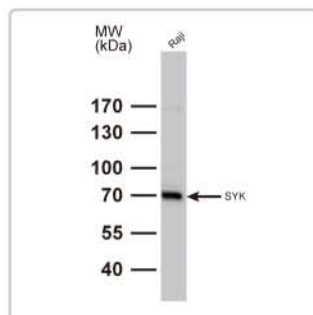
BTK antibody [7F12H4] (GTX83247)
IHC-P analysis of BTK expression in human lymph follicle tissues.



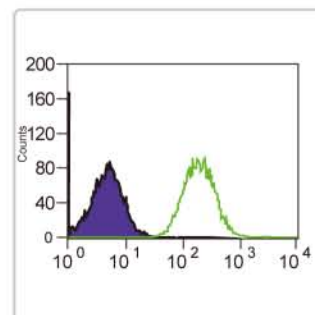
BTK (phospho Tyr223) antibody [EP420Y] (GTX61791)
WB analysis of BTK (pTyr223) protein in Ramos cells treated w/wo pervanadate.



LYN antibody (GTX111584)
ICC/IF analysis of LYN expression in HeLa cells.



SYK antibody [N2C2], Internal (GTX100748)
WB analysis of SYK protein in Raji cells.



BLNK antibody [5G9] (GTX60463)
FACS analysis of BLNK expression in NIH-3T3 cells.

Custom Antibody Services

Your Idea, Our Laboratory

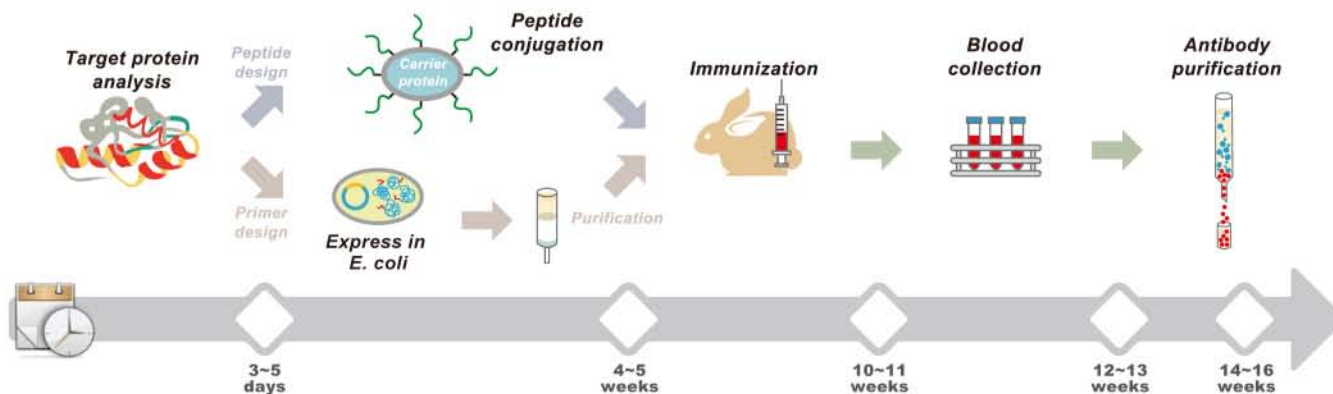
Antigen Preparation, Immunization, Serum Titer Report, Antibody Purification, Shipment, Datasheet

Let GeneTex become your personal **custom** antibody production facility. GeneTex has produced **over 25,000** polyclonal antibodies. Use our experience and expertise to help advance your research.

Featured characteristics

- Proprietary bioinformatics database identifies the ideal target epitope and optimizes synthesis, solubility and antigenicity
- Efficient production of high quality antigens using prokaryotic expression or peptide conjugation
- Enhanced cocktail immunization technique produces high-titer antiserum
- Highly specific antigen affinity purification
- Online tracking system

Flow Chart



Please contact us for details, pricing and if you have any questions about our custom antibody service.
Email: custom_service@genetex.com



International

Tel 886.3.6208988
Fax 886.3.6209098
E-mail international@genetex.com

USA

Tel 1.949.553.1900
Fax 1.949.309.2888
Toll-free 1.877.436.3839
E-mail info@genetex.com



www.genetex.com

www.genetex.com

PB-A008-150504