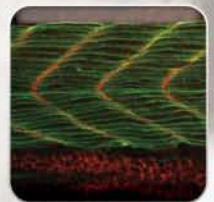
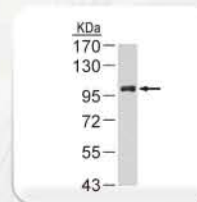
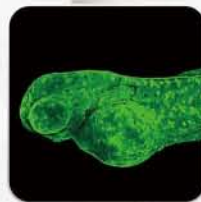
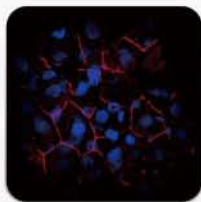
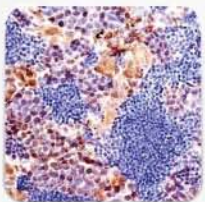


Zebrafish

Antibodies

Quality Antibodies
Quality Results





About GeneTex

Starting as a small scientist-founded company in San Antonio, Texas, GeneTex has grown to become one of the top antibody manufacturers and has solidified its position in the life sciences industry. Our corporate mission, to provide our customers with quality reagents and to accelerate life sciences research, reflects the philosophy and approach we employ when we manufacture our products. Through extensive research, development, and quality assurance testing, we have produced and validated a comprehensive collection of antibodies and research reagents. GeneTex provides convenient trial-size (10µl), full-size (100µl) and bulk-quantity ordering options for many of our products.

We also offer **customized antibody** services for both monoclonal and polyclonal antibodies.

We are uniquely capable of providing **technical support** and troubleshooting assistance for our customers.



Table of Contents

Highlighted Antibodies

- Development 02
- Cancer Research 03
- Epigenetics 03
- Metabolism 04
- Neuroscience 04
- Signal Transduction 05
- Stem Cell Development 06
- Markers and Controls 06

Full product listing

- Numeric, A, B, C 07
- D, E 08
- F, G, H, I 09
- K, L, M, N 10
- O, P, R, S 11
- T, U 12
- V, W, X, Y, Z 13

Application Key

- IHC** – Immunohistochemistry
- IHC-Fr** – Immunohistochemistry, frozen sections
- IHC-P** – Immunohistochemistry, paraffin-embedded sections
- IHC-Wm** – Immunohistochemistry, whole mount
- WB** – Western blot
- IP** – Immunoprecipitation

Host Key

- Rb** – Rabbit
- Ms** – Mouse
- Shp** – Sheep
- Gt** – Goat



Hatchling Products!

GeneTex is pleased to offer FREE samples of our zebrafish hatchling products. These are "pipeline" zebrafish antibodies that have yet to be run through our validation process. You can request up to three antibodies at a time and only pay for shipping and handling. If you submit your results with images and protocols within 30 days, GeneTex will provide a full-size vial of the same antibody free of charge.

For a complete listing, please visit our website at www.genetex.com/zebrafish.

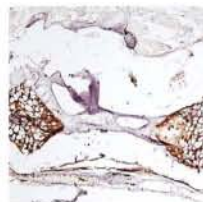
To request hatchling antibodies or to offer any suggestions on how to better serve the zebrafish research community, please email zebrafish@genetex.com.

Development

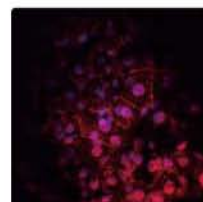
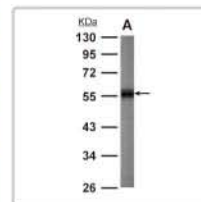
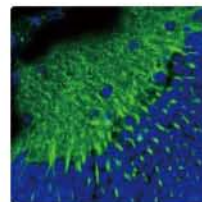
Zebrafish have proven to be ideal organisms for the study of developmental biology as their embryogenesis closely resembles that seen in higher vertebrates. In addition, their embryonic development is quite brisk, with most major organ systems established within a day after fertilization. The embryos are transparent, facilitating direct observation of these events in living animals. The zebrafish research community has also identified a vast number of mutations that impact embryonic development, and the zebrafish system is readily amenable to genetic manipulation as well as high-throughput drug screening.

Highlighted zebrafish antibodies for Development

Cat. No.	Product Name	Host & Clonality	Application
GTX105679	wnt3 antibody	Rb pAb	IHC-P, WB
GTX124512	ctnnb1 antibody	Rb pAb	IHC-P, WB
GTX127370	flil1 antibody	Rb pAb	WB
GTX125885	cdh2 antibody	Rb pAb	IHC, WB
GTX128266	spi1 antibody	Rb pAb	IHC-Wm
GTX128379	mpx antibody	Rb pAb	IHC-Wm
GTX127988	col2a1a antibody	Rb pAb	IHC-Wm
GTX127287	fabp7a antibody	Rb pAb	WB
GTX127919	cyp26b1 antibody	Rb pAb	IHC-P
GTX128002	krt18 antibody	Rb pAb	IHC-Wm
GTX124453	rpl13a antibody	Rb pAb	IHC-P, WB
GTX124504	acta2 antibody	Rb pAb	IHC-P, WB
GTX124321	gnat1 antibody	Rb pAb	IHC-P, WB
GTX127383	eavl1 antibody	Rb pAb	IHC-Wm, WB
GTX128356	vegfaa antibody	Rb pAb	IHC-Wm
GTX77895	IRF8 antibody	Rb pAb	IHC, IHC-P, WB
GTX48597	lmo2 antibody	Rb pAb	ELISA, ICC/IF, IHC-P, WB
GTX128088	nhp211 antibody	Rb pAb	IHC-Wm
GTX124295	nme2b.1 antibody	Rb pAb	IHC-P, IHC-Wm, WB
GTX124292	nop58 antibody	Rb pAb	IHC-P, IHC-Wm, WB
GTX128089	ogt1 antibody	Rb pAb	IHC-Wm
GTX124316	pa2g4a antibody	Rb pAb	IHC-P, WB
GTX127384	ppar δ b antibody	Rb pAb	IHC-Wm
GTX124424	ppp1caa antibody	Rb pAb	IHC-P, WB
GTX124402	ppp3r1b antibody	Rb pAb	IHC-P, WB
GTX127396	ppp6c antibody	Rb pAb	IHC-Wm, WB
GTX124445	prkci antibody	Rb pAb	IHC-P, WB
GTX125515	prkcz antibody	Rb pAb	WB
GTX128199	prmt1 antibody	Rb pAb	IHC-Wm
GTX128081	psma6a antibody	Rb pAb	IHC-Wm
GTX124458	puf60a antibody	Rb pAb	IHC-P, IHC-Wm, WB
GTX124305	pygb antibody	Rb pAb	IHC-P, IHC-Wm, WB
GTX124390	pygma antibody	Rb pAb	IHC-P, WB
GTX124406	Tuba1 antibody	Rb pAb	IHC, IHC-P, WB
GTX127390	Rpl9 antibody	Rb pAb	IHC-Wm, WB
GTX124537	Ef1a antibody	Rb pAb	IHC-P, WB
GTX127369	Tnnc1a antibody	Rb pAb	IHC-Wm



Tuba1 antibody (GTX124406): Rb pAb, IHC, IHC-P, WB



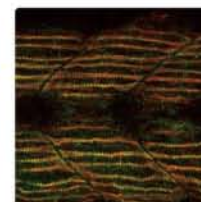
Ctnnb1 (β-catenin) Antibody (GTX124481): Rb pAb, IHC-P, IHC-WM, WB

This image was provided courtesy of the Schilling Lab at UC, Irvine.



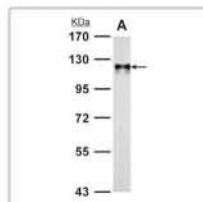
Otx2 Antibody (GTX124332): Rb pAb, IHC-Fr, IHC-P, WB

This image was provided courtesy of the Schilling Lab at UC, Irvine.

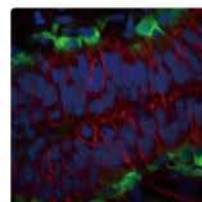


Tnnc1a Antibody (GTX127369): Rb pAb, IHC-Wm

Whole mount immunohistochemical analysis of zebrafish embryo using Tnnc1a antibody.



Cdh2 Antibody (GTX125885): Rb pAb, IHC, WB



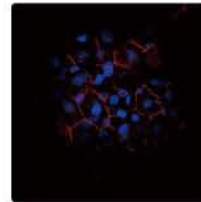
This image was provided courtesy of the Schilling Lab at UC, Irvine.

Cancer Research

Zebrafish are very useful for modeling human cancers because of their striking similarity to humans in terms of their physiological and pathological responses. This is facilitated by their technical manipulability that allows tumor induction, cancer cell transplantation, and forward/reverse genetic screening. Specific areas of ongoing research interest include (1) plasmid-based multigenic screening of putative cancer genes, (2) chemical library screening using zebrafish embryos, (3) tumor metastasis modeling, and (4) cancer epigenetics interrogation. The unique features of the zebrafish system hold great promise for significant advances in these aspects of cancer biology. In addition, an expanding collection of zebrafish fluorescently-labeled tumor transgenic lines makes monitoring of tumor progression very straightforward. This is a significant advantage over other vertebrate model systems, including the mouse, in which pathological examination cannot be conducted without surgical intervention, imaging, or postmortem dissection.

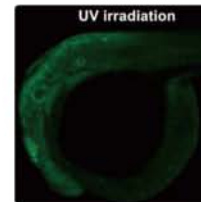
Highlighted zebrafish antibodies for Cancer Research

Cat. No.	Product Name	Host & Clonality	Application
GTX128135	p53 antibody	Rb pAb	IHC-Wm, WB
GTX124498	kras antibody	Rb pAb	WB
GTX127923	akt3 antibody	Rb pAb	IHC-Wm
GTX124365	Ccnd1 (cyclin D1) antibody	Rb pAb	IHC-P, IHC-Fr, WB
GTX124483	hsp90ab1 antibody	Rb pAb	IHC-P, IHC-Wm, WB
GTX128207	mmp14a+b antibody	Rb pAb	IHC-Wm
GTX124472	ilks antibody	Rb pAb	IHC-P, IHC-Wm, WB
GTX124446	mapk3 antibody	Rb pAb	IHC-P, WB
GTX128243	col1a1a antibody	Rb pAb	IHC-Wm
GTX128241	csnk1a1 antibody	Rb pAb	IHC-Wm
GTX125890	E-cadherin antibody	Rb pAb	IHC
GTX124496	PCNA antibody	Rb pAb	IHC-P, WB, IHC-Wm

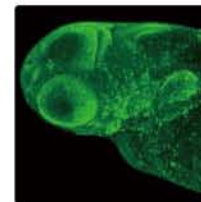
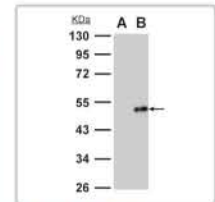


E-cadherin Antibody (GTX125890): Rb pAb, IHC-Wm

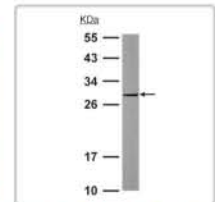
This image was provided courtesy of the Schilling Lab at UC, Irvine.



p53 Antibody (GTX128135): Rb pAb, WB, IHC-Wm



PCNA Antibody (GTX124496): Rb pAb, IHC-P, WB, IHC-Wm



Epigenetics

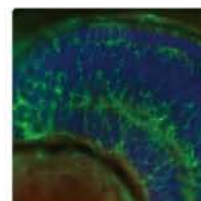
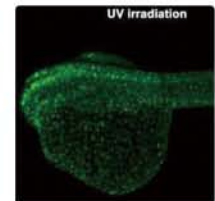
With the well-documented utility of the zebrafish system for studying development and cancer, there is much excitement now to expand their use in the field of epigenetics. Mice carrying mutations in key epigenetic mediators often die very early in embryogenesis, making study of gene expression changes exceptionally difficult. Zebrafish embryos bearing mutations in these types of essential genes often survive longer due to maternally-produced stores of these factors. This convenient aspect of zebrafish biology, together with the advantages that make these animals so important for developmental biology research, have encouraged researchers to refine classic biochemical procedures (e.g., ChIP-seq and RNA-seq) to address key epigenetic questions using this system. This is clearly an area of great interest.

Highlighted zebrafish antibodies for Epigenetics

Cat. No.	Product Name	Host & Clonality	Application
GTX124363	hdac1 antibody	Rb pAb	WB
GTX124499	hdac1 antibody	Rb pAb	IHC-P, IHC-Wm, WB
GTX128086	h2afz antibody	Rb pAb	IHC-Wm
GTX128087	h2afz antibody	Rb pAb	IHC-Wm
GTX124370	nap111 antibody	Rb pAb	WB
GTX124466	tbl1 antibody	Rb pAb	IHC-P, IHC-Wm, WB
GTX124349	hdac3 antibody	Rb pAb	IHC-P, IHC-Wm, WB
GTX128008	h3f3a antibody	Rb pAb	IHC-Wm
GTX128199	prmt1 antibody	Rb pAb	IHC-Wm
GTX128210	psmc3 antibody	Rb pAb	IHC-Wm

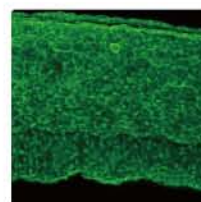


Histone H2A.XS139ph (pS139) antibody (GTX127342): Rb pAb, IHC-P, IHC-Wm

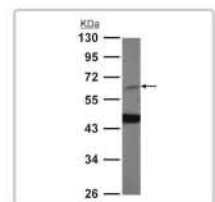


Psmc3 Antibody (GTX128210): Rb pAb, IHC-Wm

This image was provided courtesy of the Schilling Lab at UC, Irvine.



Hdac1 Antibody (GTX124499): Rb pAb, IHC-P, WB, IHC-Wm

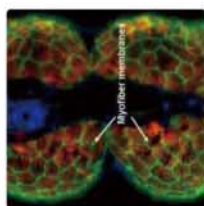


Metabolism

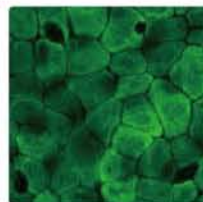
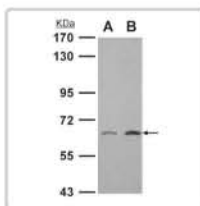
Zebrafish may also prove to be excellent models for human metabolic diseases. A confluence of technical capabilities and organizational resources is poised to potentially allow zebrafish to be of immense value to the study of metabolism. While morpholinos are useful in the first five days of development for transient knockdown of gene expression, mutation with ethylnitrosourea (ENU) or more targeted gene editing with ZFN, TALEN or CRISPR-Cas9 systems offers the opportunity to study individual metabolic gene function in great detail. In addition, the sequenced zebrafish genome and the Zebrafish Mutation Project will be extremely valuable resources for developing models of complex human metabolic disorders (e.g., the metabolic syndrome). The zebrafish also possesses all of the key organs involved in metabolic control in humans, and whole-animal studies are essential for study of the intricate interplay between organs and endocrine signaling.

Highlighted zebrafish antibodies for Metabolism

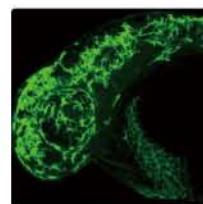
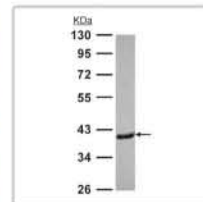
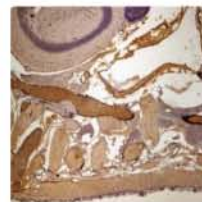
Cat. No.	Product Name	Host & Clonality	Application
GTX124420	lcp1 antibody	Rb pAb	IHC-P, WB
GTX124415	rdh10a antibody	Rb pAb	IHC-P, WB, IHC-Wm
GTX124348	aldh2a antibody	Rb pAb	IHC-P, WB
GTX124502	gapdh antibody	Rb pAb	IHC-P, WB
GTX124296	gapdhs antibody	Rb pAb	WB
GTX124368	col1a1a antibody	Rb pAb	IHC-P, WB
GTX124473	sdha antibody	Rb pAb	IHC-P, WB
GTX124432	Pdha1a antibody	Rb pAb	IHC-P, WB, IHC-Wm
GTX124460	Gad1b antibody	Rb pAb	IHC, WB, IHC-Wm



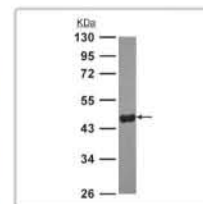
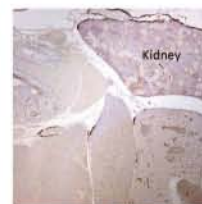
Gad1b Antibody (GTX124460): Rb pAb, IHC, WB, IHC-Wm



Rdh10a Antibody (GTX124415): Rb pAb, IHC-P, WB, IHC-Wm



Pdha1a Antibody (GTX124432): Rb pAb, IHC-P, WB, IHC-Wm



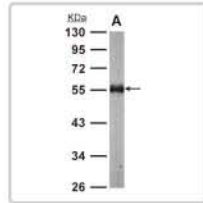
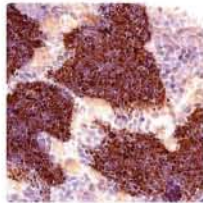
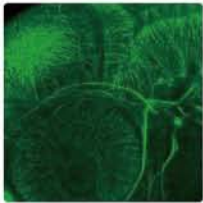
Neuroscience

Zebrafish are increasingly being used for neuroscience research in conjunction with other established mammalian and invertebrate model systems. The transparency of the larval zebrafish body allows direct visualization of the CNS, and the small brain can be sectioned and studied in a whole-mount format, facilitating better visualization of neuroanatomical connections. In addition, the zebrafish system is amenable to CNS imaging. Most exciting is the progress being made in the development of zebrafish models for neoplastic, neurological, and neuropsychiatric disorders affecting normal CNS function, ranging from epilepsy to depression. Zebrafish models for these types of maladies would be exceptionally useful for new drug screening. Finally, there are an increasing number of studies demonstrating the utility of zebrafish for cognitive and behavioral studies, including in the new field of behavioral phenomics. Thus, neuroscientists using zebrafish may be positioned on the threshold of potentially revolutionary discoveries.

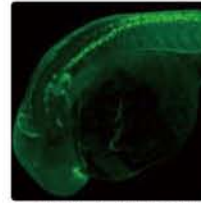
Highlighted zebrafish antibodies for Neuroscience

Cat. No.	Product Name	Host & Clonality	Application
GTX124303	Tuba1l antibody	Rb pAb	IHC-P, IHC-Wm, WB
GTX128365	Elavl3 (HuC) antibody	Rb pAb	IHC-Wm
GTX124422	elav4 (HuD) antibody	Rb pAb	IHC-P, IHC-Wm, WB
GTX124332	otx2 antibody	Rb pAb	IHC-P, IHC-Wm, WB
GTX128201	islet1 antibody	Rb pAb	IHC-Wm
GTX27260	GFAPR40 antibody	Rb pAb	CC, ICC/IF, IHC-F, IHC-P, IP, WB
GTX124360	th antibody	Rb pAb	WB

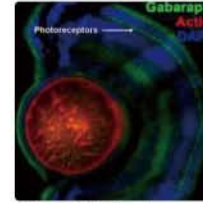
Cat. No.	Product Name	Host & Clonality	Application
GTX128482	gabarapl2 antibody	Rb pAb	IHC
GTX124445	prkci antibody	Rb pAb	IHC-P, WB
GTX124460	gad1b antibody	Rb pAb	IHC-P, IHC-Wm, WB
GTX128127	pax2 antibody	Rb pAb	IHC-Wm, WB
GTX128843	pax6a+b antibody	Rb pAb	IHC-Wm
GTX124383	hspa8 antibody	Rb pAb	IHC-P, WB
GTX124294	sod2 antibody	Rb pAb	IHC-P, IHC-Wm, WB



Tuba1 Antibody (GTx124303): Rb pAb, IHC-P, WB, IHC-Wm



Pax2 Antibody (GTx128127): Rb pAb, IHC-Wm, WB



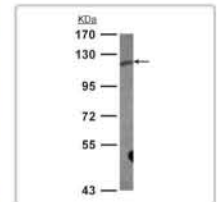
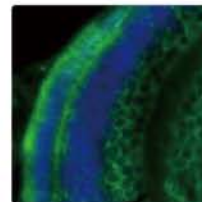
Gabarapl2 Antibody (GTx128482): Rb pAb, IHC

Signal Transduction

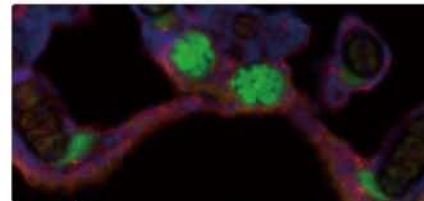
The creation of transgenic zebrafish that can express reporter proteins driven by specific signaling pathway responsive elements is becoming a valuable approach for the study of signal transduction. Once these transgenic lines are fully validated, they can be used in different ways to interrogate various aspects of a signaling pathway. As more of these lines are generated, it will become more common to analyze them using combinations of different technologies, including imaging and system biology methodologies. Given that these signaling pathways are generally quite similar between zebrafish and mammals, the potential impact of these zebrafish transgenic lines on developmental biology, cancer, and drug discovery is difficult to overstate.

Highlighted zebrafish antibodies for Signal Transduction

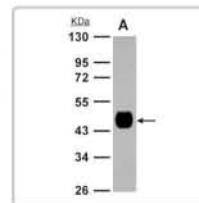
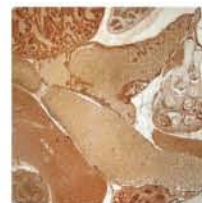
Cat. No.	Product Name	Host & Clonality	Application
GTx124538	ef1a antibody	Rb pAb	IHC-P, WB
GTx128200	bmpr1ba+b antibody	Rb pAb	IHC-Wm
GTx124405	ckma antibody	Rb pAb	IHC-P, IHC-Wm, WB
GTx124367	acta2 antibody	Rb pAb	WB
GTx124964	tuba1 antibody	Rb pAb	IHC-P, WB
GTx128811	Gnb21 (RACK) antibody	Rb pAb	IHC-Wm
GTx125242	acta1b antibody	Rb pAb	IHC-P, WB
GTx124622	gnat1 antibody	Rb pAb	IHC-P, WB
GTx124990	tubb5 antibody	Rb pAb	WB
GTx124447	mapk3 antibody	Rb pAb	IHC-P, WB
GTx124771	mtor antibody	Rb pAb	IHC-P, WB
GTx124295	nme2b.1 antibody	Rb pAb	IHC-P, IHC-Wm, WB
GTx124499	hdac1 antibody	Rb pAb	IHC-P, IHC-Wm, WB
GTx124435	HIF2 alpha antibody	Rb pAb	ChIP assay, IHC-P, WB
GTx124465	hmpab antibody	Rb pAb	IHC-P, IHC-Wm, WB
GTx124287	katna1 antibody	Rb pAb	IHC-P, IHC-Wm, WB
GTx128204	Kcnh1 (K ⁺ channel) antibody	Rb pAb	IHC-Wm
GTx124408	camk2d2 antibody	Rb pAb	IHC-P, WB, IHC-Wm
GTx124361	krt8 antibody	Rb pAb	IHC-P, WB
GTx127999	krt8 antibody	Rb pAb	IHC-Wm
GTx124420	lcp1 antibody	Rb pAb	IHC-P, WB
GTx124290	lin7a antibody	Rb pAb	IHC-P, IHC-Wm, WB
GTx127387	mak antibody	Rb pAb	IHC-Wm
GTx125115	mapk3 (ERK1) antibody	Rb pAb	IHC-P, WB
GTx61220	src antibody	Rb mAb	ICC/IF, IHC, IHC-P, WB
GTx124378	Ctnna antibody	Rb pAb	IHC-Fr, IHC-P, WB, IHC-Wm



Ctnna Antibody (GTx124378): Rb pAb, IHC-P, WB, IHC-Wm

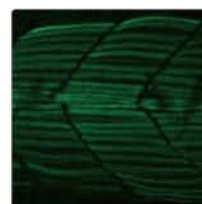
Kcnh1 (K⁺ Channel) (GTx128204) Rb pAb, IHC-Wm

This image was provided courtesy of the Schilling Lab at UC, Irvine.



Mapk3 (ERK1) antibody (GTx125115): Rb pAb, IHC-P, WB

WB analysis using Mapk3 (ERK1) antibody on zebrafish brain extracts



Gnb21 (RACK) Antibody (GTx128811): Rb pAb, IHC-Wm

Whole mount immunohistochemical analysis of zebrafish embryo using Gnb21 antibody



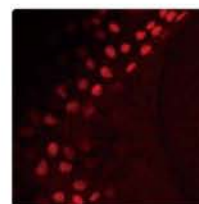
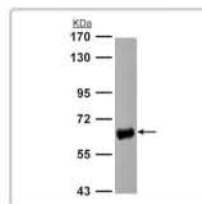
There's a zAb for that
www.genetex.com/zebrafish

Stem Cell Development

The zebrafish system is ideal for studying stem cell biology. First, the conservation of key genes and signaling pathways between zebrafish and mammals broadens the research significance. Second, the embryos develop outside the female and the larvae are nearly transparent, affording the opportunity for direct visualization of cell differentiation, migration, and tissue regeneration. Third, the constantly expanding collection of zebrafish transgenic lines can be used to follow developmental dynamics in embryos for different stem cell systems (e.g., hematopoietic). These advantages have been expanded by the generation of a completely transparent line (Casper) that allows tracking of different tissue-specific stem cells in both developmental and regenerative contexts. In addition, methods to culture stem cells derived from zebrafish embryos have been developed to facilitate *in vitro* analyses.

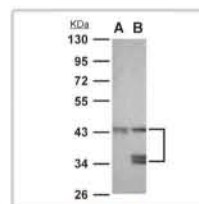
Highlighted zebrafish antibodies for Stem Cell Development

Cat. No.	Product Name	Host & Clonality	Application
GTX127371	flil1 antibody	Rb pAb	WB
GTX124302	aldh1a2 antibody	Rb pAb	IHC-P, WB
GTX124336	tbx5a antibody	Rb pAb	IHC-P, WB
GTX127279	gata6 antibody	Rb pAb	IHC-P, WB
GTX124965	tuba1 antibody	Rb pAb	IHC-P, WB
GTX124433	efna5b antibody	Rb pAb	IHC-P, WB
GTX124334	acvr2a antibody	Rb pAb	IHC-P, WB
GTX124422	elavl4 antibody	Rb pAb	IHC-P, IHC-Wm, WB
GTX128209	Chordin antibody	Rb pAb	IHC-Wm
GTX127331	vmhc antibody	Rb pAb	IHC-P
GTX124492	raraa antibody	Rb pAb	IHC-P, WB
GTX124660	TP63 antibody	Rb pAb	IHC, WB, IHC-Wm
GTX124477	Sox2 antibody	Rb pAb	IHC-Fr, WB



Immunohistochemical analysis of zebrafish embryo using Tp63 antibody

TP63 Antibody (GTX124660): Rb pAb, IHC-Wm, WB



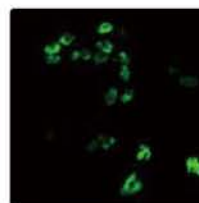
30 ug of whole zebrafish (A) zebrafish eye (B) lysate

Sox2 Antibody (GTX124477): Rb pAb, IHC-Fr, WB

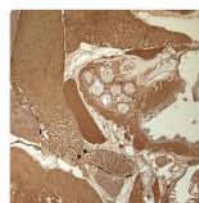
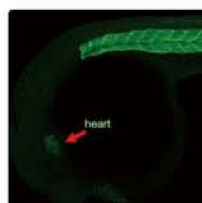
Markers and Controls

Highlighted Markers and Controls

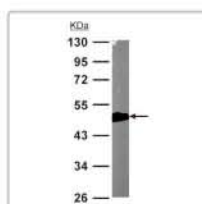
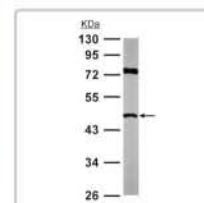
Cat. No.	Product Name	Host & Clonality	Application
GTX124400	bactin1 antibody	Rb pAb	IHC-P, IHC-Wm, WB
GTX124559	smad5 antibody	Rb pAb	IHC-P, WB
GTX128266	spl1 antibody	Rb pAb	IHC-Wm
GTX128379	mpx antibody	Rb pAb	IHC-Wm
GTX124569	fgfr1a antibody	Rb pAb	WB
GTX124546	rarga antibody	Rb pAb	WB
GTX127288	acta2 antibody	Rb pAb	IHC-P
GTX124597	atp1a1a.4 antibody	Rb pAb	IHC-P, IHC-Wm, WB
GTX124406	tuba1 antibody	Rb pAb	IHC-P, WB
GTX124484	acta1b antibody	Rb pAb	IHC-P, WB
GTX124485	tubb5 antibody	Rb pAb	IHC-P, WB
GTX128934	Ckmt2a (Zgc:56085) antibody	Rb pAb	Polyclonal
GTX124289	mab2111 antibody	Rb pAb	IHC-P, IHC-Wm, WB
GTX124446	mapk3 antibody	Rb pAb	IHC-P, WB
GTX124417	smarcb1 antibody	Rb pAb	IHC-P, WB
GTX124337	smarcb1a antibody	Rb pAb	IHC-P, IHC-Wm, WB
GTX128263	mitfa (nacre) antibody	Rb pAb	IHC-Wm
GTX124366	Acta2 antibody	Rb pAb	IHC-P, WB, IHC-Wm
GTX124462	Actc1a antibody	Rb pAb	IHC-P, WB, IHC-Wm



Mpx Antibody (GTX128379): Rb pAb, IHC-Wm



Acta2 Antibody (GTX124366): Rb pAb, IHC-P, WB, IHC-Wm



Whole mount immunohistochemical analysis of zebrafish embryo using Actc1a antibody

Actc1a Antibody (GTX124462): Rb pAb, IHC-P, WB, IHC-Wm

Full Product List

Numeric

Cat. No.	Product Name	Host & Clonality	Application
GTX48540	14-3-3 gamma antibody [HS23]	Ms mAb	IHC-P, WB
GTX21884	5-Methyl Cytosine antibody	Shp pAb	FACS, ICC/IF, IHC, IHC-Fr, IP, WB

A

Cat. No.	Product Name	Host & Clonality	Application
GTX124449	Acat1 antibody	Rb pAb	WB
GTX124330	Aco2 antibody	Rb pAb	IHC-P, WB, IHC-Wm
GTX124484	Acta1b antibody	Rb pAb	IHC, IHC-P, WB
GTX125242	Acta1b antibody	Rb pAb	IHC-P, WB, IHC-Wm
GTX124366	Acta2 antibody	Rb pAb	IHC-P, WB, IHC-Wm
GTX124367	Acta2 antibody	Rb pAb	WB
GTX124504	Acta2 antibody	Rb pAb	IHC-P, WB
GTX124505	acta2 antibody	Rb pAb	IHC-P, WB
GTX127288	Acta2 antibody	Rb pAb	IHC, IHC-P
GTX128981	Acta2 antibody	Rb pAb	IHC-Wm
GTX128985	Actb1 antibody	Rb pAb	IHC-Wm
GTX124462	Actc1a antibody	Rb pAb	IHC-P, WB, IHC-Wm
GTX11003	Actin antibody [AC-40]	Ms mAb	WB, Dot, ELISA, ICC/IF, IHC-Fr, IHC-P
GTX25694	Actin smooth muscle antibody	Rb pAb	IHC, ELISA, ICC/IF, IHC-P, WB
GTX124437	Actn1 antibody	Rb pAb	WB
GTX124379	Actn2 antibody	Rb pAb	IHC-P, WB
GTX124439	Actn2 antibody	Rb pAb	IHC-P, WB, IHC-Wm
GTX124440	Actn3a antibody	Rb pAb	WB, IHC-Wm
GTX124721	Actn4 antibody	Rb pAb	WB, IHC-Wm
GTX124334	Acvr2a antibody	Rb pAb	IHC-P, WB
GTX128840	Acvr2b antibody	Rb pAb	IHC-Wm
GTX128841	Add1 antibody	Rb pAb	IHC-Wm
GTX128931	Add1 antibody	Rb pAb	IHC-Wm
GTX124428	Adipor1b antibody	Rb pAb	IHC-P, WB
GTX12418	ADP ribosylation factor antibody	Shp pAb	WB, WB
GTX129639	Adrbk2 antibody	Rb pAb	IHC-Wm
GTX129641	Adrbk2 antibody	Rb pAb	IHC-Wm
GTX128987	Ahcyl1 antibody	Rb pAb	IHC-Wm
GTX129649	Ahcyl2 antibody	Rb pAb	IHC-Wm
GTX127923	Akt3 antibody	Rb pAb	IHC-Wm
GTX127887	Alas2 antibody	Rb pAb	WB
GTX128399	Alcama antibody	Rb pAb	IHC
GTX124302	Aldh1a2 antibody	Rb pAb	WB, IHC-Wm
GTX128935	Aldh1a2 antibody	Rb pAb	IHC-Wm
GTX129650	Aldh1a2 antibody	Rb pAb	IHC-Wm
GTX124348	Aldh2a antibody	Rb pAb	IHC-P, WB, IHC-Wm
GTX124482	Aldh2a antibody	Rb pAb	IHC-P, WB, IHC-Wm
GTX124328	Aldh7a1 antibody	Rb pAb	IHC-P, WB, IHC-Wm
GTX124306	Aldob antibody	Rb pAb	IHC-P, WB
GTX124329	Aldocb antibody	Rb pAb	IHC-P, WB
GTX628802	alpha Tubulin antibody [GT114]	Ms mAb	WB, ICC/IF, IHC-P, WB
GTX124291	Angptl1 antibody	Rb pAb	WB
GTX128004	Ap1g1 antibody	Rb pAb	IHC-Wm
GTX124347	Arf1 antibody	Rb pAb	IHC-P, WB
GTX124413	Arf6 antibody	Rb pAb	WB
GTX124429	Arpc1a antibody	Rb pAb	IHC-P, WB
GTX11798	ARPC2 antibody	Gi pAb	ELISA, IHC, WB
GTX124459	Arpc2 antibody	Rb pAb	IHC-P, WB
GTX48500	Ascl1a (zebrafish) antibody, Internal	Gi pAb	ELISA

Cat. No.	Product Name	Host & Clonality	Application
GTX85759	ATG4B antibody	Rb pAb	IHC-P, WB
GTX48583	ATG5 antibody	Rb pAb	ELISA, ICC/IF, IHC, IHC-P, WB
GTX48584	ATG5 antibody (Biotin)	Rb pAb	ELISA, ICC/IF, IHC-P, WB
GTX48586	ATG5 antibody (DyLight 488)	Rb pAb	ELISA, IHC-P, WB
GTX48588	ATG5 antibody (DyLight 549)	Rb pAb	WB
GTX48585	ATG5 antibody (DyLight 649)	Rb pAb	ELISA, ICC/IF, IHC-P, WB
GTX48587	ATG5 antibody (HRP)	Rb pAb	ELISA
GTX48514	Atoh7 (zebrafish) antibody, Internal	Gi pAb	ELISA
GTX124597	Alp1a1a.4 antibody	Rb pAb	IHC-P, WB
GTX124374	Alp2a2a antibody	Rb pAb	IHC-P, WB, IHC-Wm
GTX124470	Alp5a1 antibody	Rb pAb	IHC-P, WB
GTX124386	Alp6v0d1 antibody	Rb pAb	IHC, WB
GTX125970	Alp6v0d1 antibody	Rb pAb	IHC
GTX129736	Alp6v1a1 antibody	Rb pAb	IHC-Wm, IHC-Wm
GTX125991	Alp6v1c1a+b antibody	Rb pAb	IHC-P
GTX129737	Alp6v1f antibody	Rb pAb	IHC-Wm, IHC-Wm
GTX127386	Alp6v1h antibody	Rb pAb	WB, IHC-Wm

B

Cat. No.	Product Name	Host & Clonality	Application
GTX127323	B2m antibody	Rb pAb	WB
GTX124388	Bactin1 antibody	Rb pAb	IHC-P, WB, IHC-Wm
GTX124400	Bactin1 antibody	Rb pAb	IHC-P, WB, IHC-Wm
GTX124500	Bactin1 antibody	Rb pAb	IHC-P, WB
GTX124501	Bactin1 antibody	Rb pAb	IHC-P, WB, IHC-Wm
GTX124395	Bbs7 antibody	Rb pAb	WB
GTX129651	beta Actin antibody	Rb pAb	IHC-Wm
GTX129652	beta Actin antibody	Rb pAb	IHC-Wm
GTX629630	beta Actin antibody [GT5512]	Ms mAb	ICC/IF, WB
GTX26302	beta Catenin antibody	Rb pAb	Dot, ICC/IF, IHC-Fr, WB
GTX15568	beta Tubulin antibody	Rb pAb	WB, Functional Assay, IHC-P, IP, WB
GTX48617	beta Tubulin antibody	Rb pAb	WB
GTX48618	beta Tubulin antibody (Biotin)	Rb pAb	IHC-P, WB
GTX48620	beta Tubulin antibody (DyLight 488)	Rb pAb	IHC, WB
GTX48622	beta Tubulin antibody (DyLight 549)	Rb pAb	IHC, WB
GTX48619	beta Tubulin antibody (DyLight 649)	Rb pAb	IHC-P
GTX48621	beta Tubulin antibody (HRP)	Rb pAb	IHC, WB
GTX124442	Bhmt antibody	Rb pAb	IHC-P, WB
GTX128200	Bmpr1a+b antibody	Rb pAb	IHC-Wm
GTX47005	BSDC1 antibody, N-term	Rb pAb	IHC, WB

C

Cat. No.	Product Name	Host & Clonality	Application
GTX45866	C3ORF10 antibody, Internal	Rb pAb	IHC, WB
GTX128854	Calm1a+1b+2a+2b+3a+3b antibody	Rb pAb	IHC-Wm
GTX128932	Camk2a antibody	Rb pAb	IHC-Wm
GTX124377	Camk2d2 antibody	Rb pAb	IHC-P, WB, IHC-Wm
GTX124408	Camk2d2 antibody	Rb pAb	IHC-P, WB, IHC-Wm
GTX128842	Camk2g1 + Camk2d2 antibody	Rb pAb	IHC-Wm
GTX124450	Capn1a antibody	Rb pAb	IHC-P, WB, IHC-Wm
GTX124327	Capza1a antibody	Rb pAb	IHC-P, WB, IHC-Wm
GTX124474	Capzb antibody	Rb pAb	WB
GTX42040	CASK antibody [S56A-50]	Ms mAb	IHC, IP, WB
GTX124357	Cat antibody	Rb pAb	IHC-P, WB
GTX124346	Cbsa antibody	Rb pAb	IHC-P, WB

C

Cat. No.	Product Name	Host & Clonality	Application
GTX124365	Cond1 antibody	Rb pAb	IHC-Fr, IHC-P, WB
GTX127326	Cct5 antibody	Rb pAb	IHC-Fr, IHC-P
GTX127327	Cct5 antibody	Rb pAb	IHC-Fr, IHC-P
GTX124298	Cct8 antibody	Rb pAb	WB
GTX124421	Cct8 antibody	Rb pAb	WB
GTX127394	Cdc73 antibody	Rb pAb	IHC-Wm
GTX125890	Cdh1 antibody	Rb pAb	IHC
GTX125885	Cdh2 antibody	Rb pAb	IHC, WB
GTX125962	Cdh2 antibody	Rb pAb	WB
GTX128927	Cdk2 antibody	Rb pAb	IHC-Wm
GTX128203	Cdk5 antibody	Rb pAb	IHC-Wm
GTX128852	Cdk5 antibody	Rb pAb	IHC-Wm
GTX124411	Cdk7 antibody	Rb pAb	WB, IHC-Wm
GTX124299	Celf1 antibody	Rb pAb	WB
GTX128209	Chd antibody	Rb pAb	IHC-Wm
GTX46601	CHIC1 antibody, N-term	Rb pAb	WB
GTX628143	Citrate synthetase antibody [GT1761]	Ms mAb	IHC-P, WB
GTX628144	Citrate synthetase antibody [GT2061]	Ms mAb	IHC-P, WB
GTX124468	Ckba antibody	Rb pAb	IHC-P, WB
GTX124469	Ckba antibody	Rb pAb	IHC-P, WB
GTX124405	Ckma antibody	Rb pAb	IHC, IHC-P, WB, IHC-Wm
GTX128090	Ckmt1 antibody	Rb pAb	IHC-Wm
GTX128934	Ckmt2a (Zgc:56085) antibody	Rb pAb	IHC-Wm
GTX14408	Clathrin Light chain antibody [3F133]	Ms mAb	ICC/IF, IHC-P, IP, WB
GTX14409	Clathrin Light chain antibody [3F133] (Functional Grade)	Ms mAb	ICC/IF, IHC-P, IP, WB
GTX17949	Clathrin Light chain antibody [SPM174] (ready-to-use)	Ms mAb	IHC-P
GTX124427	Clic4 antibody	Rb pAb	IHC-P, WB
GTX124368	Col1a1a antibody	Rb pAb	IHC-P, WB
GTX128242	Col1a1a antibody	Rb pAb	IHC-Wm
GTX128243	Col1a1a antibody	Rb pAb	IHC-Wm
GTX128202	Col1a2 antibody	Rb pAb	IHC-Wm
GTX127988	Col2a1a antibody	Rb pAb	IHC-Wm
GTX128000	commd7 antibody	Rb pAb	IHC-Wm
GTX48551	Connexin 43/GJA1 (phospho Ser368) antibody	Rb mAb	ELISA, WB
GTX10463	COPS3 antibody	Rb pAb	WB
GTX12321	COPS3 antibody	Rb pAb	IHC, WB
GTX12322	COPS4 antibody	Rb pAb	WB
GTX127395	Cops5 antibody	Rb pAb	WB, IHC-Wm
GTX124479	Cox4i1 antibody	Rb pAb	IHC-P, WB, IHC-Wm
GTX124480	Cox5aa antibody	Rb pAb	IHC-P, WB
GTX47190	CPEB2 antibody, Internal	Rb pAb	WB
GTX127402	Cpsf2 antibody	Rb pAb	IHC-Wm
GTX128006	Cpsf3 antibody	Rb pAb	IHC-Wm
GTX47303	CPSF3 antibody, N-term	Rb pAb	WB
GTX125882	Crabp2a antibody	Rb pAb	WB
GTX125986	Crabp2a antibody	Rb pAb	WB, IHC-Wm
GTX128928	Creb1a antibody	Rb pAb	IHC-Wm
GTX128425	Cs antibody	Rb pAb	WB
GTX124443	Cse1l antibody	Rb pAb	WB
GTX128241	Csnk1a1 antibody	Rb pAb	IHC-Wm
GTX124326	Csrp1a antibody	Rb pAb	IHC-P, WB, IHC-Wm
GTX47398	CSTF3 antibody, N-term	Rb pAb	WB
GTX127332	Ctbp2 antibody	Rb pAb	IHC-Fr, IHC-P
GTX127333	Ctbp2 antibody	Rb pAb	IHC-Fr, IHC-P
GTX124378	Ctnna antibody	Rb pAb	IHC-Fr, IHC-P, WB, IHC-Wm
GTX124382	Ctnna antibody	Rb pAb	IHC-P, WB
GTX124418	Ctnna antibody	Rb pAb	IHC-Fr, IHC-P, WB
GTX124481	Ctnnb1 antibody	Rb pAb	IHC, IHC-P, WB

Cat. No.	Product Name	Host & Clonality	Application
GTX124512	Ctnnb1 antibody	Rb pAb	IHC-P, WB
GTX128809	Ctps antibody	Rb pAb	IHC-Wm
GTX128324	Ctst1b antibody	Rb pAb	IHC-Wm
GTX128850	Cui4b antibody	Rb pAb	IHC-Wm
GTX48517	Cxr4b (zebrafish) antibody, Internal	Gt pAb	ELISA
GTX124387	Cyfp2 antibody	Rb pAb	IHC-P, WB
GTX128377	Cyp1a antibody	Rb pAb	WB
GTX127919	Cyp26b1 antibody	Rb pAb	IHC
GTX125985	Cyp26c1 antibody	Rb pAb	WB
GTX128080	Cyth1 antibody	Rb pAb	IHC-Wm
GTX128986	Cyth1a antibody	Rb pAb	IHC-Wm

D

Cat. No.	Product Name	Host & Clonality	Application
GTX47274	DAZAP1 antibody, C-term	Rb pAb	IHC, WB
GTX129001	Dcp2 antibody	Rb pAb	WB
GTX129734	Ddx18 antibody	Rb pAb	IHC-Wm
GTX128084	Ddx39a antibody	Rb pAb	IHC-Wm
GTX48577	DGAT1 antibody	Rb pAb	ICC/IF, WB
GTX48578	DGAT1 antibody (Biotin)	Rb pAb	WB
GTX48580	DGAT1 antibody (DyLight 488)	Rb pAb	WB
GTX48582	DGAT1 antibody (DyLight 549)	Rb pAb	ELISA, ICC/IF, IHC-P, WB
GTX48579	DGAT1 antibody (DyLight 649)	Rb pAb	ICC/IF, IHC, WB
GTX48581	DGAT1 antibody (HRP)	Rb pAb	ELISA, ICC/IF, IHC-P, WB
GTX124487	Dldh antibody	Rb pAb	WB
GTX124371	Dlst antibody	Rb pAb	IHC-P, WB
GTX128344	Dlx2a antibody	Rb pAb	IHC-Wm
GTX23736	DMAP1 antibody	Gt pAb	ChIP, WB
GTX23737	DMAP1 antibody	Gt pAb	WB
GTX124301	Dnaj2 antibody	Rb pAb	IHC-P, WB, IHC-Wm
GTX127393	Dnajb6b antibody	Rb pAb	IHC-Wm
GTX127993	dnajb9a antibody	Rb pAb	IHC-Wm
GTX127400	Dnajc7 antibody	Rb pAb	IHC-Wm
GTX127330	Dnm2 antibody	Rb pAb	IHC-Wm
GTX48548	Dnmt1 antibody [60B1220.1]	Ms mAb	ChIP, IHC-P, IP, WB
GTX129968	Dvl2 antibody	Rb pAb	IHC-Wm, IHC-P, WB
GTX129967	Dvl3 antibody	Rb pAb	IHC-Wm, IHC-P, WB
GTX48606	DYRK2 antibody	Rb pAb	IHC, WB

E

Cat. No.	Product Name	Host & Clonality	Application
GTX124452	Eef2b antibody	Rb pAb	IHC-P, WB
GTX124537	Ef1a antibody	Rb pAb	IHC-P, WB
GTX124538	Ef1a antibody	Rb pAb	WB, IHC-P, WB
GTX124433	Efna5b antibody	Rb pAb	IHC-P, WB
GTX11401	EGFR antibody [F4] (FITC)	Ms mAb	IHC-Fr
GTX124444	Egr2b antibody	Rb pAb	IHC-P, WB
GTX128131	Egr2b antibody	Rb pAb	WB
GTX124488	Eif2s1 antibody	Rb pAb	IHC-P, WB
GTX124364	Eif2s1l antibody	Rb pAb	IHC-P, WB
GTX124307	Eif4a1a antibody	Rb pAb	IHC-P, WB
GTX128929	Eif4a2 antibody	Rb pAb	IHC-Wm
GTX127383	Elavl1 antibody	Rb pAb	WB, IHC-Wm
GTX128365	Elavl3 antibody	Rb pAb	IHC-Wm
GTX124422	Elavl4 antibody	Rb pAb	IHC-P, WB, IHC-Wm
GTX124416	Elmo1 antibody	Rb pAb	WB
GTX129634	Emi2 antibody	Rb pAb	IHC-Wm
GTX128301	Eng2a antibody	Rb pAb	IHC-Wm
GTX124467	Eno1 antibody	Rb pAb	IHC-P, WB
GTX124345	Eno2 antibody	Rb pAb	IHC-P, WB

Cat. No.	Product Name	Host & Clonality	Application
GTX127392	Eno3 antibody	Rb pAb	WB, IHC-Wm
GTX124435	Epas1b antibody	Rb pAb	ChIP, IHC-P, WB
GTX48596	EPH receptor B2 antibody	Rb pAb	ELISA, IHC, WB
GTX48613	ERAB antibody	Gt pAb	IHC, WB
GTX124359	Erg antibody	Rb pAb	WB
GTX127382	Erh antibody	Rb pAb	IHC-Wm
GTX124325	Esd antibody	Rb pAb	IHC-P, WB
GTX128933	Esrrga antibody	Rb pAb	IHC-Wm
GTX128484	Etf1 antibody	Rb pAb	IHC
GTX124324	Etfb antibody	Rb pAb	IHC, IHC, WB
GTX128318	Eve1 antibody	Rb pAb	IHC
GTX128989	Ezrb antibody	Rb pAb	IHC-Wm

F

Cat. No.	Product Name	Host & Clonality	Application
GTX127287	Fabp7a antibody	Rb pAb	WB
GTX124339	Fbl antibody	Rb pAb	IHC-P, WB
GTX124466	Fbl antibody	Rb pAb	IHC-P, WB, IHC-Wm
GTX48627	FBX09 antibody	Rb pAb	WB
GTX46929	FBXO25 antibody, C-term	Rb pAb	IHC, WB
GTX128126	Fgfb8a antibody	Rb pAb	IHC-Wm
GTX124569	Fgfr1a antibody	Rb pAb	WB
GTX124333	Fhl2a antibody	Rb pAb	IHC-P, WB, IHC-Wm
GTX127370	Fli1a+b antibody	Rb pAb	WB
GTX127371	Fli1a+b antibody	Rb pAb	WB
GTX125996	Fmr1 antibody	Rb pAb	WB
GTX128273	Foxa2 antibody	Rb pAb	WB
GTX124341	Fsta antibody	Rb pAb	IHC-P, WB, IHC-Wm
GTX124335	Fxr1 antibody	Rb pAb	IHC-P, WB
GTX128926	Fyna antibody	Rb pAb	IHC-Wm
GTX128206	Fzr1 antibody	Rb pAb	IHC-Wm

G

Cat. No.	Product Name	Host & Clonality	Application
GTX48552	GABA A Receptor alpha 1 antibody	Rb pAb	WB
GTX48611	GABA A Receptor alpha 2 antibody	Rb pAb	WB
GTX124451	Gabarapa antibody	Rb pAb	IHC-P, WB
GTX128482	Gabarapl2 antibody	Rb pAb	IHC
GTX125728	Gabra1 antibody	Rb pAb	IHC-P, WB
GTX127388	Gabrb2 antibody	Rb pAb	WB, IHC-Wm
GTX124355	Gad1b antibody	Rb pAb	IHC-P, WB, IHC-Wm
GTX124460	Gad1b antibody	Rb pAb	IHC, WB, IHC-Wm
GTX124461	Gad1b antibody	Rb pAb	IHC-P, WB
GTX42541	gamma Catenin antibody [PG 5.1]	Ms mAb	ICC/IF, IHC-Fr, IP, WB
GTX113286	gamma Tubulin antibody	Rb pAb	ICC/IF, IHC-F, ICC/IF, WB
GTX48519	Gankyrin antibody	Rb pAb	WB
GTX124502	Gapdh antibody	Rb pAb	WB, IHC-P, WB
GTX124503	Gapdh antibody	Rb pAb	IHC-P, WB
GTX82899	GAPDH antibody	Rb pAb	WB, WB
GTX627408	GAPDH antibody [GT239]	Ms mAb	WB, ICC/IF, IHC-P
GTX627408-01	GAPDH antibody [GT239] (HRP)	Ms mAb	WB
GTX124296	Gapdhs antibody	Rb pAb	WB
GTX127279	Gata6 antibody	Rb pAb	WB, IHC-Wm
GTX124323	Gatm antibody	Rb pAb	WB
GTX27260	GFAPR40 antibody	Rb pAb	CC, ICC/IF, IHC-F, IHC-P, IP, WB
GTX124340	Gipc1 antibody	Rb pAb	WB
GTX128280	Gli2a antibody	Rb pAb	WB
GTX127334	Gira2 antibody	Rb pAb	IHC-Fr, IHC-P
GTX127335	Gira3 antibody	Rb pAb	IHC-Fr, IHC-P

Cat. No.	Product Name	Host & Clonality	Application
GTX127336	Gira4a antibody	Rb pAb	IHC-Fr, IHC-P
GTX124344	Glul antibody	Rb pAb	IHC-P, WB
GTX124403	Glul antibody	Rb pAb	IHC-P, WB
GTX124436	Gmps antibody	Rb pAb	IHC-P, WB
GTX128082	Gnai1 antibody	Rb pAb	IHC-Wm
GTX124322	Gnao1a antibody	Rb pAb	IHC-P, WB
GTX124321	Gnat1 antibody	Rb pAb	IHC-P, WB
GTX124622	Gnat1 antibody	Rb pAb	IHC-P, WB
GTX124712	Gnb1a antibody	Rb pAb	IHC-P, WB, IHC-Wm
GTX128811	Gnb2l1 antibody	Rb pAb	IHC-Wm
GTX124354	Gpia antibody	Rb pAb	IHC-Fr, IHC-P, WB
GTX89299	GPR94 / TRA1 antibody, Internal	Gt pAb	ELISA, IHC, WB
GTX124338	Gria2a antibody	Rb pAb	WB
GTX48633	GRP78 antibody	Rb pAb	WB
GTX48612	GSK3 (phospho Ser9) antibody	Rb pAb	IHC-P, WB
GTX48623	GSK3 beta antibody	Rb pAb	ELISA, ICC/IF, IHC-P, WB
GTX124384	Gspt1 antibody	Rb pAb	WB

H

Cat. No.	Product Name	Host & Clonality	Application
GTX128086	H2afz antibody	Rb pAb	IHC-Wm
GTX128087	H2afz antibody	Rb pAb	IHC-Wm
GTX128008	H3f3a antibody	Rb pAb	IHC-Wm
GTX48501	Hand2 (zebrafish) antibody, C-term	Gt pAb	ELISA
GTX124363	Hdac1 antibody	Rb pAb	WB
GTX124499	Hdac1 antibody	Rb pAb	IHC-P, WB, IHC-Wm
GTX124349	Hdac3 antibody	Rb pAb	IHC-P, WB, IHC-Wm
GTX48518	Her6 (zebrafish) antibody, N-term	Gt pAb	ELISA
GTX103707	HIF2 alpha antibody [N1N3]	Rb pAb	ChIP, WB, ICC/IF, IHC-P, WB
GTX127280	Hist2h2l antibody	Rb pAb	WB
GTX127342	Histone H2A.X (phospho Ser139) antibody	Rb pAb	IHC, IHC-P, IHC-Wm
GTX127343	Histone H2A.X antibody	Rb pAb	IHC-Wm
GTX40617	Histone H4 (acetyl) antibody	Rb pAb	ChIP, ELISA, ICC/IF, IP, WB
GTX124425	Hk1 antibody	Rb pAb	IHC-P, WB
GTX124375	Hk2 antibody	Rb pAb	WB
GTX124362	Hmgb1 antibody	Rb pAb	IHC-P, WB
GTX124486	Hmgb1 antibody	Rb pAb	IHC-P, WB
GTX124465	Hmpab antibody	Rb pAb	WB, IHC-Wm
GTX128322	Hoxb1b antibody	Rb pAb	IHC-Wm
GTX124489	Hprt1 antibody	Rb pAb	IHC-P, WB
GTX128923	Hsd17b10 antibody	Rb pAb	IHC-Wm
GTX124483	Hsp90ab1 antibody	Rb pAb	IHC-P, WB, IHC-Wm
GTX124541	Hsp90ab1 antibody	Rb pAb	WB, IHC-Wm
GTX124381	Hspa8 antibody	Rb pAb	IHC-P, WB
GTX124383	Hspa8 antibody	Rb pAb	IHC-P, WB
GTX124490	Hspa8 antibody	Rb pAb	IHC-P, WB
GTX124394	Hspd1 antibody	Rb pAb	WB

I

Cat. No.	Product Name	Host & Clonality	Application
GTX48657	Id1 antibody	Rb pAb	WB
GTX129644	Ide antibody	Rb pAb	IHC-Wm
GTX124320	Idh1 antibody	Rb pAb	WB
GTX124426	Idh1 antibody	Rb pAb	WB
GTX124319	Idh3a antibody	Rb pAb	IHC-P, WB
GTX124431	Idh3a antibody	Rb pAb	IHC-P, WB
GTX124318	Idh3b antibody	Rb pAb	WB

I

Cat. No.	Product Name	Host & Clonality	Application
GTX124410	Ilk antibody	Rb pAb	IHC-P, WB
GTX124472	Ilk antibody	Rb pAb	IHC, IHC-P, WB, IHC-Wm
GTX129970	Inhib antibody	Rb pAb	IHC-Wm, IHC-Wm
GTX127281	Insra+b antibody	Rb pAb	WB
GTX128490	Insulin antibody	Rb pAb	IHC-Wm
GTX128485	Irf6 antibody	Rb pAb	IHC
GTX77895	IRF8 antibody	Rb pAb	IHC, IHC-P, WB
GTX128201	Isl1 antibody	Rb pAb	IHC-Wm

K

Cat. No.	Product Name	Host & Clonality	Application
GTX124287	Katna1 antibody	Rb pAb	IHC-P, IHC-Wm
GTX47628	KCNAB2 antibody, C-term	Rb pAb	WB
GTX47447	KCNAB2 antibody, Internal	Rb pAb	IHC, WB
GTX47448	KCNAB2 antibody, Internal	Rb pAb	IHC, WB
GTX128204	Kcnh1 antibody	Rb pAb	IHC-Wm
GTX47624	KCNH5 antibody, Internal	Rb pAb	WB
GTX124498	Kras antibody	Rb pAb	WB
GTX127987	Krt15 antibody	Rb pAb	IHC-Wm
GTX128005	Krt15 antibody	Rb pAb	IHC-Wm
GTX128002	Krt18 antibody	Rb pAb	IHC-Wm
GTX124361	Krt8 antibody	Rb pAb	IHC-P, WB
GTX127997	Krt8 antibody	Rb pAb	IHC-Wm
GTX127999	Krt8 antibody	Rb pAb	IHC-Wm
GTX42030	Kv1.2 antibody [S14-16]	Ms mAb	IHC, IHC-Fr, IP, WB
GTX42031	KvBeta2 antibody [S17-70]	Ms mAb	IHC, IP, WB

L

Cat. No.	Product Name	Host & Clonality	Application
GTX48634	LC3 antibody	Rb pAb	IHC, WB
GTX124317	Lcp1 antibody	Rb pAb	IHC-P, WB
GTX124420	Lcp1 antibody	Rb pAb	IHC-P, WB
GTX127337	Lhx6 antibody	Rb pAb	IHC-Fr, IHC-P
GTX124290	Lin7a antibody	Rb pAb	IHC-P, WB, IHC-Wm
GTX124665	Lmo1 antibody	Rb pAb	IHC-P, WB
GTX48597	LMO2 antibody	Rb pAb	ELISA, ICC/IF, IHC-P, WB
GTX124412	LOC558552 antibody	Rb pAb	IHC-P, WB
GTX124376	Lox antibody	Rb pAb	IHC-P, WB
GTX48527	LOX antibody	Rb pAb	WB
GTX48528	LOX antibody (Biotin)	Rb pAb	WB
GTX48530	LOX antibody (DyLight 488)	Rb pAb	WB
GTX48532	LOX antibody (DyLight 549)	Rb pAb	WB
GTX48529	LOX antibody (DyLight 649)	Rb pAb	IHC-P
GTX48531	LOX antibody (HRP)	Rb pAb	WB
GTX128208	Lox1 antibody	Rb pAb	IHC-Wm
GTX128244	Lox3a antibody	Rb pAb	IHC-Wm

M

Cat. No.	Product Name	Host & Clonality	Application
GTX124286	Mab211 antibody	Rb pAb	IHC-P, WB, IHC-Wm
GTX124289	Mab211 antibody	Rb pAb	IHC-P, WB, IHC-Wm
GTX128295	Mafba antibody	Rb pAb	IHC-Wm
GTX127387	Mak antibody	Rb pAb	IHC-Wm
GTX127995	Map3k3 antibody	Rb pAb	IHC-Wm
GTX128483	Map3k7 antibody	Rb pAb	IHC
GTX124446	Mapk3 antibody	Rb pAb	IHC-P, WB

Cat. No.	Product Name	Host & Clonality	Application
GTX124447	Mapk3 antibody	Rb pAb	IHC-P, WB
GTX125115	Mapk3 antibody	Rb pAb	IHC-P, WB
GTX48600	MAT1/2A antibody	Rb pAb	IHC, WB
GTX48601	MAT1/2A antibody (Biotin)	Rb pAb	IHC, WB
GTX48603	MAT1/2A antibody (DyLight 488)	Rb pAb	IHC, WB
GTX48605	MAT1/2A antibody (DyLight 549)	Rb pAb	IHC, WB
GTX48602	MAT1/2A antibody (DyLight 649)	Rb pAb	IHC, WB
GTX48604	MAT1/2A antibody (HRP)	Rb pAb	IHC, WB
GTX124380	Mcm3 antibody	Rb pAb	WB
GTX124398	Mcm4 antibody	Rb pAb	IHC-P, WB
GTX128815	Met2cb antibody	Rb pAb	IHC-Wm
GTX129638	Meis1 antibody	Rb pAb	IHC-Wm
GTX128263	Mitfa antibody	Rb pAb	IHC-Wm
GTX128198	Mmp14a+b antibody	Rb pAb	IHC-Wm
GTX128207	Mmp14a+b antibody	Rb pAb	IHC-Wm
GTX128379	Mpx antibody	Rb pAb	IHC-Wm
GTX111661	MSH6 antibody [C1C2], Internal	Rb pAb	EMSA, EMSA, ICC/IF, IHC-P, WB
GTX42047	Mso maxi antibody [S6-60]	Ms mAb	IHC, IP, WB
GTX119163	MTMR12 antibody	Rb pAb	IHC (Frozen sections), IHC-P, WB
GTX128851	Mtmr2 antibody	Rb pAb	IHC-Wm
GTX124770	Mtor antibody	Rb pAb	IHC-P, WB
GTX124771	Mtor antibody	Rb pAb	IHC-P, WB
GTX48628	mTOR antibody	Rb pAb	WB
GTX128922	Myl12.2 antibody	Rb pAb	IHC-Wm
GTX128816	Myl2 antibody	Rb pAb	IHC (Frozen sections), IHC
GTX128848	Myl4 (Zgc:114164) antibody	Rb pAb	IHC-Wm
GTX128346	myl7 antibody	Rb pAb	WB, IHC-Wm
GTX128988	Myl7 antibody	Rb pAb	IHC-Wm
GTX128129	myod1 antibody	Rb pAb	IHC-Wm
GTX14584	MYST antibody	Rb pAb	ICC/IF, IP, WB

N

Cat. No.	Product Name	Host & Clonality	Application
GTX124297	Naa15b antibody	Rb pAb	WB
GTX124370	Nap11 antibody	Rb pAb	WB
GTX124288	Nat10 antibody	Rb pAb	IHC-P, WB, IHC-Wm
GTX125884	N-cadherin antibody	Rb pAb	WB
GTX127338	Ncs1a antibody	Rb pAb	IHC-Fr, IHC-P
GTX127339	Ncs1b antibody	Rb pAb	IHC-Fr, IHC-P
GTX124497	Ndrp1 antibody	Rb pAb	WB
GTX124454	Ndufv1 antibody	Rb pAb	IHC-P, WB
GTX13563	Neuro D1 antibody	Rb pAb	IHC-Fr, WB
GTX48502	Neurofibromin 2 (Zebrafish) antibody, Internal	Gt pAb	ELISA, IHC
GTX48503	Neurogenin 1 (zebrafish) antibody, Internal	Gt pAb	ELISA
GTX124285	Nfyba antibody	Rb pAb	IHC-P, WB, IHC-Wm
GTX128088	Nhp211 antibody	Rb pAb	IHC-Wm
GTX124392	Nlgn3a antibody	Rb pAb	WB
GTX124295	Nme2b.1 antibody	Rb pAb	IHC-P, WB, IHC-Wm
GTX124471	Nme2b.1 antibody	Rb pAb	IHC-P, WB
GTX124292	Nop58 antibody	Rb pAb	IHC-P, WB, IHC-Wm
GTX48504	Notch1a (zebrafish) antibody, Internal	Gt pAb	ELISA
GTX48505	Notch1b (zebrafish) antibody, Internal	Gt pAb	ELISA
GTX47395	NOVA2 antibody, N-term	Rb pAb	WB
GTX124309	Nr2c2 antibody	Rb pAb	IHC-P, WB
GTX129648	Nr2f1a antibody	Rb pAb	IHC-Wm
GTX46618	NRCAM antibody, N-term	Rb pAb	WB
GTX128132	Ntia antibody	Rb pAb	IHC-Wm
GTX47334	NUDT21 antibody, N-term	Rb pAb	IHC, WB

O

Cat. No.	Product Name	Host & Clonality	Application
GTX128089	Ogt.1 antibody	Rb pAb	IHC-Wm
GTX124332	Ob2 antibody	Rb pAb	IHC-Fr, IHC-P, WB

P

Cat. No.	Product Name	Host & Clonality	Application
GTX11432	p5 antibody	Rb pAb	WB
GTX128135	p53 antibody	Rb pAb	WB, IHC-Wm
GTX124316	Pa2g4a antibody	Rb pAb	IHC-P, WB
GTX128930	Pabpc1b antibody	Rb pAb	IHC-Wm
GTX128984	Pabpc4 antibody	Rb pAb	IHC-Wm
GTX48630	PACRG antibody	Rb pAb	WB
GTX128983	Paf1 antibody	Rb pAb	IHC-Wm
GTX42034	Pan-MAGUK antibody [S28-86]	Ms mAb	IHC, IP, WB
GTX46957	PANX2 antibody, N-term	Rb pAb	IHC, WB
GTX124393	Paps2a antibody	Rb pAb	WB
GTX48506	Patched 1 (zebrafish) antibody, Internal	Gt pAb	ELISA, ICC/IF
GTX128127	Pax2a antibody	Rb pAb	WB, IHC-Wm
GTX128843	Pax6a+b antibody	Rb pAb	IHC-Wm
GTX124423	Pbx1a antibody	Rb pAb	IHC-P, WB
GTX77897	PC4 antibody	Rb pAb	IHC-P, IRMA, WB
GTX128328	Pcdh8 antibody	Rb pAb	WB, IHC-Wm
GTX124496	Pcna antibody	Rb pAb	IHC-P, WB, IHC-Wm
GTX124432	Pdha1a antibody	Rb pAb	IHC-P, WB, IHC-Wm
GTX48520	PDK1 antibody	Rb pAb	WB
GTX124353	Phb antibody	Rb pAb	WB
GTX124491	Phb antibody	Rb pAb	IHC-P, WB
GTX124409	Plk3r3 antibody	Rb pAb	WB
GTX130085	PITX2 antibody	Rb pAb	WB
GTX124407	Pkm2a antibody	Rb pAb	IHC-P, WB, IHC-Wm
GTX48549	PLK1 antibody	Rb pAb	ChIP, IHC, IHC-P, IP, WB
GTX47072	PPAP2A antibody, Internal	Rb pAb	IHC, WB
GTX127384	Ppardb antibody	Rb pAb	IHC-Wm
GTX124424	Ppp1caa antibody	Rb pAb	IHC-P, WB
GTX128083	Ppp1cc antibody	Rb pAb	IHC-Wm
GTX124402	Ppp3r1b antibody	Rb pAb	IHC-P, WB
GTX127396	Ppp6c antibody	Rb pAb	WB, IHC-Wm
GTX129640	Prkacaa antibody	Rb pAb	IHC-Wm
GTX124445	Prkci antibody	Rb pAb	IHC-P, WB
GTX125515	Prkcz antibody	Rb pAb	WB
GTX125997	Prmt1 antibody	Rb pAb	WB
GTX128199	Prmt1 antibody	Rb pAb	IHC-Wm
GTX11437	Proteasome 20S Subunit alpha-5 antibody	Rb pAb	ICC/IF, WB
GTX128354	Prox1 antibody	Rb pAb	IHC-Wm
GTX124448	Prps1a antibody	Rb pAb	WB
GTX128081	Psma6a antibody	Rb pAb	IHC-Wm
GTX128210	Psmc3 antibody	Rb pAb	IHC-Wm
GTX48608	PSMD7 antibody	Rb pAb	IHC, WB
GTX129635	Ptena antibody	Rb pAb	IHC-Wm
GTX48598	PTENP1 antibody	Rb pAb	IHC, WB
GTX48515	Ptf1a (zebrafish) antibody, Internal	Gt pAb	ELISA
GTX89052	PTF1A / PFT1-P48 antibody, Internal	Gt pAb	ELISA, WB
GTX124495	Ptp4a3 antibody	Rb pAb	WB
GTX128924	Ptpn11a antibody	Rb pAb	IHC-Wm
GTX124458	Pul60a antibody	Rb pAb	IHC-P, WB, IHC-Wm
GTX124305	Pygb antibody	Rb pAb	IHC-P, WB, IHC-Wm
GTX124430	Pygb antibody	Rb pAb	IHC-P, WB
GTX124390	Pygma antibody	Rb pAb	IHC-P, WB

R

Cat. No.	Product Name	Host & Clonality	Application
GTX128847	Rab11a+Rab11b antibody	Rb pAb	IHC-Wm
GTX127328	Rab11b antibody	Rb pAb	IHC
GTX127329	Rab3ab antibody	Rb pAb	IHC
GTX129969	Rab5aa antibody	Rb pAb	IHC-Wm, IHC-Wm
GTX128205	Rac3a+b antibody	Rb pAb	IHC-Wm
GTX128003	Racgap1 antibody	Rb pAb	IHC-Wm
GTX124457	Ran antibody	Rb pAb	IHC-P, WB
GTX13521	RAP1A antibody	Rb pAb	WB
GTX124492	Raraa antibody	Rb pAb	IHC-P, WB
GTX124546	Rarga antibody	Rb pAb	WB
GTX129732	Rbb4 antibody	Rb pAb	IHC-Wm
GTX129733	Rbb4 antibody	Rb pAb	IHC-Wm
GTX128001	Rbm14b (Zgc:85696) antibody	Rb pAb	IHC-Wm
GTX47297	RBM38 antibody, N-term	Rb pAb	IHC, WB
GTX47422	RBMS3 antibody, N-term	Rb pAb	WB
GTX127399	Rcc2 antibody	Rb pAb	WB, IHC-Wm
GTX124415	Rdh10a antibody	Rb pAb	IHC-P, WB, IHC-Wm
GTX10510	RENT1 antibody	Gt pAb	WB
GTX10514	RENT1 antibody	Gt pAb	WB
GTX10534	RENT1 antibody	Gt pAb	WB
GTX128876	Rnf41 antibody	Rb pAb	IHC-Wm
GTX124315	Rorb antibody	Rb pAb	IHC-P, WB
GTX129636	Rpl11 antibody	Rb pAb	IHC-Wm
GTX124453	Rpl13a antibody	Rb pAb	IHC-P, WB
GTX124464	Rpl3 antibody	Rb pAb	IHC-P, WB, IHC-Wm
GTX124314	Rpl7a antibody	Rb pAb	IHC-P, WB
GTX127390	Rpl9 antibody	Rb pAb	WB, IHC-Wm
GTX127397	Rps10 antibody	Rb pAb	WB, IHC-Wm
GTX127391	Rps15 antibody	Rb pAb	IHC-Wm
GTX125183	Rps2 antibody	Rb pAb	WB
GTX127389	Rps3 antibody	Rb pAb	WB, IHC-Wm
GTX124922	Rps3a antibody	Rb pAb	IHC-P, WB
GTX124343	Rpsa antibody	Rb pAb	IHC-P, WB
GTX124494	Rpsa antibody	Rb pAb	IHC-P, WB
GTX129642	Rras2 antibody	Rb pAb	IHC-Wm
GTX46494	RRM1 antibody, N-term	Rb pAb	WB
GTX124385	Rrm2 antibody	Rb pAb	WB
GTX124441	Rrm2 antibody	Rb pAb	IHC-P, WB
GTX46969	RSAD2 antibody, C-term	Rb pAb	IHC, WB
GTX124342	Rxraa+b antibody	Rb pAb	WB

S

Cat. No.	Product Name	Host & Clonality	Application
GTX47043	SARDH antibody, Internal	Rb pAb	IHC, WB
GTX124293	Sbds antibody	Rb pAb	IHC-P, WB
GTX124473	Sdha antibody	Rb pAb	IHC-P, WB
GTX128085	Sec61a1 antibody	Rb pAb	IHC-Wm
GTX127403	Sec61g antibody	Rb pAb	IHC-Wm
GTX124475	Sept7b antibody	Rb pAb	WB
GTX124476	Sept7b antibody	Rb pAb	WB, IHC-Wm
GTX127998	Serpinf2 antibody	Rb pAb	IHC-Wm
GTX128853	Sfpq antibody	Rb pAb	IHC-Wm
GTX129645	Sfrp2 antibody	Rb pAb	IHC-Wm
GTX48599	SlAH1/2 antibody [8G7H12]	Ms mAb	IHC, WB
GTX48507	Six3b (zebrafish) antibody, Internal	Gt pAb	ELISA
GTX47343	SLBP antibody, Internal	Rb pAb	WB
GTX46779	SLC25A46 antibody, N-term	Rb pAb	WB
GTX48534	SLC31A1/CTR1 antibody	Rb pAb	IHC, ICC/IF, IHC, WB
GTX48535	SLC31A1/CTR1 antibody (Biotin)	Rb pAb	WB

S

Cat. No.	Product Name	Host & Clonality	Application
GTX48537	SLC31A1/CTR1 antibody (DyLight 488)	Rb pAb	ELISA, WB
GTX48539	SLC31A1/CTR1 antibody (DyLight 549)	Rb pAb	WB
GTX48536	SLC31A1/CTR1 antibody (DyLight 649)	Rb pAb	IHC-P, WB
GTX48538	SLC31A1/CTR1 antibody (HRP)	Rb pAb	IHC-P
GTX47006	SLC38A4 antibody, Internal	Rb pAb	IHC, WB
GTX46801	SLC7A14 antibody, N-term	Rb pAb	IHC, WB
GTX121941	SMAD1+5+8(9) antibody [C1C3-3]	Rb pAb	WB, WB
GTX48624	SMAD3 (phospho Ser423/425) antibody	Rb pAb	IHC, WB
GTX124559	Smad5 antibody	Rb pAb	WB, IHC-P, WB
GTX12165	SMARCA2 antibody	Rb pAb	ICC/IF, WB
GTX124337	Smarch1a antibody	Rb pAb	IHC-P, WB, IHC-Wm
GTX124417	Smarch1a+b antibody	Rb pAb	IHC-P, WB
GTX124304	Smardc1 antibody	Rb pAb	IHC-P, WB, IHC-Wm
GTX124313	Smardc1 antibody	Rb pAb	WB
GTX124312	Smardc1 antibody	Rb pAb	WB
GTX124399	Smc1a antibody	Rb pAb	IHC-P, WB
GTX124391	Smc3 antibody	Rb pAb	IHC-P, WB
GTX124397	Smc3 antibody	Rb pAb	IHC-P, WB, IHC-Wm
GTX89218	SMO antibody, Internal	Gt pAb	ELISA, WB
GTX25666	SNAP-25 antibody	Rb pAb	ICC/IF, WB
GTX128849	Snap25a antibody	Rb pAb	IHC-Wm
GTX12167	SNF5 antibody	Rb pAb	ICC/IF, WB
GTX128486	Snf8 antibody	Rb pAb	IHC-Wm
GTX127989	Snrpa antibody	Rb pAb	IHC-Wm
GTX128079	Snrpb antibody	Rb pAb	IHC-Wm
GTX47383	SNRPF antibody, N-term	Rb pAb	IHC, WB
GTX124294	Sod2 antibody	Rb pAb	IHC-P, WB, IHC-Wm
GTX124438	Sod2 antibody	Rb pAb	IHC-P, WB
GTX128374	Sox10 antibody	Rb pAb	IHC-Wm
GTX124477	Sox2 antibody	Rb pAb	IHC-Fr, WB
GTX627404	SOX2 antibody [GT1876]	Ms mAb	FACS, FACS, WB
GTX124478	Sox21b antibody	Rb pAb	IHC-P, WB
GTX48508	Sox9a (zebrafish) antibody, Internal	Gt pAb	ELISA
GTX128370	Sox9a antibody	Rb pAb	IHC-Wm
GTX48509	Sox9b (zebrafish) antibody, Internal	Gt pAb	ELISA
GTX128266	Spi1 antibody	Rb pAb	IHC-Wm
GTX100685	SQSTM1 antibody [N3C1], Internal	Rb pAb	ICC/IF, WB
GTX61220	Src antibody [EG107], C-term	Rb mAb	IHC, IHC-P, ICC/IF, IHC-P, WB
GTX46554	SSR2 antibody, N-term	Rb pAb	IHC, WB
GTX124419	Stam antibody	Rb pAb	IHC-P, WB
GTX13797	STAM antibody [29C678]	Ms mAb	WB
GTX128855	Sxbp1a antibody	Rb pAb	IHC-Wm
GTX124401	Sudc1 antibody	Rb pAb	IHC-P, WB
GTX124456	Sumo2 antibody	Rb pAb	WB
GTX124311	Supt5h antibody	Rb pAb	WB
GTX108391	Syntenin 1 antibody [N1], N-term	Rb pAb	ELISA, WB, ICC/IF, IHC-P, WB

T

Cat. No.	Product Name	Host & Clonality	Application
GTX125994	Tagln antibody	Rb pAb	WB
GTX124331	Tardbp antibody	Rb pAb	WB
GTX48590	TARDBP antibody	Rb pAb	ICC/IF, IHC-P, WB
GTX48591	TARDBP antibody (Biotin)	Rb pAb	IHC-P
GTX48593	TARDBP antibody (DyLight 488)	Rb pAb	IHC, WB
GTX48595	TARDBP antibody (DyLight 549)	Rb pAb	WB
GTX48592	TARDBP antibody (DyLight 649)	Rb pAb	WB
GTX48594	TARDBP antibody (HRP)	Rb pAb	WB
GTX48635	TAS1R2a antibody	Rb pAb	WB
GTX124336	Tbx5a antibody	Rb pAb	IHC-P, WB

Cat. No.	Product Name	Host & Clonality	Application
GTX48638	Tfap2a antibody, C-term	Gt pAb	ELISA
GTX124360	Th antibody	Rb pAb	WB
GTX125869	Thbs4b antibody	Rb pAb	WB, IHC-Wm
GTX125870	Thbs4b antibody	Rb pAb	WB, IHC-Wm
GTX129646	Thbs4b antibody	Rb pAb	IHC-Wm
GTX48510	Thra (zebrafish) antibody, C-term	Gt pAb	ELISA
GTX48511	Thrb (zebrafish) antibody, Internal	Gt pAb	ELISA
GTX128844	Thrb+Thraa antibody	Rb pAb	IHC-Wm
GTX48512	Timp2 (zebrafish) antibody, Internal	Gt pAb	ELISA
GTX48629	TIMP2 antibody [3A4]	Ms mAb	WB
GTX48513	Timp2L (zebrafish) antibody, Internal	Gt pAb	ELISA
GTX127990	Tik1a+b antibody	Rb pAb	IHC-Wm
GTX125409	Tin1 antibody	Rb pAb	IHC
GTX46659	TM9SF1 antibody, N-term	Rb pAb	IHC, WB
GTX127401	Tmed4 antibody	Rb pAb	WB, IHC-Wm
GTX128810	Tmed9 antibody	Rb pAb	IHC-Wm
GTX46298	TMEM30A antibody, N-term	Rb pAb	IHC, WB
GTX128197	Tnc antibody	Rb pAb	IHC-Wm
GTX127369	Tnnc1a antibody	Rb pAb	IHC-Wm
GTX47076	TNNI1 antibody, Internal	Rb pAb	WB
GTX48625	TORC1 antibody	Rb pAb	IHC, WB
GTX124660	Tp63 antibody	Rb pAb	IHC, WB, IHC-Wm
GTX125247	Tph2 antibody	Rb pAb	IHC-P, WB
GTX124310	Tpm4 antibody	Rb pAb	WB
GTX124434	Tpst1 antibody	Rb pAb	IHC-P, WB
GTX48542	TRAPP3 antibody	Rb pAb	IHC, WB
GTX48546	TRBP antibody	Rb pAb	WB
GTX124414	Trim55b antibody	Rb pAb	WB
GTX48555	Tryptophan hydroxylase 2 (phospho Ser19) antibody	Rb pAb	WB
GTX124493	Till1 antibody	Rb pAb	IHC-P, WB
GTX124406	Tuba1 antibody	Rb pAb	IHC, IHC-P, WB
GTX124964	Tuba1 antibody	Rb pAb	IHC-P, WB
GTX124965	Tuba1 antibody	Rb pAb	IHC-P, WB
GTX124303	Tuba1l antibody	Rb pAb	IHC-P, WB, IHC-Wm
GTX128805	Tuba1l antibody	Rb pAb	WB, IHC-Wm
GTX128806	Tuba1l antibody	Rb pAb	IHC-Wm
GTX128814	Tuba1l antibody	Rb pAb	WB, IHC-Wm
GTX124398	Tuba1l2 antibody	Rb pAb	IHC-P, WB
GTX124358	Tuba4l antibody	Rb pAb	IHC-P, WB
GTX124389	Tuba8l2 antibody	Rb pAb	IHC-P, WB
GTX124300	Tubb2c antibody	Rb pAb	IHC-P, WB
GTX124463	Tubb2c antibody	Rb pAb	IHC-P, WB, IHC-Wm
GTX124485	Tubb5 antibody	Rb pAb	IHC-P, WB, IHC-Wm
GTX124990	Tubb5 antibody	Rb pAb	WB
GTX129735	Tubb5 antibody	Rb pAb	IHC-Wm
GTX11320	TUBG1 antibody	Rb pAb	ICC/IF, WB
GTX124352	Tubg1 antibody	Rb pAb	IHC (Frozen sections), IHC, IHC-P, WB
GTX125050	Tubg1 antibody	Rb pAb	WB
GTX128845	Tyms antibody	Rb pAb	IHC-Wm

U

Cat. No.	Product Name	Host & Clonality	Application
GTX127385	U2af1 antibody	Rb pAb	IHC-Wm
GTX124308	Ube23a antibody	Rb pAb	IHC-P, WB
GTX13663	UBE2N antibody	Rb pAb	WB
GTX48626	Ube2N antibody	Gt pAb	IHC, WB
GTX129067	Uchl3 antibody	Rb pAb	WB
GTX124372	Ubp1 antibody	Rb pAb	WB

V

Cat. No.	Product Name	Host & Clonality	Application
GTX48550	VANGL2 antibody, Internal	Gl pAb	ELISA, WB
GTX128306	Vasa antibody	Rb pAb	WB, IHC-Wm
GTX124821	Vcp antibody	Rb pAb	IHC-P, WB
GTX128925	Vcp antibody	Rb pAb	IHC-Wm
GTX48545	VDAC2/3 antibody	Rb pAb	WB
GTX128356	Vegfaa antibody	Rb pAb	IHC-Wm
GTX127331	Vmhc antibody	Rb pAb	IHC-Wm

W

Cat. No.	Product Name	Host & Clonality	Application
GTX105679	WNT3 antibody	Rb pAb	WB, IHC-P, WB

X

Cat. No.	Product Name	Host & Clonality	Application
GTX14762	XTP4 antibody	Rb pAb	ELISA, WB

Y

Cat. No.	Product Name	Host & Clonality	Application
GTX124350	Ywhabb antibody	Rb pAb	IHC-P, WB, IHC-Wm
GTX124351	Ywhabb antibody	Rb pAb	IHC-P, WB, IHC-Wm
GTX124404	Ywhae1 antibody	Rb pAb	WB
GTX128846	Ywhag1 antibody	Rb pAb	IHC-Wm
GTX124373	Ywhaqa antibody	Rb pAb	WB
GTX124455	Ywhaqa antibody	Rb pAb	WB

Z

Cat. No.	Product Name	Host & Clonality	Application
GTX46727	ZFYVE27 antibody, C-term	Rb pAb	WB
GTX128812	Zgc:136929 antibody	Rb pAb	IHC-Wm
GTX129643	zgc:136929 antibody	Rb pAb	IHC-Wm
GTX129647	zgc:174006 antibody	Rb pAb	IHC-Wm
GTX125224	Zgc:55461 antibody	Rb pAb	IHC-P, WB
GTX125229	Zgc:55461 antibody	Rb pAb	WB
GTX128982	Zgc:86709 antibody	Rb pAb	IHC-Wm
GTX48521	ZMPSTE24 antibody	Rb pAb	IHC, WB
GTX48522	ZMPSTE24 antibody (Biotin)	Rb pAb	IHC-P, WB
GTX48524	ZMPSTE24 antibody (DyLight 488)	Rb pAb	WB
GTX48526	ZMPSTE24 antibody (DyLight 549)	Rb pAb	WB
GTX48523	ZMPSTE24 antibody (DyLight 649)	Rb pAb	IHC-P
GTX48525	ZMPSTE24 antibody (HRP)	Rb pAb	IHC, WB
GTX129068	Zran1b antibody	Rb pAb	WB



There's a zAb for that
www.genetex.com/zebrafish



International

Tel 886.3.6208988
Fax 886.3.6209098
E-mail international@genetex.com

USA

Tel 1.949.553.1900
Fax 1.949.309.2888
Toll-free 1.877.436.3839
E-mail info@genetex.com



www.genetex.com



[zebrafish](#)