

Zebrafish marker antibody list

Antibodies

Quality Antibodies
Quality Results

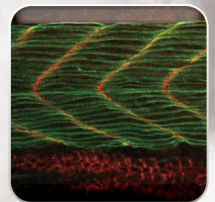
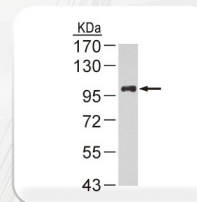
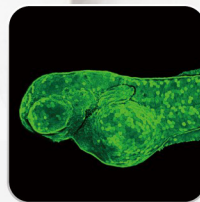
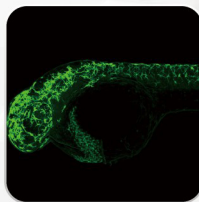
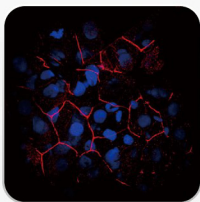
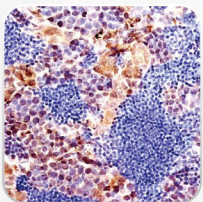


Table of content

1. GTX129638 Meis1 antibody (myeloid ecotropic viral integration 1).....	P2
2. GTX128854 Calm1a+1b+2a+2b+3a+3b antibody (calmodulin).....	P3
3. GTX128127 Pax2a antibody (paired box gene 2a).....	P4
4. GTX128843 Pax6a+b antibody.....	P5
5. GTX124422 Elavl4 antibody ((embryonic lethal, abnormal vision, Drosophila)-like 4 (Hu antigen D)).....	P6
6. GTX128201 Isl1 antibody (islet1).....	P8
7. GTX128805 Tuba1l antibody (tubulin, alpha 1, like).....	P9
8. GTX128806 Tuba1l antibody (tubulin, alpha 1, like).....	P11
9. GTX128814 Tuba1l antibody (tubulin, alpha 1, like).....	P12
10. GTX128129 myod1 antibody (myogenic differentiation 1).....	P13
11. GTX128328 Pcdh8 antibody (protocadherin 8).....	P14
12. GTX124366 Acta2 antibody (actin, alpha 2, smooth muscle, aorta).....	P15
13. GTX128981 Acta2 antibody (actin, alpha 2, smooth muscle, aorta).....	P17
14. GTX128988 Myl7 antibody (myosin, light polypeptide 7, regulatory).....	P18
15. GTX127331 Vmhc antibody (ventricular myosin heavy chain).....	P19
16. GTX124440 Actn3a antibody (actinin alpha 3a).....	P20
17. GTX124479 Cox4i1 antibody (cytochrome c oxidase subunit IV isoform 1)	P21
18. GTX124477 Sox2 antibody (SRY-box containing gene 2).....	P23
19. GTX124302 Aldh1a2 antibody (aldehyde dehydrogenase 1 family, member A2).....	P24
20. GTX128935 Aldh1a2 antibody (aldehyde dehydrogenase 1 family, member A2).....	P25
21. GTX124660 Tp63 antibody.....	P26
22. GTX127342 Histone H2A.X (phospho Ser139) antibody.....	P28
23. GTX124420 Lcp1 antibody (lymphocyte cytosolic plastin 1).....	P29
24. GTX128851 Mtmr2 antibody.....	P30
25. GTX125890 Cdh1 antibody (cadherin 1).....	P31
26. GTX124481 Ctnnb1 antibody (catenin beta-1).....	P32
27. GTX124512 Ctnnb1 antibody (catenin beta-1).....	P34
28. GTX128840 Acvr2b antibody (activin receptor IIb).....	P35
29. GTX124496 PcnA antibody (proliferating cell nuclear antigen).....	P36
30. GTX128135 p53 antibody.....	P38

Cat. No.: GTX129638

Product name: Meis1 antibody (myeloid ecotropic viral integration 1)

Marker : Neural progenitor marker

Target: Meis1

Reactivity: zebrafish

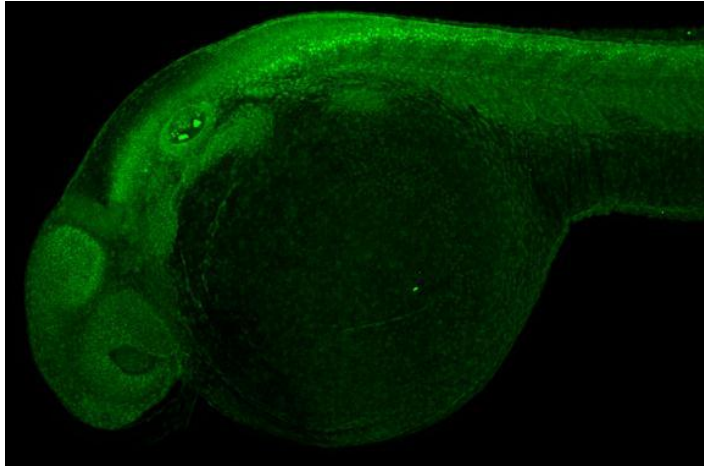
Tissue tested: whole-mount zebrafish embryos

Application: IHC-Wm

Location:

Application note:

IHC-Wm: 1:100-1:500



Meis1 antibody detects Meis1 protein at nucleus of CNS on whole-mount zebrafish embryos by immunohistochemical analysis. Sample: Meis1 antibody (GTX129638) dilution: 1:200.

Cat. No.: GTX128854

Product name: Calm1a+1b+2a+2b+3a+3b antibody (calmodulin)

Marker : spinal cord neuron

Target: Calm 1a+1b+2a+2b+3a+3b

Tissue tested: whole-mount zebrafish embryo

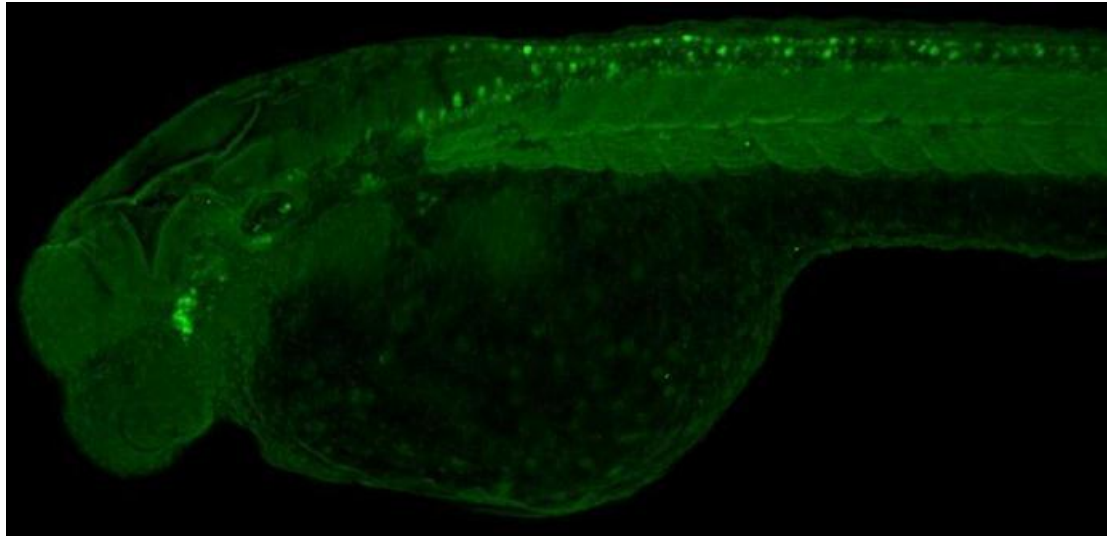
Location:

Reactivity: zebrafish

Application: IHC-Wm

Application note:

IHC-Wm: 1:100-1:500



Calm1a+1b+2a+2b+3a+3b antibody detects Calm1a+1b+2a+2b+3a+3b protein at spinal cord neurons on whole-mount zebrafish embryos by immunohistochemical analysis. Sample: Calm1a+1b+2a+2b+3a+3b antibody (GTX128854) dilution: 1:200.

Cat. No.: GTX128127

Product name: Pax2a antibody (paired box gene 2a)

Marker : Epibranchial placode (neurons) and pronephric marker

Target: Pax2a

Reactivity: zebrafish

Tissue tested: whole-mount zebrafish embryos, 36 hpf
zebrafish lysate/extract

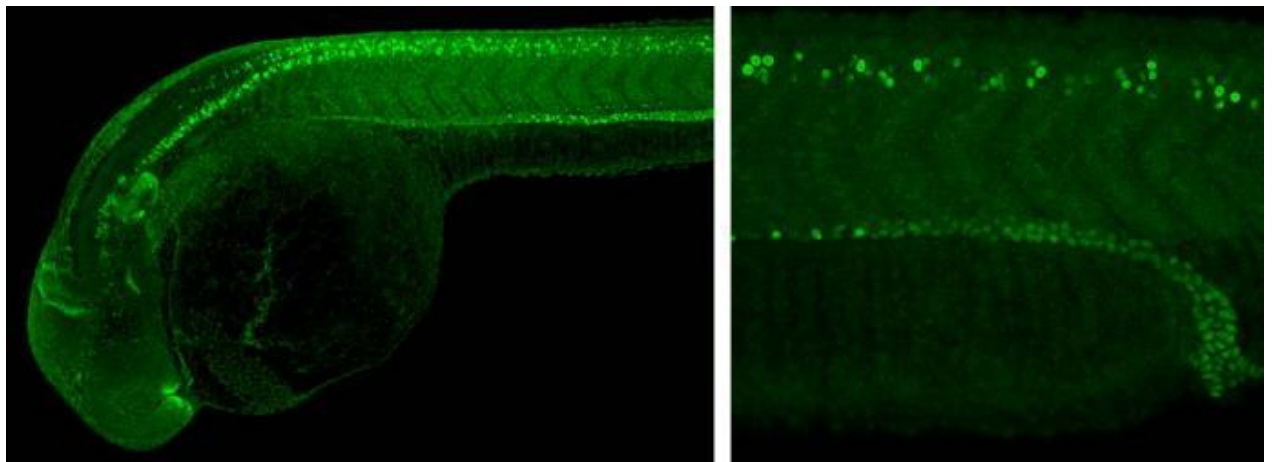
Application: WB, IHC-Wm

Location:

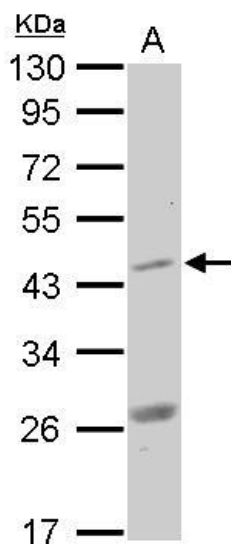
Application note:

WB: 1:500-1:3000

IHC-Wm:



pax2a antibody detects pax2a protein at Pronephric duct and neurons on whole-mount zebrafish embryos by immunohistochemical analysis. Sample: pax2a antibody (GTX128127) dilution: 1:200.



Pax2a antibody detects pax2a protein by Western blot analysis.

A. 20 µg 36 hpf zebrafish lysate/extract

10 % SDS-PAGE

Cat. No.: GTX128843

Product name: Pax6a+b antibody

Marker : Neuron marker

Target: Pax6a+b

Tissue tested: whole-mount zebrafish embryos

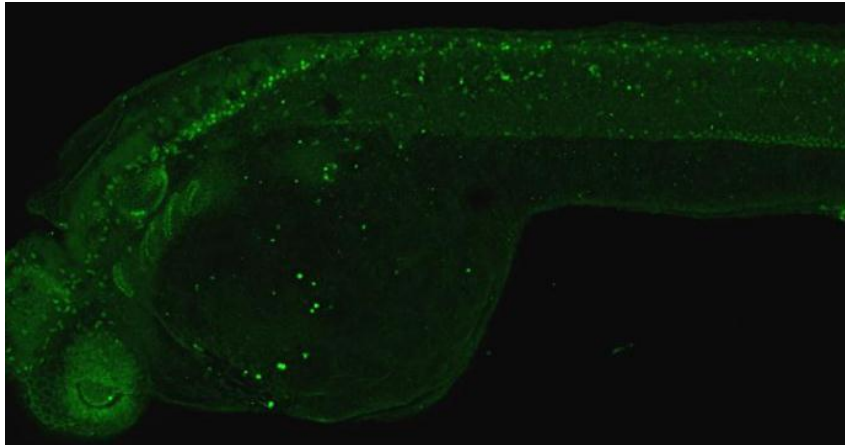
Location:

Reactivity: zebrafish

Application: IHC-Wm

Application note:

IHC-Wm: 1:100-1:500



Pax6a+b antibody detects Pax6a+b protein at nucleus of CNS on whole-mount zebrafish embryos by immunohistochemical analysis. Sample: Pax6a+b antibody (GTX128843) dilution: 1:200.

Cat. No.: GTX124422

Product name: Elavl4 antibody ((embryonic lethal, abnormal vision, Drosophila)-like 4 (Hu antigen D))

Marker : Neuron marker

Target: elavl4

Tissue tested: zebrafish tissue, whole-mount zebrafish embryo, zebrafish brain

Location:

Reactivity: zebrafish

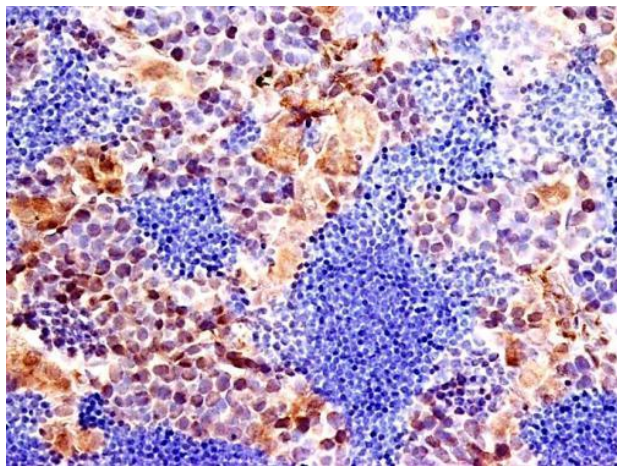
Application: IHC-P, WB, IHC-Wm

Application note:

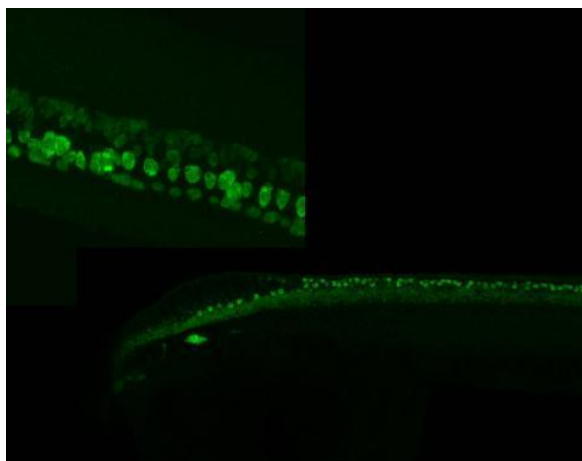
IHC-P: 1:100-1:1000

WB: 1:500-1:3000

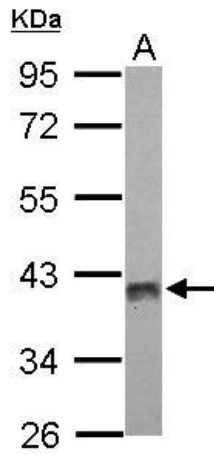
IHC-Wm: 1:100-1:500



Immunohistochemical analysis of paraffin-embedded zebrafish tissue, using elavl4 (GTX124422) antibody at 1:300 dilution.



Elavl4 antibody detects Elavl4 protein on Rohon-Beard neurons by immunohistochemical analysis. Sample: Whole-mount zebrafish embryo. Elavl4 antibody (GTX124422) dilution: 1:200.



Sample (30 ug of whole cell lysate)

A: zebrafish brain

10% SDS PAGE

Cat. No.: GTX128201

Product name: Isl1 antibody (islet1)

Marker : Neuron marker

Target: isl1

Tissue tested: whole-mount zebrafish embryo

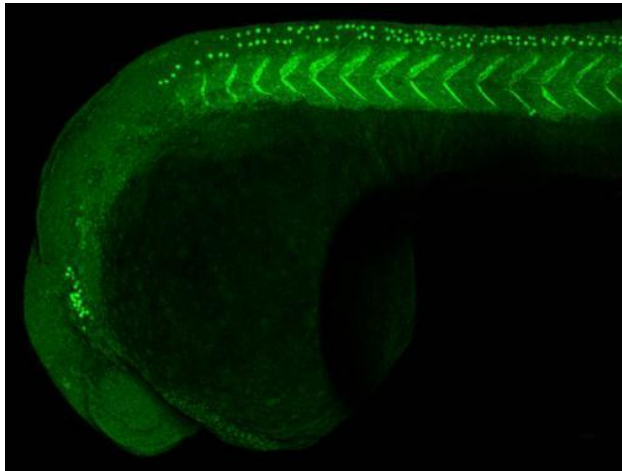
Location: Nucleus

Reactivity: zebrafish

Application: IHC-Wm

Application note:

IHC-Wm: 1:100-1:500



Immunohistochemical analysis (whole mount) of zebrafish embryo, using islet1(GTX128201) antibody at 1:200 dilution antibody at 1:200 dilution.

Cat. No.: GTX128805

Product name: Tuba1l antibody (tubulin, alpha 1, like)

Marker : Motor axon marker

Target: tuba1l

Reactivity: zebrafish

Tissue tested: zebrafish muscle, whole-mount
zebrafish embryo,

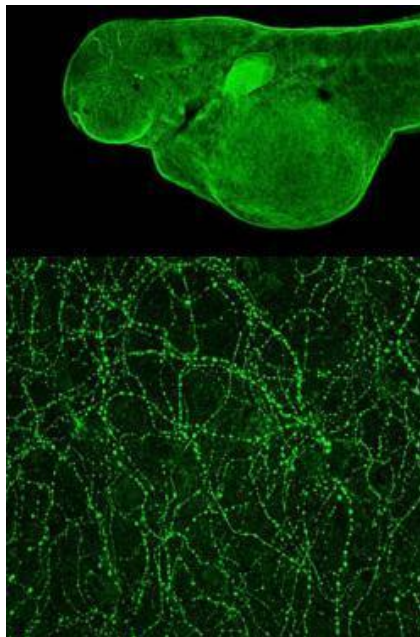
Application: WB, IHC-Wm

Location:

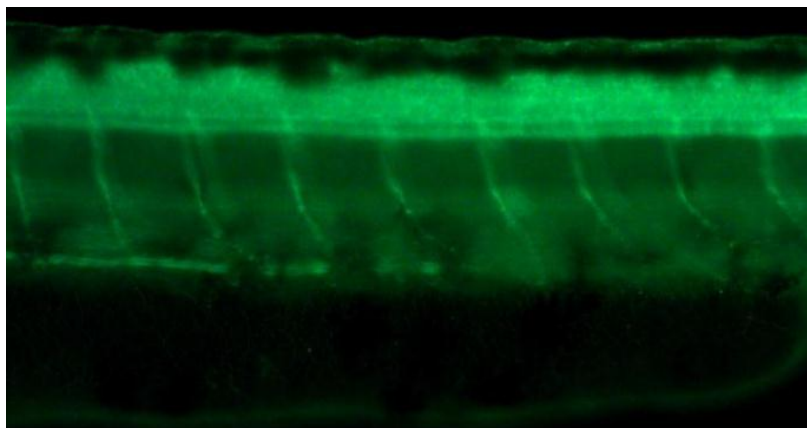
Application note:

WB: 1:500-1:3000

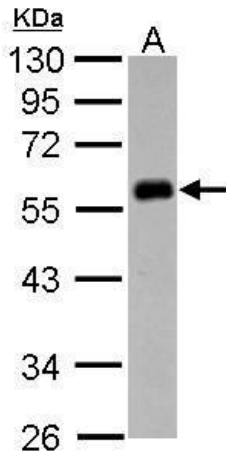
IHC-Wm: 1:100-1:500



Immunohistochemical analysis (whole mount) of zebrafish embryo, using Tuba1l (GTX128805) antibody at 1:200 dilution.



Tuba1l antibody detects Tuba1l protein at axons on whole-mount zebrafish embryos by immunohistochemical analysis. Sample: Tuba1l antibody (GTX128805) dilution: 1:200.



Sample (30 ug of whole cell lysate)

A: zebrafish muscle

10% SDS PAGE

Cat. No.: GTX128806

Product name: Tuba1l antibody (tubulin, alpha 1, like)

Marker : Motor axon marker

Target: tuba1l

Tissue tested: whole-mount zebrafish embryo,

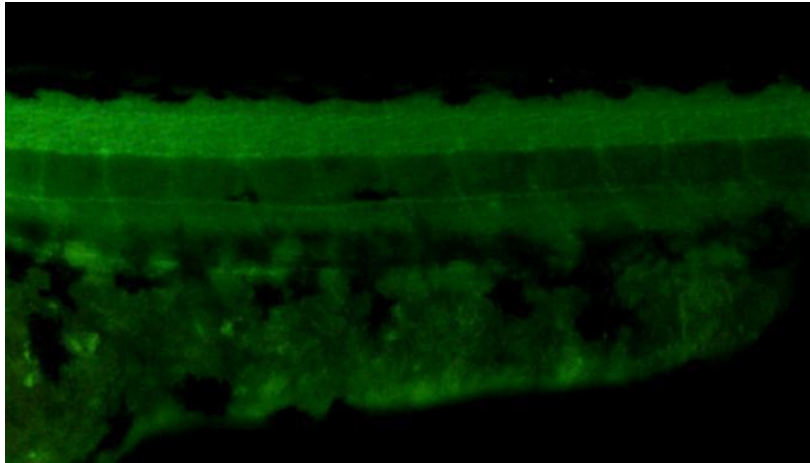
Location:

Reactivity: zebrafish

Application: IHC-Wm

Application note:

IHC-Wm: 1:100-1:500



Tuba1l antibody detects Tuba1l protein at axons on whole-mount zebrafish embryos by immunohistochemical analysis. Sample: Tuba1l antibody (GTX128806) dilution: 1:200.

Cat. No.: GTX128814

Product name: Tuba1l antibody (tubulin, alpha 1, like)

Marker : Motor axon marker

Target: tuba1l

Reactivity: zebrafish

Tissue tested: whole-mount zebrafish embryo,
Adult zebrafish

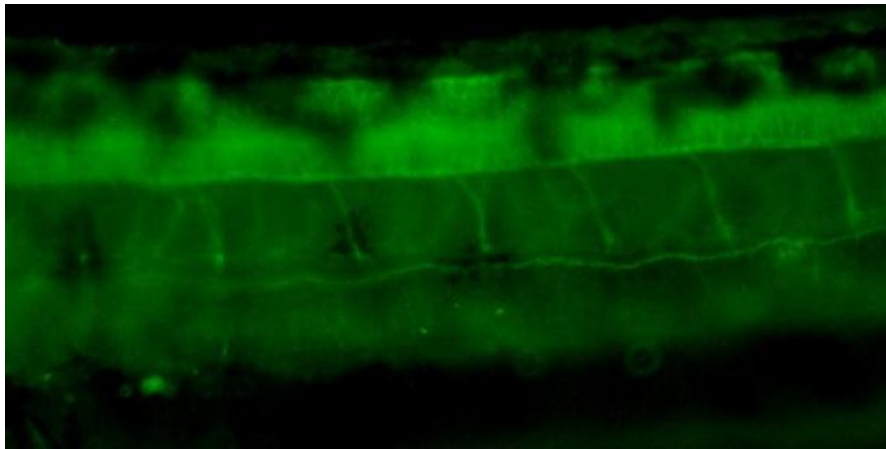
Application: WB, IHC-Wm

Location:

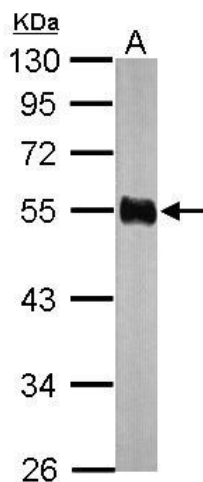
Application note:

WB: 1:500-1:3000

IHC-Wm: 1:100-1:500



Tuba1l antibody detects Tuba1l protein at axons on whole-mount zebrafish embryos by immunohistochemical analysis. Sample: Tuba1l antibody (GTX128814) dilution: 1:200.



Sample (10 ug of whole cell lysate)

A: Adult zebrafish

10% SDS PAGE

GTX128814 diluted at 1:1000



There's a zAb for that

Cat. No.: GTX128129

Product name: myod1 antibody (myogenic differentiation 1)

Marker : Somite border marker

Target: myod1

Tissue tested: whole-mount zebrafish embryo

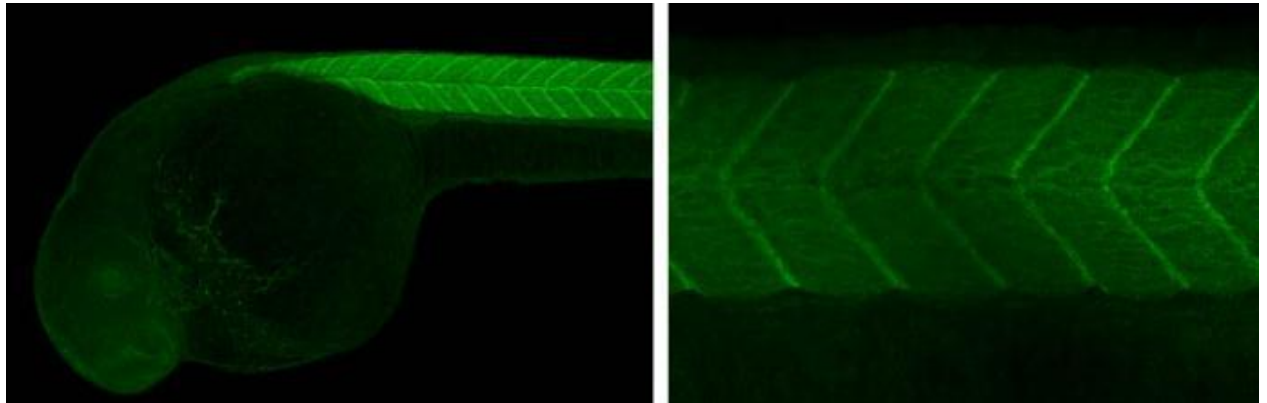
Location:

Reactivity: zebrafish

Application: IHC-Wm

Application note:

IHC-Wm: 1:100-1:500



myod1 antibody detects myod1 protein at Somites on whole-mount zebrafish embryos by immunohistochemical analysis. Sample: myod1 antibody (GTX128129) dilution: 1:200.

Cat. No.: GTX128328

Product name: Pcdh8 antibody (protocadherin 8)

Marker : Somite border marker

Target: Pcdh8

Tissue tested: whole-mount zebrafish embryo, zebrafish brain lysate/extract

Location:

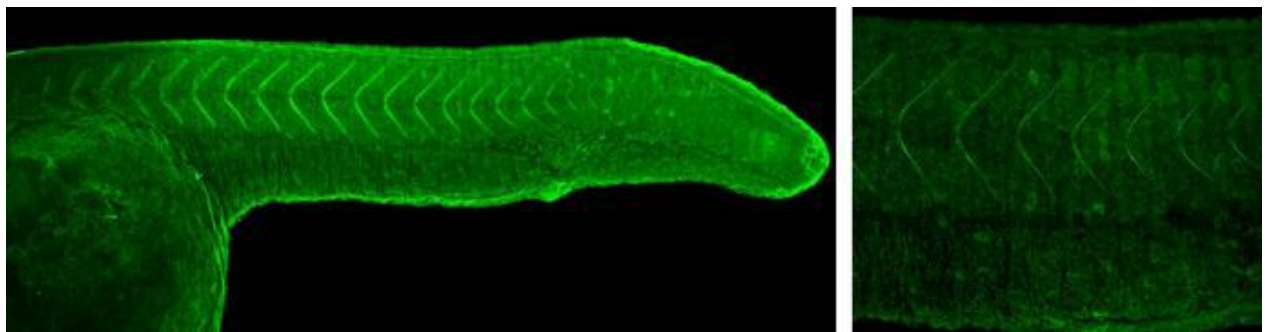
Reactivity: zebrafish

Application: WB, IHC-Wm

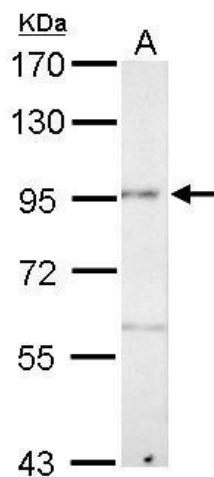
Application note:

WB: 1:500-1:3000

IHC-Wm:



pcdh8 antibody detects pcdh8 protein at somites on whole-mount zebrafish embryos by immunohistochemical analysis. Sample: pcdh8 antibody (GTX128328) dilution: 1:200.



Pcdh8 antibody detects pcdh8 protein by Western blot analysis.

A. 30 µg zebrafish brain lysate/extract

7.5 % SDS-PAGE

Pcdh8 antibody (GTX128328) dilution: 1:1000

Cat. No.: GTX124366

Product name: Acta2 antibody (actin, alpha 2, smooth muscle, aorta)

Marker : Muscle (smooth) marker

Target: Acta2

Tissue tested: zebrafish tissue , whole-mount
zebrafish embryo, Adult zebrafish

Location:

Reactivity: zebrafish

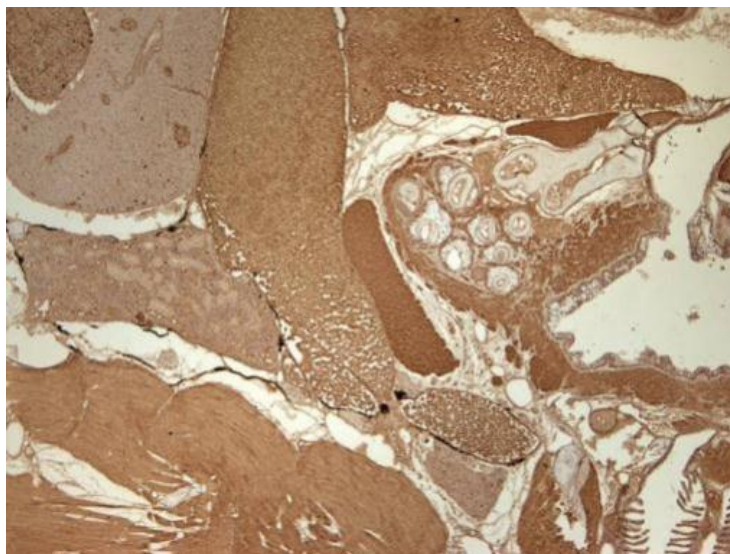
Application: IHC-P, WB, IHC-Wm

Application note:

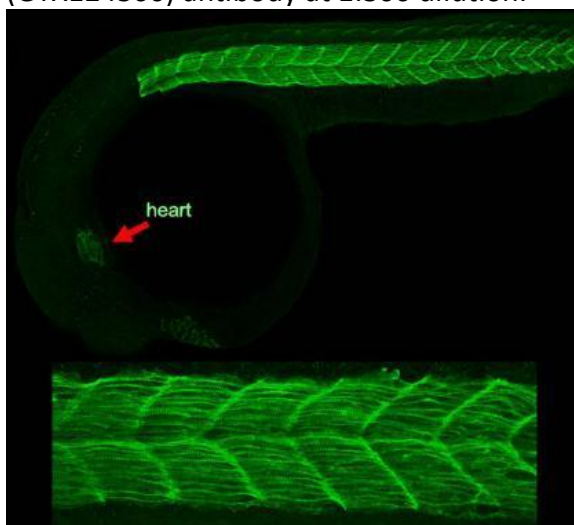
IHC-P: 1:100-1:1000

WB: 1:500-1:3000

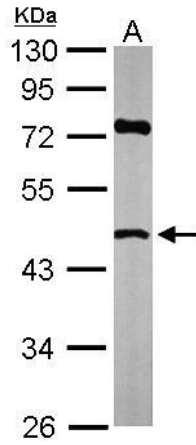
IHC-Wm: 1:100-1:500:



Immunohistochemical analysis of paraffin-embedded zebrafish tissue, using acta2 (GTX124366) antibody at 1:300 dilution.



Immunohistochemical analysis (whole mount) of zebrafish embryo, using acta2(GTX124366) antibody at 1:200 dilution.



Sample (10 ug of whole cell lysate)

A: Adult zebrafish

10% SDS PAGE

GTX124366 diluted at 1:1000

Cat. No.: GTX128981

Product name: Acta2 antibody (actin, alpha 2, smooth muscle, aorta)

Marker : Muscle (smooth) marker

Target: Acta2

Tissue tested: whole-mount zebrafish embryo

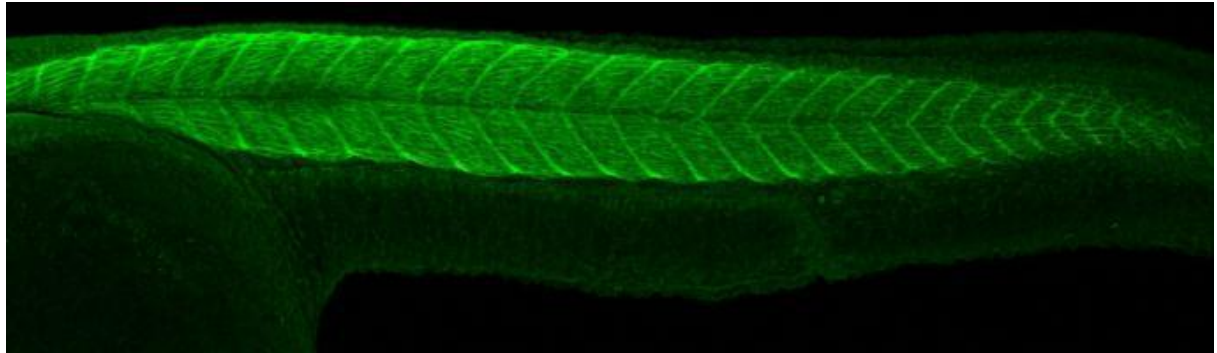
Location:

Reactivity: zebrafish

Application: IHC-Wm

Application note:

IHC-Wm: 1:100-1:500



Acta2 antibody detects Acta2 protein at muscles on whole-mount zebrafish embryos by immunohistochemical analysis. Sample: Acta2 antibody (GTX128981) dilution: 1:200.

Cat. No.: GTX128988

Product name: Myl7 antibody (myosin, light polypeptide 7, regulatory)

Marker : Heart and muscle marker

Target: Myl7

Tissue tested: whole-mount zebrafish embryo

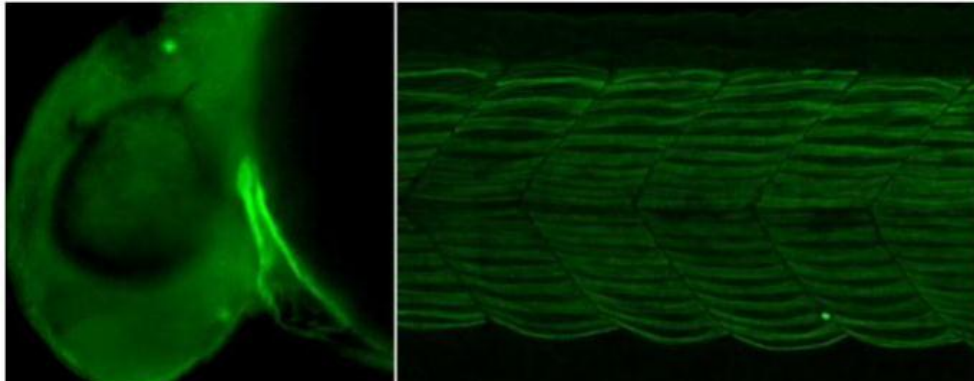
Location:

Reactivity: zebrafish

Application: IHC-Wm

Application note:

IHC-Wm: 1:100-1:500



Myl7 antibody detects Myl7 protein at cardiac and skeletal muscles on whole-mount zebrafish embryos by immunohistochemical analysis. Sample: Myl7 antibody (GTX128988) dilution: 1:200.

Cat. No.: GTX127331

Product name: Vmhc antibody (ventricular myosin heavy chain)

Marker : heart, muscle/ventricular specific

Target: vmhc

Tissue tested: whole-mount zebrafish embryo

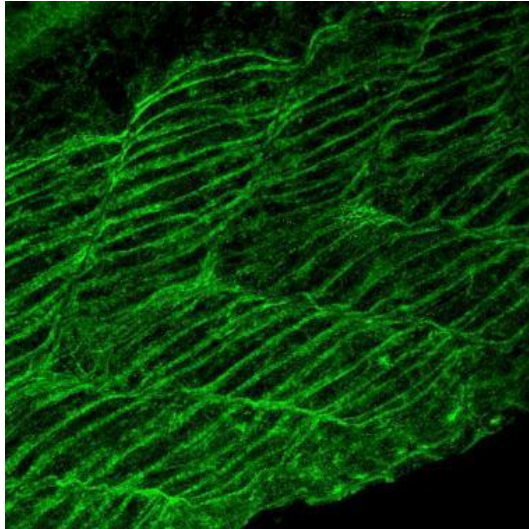
Location:

Reactivity: zebrafish

Application: IHC-Wm

Application note:

IHC-Wm: 1:100-1:500



Immunohistochemical analysis of zebrafish wholemount embryos, 24 hpf, using vmhc (GTX127331) antibody at 1:100 dilution

Cat. No.: GTX124440

Product name: Actn3a antibody (actinin alpha 3a)

Marker : Muscle (z line) marker

Target: Actn3a

Reactivity: zebrafish

Tissue tested: whole-mount zebrafish embryo,
whole zebrafish

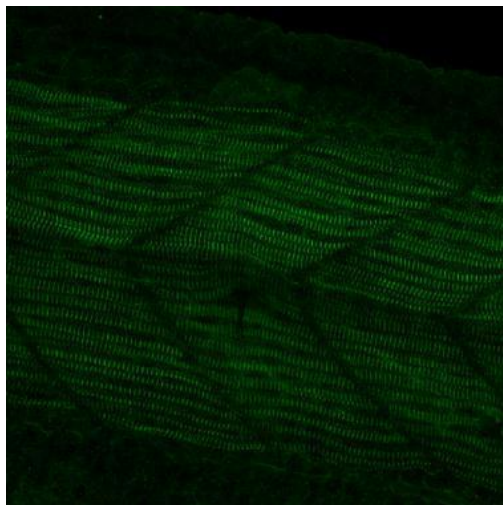
Application: WB, IHC-Wm

Location:

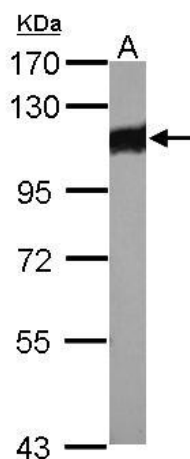
Application note:

WB: 1:500-1:3000

IHC-Wm:



Actn3a antibody detects Actn3a protein at muscle Z-lines on whole-mount zebrafish embryos by immunohistochemical analysis. Sample: Actn3a antibody (GTX124440) dilution: 1:200.



Sample (30 ug of whole cell lysate)

A: whole zebrafish

7.5% SDS PAGE

GTX124440 diluted at 1:1000



There's a zAb for that

Cat. No.: GTX124479

Product name: Cox4i1 antibody (cytochrome c oxidase subunit IV isoform 1)

Marker : Mitochondria marker

Target: Cox4i1

Reactivity: zebrafish

Tissue tested: zebrafish tissue , whole-mount
zebrafish embryo, Adult zebrafish

Application: IHC-P, WB, IHC-Wm

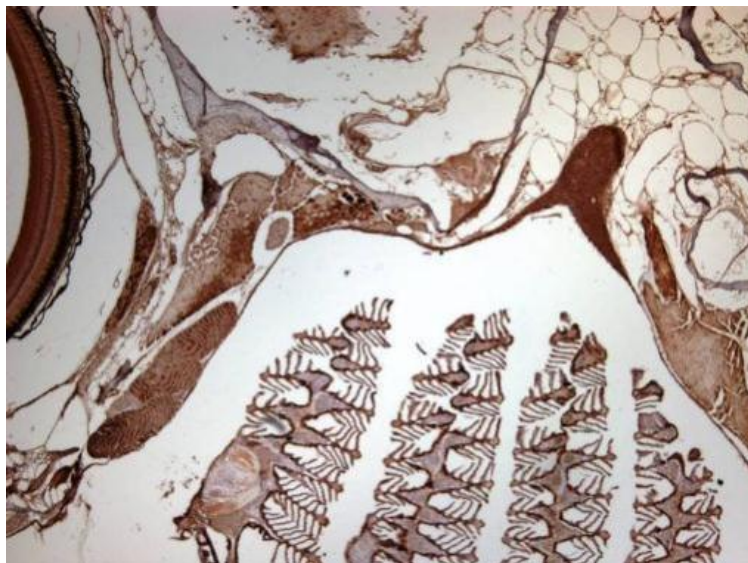
Location:

Application note:

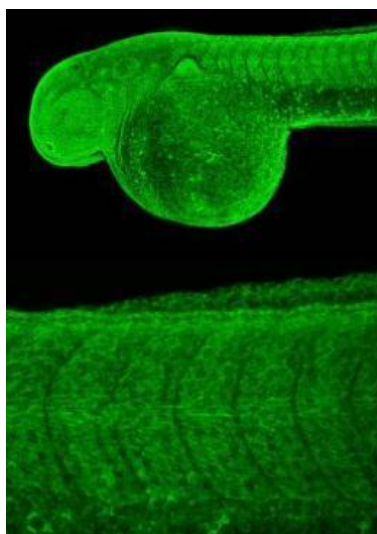
IHC-P: 1:100-1:1000

WB: 1:500-1:3000

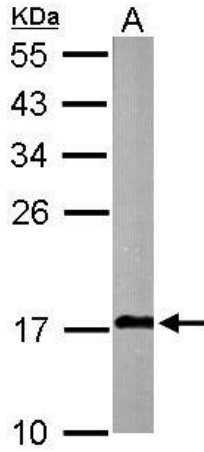
IHC-Wm: 1:100-1:500:



Immunohistochemical analysis of paraffin-embedded zebrafish tissue, using cox4i1 (GTX124479) antibody at 1:300 dilution.



Immunohistochemical analysis (whole mount) of zebrafish embryo, using cox4i1(GTX124479) antibody at 1:200 dilution.



Sample (10 ug of whole cell lysate)

A: Adult zebrafish

12% SDS PAGE

GTX124479 diluted at 1:1000

Cat. No.: GTX124477

Product name: Sox2 antibody (SRY-box containing gene 2)

Marker : Retina/neural progenitor cell

Target: sox2

Reactivity: zebrafish

Tissue tested: whole zebrafish, zebrafish eye, zebrafish retina

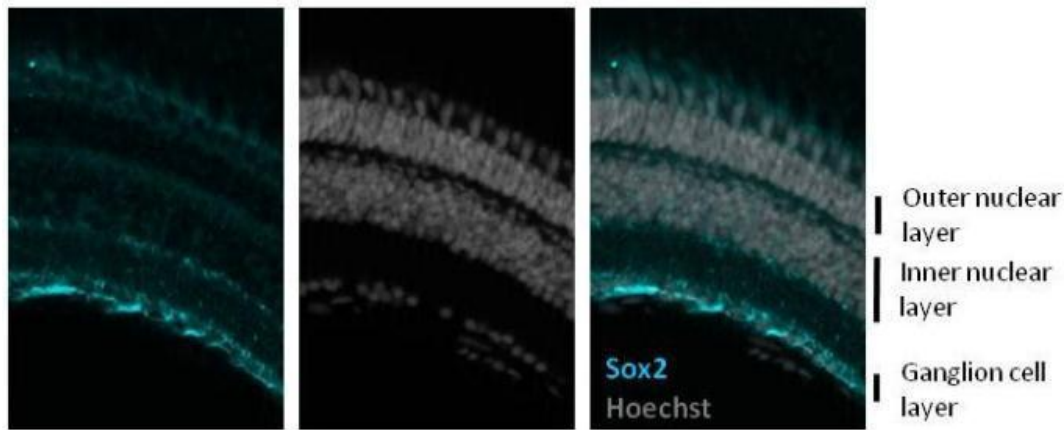
Application: IHC-Fr, WB

Location: Cytoplasm, Nucleus

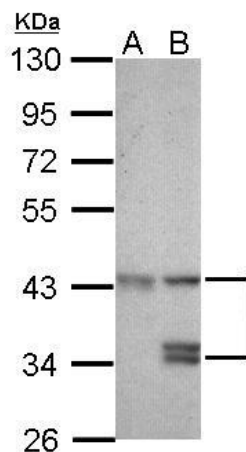
Application note:

IHC-Fr:

WB: 1:500-1:3000



Immunohistochemical analysis of frozen sections of zebrafish retina, using sox2 (GTX124477) antibody at 1:1000 dilution.



Sample (30 ug of whole cell lysate)

A: whole zebrafish

B: zebrafish eye

10% SDS PAGE

GTX124477 diluted at 1:1000

Cat. No.: GTX124302

Product name: Aldh1a2 antibody (aldehyde dehydrogenase 1 family, member A2)

Marker : Retina marker

Target: Aldh1a2

Reactivity: zebrafish

Tissue tested: whole-mount zebrafish embryo,
whole zebrafish, zebrafish heart

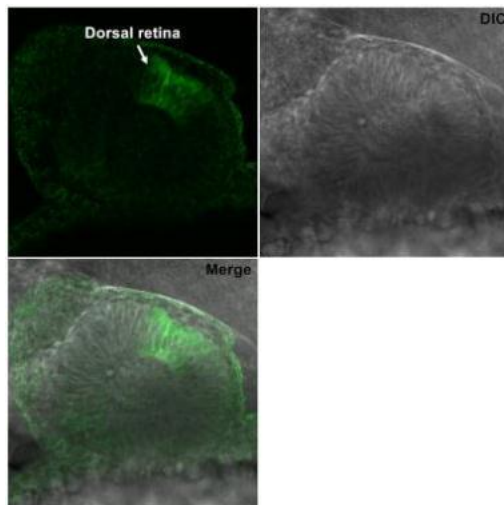
Application: WB, IHC-Wm

Location:

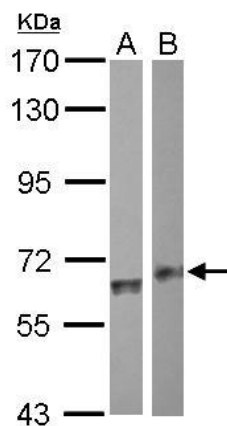
Application note:

WB: 1:500-1:3000

IHC-Wm: 1:100-1:500



Aldh1a2 antibody detects Aldh1a2 protein at dorsal retina on whole-mount zebrafish embryos by immunohistochemical analysis. Sample: Aldh1a2 antibody (GTX124302) dilution: 1:200.



Sample (30 ug of whole cell lysate)

A: whole zebrafish

B: zebrafish heart

7.5% SDS PAGE

GTX124302 diluted at 1:1000



There's a zAb for that

Cat. No.: GTX128935

Product name: Aldh1a2 antibody (aldehyde dehydrogenase 1 family, member A2)

Marker : Retina marker

Target: Aldh1a2

Tissue tested: whole-mount zebrafish embryo

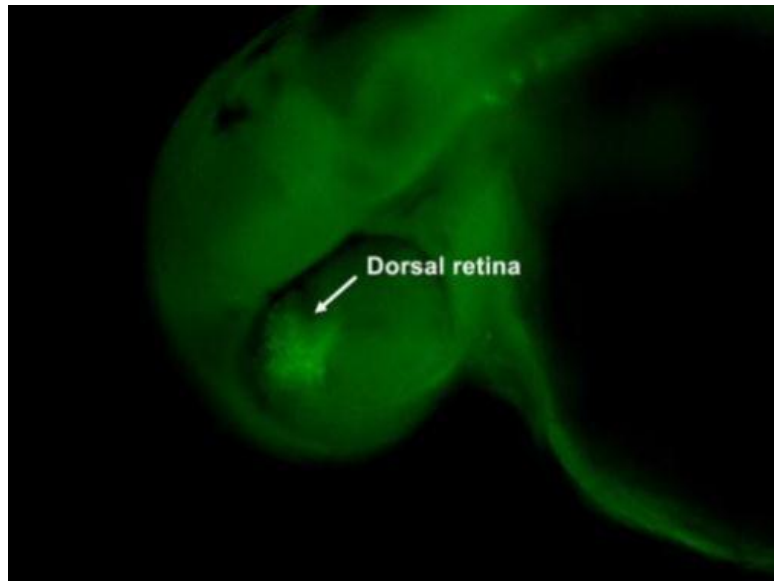
Location:

Reactivity: zebrafish

Application: IHC-Wm

Application note:

IHC-Wm: 1:100-1:500



Aldh1a2 antibody detects Aldh1a2 protein at dorsal retina on whole-mount zebrafish embryos by immunohistochemical analysis. Sample: Aldh1a2 antibody (GTX128935) dilution: 1:200.

Cat. No.: GTX124660

Product name: Tp63 antibody

Marker : Epidermal marker

Target: tp63

Tissue tested: whole-mount zebrafish embryo,
zebrafish skin

Location:

Reactivity: zebrafish

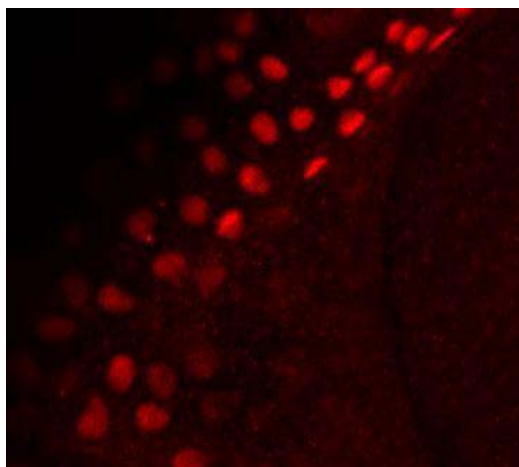
Application: IHC-P, WB,
IHC-Wm

Application note:

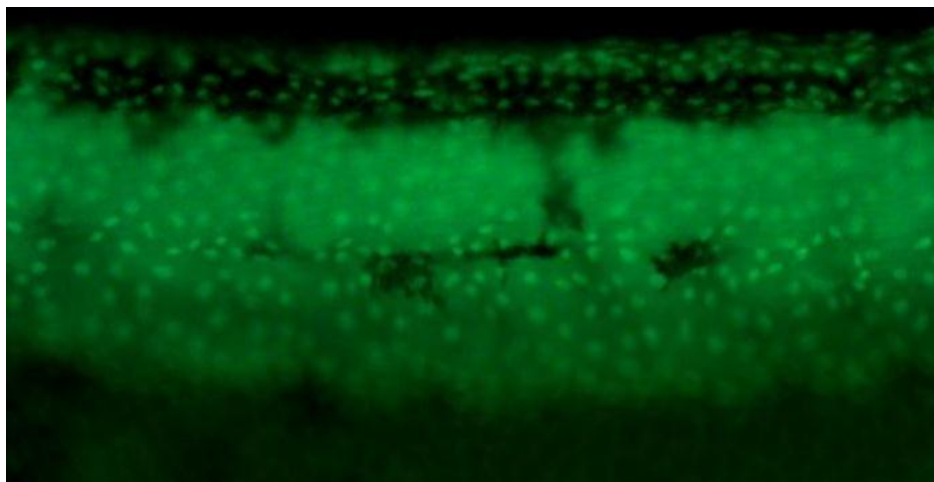
IHC-P: 1:100-1:1000

WB: 1:500-1:3000

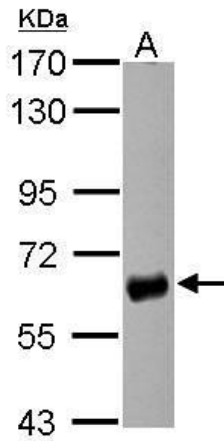
IHC-Wm: 1:100-1:500



Immunohistochemical analysis of agarose-embedded zebrafish embryo, using tp63 (GTX124660) antibody at 1:500 dilution. (This image was provided courtesy of the Schilling Lab at UC, Irvine.)



Tp63 antibody detects Tp63 protein at nucleus on whole-mount zebrafish embryos by immunohistochemical analysis. Sample: Tp63 antibody (GTX124660) dilution: 1:200.



Sample (30 ug of whole cell lysate)

A: zebrafish skin

7.5% SDS PAGE

GTX124660 diluted at 1:1000

Cat. No.: GTX127342

Product name: Histone H2A.X (phospho Ser139) antibody

Marker : DNA damage marker

Target: h2afx

Tissue tested: whole-mount zebrafish embryo

Location:

Reactivity: zebrafish

Application: IHC, IHC-P, IHC-Wm

Application note:

IHC:

IHC-P: 1:100-1:1000

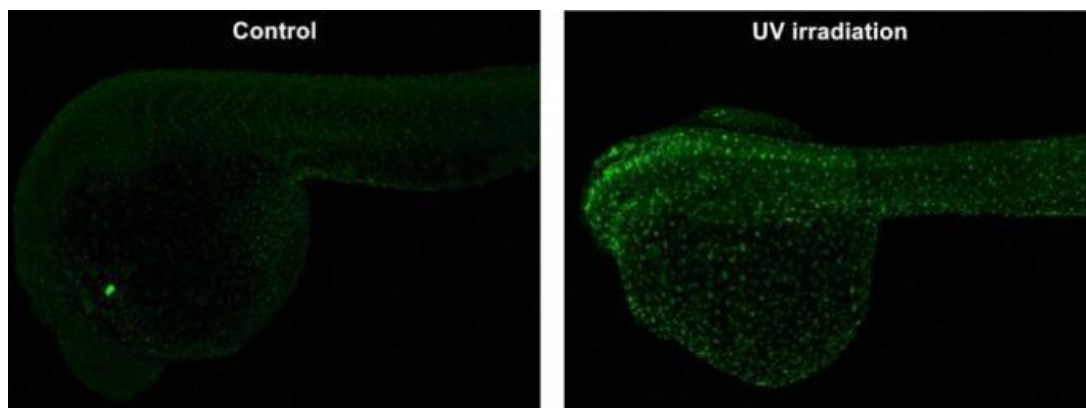
IHC-Wm: 1:100-1:500



H2afx antibody detects H2afx protein at nucleus on UV-irradiated whole-mount zebrafish embryos (under panel) by immunohistochemical analysis.

Sample: H2afx antibody (GTX127342) dilution: 1:2000.

Image provided with permission courtesy of Dr. James Amatruda.



H2afx antibody detects H2afx protein at nucleus on UV-irradiated whole-mount zebrafish embryos (right panel) by immunohistochemical analysis. Sample: H2afx antibody (GTX127342) dilution: 1:200.

Cat. No.: GTX124420

Product name: Lcp1 antibody (lymphocyte cytosolic plastin 1)

Marker : early myeloid lineage

Target: lcp1

Tissue tested: zebrafish tissue, zebrafish kidney

Location: Cytoplasm (by similarity)

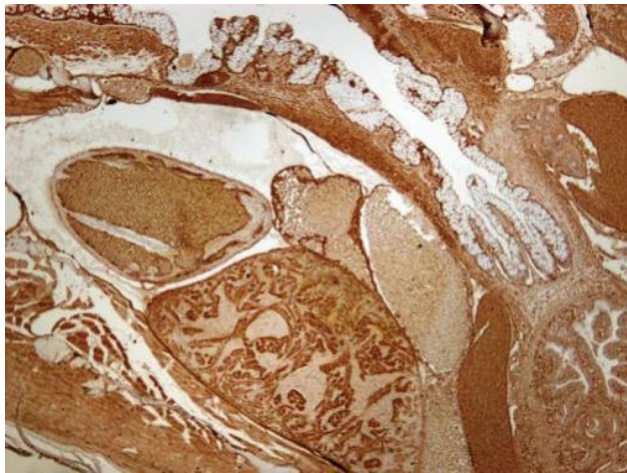
Reactivity: zebrafish

Application: IHC-P, WB,

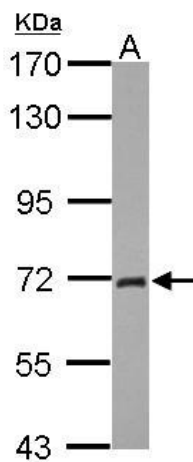
Application note:

IHC-P: 1:100-1:1000

WB: 1:500-1:3000



Immunohistochemical analysis of paraffin-embedded zebrafish tissue, using lcp1 (GTX124420) antibody at 1:300 dilution.



Sample (30 ug of whole cell lysate)

A: zebrafish kidney

7.5% SDS PAGE

GTX124420 diluted at 1:1000

Cat. No.: GTX128851

Product name: Mtmr2 antibody

Marker : pronephric duct /pattern unsure

Target: Mtmr2

Tissue tested: whole-mount zebrafish embryo

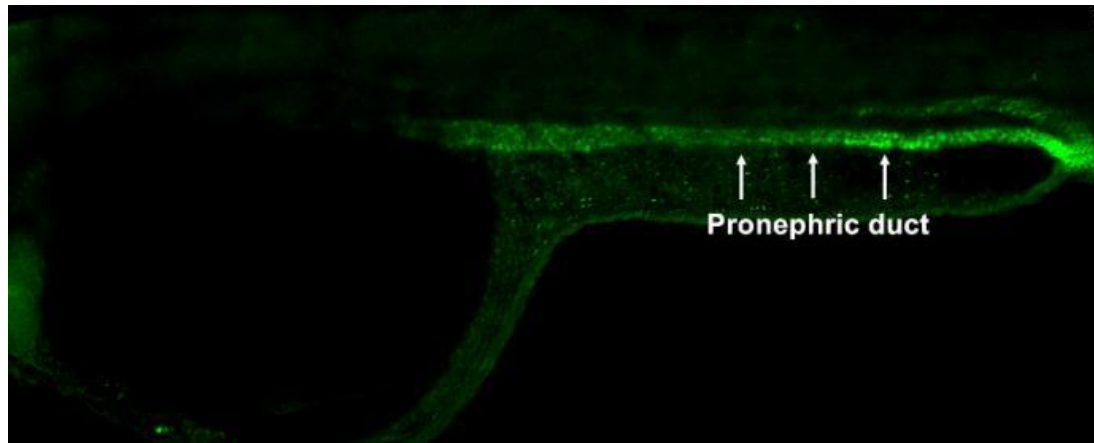
Location: Cytoplasm, endosome membrane

Reactivity: zebrafish

Application: IHC-Wm

Application note:

IHC-Wm: 1:100-1:500



Mtmr2 antibody detects Mtmr2 protein at pronephric duct on whole-mount zebrafish embryos by immunohistochemical analysis. Sample: Mtmr2 antibody (GTX128851) dilution: 1:200.

Cat. No.: GTX125890

Product name: Cdh1 antibody (cadherin 1)

Marker : cell membrane

Target: cdh1

Tissue tested: zebrafish embryo

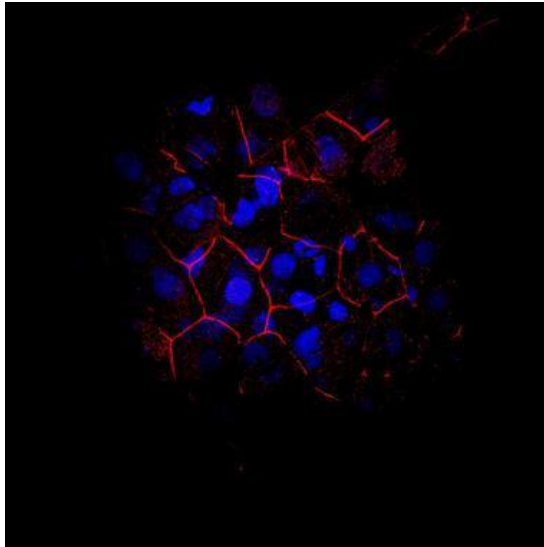
Location:

Reactivity: zebrafish

Application: IHC-Wm

Application note:

IIHC-Wm: 1:100-1:500



Immunohistochemical analysis of agarose-embedded zebrafish embryo, using E-cadherin (GTX125890) antibody at 1:100 dilution. (This image was provided courtesy of the Schilling Lab at UC, Irvine.)

Cat. No.: GTX124481

Product name: Ctnnb1 antibody (catenin beta-1)

Marker : cell membrane

Target: ctnnb1

Tissue tested: zebrafish tissue, zebrafish embryo, zebrafish heart

Location:

Reactivity: zebrafish

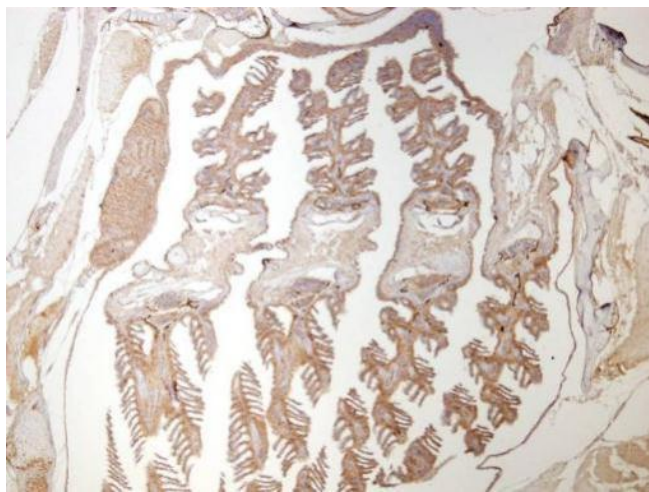
Application: ICC/IF, IHC-P, WB

Application note:

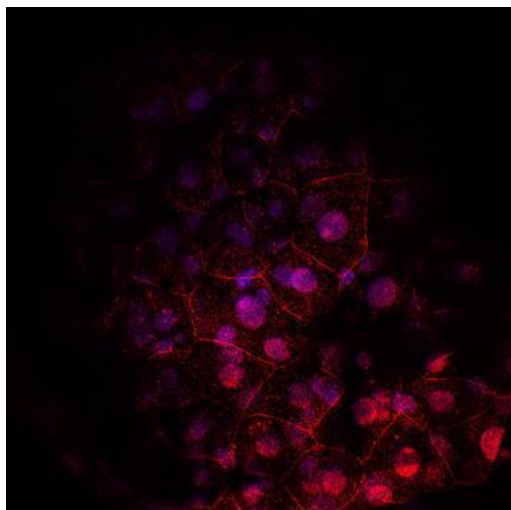
ICC/IF: 1:100-1:1000

IHC-P: 1:100-1:1000

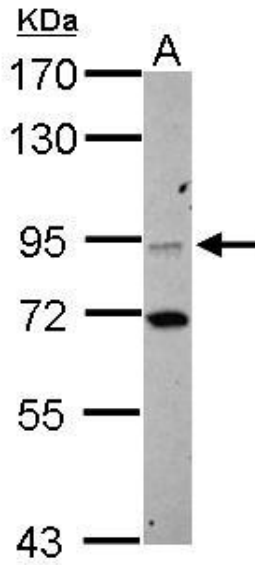
WB: 1:500-1:3000



Immunohistochemical analysis of paraffin-embedded zebrafish tissue, using ctnnb1 (GTX124481) antibody at 1:300 dilution.



Immunohistochemical analysis of agarose-embedded zebrafish embryo, using ctnnb1 (GTX124481) antibody at 1:100 dilution. (This image was provided courtesy of the Schilling Lab at UC, Irvine.)



Sample (30 ug of whole cell lysate)

A: zebrafish heart

7.5% SDS PAGE

GTX124481 diluted at 1:1000

Cat. No.: GTX124512

Product name: Ctnnb1 antibody (catenin beta-1)

Marker : cell membrane

Target: ctnnb1

Tissue tested: zebrafish tissue, zebrafish brain

Location:

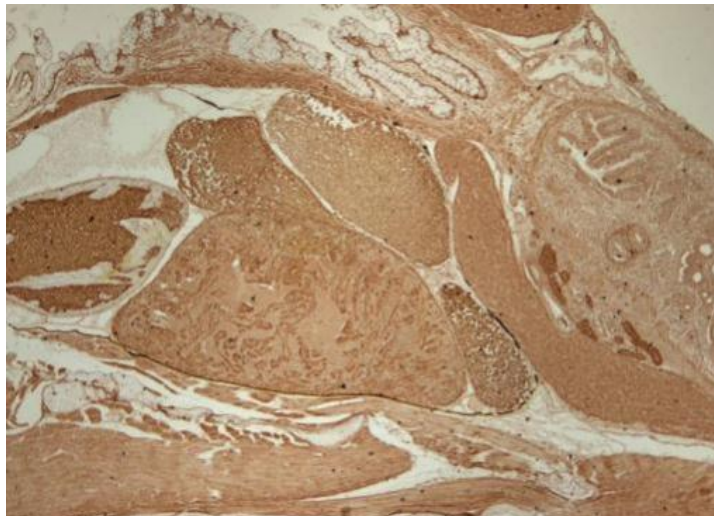
Reactivity: zebrafish

Application: IHC-P, WB

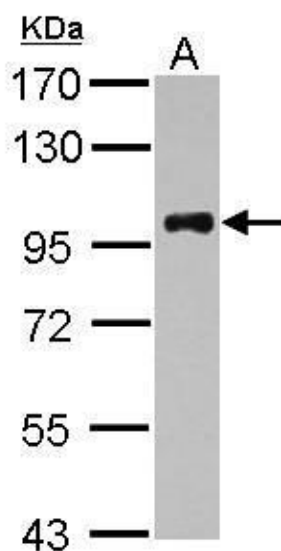
Application note:

IHC-P: 1:100-1:1000

WB: 1:500-1:3000



Immunohistochemical analysis of paraffin-embedded zebrafish tissue, using ctnnb1 (GTX124512) antibody at 1:300 dilution.



Sample (30 ug of whole cell lysate)

A: zebrafish brain

7.5% SDS PAGE

GTX124512 diluted at 1:1000

Cat. No.: GTX128840

Product name: Acvr2b antibody (activin receptor IIb)

Marker : lens /pattern unsure

Target: Acvr2b

Tissue tested: whole-mount zebrafish embryo

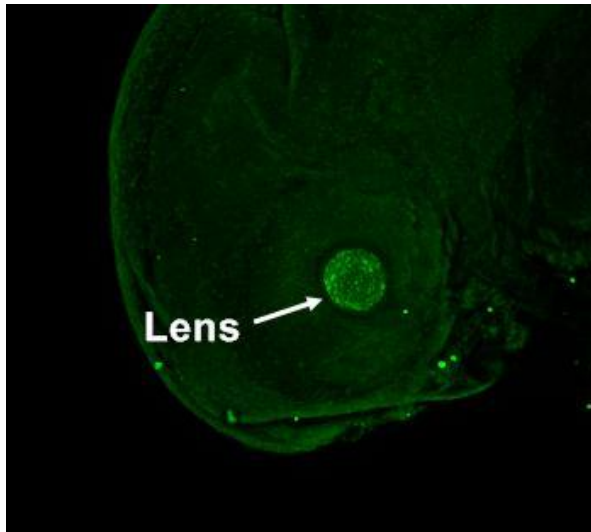
Location:

Reactivity: zebrafish

Application: IHC-Wm

Application note:

IIHC-Wm: 1:100-1:500



Acvr2b antibody detects Acvr2b protein at lens on whole-mount zebrafish embryos by immunohistochemical analysis. Sample: Acvr2b antibody (GTX128840) dilution: 1:200.

Cat. No.: GTX124496

Product name: Pcna antibody (proliferating cell nuclear antigen)

Marker : Cell proliferation marker

Target: Pcna

Tissue tested: zebrafish kidney , whole-mount
zebrafish embryo, Adult zebrafish

Location:

Reactivity: zebrafish

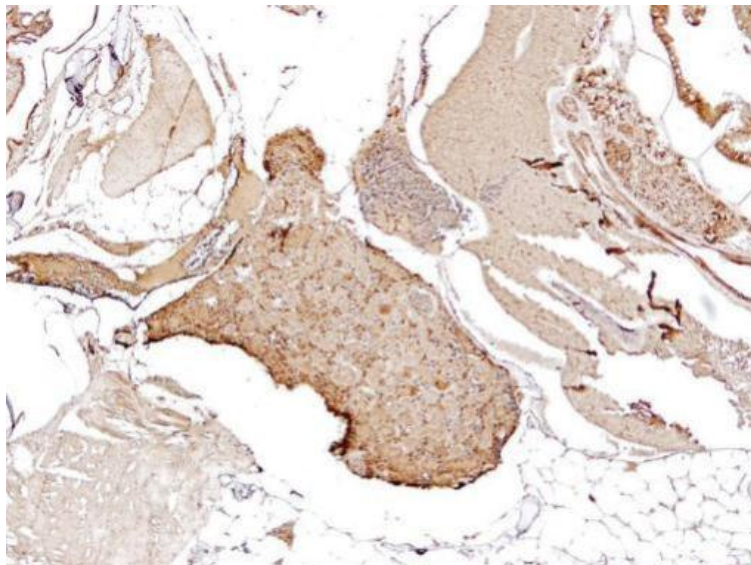
Application: IHC-P, WB, IHC-Wm

Application note:

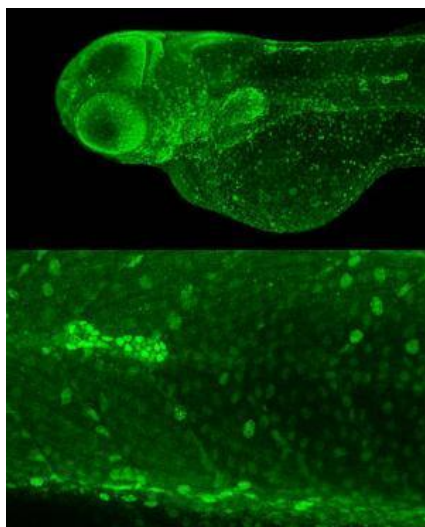
IHC-P: 1:100-1:1000

WB: 1:500-1:3000

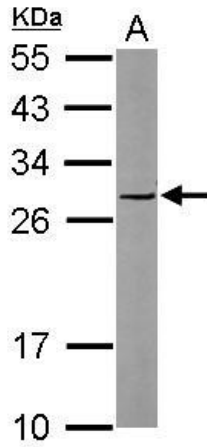
IHC-Wm: 1:100-1:500



Immunohistochemical analysis of paraffin-embedded zebrafish kidney, using pcna (GTX124496) antibody at 1:300 dilution.



Immunohistochemical analysis (whole mount) of zebrafish embryo, using pcna(GTX124496) antibody at 1:200 dilution.



Sample (10 ug of whole cell lysate)

A: Adult zebrafish

12% SDS PAGE

GTX124496 diluted at 1:1000

Cat. No.: GTX128135

Product name: p53 antibody

Target: p53

Tissue tested: zebrafish whole lysate/extract,
whole-mount zebrafish embryo,

Location:

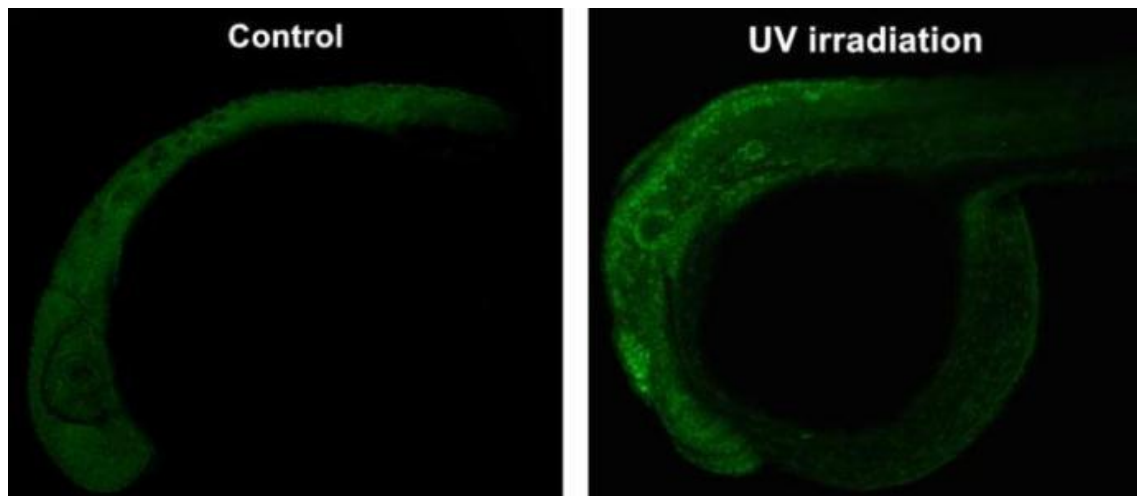
Reactivity: zebrafish

Application: WB, IHC-Wm

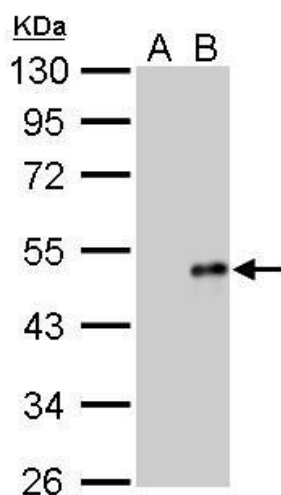
Application note:

WB: 1:500-1:3000

IHC-Wm: 1:100-1:500



tp53 antibody detects tp53 protein at nucleus on UV-irradiated whole-mount zebrafish embryos (right panel) by immunohistochemical analysis. Sample: tp53 antibody (GTX128135) dilution: 1:200.



p53 antibody detects tp53 protein by Western blot analysis.

A. 20 µg zebrafish whole lysate/extract (unirradiation)

B. 20 µg zebrafish whole cell lysate/extract (irradiation)

10 % SDS-PAGE

p53 antibody (GTX128135) dilution: 1:1000



There's a zAb for that