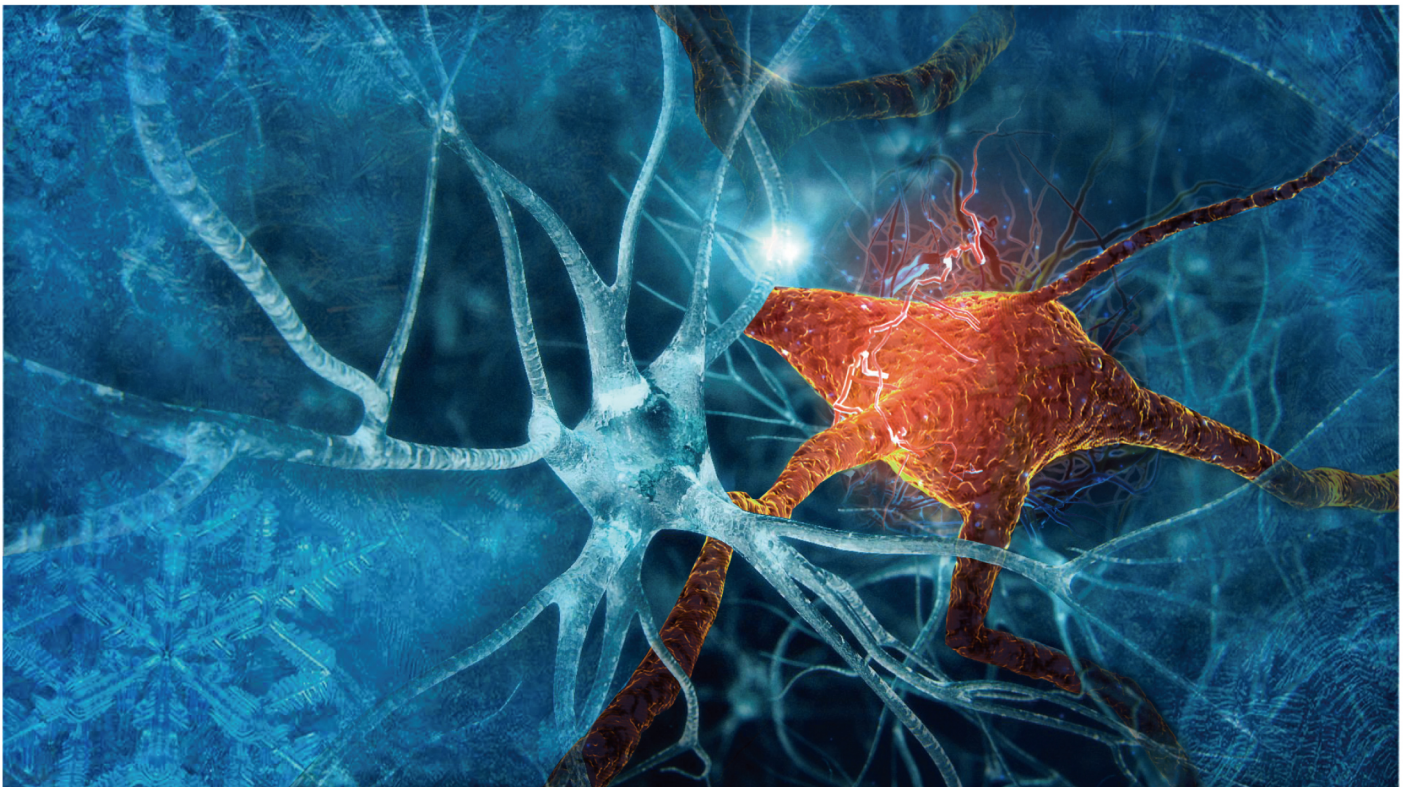


Amyotrophic Lateral Sclerosis



Amyotrophic lateral sclerosis (ALS) is a progressive neurodegenerative disorder, with which approximately 5,600 people are diagnosed each year in the US. The major clinical presentation of ALS is muscle weakness and atrophy that affect movement, speech, swallowing or breathing. Although the causative genetic change of ALS is not completely understood, recent studies have identified several genes associated with the disease. The most common genes currently known are SOD1, TDP-43, and FUS, and the more recently found C9ORF72. Of note, only three years have passed since the first report described the link between C9ORF72 gene and ALS. It has brought a wealth of new scientific understanding regarding its possible mechanisms, including toxicity due to foci formed by repeat-containing C9ORF72 transcripts and various RNA-binding proteins, repeat-associated non-ATG (RAN) translation leading to the production of inclusion-forming C9RAN proteins, and epigenetic alterations impacting C9ORF72 expression (1).

GeneTex is proud to note that our [C9orf72 antibody \(GTX119776\)](#) has been cited in several important studies in the ALS field. In addition, we offer exceptional antibodies against other key targets relevant to ALS.

Representative Product Citations:

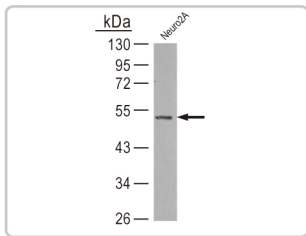
[C9orf72 antibody \(GTX119776\)](#)

Sci Transl Med. 2013 Oct 23;5(208):208ra149. (WB)

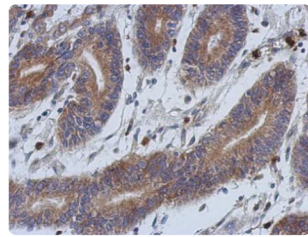
Brain. 2012 Mar;135(Pt 3):723-35. (IHC)

Lancet Neurol. 2012 Jan;11(1):54-65. (WB, ICC/IF)

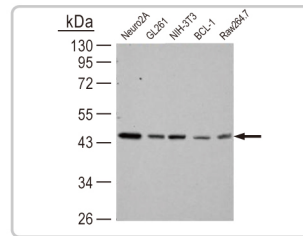
Neuron. 2011 Oct 20;72(2):245-56. (WB)



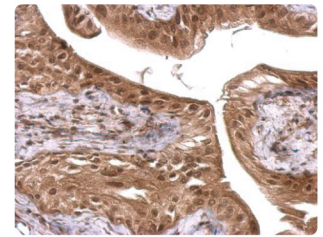
C9orf72 antibody (GTX119776)



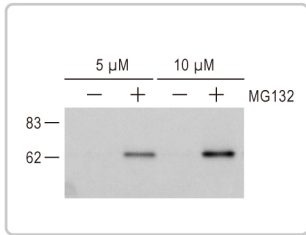
SOD1 antibody (GTX100659)



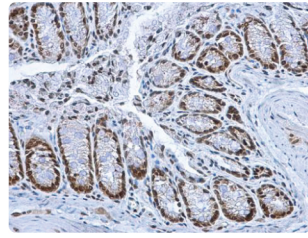
TARDBP antibody (GTX114210)



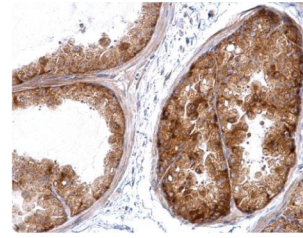
FUS antibody [C1C3] (GTX101810)



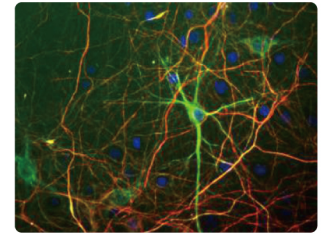
SQSTM1 (pSer403) antibody (GTX128171)



HMGB1 antibody (GTX101277)



Hsc70 antibody [N2C1], Internal (GTX111069)



NEFH antibody (GTX30665) [Red]

Citation

Cat. No.	Product	Host & Clonality	Application
GTX119776	C9orf72 antibody	Rb pAb	ICC/IF, IHC, IHC-P, WB
GTX127908	C9orf72 antibody	Rb pAb	IHC-P, WB
GTX100554	SOD1 antibody	Rb pAb	ELISA, IHC, WB
GTX100659	SOD1 antibody	Rb pAb	ICC/IF, IHC-Fr, IHC-P, WB
GTX83012	SOD1 antibody [6F5]	Ms mAb	ELISA, FACS, ICC/IF, WB
GTX83592	SOD1 antibody [8B10]	Ms mAb	FACS, IHC, IHC-P, WB
GTX114210	TARDBP / TDP-43 antibody	Rb pAb	ICC/IF, IHC-P, IP, WB, ChIP-seq
GTX100579	TARDBP / TDP-43 antibody	Rb pAb	ICC/IF, IHC-P, WB
GTX630196	TARDBP / TDP-43 antibody [GT225]	Ms mAb	WB
GTX630197	TARDBP / TDP-43 antibody [GT733]	Ms mAb	ICC/IF, WB
GTX101810	FUS antibody [C1C3]	Rb pAb	IHC-P, WB
GTX128171	SQSTM1 / p62 (phospho Ser403) antibody	Rb pAb	IHC-P, WB
GTX111393	SQSTM1 / p62 antibody	Rb pAb	ICC/IF, WB
GTX128173	SQSTM1 / p62 antibody	Rb pAb	WB
GTX111307	SQSTM1 / p62 antibody	Rb pAb	ICC/IF
GTX629890	SQSTM1 / p62 antibody [GT1478]	Ms mAb	ICC/IF, WB
GTX629888	SQSTM1 / p62 antibody [GT239]	Ms mAb	ICC/IF, WB
GTX629889	SQSTM1 / p62 antibody [GT381]	Ms mAb	ICC/IF, WB
GTX100685	SQSTM1 / p62 antibody [N3C1], Internal	Rb pAb	ICC/IF, WB
GTX81885	ALS2 antibody, C-term	Rb pAb	ELISA, IHC, IHC-P, WB
GTX120076	ALS2CR12 antibody	Rb pAb	ICC/IF, IHC-P, WB
GTX89837	Alsln / ALS2 antibody, C-term	Gt pAb	ELISA, IHC, IHC-P
GTX52495	Angiogenin antibody [7M15]	Ms mAb	IHC-P, WB
GTX42776	Angiogenin antibody [MANG-1]	Ms mAb	ELISA, IHC-Fr, IHC-P
GTX100231	DCTN1 antibody [C3], C-term	Rb pAb	ICC/IF, IHC-P, WB
GTX101144	Hsc70 antibody	Rb pAb	ICC/IF, IHC-P, WB
GTX111150	Hsc70 antibody [C1C3]	Rb pAb	IHC-P, WB
GTX111069	Hsc70 antibody [N2C1], Internal	Rb pAb	ICC/IF, IHC-P, WB
GTX30665	NEFH antibody	Chk pAb	ICC/IF, WB
GTX101117	NRG1 antibody	Rb pAb	WB
GTX101974	Peripherin antibody [N1N3]	Rb pAb	WB
GTX102005	Peripherin antibody	Rb pAb	IHC-P, WB
GTX51152	Senataxin antibody	Rb pAb	IHC-P
GTX101047	SMN1 antibody	Rb pAb	ICC/IF, WB
GTX60453	SMN1 antibody [5H1]	Ms mAb	ELISA, ICC/IF, IHC, WB
GTX118263	SMNDC1 antibody [N1C3-2]	Rb pAb	ICC/IF, IHC-P, WB
GTX101089	VCP antibody	Rb pAb	ICC/IF, IHC-P, IP, WB
GTX128925	Vcp antibody	Rb pAb	IHC-Wm
GTX113030	VCP antibody [N1N2], N-term	Rb pAb	ICC/IF, IHC-P, IP, WB
GTX113099	VCP antibody [N3C2], Internal	Rb pAb	ICC/IF, IHC-P, WB

Reference: 1. *Acta Neuropathol.* 2014 Mar; 127(3):359-76.



International

Tel 886.3.6208988
 Fax 886.3.6209098
 Address 6F-2, No.89, Dongmei Rd., Hsinchu 300, Taiwan (R.O.C.)
 E-mail international@genetex.com

USA

Toll-free 1.877.GeneTex(1.877.436.3839)
 Fax 1.949.309.2888
 Address 2456 Alton Parkway, Irvine, CA 92606 USA
 E-mail info@genetex.com



www.genetex.com