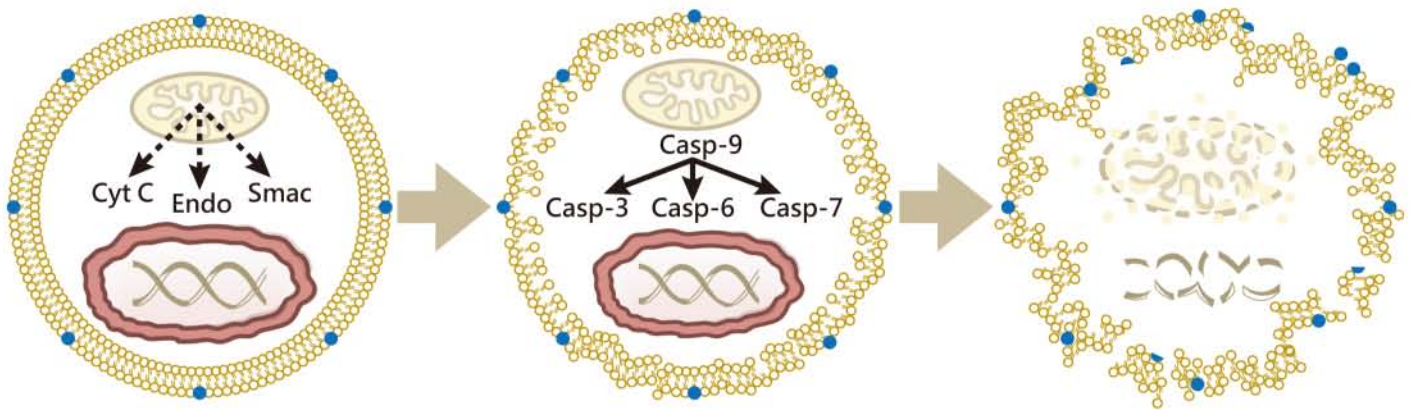
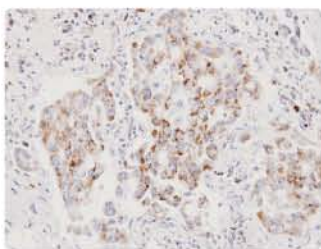


# Apoptosis Markers

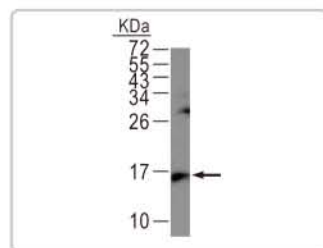


## Mitochondrial Release

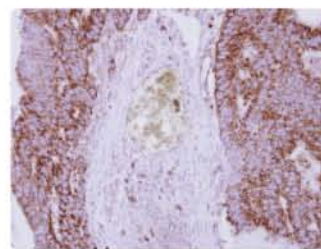
	Cat. No.	Product name	Host & Clonality	Reactivity	Application
AIF	GTX102399	AIF antibody	Rb pAb	Hu	ICC/IF, IHC-P, WB
	GTX113306	AIF antibody	Rb pAb	Hu, Ms	ICC/IF, IHC-P, WB
Cyt C	GTX108585	Cytochrome C antibody	Rb pAb	Hu, Ms	IHC-P, WB
	GTX112683	Cytochrome C antibody	Rb pAb	Hu, Ms	IHC-P, WB
	GTX23255	Cytochrome C antibody [6H2.B4]	Ms mAb	Hu, Ms, Rat	EM, IHC-Fr, IP
Endo G	GTX114385	Endo G antibody	Rb pAb	Hu, Ms	WB
	GTX61695	Endo G antibody [EP1665Y]	Rb mAb	Hu, Ms, Rat	WB
	GTX84986	EndoG antibody [7F2D7]	Ms mAb	Hu, Ms, Rat	ELISA, WB
HtrA2 / Omi	GTX110703	HtrA2 antibody	Rb pAb	Hu	IHC-P, WB
	GTX62115	HtrA2 antibody [EPR22]	Rb mAb	Hu, Ms, Rat	FACS, ICC/IF, IHC-P, IP, WB
	GTX37250	HtrA2 antibody	Ms mAb	Hu	ELISA, WB
Smac / Diablo	GTX106746	Smac antibody	Rb pAb	Hu	IHC-P, WB
	GTX113108	Smac antibody	Rb pAb	Hu	IHC-P, WB
	GTX30249	Smac antibody [78-1-118]	Ms mAb	Hu, Ms, Rat	WB



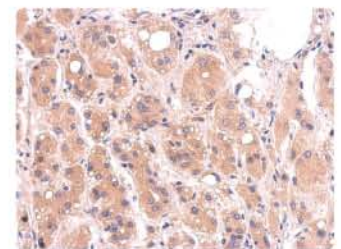
**AIF antibody (GTX102399):**  
IHC analysis of paraffin-embedded lung cancer tissue.



**Cytochrome C antibody (GTX112683):**  
WB analysis of 293T whole cell lysate.



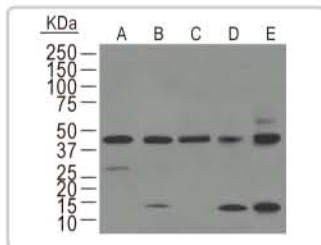
**Cytochrome C antibody (GTX108585):**  
IHC analysis of paraffin-embedded colon carcinoma.



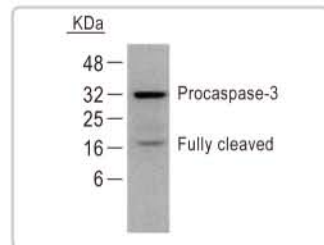
**Smac antibody (GTX113108):**  
IHC analysis of paraffin-embedded hepatoma tissue.

## Caspase Activation

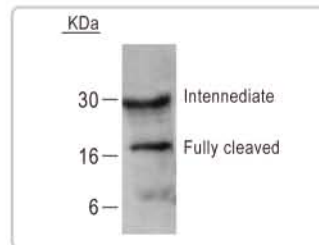
	Cat. No.	Product name	Host & Clonality	Reactivity	Application
Caspase-1	GTX62815	Caspase-1 antibody [EPR4321]	Rb mAb	Hu, Ms, Rat	ICC/IF, IHC-M, IHC-P, WB
	GTX86897	Cleaved Caspase-1 (Asn120) antibody	Rb pAb	Hu	ELISA, WB
Caspase-2	GTX61023	Caspase-2 antibody [Y61]	Rb mAb	Hu, Ms	FACS, WB
	GTX86956	Cleaved Caspase-2 (Gly170) antibody	Rb pAb	Hu	ELISA, WB
	GTX86954	Cleaved Caspase-2 (Thr325) antibody	Rb pAb	Hu, Ms, Rat	ELISA, WB
Caspase-3	GTX59551	Caspase-3 antibody [C33]	Ms mAb	Hu, Ms, Rat	WB
	GTX61121	Active Caspase-3 antibody [E83-77]	Rb mAb	Hu	ICC/IF, IHC-P, WB
	GTX22302	Active Caspase-3 antibody	Rb pAb	Hu, Ms, Rat	ICC/IF, IHC-Fr, IHC-P, WB
	GTX86952	Cleaved Caspase-3 (Asp175) antibody	Rb pAb	Hu, Ms, Rat	ELISA, IHC, WB
Caspase-4	GTX86890	Cleaved Caspase-4 (Gln81) antibody	Rb pAb	Hu	ELISA, WB
Caspase-5	GTX59707	Caspase-5 antibody	Rb pAb	Hu, Ms, Hm, Mk, Rat, Bov	WB
	GTX86923	Cleaved Caspase-5 (Asp121) antibody	Rb pAb	Hu	ELISA, WB
	GTX86899	Cleaved Caspase-5 (Ser331) antibody	Rb pAb	Hu	ELISA, WB
Caspase-6	GTX62616	Caspase-6 antibody [EPR4405]	Rb mAb	Hu, Ms, Rat	FACS, IP, WB
	GTX59553	Active Caspase-6 antibody	Rb pAb	Hu, Ms, Rat	WB
	GTX86896	Cleaved Caspase-6 (Asp162) antibody	Rb pAb	Ms, Rat	ELISA, IHC, WB
Caspase-7	GTX59554	Active Caspase-7 antibody	Rb pAb	Hu, Ms, Rat	IHC, IP, WB
	GTX86925	Cleaved Caspase-7 (Asp198) antibody	Rb pAb	Hu, Ms	ELISA, IHC, WB
Caspase-8	GTX110723	Caspase-8 antibody	Rb pAb	Hu	WB
	GTX59607	Active Caspase-8 antibody	Rb pAb	Ms, Rat	WB
	GTX86893	Cleaved Caspase-8 (Asp384) antibody	Rb pAb	Hu	ELISA, WB
Caspase-9	GTX22324	Active Caspase-9 antibody	Rb pAb	Hu	ICC/IF, IP, WB
	GTX86945	Cleaved Caspase-9 (Asp315) antibody	Rb pAb	Hu	ELISA, IHC, WB
	GTX86928	Cleaved Caspase-9 (Asp330) antibody	Rb pAb	Hu	ELISA, IHC, WB
	GTX86912	Cleaved Caspase-9 (Asp353) antibody	Rb pAb	Ms, Rat	ELISA, IHC, WB



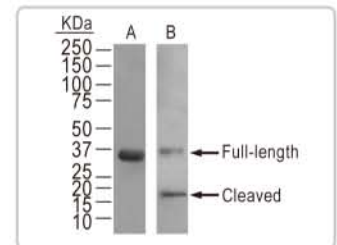
**Caspase-1 antibody [EPR4321] (GTX62815):**  
WB analysis of (A) THP-1, (B) THP-1+TPA+LPS, (C) Jurkat, (D) C6, and (E) NIH/3T3 cell lysates.



**Caspase-3 antibody [C33] (GTX59551):**  
WB analysis of HeLa cells treated with 2 μM of camptothecin (GTX47937).



**Caspase-5 antibody (GTX59707):**  
WB analysis of rat kidney tissue lysate.



**Caspase-6 antibody [EPR4405] (GTX62616):**  
WB analysis of (A) untreated and (B) staurosporine-treated Jurkat cells.

## Cleavage of Caspase Substrates

	Cat. No.	Product name	Host & Clonality	Reactivity	Application
DFF45	GTX86959	Cleaved DFF45 (Asp224) antibody	Rb pAb	Hu	ELISA, IHC
Lamin A/C	GTX63057	Cleaved Lamin A/C (Asp230) antibody [EPR4520]	Rb mAb	Hu, Ms, Rat	IP, WB
PARP-1	GTX100573	PARP-1 (p116/p85) antibody	Rb pAb	Hu	ICC/IF, WB
	GTX61028	PARP-1 (p116/p25) antibody [E102]	Rb mAb	Hu, Rat	FACS, ICC/IF, IHC-P, WB
	GTX61029	Cleaved PARP-1 p85 antibody [Y34]	Rb mAb	Hu, Rat	FACS, ICC/IF, IP, WB
	GTX61017	Cleaved PARP-1 p25 antibody [E51]	Rb mAb	Hu, Ms	FACS, ICC/IF, IHC-M, IHC-P, IP, WB
ROCK1	GTX59604	Cleaved ROCK1 antibody [12M03]	Ms mAb	Hu, Ms	WB

## Apoptosis Inducers

Cat. No.	Product name	Cat. No.	Product name
GTX47933	Set of 5 Apoptosis Inducers (1,000X)	GTX47936	Cycloheximide (1,000X)
GTX47938	Actinomycin D (1,000X)	GTX47935	Dexamethasone (1,000X)
GTX47937	Camptothecin (1,000x)	GTX47934	Etoposide (1,000X)

### Selected Application References

**Caspase-8 antibody (GTX110723)**  
Zecevic, A. et al. (2011) Clin Cancer Res. 17:4731-41.

**PARP-1 antibody (GTX100573)**  
Liu, C.H. et al. (2011) J Ethnopharmacol. 137:503-11. (WB; Hu)

**PARP antibody [10H] (GTX14459)**  
Gottipati, P. et al. (2010) Cancer Res. 70:5389-98.