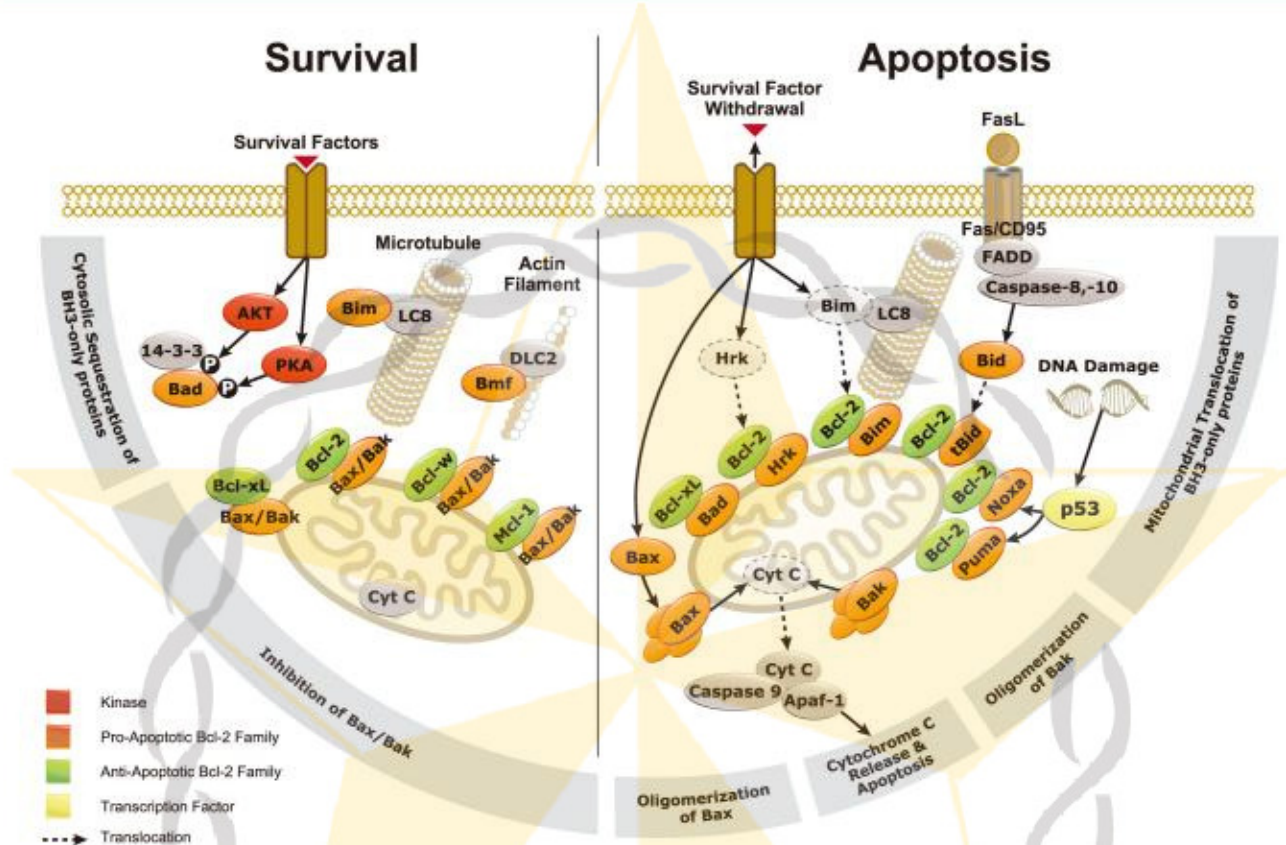


Bcl-2 Family



B-cell lymphoma-2 (Bcl-2)-family proteins play an important role in regulating the induction of apoptosis. Based on their protein structure and function, the Bcl-2 family members can be further subdivided into three groups: the pro-apoptotic, anti-apoptotic, and BH3-only subfamilies. The pro-apoptotic Bax-like subfamily promotes apoptosis by forming pores in the mitochondrial outer membrane and regulating mitochondrial cytochrome C release, ultimately inducing cell death through the caspase cascade. Anti-apoptotic proteins, such as Bcl-2, contain a transmembrane Bcl-2 homology (BH) domain which mediates their localization to the mitochondrial membrane, where they inhibit apoptosis by interacting with and sequestering pro-apoptotic family members. The BH3-only subfamily is composed of proteins that share little sequence homology with other Bcl-2 family members except the BH3 domain. Many cellular signaling pathways including death receptors, growth factor receptors and DNA damage sensors converge on Bcl-2 family members to modulate the induction of apoptosis.

GeneTex is proud to introduce a comprehensive selection of high quality Bcl-2 family antibodies to enhance your research. In addition, our scientists have developed three Bcl-2 Family Sampler Kits with combinations of antibodies to Bcl-2 family proteins. These Bcl-2 Family Sampler Kits are convenient and efficient tools to study Bcl-2 family proteins and their role in apoptosis.

Bcl-2 Family General Apoptosis Research Sampler Kit (GTX300026)

Cat. No.	Product name	Host & Clonality	Application	Package
GTX100064	Bcl-2 antibody	Rb pAb	WB	25 ul
GTX100632	Bcl-X antibody	Rb pAb	IHC, WB	25 ul
GTX102026	Mcl-1 antibody	Rb pAb	ICC/IF, WB	25 ul
GTX109683	Bax antibody	Rb pAb	ICC/IF, WB	25 ul
GTX100063	Bak antibody	Rb pAb	WB	25 ul
GTX61181	Bad (N-term) [Y208] antibody	Rb mAb	FACS, ICC/IF, IHC, IP, WB	25 ul
GTX61282	Puma (C-term) [EP512Y] antibody	Rb mAb	FACS, ICC/IF, IHC, IP, WB	25 ul

Anti-apoptotic Bcl-2 Family Sampler Kit (GTX300024)

Cat. No.	Product name	Host & Clonality	Application	Package
GTX101291	Bcl-2 antibody	Rb pAb	WB	25 ul
GTX105661	Bcl-X antibody	Rb pAb	IHC, WB	25 ul
GTX102026	Mcl-1 antibody	Rb pAb	ICC/IF, WB	25 ul
GTX111872	Bcl-B antibody	Rb pAb	IHC, ICC/IF, WB	25 ul
GTX61270	Bcl2A1/Bfl1 (N-term) [EP517Y] antibody	Rb mAb	FACS, ICC/IF, IHC, WB	25 ul

Pro-apoptotic Bcl-2 Family Sampler Kit (GTX300025)

Cat. No.	Product name	Host & Clonality	Application	Package
GTX100632	Bcl-X antibody	Rb pAb	IHC, WB	25 ul
GTX109683	Bax antibody	Rb pAb	ICC/IF, WB	25 ul
GTX100063	Bak antibody	Rb pAb	WB	25 ul
GTX110568	Bid antibody	Rb pAb	IHC-P, WB	25 ul
GTX61181	Bad (N-term) [Y208] antibody	Rb mAb	FACS, ICC/IF, IHC, IP, WB	25 ul
GTX61013	Bim antibody	Rb mAb	ICC/IF, IHC, IP, WB	25 ul
GTX61282	Puma (C-term) [EP512Y] antibody	Rb mAb	FACS, ICC/IF, IHC, IP, WB	25 ul

Selected antibodies for Bcl-2 family

Cat. No.	Product name	Host & Clonality	Application	Reactivity
Anti-apoptotic				
GTX100064	Bcl-2 antibody	Rb pAb	WB	Hu
GTX101291	Bcl-2 antibody	Rb pAb	WB	Hu
GTX61005	Bcl-2 [E17] antibody	Rb mAb	FACS, ICC/IF, IHC, IP, WB	Hu, Ms
GTX21905	Bcl-2 phospho S70 antibody	Rb pAb	ELISA, IHC-P	Hu
GTX21908	Bcl-2 phospho T56 antibody	Rb pAb	IHC, WB	Hu
GTX100632	Bcl-X antibody	Rb pAb	IHC, WB	Hu
GTX105661	Bcl-X antibody	Rb pAb	IHC, WB	Hu, Ms
GTX61006	Bcl-X [E18] antibody	Rb mAb	FACS, ICC/IF, IHC, IP, WB	Hu, Ms, Rat
GTX23193	Bcl-X [2H12] antibody	Ms mAb	FACS, ICC/IF, IHC-P, IP	Hu, Ms, Rat, Other
GTX17834	Bcl-X [SPM165] antibody	Ms mAb	FACS, ICC/IF, IHC-P	Hu, Ms
GTX102026	Mcl-1 antibody	Rb pAb	ICC/IF, WB	Hu
GTX61087	Mcl-1 [Y37] antibody	Ms mAb	FACS, ICC/IF, IHC, IP, WB	Hu
GTX61270	Bcl2A1/Bfl1 (N-term) [EP517Y] antibody	Rb mAb	FACS, ICC/IF, IHC, WB	Hu, Ms
Pro-apoptotic				
GTX109683	Bax antibody	Rb pAb	ICC/IF, WB	Hu
GTX73929	Bax [2D2] antibody	Ms mAb	IHC-P, IP, WB	Hu
GTX23191	Bax [5B7] antibody	Ms mAb	ICC/IF, WB	Ms
GTX61026	Bax [E63] antibody	Rb mAb	IHC, IP, WB	Hu, Ms, Rat
GTX100063	Bak antibody	Rb pAb	WB	Hu
GTX61182	Bak [Y164] antibody	Rb mAb	FACS, ICC/IF, IHC, WB	Hu
GTX10808	Bak [TC100] antibody	Ms mAb	IHC-Fr, WB	Hu
GTX22273	Bak antibody	Gt pAb	WB	Hu, Ms, Rat
GTX22304	Bok antibody	Rb pAb	WB	Rat
BH3-only				
GTX15184	Bim antibody	Rb pAb	IHC-P, WB	Hu, Ms, Rat
GTX17031	Bim antibody	Gt pAb	ELISA, WB	Hu
GTX61013	Bim [Y36] antibody	Rb mAb	ICC/IF, IHC, IP, WB	Hu
GTX27975	Bad antibody	Rb pAb	IHC-Fr, WB	Ms, Rat
GTX61181	Bad (N-term) [Y208] antibody	Rb mAb	FACS, ICC/IF, IHC, IP, WB	Hu, Ms, Rat
GTX21435	Bad phospho S112 antibody	Rb pAb	IP, WB	Hu, Ms, Rat
GTX25687	Bad phospho S128 antibody	Rb pAb	WB	Hu, Ms, Rat
GTX110568	Bid antibody	Rb pAb	IHC-P, WB	Hu
GTX101323	Bid antibody	Rb pAb	WB	Hu
GTX22388	Bid antibody	Rb pAb	IHC-Fr, IP, WB	Hu
GTX61003	Bid [Y8] antibody	Rb mAb	FACS, ICC/IF, IHC, IP, WB	Hu
GTX70455	Puma antibody	Rb pAb	WB	Hu
GTX61282	Puma (C-term) [EP512Y] antibody	Rb mAb	FACS, ICC/IF, IHC, IP, WB	Hu
GTX13687	Noxa antibody	Rb pAb	WB	Hu, Ms, Rat
GTX13654	Noxa [114C307] antibody	Ms mAb	WB	Hu
GTX74501	Bmf antibody	Rb pAb	WB	Hu
GTX29655	Bmf antibody	Rb pAb	WB	Hu, Ms