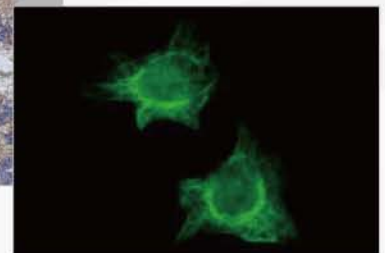
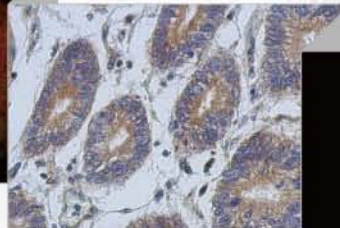
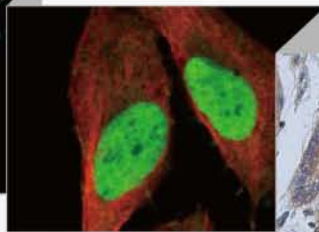
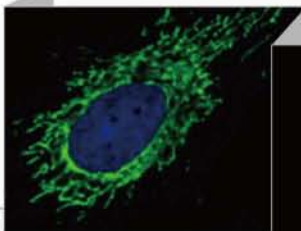
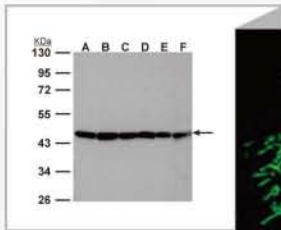


# Antibody Panels

Quality Antibodies  
Quality Results





## The Company

GeneTex produces high quality antibodies validated through extensive research, development, and testing. Our staff and researchers have collectively earned a trusted reputation from the research community for the quality and reliability of our antibodies. The secret to our success is the complementation of scientific expertise and production mastery in our state-of-the-art laboratory and animal facility.

Our facility provides large-scale antibody production capabilities, which employ highly specific antigen affinity purification. This has facilitated the establishment of a comprehensive antibody collection covering a wide spectrum of research fields.

Because of GeneTex's extensive experience in antibody manufacturing, we are uniquely able to serve the demands of the scientific community by providing accurate technical support and reliable customer service.



# Table of Contents

<b>Controls &amp; Tags</b>	
-Loading Controls .....	02
-Organelle & Subcellular Localization .....	03
-Epitope Tags .....	03
<b>Cell Biology</b>	
-Apoptosis .....	04
-Autophagy .....	05
-DNA Repair .....	05
-EMT .....	09
-Hypoxia .....	09
-HSP / Chaperone .....	10
-NOX .....	10
-PAK1 .....	10
-Vimentin .....	10
<b>Epigenetics</b>	
-DNA Methylation .....	11
-Histone Modification .....	11
-Histone Modifying Enzymes .....	12
<b>Immunology</b> .....	12
<b>Signaling</b>	
-PI3K-Akt-mTOR Pathway .....	14
-NFkB Pathway .....	15
-Wnt Pathway .....	16
-Raf, Hedgehog & STAT .....	16
<b>Stem Cells &amp; Cell Type Markers</b>	
-iPSC .....	17
-Neural & Pancreatic Cell Markers .....	18

## Application Key

- ChIP** - Chromatin-immunoprecipitation
- ELISA** - Enzyme-linked immunosorbent assay
- FACS** - Fluorescence-activated cell sorting
- ICC/IF** - Immunocytochemistry / Immunofluorescence
- IHC-Fr** - Immunohistochemistry frozen sections
- IHC-P** - Immunohistochemistry paraffin-embedded sections
- IP** - Immunoprecipitation
- WB** - Western blot

## Host & Reactivity Key

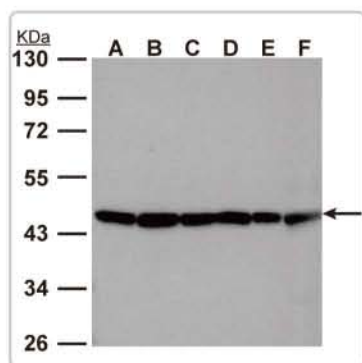
- Ce** - C. elegans
- Dm** - Drosophila
- Hu** - Human
- Mk** - Monkey
- Ms** - Mouse
- Rat** - Rat
- Rice** - Rice
- Y** - Yeast
- Zfsh** - Zebrafish

# Controls & Tags

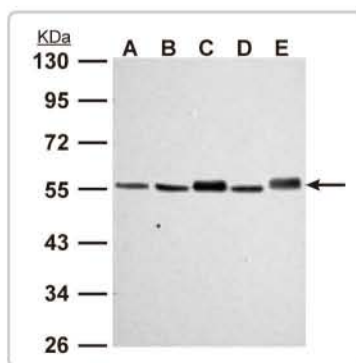
## Loading Control

Cat. No.	Product	Content	Reactivity	Application	M.W.
GTX300003	Loading Control Antibody Panel-1	PARP1 antibody	Hu	ICC/IF, WB	~113 kDa
		Tubulin antibody	Hu, Ms,	ICC/IF, IHC-P, WB	~50 kDa
		GAPDH antibody	Hu, Ms, Rat, Dm	ICC/IF, IHC-P, WB	~36 kDa
		COX4 antibody	Hu	ICC/IF, IHC-P, WB	~20 kDa
		Rabbit IgG antibody (HRP)	Rb	ELISA, WB	
GTX300004	Loading Control Antibody Panel-2	PARP1 antibody	Hu	ICC/IF, WB	~113 kDa
		Tubulin antibody	Hu, Ms	ICC/IF, IHC-P, WB	~50 kDa
		Actin antibody	Hu, Ms, Rat, Dm, Ce, Y, Rice	ICC/IF, IHC-P, WB	~42 kDa
		PCNA antibody	Hu, Ms, Rat	ICC/IF, IHC-P, WB	~29 kDa
		Rabbit IgG antibody (HRP)	Rb	ELISA, WB	
GTX300040	Internal Control Antibody Panel-1	p84 antibody [5E10]	Hu, Ms, Rat	ICC/IF, IP, WB	~84 kDa
		GAPDH antibody [GT239]	Hu, Ms, Rat, Dm, Zfish, Y	ICC/IF, IHC-P, WB	~36 kDa
		Actin antibody	Hu, Ms, Rat, Dm, Ce, Y, Rice	ICC/IF, IHC-P, WB	~42 kDa
GTX300041	Internal Control Antibody Panel-2	Tubulin antibody	Hu, Ms, Rat, Dm	ICC/IF, IHC-P, WB	~50 kDa
		GAPDH antibody	Hu, Ms, Rat, Dm	ICC/IF, IHC-P, WB	~36 kDa
		Tubulin antibody [GT115]	Hu, Ms, Rat, Dm, Zfish	ICC/IF, IHC-P, WB	~50 kDa
		GAPDH antibody [GT239]	Hu, Ms, Rat, Dm, Zfish, Y	ICC/IF, IHC-P, WB	~36 kDa
GTX300043	Loading Control & Organelle Marker Antibody Panel	GAPDH antibody [GT239]	Hu, Ms, Rat, Dm, Zfish, Y	ICC/IF, IHC-P, WB	~36 kDa
		Mouse IgG antibody (HRP)	Ms	ELISA, WB	

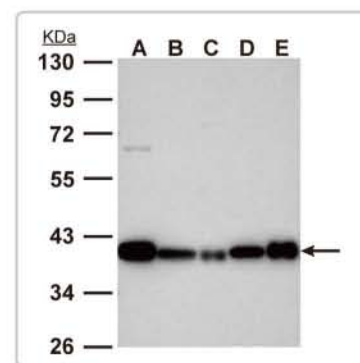
### GTX300041 Internal Control Antibody Panel-1



**Actin antibody (GTX109639):**  
WB analysis of (A) 293T, (B) NTH-3T3, (C) mouse brain, (D) PC-12, (E) rat brain, and (F) Drosophila lysates.



**Tubulin antibody (GTX112141):**  
WB analysis of (A) 293T, (B) NIH-3T3, (C) mouse brain, (D) PC-12, and (E) rat brain lysates.

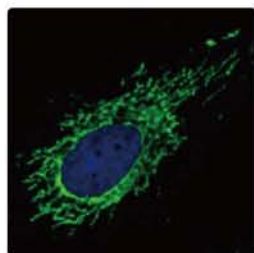


**GAPDH antibody (GTX100118):**  
WB analysis of (A) 293T, (B) NIH-3T3, (C) mouse brain, (D) PC-12, and (E) rat brain lysates.

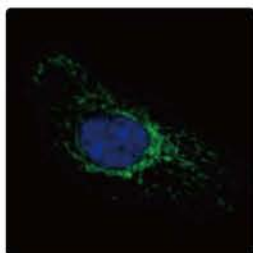
## Organelle & Subcellular Localization

Cat. No.	Product	Content	Reactivity	Application	Localization
GTX300001	Organelle Marker Antibody Panel-1	PARP1 antibody	Hu	ICC/IF, WB	Nucleus
		NHP2L1 antibody	Hu	ICC/IF, IHC-P, WB	Nucleolus
		Calnexin antibody	Hu, Ms	ICC/IF, IHC-P, IP, WB	ER
		AKR7A2 antibody	Hu	ICC/IF, IHC-P, WB	Golgi
		Tubulin antibody	Hu, Ms	ICC/IF, IHC-P, WB	Cytosol
GTX300002	Organelle Marker Antibody Panel-2	Rabbit IgG antibody (HRP)	Rb	ELISA, WB	
		PCNA antibody	Hu, Ms, Rat	ICC/IF, IHC-P, WB	Nucleus
		RPA70 antibody	Hu, Ms	ICC/IF, IHC-P, WB	PML body
		ALDH2 antibody	Hu, Ms	ICC/IF, WB	Mitochondria
		Actin antibody	Hu, Ms, Rat, Dm, Ce, Y, Rice	ICC/IF, IHC-P, WB	Cytosol
		EGFR antibody	Hu	FACS, ICC/IF, IHC-P, WB	Plasma membrane
		Rabbit IgG antibody (HRP)	Rb	ELISA, WB	
GTX300079	Autophagosome Antibody Panel	Atg5 antibody	Hu	WB	
		Atg12 antibody	Hu, Ms, Rat	ICC/IF, IHC-P, WB	
		LC3 antibody	Ms, Rat	WB	
		LC3B antibody	Hu	ICC/IF, WB	
GTX300082	Mitochondria Antibody Panel	Rabbit IgG antibody (HRP)	Rb	ELISA, WB	
		COX4 antibody	Hu	ICC/IF, IHC-P, WB	Inner membrane
		Prohibitin antibody	Hu, Ms, Rat	ICC/IF, IHC-P, WB	Inner membrane
		VDAC1 antibody	Hu	IHC-P, WB	Outer membrane
		Cytochrome C antibody	Hu, Ms, Rat	IHC-P, WB	Matrix
		HSP60 antibody	Hu, Ms, Rat	ICC/IF, IHC-P, WB	Matrix
		Rabbit IgG antibody (HRP)	Rb	ELISA, WB	
GTX300075	Intermediate Filament Antibody Panel	Vimentin antibody	Hu, Ms, Rat	ICC/IF, IHC-P, WB	
		Desmin antibody	Hu, Ms	IHC-P, WB	
		Keratin 36 antibody	Hu	ICC/IF, IHC-P, WB	
		Rabbit IgG antibody (HRP)	Rb	ELISA, WB	

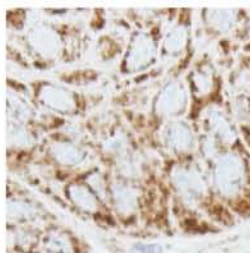
### GTX300082 Mitochondria Antibody Panel



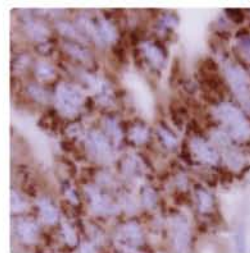
**COX4 antibody (GTX101499):**  
Confocal IF analysis of methanol-fixed HeLa cells.



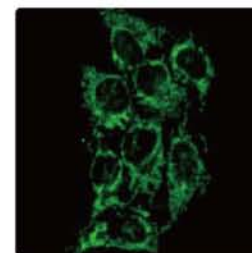
**Prohibitin antibody (GTX101105):**  
Confocal IF analysis of methanol-fixed HeLa cells.



**VDAC1 antibody (GTX114187):**  
IHC-P analysis of Cal27 xenograft.



**Cytochrome C antibody (GTX108585):**  
IHC-P analysis of colon cancer.



**HSP60 antibody (GTX110089):**  
ICC/IF analysis of methanol-fixed A431 cells.

## Epitope Tag

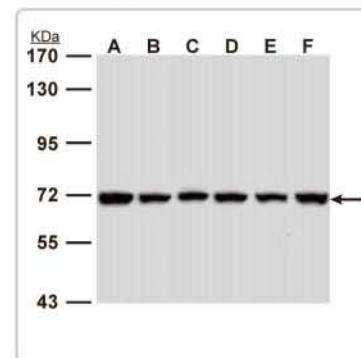
Cat. No.	Product	Content	Reactivity	Application
GTX300042	Tag Antibody Panel	6x His antibody		ELISA, IP, WB
		HA Tag antibody		ICC/IF, IP, WB
		GFP antibody		ICC/IF, IHC, IP, WB

# Cell Biology

## Apoptosis

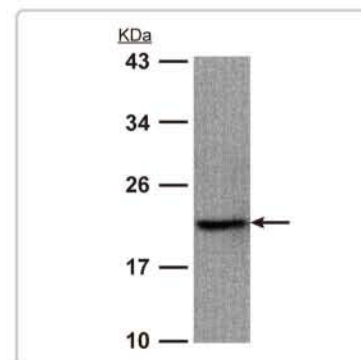
Cat. No.	Product	Content	Reactivity	Application		
GTX300026	Bcl-2 Family Antibody Panel for General Apoptosis Research	Bcl-2 antibody	Hu	FACS, ICC/IF, IHC-P, IP, WB		
		Bcl-X antibody	Hu, Ms, Rat	ICC/IF, IHC-P, WB		
		MCL1 antibody	Hu	ICC/IF, IHC-P, WB		
		Bad antibody	Hu, Ms, Rat	FACS, ICC/IF, IHC-P, IP, WB		
		Bak antibody	Hu	IHC-P, WB		
		Bax antibody	Hu, Rat	ICC/IF, WB		
		Puma antibody	Hu	FACS, ICC/IF, IHC-P, IP, WB		
		Rabbit IgG antibody (HRP)	Rb	ELISA, WB		
GTX300024	Bcl-2 Family Antibody Panel for Anti-apoptosis	Bcl-2 antibody	Hu	FACS, ICC/IF, IHC-P, IP, WB		
		Bcl-X antibody	Hu, Ms, Rat	ICC/IF, IHC-P, WB		
		BCL2L10 antibody	Hu	ICC/IF, IHC-P, WB		
		Bfl1 antibody	Hu, Ms	FACS, ICC/IF, IHC-P, WB		
		MCL1 antibody	Hu	ICC/IF, IHC-P, WB		
		Rabbit IgG antibody (HRP)	Rb	ELISA, WB		
		Bcl-X antibody	Hu, Ms, Rat	ICC/IF, IHC-P, WB		
		Bax antibody	Hu, Rat	ICC/IF, WB		
GTX300025	Bcl-2 Family Antibody Panel for Pro-apoptosis	Bak antibody	Hu	IHC-P, WB		
		Bid antibody	Hu	ICC/IF, IHC-P, WB		
		Bad antibody	Hu, Ms, Rat	FACS, ICC/IF, IHC-P, IP, WB		
		Bim antibody	Hu	ICC/IF, IHC-P, IP, WB		
		Puma antibody	Hu	FACS, ICC/IF, IHC-P, IP, WB		
		Rabbit IgG antibody (HRP)	Rb	ELISA, WB		
		Alf antibody	Hu	ICC/IF, IHC-P, WB		
		Bax antibody	Hu, Ms, Rat	IHC-P, IP, WB		
GTX300091	Pro-apoptosis Protein Antibody Panel	Bcl-XS antibody	Hu	IHC-P, WB		
		p53 antibody [D01]	Hu	IHC-Fr, IHC-P, IP, WB		
		Rabbit IgG antibody (HRP)	Rb	ELISA, WB		
		Caspase 3 antibody	Hu, Ms	ICC/IF, IHC-P, WB		
		Pro-Caspase 3 antibody	Hu, Ms	FACS, ICC/IF, IHC-P, IP, WB		
		Caspase 9 antibody	Hu	WB		
		Pro-Caspase 9 antibody	Hu, Ms	FACS, ICC/IF, IHC-P, IP, WB		
		Rabbit IgG antibody (HRP)	Rb	ELISA, WB		
GTX300059	Caspase Antibody Panel	cIAP1 antibody	Hu, Ms, Rat	WB		
		cIAP2 antibody	Hu	IHC-P, WB		
		Survivin antibody	Hu, Ms	ICC/IF, IHC-P, WB		
		XIAP antibody	Hu	ICC/IF, IHC-P, WB		
		Rabbit IgG antibody (HRP)	Rb	ELISA, WB		
		GTX300097	IAP Family Antibody Panel	cIAP1 antibody	Hu, Ms, Rat	WB
				cIAP2 antibody	Hu	IHC-P, WB
				Survivin antibody	Hu, Ms	ICC/IF, IHC-P, WB
XIAP antibody	Hu			ICC/IF, IHC-P, WB		
Rabbit IgG antibody (HRP)	Rb			ELISA, WB		

## GTX300097 IAP Family Antibody Panel



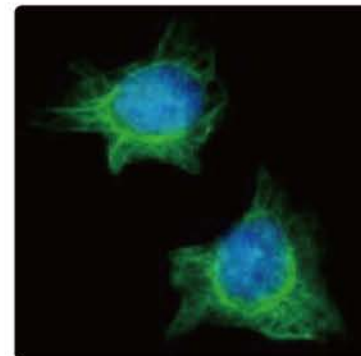
### cIAP2 antibody (GTX113128):

WB analysis of (A) 293T, (B) A431, (C) H1299, (D) HeLa, (E) HepG2, and (F) Molt-4 lysates.



### Survivin antibody (GTX100441):

WB analysis of 293T cell lysate.



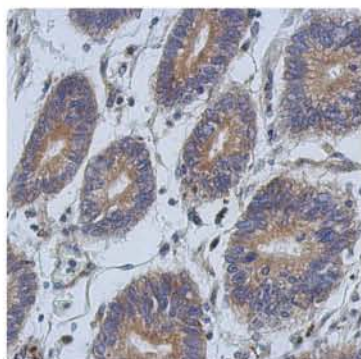
### XIAP antibody (GTX113130):

ICC/IF analysis of methanol-fixed HeLa cells.

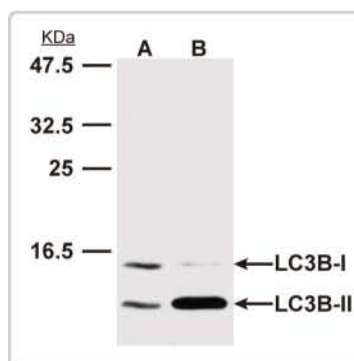
## Autophagy

Cat. No.	Product	Content	Reactivity	Application
GTX300090	Autophagy Antibody Panel	Atg12 antibody	Hu, Ms, Rat	ICC/IF, IHC-P, WB
		Beclin-1 antibody	Hu, Ms	IHC-P, WB
		LC3B antibody	Hu	ICC/IF, WB
		SQSTM1 antibody	Hu, Ms	ICC/IF, WB
		Rabbit IgG antibody (HRP)	Rb	ELISA, WB

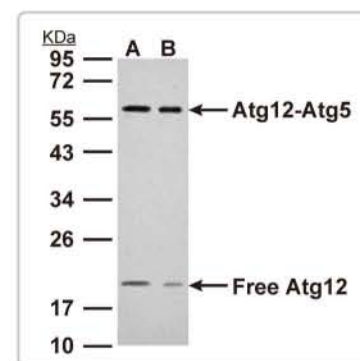
### GTX300090 Autophagy Antibody Panel



**Beclin-1 antibody (GTX113039):**  
IHC-P analysis of colon cancer.



**LC3B antibody (GTX127375):**  
WB analysis of (A) untreated and (B) Thapsipargin-treated Huh7 cells.



**Atg12 antibody (GTX124181):**  
WB analysis of (A) 293T and (B) A431 cell lysates.

## DNA Repair

Cat. No.	Product	Content	Reactivity	Application
GTX300006	ATM Signaling Antibody Panel-1	ATM antibody [2C1]	Hu, Ms, Mk, Rat	ICC/IF, IHC-P, IP, WB
		c-Abl antibody		ELISA-Ag
		c-Abl (phospho Tyr245) antibody		ELISA-Ag
		c-Jun antibody	Hu	WB
		JNK1 antibody		WB-Ag
		p73 antibody	Hu	ICC/IF, IHC-P, WB
		Rad51 antibody	Hu, Ms	ICC/IF, IHC-P, WB
		RPA32 antibody	Hu	ICC/IF, IHC-P, WB

# Cell Biology

## DNA Repair

Cat. No.	Product	Content	Reactivity	Application
GTX300008	ATM Signaling Antibody Panel-2	ATM antibody [2C1]	Hu, Ms, Mk, Rat	ICC/IF, IHC-P, IP, WB
		ATR antibody [2B5]	Hu	ICC/IF, IP, WB
		p53 antibody	Hu	ICC/IF, IHC-P, IP, WB
		MDM2 antibody	Hu, Ms	ICC/IF, IHC-P, WB
		14-3-3 $\sigma$ antibody	Hu	ICC/IF, IHC-P, WB
GTX300053	ATM Signaling Antibody Panel-3	GADD45 $\gamma$ antibody	Hu	ICC/IF, WB
		ATM antibody [2C1]	Hu, Ms, Mk, Rat	ICC/IF, IHC-P, IP, WB
		ATR antibody [2B5]	Hu	ICC/IF, IP, WB
		Chk1 antibody [6F5]	Hu	WB
		Chk2 antibody [8F12]	Hu	ICC/IF, WB
		BRCA1 antibody [8F7]	Hu	IHC-P, IP, WB
		CtIP antibody	Hu	WB
		p53 antibody	Hu	ICC/IF, IHC-P, IP, WB
GTX300009	DSB Damage Recognition- Response Protein Antibody Panel	MDM2 antibody	Hu, Ms	ICC/IF, IHC-P, WB
		Mouse IgG antibody (HRP)	Ms	ELISA, WB
		ATM antibody [2C1]	Hu, Ms, Mk, Rat	ICC/IF, IHC-P, IP, WB
		ATM (phospho Ser1981) antibody	Hu	ICC/IF, IHC-P, IP, WB
GTX300010	DSB Damage Recognition- MRN Complex Antibody Panel	Histone H2A.x (phospho Ser139) antibody	Hu, Ms, Rat	ICC/IF, IHC-M, IHC-P, WB
		TIP60 antibody	Hu	ICC/IF, WB
		Histone H2A.x (phospho Ser139) antibody	Hu, Ms, Rat	ICC/IF, IHC-P, WB
		Mre11 antibody [12D7]	Hu	ELISA, ICC/IF, IHC-P, IP, WB
		NBS1 antibody [1C3]	Hu	ICC/IF, IP, WB
GTX300011	DSB Damage Recognition- Signal Amplification Antibody Panel	Nibrin/NBS1 (phospho Ser343) antibody	Hu	ICC/IF, IP, WB
		Rad50 antibody [13B3]	Hu, Ms, Mk, Rat	ICC/IF, IP, WB
		ATM antibody [2C1]	Hu, Ms, Mk, Rat	ICC/IF, IHC-P, IP, WB
		ATM (phospho Ser1981) antibody	Hu	ICC/IF, IHC-P, IP, WB
		BRCA1 antibody [8F7]	Hu	IHC-P, IP, WB
GTX300012	RPA Family Antibody Panel	Histone H2A.x (phospho Ser139) antibody	Hu, Ms, Rat	ICC/IF, IHC-M, IHC-P, WB
		p53BP1 antibody	Hu	ICC/IF, WB
		RPA14 antibody	Hu	IHC-P, WB
		RPA32 antibody	Hu	ICC/IF, IHC-P, WB
GTX300013	Rad51 Paralog Antibody Panel	RPA70 antibody	Hu, Ms	ICC/IF, IHC-P, WB
		RAD51B antibody	Hu	WB
		RAD51C antibody	Hu, Ms	WB
GTX300014	Homologous Recombination Antibody Panel	XRCC2 antibody	Hu	WB
		XRCC3 antibody	Hu	ICC/IF, WB
		BRCA2 antibody [5F6]	Hu	IHC-Fr, WB
		Rad51 antibody [13E4]	Hu	WB
		Rad51 AP1 antibody	Hu	WB
		Rad52 antibody [5H9]	Hu	WB
		Rad54 antibody	Hu, Ms	ICC/IF, IHC-P, WB
Rad54B antibody	Hu	WB		
RPA70 antibody	Hu, Ms	ICC/IF, IHC-P, WB		

## DNA Repair

Cat. No.	Product	Content	Reactivity	Application		
GTX300015	Fanconi Anaemia Pathway Antibody Panel	BRCA2 antibody [5F6]	Hu	IHC-Fr, WB		
		FANCA antibody	Hu	ICC/IF, IHC-P, WB		
		FANCC antibody	Hu, Ms	ICC/IF, IHC-P, WB		
		FANCD2 antibody	Hu	IHC-P, WB		
		FANCG antibody	Hu, Ms	ICC/IF, WB		
		FANCI antibody	Hu	ICC/IF, WB		
		FANCL antibody	Hu	WB		
GTX300016	Non-homologous End Joining Antibody Panel-1	ATM antibody [2C1]	Hu, Ms, Mk, Rat	ICC/IF, IHC-P, IP, WB		
		ATM (phospho Ser1981) antibody [EP1890Y]	Hu	ICC/IF, IHC-P, IP, WB		
		Histone H2A.x (phospho Ser139) antibody	Hu, Ms, Rat	ICC/IF, IHC-M, WB		
		Ku70 antibody	Hu	ICC/IF, IHC-P, WB		
		Ku80 antibody [149.8]	Hu	WB		
		Artemis antibody	Hu	IHC-P, WB		
		DNA ligase IV antibody	Hu	WB		
GTX300017	Non-homologous End Joining Antibody Panel-2	DNA-PKcs antibody	Hu	WB		
		Histone H2A.x (phospho Ser139) antibody	Hu, Ms, Rat	ICC/IF, IHC-M, IHC-P, WB		
		XLFI antibody	Hu	WB		
		XRCC4 antibody	Hu	ICC/IF, IHC-P, WB		
		ATM (phospho Ser1981) antibody	Hu	ICC/IF, IHC-P, IP, WB		
		Histone H2A.x (phospho Ser139) antibody	Hu, Ms, Rat	ICC/IF, IHC-M, IHC-P, WB		
		Ku70 antibody	Hu	ICC/IF, IHC-P, WB		
GTX300018	DSB Relative Repair Antibody Panel	Ku80 antibody [149.8]	Hu	WB		
		Mre11 antibody [12D7]	Hu	ELISA, ICC/IF, IHC-P, IP, WB		
		NBS1 antibody [1C3]	Hu	ICC/IF, IP, WB		
		Rad50 antibody [13B3]	Hu, Ms, Mk, Rat	ICC/IF, IP, WB		
		HMGB1 antibody	Hu, Ms	IHC-P, WB		
		MLH1 antibody	Hu	ICC/IF, WB		
		PCNA antibody	Hu, Ms, Rat	ICC/IF, IHC-P, WB		
GTX300019	Mismatch Repair Antibody Panel	PMS2 antibody	Hu	WB		
		RFC2 antibody	Hu	WB		
		RFC4 antibody	Hu, Ms	ICC/IF, IHC-P, WB		
		APE1 antibody	Hu	ICC/IF, WB		
		DNA ligase I antibody	Hu	WB		
		DNA pol $\delta$ antibody	Hu	ICC/IF, WB		
		FEN1 antibody	Hu	ICC/IF, IHC-P, WB		
GTX300020	Base Excision Repair Antibody Panel-1	HMGB1 antibody	Hu, Ms	IHC-P, WB		
		PARP1 antibody	Hu	ICC/IF, IHC-P, WB		
		PCNA antibody	Hu, Ms, Rat	ICC/IF, IHC-P, WB		
		APE1 antibody	Hu	ICC/IF, WB		
		DNA ligase III antibody	Hu	ICC/IF, IHC-P, WB		
		PARP1 antibody	Hu	ICC/IF, IHC-P, WB		
		PNK antibody	Hu	WB		
GTX300021	Base Excision Repair Antibody Panel-2	XRCC1 antibody	Hu	ICC/IF, IHC-P, WB		
		CSA antibody	Hu, Ms	ICC/IF, WB		
		CSB antibody	Hu	ICC/IF, IHC-P, WB		
		DDB1 antibody	Hu, Ms	ICC/IF, IHC-P, WB		
		XPC antibody [3.26]	Hu	ICC/IF, IHC-P, WB		
		ERCC1 antibody	Hu	WB		
		POLH antibody	Hu	IHC-P, WB		
GTX300022	Nucleotide Excision Repair Antibody Panel-1	RPA70 antibody	Hu, Ms	ICC/IF, IHC-P, WB		
		XPA antibody	Hu	ICC/IF, IHC-P, WB		
		XPB antibody	Hu	ICC/IF, WB		
		XPC antibody [3.26]	Hu	ICC/IF, IHC-P, WB		
		XPD antibody	Hu	IHC-P, WB		
		GTX300023	Nucleotide Excision Repair Antibody Panel-2	XPA antibody	Hu	ICC/IF, IHC-P, WB
				XPB antibody	Hu	ICC/IF, WB
XPC antibody [3.26]	Hu			ICC/IF, IHC-P, WB		
XPD antibody	Hu			IHC-P, WB		

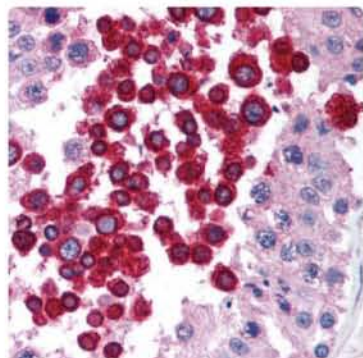


# Cell Biology

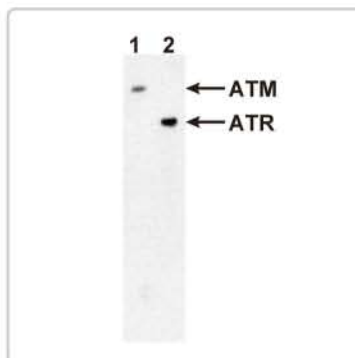
## DNA Repair

Cat. No.	Product	Content	Reactivity	Application
GTX300030	Chk1/2 Antibody Panel	Chk1 antibody	Hu	ICC/IF, IHC-P, WB
		Chk1 (phospho Ser345) antibody	Hu	ICC/IF, IHC-P, WB
		Chk2 antibody [8F12]	Hu	ICC/IF, WB
		Chk2 (phospho Thr68) antibody	Hu	IP, WB
		Chk2 (phospho Ser33/35) antibody	Hu	ICC/IF, WB
GTX300031	9-1-1 Complex Antibody Panel	FEN1 antibody	Hu	ICC/IF, IHC-P, WB
		HUS1 antibody	Hu	IHC-P, WB
		PCNA antibody	Hu, Ms, Rat	ICC/IF, IHC-P, WB
		Rad1 antibody	Hu, Ms	WB
		Rad9 antibody	Hu	ICC/IF, WB
		Rad17 antibody	Hu, Ms	IHC-P, WB

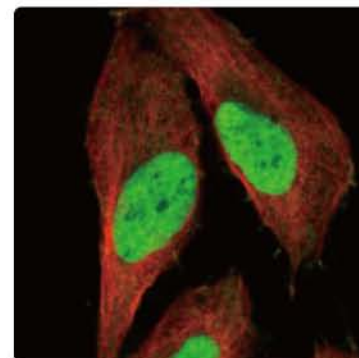
### GTX300008 ATM Signaling Antibody Panel-2



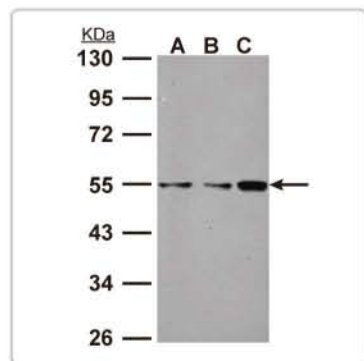
**ATM antibody [2C1] (GTX70103):**  
IHC-P analysis of human testis tissue.



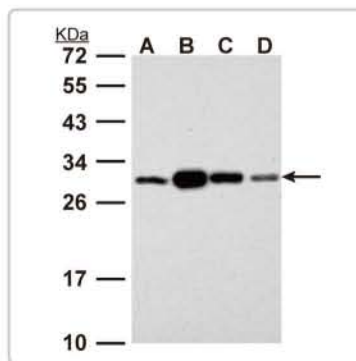
**ATR antibody [2B5] (GTX70109):**  
WB analysis of Raji cell lysate using ATM (GTX70103) and ATR (GTX70109) antibodies.



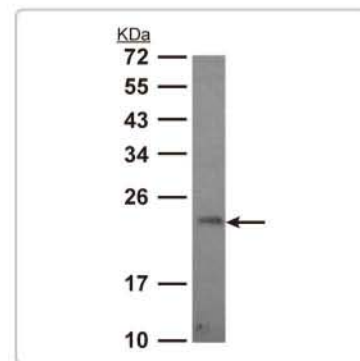
**p53 antibody (GTX102965):**  
ICC/IF analysis of PFA-fixed U2OS cells.



**MDM2 antibody (GTX100653):**  
WB analysis of (A) NIH-3T3, (B) JC and (C) BCL-1 cell lysates.



**14-3-3  $\sigma$  antibody (GTX100289):**  
WB analysis of (A) 293T, (B) A431, (C) HeLa and (D) HepG2 cell lysates.

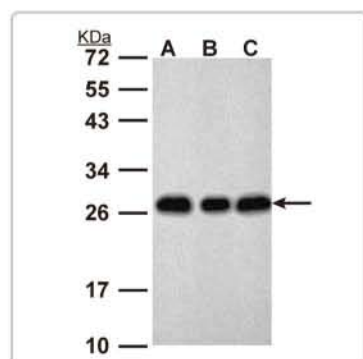


**GADD45 $\gamma$  antibody (GTX108257):**  
WB analysis of HeLa cell lysate.

## EMT

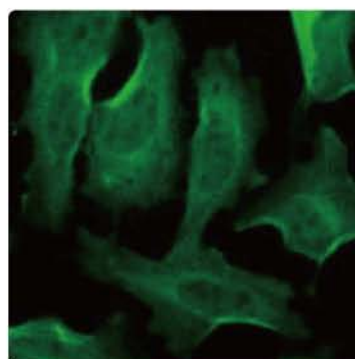
Cat. No.	Product	Content	Reactivity	Application
GTX300096	EMT Antibody Panel	Twist antibody	Hu	WB
		Fibronectin antibody	Hu	ICC/IF, WB
		Vimentin antibody	Hu, Ms, Rat	ICC/IF, IHC-P, WB
		E-Cadherin antibody	Hu	ICC/IF, IHC-P, IP, WB
		EpCAM antibody	Hu, Ms, Rat	WB
		Rabbit IgG antibody (HRP)	Rb	ELISA, WB

### GTX300096 EMT Antibody Panel



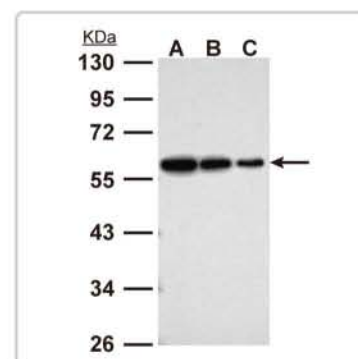
**Twist antibody (GTX127310):**

WB analysis of (A) Raji, (B) THP-1 and (C) HL-60 cell lysates.



**Fibronectin antibody (GTX112794):**

ICC/IF analysis of PFA-fixed HeLa cells.



**Vimentin antibody (GTX100619):**

WB analysis of (A) 293T, (B) 293T and (C) 293T cell lysates.

## Hypoxia

Cat. No.	Product	Content	Reactivity	Application
GTX300061	Hypoxia Antibody Panel	HIF-1 $\alpha$ antibody	Hu, Ms	ChIP, ICC/IF, IP, WB
		HIF-2 $\alpha$ antibody	Hu	IHC-P, WB
		ARD1 antibody	Hu, Ms	ICC/IF, IHC-P, WB
		HO-1 antibody	Hu, Ms	IHC-P, WB
		NF $\kappa$ B p105/p50 antibody	Hu, Ms	ChIP, ICC/IF, IHC-P, WB
		Twist antibody	Hu	WB
		Rabbit IgG antibody (HRP)	Rb	ELISA, WB

# Cell Biology

## HSP / Chaperone

Cat. No.	Product	Content	Reactivity	Application
GTX300084	HSP / Chaperone Antibody Panel	HSP40 antibody	Hu	WB
		HSP60 antibody	Hu, Ms, Rat	ICC/IF, IHC-P, WB
		HSP70 1A antibody	Hu, Ms, Rat	ICC/IF, IHC-P, IP, WB
		Grp78 antibody	Hu, Ms	IHC-P, WB
		HSP90 $\alpha$ antibody	Hu, Rat	ICC/IF, IHC-P, IP, WB
		HSP90 $\beta$ antibody	Hu, Ms, Rat	ICC/IF, IHC-P, WB
		Rabbit IgG antibody (HRP)	Rb	ELISA, WB

## NOX

Cat. No.	Product	Content	Reactivity	Application
GTX300055	NOX Family Antibody Panel	NOX1 antibody	Hu, Ms	WB
		NOX2 antibody	Hu, Ms, Rat	WB
		NOX4 antibody	Hu	ICC/IF, IHC-P, WB
		Rabbit IgG antibody (HRP)	Rb	ELISA, WB
GTX300056	NOX1 Complex Antibody Panel	NOX1 antibody	Hu, Ms	WB
		NCF1 antibody	Hu	ICC/IF, IHC-P, WB
		NCF2 antibody	Hu, Ms, Rat	ICC/IF, IHC-M, IHC-P, IP, WB
		NOXO1 antibody	Hu	WB
		Cytochrome B245 Light Chain antibody	Hu	ELISA, FACS, IHC-Fr, IP, WB
		Rabbit IgG antibody (HRP)	Rb	ELISA, WB
		NOX2 antibody	Hu, Ms, Rat	WB
GTX300057	NOX2 Complex Antibody Panel	NCF1 antibody	Hu	ICC/IF, IHC-P, WB
		NCF2 antibody	Hu, Ms, Rat	ICC/IF, IHC-M, IHC-P, IP, WB
		Cytochrome B245 Light Chain antibody	Hu	ELISA, FACS, IHC-Fr, IP, WB
		RAC1 antibody	Hu, Ms	IHC-P, WB
		Rabbit IgG antibody (HRP)	Rb	ELISA, WB
		Rabbit IgG antibody (HRP)	Rb	ELISA, WB

## PAK1

Cat. No.	Product	Content	Reactivity	Application
GTX300078	PAK1 Antibody Panel	PAK1 antibody	Hu, Ms, Rat	ICC/IF, IHC-P, WB
		PAK1 (phospho Ser144) antibody	Hu, Ms, Rat	ICC/IF, IHC-P, IP, WB
		PAK1 (phospho Ser20) antibody	Hu	IP, WB
		Rabbit IgG antibody (HRP)	Rb	ELISA, WB

## Vimentin

Cat. No.	Product	Content	Reactivity	Application
GTX300077	Vimentin Antibody Panel	Vimentin antibody	Hu, Ms, Rat	ICC/IF, IHC-P, WB
		Vimentin (phospho Ser38) antibody	Hu, Ms, Rat	WB
		Vimentin (phospho Ser72) antibody	Hu, Ms, Rat	IP, WB
		Vimentin (phospho Ser82) antibody	Hu, Ms, Rat	WB
		Rabbit IgG antibody (HRP)	Rb	ELISA, WB

# Epigenetics

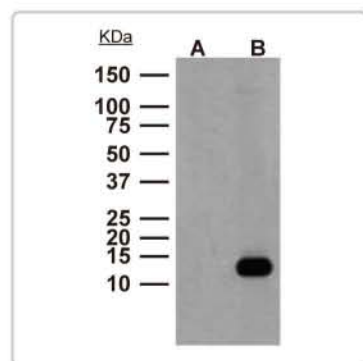
## DNA Methylation

Cat. No.	Product	Content	Reactivity	Application
GTX300094	DNA Methyltransferases Antibody Panel	DNMT1 antibody	Hu	ICC/IF, IHC-P, WB
		DNMT3a antibody	Hu	IP, WB
		DNMT3b antibody	Hu, Ms, Rat	ICC/IF, WB
		Rabbit IgG antibody (HRP)	Rb	ELISA, WB

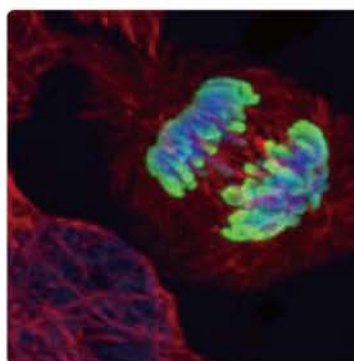
## Histone Modification

Cat. No.	Product	Content	Reactivity	Application
GTX300092	Acetyl-Histone H3 Antibody Panel	Histone H3 antibody	Hu, Mk	IHC-P, WB
		Histone H3 (acetyl Lys 9, Lys14) antibody	Hu, Ms	WB
		Histone H3 (acetyl Lys14) antibody	Hu, Rat	ICC/IF, IHC-P, IP, WB
		Histone H3 (acetyl Lys56) antibody	Hu, Ms, Rat	ICC/IF, IHC-P, WB
		Rabbit IgG antibody (HRP)	Rb	ELISA, WB
GTX300093	Methyl-Histone H3 Antibody Panel	Histone H3 antibody	Hu, Mk	IHC-P, WB
		Histone H3 (di-Methyl Lys4) antibody	Hu	ChIP, ICC/IF, IHC-P, IP, WB
		Histone H3 (tri-Methyl Lys9) antibody	Hu	WB
		Histone H3 (tri-Methyl Lys27) antibody	Hu	ICC/IF, IHC-P, WB
		Rabbit IgG antibody (HRP)	Rb	ELISA, WB
GTX300095	Phospho-Histone H3 Antibody Panel	Histone H3 antibody	Hu, Mk	IHC-P, WB
		Histone H3 (phospho Thr3) antibody	Hu	ICC/IF, IHC-P, WB
		Histone H3 (phospho Ser10) antibody	Hu, Ms	ICC/IF, IHC-P, WB
		Histone H3 (phospho Ser28) antibody	Hu, Ms	ICC/IF, IHC-M, IHC-P, WB
		Rabbit IgG antibody (HRP)	Rb	ELISA, WB

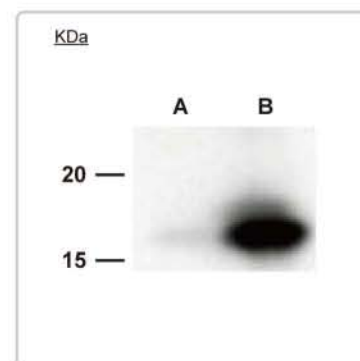
### GTX300095 Phospho-Histone H3 Antibody Panel



**Histone H3 (phospho Thr3) antibody (GTX61749):** WB analysis on (A) untreated and (B) FBS/Calyculin A-treated HeLa cell lysates.



**Histone H3 (phospho Ser10) antibody (GTX128116):** Confocal IF analysis of PFA-fixed HeLa cells using GTX128116 (green).



**Histone H3 (phospho Ser28) antibody (GTX61104):** WB analysis of (A) untreated and (B) FBS/Calyculin A-treated NIH3T3 cell lysates.

# Epigenetics

## Histone Modifying Enzyme

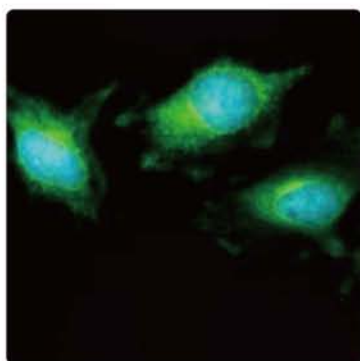
Cat. No.	Product	Content	Reactivity	Application
GTX300088	HDAC Antibody Panel	HDAC1 antibody	Hu, Ms	ChIP, ICC/IF, IHC-P, IP, WB
		HDAC2 antibody	Hu, Ms, Rat	ICC/IF, IHC-P, IP, WB
		HDAC3 antibody	Hu	ChIP, IHC-P, WB
		HDAC6 antibody	Hu	ICC/IF, WB
		HDAC8 antibody	Hu, Ms, Rat	WB
		HDAC11 antibody	Hu, Ms	IHC-P, WB
GTX300065	ChIP-grade HDAC Antibody Panel	Rabbit IgG antibody (HRP)	Rb	ELISA, WB
		HDAC1 antibody	Hu, Ms	ChIP, ICC/IF, IHC-P, IP, WB
		HDAC2 antibody	Hu, Ms, Rat	ICC/IF, IHC-P, IP, WB
		HDAC3 antibody	Hu	ChIP, IHC-P, WB
		Rabbit IgG antibody (HRP)	Rb	ELISA, WB
		EED antibody	Hu	ICC/IF, IHC-P, WB
GTX300058	EED-EZH2 / PRC2 Complex Antibody Panel	EZH2 antibody	Hu	WB
		HDAC2 antibody	Hu, Ms, Rat	ICC/IF, IHC-P, IP, WB
		HDAC1 antibody	Hu, Ms	ChIP, ICC/IF, IHC-P, IP, WB
		Rabbit IgG antibody (HRP)	Rb	ELISA, WB

# Immunology

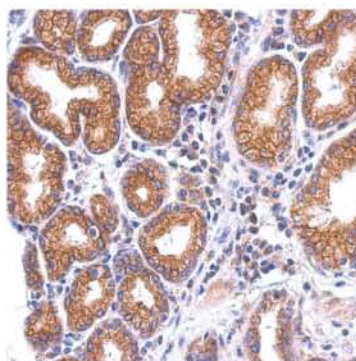
Cat. No.	Product	Content	Reactivity	Application
GTX300074	CCL5/CCR5 Axis Antibody Panel	CCL5 antibody	Hu	WB
		CCR5 antibody	Hu	IHC-P, WB
		Rabbit IgG antibody (HRP)	Rb	ELISA, WB
GTX300054	CXCL13 / CXCR5 Pair Antibody Panel	CXCL13 antibody	Hu	IHC-P, WB
		CXCR5 antibody	Hu	IHC-P, WB
		Rabbit IgG antibody (HRP)	Rb	ELISA, WB
		TRAF1 antibody	Hu	IHC-P, WB
		TRAF2 antibody	Hu	ICC/IF, IHC-P, WB
GTX300073	TRAF Antibody Panel	TRAF3 antibody	Hu	ICC/IF, WB
		TRAF5 antibody	Hu	ICC/IF, WB
		TRAF6 antibody	Hu, Ms	ICC/IF, IHC-P, WB
		Rabbit IgG antibody (HRP)	Rb	ELISA, WB

Cat. No.	Product	Content	Reactivity	Application
GTX300067	TLR Antibody Panel- intracellular epitope	TLR3 antibody	Hu	ICC/IF, IHC-P, WB
		TLR7 antibody	Hu	IHC-P, WB
		TLR9 antibody	Hu	IHC-P, WB
		Rabbit IgG antibody (HRP)	Rb	ELISA, WB
GTX300068	TLR Antibody Panel- extracellular epitope	TLR1 antibody	Hu	FACS, IP, WB
		TLR2 antibody	Hu	ICC/IF, WB
		TLR4 antibody	Hu	IHC-P, WB
		TLR5 antibody	Hu	IHC-P, WB
GTX300076	MHC Class I Antibody Panel	Rabbit IgG antibody (HRP)	Rb	ELISA, WB
		HLA-A antibody	Hu	WB
		HLA-B antibody	Hu	IHC-P, WB
		HLA-C antibody	Hu, Ms, Rat	IP, WB
GTX300085	T Cell Signaling Antibody Panel	HLA-E antibody	Hu	IHC-P, WB
		HLA-G antibody	Hu	IHC-P
		ZAP70 antibody	Hu	IHC-P, WB
		ZAP70 (phospho Tyr292) antibody	Hu	FACS, ICC/IF, WB
		SLP-76 antibody	Hu, Ms, Rat	ICC/IF, IHC-P, WB
		SLP-76 (phospho Tyr145) antibody	Hu	FACS, ICC/IF, WB
		LAT antibody	Hu	FACS, IHC-P, IP, WB
		LAT (phospho Tyr191) antibody	Hu, Ms, Rat	ICC/IF, IHC-P, IP, WB
		Lck antibody	Hu, Ms	WB
		Lck (phospho Tyr505) antibody	Hu, Ms	WB
		Syk antibody	Hu, Ms	ICC/IF, IHC-P, WB
		Syk (phospho Tyr525/526) antibody	Hu	ICC/IF, WB
GTX300086	B Cell Signaling Antibody Panel	Lyn antibody	Hu	ICC/IF, IHC-P, WB
		Lyn (phospho Tyr396) antibody	Hu	FACS, WB
		Blk antibody	Hu	IHC-P, WB
		Blk (phospho Tyr223) antibody	Hu	IP, WB
		CD19 antibody	Hu	WB
		Rabbit IgG antibody (HRP)	Rb	ELISA, WB

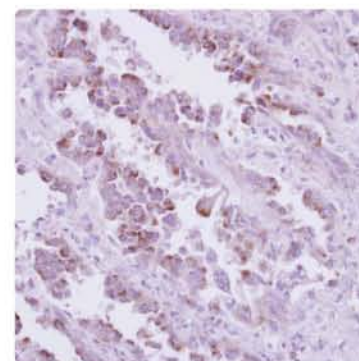
### GTX300068 TLR Antibody Panel- Intracellular domain



**TLR3 antibody (GTX113022):**  
ICC/IF analysis of methanol-fixed HeLa cells.



**TLR7 antibody (GTX125910):**  
IHC-P analysis of colon carcinoma.



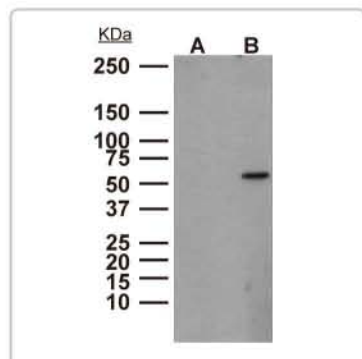
**TLR9 antibody (GTX100726):**  
IHC-P analysis of lung cancer.

# Signaling

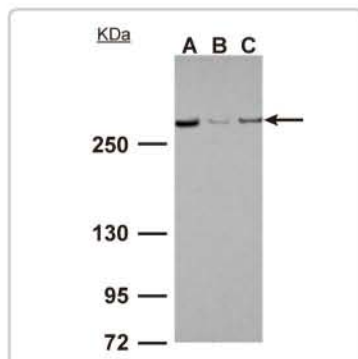
## PI3K-Akt-mTOR Pathway

Cat. No.	Product	Content	Reactivity	Application
GTX300032	PI3K-Akt Pathway Antibody Panel	Akt1/2/3 antibody	Hu, Ms, Rat	ICC/IF, IHC-P, WB
		Akt1 (phospho Ser473) antibody	Hu, Ms	ICC/IF, IHC-P, WB
		PTEN antibody	Hu, Ms	ICC/IF, IHC-P, WB
		PTEN (phospho Thr366/Ser370) antibody	Hu	ICC/IF, IHC-P, IP, WB
		PI3K p110 $\alpha$ antibody	Hu, Ms	IHC-P, WB
		PDK1 (phospho Ser241) antibody	Hu, Ms, Rat	ICC/IF, IHC-P, IP, WB
		Rabbit IgG antibody (HRP)	Rb	ELISA, WB
GTX300089	AKT-GSK3 $\beta$ Pathway Antibody Panel	Akt1/2/3 antibody	Hu, Ms, Rat	ICC/IF, IHC-P, WB
		Akt1/2/3 (phospho Ser473/474/472) antibody	Hu	WB
		GSK3 $\beta$ antibody	Hu, Ms	ICC/IF, IHC-P, WB
		GSK3 $\beta$ (phospho Ser9) antibody	Hu	ICC/IF, IHC-P, WB
		Rabbit IgG antibody (HRP)	Rb	ELISA, WB
GTX300033	Akt-mTOR Pathway Antibody Panel	Akt1/2/3 antibody	Hu, Ms, Rat	ICC/IF, IHC-P, WB
		Akt1 (phospho Ser473) antibody	Hu, Ms	ICC/IF, IHC-P, WB
		mTOR antibody	Hu, Ms, Rat	IHC-P, WB
		mTOR (phospho Ser2448) antibody	Hu	ICC/IF, IHC-P, WB
		Rabbit IgG antibody (HRP)	Rb	ELISA, WB
GTX300034	mTOR Inhibitor Antibody Panel	AMPK $\beta$ 1 antibody	Hu	IHC-P, WB
		AMPK $\beta$ 1 (phospho Ser181) antibody	Hu	ICC/IF, IHC-P, WB
		LKB1 antibody	Hu	ICC/IF, WB
		PTEN antibody	Hu, Ms	ICC/IF, IHC-P, WB
		PTEN (phospho Thr366/Ser370) antibody	Hu	ICC/IF, IHC-P, IP, WB
		Rabbit IgG antibody (HRP)	Rb	ELISA, WB

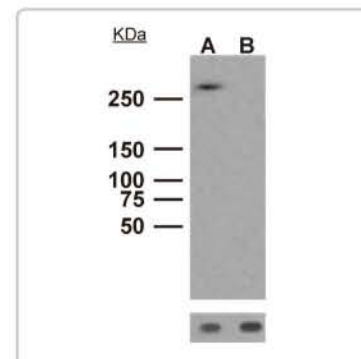
### GTX300033 Akt-mTOR Pathway Antibody Panel



**AKT1 (phospho Ser473) antibody (GTX61708):**  
WB analysis of (A) untreated and (B) PDGF-treated 3T3 cells.



**mTOR antibody (GTX101557):**  
WB analysis of (A) 293T, (B) A431 and (C) HeLa cell lysates.

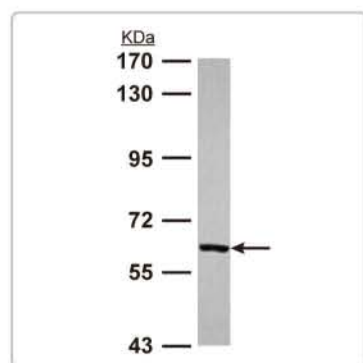


**mTOR (phospho Ser2448) antibody (GTX62472):**  
WB analysis of (A) untreated and (B) AP-treated 293T cells.

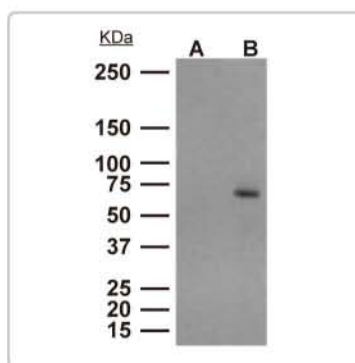
## NFkB Pathway

Cat. No.	Product	Content	Reactivity	Application
GTX300069	NFkB p65 Antibody Panel	NFkB p65 antibody	Hu	ICC/IF, IHC-P, WB
		NFkB p65 (phospho Ser536) antibody	Hu	IP, WB
		NFkB p65 (phospho Ser529) antibody	Hu	FACS, IP, WB
		Rabbit IgG antibody (HRP)	Rb	ELISA, WB
GTX300070	NF-kB Pathway Antibody Panel	NFkB p65 antibody	Hu	ICC/IF, IHC-P, WB
		NFkB p65 (phospho Ser536) antibody	Hu	IP, WB
		IKK $\alpha$ antibody	Hu, Ms, Rat	FACS, ICC/IF, IHC-P, IP, WB
		IKK $\beta$ antibody	Hu, Rat	ICC/IF, IHC-P, WB
		IKK $\gamma$ antibody	Hu, Ms	ICC/IF, IHC-P, WB
		IKB $\alpha$ antibody	Hu, Ms	ICC/IF, IHC-P, WB
		Rabbit IgG antibody (HRP)	Rb	ELISA, WB
		IKK $\alpha$ antibody	Hu, Ms, Rat	FACS, ICC/IF, IP, WB
GTX300080	IKK Isoform Antibody Panel	IKK $\beta$ antibody	Hu	WB
		IKK $\gamma$ antibody	Hu, Ms	ICC/IF, IHC-P, WB
		IKK $\epsilon$ antibody	Hu	FACS, ICC/IF, IHC, WB
		Rabbit IgG antibody (HRP)	Rb	ELISA, WB

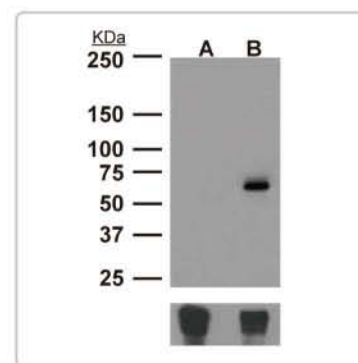
### GTX300069 NFkB p65 Antibody Panel



**NFkB p65 antibody (GTX102090):**  
WB analysis of HepG2 cell lysates.



**NFkB p65 (phospho Ser536) antibody (GTX61804):**  
WB analysis of (A) untreated and (B) TNF $\alpha$ /Calyculin A-treated Daudi cells.



**NFkB p65 (phospho Ser529) antibody (GTX62421):**  
WB analysis of (A) untreated and (B) TNF $\alpha$ /Calyculin A-treated Daudi cells.



# Signaling

## Wnt Pathway

Cat. No.	Product	Content	Reactivity	Application
GTX300037	Wnt/ $\beta$ -Catenin-GSK3 $\beta$ Pathway Antibody Panel	$\beta$ -Catenin antibody	Hu, Ms, Rat	ICC/IF, IHC-P, WB
		$\beta$ -Catenin (phospho Thr41/Thr45) antibody	Hu	IP, WB
		GSK3 $\beta$ antibody	Hu, Ms	ICC/IF, IHC-P, WB
		GSK3 $\beta$ (phospho Ser9) antibody	Hu	ICC/IF, IHC-P, WB
		HDAC1 antibody	Hu, Ms	ChIP, ICC/IF, IHC-P, IP, WB
		Rabbit IgG antibody (HRP)	Rb	ELISA, WB
		Frizzled-1 antibody	Hu	WB
GTX300038	Wnt/ $\beta$ -Catenin-Frizzled-1 Pathway Antibody Panel	Dishevelled-2 antibody	Hu	IHC-P, WB
		Dishevelled-3 antibody	Hu	ICC/IF, IHC-P, WB
		$\beta$ -Catenin antibody	Hu, Ms, Rat	ICC/IF, IHC-P, WB
		Axin-1 antibody	Hu	WB
		Axin-2 antibody	Hu, Ms, Rat	IP, WB
		HDAC1 antibody	Hu, Ms	ChIP, ICC/IF, IHC-P, IP, WB
		Rabbit IgG antibody (HRP)	Rb	ELISA, WB
		LRP6 antibody		WB-Ag
		LRP6 (phospho Ser1490) antibody	Hu	ICC/IF, WB
		Frizzled-1 antibody	Hu	WB
GTX300039	Wnt/ $\beta$ -Catenin-LRP6 Pathway Antibody Panel	$\beta$ -Catenin antibody	Hu, Ms, Rat	ICC/IF, IHC-P, WB
		Axin-1 antibody	Hu	WB
		Axin-2 antibody	Hu, Ms, Rat	IP, WB
		Rabbit IgG antibody (HRP)	Rb	ELISA, WB

## Raf, Hedgehog & STAT

Cat. No.	Product	Content	Reactivity	Application
GTX300083	Raf Family Antibody Panel	A-Raf antibody	Hu, Ms	ICC/IF, IHC-P, WB
		B-Raf antibody	Hu	WB
		RAF1 antibody	Hu	ICC/IF, IHC-P, WB
		Rabbit IgG antibody (HRP)	Rb	ELISA, WB
GTX300071	Hedgehog Signal Pathway Antibody Panel	Dhh antibody	Hu	WB
		Shh antibody	Hu	FACS, IHC-P, IP, WB
		Ihh antibody	Hu, Ms, Rat	IHC-P, IP, WB
		Rabbit IgG antibody (HRP)	Rb	ELISA, WB
		STAT1 antibody	Hu	ICC/IF, WB
		STAT2 antibody	Hu	IHC-P, IP, WB
GTX300072	STAT Antibody Panel	STAT3 antibody	Hu, Ms, Rat	ICC/IF, WB
		STAT4 antibody	Hu	FACS, ICC/IF, IHC-P, IP, WB
		STAT5A antibody	Hu	ICC/IF, WB
		STAT5B antibody	Hu	ICC/IF, WB
		STAT6 antibody	Hu, Ms	ChIP, IHC-P, IP, WB
		Rabbit IgG antibody (HRP)	Rb	ELISA, WB

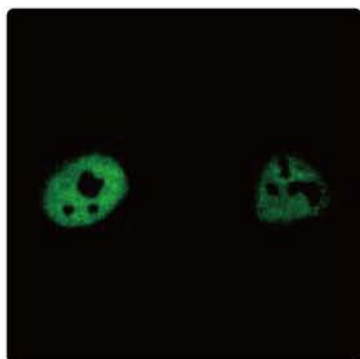
# Stem Cells & Cell Type Markers

## iPSC

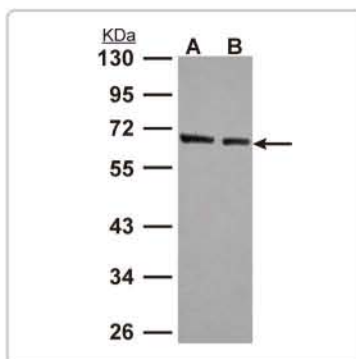
Cat. No.	Product	Content	Reactivity	Application
GTX300027	iPSC Antibody Panel-1	c-Myc antibody	Hu, Ms	FACS, ICC/IF, WB
		KLF4 antibody	Hu, Ms	FACS, WB
		Lin28 antibody	Hu, Ms	FACS, IHC-P, WB
		Nanog antibody	Hu, Ms	ELISA, IC/IF, WB
		Oct4 antibody	Hu, Ms	FACS, ICC/IF, IP, WB
		Sox2 antibody	Hu, Ms	FACS, ICC/IF, IHC-P, WB
		Rabbit IgG antibody (HRP)	Rb	ELISA, WB
GTX300062	iPSC Antibody Panel-2	c-Myc antibody [GT168]	Hu	FACS, IHC-P, WB
		KLF4 antibody	Hu, Ms	FACS, WB
		Lin28 antibody [GT1086]	Hu	FACS, IHC-P, WB
		Nanog antibody [GT3312]	Hu, Ms	FACS, WB
		Oct4 antibody [GT486]	Hu, Ms	FACS, IHC-P, IP, WB
		Sox2 antibody [GT1876]	Hu, Zfish	FACS, WB
		Mouse IgG antibody (HRP)	Ms	ELISA, WB
GTX300028	iPSC- Thomson Factor Antibody Panel-1	Lin28 antibody	Hu, Ms	FACS, IHC-P, WB
		Nanog antibody	Hu, Ms	ELISA, IC/IF, WB
		Oct4 antibody	Hu, Ms	FACS, ICC/IF, IP, WB
		Sox2 antibody	Hu, Ms	FACS, ICC/IF, IHC-P, WB
		SSEA-4 antibody	Hu, Ms, Ch, Dog, Mk, Rb	FACS, ICC/IF, IHC, IP, WB
		Rabbit IgG antibody (HRP)	Rb	ELISA, WB
		Lin28 antibody [GT1086]	Hu	FACS, IHC-P, WB
GTX300063	iPSC- Thomson Factor Antibody Panel-2	Nanog antibody [GT3312]	Hu, Ms	FACS, WB
		Oct4 antibody [GT486]	Hu, Ms	FACS, IHC-P, IP, WB
		Sox2 antibody [GT1876]	Hu, Zfish	FACS, WB
		Mouse IgG antibody (HRP)	Ms	ELISA, WB
		c-Myc antibody	Hu, Ms	FACS, ICC/IF, WB
		KLF4 antibody	Hu, Ms	FACS, WB
		Oct4 antibody	Hu, Ms	FACS, ICC/IF, IP, WB
GTX300029	iPSC- Yamanaka Factor Antibody Panel-1	Sox2 antibody	Hu, Ms	FACS, ICC/IF, IHC-P, WB
		SSEA-4 antibody	Hu, Ms, Ch, Dog, Mk, Rb	FACS, ICC/IF, IHC, IP, WB
		Rabbit IgG antibody (HRP)	Rb	ELISA, WB
		c-Myc antibody [GT168]	Hu	FACS, IHC-P, WB
		KLF4 antibody	Hu, Ms	FACS, WB
		Oct4 antibody	Hu, Ms	FACS, ICC/IF, IP, WB
		Sox2 antibody	Hu, Ms	FACS, ICC/IF, IHC-P, WB
GTX300064	iPSC- Yamanaka Factor Antibody Panel-2	SSEA-4 antibody	Hu, Ms, Ch, Dog, Mk, Rb	FACS, ICC/IF, IHC, IP, WB
		Rabbit IgG antibody (HRP)	Rb	ELISA, WB
		c-Myc antibody [GT168]	Hu	FACS, IHC-P, WB
		KLF4 antibody	Hu, Ms	FACS, WB
		Oct4 antibody [GT486]	Hu, Ms	FACS, IHC-P, IP, WB
		Sox2 antibody [GT1876]	Hu, Zfish	FACS, WB
		Mouse IgG antibody (HRP)	Ms	ELISA, WB

Quality Antibodies • Quality Results

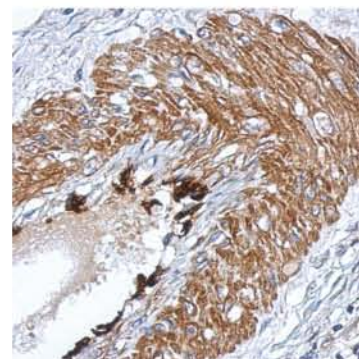
## GTX300027 iPSC Antibody Panel-1



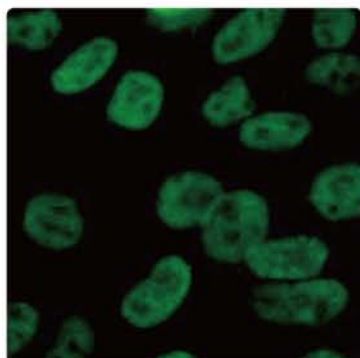
**c-Myc antibody (GTX109636):**  
ICC/IF analysis of PFA-fixed HeLa cells.



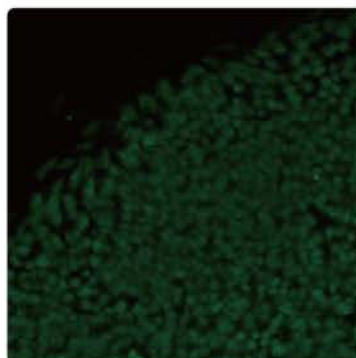
**KLF4 antibody (GTX101508):**  
WB analysis of (A) A549 and (B) HeLa cell lysates.



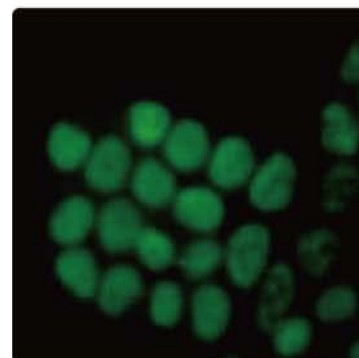
**Lin28 antibody (GTX121923):**  
IHC-P analysis of gastric cancer.



**Nanog antibody (GTX100863):**  
ICC/IF analysis of PFA-fixed hESCs.



**Oct4 antibody (GTX100622):**  
ICC/IF analysis of PFA-fixed hESCs.



**Sox2 antibody (GTX101507):**  
ICC/IF analysis of PFA-fixed mESCs.

## Neural &amp; Pancreatic Cell Markers

Cat. No.	Product	Content	Reactivity	Application	Marker
GTX300066	Neuronal Marker Antibody Panel	MAP2 antibody	Hu, Ms	IHC-P, WB	Dendrite
		Synaptophysin antibody	Hu, Ms, Rat	WB	Pre-synapse
		VAMP1 antibody	Hu	IHC-P, WB	Pre-synapse
		PSD95 antibody	Hu, Ms, Rat	FACS, ICC/IF, IP, WB	Post-synapse
GTX300081	Neuronal & Glial Marker Antibody Panel	GAP43 antibody	Hu, Ms, Rat	ICC/IF, IHC-P, WB	Neuron
		PGP9.5 antibody	Hu, Ms, Rat	ICC/IF, IHC-P, WB	Neuron
		GFAP antibody	Ms, Rat	IHC-Fr, WB	Astrocyte
		Iba1 antibody	Hu	IHC-P, WB	Microglia
		Rabbit IgG antibody (HRP)	Rb	ELISA, WB	
		α-Amylase 2A antibody	Hu	IHC-P, WB	
GTX300087	Pancreatic Marker Antibody Panel	α-Amylase 2B antibody	Hu	WB	
		CD31 antibody	Hu	IHC-P, WB	
		Cytokeratin 19	Hu	ICC/IF, IHC-P, WB	
		PDX1 antibody	Hu	IHC-P, WB	
		PLA2G1B antibody	Hu	WB	
Rabbit IgG antibody (HRP)	Rb	ELISA, WB			

# Custom Antibody Services

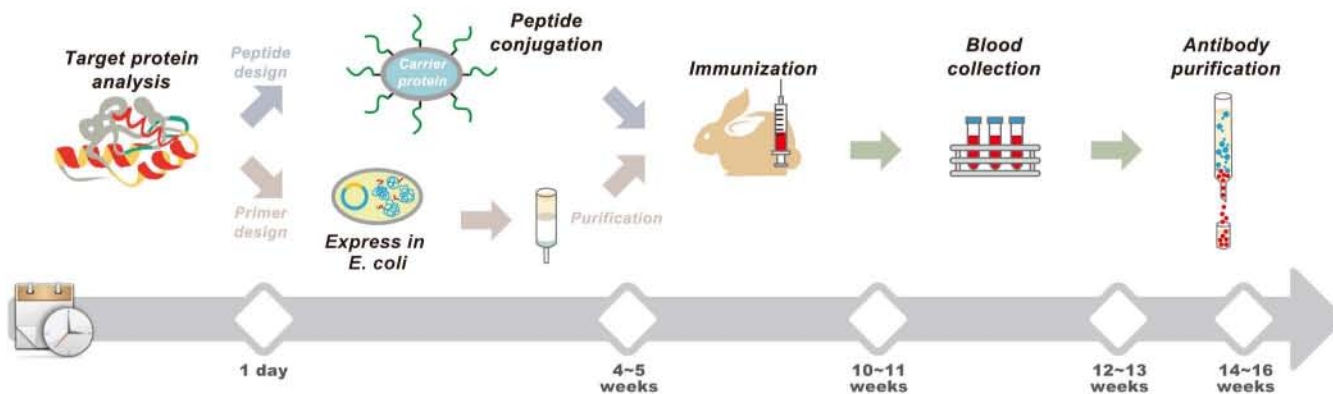
*Your Idea, Our Laboratory*

Let GeneTex become your personal **custom** antibody production facility. GeneTex has produced **over 20,000** polyclonal antibodies. Use our experience and expertise to help advance your research.

## Featured characteristics

- Proprietary bioinformatics database identifies the ideal target epitope and optimizes synthesis, solubility and antigenicity
- Efficient production of high quality antigens using prokaryotic expression or peptide conjugation
- Enhanced cocktail immunization technique produces high-titer antiserum
- Highly specific antigen affinity purification
- Online tracking system

## Flow Chart



Please contact us for details, pricing and if you have any questions about our custom antibody service.  
 Email: [custom\\_service@genetex.com](mailto:custom_service@genetex.com)



## International

Tel : 886.3.6208988  
Fax : 886.3.6209098  
E-mail : [info@genetex.com](mailto:info@genetex.com)

## USA

Tel : 1.949.553.1900  
Fax : 1.949.309.2888  
Toll-free : 1.877.GeneTex (1.877.436.3839)  
E-mail : [info@genetex.com](mailto:info@genetex.com)



[www.genetex.com](http://www.genetex.com)