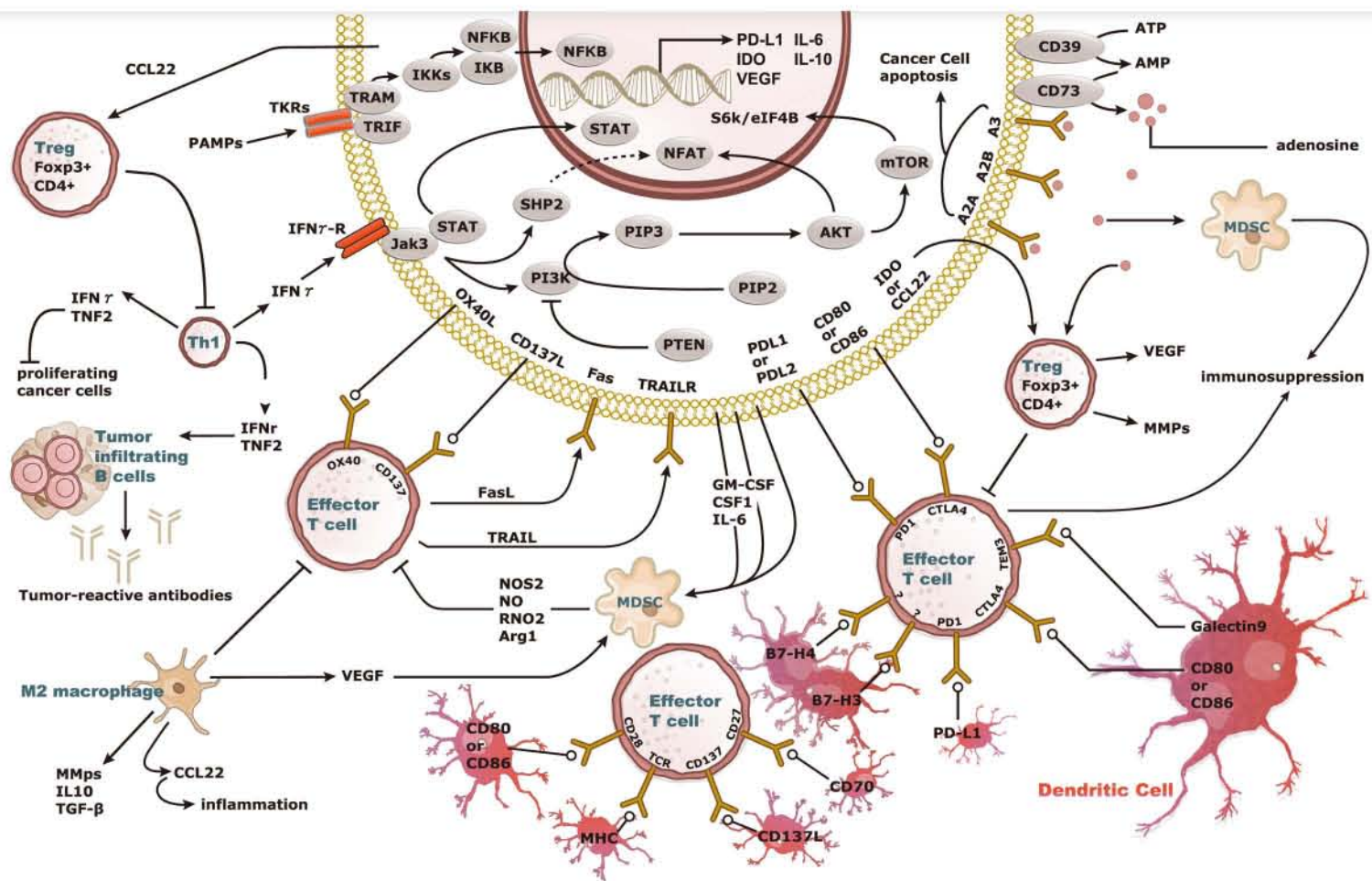
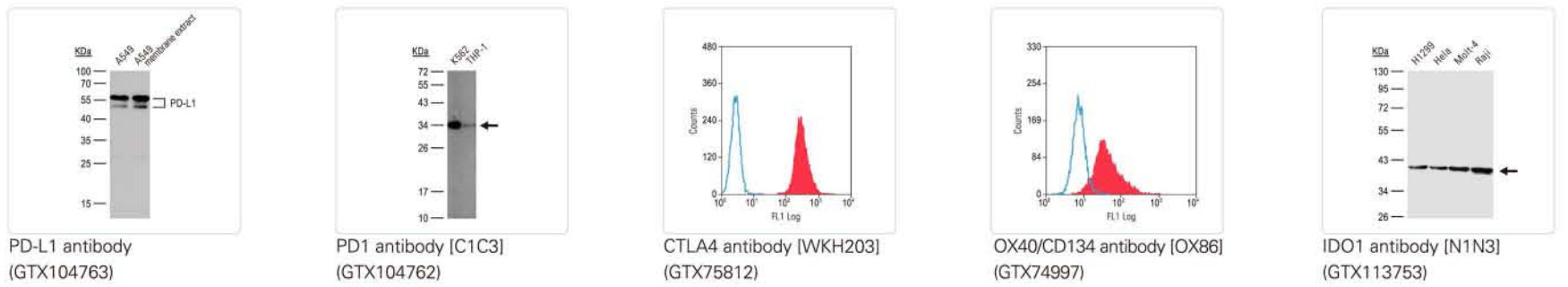


Cancer Immune Checkpoints



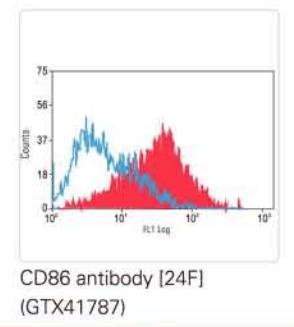
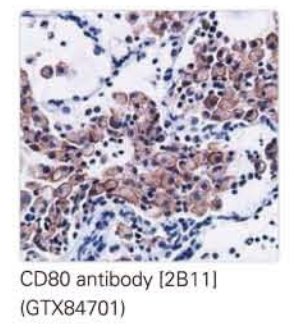
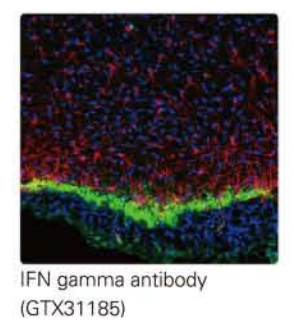
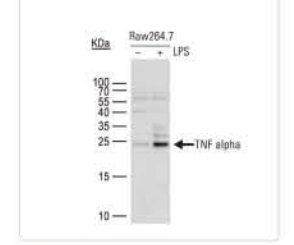
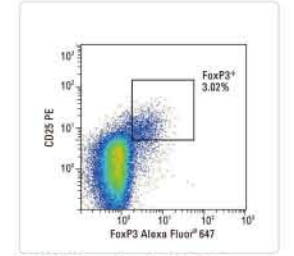
www.genetex.com

Increasing knowledge of how cancer cells escape immune destruction has significantly driven the evolution of cancer immunotherapy. In particular, studies describing how different immune checkpoints, including the PD-1 and CTLA-4 pathways, function to attenuate T cell antitumor activity have revealed novel opportunities for therapeutic intervention. Researchers have made promising strides in inhibiting these checkpoints to unleash the T cells' tumor-killing potential. Given that both radiotherapy and chemotherapy can also mobilize antitumor T cells, there is great excitement that checkpoint inhibition and other immunomodulatory approaches can be combined with conventional modalities to maximize clinical outcomes for a number of malignancies.

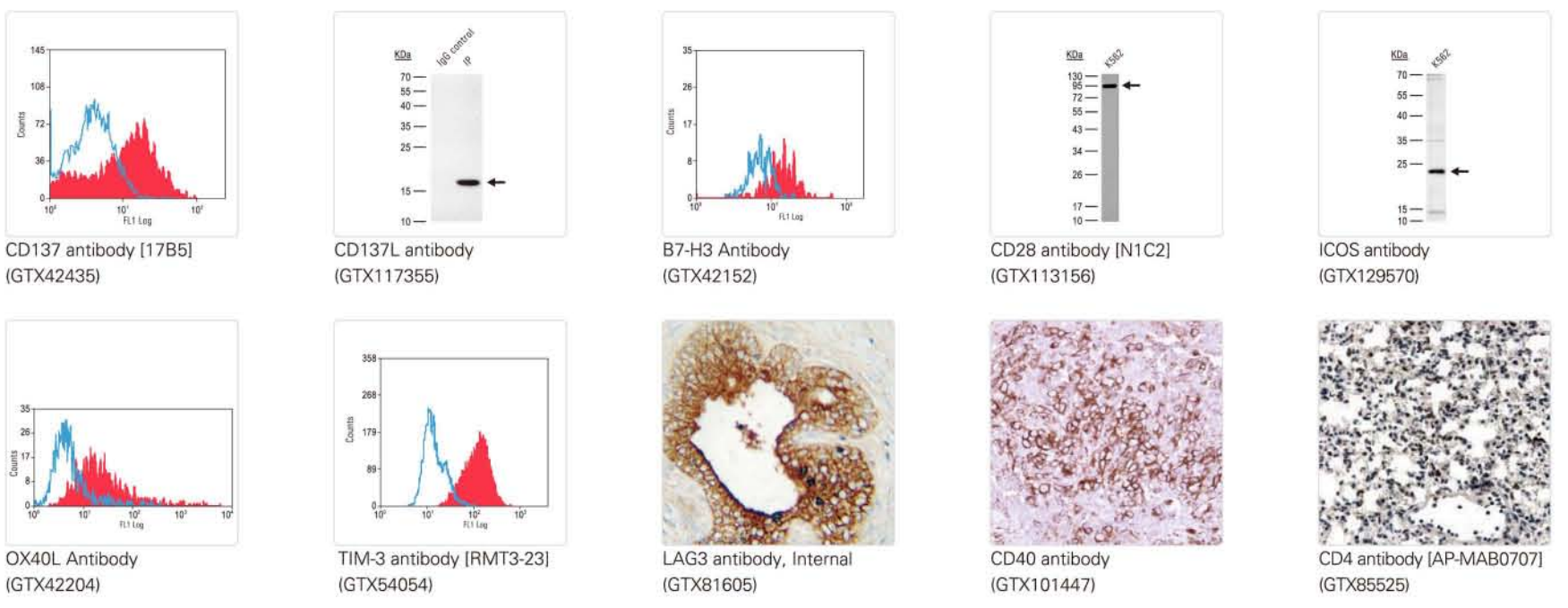


List of Representative Products

| Cat. No. | Product Name | Clonality | Reactivity | Application | Citation |
|-----------|---|-----------|------------------|--|----------|
| GTX42170 | B7-DC antibody [MIH14] | Ms mAb | Hu | FACS, IHC-Fr | |
| GTX42152 | B7-H3 / CD276 antibody [MIH42] | Ms mAb | Hu | FACS, IHC-Fr | |
| GTX88996 | B7-H4 antibody, Internal | Gt pAb | Hu | WB | |
| GTX42172 | BTLA antibody [MIH26] | Ms mAb | Hu | FACS, IHC-Fr | |
| GTX37456 | CCL22 antibody | Rb pAb | Ms, Rat | ELISA, IHC-P, WB | |
| GTX113156 | CD28 antibody [N1C2] | Rb pAb | Hu | WB | |
| GTX42437 | CD137 antibody [17B5] (Azide free) | Hm mAb | Ms | FACS, Functional Assay | |
| GTX117355 | CD137L antibody [N2C3] | Rb pAb | Hu | IP, WB | |
| GTX80197 | CD28 antibody [CD28.2] (FITC) | Ms mAb | Hu, NHuPm | FACS, ICC/IF, IHC-Fr, IP, WB, Functional Assay | |
| GTX42131 | CD28 antibody [YTH913.12] (Azide free) | Rat mAb | Hu | FACS, IHC-Fr, Functional Assay | |
| GTX84720 | CD4 antibody [10B5] | Ms mAb | Hu, Dog, Mk, Rat | IHC, IHC-P, WB | |
| GTX63943 | CD4 antibody [EPR6855] | Rb mAb | Hu | FACS, ICC/IF, IHC, IHC-P, WB | |
| GTX100824 | CD4 antibody [N3C3] | Rb pAb | Hu | WB | |
| GTX101447 | CD40 antibody | Rb pAb | Hu | IHC-P, WB | |
| GTX44541 | CD40 antibody [3/23] (Azide free) | Rat mAb | Ms | ELISA, FACS, IHC-Fr, Functional Assay | |
| GTX13546 | CD40L antibody [5F3] | Ms mAb | Hu | FACS | |
| GTX42386 | CD40L antibody [YMF323.6.2] | Rat mAb | Hu, RMK, CIMK | FACS, WB | |
| GTX84701 | CD80 antibody [2B11] | Ms mAb | Hu | ICC/IF, IHC, IHC-P, WB | |
| GTX75765 | CD80 antibody [MEM-233] | Ms mAb | Hu | FACS, IP, WB | |
| GTX41787 | CD86 antibody [24F] | Ms mAb | Rat | FACS, IHC-Fr, IP | |
| GTX74650 | CD86 antibody [BU63] | Ms mAb | Hu | FACS, IHC-Fr, IP | |
| GTX75812 | CTLA4 antibody [WKH203] | Ms mAb | Hu, Rat | ELISA, FACS | |
| GTX80283 | FOXP3 antibody [3G3] | Ms mAb | Hu, Ms | FACS, WB | |
| GTX107737 | FOXP3 antibody [C3], C-term | Rb pAb | Hu, Ms | IP, WB | |
| GTX89934 | FOXP3 antibody, C-term | Gt pAb | Hu | ICC/IF, IHC, IHC-P, WB, ChIP assay | |
| GTX127352 | Galectin9 antibody | Rb pAb | Hu | IHC-P, WB | |
| GTX89465 | HVEM / TR2 antibody, Internal | Gt pAb | Hu | WB | |
| GTX129570 | ICOS antibody | Rb pAb | Hu | WB | |
| GTX42157 | ICOS Ligand antibody [MIH11] | Ms mAb | Hu | FACS, IHC-Fr | |
| GTX113753 | IDO1 antibody [N1N3] | Rb pAb | Hu | ICC/IF, WB | |
| GTX31185 | IFN gamma antibody | Rb pAb | Rat | ELISA, IHC, WB | |
| GTX15624 | IFN gamma antibody [2G1] | Ms mAb | Hu, Ms | Blocking, ELISA, IHC, WB | |
| GTX42485 | IFN gamma R1 antibody [BB1E2] | Ms mAb | Hu, Bov | ELISA, FACS, IHC-Fr, WB | |
| GTX53343 | IFN gamma R2 antibody [7A25] | Hm mAb | Ms | Neut, WB | |
| GTX130513 | IL10 antibody | Rb pAb | Hu | ELISA, WB | |
| GTX101138 | IL2 antibody | Rb pAb | Hu | IHC-P, WB | |
| GTX108495 | IL2 Receptor beta antibody [C3], C-term | Rb pAb | Hu | ICC/IF, IHC-P, WB | |
| GTX76000 | KIR family antibody [NKVFS1] | Ms mAb | Hu | ELISA, FACS, IP, WB | |
| GTX42244 | LAG3 antibody [C9B7W] | Rat mAb | Ms | FACS, Functional Assay | |
| GTX81605 | LAG3 antibody, Internal | Rb pAb | Hu | ELISA, IHC, IHC-P, WB | |
| GTX42439 | OX40 / CD134 antibody [OX-40] | Ms mAb | Rat | FACS, IHC-Fr, IP | |
| GTX74997 | OX40 / CD134 antibody [OX86] | Rat mAb | Ms | FACS, IHC-Fr, Functional Assay | |
| GTX42204 | OX40L / CD252 antibody [ATM-2] (Azide free) | Ms mAb | Rat | FACS, Functional Assay | |
| GTX104762 | PD1 antibody [C1C3] | Rb pAb | Hu | WB | |
| GTX42144 | PD1 antibody [MIH4] | Ms mAb | Hu | FACS, IHC-Fr | |
| GTX104763 | PD-L1 antibody | Rb pAb | Hu | IHC-P, WB | |
| GTX42160 | PD-L1 antibody [MIH6] | Rat mAb | Ms | FACS, IHC-Fr, IP | |
| GTX85449 | PDL-2 antibody | Rb pAb | Hu, Ms, Rat | ELISA, ICC/IF, IHC, WB | |
| GTX62796 | STAT1 (phospho Ser727) antibody [EPR3146] | Rb mAb | Hu, Ms, Rat | ICC/IF, IHC-P, WB | |
| GTX83552 | STAT1 antibody [4H9] | Ms mAb | Hu, Dog, Mk | ICC/IF, IHC, IHC-P, WB | |
| GTX113010 | STAT1 antibody [N2C2], Internal | Rb pAb | Hu, Ms | ICC/IF, WB | |
| GTX110587 | STAT3 antibody [C2C3], C-term | Rb pAb | Hu, Ms | ICC/IF, IHC-P, WB | |
| GTX104616 | STAT3 antibody [C3], C-term | Rb pAb | Hu, Ms, Rat | ICC/IF, WB | |
| GTX14097 | T-bet / TBX21 antibody [4B10] | Ms mAb | Hu | FACS, IP, IB | |



www.genetex.com



List of Representative Products

| Cat. No. | Product Name | Clonality | Reactivity | Application | Citation |
|-----------|---------------------------|-----------|-------------|---|----------|
| GTX108701 | TBX21 antibody [N1C2] | Rb pAb | Hu | IHC-P, WB | |
| GTX110630 | TGF beta 1 antibody | Rb pAb | Hu, Ms, Rat | IHC-P, WB | |
| GTX21279 | TGF beta antibody [TB21] | Ms mAb | Hu | IHC, IHC-Fr, IHC-P, Neut, WB | |
| GTX54117 | TIM-3 antibody | Rb pAb | Hu, Ms | WB | |
| GTX54054 | TIM-3 antibody [RMT3-23] | Rat mAb | Ms | FACS, ICC/IF, IHC-Fr, IHC-P, Functional Assay | |
| GTX110520 | TNF alpha antibody | Rb pAb | Hu, Ms, Rat | ICC/IF, IHC-P, WB | |
| GTX31193 | TNF alpha antibody | Gt pAb | Ms | ELISA, IHC, Neut, WB | |
| GTX28349 | TNF alpha antibody [F6C5] | Ms mAb | Hu | ELISA, IHC-Fr, IHC-P | |

www.genetex.com