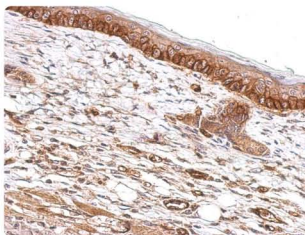
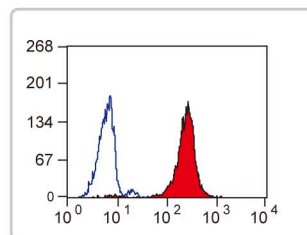


Cancer Stem Cell Markers

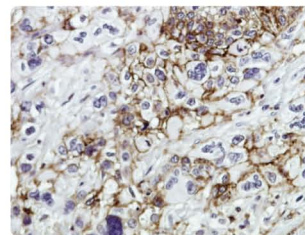
Surface markers



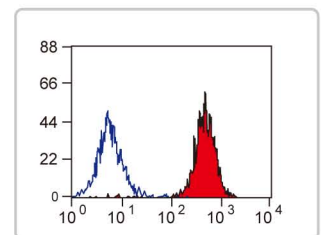
ABCG2 antibody (GTX100437):
IHC-P analysis of mahlavu xenograft.



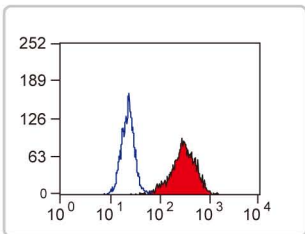
CD24 antibody [SN3] (GTX74945):
FACS analysis of human peripheral blood granulocytes (red).



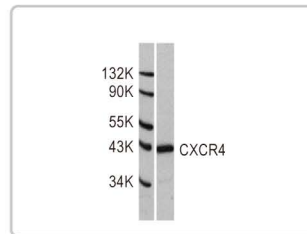
CD44 antibody (GTX102111):
IHC-P analysis of human pancreatic tumor.



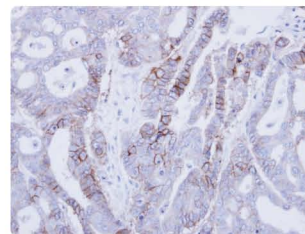
CD49f antibody [NKI-GoH3] (GTX41941):
FACS analysis of human peripheral blood platelets (red).



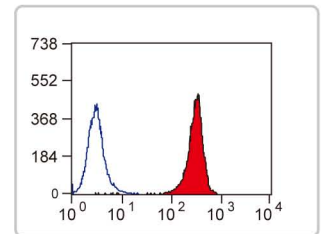
CD90 antibody [F15-42-1] (FITC) (GTX11155):
FACS analysis of HUT78 T cells (red).



CXCR4 antibody (GTX22074):
WB analysis of HeLa whole cell lysate.



EpCAM antibody (GTX113091):
IHC-P analysis of NCIN87 xenograft.



EpCAM antibody [VU-ID9] (GTX42071):
FACS analysis of HT-29 cells (red).

© Citation

	Cat. No.	Product name	Host & Clonality	Reactivity	Application
ABCG2	GTX100437	ABCG2 antibody	Rb pAb	Hu, Ms	IHC-P, WB
	© GTX23380	ABCG2 antibody [BXP-21]	Ms mAb	Hu	ICC/IF, IHC-Fr, IHC-P, WB
CD24	GTX81029	CD24 antibody	Rb pAb	Hu	ELISA, FACS, IHC, WB
	GTX74945	CD24 antibody [SN3]	Ms mAb	Hu	FACS, IHC-Fr
CD44	GTX102111	CD44 antibody	Rb pAb	Hu, Ms	ICC/IF, IHC-P, WB
	GTX112893	CD44 antibody	Rb pAb	Hu	IHC-P, WB
	GTX83114	CD44 antibody [8E2F3]	Ms mAb	Hu, Ms	ELISA, FACS, ICC/IF, IHC
	© GTX26124	CD44 antibody [F10-44-2]	Ms mAb	Hu	FACS, IHC-Fr, IHC-P, IP
	GTX20051	CD44 antibody [P2A1]	Ms mAb	Hu	FACS, H, IHC-P, IP
	GTX80086	CD44 antibody [IM7]	Rat mAb	Hu, Ms, Cat, Dog, Hrs	FACS, ICC/IF, IHC-Fr, IHC-P, IP, WB
CD47	GTX63166	CD47 antibody [EPR4150(2)]	Rb mAb	Hu, Ms, Rat	FACS, ICC/IF, WB
	GTX44592	CD47 antibody [1/1A4]	Ms mAb	Hu	FACS, IHC-Fr, IP
	GTX72398	CD47 antibody [B6H12.2]	Ms mAb	Hu	FACS, ICC/IF, IP
	GTX29089	CD47 antibody [MEM-122]	Ms mAb	Hu, Mk, Pig	FACS, IHC-Fr, WB
CD49f / Integrin α6	GTX100565	CD49f / Integrin α6 antibody	Rb pAb	Hu	WB
	GTX75046	CD49f antibody [450-30A]	Ms mAb	Hu	FACS, IHC-Fr
	© GTX76413	CD49f / Integrin α6 antibody [NKI-GoH3]	Rat mAb	Ms, Dog, Mk	FACS, IHC-Fr, IP

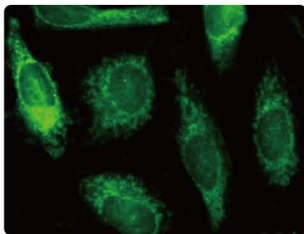
Surface markers

Citation

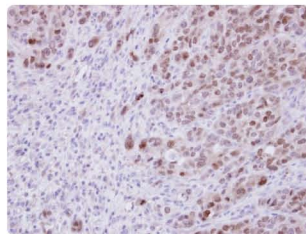
	Cat. No.	Product name	Host & Clonality	Reactivity	Application
CD90 / Thy1	GTX62251	CD90 antibody [EPR3132]	Rb mAb	Hu, Rat	ICC/IF, IHC-P, WB
	GTX11153	CD90 antibody [F15-42-1]	Ms mAb	Hu, Mk	FACS, IHC-Fr, IP
	GTX76208	CD90 antibody [OX-7]	Ms mAb	Ms, Gpig, Pig, Rb, Rat	FACS, IHC-Fr, IP, WB
	GTX28616	CD90 / Thy1 antibody [B417 (IBL-1)]	Rat mAb	Ms	FACS, ICC/IF, IHC-Fr
	GTX88569	CD90 / Thy1 antibody	Gt pAb	Hu, Dog, Pig	ELISA, WB
CD117 / c-Kit	GTX81335	c-Kit antibody	Rb pAb	Hu	IHC, WB
	GTX83074	c-Kit antibody [8D7]	Ms mAb	Hu	ELISA, IHC
	GTX11289	c-Kit antibody [104D2]	Ms mAb	Hu, Mk	FACS
	GTX74928	c-Kit / CD117 antibody [2B8]	Rat mAb	Ms	FACS, IHC-Fr
CD133	★ GTX100567	CD133 antibody	Rb pAb	Hu	FACS, IHC-P, WB
	★ GTX102109	CD133 antibody	Rb pAb	Hu	WB
CXCR4	GTX22074	CXCR4 antibody	Rb pAb	Hu	IHC-Fr, IP, WB, FACS
	GTX10403	CXCR4 antibody [44716.111]	Ms mAb	Hu, Cat	FACS, ICC/IF, IHC, Inhib
	GTX21671	CXCR4 antibody	Gt pAb	Hu, Rat	ELISA, IHC-P, WB
EpCAM	GTX113091	EpCAM antibody	Rb pAb	Hu	IHC-P, WB
	GTX28667	EpCAM antibody [B29.1 (VU-ID9)]	Ms mAb	Hu	FACS, ICC/IF, IHC-Fr, IHC-P, WB
	GTX80323	EpCAM antibody [G8.8]	Rat mAb	Ms	IHC, IP, WB

★ CD133 antibodies are not available for purchase in Australia, Canada, Europe, Japan and USA due to intellectual property restrictions.

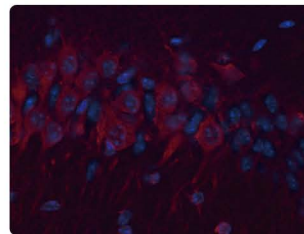
Intracellular markers



ALDH1A1 antibody (GTX100043):
ICC/IF analysis of methanol-fixed HeLa cells.



BMI1 antibody (GTX114008):
IHC-P analysis of DLD-1 xenograft.



Gli1 antibody (GTX124274):
IHC analysis of mouse hippocampus.



Nestin antibody (GTX37606):
IHC-Fr analysis of mouse hippocampus.

Citation

	Cat. No.	Product name	Host & Clonality	Reactivity	Application
ALDH1A1	GTX100043	ALDH1A1 antibody	Rb pAb	Hu	ICC/IF, IHC-P, WB
	GTX123973	ALDH1A1 antibody	Rb pAb	Hu, Ms, Rat	ICC/IF, IHC-P, WB
	GTX82775	ALDH1A1 antibody [5A11]	Ms mAb	Hu	ELISA, IHC
	GTX90658	ALDH1A1 antibody	Gt pAb	Hu, Ms, Cow, Dog, Rat	ELISA, WB
BMI-1	GTX114008	BMI-1 antibody	Rb pAb	Hu	IHC-P, WB
	GTX45791	BMI-1 antibody	Gt pAb	Hu	ELISA, WB
Gli-1	GTX124274	Gli-1 antibody	Rb pAb	Hu, Ms	IHC-P, WB
	GTX27523	Gli-1 antibody	Rb pAb	Hu, Ms	ELISA, ICC/IF, IHC-P, WB
Gli-2	GTX27195	Gli-2 antibody	Rb pAb	Ms, Rat	ELISA, IHC-P, WB
	GTX46056	Gli-2 antibody	Rb pAb	Hu	IHC-P, WB
Nestin	GTX37606	Nestin antibody	Rb pAb	Ms	ELISA, WB
	GTX26142	Nestin antibody [2Q178]	Ms mAb	Ms, Rat	EM, ICC/IF, IHC-Fr, IHC-P, WB
	GTX26320	Nestin antibody [3k1]	Ms mAb	Hu, Ms, Rat	ELISA, FACS, ICC/IF, IM, IP, WB



International

Tel 886.3.6208988
Fax 886.3.6209098
Address 6F-2, No.89, Dongmei Rd., Hsinchu 300, Taiwan (R.O.C.)
E-mail international@genetex.com

USA

Toll-free 1.877.GeneTex(1.877.436.3839)
Fax 1.949.309.2888
Address 2456 Alton Parkway, Irvine, CA 92606 USA
E-mail info@genetex.com



www.genetex.com