

CELL DEATH

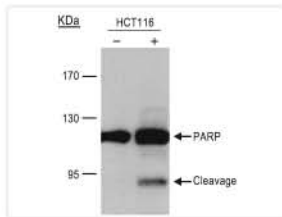
Your Expertise, Our Antibodies, Accelerated Discovery.

Contents

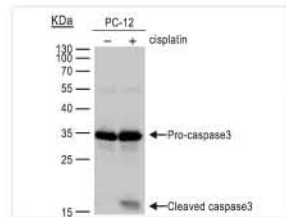
02 Apoptosis

04 Autophagy

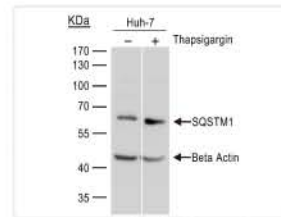
04 Necrosis



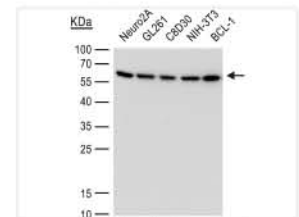
PARP1 antibody
(GTX112864)



Caspase-3 antibody
(GTX110543)



SQSTM1 antibody [N3C1],
Internal (GTX100685)



ATG12 antibody [GT166]
(GTX629815)

Antibody panels for studying cell death

Product Bcl-2 Family Antibody Panel

Cat. No.
GTX300026

Content	Reactivity	Application
Bcl-2 antibody [N1N2], N-term	Hu, Ms, Rat	IHC-P, WB
MCL1 antibody	Hu	ICC/IF, IHC-P, WB
Bax antibody [N1N2], N-term	Hu, Rat	ICC/IF, IHC-P, IP, WB
Bcl-X antibody	Hu, Ms, Rat	ICC/IF, IHC-P, IP, WB
BAK antibody [N1N2], N-term	Hu	IHC-P, WB
Bad antibody	Hu	WB
PUMA antibody [C2C3], C-term	Hu	IHC-P, IP, WB
Rabbit IgG antibody (HRP)	Rb	Dot, ELISA, WB

Product Caspase Antibody Panel

Cat. No.
GTX300110

Content	Reactivity	Application
Caspase 3 antibody	Hu, Ms, Rat	ICC/IF, IHC-P, IP, WB
Caspase 8 antibody	Hu	IHC-P, WB
Caspase 9 antibody	Hu, Rat	IP, WB
PAPR antibody	Hu, Ms	ICC/IF, WB, ChIP assay
Rabbit IgG antibody (HRP)	Rb	Dot, ELISA, WB

Product IAPs Family Antibody Panel

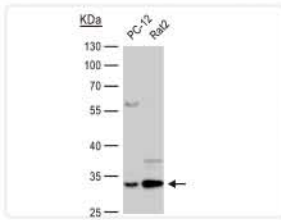
Cat. No.
GTX300097

Content	Reactivity	Application
cIAP1 antibody	Hu, Ms, Rat	IHC-P, WB
cIAP2 antibody	Hu	IHC-P, WB
Survivin antibody	Hu, Ms	ICC/IF, IHC-P, WB
XIAP antibody	Hu	ICC/IF, IHC-P, WB
Rabbit IgG antibody (HRP)	Rb	Dot, ELISA, WB

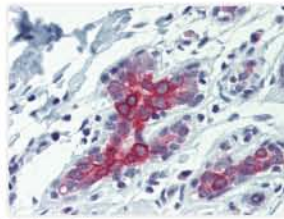
Product Autophagosome Marker Antibody Panel

Cat. No.
GTX300079

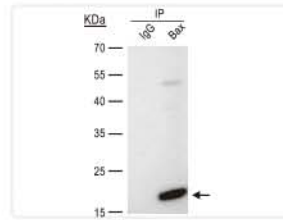
Content	Reactivity	Application
Atg5 antibody	Hu	ICC/IF, WB
Atg12 antibody	Hu, Ms, Rat	IHC-P, IP, WB
SQSTM1 antibody [N3C1], Internal	Hu, Ms, Rat, Zfsh, Honeybee	FACS, ICC/IF, IHC-P, IP, WB
LC3B antibody	Hu, Ms, Rat, Pig	FACS, ICC/IF, IP, WB
Rabbit IgG antibody (HRP)	Rb	Dot, ELISA, WB



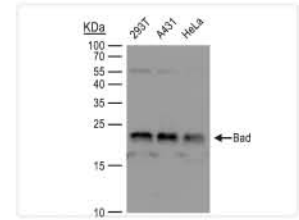
Annexin V antibody
(GTX103250)



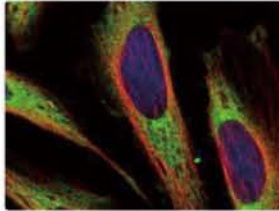
Bak antibody
(GTX100063)



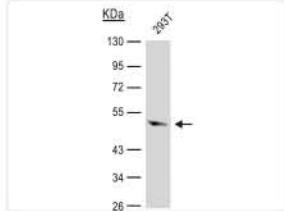
Bax antibody [N1N2], N-term
(GTX109683)



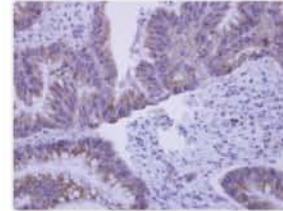
Bad antibody
(GTX130108)



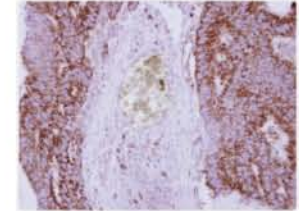
Bcl-X antibody
(GTX105661)



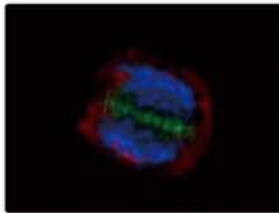
Caspase 9 antibody [N2C3]
(GTX112888)



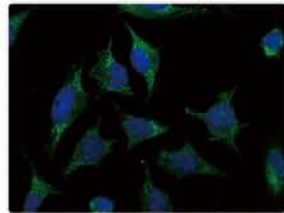
Caspase-8 antibody
(GTX110723)



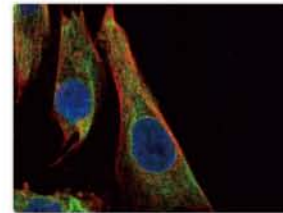
Cytochrome C antibody
(GTX108585)



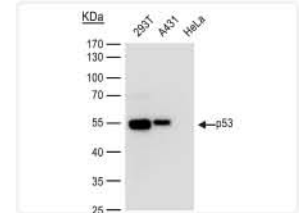
Survivin antibody
(GTX100052)



XIAP antibody [C1C3]
(GTX100496)



FADD antibody [N3C2], Internal
(GTX116064)

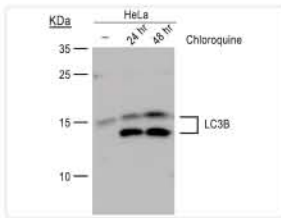


p53 antibody [D01]
(GTX70214)

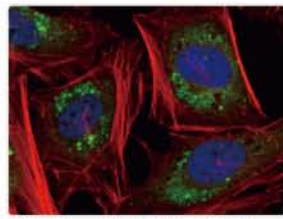
Citation

Product Name	Clonality	Reactivity	Application	Cat. No.
AIF antibody [N1C1]	Rb pAb	Hu, Ms	ICC/IF, IHC-P, WB	GTX113306
AIF antibody [N1N2], N-term	Rb pAb	Hu	ICC/IF, IHC-P, WB	GTX102399
Annexin A1 antibody	Rb pAb	Hu, Ms	ICC/IF, IHC-P, WB	GTX113329
Annexin V antibody	Rb pAb	Hu, Ms, Rat	ICC/IF, WB	GTX103250
APAF1 antibody [C3], C-term	Rb pAb	Hu	IHC-P	GTX101067
ASK1 antibody [C2C3-2], C-term	Rb pAb	Hu, Ms	IHC-P, WB	GTX107921
Bad (phospho Ser112) antibody	Rb pAb	Hu, Ms, Rat	IHC, IP, WB	GTX59560
Bad (phospho Ser136) antibody	Rb pAb	Hu, Ms, Rat	IHC-P, WB	GTX38680
Bad antibody	Rb pAb	Hu	WB	GTX130108
BAK antibody [N1N2], N-term	Rb pAb	Hu	IHC-P, WB	GTX100063
Bax antibody [5B7]	Ms mAb	Ms	ICC/IF, WB	GTX23191
Bax antibody [E63]	Rb mAb	Hu, Ms, Rat	ELISA, FACS, ICC/IF, IHC-P, IP, WB	GTX61026
Bax antibody [N1N2], N-term	Rb pAb	Hu, Rat	ICC/IF, IHC-P, IP, WB	GTX109683
Bcl-2 antibody [E17]	Rb mAb	Hu, Ms, Rat	FACS, ICC/IF, IHC-P, IP, WB	GTX61005
Bcl-2 antibody [N1N2], N-term	Rb pAb	Hu, Ms, Rat	IHC-P, WB	GTX100064
BCL2L10 antibody [N1C3]	Rb pAb	Hu	ICC/IF, IHC-P, WB	GTX113911
BCL2L10 antibody [N2C2], Internal	Rb pAb	Hu	ICC/IF, IHC-P, WB	GTX111872
BCL2L12 antibody	Rb pAb	Hu	IHC-P, WB	GTX112088
BCL2L15 antibody	Rb pAb	Hu	ICC/IF, IHC-P, WB	GTX110988
Bcl-X antibody	Rb pAb	Hu, Ms, Rat	ICC/IF, IHC-P, IP, WB	GTX105661
Bcl-XL antibody [4A9]	Ms mAb	Hu	ICC/IF, WB	GTX84834
Bcl-XS antibody	Rb pAb	Hu	IHC-P, WB	GTX124266
Bid antibody [N1C3-2]	Rb pAb	Hu	ICC/IF, IHC-P, IP, WB	GTX110568
Calpain 1 antibody	Rb pAb	Hu	FACS, ICC/IF, IHC-P, WB	GTX102350
Calpain 2 antibody [N2C1], Internal	Rb pAb	Hu, Ms	FACS, ICC/IF, IHC, WB	GTX102499
Caspase 1 antibody	Rb pAb	Hu	ICC/IF, IHC-P, WB	GTX111630
Caspase 1 antibody [14F468]	Ms mAb	Hu, Pig, Rat	IHC, IHC-P, WB	GTX14367
Caspase 2 antibody	Rb pAb	Hu	WB	GTX110542
Caspase 2 antibody, Internal	Rb pAb	Hu	ELISA, FACS, IHC, IHC-P, WB	GTX82535
Caspase 3 (active) antibody	Rb pAb	Hu, Ms, Rat, Frt	ICC/IF, IHC, IHC-Fr, IHC-P, WB	GTX22302
Caspase 3 (cleaved Asp175) antibody	Rb pAb	Hu, Ms, Rat	ELISA, IHC-P, WB	GTX86952
Caspase 3 antibody	Rb pAb	Hu, Ms, Rat	ICC/IF, IHC-P, IP, WB	GTX110543
Caspase 3 antibody	Rb pAb	Hu, Ms, Rat, Rb	IHC, IHC-P, IP, WB	GTX73090
Caspase 4 (cleaved Gln81) antibody	Rb pAb	Hu	ELISA, WB	GTX86890
Caspase 4 antibody	Rb pAb	Hu	IHC-P, WB	GTX113639
Caspase 4 antibody [N2N3]	Rb pAb	Hu	ICC/IF, IHC-P, WB	GTX100204

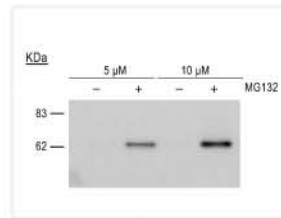
Product Name	Clonality	Reactivity	Application	Cat. No.
Caspase 5 (cleaved Asp121) antibody	Rb pAb	Hu	ELISA, WB	GTX86923
Caspase 5 (cleaved Ser331) antibody	Rb pAb	Hu	ELISA, WB	GTX86899
Caspase 5 antibody	Rb pAb	Hu, Ms, Mk, Rat, Hm, Bov	WB	GTX59707
Caspase 6 (active) antibody	Rb pAb	Hu, Ms, Rat	WB	GTX59553
Caspase 6 antibody	Rb pAb	Hu, Ms, Rat	IHC, WB	GTX59708
Caspase 6 antibody [EP1325Y]	Rb mAb	Hu, Ms, Rat	FACS, ICC/IF, IHC-P, IP, WB	GTX61526
Caspase 7 (active) antibody	Rb pAb	Hu, Ms, Rat	ICC/IF, IHC, IP, WB	GTX22323
Caspase 7 p11 subunit antibody	Rb pAb	Hu	IHC-P, WB	GTX123679
Caspase 8 (active) antibody	Rb pAb	Ms, Rat	WB	GTX59607
Caspase 8 antibody	Rb pAb	Hu	IHC-P, WB	GTX110723
Caspase 9 (active) antibody	Rb pAb	Hu	ICC/IF, IP, WB	GTX22324
Caspase 9 antibody [N2C3]	Rb pAb	Hu, Rat	IP, WB	GTX112888
Caspase 10 antibody	Rb pAb	Hu	ICC/IF, IHC-P, WB	GTX113148
Caspase 11 antibody [17D9]	Rat mAb	Ms, Rat	IHC-Fr, IP, WB	GTX10454
Caspase 12 antibody, N-term	Rb pAb	Hu, Ms, Rat	IHC-P, WB	GTX74429
Caspase 14 antibody	Rb pAb	Hu	WB	GTX111888
cIAP1 antibody	Rb pAb	Hu, Ms, Rat	IHC-P, WB	GTX110087
cIAP1 antibody [GT422]	Ms mAb	Hu	WB	GTX629402
cIAP2 antibody [C1C3]	Rb pAb	Hu	IHC-P, WB	GTX113128
Clusterin antibody	Rb pAb	Hu, Ms, Rat	IHC-P, WB	GTX101236
Cytochrome C antibody	Rb pAb	Hu, Ms, Rat	ICC/IF, IHC-P, WB	GTX108585
Cytochrome C antibody [7H8.2C12]	Ms mAb	Hu, Ms, Dm, Pig, Rat, Hm, Hrs, Pgn	WB	GTX13575
DAP3 antibody [N1C2-2]	Rb pAb	Hu	ICC/IF, IHC-P, WB	GTX113864
Daxx antibody [N1N3]	Rb pAb	Hu	ICC/IF, IHC-P, WB	GTX112908
Diablo antibody [N1C3]	Rb pAb	Hu	IHC-P, WB	GTX106746
DR3 antibody	Rb pAb	Hu	IHC-P, WB	GTX105713
EndoG antibody	Rb pAb	Hu, Ms, Rat	IHC-P, WB	GTX10522
EndoG antibody [N1C3]	Rb pAb	Hu, Ms	WB	GTX114385
FADD antibody [EPR5030], C-term	Rb mAb	Ms	FACS, IHC-Fr, IHC-P, WB	GTX62984
FADD antibody [N3C2], Internal	Rb pAb	Hu	ICC/IF, IHC-P, WB	GTX116064
Fas antibody	Rb pAb	Hu, Ms, Dog, Rat	FACS, IHC, WB	GTX13550
Fas antibody [H11]	Rat mAb	Hu, Ms, Dog, Cat	FACS, ICC/IF, WB	GTX16104
Fas Ligand antibody	Rb pAb	Hu, Ms, Rat	IHC, IHC-P, WB	GTX15285
Fas Ligand antibody [N2C1], Internal	Rb pAb	Hu	WB	GTX100644
FLIP antibody [N1C1]	Rb pAb	Hu	IHC-P, WB	GTX113047
HSP27 antibody	Rb pAb	Hu, Ms, Rat	FACS, ICC/IF, IHC-P, IP, WB	GTX101145
HSP27 antibody	Rb pAb	Hu	ICC/IF, IHC-P, IP, WB	GTX112964
HSP70 1A antibody	Rb pAb	Hu, Ms	ICC/IF, IHC-P, IP, WB	GTX111088
HSP70 1B antibody	Rb pAb	Hu	ICC/IF, IHC-P, WB	GTX106148
Hsp90 alpha antibody	Rb pAb	Hu, Rat	ICC/IF, IHC-P, IP, WB	GTX109753
HSP90 beta antibody	Rb pAb	Hu, Ms, Rat	ICC/IF, IHC-P, WB, ELISA-Ag	GTX101448
ICAD (cleaved Asp224) antibody	Rb pAb	Hu	ELISA, IHC, IHC-P	GTX86959
ICAD antibody [N1C3]	Rb pAb	Hu, Ms	WB	GTX103668
ICAD antibody [N2C3]	Rb pAb	Hu	WB	GTX113416
IRE1 (phospho Ser724) antibody [EPR5253]	Rb mAb	Hu	FACS, WB	GTX63722
JNK1 antibody	Rb pAb	Hu, Ms	ICC/IF, IHC-P, WB	GTX101165
Lamin A + C antibody	Rb pAb	Hu, Ms, Rat	ICC/IF, IHC-P, IP, WB	GTX101127
Lamin A + C antibody	Rb pAb	Hu, Ms	IHC-P, WB	GTX111677
MCL1 antibody	Rb pAb	Hu	ICC/IF, IHC-P, WB	GTX102026
MDM2 antibody	Rb pAb	Hu	ICC/IF, IHC-P	GTX100653
Nuclear Matrix Protein p84 antibody [5E10]	Ms mAb	Hu, Ms, Mk, Rat	ICC/IF, IHC, IP, WB, ChIP assay	GTX70220
Nuclear Matrix Protein p84 antibody [5E10] (HRP)	Ms mAb	Hu	WB	GTX70220-01
p53 antibody	Rb pAb	Hu	ICC/IF, IHC-P, IP, WB, ChIP assay	GTX102965
p53 antibody [D01]	Ms mAb	Hu	ELISA, FACS, ICC/IF, IHC-Fr, IHC-P, IP, WB, ChIP/Chip	GTX70214
PARP antibody	Rb pAb	Hu, Ms	ICC/IF, WB, ChIP assay	GTX100573
PARP antibody [GT6212]	Ms mAb	Hu	WB	GTX628836
PARP antibody [N2C1], Internal	Rb pAb	Hu	ICC/IF, IHC-P, IP, WB, ChIP assay	GTX112864
PUMA antibody	Rb pAb	Hu, Ms	ICC/IF, WB	GTX29643
PUMA antibody [C2C3], C-term	Rb pAb	Hu	IHC-P, IP, WB	GTX109675
PUMA antibody [EP512Y], C-term	Rb mAb	Hu	FACS, ICC/IF, IHC-P, WB	GTX61282
Smac antibody [N1C3-3]	Rb pAb	Hu	IHC-P, WB	GTX113108
Survivin antibody	Rb pAb	Hu	ICC/IF, IHC-P, WB	GTX100052
Survivin antibody	Rb pAb	Hu, Ms	ICC/IF, IHC-P, WB	GTX100441
TRADD antibody [N1], N-term	Rb pAb	Hu	ICC/IF, IHC-P, WB	GTX104695
TRAF2 antibody	Rb pAb	Hu	ICC/IF, IHC-P, WB	GTX111138
TRAIL antibody	Rb pAb	Hu	WB	GTX113043
Transglutaminase 2 antibody [N3C3]	Rb pAb	Hu, Ms	ICC/IF, IHC-P, WB	GTX111702
XIAP antibody [C1C3]	Rb pAb	Hu, Ms	ICC/IF, IHC-P, WB	GTX100496



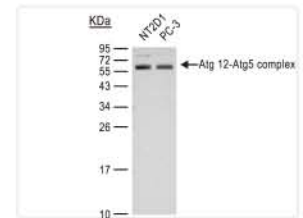
LC3B antibody
(GTx127375)



SQSTM1 antibody [GT1478]
(GTx629890)



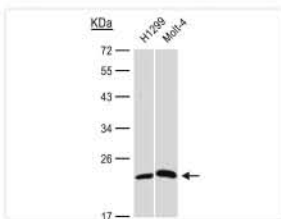
SQSTM1 (phospho Ser403) antibody
(GTx128171)



ATG5 antibody
(GTx113309)

Citation

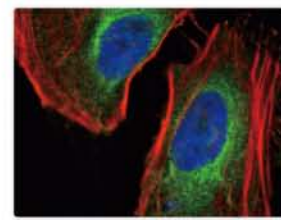
Product Name	Clonality	Reactivity	Application	Cat. No.
ATG4B antibody	Rb pAb	Hu	IHC-P, WB	GTx115678
ATG5 antibody	Rb pAb	Hu	ICC/IF, WB	GTx113309
ATG7 antibody [N3C2], Internal	Rb pAb	Ms	WB	GTx113613
ATG9A antibody	Rb pAb	Hu, Ms, Rat	ICC/IF, IHC-P, IP, WB	GTx128427
ATG10 antibody	Rb pAb	Hu	WB	GTx129097
ATG12 antibody	Rb pAb	Hu, Ms, Rat	IHC-P, IP, WB	GTx124181
ATG13 antibody	Rb pAb	Hu, Ms	IHC-P, WB	GTx123970
ATG13 antibody	Rb pAb	Hu	IHC-P, WB	GTx122766
ATG14 antibody	Rb pAb	Hu	IHC-P, WB	GTx128166
ATG14 antibody	Rb pAb	Hu	WB	GTx119950
ATG16L1 antibody	Rb pAb	Hu, Ms	IHC-P, WB	GTx129098
FIP200 antibody	Rb pAb	Hu	WB	GTx129093
FLIP antibody [N1C1]	Rb pAb	Hu	IHC-P, WB	GTx113047
BNIP3 antibody [ANa40]	Ms mAb	Hu	ELISA, ICC/IF, IP, WB	GTx10433
BNIP3L antibody	Rb pAb	Hu, Ms	ICC/IF, IHC-P, WB	GTx111876
FIS1 antibody [GT9810]	Ms mAb	Hu	ICC/IF, WB	GTx631209
GABARAPL1 antibody	Rb pAb	Hu	ICC/IF, WB	GTx129277
GABARAPL2 antibody	Rb pAb	Hu	IHC-P, WB	GTx102006
HMGB1 antibody	Rb pAb	Hu, Ms, Rat	ICC/IF, IHC-P, WB	GTx112959
HMGB1 antibody [GT383]	Ms mAb	Hu, Ms, Rat	IHC-P, WB	GTx628834
LC3B antibody	Rb pAb	Hu, Ms, Pig, Rat	FACS, ICC/IF, IP, WB	GTx127375
mTOR antibody [C3], C-term	Rb pAb	Hu, Ms, Rat	ICC/IF, IHC-P, IP, WB, ChIP assay	GTx101557
NBR1 antibody	Rb pAb	Hu, Ms	IHC-P, WB	GTx114539
NDP52 antibody	Rb pAb	Hu	ICC/IF, IHC-P, IP, WB	GTx115378
NDP52 antibody [GT422]	Ms mAb	Hu	ICC/IF, IP, WB	GTx630396
NOD1 antibody [C2C3], C-term	Rb pAb	Hu	ICC/IF, WB	GTx108811
Optineurin antibody	Rb pAb	Hu	ICC/IF, IHC-P, IP, WB	GTx105447
PINK1 antibody [N3C3]	Rb pAb	Hu	ICC/IF, WB	GTx107851
SQSTM1 antibody [GT1478]	Ms mAb	Hu, Ms	FACS, ICC/IF, WB	GTx629890
SQSTM1 antibody [N3C1], Internal	Rb pAb	Hu, Ms, Rat, Zfsh, Honeybee	FACS, ICC/IF, IHC-P, IP, WB	GTx100685
SQSTM1 (phospho Ser403) antibody	Rb pAb	Hu, Ms, Rat	FACS, IHC-P, WB	GTx128171
ULK1 antibody	Rb pAb	Hu, Rat	WB	GTx128064
ULK2 antibody [C2C3], C-term	Rb pAb	Hu, Ms	ICC/IF, IHC-P, WB	GTx111476
UVRAG antibody, C-term	Rb pAb	Hu, Ms	ICC/IF, IHC, WB	GTx16333



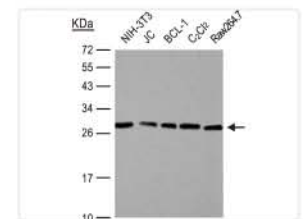
CRP antibody
(GTx101262)



Cyclophilin A antibody
(GTx104698)



LDH-A antibody
(GTx101416)



HMGB1 antibody
(GTx101277)

Citation

Product Name	Clonality	Reactivity	Application	Cat. No.
C Reactive Protein antibody [N1C3]	Rb pAb	Hu	WB	GTx101262
C Reactive Protein antibody [C1]	Ms mAb	Hu	Apuri, IHC, WB	GTx10026
Cyclophilin A antibody [C1C3]	Rb pAb	Hu	ICC/IF, IHC-P, WB	GTx104698
Cyclophilin A antibody [N1C3]	Rb pAb	Hu, Ms	IHC-P, WB	GTx113520
Cyclophilin 40 antibody	Rb pAb	Hu, Ms	ICC/IF, IHC-P, WB	GTx104038
HMGB1 antibody	Rb pAb	Hu, Ms, Rat	ICC/IF, IHC, IHC-P, WB	GTx101277
LDHA antibody	Rb pAb	Hu, Ms, Rat	ICC/IF, IHC-P, WB	GTx101416
LDHA antibody [AT1A4]	Ms mAb	Hu	ELISA, ICC/IF, WB	GTx50001
RIP3 antibody	Rb pAb	Hu, Ms	ICC/IF, IHC-P, WB	GTx107574