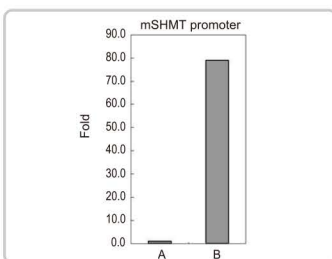


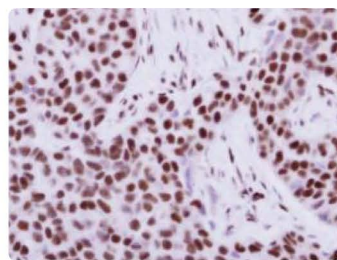
ChIP-grade Antibodies

The Chromatin Immunoprecipitation (ChIP) assay has become an indispensable tool for interrogating direct or indirect protein-chromatin interactions on a single-gene or genome-wide scale. All of GeneTex's ChIP-grade antibodies have been extensively validated for ChIP and other applications by our own in-house product development scientists and in many cases by outside investigators in the research community.

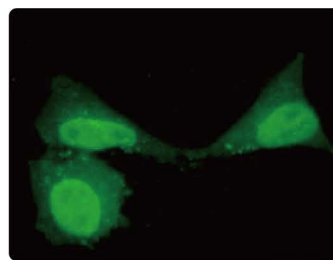
GeneTex's ChIP-grade product line continues to expand as we promise to provide you not only with our fully guaranteed antibodies but excellent and trustworthy technical support as well.



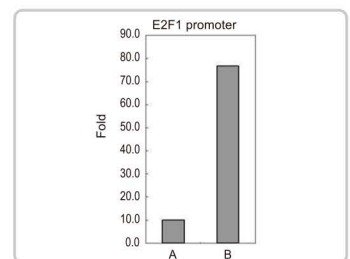
c-Myc antibody [N1], N-term (GTX109636)
ChIP analysis on mSHMT promoter with cross-linked chromatin from 293T cells.



KAP1 antibody [N3C2], Internal (GTX102226)
IHC analysis of paraffin-embedded Breast ca.



NFkB p105/p50 antibody (GTX110585)
IFA analysis of paraformaldehyde-fixed HeLa cells.



PAX8 antibody (GTX101583)
ChIP analysis on E2F1 promoter with cross-linked chromatin from 293T cells.

Selected ChIP-grade Antibodies

Cat. No.	Product name	Host & Clonality	Reactivity	Application
GTX13573	AIRE (isoforms 1 and 2) antibody, C-term	Gt pAb	Hu	ELISA, IHC, IHC-P, WB, ChIP
GTX22769	Aryl Hydrocarbon Receptor antibody [RPT9]	Ms mAb	Hu, Ms, Rat	GSA, ICC/IF, IHC-Fr, IP, WB, ChIP
C GTX70103	ATM antibody [2C1]	Ms mAb	Hu, Ms, Mk, Rat	ELISA, FACS, ICC/IF, IHC-P, IP, WB, ChIP
GTX25276	BCOR / BCL6 co-repressor antibody, N-term	Gt pAb	Hu, Ms, Cow, Dog, Pig	ELISA, ChIP
C GTX70111	BRCA1 antibody [17F8] - ChIP grade	Ms mAb	Hu, Ms	ELISA, ICC/IF, IHC, IHC-P, IP, WB, ChIP
C GTX70115	BRCA1 antibody [6B4] - ChIP grade	Ms mAb	Hu, Ms	ICC/IF, IHC, IP, WB, ChIP
C GTX114650	Brn2 antibody	Rb pAb	Hu, Ms	ICC/IF, IHC, IHC-P, IP, WB, ChIP
GTX101249	CBP antibody [C3], C-term	Rb pAb	Hu, Mk	ICC/IF, IHC-P, IP, WB, ChIP
GTX103436	c-Myc antibody	Rb pAb	Hu, Ms	IP, WB, ChIP
C GTX20056	c-Myc antibody [9E11]	Ms mAb	Hu, Ms	ELISA, IHC-Fr, IHC-P, IP, WB, ChIP
C GTX109636	c-Myc antibody [N1], N-term	Rb pAb	Hu, Ms	FACS, ICC/IF, WB, ChIP
C GTX70264	CtIP antibody [19E8]	Ms mAb	Hu, Ms	ICC/IF, IP, WB, ChIP
GTX10342	CTNNB1 antibody	Rb pAb	Hu	WB, ChIP
GTX48548	Dnmt1 antibody [60B1220.1]	Ms mAb	Hu, Ms, Zfsh	IHC-P, IP, WB, ChIP
C GTX116011	DNMT1 antibody [N1], N-term	Rb pAb	Hu	ICC/IF, IHC-P, WB, ChIP
GTX124435	Epas1b antibody	Rb pAb	Zfsh	IHC-P, WB, ChIP
C GTX70174	Estrogen Receptor beta antibody [14C8]	Ms mAb	Hu, Ms	FACS, ICC/IF, IHC, IHC-P, WB, WB-Ag, ChIP
C GTX70178	Estrogen Receptor beta antibody [6A12]	Ms mAb	Hu	ICC/IF, IHC, WB, ChIP
C GTX70182	Estrogen Receptor beta antibody [7B10.7]	Ms mAb	Hu	IP, WB, ChIP
GTX25089	FOXA1 antibody, C-term	Gt pAb	Hu, Ms, Cow, Pig, Rat	ELISA, IHC, WB, ChIP
C GTX102170	FOXM1 antibody	Rb pAb	Hu	WB, ChIP
C GTX100276	FOXM1 antibody [C3], C-term	Rb pAb	Hu	IHC-P, WB, ChIP
C GTX100513	HDAC1 antibody	Rb pAb	Hu, Ms, Rat	ICC/IF, IHC-P, IP, WB, ChIP
GTX27028	HDAC1 antibody	Rb pAb	Hu, Ms, Rat	Dot, IHC-P, IP, WB, ChIP
GTX20012	HDAC1 antibody	Rb pAb	Hu, Ms	ELISA, ICC/IF, ChIP

Selected ChIP-grade Antibodies

Cat. No.	Product name	Host & Clonality	Reactivity	Application
GTX109642	HDAC2 antibody	Rb pAb	Hu, Ms, Rat	ICC/IF, IHC-P, IP, WB, ChIP
GTX27029	HDAC2 antibody	Rb pAb	Hu, Ms, Rat	Dot, IHC-P, IP, WB, ChIP
GTX109679	HDAC3 antibody [C3], C-term	Rb pAb	Hu	ICC/IF, IHC-P, IP, WB, ChIP
GTX21440	HDAC6 antibody	Rb pAb	Hu, Ms, Rat	IHC-P, WB, ChIP
GTX21441	HDAC7 antibody	Rb pAb	Hu, Ms, Rat	IHC-Fr, WB, ChIP
C GTX30124	HIF1 alpha antibody	Rb pAb	Hu, Ms, Rat, Pig, NHuPrm, XI	ICC/IF, IHC, IP, WB, ChIP
GTX127309	HIF1 alpha antibody	Rb pAb	Hu, Ms	ICC/IF, IP, WB, ChIP
C GTX30105	HIF1 alpha antibody [H1alpha67]	Ms mAb	Hu, Ms, Frt, Mk, Pig, Rb, Rat, Shp	ICC/IF, IHC, IHC-Fr, IHC-P, IP, WB, ChIP
C GTX103707	HIF2 alpha antibody [N1N3]	Rb pAb	Hu, Zfsh	ICC/IF, IHC-P, WB, ChIP
GTX108273	Histone H2A.Z antibody	Rb pAb	Hu	ICC/IF, IHC-P, IP, WB, ChIP
GTX21790	Histone H2B antibody	Rb pAb	Hu, At, Mamm, Rat	ICC/IF, WB, ChIP
C GTX121915	Histone H3 (di-Methyl Lys4) antibody	Rb pAb	Hu	ICC/IF, IHC-P, IP, WB, ChIP
C GTX50897	Histone H3 (tri-methyl Lys4) antibody [MAB10304]	Ms mAb	Hu	ELISA, ICC/IF, WB, ChIP
GTX40617	Histone H4 (acetyl) antibody	Rb pAb	Hu, Ms, Amph, Dm, Mamm, Plnts, Zfsh, Yeast	ELISA, ICC/IF, IP, WB, ChIP
GTX100519	HMG2 antibody - ChIP grade	Rb pAb	Hu, Ms, Rat	ICC/IF, IHC-P, WB, ChIP
GTX102226	KAP1 antibody [N3C2], Internal	Rb pAb	Hu, Ms	ICC/IF, IHC-P, IP, WB, ChIP
GTX89710	KLF1 antibody, N-term	Gt pAb	Hu, Cow, Dog, Pig	ELISA, ChIP
GTX107234	L3MBTL2 antibody	Rb pAb	Hu	IP, WB, ChIP
GTX23499	LDB1 antibody	Rb pAb	Hu, Ms, XI	WB, ChIP
C GTX109519	MAD1 antibody	Rb pAb	Hu, Ms, Rat	ICC/IF, IHC-P, IP, WB, ChIP
C GTX100885	MyoD antibody [N1N3]	Rb pAb	Hu, Ms	WB, ChIP
GTX23482	NCoR antibody	Rb pAb	Hu, Ms	IP, WB, ChIP
C GTX22722	NFAT1 antibody [25A10.D6.D2]	Ms mAb	Hu, Ms, Rat	GSA, ICC/IF, IP, WB, ChIP
C GTX110585	NFkB p105/p50 antibody	Rb pAb	Hu, Ms	ICC/IF, IHC, IHC-P, WB, ChIP
GTX103322	NRF2 antibody [N2C2], Internal	Rb pAb	Hu, Ms	ICC/IF, IHC-P, WB, ChIP
C GTX30908	Nucleolin antibody	Rb pAb	Hu, Ms	IP, WB, ChIP
C GTX13541	Nucleolin antibody [4E2]	Ms mAb	Hu, Cow	ICC/IF, IHC, WB, ChIP
GTX89991	ORC4L antibody, C-term	Gt pAb	Hu, Ms, Cow, Dog, Rat	ELISA, WB, ChIP
GTX80357	ORC6 antibody [3A4]	Rat mAb	Hu	IP, WB, ChIP
C GTX20080	p19ARF antibody	Rb pAb	Ms, Hu	ELISA, ICC/IF, IHC-P, IP, WB, ChIP
C GTX102965	p53 antibody	Rb pAb	Hu	ICC/IF, IHC-P, IP, WB, ChIP
GTX70214	p53 antibody [D01]	Ms mAb	Hu	IHC-Fr, IHC-P, IP, WB, ChIP
C GTX70216	p53 antibody [Pab1801]	Ms mAb	Hu	ELISA, FACS, IHC-Fr, IHC-P, IP, RIA, WB, ChIP
C GTX70220	p84 antibody [5E10]	Ms mAb	Hu, Ms, Rat, Mk	ICC/IF, IHC, IP, WB, ChIP
GTX113945	PAD4 antibody	Rb pAb	Hu	ICC/IF, IHC-P, WB, ChIP
GTX101583	PAX8 antibody	Rb pAb	Hu	ICC/IF, IHC-P, IP, WB, ChIP
GTX23768	PRMT1 antibody	Rb pAb	Hu	ELISA, WB, ChIP
GTX23763	PRMT2 antibody	Rb pAb	Hu	ELISA, WB, ChIP
C GTX119726	pygopus 2 antibody	Rb pAb	Hu, Ms	ICC/IF, IHC-P, IP, WB, ChIP
C GTX70232	RbAp48 antibody [11G10]	Ms mAb	Hu, Ms	Blocking, ICC/IF, IP, WB, Functional , ChIP
C GTX70234	RbAp48 antibody [13D10]	Ms mAb	Hu	ICC/IF, IHC, IP, WB, ChIP
GTX20817	RNA polymerase II antibody [8WG16]	Ms mAb	Hu, Ms, Cow, XI	Puri, WB, ChIP
GTX111131	SMAD2 antibody	Rb pAb	Hu	ICC/IF, IP, WB, ChIP
GTX111123	SMAD3 antibody	Rb pAb	Hu	ICC/IF, IHC-P, IP, WB, ChIP
C GTX70250	SRC1 antibody [1135]	Ms mAb	Hu, Ms, Mk, Rat	IP, WB, ChIP
GTX113273	STAT6 antibody	Rb pAb	Hu, Ms	IHC-P, IP, WB, ChIP
GTX25264	SUV39H2 antibody, C-term	Gt pAb	Hu, Ms, Cow, Dog, Pig, Rat	ELISA, ChIP
GTX48659	TAF1 antibody	Rb pAb	Hu, Ms, Rat	ELISA, WB, ChIP
GTX627420	TET1 antibody [GT1462]	Ms mAb	Hu	ICC/IF, IHC-P, IP, WB, ChIP
C GTX124207	TET1 antibody [N3C1]	Rb pAb	Hu	ICC/IF, IHC-P, WB, ChIP

★ See website for more products and detailed information.

C Citation



International

Tel 886.3.6208988
 Fax 886.3.6209098
 Address 6F-2, No.89, Dongmei Rd., Hsinchu 300, Taiwan (R.O.C.)
 E-mail info@genetex.com

USA

Toll-free 1.877.GeneTex(1.877.436.3839)
 Fax 1.949.309.2888
 Address 2456 Alton Parkway, Irvine, CA 92606 USA
 E-mail info@genetex.com



Welcome to GeneTex
www.genetex.com