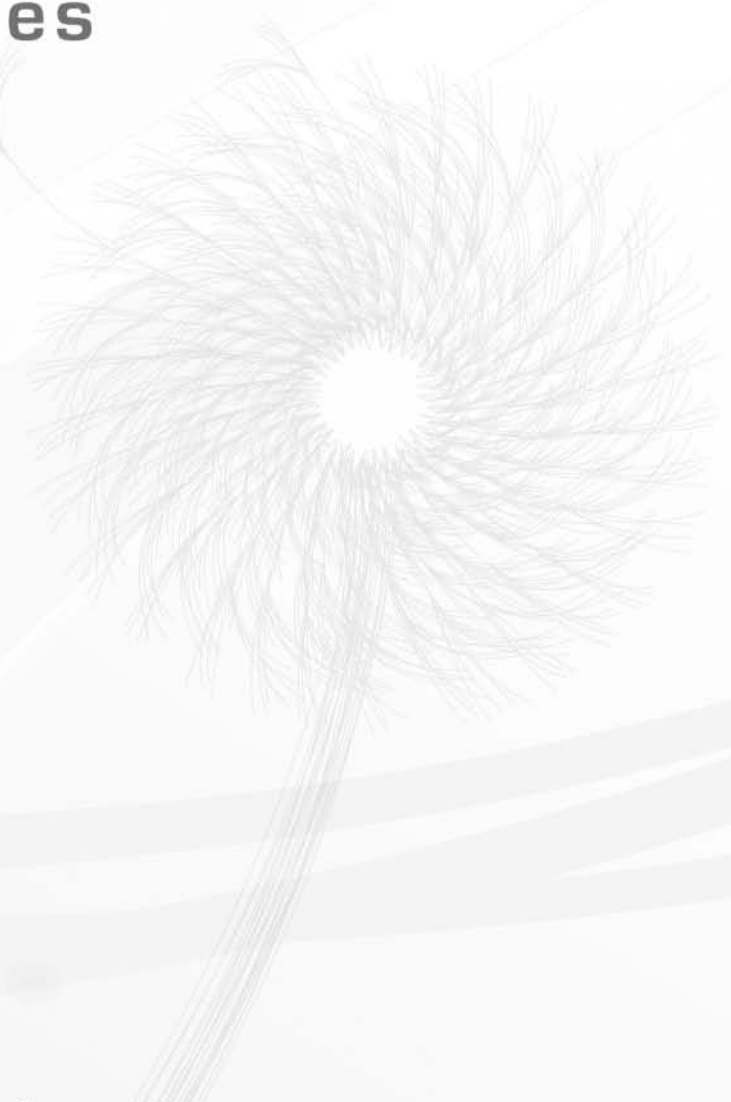


Apoptosis



Antibodies, Assay Kits and Reagents

Quality Antibodies
Quality Results





The Company

GeneTex produces high quality antibodies validated through extensive research, development, and testing. Our staff and researchers have collectively earned a trusted reputation from the research community for the quality and reliability of our antibodies. The secret to our success is the complementation of scientific expertise and production mastery in our state-of-the-art laboratory and animal facility.

Our facility provides large-scale antibody production capabilities, which employ highly specific antigen affinity purification. This has facilitated the establishment of a comprehensive antibody collection covering a wide spectrum of research fields.

Because of GeneTex's extensive experience in antibody manufacturing, we are uniquely able to serve the demands of the scientific community by providing accurate technical support and reliable customer service.



Table of Contents

Apoptosis Overview	02
Apoptosis Inducers	03
Extrinsic Pathway: Death Receptors	04
Intrinsic Pathway: Mitochondrial Changes	
-Mitochondrial Apoptogenic Factors	07
-Bcl-2 Family	08
Membrane Changes	12
Caspases & Caspase Substrates	13
DNA Fragmentation	18
Metabolic Activity	19
Cytosolic Apoptosis inhibitors	19

Application Key

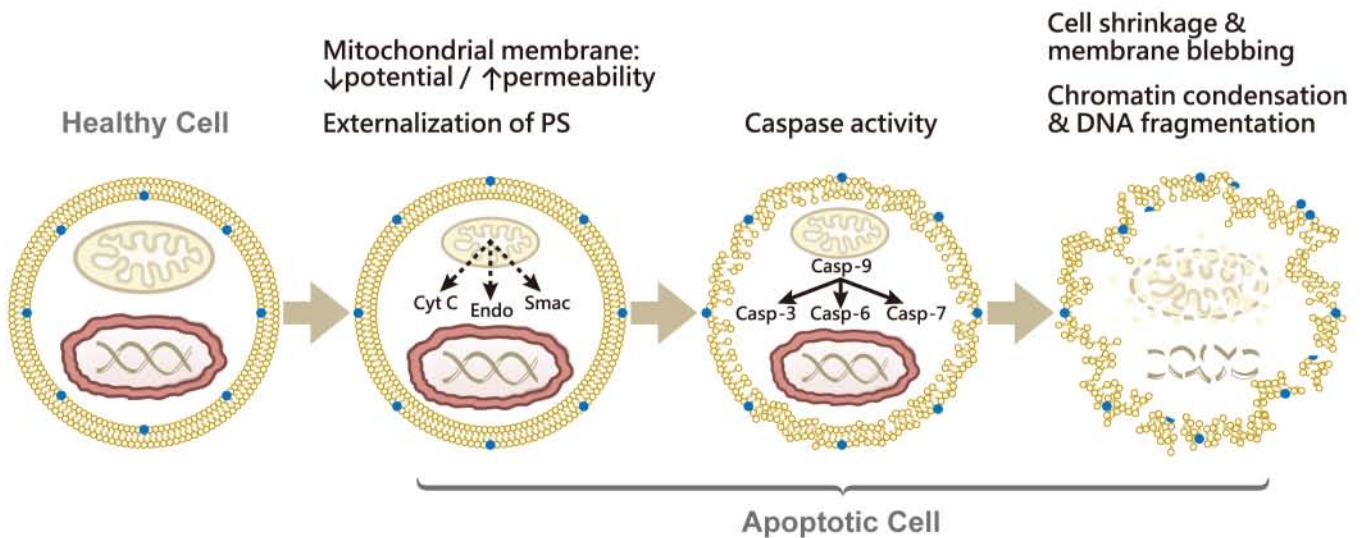
- Apuri** - Affinity purification
- Blocking** - Blocking
- Dot** - Dot blot
- DID** - Double immunodiffusion
- ELISA** - Enzyme-linked immunosorbent assay
- ELISA-Ag** - Enzyme-linked immunosorbent assay using antigen
- EM** - Electron microscopy
- FACS** - Fluorescence-activated cell sorting
- FuncS** - Functional studies
- IA**- Immunoassay
- ICC/IF** - Immunocytochemistry / Immunofluorescence
- IHC**- Immunohistochemistry
- IHC-Fr** - Immunohistochemistry (Frozen sections)
- IHC-M** - Immunohistochemistry (Methylmethacrylate sections)
- IHC-P** - Immunohistochemistry (Paraffin-embedded sections)
- IP** - Immunoprecipitation
- Neut** - Neutralizing
- RIA** - Radioimmunoassay
- WB** - Western Blot

Host & Reactivity Key

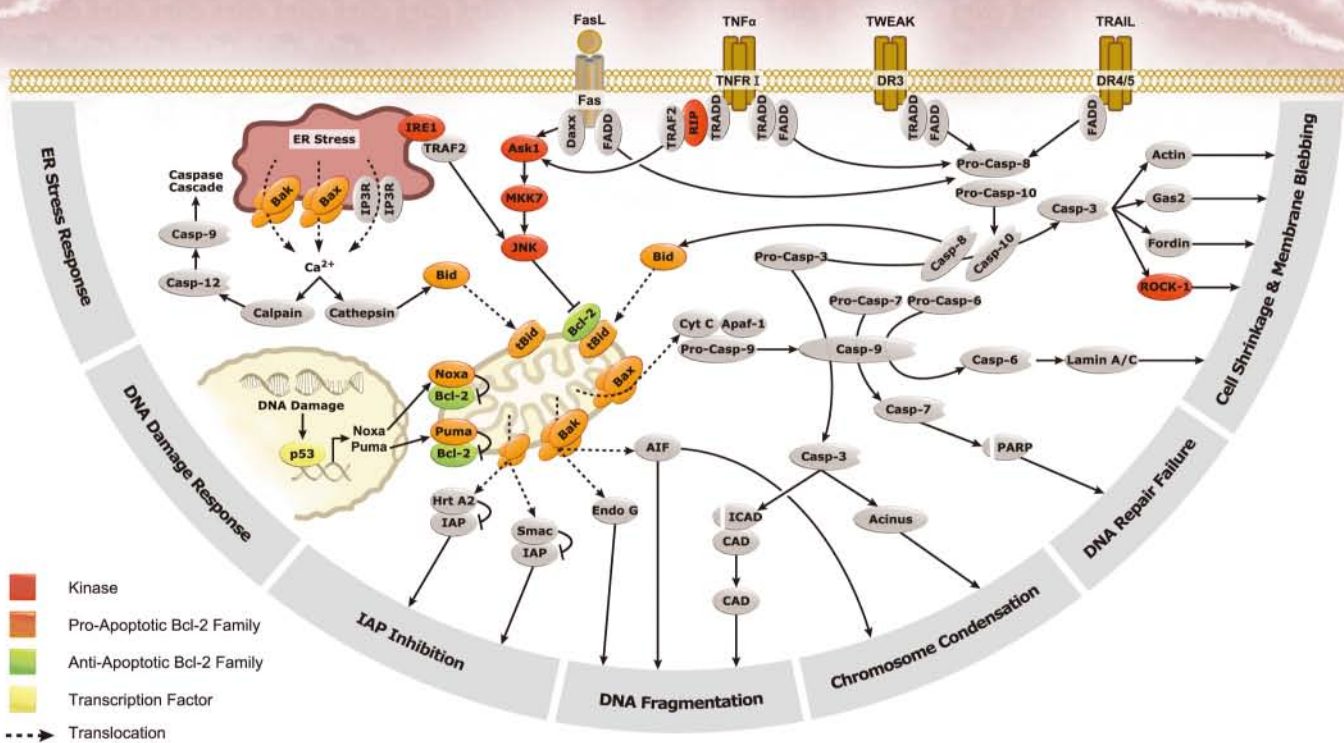
- Cat** - Cat
- Cow** - Cow
- Dog** - Dog
- Gt** - Goat
- Hm** - Hamster
- Hu** - Human
- Mk** - Monkey
- Ms** - Mouse
- Pig** - Pig
- Rat** - Rat
- Rb** - Rabbit

Apoptosis Overview

Apoptosis, or programmed cell death, is the process by which a cell undergoes a series of biochemical changes that ultimately lead to its death. These changes include the loss of mitochondrial membrane potential and membrane integrity, changes in the composition of the plasma membrane, diminished metabolic activity, and DNA fragmentation. Initiation of apoptosis is regulated by the balance of pro- and anti-apoptotic signals within the cell, including the opposing actions of various Bcl-2 family members. This balance can be tipped in favor of apoptosis through activation of either the intrinsic or extrinsic pathway. The intrinsic, or mitochondrial pathway, is activated in response to cellular stresses including DNA damage and ER stress. The extrinsic pathway is activated in response to extracellular stimuli through the action of death receptors. These pathways converge through the activation of the proapoptotic Bcl-2 family member Bid. The proteolytic family of caspase proteins mediates the cleavage of various cellular substrates that then facilitate DNA fragmentation, cell shrinking, and membrane blebbing. Apoptosis plays a critical role in developmental biology, neuroscience, and immunology, and defects or imbalances in this pathway often result in cancer progression.



● Phospholipid phosphatidylserine (PS)



Apoptosis Inducers

Apoptosis Inducers

Cat. No.	Product
GTX47933	Set of 5 Apoptosis Inducers (1,000X)
GTX47938	Actinomycin D (1,000X)
GTX47937	Camptothecin (1,000x)

Cat. No.	Product
GTX47936	Cycloheximide (1,000X)
GTX47935	Dexamethasone (1,000X)
GTX47934	Etoposide (1,000x)

Extrinsic Pathway: Death Receptors

The extrinsic pathway of apoptosis results from the activation of death receptors by extracellular signals. Death receptors are cell surface receptors that are members of the tumor necrosis factor receptor (TNFR) family. This family includes Fas, TNFRI, DR3 and DR4/5, which recognize the ligands FasL, TNF α , TWEAK and TRAIL, respectively. Upon ligand binding, the cytoplasmic death domain (DD) on these receptors recruits the adaptor protein Fas-associated death domain (FADD) either directly or with the assistance of TNFR-associated death domain (TRADD). FADD then recruits pro-caspase-8 and pro-caspase-10 to form the death-inducing signaling complex (DISC), which induces the proteolytic autoactivation of caspases-8 and -10. These activated caspases directly activate downstream effector caspases and also converge on the intrinsic pathway by activating the Bcl-2 family member Bid to trigger cytochrome c release from the mitochondria.

Ligand proteins

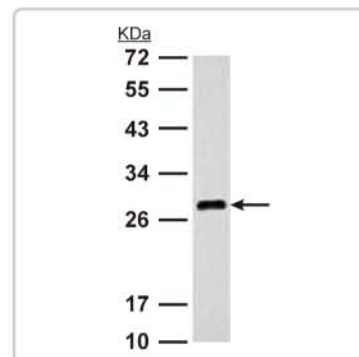
Cat. No.	Product	Species	Application
GTX29642	TNF α protein	Hu	Apuri, Blocking, ELISA, FuncS
GTX65390	TNF α protein	Ms	Apuri, Blocking, ELISA, FuncS
GTX65409	TNF α protein	Rat	Apuri, Blocking, ELISA, FuncS
GTX65293	TWEAK protein	Hu	Apuri, Blocking, ELISA, FuncS
GTX65295	TRAIL protein	Hu	Apuri, Blocking, ELISA, FuncS

TNF α and TNFR

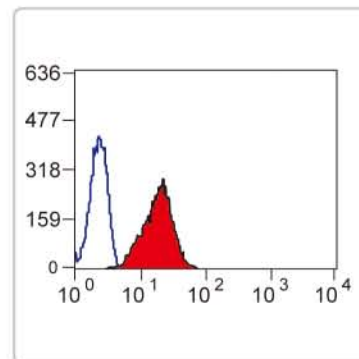
Cat. No.	Product	Host & Clonality	Reactivity	Application
GTX110520	TNF α antibody	Rb pAb	Hu	IHC-P, WB
GTX27742	TNF α antibody	Rb pAb	Hu, Mk	FACS, IA, WB
GTX26671	TNF α antibody	Rb pAb	Hu	ELISA, ICC/IF, IHC-Fr, IHC-P, Neut, WB
GTX28348	TNF α antibody [2C8]	Ms mAb	Hu	ELISA, IHC-Fr, IHC-P
GTX38912	TNF α antibody [MP6-XT22]	Rat mAb	Ms, Rat	ELISA, FACS, IHC-Fr, FuncS
GTX10949	TNF α antibody	Gt pAb	Hu	ELISA, IHC-P, Neut, WB
GTX102718	TNFR1 antibody	Rb pAb	Hu	IHC-P, WB
GTX27630	TNFR1 antibody	Rb pAb	Hu	Dot, ELISA, FACS, IP, RIA, WB
GTX74902	TNFR1 antibody [H398]	Ms mAb	Hu, Rb	ELISA, FACS, RIA, WB
GTX15563	TNFR2 antibody	Rb pAb	Hu, Ms, Rat	IHC-P, IP, WB
GTX27744	TNFR2 antibody	Rb pAb	Hu	FACS, IA, IP, WB
GTX10503	TNFR2 antibody [22221.311]	Ms mAb	Hu	ELISA, Neut, WB
GTX10502	TNFR2 antibody	Gt pAb	Hu	ELISA, WB

FasL and Fas / CD95

Cat. No.	Product	Host & Clonality	Reactivity	Application
GTX42344	FasL antibody [14C2]	Ms mAb	Hu	ELISA, FACS, IP
GTX42340	FasL antibody [MFL4]	Hm mAb	Ms, Rat	FACS
GTX116024	Fas / CD95 antibody	Rb pAb	Hu	WB
GTX22440	Fas / CD95 antibody	Rb pAb	Hu, Ms, Rat	ICC/IF, IHC-Fr, IHC-P, WB
GTX13550	Fas / CD95 antibody	Rb pAb	Hu, Ms, Cow, Dog, Hm, Mk, Rb, Rat, Sh, Xi	FACS, WB



TNF α antibody (GTX110520):
WB analysis of Raji cell lysate.



FasL antibody [14C2] (GTX42344):
FACS analysis of permeabilized Jurkat cells with GTX42344 (red).

FasL and Fas / CD95

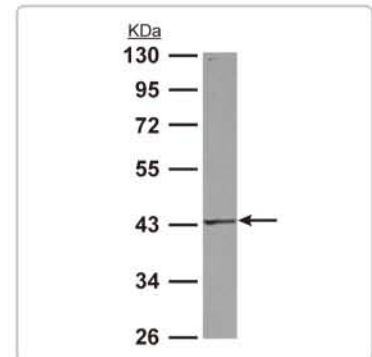
Cat. No.	Product	Host & Clonality	Reactivity	Application
GTX42820	Fas / CD95 antibody [IPO-4]	Ms mAb	Hu	ELISA, IP
GTX13549	Fas / CD95 antibody [ZB4]	Ms mAb	Hu	FACS, IHC, WB
GTX16104	Fas / CD95 antibody [H11]	Rat mAb	Hu, Ms, Cat, Dog	FACS, ICC/IF, WB

TWEAK and DR3

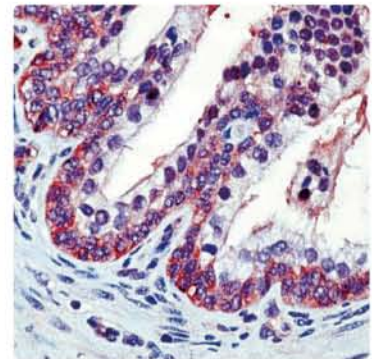
Cat. No.	Product	Host & Clonality	Reactivity	Application
GTX38736	TWEAK antibody	Rb pAb	Hu	WB
GTX38851	TWEAK antibody [CARL-1]	Ms mAb	Hu	FACS, IHC-Fr
GTX38850	TWEAK antibody [MTW-1]	Rat mAb	Ms	FACS
GTX105713	DR3 antibody	Rb pAb	Hu	IHC-P, WB
GTX41357	DR3 antibody	Rb pAb	Hu, Ms	WB
GTX62953	TWEAKR antibody [EPR3179]	Rb mAb	Hu, Ms, Rat	IHC, IP, WB
GTX42178	TWEAKR antibody [ITEM-1]	Ms mAb	Hu	FACS, IHC-Fr, WB

TRAIL and DR4 / 5

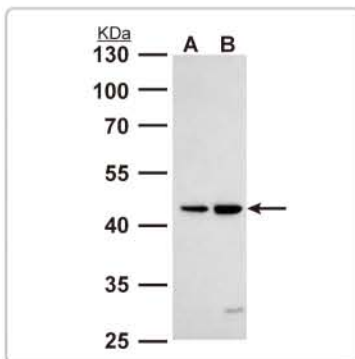
Cat. No.	Product	Host & Clonality	Reactivity	Application
GTX113043	TRAIL antibody	Rb pAb	Hu	WB
GTX29959	TRAIL antibody	Rb pAb	Hu	ELISA, Neut, WB
GTX22435	TRAIL antibody	Rb pAb	Hu, Ms, Rat	IHC-Fr, IP, WB
GTX10516	TRAIL antibody [75411.11]	Ms mAb	Hu	ELISA, Inhib, Neut, WB
GTX28414	DR4 antibody	Rb pAb	Hu, Ms, Rat	IHC-P, WB
GTX11931	DR4 antibody [32A1380]	Ms mAb	Hu	WB
GTX14738	DR4 antibody [DR-4-02]	Ms mAb	Hu	FACS, IP
GTX102436	DR5 antibody	Rb pAb	Hu	WB
GTX28416	DR5 antibody	Rb pAb	Hu, Ms	IHC-P, WB
GTX80178	DR5 antibody [DR5-01-1]	Ms mAb	Hu	FACS
GTX21675	DR5 antibody	Gt pAb	Hu, Ms	ELISA, ICC/IF, WB



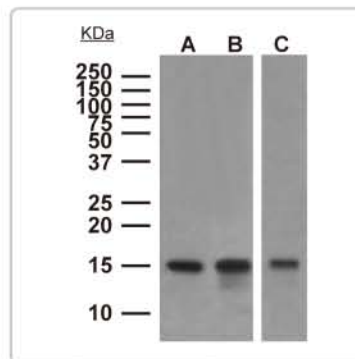
CD95 antibody (GTX116024):
WB analysis of K562 cell lysate.



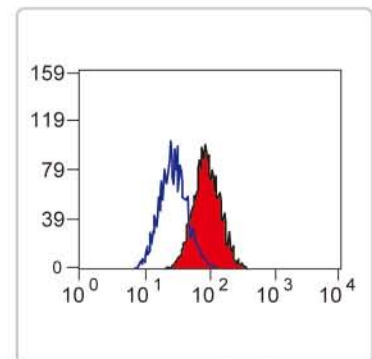
Fas / CD95 antibody (GTX21873):
IHC analysis of human tonsil tissue.



DR3 antibody (GTX105713):
WB analysis of (A) Raji and (B) K562 cell lysates.



TWEAKR / Fn14 antibody [EPR3179] (GTX62953):
WB analysis of (A) HT-29, (B) HUVEC, and (C) HT-1080 cell lysates.

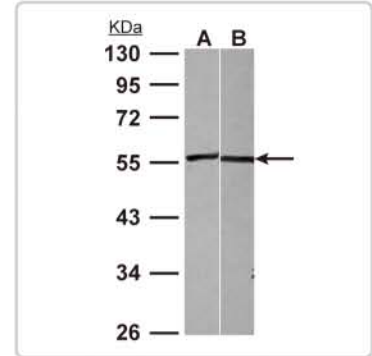


DR4 antibody [DR-4-02] (GTX14738):
FACS analysis of HeLa cells with GTX14738 (red).

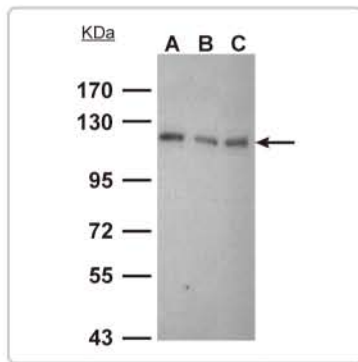
Extrinsic Pathway: Death Receptors

Death Receptor Associated Proteins

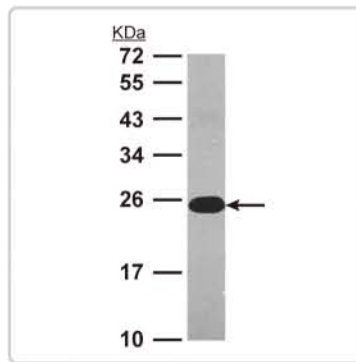
	Cat. No.	Product	Host & Clonality	Reactivity	Application
DAXX	GTX112908	DAXX antibody	Rb pAb	Hu	ICC/IF, IHC-P, WB
	GTX83312	DAXX antibody [7A11]	Ms mAb	Hu	ELISA, FACS, ICC/IF
	GTX80185	DAXX antibody [DAXX-03]	Ms mAb	Hu	ICC/IF, IP, WB
FADD	GTX116064	FADD antibody	Rb pAb	Hu	ICC/IF, IHC-P, WB
	GTX73104	FADD antibody	Rb pAb	Hu, Ms, Rat	IHC-P
	GTX84542	FADD antibody [1C11]	Ms mAb	Hu	FACS, WB
	GTX10519	FADD antibody [FD19]	Ms mAb	Hu	ELISA, IP
TRADD	GTX104695	TRADD antibody	Rb pAb	Hu	ICC/IF, IHC-P, WB
	GTX59659	TRADD antibody	Rb pAb	Hu, Ms, Rat	IHC, IP
TRAF2	GTX111138	TRAF2 antibody	Rb pAb	Hu	ICC/IF, IHC-P, WB
	GTX89120	TRAF2 antibody	Gt pAb	Hu, Ms, Dog, Rat	ELISA, WB
RIP	GTX111074	RIP antibody	Rb pAb	Hu	ICC/IF, WB
	GTX22563	RIP antibody	Rb pAb	Hu, Ms, Rat	WB
	GTX59864	RIP antibody	Rb pAb	Hu, Ms, Rat	IHC, IP
RAIDD	GTX74359	RAIDD antibody	Rb pAb	Hu	WB



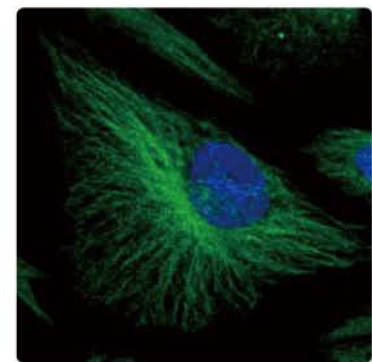
DR5 antibody (GTX102436):
WB analysis of (A) HeLa and (B) HCT116 cell lysates.



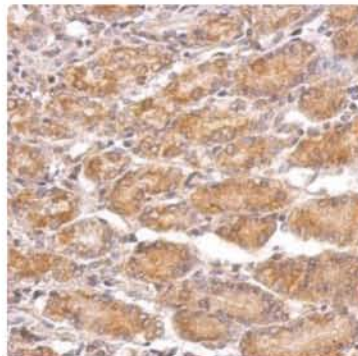
DAXX antibody (GTX112908):
WB analysis of (A) A431, (B) H1299 and (C) Raji cell lysates.



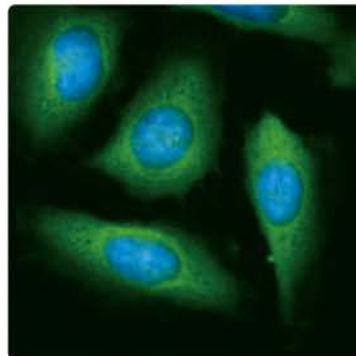
FADD antibody (GTX116064):
WB analysis of A549 cell lysate.



TRADD antibody (GTX104695):
Confocal IF analysis of methanol-fixed HeLa cells.



TRADD antibody (GTX104695):
IHC-P analysis of colon carcinoma.



RIP antibody (GTX111074):
ICC/IF analysis of methanol-fixed HeLa cells.

Intrinsic Pathway: Mitochondrial Changes

Mitochondrial permeability is a key step in apoptosis. Disruption of mitochondrial membrane potential increases mitochondrial membrane permeability, resulting in the release of various cellular apoptosis-inducing factors, including cytochrome c, AIF, and Smac. Once released into the cytosol, cytochrome c associates with cytoplasmic Apaf-1 to form a structure called the apoptosome, which then recruits and activates caspase-9 to initiate the caspase cascade. Mitochondrial potential is regulated by the opposing actions of pro- and anti-apoptotic members of the Bcl-2 family. The pro-apoptotic Bax-like subfamily promotes apoptosis by forming pores in the mitochondrial outer membrane and regulating mitochondrial cytochrome c release. Anti-apoptotic proteins, such as Bcl-2, contain a transmembrane Bcl-2 homology (BH) domain, which mediates their localization to the mitochondrial membrane where they inhibit apoptosis by interacting with and sequestering pro-apoptotic family members. Many of the cellular signaling pathways involving death receptors, growth factor receptors, and DNA damage sensors converge on Bcl-2 family members to modulate the induction of apoptosis through the loss of mitochondrial potential.

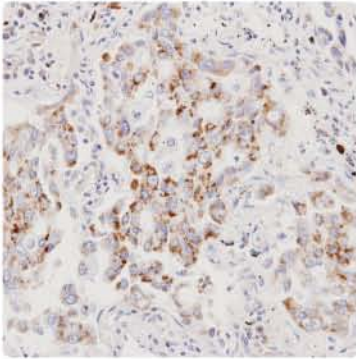
Mitochondrial Apoptosis Detection Kits

Cat. No.	Product	Features
GTX85581	MitoLume Mitochondrial Apoptosis Detection Kit	* Takes ~ 30 minutes. * Detection: In healthy cells, MitoLume accumulates and aggregates in the mitochondria, giving off a bright red fluorescence (EX/Em = 488/590+ 42 nm). In apoptotic cells, MitoLume remains in the cytoplasm in a fluorescent green form (Ex/Em = 488/530+ 30 nm).
GTX85531	Cytochrome c Release Assay Kit	* Takes ~ 3 hour. * Detection: WB.

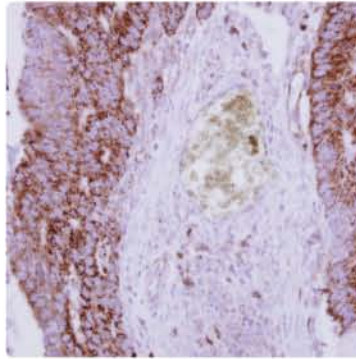
Mitochondrial Apoptogenic Factors

	Cat. No.	Product	Host & Clonality	Reactivity	Application
AIF	GTX102399	AIF antibody	Rb pAb	Hu	ICC/IF, IHC-P, WB
	GTX113306	AIF antibody	Rb pAb	Hu, Ms	ICC/IF, IHC-P, WB
Cyt C	GTX108585	Cytochrome C antibody	Rb pAb	Hu, Ms, Rat	ICC/IF, IHC-P, WB
	GTX59718	Cytochrome C antibody	Rb pAb	Hu, Ms, Ch, Dog, Rat, Bo	IP, WB
	GTX23255	Cytochrome C antibody [6H2.B4]	Ms mAb	Hu, Ms, Rat	EM, IHC-Fr, IP
Endo G	GTX114385	Endo G antibody	Rb pAb	Hu, Ms	WB
	GTX84986	Endo G antibody [7F2D7]	Ms mAb	Hu, Ms, Rat	ELISA, WB
	GTX84988	Endo G antibody [7G1C10]	Ms mAb	Hu, Ms, Rat	ELISA, WB
HtrA2	GTX110703	HtrA2 antibody	Rb pAb	Hu	IHC-P, WB
	GTX37250	HtrA2 antibody	Ms mAb	Hu	ELISA, WB
Smac / Diablo	GTX106746	Smac antibody	Rb pAb	Hu	IHC-P, WB
	GTX113108	Smac antibody	Rb pAb	Hu	IHC-P, WB
	GTX23930	Smac / Diablo antibody	Rb pAb	Hu, Ms, Rat	WB
	GTX30249	Smac/ Diablo antibody [78-1-118]	Ms mAb	Hu, Ms, Rat	WB

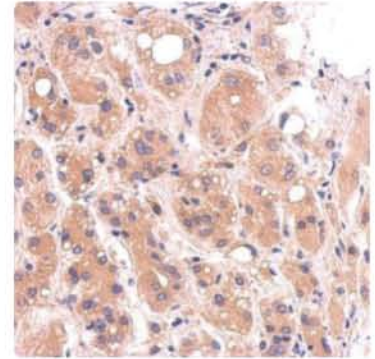
Intrinsic Pathway: Mitochondrial Changes



AIF antibody (GTX102399):
IHC-P analysis of lung cancer tissue.

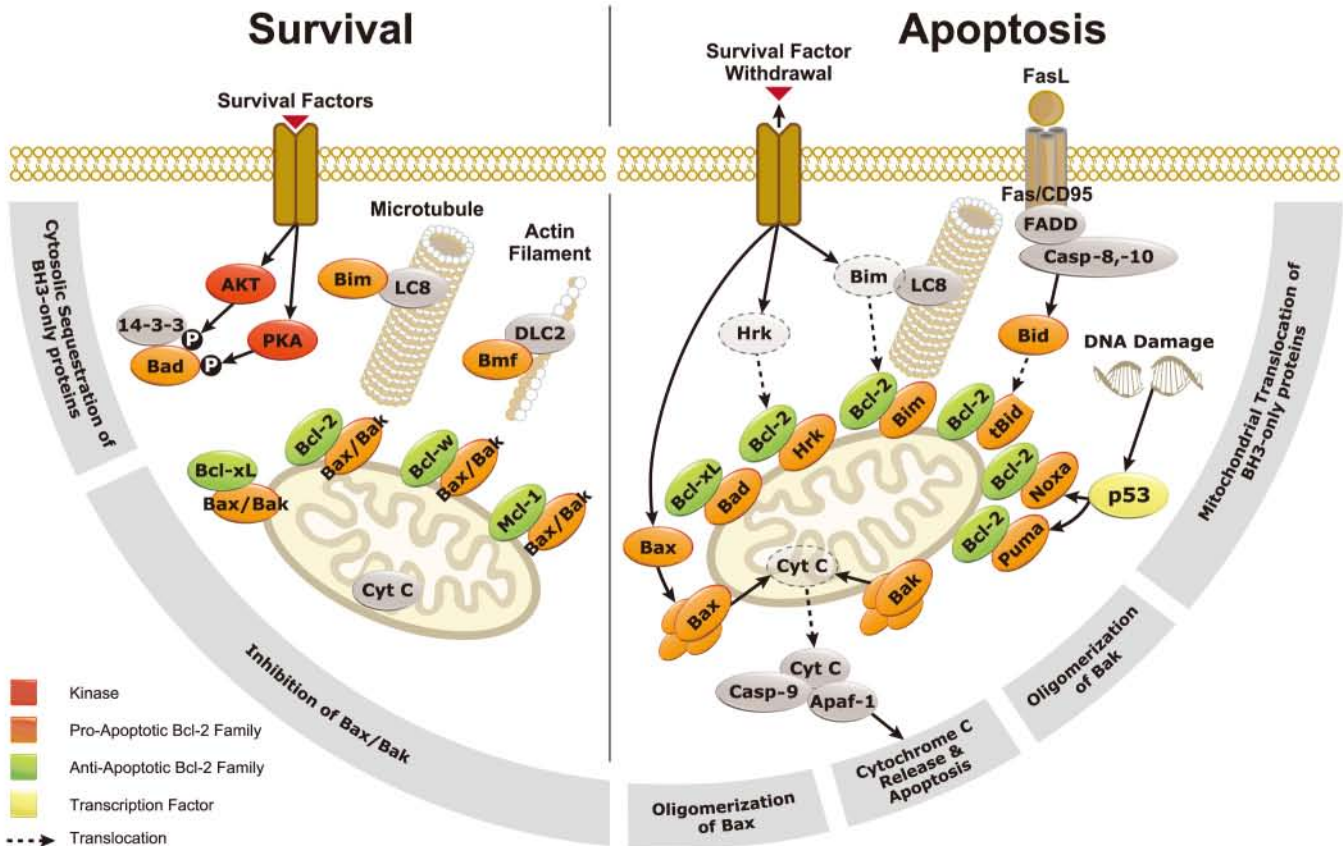


Cytochrome C antibody (GTX108585):
IHC-P analysis of colon carcinoma.



Smac antibody (GTX113108):
IHC-P analysis of hepatoma.

Bcl-2 Family



Antibody Panels

Cat. No.	Product	Content	Reactivity	Application
GTX300026	Bcl-2 Family Antibody Panel for General Apoptosis Research	Bcl-2 antibody	Hu	FACS, ICC/IF, IHC-P, IP, WB
		Bcl-X antibody	Hu, Ms, Rat	ICC/IF, IHC-P, WB
		MCL1 antibody	Hu	ICC/IF, IHC-P, WB
		Bad antibody	Hu, Ms, Rat	FACS, ICC/IF, IHC-P, IP, WB
		Bak antibody	Hu	IHC-P, WB
		Bax antibody	Hu, Rat	ICC/IF, WB
		Puma antibody	Hu	FACS, ICC/IF, IHC-P, IP, WB
		Rabbit IgG antibody (HRP)	Rb	ELISA, WB
GTX300024	Bcl-2 Family Antibody Panel for Anti-apoptosis	Bcl-2 antibody	Hu	FACS, ICC/IF, IHC-P, IP, WB
		Bcl-X antibody	Hu, Ms, Rat	ICC/IF, IHC-P, WB
		BCL2L10 antibody	Hu	ICC/IF, IHC-P, WB
		Bfl1 antibody	Hu, Ms	FACS, ICC/IF, IHC-P, WB
		MCL1 antibody	Hu	ICC/IF, IHC-P, WB
GTX300025	Bcl-2 Family Antibody Panel for Pro-apoptosis	Rabbit IgG antibody (HRP)	Rb	ELISA, WB
		Bcl-X antibody	Hu, Ms, Rat	ICC/IF, IHC-P, WB
		Bax antibody	Hu, Rat	ICC/IF, WB
		Bak antibody	Hu	IHC-P, WB
		Bid antibody	Hu	ICC/IF, IHC-P, WB
		Bad antibody	Hu, Ms, Rat	FACS, ICC/IF, IHC-P, IP, WB
		Bim antibody	Hu	ICC/IF, IHC-P, IP, WB
		Puma antibody	Hu	FACS, ICC/IF, IHC-P, IP, WB
		Rabbit IgG antibody (HRP)	Rb	ELISA, WB
		GTX300091	Pro-apoptosis Protein Antibody Panel	Alf antibody
Bax antibody	Hu, Ms, Rat			IHC-P, IP, WB
Bcl-XS antibody	Hu			IHC-P, WB
p53 antibody [D01]	Hu			IHC-Fr, IHC-P, IP, WB
		Rabbit IgG antibody (HRP)	Rb	ELISA, WB

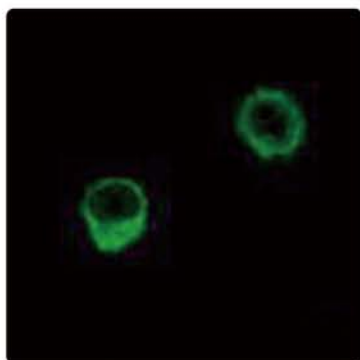
Anti-apoptotic Members

	Cat. No.	Product	Host & Clonality	Reactivity	Application
Bcl-2	GTX100064	Bcl-2 antibody	Rb pAb	Hu, Rat	IHC-P, WB
	GTX27973	Bcl-2 antibody	Rb pAb	Hu, Ms, Rat	IHC-Fr, IP, WB
	GTX20694	Bcl-2 antibody [124]	Ms mAb	Hu	IHC-Fr, IHC-P, IP, WB
	GTX15182	Bcl-2 antibody [SPM117]	Ms mAb	Hu	FACS, ICC/IF, IHC-P, IP, WB
	GTX89719	Bcl-2 antibody	Gt pAb	Hu, Ms, Dog, Rat	ELISA, WB
	GTX16120	Bcl-2 antibody	Sh pAb	Hu, Dog, Rat	ICC/IF, IP, WB
	GTX85613	Bcl-2 (phospho T56) antibody	Rb pAb	Hu	IHC-P, WB
	GTX21905	Bcl-2 (phospho S70) antibody	Rb pAb	Hu	ELISA, IHC-P
Bcl2A1 / Bfl1	GTX82541	Bcl2A1 antibody	Rb pAb	Hu	ELISA, FACS, IHC, WB
	GTX111872	Bcl-B antibody	Rb pAb	Hu	ICC/IF, IHC-P, WB
Bcl-B	GTX113911	Bcl-B antibody	Rb pAb	Hu	ICC/IF, IHC-P, WB
	GTX81254	Bcl-rambo antibody	Rb pAb	Hu	ELISA, WB
Bcl-rambo	GTX17257	Bcl-rambo antibody [Rocky-1]	Ms mAb	Hu	ICC/IF, IP, WB
	GTX16096	Bcl-rambo antibody [Rocky-2]	Ms mAb	Hu	ICC/IF, IP, WB
Bcl-W	GTX13525	Bcl-W antibody	Rb pAb	Hu, Ms, Cow, Mk, Rat	IP, WB
	GTX10521	Bcl-W antibody [90316.11]	Ms mAb	Hu, Ms	Dot

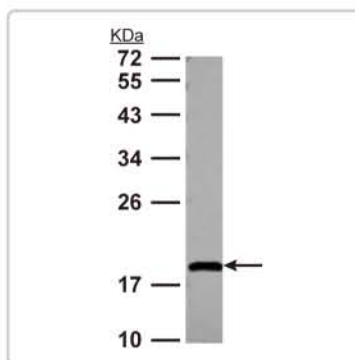
Intrinsic Pathway: Mitochondrial Changes

Anti-apoptotic Members

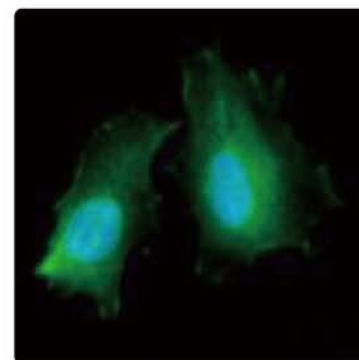
	Cat. No.	Product	Host & Clonality	Reactivity	Application
Bcl-X	GTX100632	Bcl-X antibody	Rb pAb	Hu, Ms, Rat	ICC/IF, IHC-P, WB
	GTX105661	Bcl-X antibody	Rb pAb	Hu, Ms, Rat	ICC/IF, IHC-P, WB
	GTX23193	Bcl-X antibody [2H12]	Ms mAb	Hu, Ms, Pig, Rat	FACS, ICC/IF, IHC-P, IP
	GTX46035	Bcl-X antibody [7B2.5] (PE)	Ms mAb	Hu, Ms	FACS, IP, WB
	GTX17834	Bcl-X antibody [SPM165]	Ms mAb	Hu, Ms	FACS, ICC/IF, IHC-P
	GTX59678	Bcl-XL antibody	Rb pAb	Hu, Ms, Rat	IP, WB
	GTX84834	Bcl-XL antibody [4A9]	Ms mAb	Hu	ICC/IF, WB
	GTX124266	Bcl-XS antibody	Rb pAb	Hu	IHC-P, WB
Mcl-1	GTX102026	Mcl-1 antibody	Rb pAb	Hu	ICC/IF, IHC-P, WB
	GTX83388	Mcl-1 antibody [8C6, 8C6D4B1]	Ms mAb	Hu	ELISA, ICC/IF, IHC
	GTX73798	Mcl-1 antibody [RC13]	Ms mAb	Hu	IHC-P



Bcl-X antibody (GTX105661):
ICC/IF analysis of methanol-fixed A549 cells.



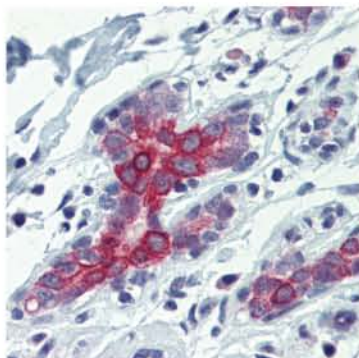
Bcl-XS antibody (GTX124266):
WB analysis of A549 cell lysates.



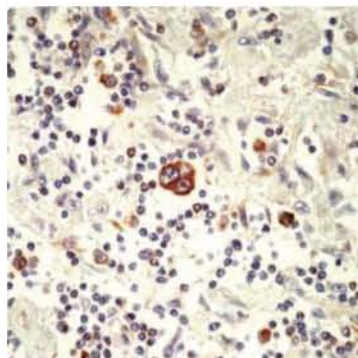
Mcl-1 antibody (GTX102026):
ICC/IF analysis of PFA-fixed HeLa cells (co-stained with Hoechst 33342).

Pro-apoptotic Members

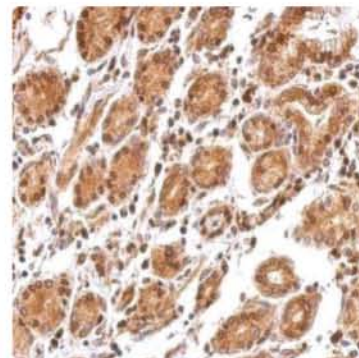
	Cat. No.	Product	Host & Clonality	Reactivity	Application
Bak	GTX100063	Bak antibody	Rb pAb	Hu	IHC-P, WB
	GTX10808	Bak antibody [TC100]	Ms mAb	Hu	IHC-Fr, WB
	GTX89942	Bak antibody	Gl pAb	Hu, Ms, Pig, Rat	ELISA, WB
Bax	GTX109683	Bax antibody	Rb pAb	Hu, Rat	ICC/IF, WB
	GTX73929	Bax antibody [2D2]	Ms mAb	Hu	IHC-P, IP, WB
	GTX23191	Bax antibody [5B7]	Ms mAb	Ms	ICC/IF, WB
	GTX16910	Bax antibody [ID3]	Ms mAb	Hu	ICC/IF, IP, WB
Bcl-G	GTX70401	Bcl-G antibody	Rb pAb	Hu	WB
Bfk	GTX110988	Bfk / BCL2L15 antibody	Rb pAb	Hu	IHC-P, WB
Bok	GTX22304	Bok antibody	Rb pAb	Ms, Rat	WB
	GTX59628	Bok antibody	Rb pAb	Ms, Rat	WB



Bak antibody (GTX100063):
IHC-P analysis of liver tissue.



Bax antibody [2D2] (GTX73929):
IHC analysis of human Hodgkin's lymphoma.



Bcl2L12 antibody (GTX112088):
IHC-P analysis of colon carcinoma.

BH3-only Members

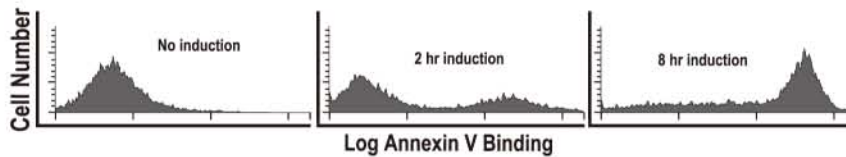
	Cat. No.	Product	Host & Clonality	Reactivity	Application
Bad	GTX50417	Bad antibody	Rb pAb	Hu, Ms, Rat	IHC, WB
	GTX59615	Bad antibody	Rb pAb	Hu, Ms, Mk, Rat	IHC, IP
	GTX86887	Bad (cleaved Asp71) antibody	Rb pAb	Ms, Rat	ELISA, IHC, WB
	GTX79127	Bad (phospho S112) antibody	Rb pAb	Hu, Ms	IHC, WB
	GTX25687	Bad (phospho S128) antibody	Rb pAb	Hu, Ms, Rat	WB
	GTX38680	Bad (phospho S136) antibody	Rb pAb	Hu, Ms, Rat	IHC-P
Bcl2L12	GTX79126	Bad (phospho S155) antibody	Rb pAb	Hu, Ms	IHC, WB
	GTX112088	Bcl2L12 antibody	Rb pAb	Hu	ICC/IF, WB
Bid	GTX110568	Bid antibody	Rb pAb	Hu	ICC/IF, IHC-P, WB
	GTX22388	Bid antibody	Rb pAb	Hu	IHC-Fr, IP, WB
	GTX25498	Bid antibody	Rb pAb	Hu	WB
Bik	GTX82540	Bid antibody	Rb pAb	Ms	ELISA, FACS, IHC, WB
	GTX59922	Bik antibody	Rb pAb	Hu, Ms, Rat	WB
Bim	GTX50597	Bim antibody	Rb pAb	Hu, Ms, Rat	IHC, WB
	GTX84980	Bim antibody [1C2H4]	Ms mAb	Hu, Ms, Rat	ELISA, ICC/IF, WB
	GTX80137	Bim antibody [Ham151-149]	Hm mAb	Ms	FACS, ICC/IF, IP, WB
	GTX50308	Bim (phospho S69) antibody	Rb pAb	Hu, Ms, Rat	ICC/IF, IHC-P
Bmf	GTX74501	Bmf antibody	Rb pAb	Hu	WB
	GTX59683	Bmf antibody	Rb pAb	Hu, Ms, Rat	WB
Hrk	GTX59631	Hrk antibody	Rb pAb	Hu	WB
Noxa	GTX85521	Noxa antibody	Rb pAb	Hu, Ms, Rat	ELISA, IHC, WB
	GTX85835	Noxa antibody	Rb pAb	Hu, Ms, Rat	IHC-P, WB
	GTX13654	Noxa antibody [114C307]	Ms mAb	Hu	WB
Puma	GTX109675	Puma antibody	Rb pAb	Hu	IHC-P, WB
	GTX29643	Puma antibody	Rb pAb	Hu, Ms	WB
	GTX84991	Puma antibody [2A9G5]	Ms mAb	Hu, Ms, Rat	ELISA, WB

Membrane Changes

At the initiation of apoptosis, most cell types externalize phospholipid phosphatidylserine (PS), which is normally only expressed on the cytoplasmic side of the plasma membrane. Translocation of PS can be easily detected with fluorescence-conjugated Annexin V, a protein with a strong natural affinity for PS. GeneTex is proud to introduce a comprehensive line of apoptosis assay kits featuring Annexin V-conjugates for the fast detection of early apoptotic cells by either flow cytometry or fluorescence microscopy.

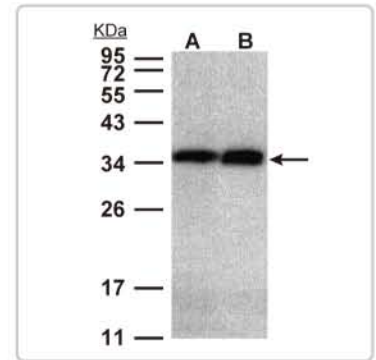
Annexin V-conjugate Apoptosis Detection Kits

Detection	Biotin	EGFP	FITC	Cy3	PE	Cy5
Cat. No.	GTX85587	GTX85588	GTX85591	GTX85590	GTX85586	GTX85589



Annexin V-EGFP Apoptosis Detection Kit (GTX85588):

Detection of apoptosis in Jurkat cells that were treated with the apoptosis inducer camptothecin (GTX47937) for various times as indicated. Results were analyzed by flow cytometry.

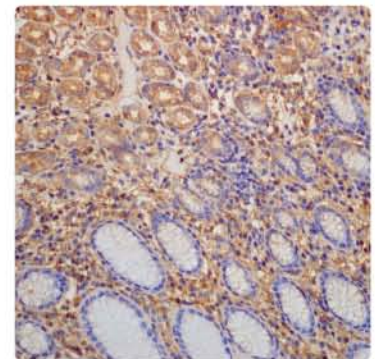


Annexin V antibody (GTX103250):

WB analysis of (A) HeLaS3 and (B) HepG2 cell lysates.

Annexin V

Cat. No.	Product	Host & Clonality	Reactivity	Application
GTX103250	Annexin V antibody	Rb pAb	Hu, Ms, Rat	ICC/IF, WB
GTX113384	Annexin V antibody	Rb pAb	Hu, Ms	WB
GTX59627	Annexin V antibody	Rb pAb	Hu, Ms, Rat	IHC, IP
GTX42766	Annexin V antibody [VAA-33]	Ms mAb	Hu	ELISA, FACS



Annexin V antibody (GTX62652):

IHC-P analysis of gastric tissue.



Caspases & Caspases Substrates

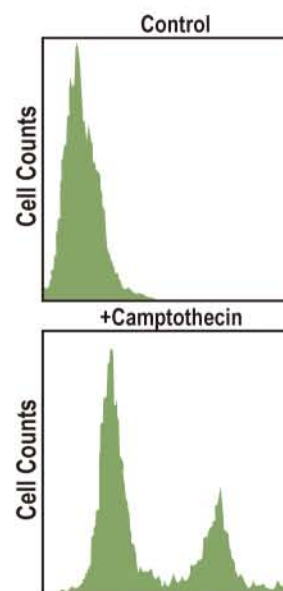
Caspases belong to a family of cysteine-aspartic acid proteases that play a critical role in the initiation of apoptosis in mammalian cells. Caspases, which are present as inactive pro-enzymes in normal cells, are proteolytically activated during apoptosis. These caspases can be classified as either initiator caspases (Casp-2, Casp-8, Casp-9 and Casp-10), which cleave and activate other caspases, or effector caspases (Casp-3, Casp-6 and Casp-7), which cleave other cellular substrates. The proteolytic activity of the effector caspases leads to cell shrinkage, membrane blebbing, chromatin condensation, DNA fragmentation and ultimately cell death.

Pan-Caspase Substrate / Activity Kits

Detection	Colorimetric assay	Fluorometric assay	For living cells		
	pNA	AFC	FITC	Sulfo-Rhodamine	Rhodamine 110
Casp-1, 2, 3, 5, 6, 8, 9	GTX85576	GTX85574			
Casp-1, 2, 3, 4, 5, 6, 8, 9, 10	GTX85577	GTX85575			
Caspases			GTX85572	GTX85571	GTX85573

Caspase Substrate / Activity Kits

Detection	Colorimetric assay	Fluorometric assay	Immuno assay	For living cells	
	pNA	AFC	AFC	FITC	Sulfo-Rhodamine
Caspase-1	GTX85570	GTX85569			
Caspase-2	GTX85562	GTX85561		GTX85559	
Caspase-3	GTX85558	GTX85557	GTX85533	GTX85555	GTX85554
Caspase-4		GTX85552			
Caspase-5	GTX85550	GTX85549			
Caspase-6	GTX85547	GTX85546			
Caspase-7			GTX85532		
Caspase-8	GTX85543	GTX85542		GTX85540	GTX85539
Caspase-9	GTX85538	GTX85537		GTX85535	GTX85534
Caspase-10	GTX85567	GTX85566			
Caspase-12		GTX85564		GTX85563	



caspDETECT Caspase Screening Kit (GTX85573):

Analysis of apoptosis in Jurkat cells that were treated with the apoptosis inducer camptothecin (GTX47937) for 4 hours. Results were analyzed by flow cytometry.

Caspase Inhibitors

Cat. No.	Product
GTX47940	Negative Control for FMK Caspase Inhibitors, Z-FA-FMK
GTX47939	Caspase-1/3/8/9/10/12 Inhibitor Plus, Q-VD-Oph
GTX47952	Caspase-1 Inhibitor, Z-YVAD(OMe)-FMK
GTX47951	Caspase-2 Inhibitor, Z-VD(OMe)VAD(OMe)-FMK
GTX47950	Caspase-3 Inhibitor, Z-D(OMe)E(OMe)VD(OMe)-FMK
GTX47949	Caspase-4 Inhibitor, Z-LE(OMe)VD(OMe)-FMK
GTX47948	Caspase-5 Inhibitor, Z-WE(OMe)HD(OMe)-FMK

Cat. No.	Product
GTX47947	Caspase-6 Inhibitor, Z-VE(OMe)ID(OMe)-FMK
GTX47946	Caspase-8 Inhibitor, Z-IE(OMe)TD(OMe)-FMK
GTX47945	Caspase-9 Inhibitor, Z-LE(OMe)HD(OMe)-FMK
GTX47944	Caspase-10 Inhibitor, Z-AE(OMe)VD(OMe)-FMK
GTX47943	Caspase-12 Inhibitor, Z-ATAD(OMe)-FMK
GTX47942	Caspase-13 Inhibitor, Z-LE(OMe)E(OMe)D(OMe)-FMK
GTX47941	Caspase-Family Inhibitor, Z-VAD(OMe)-FMK

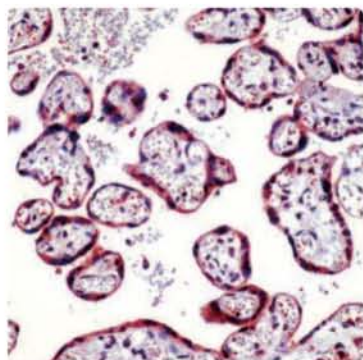
Caspases & Caspases Substrates

Caspases

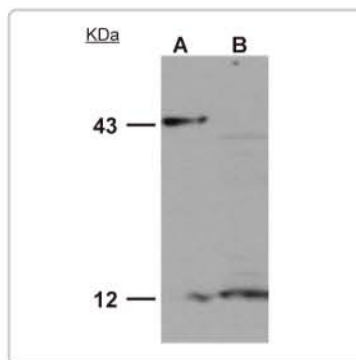
	Cat. No.	Product	Host & Clonality	Reactivity	Application
Casp-1	GTX111630	Caspase-1 antibody	Rb pAb	Hu	ICC/IF, IHC-P, WB
	GTX21872	Caspase 1 antibody	Rb pAb	Hu, Ms, Rat	IHC-Fr, IHC-P, WB
	GTX14367	Caspase-1 antibody [14F468]	Ms mAb	Hu, Pig, Rat	IHC-P, WB
	GTX86897	Caspase-1 (cleaved Asn120) antibody	Rb pAb	Hu	ELISA, WB
Casp-2	GTX110542	Caspase-2 antibody	Rb pAb	Hu	WB
	GTX82535	Caspase-2 antibody	Rb pAb	Hu	ELISA, FACS, IHC, WB
	GTX59706	Caspase-2 antibody	Rb pAb	Hu, Ms, Rat	WB
	GTX13870	Caspase-2 antibody [18E809]	Ms mAb	Hu, Ms, Rat	WB
	GTX86956	Caspase-2 (cleaved Gly170) antibody	Rb pAb	Hu	ELISA, WB
	GTX86954	Caspase-2 (cleaved Thr325) antibody	Rb pAb	Hu, Ms, Rat	ELISA, WB
	GTX110543	Caspase-3 antibody	Rb pAb	Hu, Ms	ICC/IF, IHC-P, WB
Casp-3	GTX73090	Caspase-3 antibody	Rb pAb	Hu, Ms, Rb, Rat	IHC-P, IP, WB
	GTX22171	Caspase-3 antibody [3CSP03]	Ms mAb	Hu	IHC-Fr, IHC-P, IP, WB
	GTX17868	Caspase-3 antibody [3F49]	Ms mAb	Hu	IHC-P, IP, WB
	GTX22302	Caspase-3 (active) antibody	Rb pAb	Hu, Ms, Rat	IHC-Fr, IHC-P, WB
	GTX86952	Caspase-3 (cleaved Asp175) antibody	Rb pAb	Hu, Ms, Rat	ELISA, IHC, WB
Casp-4	GTX100204	Caspase-4 antibody	Rb pAb	Hu	ICC/IF, IHC-P, WB
	GTX113639	Caspase-4 antibody	Rb pAb	Hu	IHC-P, WB
	GTX10447	Caspase 4 antibody	Rb pAb	Hu	IP, WB
	GTX86890	Caspase-4 (cleaved Gln81) antibody	Rb pAb	Hu	ELISA, WB
Casp-5	GTX59707	Caspase-5 antibody	Rb pAb	Hu, Ms, Hm, Mk, Rat, Bov	WB
	GTX10448	Caspase-5 antibody [CAS5]	Ms mAb	Hu	DID, ELISA, WB
	GTX86923	Caspase-5 (cleaved Asp121) antibody	Rb pAb	Hu	ELISA, WB
	GTX86899	Caspase-5 (cleaved Ser331) antibody	Rb pAb	Hu	ELISA, WB
Casp-6	GTX82539	Caspase-6 antibody	Rb pAb	Hu, Ms	ELISA, WB
	GTX59708	Caspase-6 antibody	Rb pAb	Hu, Ms, Rat	WB
	GTX22326	Caspase-6 (active) antibody	Rb pAb	Hu, Ms, Rat	WB
	GTX86896	Caspase-6 (cleaved Asp162) antibody	Rb pAb	Ms, Rat	ELISA, IHC, WB
Casp-7	GTX102337	Caspase-7 antibody	Rb pAb	Hu	WB
	GTX42546	Caspase-7 antibody	Rb pAb	Hu, Ms, Rat	IHC-P, WB
	GTX59548	Caspase-7 antibody [B4-G2]	Ms mAb	Hu, Ms, Rat	IP, WB
	GTX22323	Caspase-7 (active) antibody	Rb pAb	Hu, Ms, Rat	FACS, IHC-Fr, IP, WB
Casp-8	GTX86925	Caspase-7 (cleaved Asp198) antibody	Rb pAb	Hu, Ms	ELISA, IHC, WB
	GTX110723	Caspase-8 antibody	Rb pAb	Hu	WB
	GTX73092	Caspase-8 antibody	Rb pAb	Hu, Ms, Rat	IHC-P, IP, WB
	GTX23249	Caspase-8 antibody [8CSP03]	Ms mAb	Hu	IHC-P, IP, WB
Casp-9	GTX59607	Caspase-8 (active) antibody	Rb pAb	Ms, Rat	WB
	GTX86893	Caspase-8 (cleaved Asp384) antibody	Rb pAb	Hu	ELISA, WB
	GTX112888	Caspase-9 antibody	Rb pAb	Hu	WB
	GTX73093	Caspase-9 antibody	Rb pAb	Hu, Ms, Rat	IHC-P, IP, WB
	GTX16893	Caspase-9 antibody [1-2]	Ms mAb	Hu	WB
	GTX22324	Caspase-9 (active) antibody	Rb pAb	Hu	ICC/IF, IP, WB
Casp-10	GTX86945	Caspase-9 (cleaved Asp315) antibody	Rb pAb	Hu	ELISA, IHC, WB
	GTX86928	Caspase-9 (cleaved Asp330) antibody	Rb pAb	Hu	ELISA, IHC, WB
	GTX86912	Caspase-9 (cleaved Asp353) antibody	Rb pAb	Ms, Rat	ELISA, IHC, WB
	GTX113148	Caspase-10 antibody	Rb pAb	Hu	ICC/IF, IHC-P, WB
	GTX82537	Caspase-10 antibody	Rb pAb	Hu	ELISA, FACS, IHC, WB
	GTX59704	Caspase-10 antibody	Rb pAb	Hu, Ms, Rat	WB
	GTX10453	Caspase-10 antibody [25C2]	Rat mAb	Hu	WB

Caspases

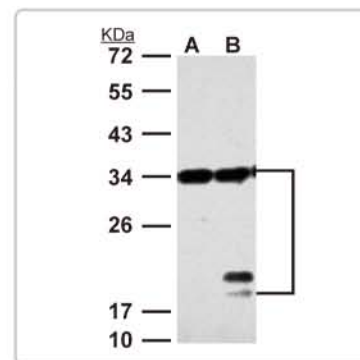
	Cat. No.	Product	Host & Clonality	Reactivity	Application
Casp-11	GTX59705	Caspase-11 antibody	Rb pAb	Ms, Rat	WB
	GTX10454	Caspase-11 antibody [17D9]	Rat mAb	Ms, Rat	IHC-Fr, IP, WB
Casp-12	GTX59923	Caspase-12 antibody	Rb pAb	Ms, Rat	WB
	GTX74429	Caspase-12 antibody	Rb pAb	Hu, Rat	WB
	GTX10455	Caspase-12 antibody [14F7]	Rat mAb	Hu, Ms, Rat	ICC/IF, WB
Casp-13	GTX22011	Caspase-13 antibody	Rb pAb	Hu, Ms, Rat	WB
Casp-14	GTX111888	Caspase-14 antibody	Rb pAb	Hu	ICC/IF, WB



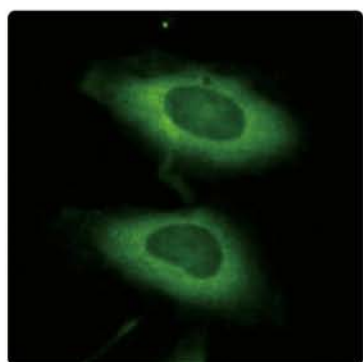
Caspase-1 antibody (GTX21872):
IHC analysis of human placenta.



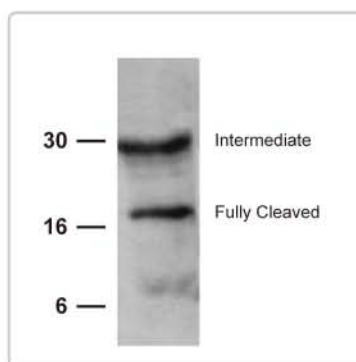
Caspase-2 antibody (GTX59706):
WB analysis of (A) control and (B) apoptotic cell lysates.



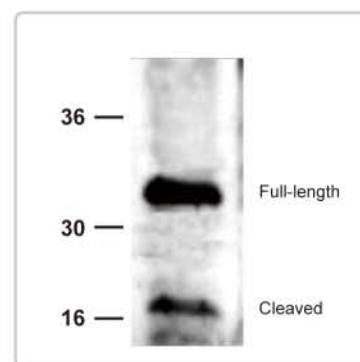
Caspase-3 antibody (GTX110543):
WB analysis of (A) untreated and (B) cisplatin-treated HeLa cells.



Caspase-4 antibody (GTX100204):
ICC/IF analysis of PFA-fixed HeLa cells.

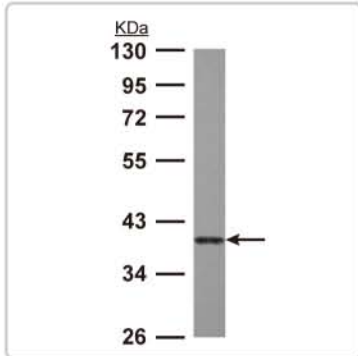


Caspase-5 antibody (GTX59707):
WB analysis of rat kidney tissue lysate.

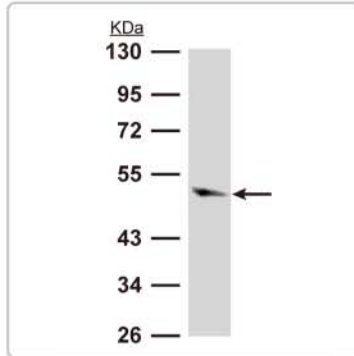


Caspase-6 antibody (GTX59708):
WB analysis of rat kidney lysate.

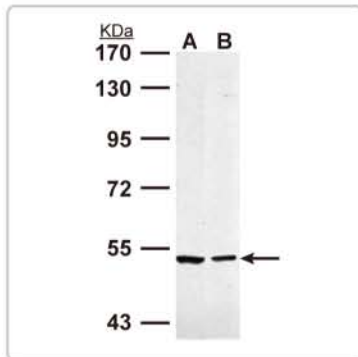
Caspases & Caspases Substrates



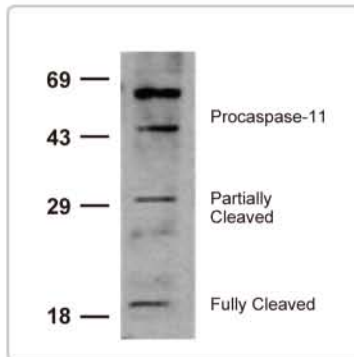
Caspase-7 antibody (GTX102337):
WB analysis of A431 whole cell lysate.



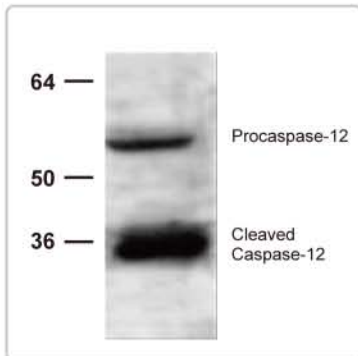
Caspase-9 antibody (GTX112888):
WB analysis of 293T whole cell lysate.



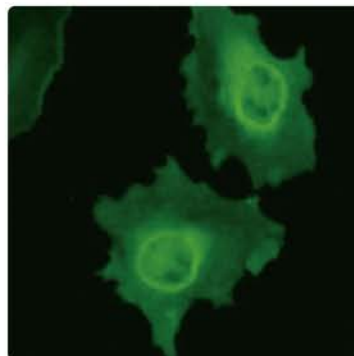
Caspase-10 antibody (GTX113148):
WB analysis of (A) Jurkat and (B) NCI-H929 cell lysates.



Caspase-11 antibody (GTX59705):
WB analysis of 3T3 cell lysate.



Caspase-12 antibody (GTX59923):
WB analysis of rat kidney tissue lysate.



Caspase-14 antibody (GTX111888):
ICC/IF analysis of PFA-fixed HeLa cells.



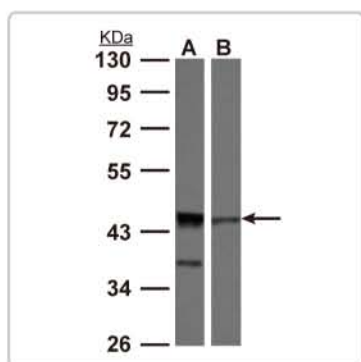
Recently
published
using GeneTex
products?

GeneTex is proud to support the work of the world's leading researchers. Please share your **publications** with the corresponding GeneTex catalog numbers and receive a gift.

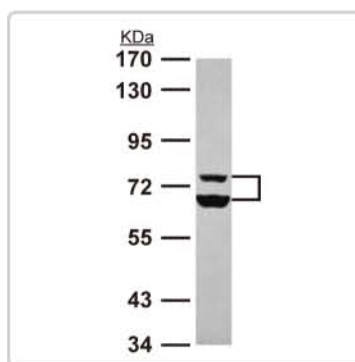


Caspase substrates

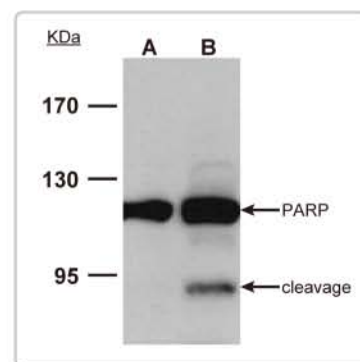
	Cat. No.	Product	Host & Clonality	Reactivity	Application
Acinus	GTX70370	Acinus antibody	Rb pAb	Hu	WB
	GTX27352	Acinus antibody	Rb pAb	Hu, Ms	WB
ICAD/ DFF45	GTX103668	ICAD antibody	Rb pAb	Hu	WB
	GTX113416	ICAD antibody	Rb pAb	Hu	WB
	GTX84622	DFF45 antibody [1B10]	Ms mAb	Hu	ICC/IF, WB
	GTX84620	DFF45 antibody [3F12]	Ms mAb	Hu	ICC/IF, WB
Lamin A/C	GTX86959	DFF45 (cleaved Asp224) antibody	Rb pAb	Hu	ELISA, IHC
	GTX101126	Lamin A/C antibody	Rb pAb	Hu, Ms	ICC/IF, IHC-P, WB
	GTX101127	Lamin A/C antibody	Rb pAb	Hu, Ms, Rat	ICC/IF, IHC-P, WB
	GTX80381	Lamin A antibody [133A2]	Ms mAb	Hu, Ms, Cow, Dog, Rat	FACS, ICC/IF, IHC-Fr, WB
	GTX24789	Lamin A/C antibody [JOL3]	Ms mAb	Hu, Ms, Rat	ICC/IF, WB
PARP-1	GTX86913	Lamin A (cleaved Asp230) antibody	Rb pAb	Hu, Ms, Rat	ELISA, IHC, WB
	GTX100573	PARP-1 antibody	Rb pAb	Hu	ICC/IF, WB
	GTX112864	PARP-1 antibody	Rb pAb	Hu	ICC/IF, IHC-P, WB
	GTX26079	PARP-1 antibody	Rb pAb	Hu, Ms, Rat	IHC-P, IP, WB
	GTX628836	PARP-1 antibody [GT6212]	Ms mAb	Hu	WB
ROCK-1	GTX75098	PARP antibody [A6.4.12]	Ms mAb	Hu, Ms, Hm, Rat	ELISA, ICC/IF, IHC-Fr, IHC-P, IP, WB
	GTX113266	ROCK-1 antibody	Rb pAb	Hu	ICC/IF, IHC-P, WB
	GTX125921	ROCK-1 antibody	Rb pAb	Hu	WB
	GTX59604	ROCK-1 (cleaved) antibody [12M03]	Ms mAb	Hu, Ms	WB



ICAD antibody (GTX103668):
WB analysis of (A) 293T and (B) Jurkat cell lysates.



Lamin A/C antibody (GTX101127):
WB analysis of A431 whole cell lysate.



PARP1 antibody (GTX112864):
WB analysis of (A) untreated and (B) cisplatin-treated HCT116 cell lysates.

DNA Fragmentation

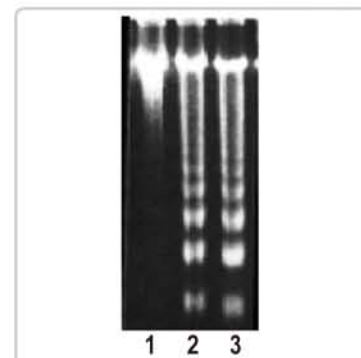
DNA fragmentation is one of the terminal events in the apoptotic pathway. GeneTex offers several solutions for the detection of fragmented DNA in apoptotic cells. The DNA ladder detection kits allow for the direct visualization of fragmented DNA on an agarose gel. Alternatively, the TUNEL kits utilize the Terminal deoxynucleotidyl transferase dUTP nick end labeling (TUNEL) technique to allow for highly sensitive visualization of nicked DNA.

DNA Ladder Detection Kits

Cat. No.	Product	Features
GTX85527	Easy Apoptotic DNA Ladder Detection Kit	<ul style="list-style-type: none"> • Takes only 90 minutes. • Improves sensitivity by increasing recovery of small DNA fragments.
GTX85530	Enhanced Apoptotic DNA Ladder Detection Kit	<ul style="list-style-type: none"> • Takes only 90 minutes. • Available for both tissues and cells. • Higher sensitivity.
GTX85580	Apoptotic DNA Ladder Isolation Kit	<ul style="list-style-type: none"> • Takes only 2-4 hours. • Available for both tissues and cells. • Extract fragmented DNA from an apoptotic cell population as low as 5%.

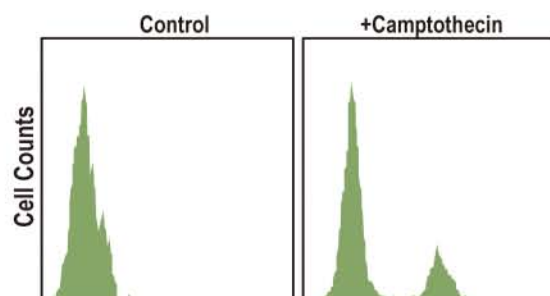
TUNEL Assay Kits

Cat. No.	Product	Features
GTX85582	easyTUNEL DNA Fragmentation Assay Kit	<ul style="list-style-type: none"> • Takes less than 1 hour. • Detection: FITC-dUTP (Ex/Em = 488/520 nm).
GTX85583	proTUNEL-IHC DNA Fragmentation Assay Kit	<ul style="list-style-type: none"> • Detection: Br-dUTP + anti-BrdU-Biotin Ab + Streptavidin-HRP + DAB.
GTX85584	proTUNEL-Red DNA Fragmentation Assay Kit	<ul style="list-style-type: none"> • Takes ~ 3 hours. • Detection: Br-dUTP + anti-BrdU-Red Ab (Ex/Em = 488/576 nm).
GTX85585	proTUNEL DNA Fragmentation Assay Kit	<ul style="list-style-type: none"> • Takes ~ 1 hour. • Greater sensitivity. • Detection: Br-dUTP + anti-BrdU-FITC Ab (Ex/Em = 488/520 nm).



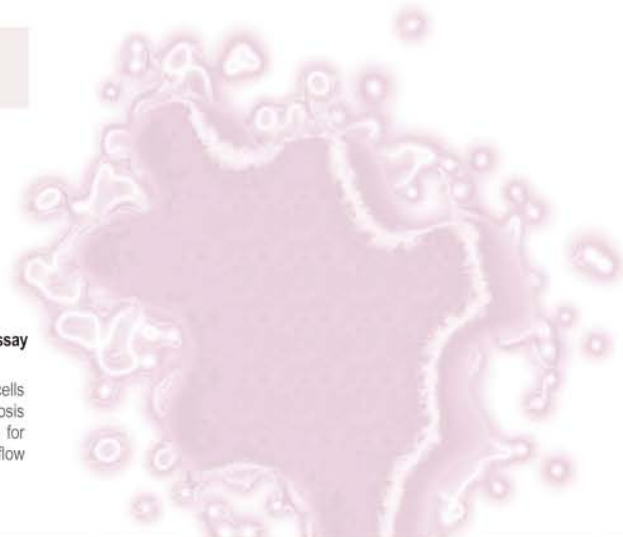
Easy Apoptotic DNA Ladder Detection Kit (GTX85527):

Apoptotic DNA ladder detection in Jurkat cells that were treated with the apoptosis inducer camptothecin (GTX47937) for 0 hr (lane 1), 6 hrs (lane 2), and 12 hrs (lane 3).



proTUNEL DNA Fragmentation Assay Kit (GTX85585):

Detection of apoptosis in Jurkat cells that were treated with the apoptosis inducer camptothecin (GTX47937) for 8 hours. Results were analyzed by flow cytometry.

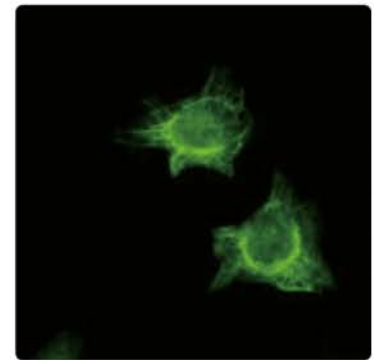


Metabolic Activity

Apoptosis is associated with alterations to cellular metabolism. In apoptotic cells, mitochondrial metabolic activity is diminished, leading to a decrease in the concentration of cellular ATP and a corresponding increase in the concentration of ADP. These changes can be measured using GeneTex's ADP and ATP quantification kits to monitor cellular health and apoptotic progression. GeneTex's Easy Cell Proliferation kit directly measures mitochondrial activity in living cells, providing a one-step high sensitivity assay for metabolic activity.

Assay Kits

Cat. No.	Product	Features
GTX85579	ATP Colorimetric / Fluorometric Assay Kit	* Takes less than 1 hour.
GTX85594	ADP Colorimetric / Fluorometric Assay Kit	* Takes less than 1 hour. * Sensitive, stable and high-throughput adaptable.



XIAP antibody (GTX113130):
ICC/IF analysis of methanol-fixed HeLa cells.

Cytosolic Apoptosis Inhibitors

	Cat. No.	Product	Host & Clonality	Reactivity	Application
Apollon	GTX19609	Apollon antibody	Rb pAb	Hu, Ms	IP, WB
	GTX89765	Apollon antibody	Gt pAb	Hu, Ms	ELISA
cIAP	GTX110087	cIAP1 antibody	Rb pAb	Hu, Ms, Rat	WB
	GTX59714	cIAP1 antibody	Rb pAb	Ms, Rat	WB
	GTX113128	cIAP2 antibody	Rb pAb	Hu	IHC-P, WB
	GTX59649	cIAP2 antibody	Rb pAb	Hu, Ms, Rat	WB
FLIP	GTX104725	FLIP antibody	Rb pAb	Hu	WB
	GTX113047	FLIP antibody	Rb pAb	Hu	IHC-P, WB
	GTX85524	FLIP antibody	Rb pAb	Ms	ELISA, ICC/IF, WB
ILP-2	GTX29664	ILP-2 antibody	Rb pAb	Hu, Ms, Rat	WB
	GTX59774	ILP-2 antibody	Rb pAb	Hu, Ms, Rat	ELISA, WB
Livin	GTX114132	Livin antibody	Rb pAb	Hu	ICC/IF, IHC-P, WB
	GTX37633	Livin antibody	Rb pAb	Hu, Ms, Cow, Dog, Rat	ELISA, WB
	GTX84822	Livin antibody [1B10]	Ms mAb	Hu	FACS, ICC/IF, WB
	GTX89665	Livin antibody	Gt pAb	Hu	ELISA, WB
NAIP	GTX22549	NAIP antibody	Rb pAb	Hu	WB
	GTX39572	NAIP antibody	Rb pAb	Hu	IHC-P, WB
Survivin	GTX100052	Survivin antibody	Rb pAb	Hu	ICC/IF, IHC-P, WB
	GTX100441	Survivin antibody	Rb pAb	Hu, Ms	ICC/IF, IHC-P, WB
	GTX10584	Survivin antibody [32.1]	Ms mAb	Hu	ICC/IF, IP, WB
XIAP	GTX113130	XIAP antibody	Rb pAb	Hu	ICC/IF, IHC-P, WB
	GTX100496	XIAP antibody	Rb pAb	Hu, Ms	ICC/IF, IHC-P, WB
	GTX59661	XIAP antibody	Rb pAb	Hu, Ms	WB

Custom Antibody Services

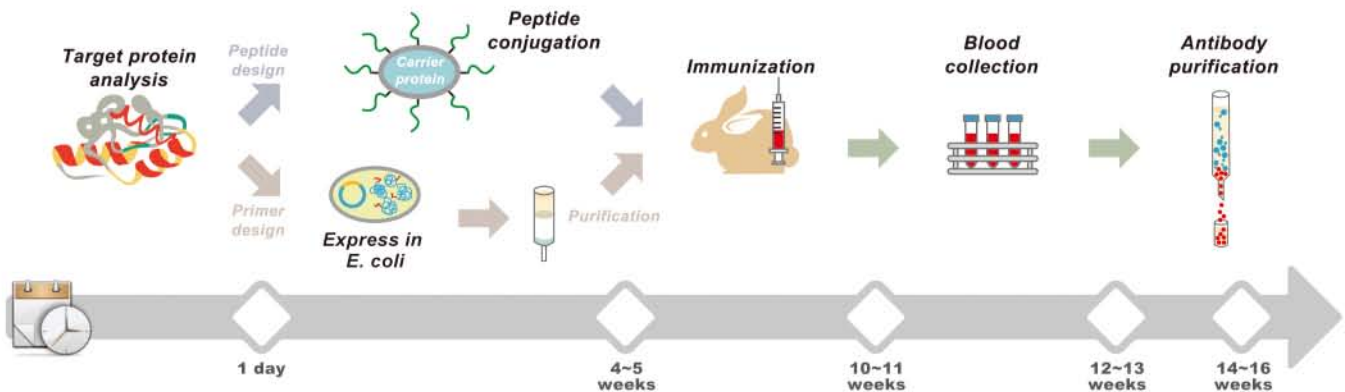
Your Idea, Our Laboratory

Let GeneTex become your personal **custom** antibody production facility. GeneTex has produced **over 20,000** polyclonal antibodies. Use our experience and expertise to help advance your research.

Featured characteristics

- Proprietary bioinformatics database identifies the ideal target epitope and optimizes synthesis, solubility and antigenicity
- Efficient production of high quality antigens using prokaryotic expression or peptide conjugation
- Enhanced cocktail immunization technique produces high-titer antiserum
- Highly specific antigen affinity purification
- Online tracking system

Flow Chart



Please contact us for details, pricing and if you have any questions about our custom antibody service.
 Email: custom_service@genetex.com



International

Tel : 886.3.6208988
Fax : 886.3.6209098
E-mail : info@genetex.com

USA

Tel : 1.949.553.1900
Fax : 1.949.309.2888
Toll-free : 1.877.GeneTex (1.877.436.3839)
E-mail : info@genetex.com



www.genetex.com