



# Epigenetics Histone Modification

**M** **Methylation**  
Methyltransferases  
Demethylases

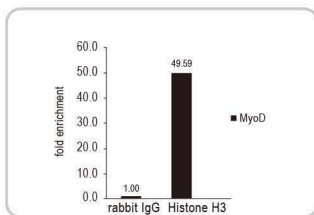
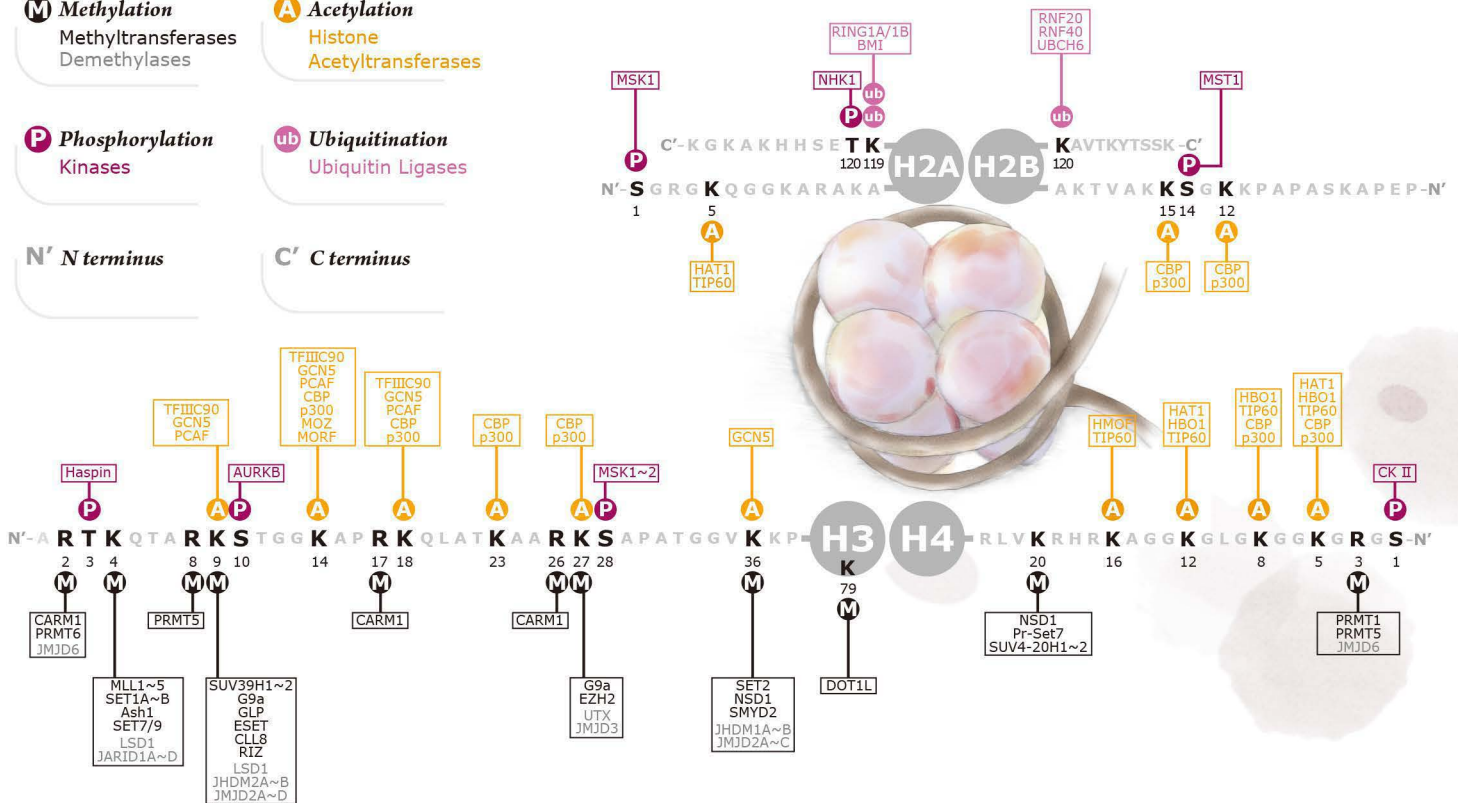
**A** **Acetylation**  
Histone  
Acetyltransferases

**P** **Phosphorylation**  
Kinases

**ub** **Ubiquitination**  
Ubiquitin Ligases

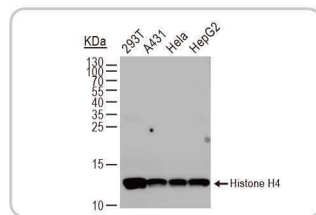
**N'** **N terminus**

**C'** **C terminus**



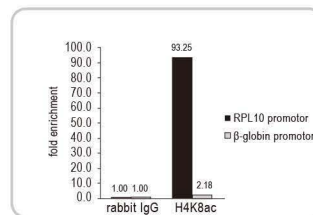
**Histone H3 antibody (GTX122148)**

ChIP analysis with Histone H3 antibody on chromatin extract of HeLa cells.



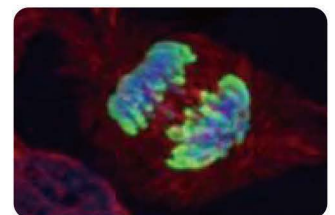
**Histone H4 antibody (GTX129561)**

WB analysis with Histone H4 antibody.



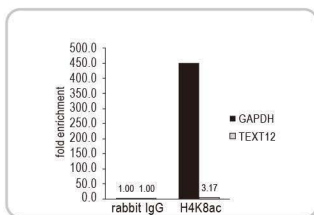
**Histone H3K27ac (acetyl Lys27) Antibody (GTX128944)**

ChIP analysis with Histone H3K27ac antibody on chromatin extract of HeLa cells treated with Trichostatin A.



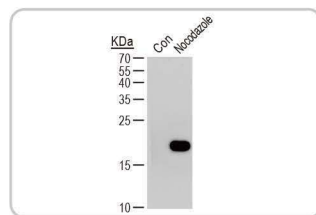
**Histone H3S10ph (pSer10) antibody (GTX128116)**

ICC/IF analysis with Histone H3S10ph antibody on U2OS cells.



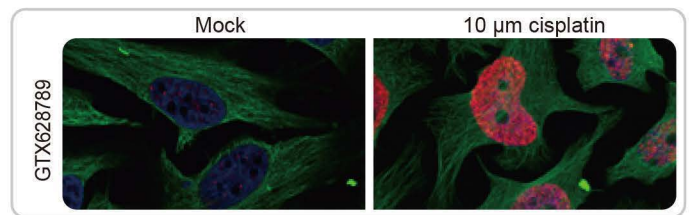
**Histone H4K8ac (acetyl Lys8) Antibody (GTX128957)**

ChIP analysis with Histone H4K8ac antibody on HeLa chromatin extract treated with Trichostatin A.



**Histone H3S10ph (phospho Ser10) Antibody [GT921] (GTX630185)**

WB analysis with Histone H3S10ph antibody.



**Histone H2A.XS139ph (phospho Ser139) antibody [GT2311] (GTX628789)**

ICC/IF analysis with Histone H2A.XS139ph antibody on HeLa cells treated w/o cisplatin.

## Histone H1 antibodies

**C** Citation

	Cat. No.	Product	Reactivity	Host & Clonality	Application
Unmodified	GTX114462	Histone H1.0 antibody	Hu, Ms, Rat	Rb pAb	ICC/IF, IHC-P, WB
	GTX117055	Histone H1.1 antibody	Hu	Rb pAb	WB
	GTX122561	Histone H1.2 antibody	Hu	Rb pAb	ICC/IF, IHC-P, WB
	GTX104481	Histone H1.3 antibody	Hu, Ms	Rb pAb	ICC/IF, IHC-P
	GTX121670	Histone H1.4 antibody [N1N2], N-term	Hu	Rb pAb	IHC-P, WB
	GTX117438	Testis-specific H1 histone antibody	Hu	Rb pAb	WB
	<b>C</b> GTX117336	Histone H1t antibody [N1C3]	Hu	Rb pAb	WB
	<b>C</b> GTX21938	Histone H1 antibody	Ms, Mamm	Shp pAb	ICC/IF, IHC, IP, WB
Acetylation	<b>C</b> GTX88006	Histone H1K25ac (acetyl Lys25) antibody	Hu	Rb pAb	ELISA, IHC, IHC-P, WB
Phosphorylation	<b>C</b> GTX121669	Histone H1S35ph (phospho Ser35) antibody	Hu	Rb pAb	ICC/IF, IHC-P, WB

## Histone H2A antibodies

**C** Citation

	Cat. No.	Product	Reactivity	Host & Clonality	Application
Unmodified	GTX129418	Histone H2A antibody	Hu, Ms, Rat	Rb pAb	IHC-P, WB
	GTX102073	Histone H2A.V antibody	Hu, Ms	Rb pAb	ICC/IF, WB
	<b>C</b> GTX108272	Histone H2A.X antibody	Hu	Rb pAb	ICC/IF, IHC-P, IP, WB
	GTX108297	Histone H2A.X antibody [N1N2], N-term	Hu	Rb pAb	IHC-P, WB
	GTX62983	Histone H2A.X antibody [EPR895]	Hu, Ms, Rat	Rb mAb	ICC/IF, IHC-M, IHC-P, WB
	GTX108273	Histone H2A.Z antibody	Hu, Ms	Rb pAb	ICC/IF, IHC-P, IP, WB, ChIP assay
	GTX60812	Histone H2A.Z antibody - ChIP grade	Hu	Rb pAb	ELISA, ICC/IF, WB, ChIP assay, ChIP-seq
Acetylation	GTX128961	Histone H2AK5ac (acetyl Lys5) antibody	Hu	Rb pAb	Dot, ICC/IF, IP, WB
	GTX61409	Histone H2AK5ac (acetyl Lys5) antibody [EP856Y], N-term	Hu, Ms, Rat	Rb mAb	ICC/IF, IHC-M, IHC-P, IP, WB
	GTX60813	Histone H2A.Z (acetyl Lys5/Lys7/Lys11) antibody - ChIP grade	Hu, Ms	Rb pAb	Dot, ELISA, ICC/IF, WB, ChIP assay, ChIP-seq
Phosphorylation	GTX127340	Histone H2A.XS139ph (phospho Ser139) antibody	Hu, Ms	Rb pAb	ICC/IF, WB
	<b>C</b> GTX628789	Histone H2A.XS139ph (phospho Ser139) antibody [GT2311]	Hu, Ms	Ms mAb	ICC/IF, IP, WB
	<b>C</b> GTX61796	Histone H2A.XS139ph (phospho Ser139) antibody [EP854(2)Y]	Hu, Ms, Rat	Rb mAb	ICC/IF, IHC-M, IHC-P, WB
	GTX48733	Histone H2A.VS137ph (phospho Ser137) antibody	Dm	Rb pAb	ELISA, WB

## Histone H2B antibodies

**C** Citation

	Cat. No.	Product	Reactivity	Host & Clonality	Application
Unmodified	GTX115955	Histone H2B antibody	Hu	Rb pAb	ICC/IF, IHC-P, WB
	GTX129434	Histone H2B antibody	Hu, Ms	Rb pAb	WB
	GTX87385	Histone H2B antibody	Hu, Ms	Rb pAb	ELISA, ICC/IF, IHC, IHC-P, WB
	GTX61374	Histone H2B antibody	Hu, Ms, Rat	Rb pAb	ICC/IF, IHC-P, IP, WB
	GTX21790	Histone H2B antibody	Hu, Rat, At, Mamm	Rb pAb	ICC/IF, WB, ChIP assay
	GTX61455	Histone H2B antibody [EP957Y]	Hu, Ms, Rat	Rb mAb	ICC/IF, IHC-M, IHC-P, IP, WB
	GTX61979	Histone H2B Type 1B antibody [EP2327], N-term	Hu	Rb mAb	ICC/IF, IHC-P, WB
	GTX26689	Histone H2B antibody	Mamm	Rb pAb	ELISA, ICC/IF, IP, WB
Acetylation	GTX59545	Histone H2B (acetyl) antibody	Hu, Ms, Rat	Rb pAb	IHC, IP, WB
	GTX128963	Histone H2BK5ac (acetyl Lys5) antibody	Hu	Rb pAb	Dot, ICC/IF, WB
	GTX61377	Histone H2BK12ac (acetyl Lys12) antibody [EP858Y]	Hu	Rb mAb	ICC/IF, IHC-P, WB
	GTX61756	Histone H2BK15ac (acetyl Lys15) antibody [EP955Y]	Hu, Ms, Rat	Rb mAb	ICC/IF, IHC-M, IHC-P, WB
	GTX128962	Histone H2BK20ac (acetyl Lys20) antibody	Hu	Rb pAb	Dot, ICC/IF, IP, WB
	GTX61427	Histone H2BK20ac (acetyl Lys20) antibody [EP859Y]	Hu, Ms, Rat	Rb mAb	FACS, ICC/IF, IHC-M, IHC-P, IP, WB








## Histone H3 antibodies

**C** Citation

	Cat. No.	Product	Reactivity	Host & Clonality	Application	
Unmodified	<b>C</b> GTX122148	Histone H3 antibody	Hu, Mk, Rice	Rb pAb	ICC/IF, IHC-P, IP, WB, ChIP assay	
	GTX129546	Histone H3 antibody	Ms, Rat	Rb pAb	IHC-P	
	GTX27834	Histone H3 antibody	Hu, Bov	Shp pAb	IHC-P, IP, WB	
	GTX37670	Histone H3 antibody	Hu, Ms, Rat	Rb pAb	ELISA, ICC/IF, IHC-P, WB	
	GTX27031	Histone H3 antibody [H3-P]	Hu	Ms mAb	Dot, FACS, I-ELISA, ICC/IF, WB	
	<b>C</b> GTX10543	Histone H3 antibody [HTA28]	Hu, Ms, Cow, Hm	Rat mAb	FACS, ICC/IF, WB	
	GTX122647	Histone H3.1 antibody	Hu	Rb pAb	WB	
	GTX127985	Histone H3.1 antibody	Hu	Rb pAb	IHC-P, WB	
	GTX110653	Histone H3.1t antibody [N1C3]	0	Rb pAb	WB-Ag	
	GTX80943	Histone H3.1t antibody, N-term	Hu	Rb pAb	ELISA, WB	
	GTX101754	Histone H3.3 antibody	Hu, Ms	Rb pAb	ICC/IF, WB	
	<b>C</b> GTX112955	Histone H3.3 antibody	Hu, Ms, Rat, Rice	Rb pAb	IHC-P, WB	
	<b>C</b> GTX115549	Histone H3.3B antibody	Hu, Ms, Rat	Rb pAb	ICC/IF, IHC-P, WB	
	Methylation	GTX60350	Histone H3K27me1 (monomethyl Lys27) antibody - ChIP grade	Hu	Rb pAb	Dot, ELISA, ICC/IF, WB, ChIP assay
		<b>C</b> GTX121184	Histone H3K27me3 (trimethyl Lys27) antibody	Hu	Rb pAb	ICC/IF, IHC-P, WB
<b>C</b> GTX50901		Histone H3K27me3 (trimethyl Lys27) antibody [MABI0323]	Hu	Ms mAb	ELISA, ICC/IF, WB, ChIP assay	
GTX60354		Histone H3K36me1 (monomethyl Lys36) antibody - ChIP grade	Hu	Rb pAb	Dot, ELISA, ICC/IF, WB, ChIP assay	
GTX60372		Histone H3K36me2 (dimethyl Lys36) antibody - ChIP grade	Hu	Rb pAb	Dot, ELISA, ICC/IF, WB, ChIP assay, ChIP-seq	
GTX60817		Histone H3K36me3 (trimethyl Lys36) antibody - ChIP grade	Hu, Ms	Rb pAb	Dot, ELISA, ICC/IF, WB, ChIP assay, ChIP-seq	
<b>C</b> GTX50908		Histone H3K36me3 (trimethyl Lys36) antibody [MABI0333]	Hu	Ms mAb	ELISA, ICC/IF, WB, ChIP assay	
GTX60818		Histone H3K4me1 (monomethyl Lys4) antibody - ChIP grade	Hu, Ms	Rb pAb	Dot, ELISA, ICC/IF, WB, ChIP assay, ChIP-seq	
<b>C</b> GTX50902		Histone H3K4me1 (monomethyl Lys4) antibody [MABI0302]	Hu	Ms mAb	ELISA, ICC/IF, WB, ChIP assay	
<b>C</b> GTX121915		Histone H3K4me2 (dimethyl Lys4) antibody	Hu	Rb pAb	ICC/IF, IHC-P, IP, WB, ChIP assay	
GTX61105		Histone H3K4me2 (dimethyl Lys4) antibody [Y47]	Hu, Ms, Rat	Rb mAb	ICC/IF, IHC-P, WB	
GTX128954		Histone H3K4me3 (trimethyl Lys4) antibody	Hu, Ms, Rat	Rb pAb	Dot, ICC/IF, IHC-P, WB	
<b>C</b> GTX50897		Histone H3K4me3 (trimethyl Lys4) antibody [MABI0304]	Hu	Ms mAb	ELISA, ICC/IF, WB, ChIP assay	

## Histone H3 antibodies

 Citation

	Cat. No.	Product	Reactivity	Host & Clonality	Application
<b>Methylation</b>	GTX60330	Histone H3K79me2 (dimethyl Lys79) antibody	Hu	Rb pAb	Dot, ELISA, ICC/IF, WB, ChIP assay, ChIP-seq
	GTX12177	Histone H3K9me1 (monomethyl Lys9) antibody	Hu, Ms, Cow, Rat, XI	Rb pAb	IHC-P, WB
	GTX129770	Histone H3K9me1 (monomethyl Lys9) antibody	Hu	Rb pAb	ICC/IF
	 GTX50899	Histone H3K9me2 (dimethyl Lys9) antibody [MABI0307]	Hu	Ms mAb	ELISA, ICC/IF, WB, ChIP assay
	GTX61106	Histone H3K9me2 (dimethyl Lys9) antibody [Y49]	Hu, Ms, Rat	Rb mAb	ICC/IF, WB
	GTX121677	Histone H3K9me3 (trimethyl Lys9) antibody	Hu	Rb pAb	WB
	GTX60824	Histone H3K9me3 (trimethyl Lys9) antibody - ChIP grade	Hu, Ms	Rb pAb	Dot, ELISA, ICC/IF, WB, ChIP assay, ChIP-seq
	 GTX50900	Histone H3K9me3 (trimethyl Lys9) antibody [MABI0308]	Hu	Ms mAb	ELISA, ICC/IF, WB, ChIP assay
	GTX124113	Histone H3R17me2 (dimethyl Arg17) antibody	Hu	Rb pAb	Dot, IHC-P, WB
	GTX60344	Histone H3R17me2 (dimethyl Arg17) antibody - ChIP grade	Hu	Rb pAb	Dot, ELISA, WB, ChIP assay
<b>Acetylation</b>	GTX60825	Histone H3R17me2K18ac (dimethyl Arg17, acetyl Lys18) antibody - ChIP grade	Hu, Ms	Rb pAb	Dot, ELISA, ICC/IF, WB, ChIP assay, ChIP-seq
	GTX124114	Histone H3R2me2 (dimethyl Arg2) antibody	Hu	Rb pAb	Dot, WB
	GTX60355	Histone H3K4ac (acetyl Lys4) antibody - ChIP grade	Hu	Rb pAb	Dot, ELISA, ICC/IF, WB, ChIP assay
	GTX61520	Histone H3K14ac (acetyl Lys14) antibody [EP964Y]	Hu, Rat	Rb mAb	ICC/IF, IHC-P, IP, WB
	GTX128943	Histone H3K18ac (acetyl Lys18) antibody	Hu, Ms, Rat	Rb pAb	Dot, ICC/IF, IHC-P, IP, WB, ChIP assay
	GTX61387	Histone H3K18ac (acetyl Lys18) antibody [EP959Y]	Hu, Ms, Rat	Rb mAb	ICC/IF, IHC-M, IHC-P, WB
	GTX128944	Histone H3K27ac (acetyl Lys27) antibody	Hu, Ms, Rat	Rb pAb	Dot, ICC/IF, IHC-P, IP, WB, ChIP assay
	GTX60815	Histone H3K27ac (acetyl Lys27) antibody - ChIP grade	Hu, Ms	Rb pAb	Dot, ELISA, ICC/IF, WB, ChIP assay, ChIP-seq
	 GTX50903	Histone H3K27ac (acetyl Lys27) antibody [MABI0309]	Hu	Ms mAb	ELISA, ICC/IF, WB, ChIP assay
	GTX61722	Histone H3K56ac (acetyl Lys56) antibody [EPR996Y]	Hu, Ms, Rat	Rb mAb	ICC/IF, IHC-M, IHC-P, WB
	 GTX12178	Histone H3K9ac (acetyl Lys9) antibody	Hu, Ms, Cow, Rat, XI	Rb pAb	ICC/IF, IHC-P, WB
	 GTX12179	Histone H3K9ac (acetyl Lys9) antibody [AH3-120]	Hu, Ms, Dm, Rat	Ms mAb	ELISA, ICC/IF, IHC, WB
	GTX630554	Histone H3K9ac (acetyl Lys9) antibody [GT464]	Hu	Ms mAb	ICC/IF, WB
	 GTX50898	Histone H3K9ac (acetyl Lys9) antibody [MABI0305]	Hu	Ms mAb	ICC/IF, IP, WB, ChIP assay
	 GTX61103	Histone H3K9ac (acetyl Lys9) antibody [Y28]	Hu, Ms, Rat	Rb mAb	ICC/IF, IHC-M, IHC-P, IP, WB
	GTX122648	Histone H3K9K14ac (acetyl Lys9/Lys14) antibody	Hu, Ms	Rb pAb	Dot, ICC/IF, WB
	GTX60822	Histone H3K9K14ac (acetyl Lys9/Lys14) antibody - ChIP grade	Hu, Ms	Rb pAb	Dot, ELISA, ICC/IF, WB, ChIP assay, ChIP-seq
	GTX61388	Histone H3TK27ac (acetyl Lys27) antibody [EP865Y]	Hu, Ms, Rat	Rb mAb	ICC/IF, IHC-M, IHC-P, WB
	<b>Phosphorylation</b>	GTX630185	Histone H3S10ph (phospho Ser10) Antibody [GT921]	Hu	Ms mAb
GTX62224		Histone H3.3S31ph (phospho Ser31) antibody [EPR1873]	Hu, Ms, Rat	Rb mAb	ICC/IF, IHC-M, IHC-P, WB
GTX12182		Histone H3S10ph (phospho Ser10) antibody	Hu, Ms, Cow, Rat, XI	Rb pAb	ICC/IF, WB
GTX128116		Histone H3S10ph (phospho Ser10) antibody	Hu, Ms, Rat	Rb pAb	ICC/IF, IHC-P, IP, WB, ChIP assay
GTX61067		Histone H3S10ph (phospho Ser10) antibody [E173]	Hu, Ms, Rat	Rb mAb	ICC/IF, IHC-M, IHC-P, IP, WB
GTX128953		Histone H3S28ph (phospho Ser28) antibody	Hu	Rb pAb	Dot, ICC/IF, IHC-P, WB
GTX63813		Histone H3T11ph (phospho Thr11) antibody [EPR5930]	Hu, Rat	Rb mAb	WB
GTX61749		Histone H3T3ph (phospho Thr3) antibody [EP1702Y]	Hu	Rb mAb	ICC/IF, IHC-P, WB
<b>Phosphorylation Methylation</b>	GTX60329	Histone H3K27me3S28ph (trimethyl Lys27, phospho Ser28) antibody - ChIP grade	Hu	Rb pAb	Dot, ELISA, ICC/IF, IP, WB, ChIP assay
	GTX60327	Histone H3K9me3S10ph (trimethyl Lys9, phospho Ser10) antibody - ChIP grade	Hu	Rb pAb	Dot, ELISA, ICC/IF, WB, ChIP assay
<b>Phosphorylation Acetylation</b>	GTX12181	Histone H3K9acS10ph (phospho Ser10, acetyl Lys9) antibody	Hu, Ms, Cow, Rat, XI	Rb pAb	ICC/IF, IHC-P, WB
	GTX12180	Histone H3K9acS10ph (phospho Ser10, acetyl Lys9) antibody [APH3-64]	Hu, Ms, Dm, Rat	Ms mAb	ELISA, IP, WB



## Histone H4 antibodies

 Citation

	Cat. No.	Product	Reactivity	Host & Clonality	Application
<b>Unmodified</b>	GTX129561	Histone H4 antibody	Ms, Rat	Rb pAb	IHC-P, WB
	GTX129560	Histone H4 antibody	Ms, Rat	Rb pAb	IHC-P, ICC/IF
	GTX52365	Histone H4 antibody	Hu, Ms, Rat	Rb pAb	ICC/IF, IHC, WB
<b>Methylation</b>	GTX128959	Histone H4K20me1 (monomethyl Lys20) antibody	Hu	Rb pAb	Dot, ICC/IF, WB
	GTX60331	Histone H4K20me1 (monomethyl Lys20) antibody [GT9008]	Hu	Ms mAb	Dot, ICC/IF, WB, ChIP assay, ChIP-seq
	GTX48878	Histone H4K20me2 (dimethyl Lys20) antibody [2B8]	Hu	Rat	IP, WB
	GTX630545	Histone H4K20me2 (dimethyl Lys20) antibody [GT1851]	Hu	Ms mAb	ICC/IF, WB, ChIP assay
	GTX630544	Histone H4K20me2 (dimethyl Lys20) antibody [GT282]	Hu	Ms mAb	ICC/IF, WB, ChIP assay
	GTX128960	Histone H4K20me3 (trimethyl Lys20) antibody	Hu, Ms, Rat	Rb pAb	Dot, ICC/IF, IHC-P, WB
	GTX60335	Histone H4K5ac (acetyl Lys5) antibody - ChIP grade	Hu, Ms	Rb pAb	Dot, ELISA, WB, ChIP assay, ChIP-seq
	GTX128957	Histone H4K8ac (acetyl Lys8) antibody	Hu, Ms, Rat	Rb pAb	Dot, ICC/IF, IHC-P, IP, WB, ChIP assay
	GTX61411	Histone H4K8ac (acetyl Lys8) antibody [EP1002Y], N-term	Hu, Ms, Rat	Rb mAb	ICC/IF, IHC-M, IHC-P, IP, WB
	GTX88003	Histone H4K12ac (acetyl Lys12) antibody	Hu, Ms, Rat	Rb pAb	ELISA, ICC/IF, IHC, IHC-P, WB
	GTX63069	Histone H4K16ac (acetyl Lys16) antibody [EPR1004]	Hu, Ms, Rat	Rb mAb	ICC/IF, IHC-M, IHC-P, WB
GTX122653	Histone H4K5K8K12K16ac (acetyl Lys5/Lys8/Lys12/Lys16) antibody	Hu, Ms, Rat	Rb pAb	Dot, ICC/IF, IHC-P, WB	












## Histone Modifying Enzymes

 Citation

	Cat. No.	Product	Reactivity	Host & Clonality	Application
<b>HAT1</b>	GTX110643	HAT1 antibody	Hu	Rb pAb	ICC/IF, IHC-P, IP, WB
	GTX12163	HAT1 antibody	Hu, Ms	Rb pAb	WB
<b>MYST</b>	GTX129380	MYST1 antibody	Hu	Rb pAb	WB
	GTX83065	MYST1 antibody [8C4C4]	Hu	Ms mAb	ELISA, ICC/IF, IHC, IHC-P, WB
	GTX102041	MYST2 antibody [N2C1], Internal	Hu, Ms	Rb pAb	IHC-P, WB
<b>TIP60</b>	GTX112197	TIP60 antibody	Hu, Ms	Rb pAb	ICC/IF, WB
	GTX112198	TIP60 antibody	Hu	Rb pAb	IHC-P, WB
<b>PCAF</b>	 GTX109666	PCAF antibody [C3], C-term	Hu, Ms	Rb pAb	WB
<b>SRC1</b>	GTX112567	SRC1 antibody	Hu	Rb pAb	WB
	 GTX70250	SRC1 antibody [1135]	Hu, Ms, Mk, Rat	Ms mAb	IP, WB, ChIP assay
<b>SRC2</b>	GTX112307	NCOA2 antibody [C2C3], C-term	Hu	Rb pAb	ICC/IF, WB
	GTX10491	NCOA2 antibody	Hu, Ms, XI	Rb pAb	IP, WB

# Histone Modifying Enzymes

 Citation

	Cat. No.	Product	Reactivity	Host & Clonality	Application
<b>SRC3</b>	GTX113869	NCOA3 antibody [N1N2], N-term	Hu	Rb pAb	ICC/IF, IHC-P, WB
<b>HDAC1</b>	 GTX100513	HDAC1 antibody	Hu, Ms	Rb pAb	ICC/IF, IHC-P, IP, WB, ChIP assay
	GTX62894	HDAC1 antibody [EPR460(2)], C-term	Hu, Ms, Rat	Rb mAb	ICC/IF, IHC-M, IHC-P, WB
	GTX27028	HDAC1 antibody	Hu, Ms, Rat	Rb pAb	Dot, IHC-P, IP, WB, ChIP assay
<b>HDAC2</b>	GTX109642	HDAC2 antibody	Hu, Ms, Rat	Rb pAb	ICC/IF, IHC-P, IP, WB, ChIP assay
	GTX112957	HDAC2 antibody	Rat	Rb pAb	WB
	 GTX12169	HDAC2 antibody [HDAC2-62]	Hu, Ms, Cow, Dog, Rat	Ms mAb	ELISA, ICC/IF, IHC, IP, WB
	GTX61236	HDAC2 antibody [Y461], C-term	Hu, Ms, Rat	Rb mAb	FACS, ICC/IF, IHC-M, IHC-P, IP, WB
	GTX50236	HDAC2 (phospho Ser394) antibody	Hu, Ms, Rat	Rb pAb	ICC/IF, IHC, IHC-P, WB
<b>HDAC3</b>	 GTX109679	HDAC3 antibody [C3], C-term	Hu	Rb pAb	ICC/IF, IHC-P, IP, WB, ChIP assay
	 GTX113303	HDAC3 antibody	Hu, Rat	Rb pAb	ICC/IF, IHC-P, IP, WB, ChIP assay
	 GTX103699	HDAC3 antibody [N2C3]	Hu	Rb pAb	ICC/IF, WB
<b>HDAC4</b>	GTX110231	HDAC4 antibody [N3C1], Internal	Hu	Rb pAb	ICC/IF, IHC-P, IP, WB
	 GTX12171	HDAC4 antibody [HDAC-144]	Hu, Ms, Rat	Ms mAb	ELISA, ICC/IF, IP, WB
	GTX85618	HDAC4 (phospho Ser632) antibody	Hu, Ms, Rat	Rb pAb	IHC-P, WB
<b>HDAC5</b>	GTX21439	HDAC5 antibody	Hu, Ms, Rat	Rb pAb	IHC-P, IP, WB
	GTX59634	HDAC5 antibody	Hu, Ms, Rat	Rb pAb	IHC, IP, WB
	GTX50238	HDAC5 (phospho Ser498) antibody	Hu, Ms, Rat	Rb pAb	IHC, IHC-P, WB
<b>HDAC6</b>	 GTX100722	HDAC6 antibody [N1], N-term	Hu	Rb pAb	ICC/IF, WB
	 GTX84377	HDAC6 antibody [4C5]	Hu, Dog, Mk, Rat	Ms mAb	FACS, ICC/IF, WB
<b>HDAC7</b>	GTX114179	HDAC7 antibody [C2C3], C-term	Hu	Rb pAb	ICC/IF, IHC-P, IP, WB
	GTX105985	HDAC7 antibody	Hu	Rb pAb	ICC/IF, WB
<b>HDAC8</b>	GTX113981	HDAC8 antibody	Hu, Ms, Rat	Rb pAb	WB
	GTX105074	HDAC8 antibody [N1C2]	Hu, Ms	Rb pAb	WB
<b>HDAC9</b>	GTX63403	HDAC9 antibody [EPR5223]	Hu, Rat	Rb mAb	ICC/IF, IHC, IHC-P, WB
<b>HDAC10</b>	GTX84387	HDAC10 antibody [2H6]	Hu	Ms mAb	FACS, ICC/IF, IHC, IHC-P, WB
<b>HDAC11</b>	GTX116403	HDAC11 antibody	Hu, Ms	Rb pAb	IHC-P, WB
<b>EZH1</b>	GTX108013	EZH1 antibody [N1], N-term	Hu	Rb pAb	ICC/IF, IHC-P, WB
<b>EZH2</b>	GTX110384	EZH2 antibody	Hu	Rb pAb	ICC/IF, WB, ChIP assay
	GTX60367	EZH2 antibody [GT9005]	Hu	Ms mAb	ChIP assay
	 GTX62838	EZH2 (phospho Thr487) antibody [EPR1410]	Hu, Ms, Rat	Rb mAb	IHC-M, IHC-P, IP, WB
<b>G9a</b>	GTX128164	G9a antibody	Hu	Rb pAb	ICC/IF, IHC-P, IP, WB
	GTX120210	G9a antibody [C1C2], Internal	Ms	Rb pAb	WB
<b>SMYD</b>	GTX119484	SMYD1 antibody	Hu, Ms, Rat	Rb pAb	ICC/IF, IHC-P, WB
	GTX116510	SMYD2 antibody	Hu	Rb pAb	ICC/IF, WB
	 GTX121945	SMYD3 antibody	Hu, Ms	Rb pAb	ICC/IF, IHC-P, IP, WB, ChIP assay
	GTX628535	SMYD3 antibody [GT1088]	Hu	Ms mAb	IHC-P, WB
	GTX1110518	SMYD5 antibody [C2C3], C-term	Hu	Rb pAb	IHC-P, WB
<b>SUV39H1</b>	 GTX112263	SUV39H1 antibody [N3C3]	Hu, Ms	Rb pAb	ICC/IF, IHC-P, IP, WB
<b>PRMT1</b>	GTX128211	PRMT1 antibody	Hu	Rb pAb	ICC/IF, WB
	GTX630186	PRMT1 antibody [GT779]	Hu, Ms	Ms mAb	ICC/IF, WB
<b>PRMT2</b>	GTX103749	PRMT2 antibody [N1C2]	Hu	Rb pAb	ICC/IF, IHC-P, WB
<b>PRMT3</b>	GTX115367	PRMT3 antibody [C1C3]	Hu, Ms	Rb pAb	ICC/IF, WB
<b>PRMT4</b>	GTX129040	CARM1 antibody	Hu	Rb pAb	IHC-P, WB
	GTX80395	CARM1 antibody [3H2]	Hu, Mk, Rat	Ms mAb	ELISA, FACS, ICC/IF, IHC, IHC-P, WB
<b>PRMT5</b>	GTX115409	PRMT5 antibody [N3C3]	Hu	Rb pAb	ICC/IF, IHC-P, WB
	GTX116004	PRMT5 antibody [N1C1]	Hu	Rb pAb	IHC-P, IP, WB, ChIP assay
	GTX628488	PRMT5 antibody [GT3610]	Hu, Rat	Ms mAb	IP, WB
<b>PRMT6</b>	GTX12192	PRMT6 antibody	Hu	Rb pAb	ICC/IF, IP, WB
	GTX82806	PRMT6 antibody [4G2]	Hu, Mk	Ms mAb	ELISA, WB
<b>PRMT7</b>	GTX116570	PRMT7 antibody	Hu, Ms, Rat	Rb pAb	ICC/IF, IHC-P, IP, WB, ChIP assay
<b>KDM2B</b>	GTX104868	FBXL10 antibody [C3], C-term	Hu, Ms	Rb pAb	WB
<b>KDM3A</b>	GTX80407	KDM3A antibody [1E12]	Hu	Ms mAb	ELISA, IHC, IHC-P, WB
<b>KDM3B</b>	GTX116198	KDM3B antibody [C2C3], C-term	Hu	Rb pAb	IP, WB
<b>KDM4A</b>	GTX116429	KDM4A / JHDM3A / JMJD2A antibody [N1N3]	Hu	Rb pAb	WB
	GTX82792	KDM4A antibody [5H1]	Hu	Ms mAb	ELISA, ICC/IF, IHC, IHC-P, WB
<b>KDM4B</b>	GTX50909	KDM4B antibody	Hu	Rb pAb	WB
	GTX53804	JMJD2B antibody	Hu	Rb pAb	FACS, IHC, IHC-P, WB
<b>KDM4C</b>	GTX84280	KDM4C antibody [5B9]	Hu	Ms mAb	ICC/IF, IHC, IHC-P, WB
	GTX84279	KDM4C antibody [4B1]	Hu	Ms mAb	FACS, ICC/IF, IHC, IHC-P
	GTX121246	KDM6A antibody [N2C1], Internal	Hu	Rb pAb	ICC/IF, IHC-P, IP, WB, ChIP assay
<b>KDM6A</b>	GTX120873	KDM6A antibody [C2C3], C-term	Hu	Rb pAb	WB
	GTX630412	KDM6A antibody [GT1612]	Hu	Ms mAb	WB
	GTX110045	JARID1C antibody [N1N2-2], N-term	Hu	Rb pAb	WB
	GTX109831	JARID1C antibody [N1N2], N-term	Hu	Rb pAb	WB
<b>JHDM1A</b>	GTX82550	JHDM1a/FBXL11 antibody, Internal	Hu	Rb pAb	ELISA, IHC, IHC-P, WB
<b>JMJD3</b>	GTX124222	JMJD3 antibody [C2], C-term	Hu	Rb pAb	IHC-P, WB
<b>JMJD4</b>	GTX85252	JMJD4 antibody	Hu, Rat	Rb pAb	ELISA, ICC/IF, IHC, WB
<b>JMJD5</b>	GTX85251	JMJD5 antibody	Hu, Ms, Rat	Rb pAb	ELISA, ICC/IF, IHC, WB
<b>JMJD6</b>	GTX110746	PSR antibody	Hu, Ms	Rb pAb	IHC-P, WB
<b>LSD1</b>	GTX115660	LSD1 antibody	Hu	Rb pAb	WB
	GTX83263	LSD1/AOF2 antibody [1B2E5]	Hu, Ms, Mk	Ms mAb	ELISA, IHC, IHC-P, WB

