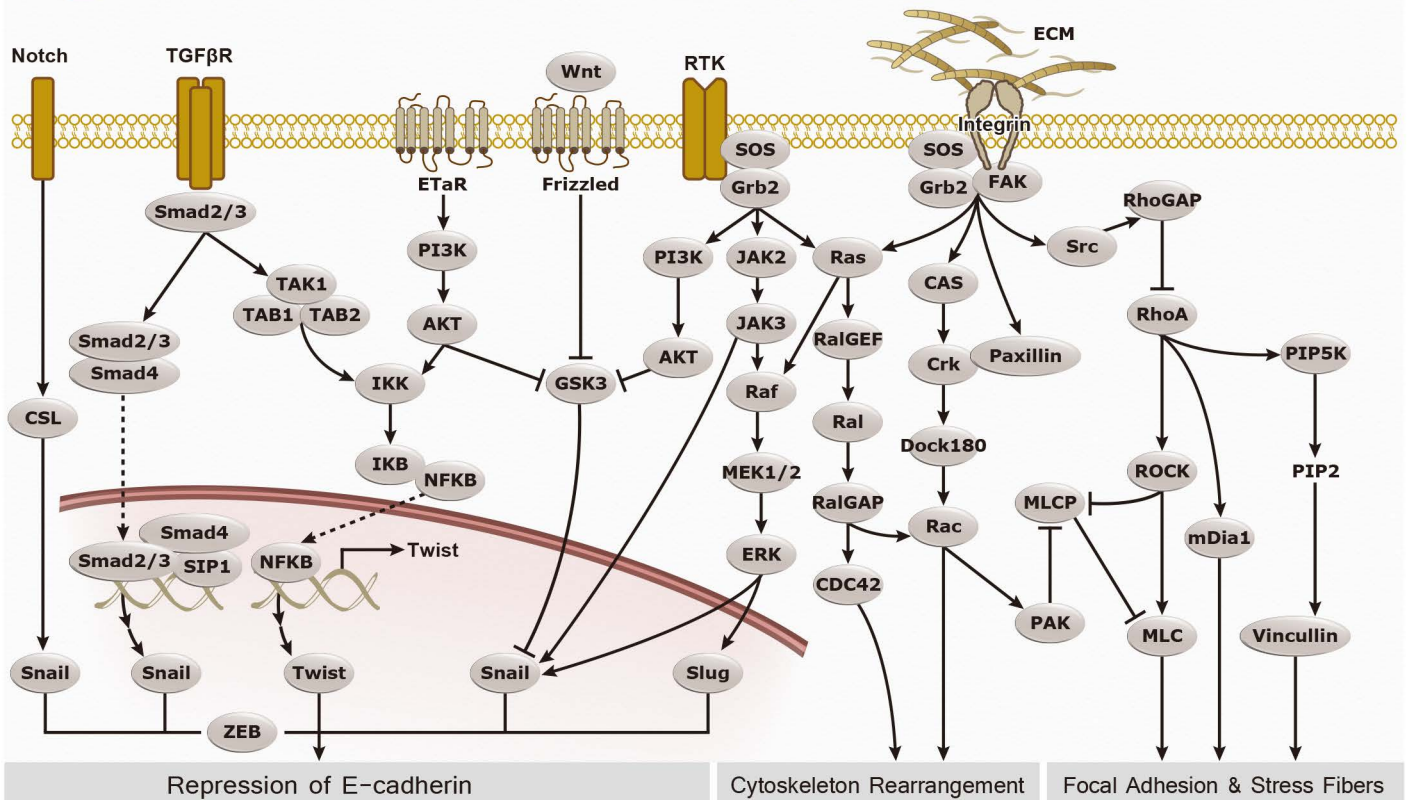




Epithelial-Mesenchymal Transition



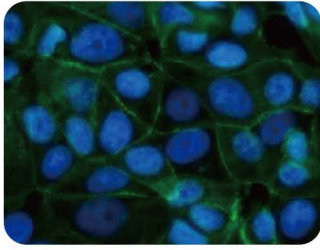
Epithelial-mesenchymal transition (EMT) is a process whereby tightly-interacting and immotile epithelial cells acquire the phenotype of loosely-adherent and motile mesenchymal cells. EMT not only facilitates morphogenesis during embryonic development but also promotes invasion and metastasis in tumors. Pathological EMT is associated with E-cadherin repression, which has been shown to contribute to tumor progression. Several oncogenic pathways (TGF- β , Wnt/ β -catenin, Integrins, Notch, etc) have been reported to induce EMT via cytoskeleton reorganization and activation of E-Cadherin repressors, including Snail, Slug, SIP1, ZEB1, and TCF3. GeneTex is proud to introduce our new line of antibodies for the study of EMT.

EMT Related Antibody Panels

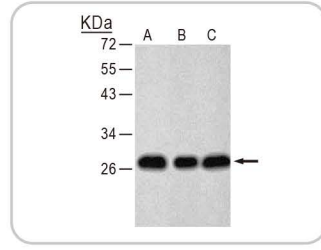
Cat. No.	Product name	Reagents Included	Host & Clonality	Reactivity	Application
GTX300096	EMT Markers	Vimentin antibody	Rb pAb	Hu, Ms, Rat	ICC/IF, IHC-P, WB
		TWIST antibody	Rb pAb	Hu	WB
		Fibronectin antibody [N1N2], N-term	Rb pAb	Hu	ICC/IF, IHC-P, WB
		E-Cadherin antibody [EP700Y]	Rb mAb	Hu	ICC/IF, IHC-P, IP, WB
		Epithelial Antigen (Ep-CAM) antibody [E144], C-term	Rb mAb	Hu, Ms, Rat	WB
		Rabbit IgG antibody (HRP)	Gt pAb	Hu, Rb	ELISA, WB

EMT-Inducing Transcription Factors

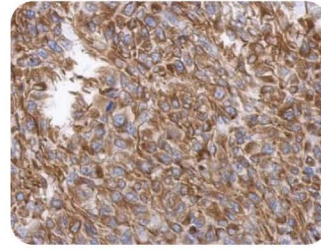
Cat. No.	Product name	Host & Clonality	Reactivity	Application
GTX25060	FOXC2 antibody, C-term	Gt pAb	Hu, Ms, Rat, Other	ELISA, IHC-P, WB
GTX63363	Goosecoid antibody [EPR4847]	Rb mAb	Hu	IP, WB
GTX30885	SLUG antibody	Rb pAb	Hu, Ms	ICC/IF, WB
GTX125918	SNAI1 antibody	Rb pAb	Hu	WB
GTX89239	Snail homolog 1 / SNAI1 antibody, N-term	Gt pAb	Hu, Ms, Rat	ELISA, WB
GTX60287	SOX10 antibody	Rb pAb	Hu, Ms, Rat	ELISA, ICC/IF, IHC-F, IHC-P, WB
GTX109885	TCF3 antibody	Rb pAb	Hu, Ms	IP, WB
GTX61704	TCF4 antibody [EP2033Y], N-term	Rb mAb	Hu	FACS, ICC/IF, IHC-P, IP, WB
GTX127310	TWIST antibody	Rb pAb	Hu	WB
GTX105278	ZEB1 antibody [N2C1], Internal	Rb pAb	Hu	ICC/IF, IP, WB
GTX87688	ZEB2 antibody	Rb pAb	Hu, Ms	ELISA, IHC, WB



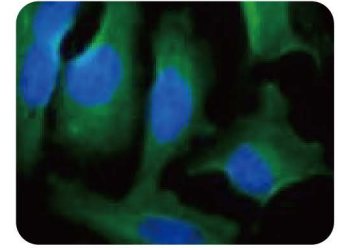
E-cadherin antibody (GTX100443)
IFA analysis of paraformaldehyde-fixed MCF7 cells, using GTX100443 (Green) antibody and Hoechst 33342 staining (Blue).



TWIST antibody (GTX127310)
WB analysis of (A) Raji (B) THP-1 (C) HL-60 cell lysates.



Vimentin antibody (GTX100619)
IHC analysis of paraaffin-embedded RT2 xenograft.



Fibronectin antibody [N1N2], N-term (GTX112794)
IFA analysis of paraformaldehyde-fixed HeLa cells, using Fibronectin (GTX112794) antibody.

Epithelial Markers (downregulated in EMT)

Cat. No.	Product name	Host & Clonality	Reactivity	Application
GTX26586	Collagen IV antibody	Rb pAb	Hu, Other	Dot, ELISA, IHC-Fr, IHC-P, IM, IP, WB
GTX112977	Cytokeratin 18 antibody [N1N3]	Rb pAb	Hu	ICC/IF, IHC-P, WB
GTX61523	Cytokeratin 18 antibody, C-term	Rb pAb	Hu, Ms, Rat	FACS, ICC/IF, IHC-P, IP, WB
GTX61564	Cytokeratin 19 antibody [EP1580Y], C-term	Rb mAb	Hu	FACS, ICC/IF, IHC-P, IP, WB
⊕ GTX112826	Cytokeratin 19 antibody [N1C1]	Rb pAb	Hu	ICC/IF, IHC-P, WB
GTX110311	Cytokeratin 8 antibody	Rb pAb	Hu, Ms	ICC/IF, IHC-P, WB
GTX63402	Desmoplakin antibody [EPR4383(2)]	Rb mAb	Hu, Rat	ICC/IF, WB
GTX100443	E-cadherin antibody	Rb pAb	Hu	ICC/IF, IHC-P, WB
GTX11512	E-Cadherin antibody [DECMA-1]	Rat mAb	Hu, Ms, Other	ICC/IF, IHC-Fr, IP, WB
⊕ GTX61329	E-Cadherin antibody [EP700Y]	Rb mAb	Hu	ICC/IF, IHC-P, IP, WB
GTX629692	E-cadherin antibody [GT311]	Ms mAb	Hu	WB
GTX78217	Laminin 1 antibody	Rb pAb	Hu, Ms, Rat	ICC/IF, WB
GTX100459	MUC1 antibody	Rb pAb	Hu	ICC/IF, IHC-P, WB
GTX62437	MUC1 antibody [EPR1023], C-term	Rb mAb	Hu	FACS, ICC/IF, IHC-P, IP, WB
GTX114949	Occludin antibody	Rb pAb	Hu	IHC-P, WB
GTX85016	OCLN antibody	Rb pAb	Hu, Ms, Rat	ELISA, IHC, WB
GTX108592	ZO-1 antibody	Rb pAb	Hu, Ms	IHC-P, WB
GTX108613	ZO-1 antibody [N1N2], N-term	Rb pAb	Hu	ICC/IF, IHC-P, WB

Mesenchymal Markers (upregulated in EMT)

Cat. No.	Product name	Host & Clonality	Reactivity	Application
GTX100095	alpha smooth muscle Actin antibody	Rb pAb	Hu, Ms, Rat, Other	IHC-P, WB
GTX102996	COL1A2 antibody [C2C3], C-term	Rb pAb	Hu, Ms	ICC/IF, WB
⊕ GTX26308	Collagen I antibody [COL-1]	Ms mAb	Hu, Rat, Other	Dot, ELISA, ICC/IF, IHC-Fr
GTX111643	Collagen III alpha1 antibody [C2C3-2], C-term	Rb pAb	Hu	ICC/IF, IHC-P, WB
⊕ GTX26310	Collagen III antibody [FH-7A]	Ms mAb	Hu, Rat	Dot, ELISA, IHC-Fr, IHC-P, WB
GTX74108	CXCL1 antibody	Rb pAb	Ms, Rat	IP, WB
GTX102651	DDR2 antibody [C2C3], C-term	Rb pAb	Hu, Ms	IHC-P, WB
GTX81891	FGF1 Antibody, N-term	Rb pAb	Hu	ELISA, IHC, WB
GTX83243	FGF2 antibody [2H5G2C11]	Ms mAb	Hu	ELISA, IHC, WB
GTX62156	FGF2 antibody [EP1735]	Rb mAb	Hu	FACS, IP, WB
GTX38533	FGF8 antibody, C-term	Rb pAb	Hu	IHC-P, WB
GTX61206	Fibronectin antibody [F1]	Rb mAb	Hu, Ms, Rat	IHC-M, IHC-P, IP, WB
⊕ GTX112794	Fibronectin antibody [N1N2], N-term	Rb pAb	Hu	ICC/IF, IHC-P, WB
⊕ GTX104577	MMP2 antibody	Rb pAb	Hu, Ms	ICC/IF, IHC-P, WB
GTX30147	MMP2 antibody [MMP2/8B4]	Ms mAb	Hu, Ms, Rat	ELISA, IHC-Fr, IHC-P, IP, WB
GTX61509	MMP-3 antibody [EP1186Y], C-term	Rb mAb	Hu, Ms, Rat	ICC/IF, IHC-P, WB
GTX100723	MMP3 antibody [N3C1], Internal	Rb pAb	Hu	ICC/IF, IHC-P, WB
GTX62122	MMP-9 antibody [EP1254]	Rb mAb	Hu, Rat	FACS, ICC/IF, IHC-P, WB
⊕ GTX100458	MMP9 antibody [N2C1], Internal	Rb pAb	Hu	ICC/IF, IHC-P, WB
GTX61612	N-Cadherin antibody [EPR1792Y], C-term	Rb mAb	Hu, Ms, Rat	FACS, ICC/IF, IHC-M, IHC-P, IP, WB
GTX112734	N-cadherin antibody [N1N3]	Rb pAb	Hu, Ms	IHC-P, WB
GTX100550	PAI-1 antibody [N1C2]	Rb pAb	Hu, Ms	IHC-P, WB
GTX62977	S100A4 antibody [EPR2761(2)], C-term	Rb mAb	Hu	ICC/IF, IHC-P, IP, WB
⊕ GTX62552	Tenascin-C antibody [EPR4219]	Rb mAb	Hu, Ms, Rat	ICC/IF, IHC-P, WB
GTX110630	TGF beta 1 antibody	Rb pAb	Hu, Ms	ICC/IF, IHC-P, WB
⊕ GTX100619	Vimentin antibody	Rb pAb	Hu, Ms, Rat	ICC/IF, IHC-P, WB
GTX629743	Vimentin antibody [GT7812]	Ms mAb	Hu, Ms, Rat	ICC/IF, WB
⊕ GTX103475	Vitronectin antibody	Rb pAb	Hu	ELISA, IHC-P, WB
GTX61399	Vitronectin antibody [EP873Y]	Rb mAb	Hu, Ms, Rat	ICC/IF, IHC-M, IHC-P, WB

⊕ citation

★ See website for more products and detailed information.