



# Epitope Tag Antibodies



## 6x His Tag

| Cat. No.     | Product                    | Host & Clonality | Application                 |
|--------------|----------------------------|------------------|-----------------------------|
| GTX115045    | 6x His antibody            | Rb pAb           | IP, WB                      |
| GTX30501     | 6X His antibody            | Rb pAb           | ELISA, ICC/IF, IHC, WB      |
| GTX115045-01 | 6x His antibody (HRP)      | Rb pAb           | WB                          |
| GTX74966     | 6X His antibody [ADI.I.10] | Ms mAb           | ELISA, FACS, IHC-Fr, IP, WB |
| GTX18184     | 6x His antibody [HIS.H8]   | Ms mAb           | ELISA, ICC/IF, IHC, IP, WB  |
| GTX30500     | 6X His antibody            | Gt pAb           | ELISA, ICC/IF, IHC, WB      |

## GST Tag

| Cat. No.  | Product                | Host & Clonality | Application        |
|-----------|------------------------|------------------|--------------------|
| GTX110736 | GST antibody           | Rb pAb           | IP, WB             |
| GTX30509  | GST antibody           | Rb pAb           | ELISA, ICC/IF, WB  |
| GTX114099 | GST antibody (HRP)     | Rb pAb           | WB                 |
| GTX70195  | GST antibody [3G10]    | Ms mAb           | WB                 |
| GTX18183  | GST antibody [GST.B6]  | Ms mAb           | IHC, IP, WB        |
| GTX26612  | GST antibody           | Gt pAb           | Dot, ELISA, IP, WB |
| GTX30516  | GST antibody (Agarose) | Gt pAb           | IP                 |

## Myc Tag

| Cat. No.  | Product                    | Host & Clonality | Application  |
|-----------|----------------------------|------------------|--|
| GTX115046 | Myc tag antibody           | Rb pAb           | WB   |
| GTX29106  | Myc tag antibody           | Rb pAb           | CC, ELISA, ICC/IF, IHC, IM, IP, WB                   |
| GTX20032  | Myc tag antibody [9E10]    | Ms mAb           | AF, CC, ELISA, FACS, IHC-Fr, IHC-P, IM, IP, Puri, WB |
| GTX10910  | Myc antibody [JAC6]        | Rat mAb          | IHC-Fr, IP, WB, ICC/IF                               |
| GTX21253  | Myc tag antibody (Agarose) | Gt pAb           | IP   |
| GTX21261  | Myc tag antibody (HRP)     | Gt pAb           | ELISA, ICC/IF, WB                                    |

## HA Tag

| Cat. No.     | Product                     | Host & Clonality | Application           |
|--------------|-----------------------------|------------------|-----------------------|
| GTX115044    | HA tag antibody             | Rb pAb           | ICC/IF, IP, WB        |
| GTX29110     | HA tag antibody             | Rb pAb           | ELISA, ICC/IF, IP, WB |
| GTX16918     | HA tag antibody [12CA5]     | Ms mAb           | ELISA, WB             |
| GTX30545     | HA antibody                 | Gt pAb           | ELISA, ICC/IF, WB     |
| GTX30552     | HA tag antibody (Agarose)   | Gt pAb           | IP                    |
| GTX127376    | HA tag (IgY) antibody       | Ch pAb           | WB                    |
| GTX127376-01 | HA tag (IgY) antibody (HRP) | Ch pAb           | WB                    |

## Selected Application References

### 6x His antibody (GTX30501)

Yuan, J. et al. (2010) *J Biol Chem.* 285:40397-408. (WB)  
Davis, B.M. et al. (2009) *Nucleic Acids Res.* 37:5757-67. (WB)

### GST antibody [3G10] (GTX70195)

Luque, C.M. et al. (2003) *J Biol Chem.* 278:2686-91. (WB)

### Myc tag antibody [9E10] (GTX20032)

Ratsima, H. et al. (2011) *PNAS.* 108:E914-23. (WB)  
Cagnac, O. et al. (2007) *J Biol Chem.* 282:24284-93. (WB)

### Myc antibody [JAC6] (GTX10910)

Yang, L. et al. (2008) *J Biol Chem.* 283:11823-31. (ICC/IF)

### Myc tag antibody (Agarose) (GTX21253)

Oikonomou, G. et al. (2011) *PLoS Biol.* 9:e1001121. (IP)  
Heiman, M.G. et al. (2009) *Cell.* 137:344-55. (IP)

### Myc tag antibody (HRP) (GTX21261)

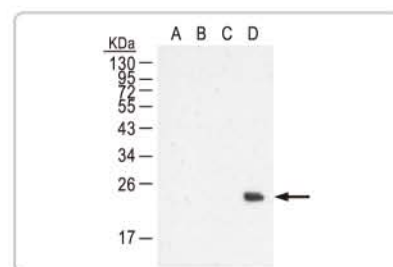
Vitari, A.C. et al. (2011) *Nature.* 474:403-6. (WB)  
Biton, S. et al. (2011) *Cell.* 145:92-103. (WB)

### HA tag antibody (GTX29110)

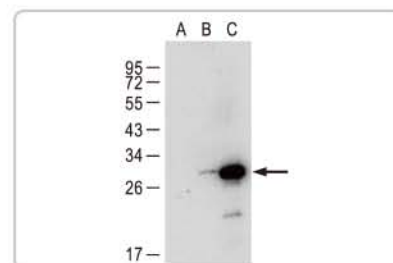
Antonino, E.A. et al. (2009) *BMC Cell Biol.* 10:58. (ICC/IF)  
Huveneers, S. et al. (2007) *Cancer Res.* 67:2693-700.  
Ogden, S.K. et al. (2006) *J Biol Chem.* 281:7237-43. (ICC/IF)

### HA tag antibody [12CA5] (GTX16918)

Roberts, D.N. et al. (2006) *Mol Cell.* 22:633-44. (IP)



GTX115045 6xHis antibody



GTX110736 GST antibody

## DDDDK / Flag Tag

| Cat. No.  | Product                  | Host & Clonality | Application                |
|-----------|--------------------------|------------------|----------------------------|
| GTX115043 | DDDDK antibody           | Rb pAb           | WB                         |
| GTX77457  | DDDDK antibody           | Rb pAb           | ELISA, ICC/IF, WB          |
| GTX80656  | DDDDK antibody           | Ms mAb           | ICC/IF, IP, WB             |
| GTX82562  | Flag tag antibody [FG4R] | Ms mAb           | ELISA, ICC/IF, IHC, IP, WB |
| GTX21240  | DDDDK antibody (Agarose) | Gt pAb           | IP                         |

## Fluorescent Protein Tag

| Cat. No.  | Product               | Host & Clonality | Application                |
|-----------|-----------------------|------------------|----------------------------|
| GTX113617 | GFP antibody          | Rb pAb           | ICC/IF, IP, WB, IHC-Wm     |
| GTX20290  | GFP antibody          | Rb pAb           | EM, ICC/IF, IHC-P, IP, WB  |
| GTX21218  | GFP antibody [9F9.F9] | Ms mAb           | ELISA, IHC, WB             |
| GTX82564  | GFP antibody [GF28R]  | Ms mAb           | ELISA, ICC/IF, IHC, IP, WB |
| GTX26673  | GFP antibody          | Gt pAb           | ELISA, IHC-P, IP, WB       |
| GTX124117 | GFP (IgY) antibody    | Ch pAb           | WB                         |
| GTX13970  | GFP antibody          | Ch pAb           | IHC, WB                    |
| GTX59862  | RFP (dsRed) antibody  | Rb pAb           | ICC/IF, IP, WB             |
| GTX82561  | RFP antibody [RF5R]   | Ms mAb           | ELISA, ICC/IF, IHC, IP, WB |
| GTX59788  | mCherry antibody      | Rb pAb           | WB                         |
| GTX59680  | BFP antibody          | Rb pAb           | WB                         |
| GTX59717  | CFP antibody          | Rb pAb           | WB                         |

## V5 Tag

| Cat. No.  | Product               | Host & Clonality | Application                        |
|-----------|-----------------------|------------------|------------------------------------|
| GTX117997 | V5 antibody           | Rb pAb           | ICC/IF, IP, WB                     |
| GTX30564  | V5 antibody           | Rb pAb           | ELISA, ICC/IF, WB                  |
| GTX21325  | V5 antibody (HRP)     | Rb pAb           | ELISA, ICC/IF, WB                  |
| GTX42525  | V5 antibody [sv5-pk1] | Ms mAb           | ELISA, ICC/IF, IHC-Fr, IP, RIA, WB |
| GTX38821  | V5 antibody [SV5-Pk4] | Ms mAb           | ELISA, ICC/IF, IP, WB              |
| GTX30570  | V5 antibody (Agarose) | Gt pAb           | IP                                 |

## Other Tags

| Cat. No. | Product                        | Host & Clonality | Application            |
|----------|--------------------------------|------------------|------------------------|
| GTX23401 | AU1 tag antibody               | Rb pAb           | ELISA, ICC/IF, WB      |
| GTX23400 | AU1 tag antibody               | Gt pAb           | ELISA, ICC/IF, WB      |
| GTX23405 | AU5 tag antibody               | Rb pAb           | ELISA, ICC/IF, WB      |
| GTX23404 | AU5 tag antibody               | Gt pAb           | ELISA, ICC/IF, WB      |
| GTX23397 | E tag antibody                 | Rb pAb           | ELISA, WB              |
| GTX19368 | E tag antibody (Agarose)       | Gt pAb           | IP                     |
| GTX77448 | E tag antibody (HRP)           | Ch pAb           | WB                     |
| GTX30537 | Glu-Glu tag antibody           | Rb pAb           | ELISA, ICC/IF, IHC, WB |
| GTX30789 | Glu-Glu tag antibody [Glu-Glu] | Ms mAb           | ICC/IF, IP, WB         |
| GTX21267 | Glu-Glu tag antibody (HRP)     | Gt pAb           | ELISA, ICC/IF, IHC, WB |
| GTX23414 | HSV tag antibody               | Rb pAb           | ELISA, WB              |
| GTX19398 | HSV tag antibody (Agarose)     | Gt pAb           | IP                     |
| GTX23859 | KT3 tag antibody               | Rb pAb           | ELISA, ICC/IF, WB      |
| GTX12216 | KT3 tag antibody (HRP)         | Gt pAb           | ELISA, ICC/IF, IHC, WB |
| GTX78390 | S tag antibody                 | Rb pAb           | ELISA, IHC, IP, WB     |
| GTX39149 | S tag antibody [SBSTAGa]       | Ms mAb           | ELISA, FACS, ppf       |
| GTX19321 | S tag antibody                 | Gt pAb           | ELISA, ICC/IF, WB      |
| GTX19369 | S tag antibody (Agarose)       | Gt pAb           | IP                     |
| GTX30555 | T7 tag antibody                | Rb pAb           | ELISA, ICC/IF, IHC, WB |
| GTX29138 | T7 tag antibody                | Gt pAb           | ELISA, ICC/IF, WB      |
| GTX21230 | T7 tag antibody (Agarose)      | Gt pAb           | IP                     |
| GTX19257 | VSV-G tag antibody             | Rb pAb           | ELISA, ICC/IF, WB      |
| GTX23861 | VSV-G tag antibody             | Gt pAb           | ELISA, ICC/IF, WB      |
| GTX41487 | VSV-G tag antibody (Agarose)   | Gt pAb           | IP                     |

## Selected Application References

### DDDDK antibody (GTX77457)

Hsu, Y.F. et al. (2011) *Biochim Biophys Acta*. 1820:104-15. (WB)

### DDDDK antibody (GTX80656)

Sud, N. et al. (2008) *Am J Physiol Lung Cell Mol Physiol*. 294:L582-91. (WB)

### GFP antibody (GTX20290)

Dunlap, S.M. et al. (2007) *PNAS*. 104:11736-41. (IHC)

### GFP antibody [9F9.F9] (GTX21218)

Luxen, S. et al. (2009) *J Cell Sci*. 122:1238-47. (WB)  
Catalucci, D. et al. (2009) *J Cell Biol*. 184:923-33. (WB)

### GFP antibody (GTX26673)

Daquinag, A.C. et al. (2011) *Cell Stem Cell*. 9:74-86. (ICC/IF)  
Zhang, Y. et al. (2009) *Cancer Res*. 69:5259-66. (ICC/IF)  
Gill, J.C. et al. (2008) *Endocrinology*. 149:4596-604. (IHC)

### GFP antibody (GTX13970)

Micheva, K.D. et al. (2010) *Cold Spring Harb Protoc*. 2010(11):pdb.prot5526.

### mCherry antibody GTX59788

Lee, S. et al. (2012) *J Biol Chem*. 287:5988-6001. (ICC/IF)  
Nabhan, J.F. et al. (2012) *PNAS*. 109(11):4146-51. (EM, WB)

### V5 antibody (GTX30564)

Pae, S.H. et al. (2008) *Dev Dyn*. 237:962-78. (ICC/IF)

### V5 antibody (HRP) GTX21325

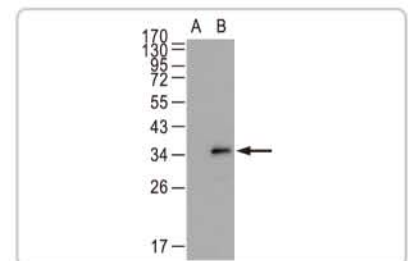
Misaghi, S. et al. (2009) *Mol Cell Biol*. 29:2181-92. (WB)

### V5 antibody (Agarose) (GTX30570)

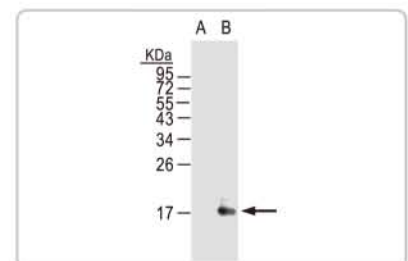
Sakamoto, K. et al. (2008) *J Cell Sci*. 121:1613-23. (IP)

### T7 antibody (GTX30555)

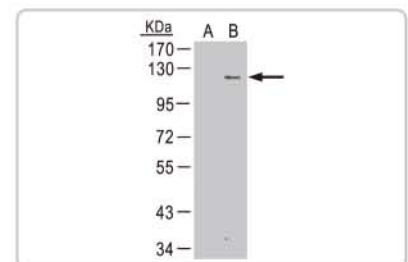
Machado, P. et al. (2011) *J Neurosci*. 31:3-14. (WB)



GTX113617 GFP antibody



GTX115044 HA tag antibody



GTX117997 V5 antibody