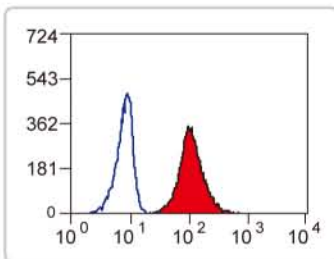
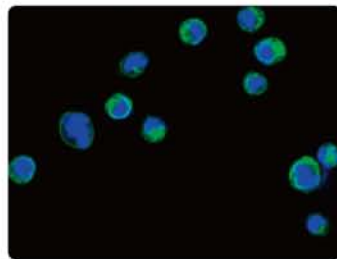


# Granulocyte Markers

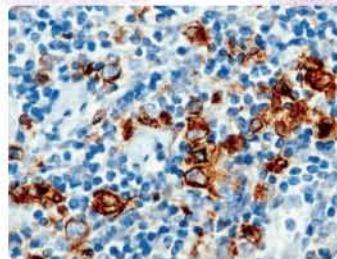
## Pan-Granulocyte Markers



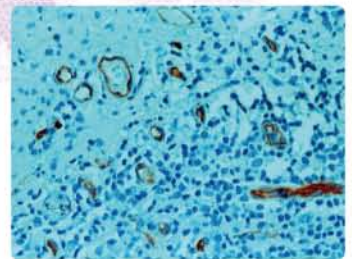
**CD11b antibody [ICRF44] (GTX76296):**  
FACS of human peripheral blood granulocytes (red).



**CD18 antibody [10E12] (GTX83119):**  
Confocal IF analysis of HL60 cells (green).



**CD15 antibody [MMA] (GTX17080):**  
IHC analysis of human Hodgkins lymphoma.



**CD34 antibody [QBEND-10] (GTX73823):**  
IHC analysis of paraffin-embedded human tonsil tissue.

★ Conjugated antibodies available for FACS

	Cat. No.	Product name	Host & Clonality	Reactivity	Application
Granulocyte	GTX14497	Granulocyte antibody [O.N.315]	Ms mAb (IgG1)	Hu	ICC/IF, IHC-Fr, IHC-P
	GTX17856	Granulocyte antibody [SPM250] (ready-to-use)	Ms mAb (IgG1)	Hu	IHC-P
CD11b / Integrin αM	GTX100827	CD11b antibody	Rb pAb	Hu	WB
	GTX61534	CD11b antibody [EP1345Y]	Rb mAb	Hu	FACS, ICC/IF, IHC-P, IP, WB
	★ GTX44264	CD11b antibody [BEAR-1]	Ms mAb (IgG1)	Hu	FACS, IHC-Fr
	★ GTX76293	CD11b antibody [ICRF44]	Ms mAb (IgG1)	Hu, Bb, Mk	FACS, IHC-Fr, IP
	★ GTX21046	CD11b antibody [MEM-174]	Ms mAb (IgG2a)	Hu	FACS, IP
	★ GTX76062	CD11b antibody [OX-42]	Ms mAb (IgG2a)	Rat	FACS, IHC-Fr, IP, ICC/IF
	★ GTX80050	CD11b antibody [M1/70] (Functional Grade)	Rat mAb (IgG2b)	Hu, Ms, Rb	FACS, IHC-Fr, IP, FuncS
	★ GTX42473	CD11b antibody [M1/70.15]	Rat mAb (IgG2b)	Hu, Ms, Rb	FACS, IHC-Fr, IHC-P, IP, FuncS
CD15	GTX37536	CD15 antibody	Rb pAb	Hu, Ms, Rat	ELISA, WB
	GTX42400	CD15 antibody [MCS-1]	Ms mAb (IgG3)	Hu	FACS
	GTX40137	CD15 antibody [28]	Ms mAb (IgM)	Hu	FACS, IHC-F, IHC-Fr, IP
	★ GTX20665	CD15 antibody [MEM-158]	Ms mAb (IgM)	Hu	FACS, IP
CD16	★ GTX42379	CD16 antibody [DJ130c]	Ms mAb (IgG1)	Hu	FACS, IHC-Fr, IHC-P
	★ GTX20664	CD16 antibody [MEM-154]	Ms mAb (IgG1)	Hu	FACS, IP, WB
	GTX75391	CD16 antibody [2H7]	Ms mAb (IgG2a)	Hu	IHC-P
	GTX24203	CD16 antibody [MEM-168]	Ms mAb (IgM)	Hu, Mk	FACS
	GTX30884	CD16 antibody [YFC120.5]	Rat mAb (IgG2b)	Hu	FACS, IHC-Fr
CD18 / Integrin β2	GTX61491	CD18 antibody [EP1286Y]	Rb mAb	Hu	IP, WB
	★ GTX20657	CD18 antibody [MEM-48]	Ms mAb (IgG1)	Hu	FACS, IHC-Fr, IP, WB
	★ GTX75788	CD18 antibody [MEM-148]	Ms mAb (IgG1)	Hu	FACS, IP, WB
	★ GTX25378	CD18 antibody [WT.3]	Ms mAb (IgG1)	Rat	FACS, IHC-Fr, IP
	GTX83119	CD18 antibody [10E12]	Ms mAb (IgG2b)	Hu, Ms	ELISA, ICC/IF
	★ GTX80044	CD18 antibody [M18/2]	Rat mAb (IgG2a)	Ms	FACS, IHC-Fr, IHC-P, IP, WB, FuncS
	★ GTX74603	CD18 antibody [YTS 213.1]	Rat mAb (IgG2a)	Ms	FACS, IHC-Fr, IP
	★ GTX76238	CD18 antibody [YFC118.3]	Rat mAb (IgG2b)	Hu, Dog	FACS, IHC-Fr, IP

★ Conjugated antibodies available for FACS

	Cat. No.	Product name	Host & Clonality	Reactivity	Application
CD34	GTX61737	CD34 antibody [EP373Y]	Rb mAb	Hu	FACS, ICC/IF, IHC-M, IHC-P, IP, WB
	GTX83253	CD34 antibody [4H5E7, 9B10D4]	Ms mAb	Hu	ELISA, ICC/IF, IHC
	GTX73823	CD34 antibody [QBEND-10]	Ms mAb (IgG1)	Hu	IHC-P, WB
	GTX28158	CD34 antibody [MEC14.7]	Rat mAb (IgG2a)	Ms	ELISA, FACS, ICC/IF, IHC-Fr, IHC-P, IP, WB
CD66b / CEACAM8	GTX37742	CD66b / CEACAM8 antibody	Rb pAb	Hu	ELISA, WB
	★ GTX19779	CD66b antibody [80H3]	Ms mAb (IgG1)	Hu	FACS, IHC-Fr

### Selected Application References

**CD18 antibody [MEM-48] (GTX20657)**

Tran, D.Q. et al. (2009) J Immunol. 182:2929-38. (Blocking; Ms)

**CD18 antibody [YTS 213.1] (GTX74602)**

McDole, J.R. et al. (2010) Am J Pathol. 177:1823-33. (IHC; Ms)

**CD34 antibody [QBEND-10] (GTX73823)**

Pilling, D. et al. (2006) J Leukoc Biol. 79:1242-51. (IHC)

**CD34 antibody [MEC14.7] (GTX28158)**

Tchaicha, J.H. et al. (2011) Cancer Res. 71:6371-81.

Tchaicha, J.H. et al. (2010) Oncogene. 29:4460-72. (IHC; Hu, Ms)

Truman, J.P. et al. (2010) PLoS One. 5:e12310. (IHC; Ms)

Spirli, C. et al. (2010) Gastroenterology. 138:360-71. (IHC; Ms)

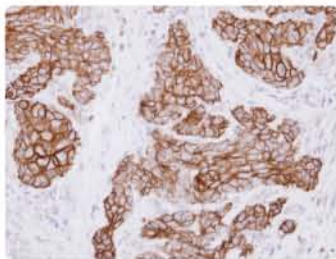
Hirahashi, J. et al. (2009) Circulation. 120:1255-65. (IHC-P; Ms)

Trempus, C.S. et al. (2003) J Invest Dermatol. 120:501-11. (ICC/IF; Ms)

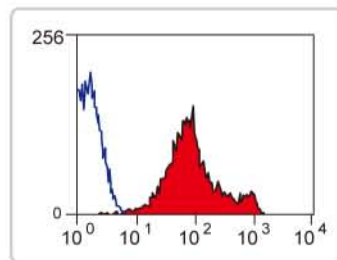
**CD66b antibody [80H3] (FITC) (GTX75907)**

Eken, C. et al. (2010) J Biol Chem. 285:39914-21. (ICC/IF)

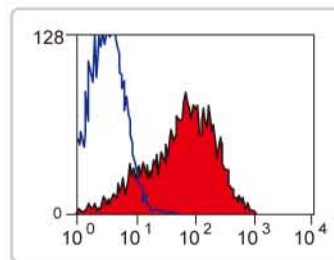
## Basophil & Eosinophil Markers



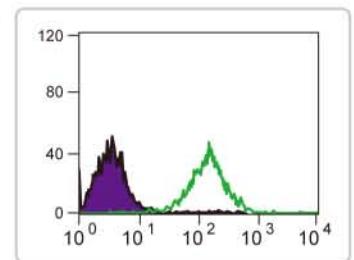
**CD44 antibody (GTX112893):**  
IHC analysis of paraffin-embedded Cal27 xenograft.



**CD44 antibody [5035-41.1D] (FITC) (GTX74573):**  
FACS analysis of mouse spleen cells (red)



**CD44 antibody [OX-50] (FITC) (GTX76381):**  
FACS analysis of rat spleen cells (red).

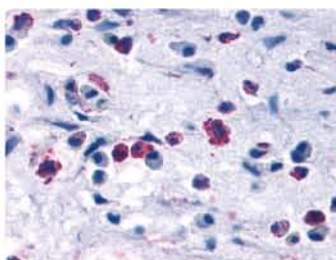


**CD69 antibody [8B6] (GTX83000):**  
FACS analysis of Jurkat cells (green).

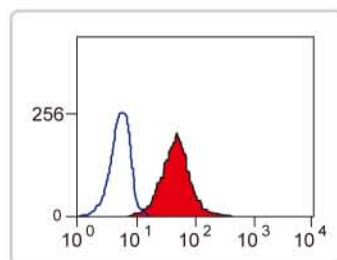
★ Conjugated antibodies available for FACS

	Cat. No.	Product name	Host & Clonality	Reactivity	Application
CD44	GTX112893	CD44 antibody	Rb pAb	Hu	IHC-P, WB
	GTX61592	CD44 antibody [EPR1013Y]	Rb mAb	Hu	FACS, ICC/IF, IHC-P, WB
	★ GTX74575	CD44 antibody [5035-41.1D]	Ms mAb (IgG1)	Ms	FACS, IP
	★ GTX29524	CD44 antibody [MEM-263]	Ms mAb (IgG1)	Hu	FACS, IP, WB
	★ GTX76383	CD44 antibody [OX-50]	Ms mAb (IgG1)	Rat	FACS, IHC-Fr
	GTX30725	CD44 antibody [F10-44-2]	Ms mAb (IgG2a)	Hu, Mk	FACS, IHC-Fr, IHC-P
	GTX20051	CD44 antibody [P2A1]	Ms mAb (IgG2a)	Hu	FACS, H, IHC-P, IP
	★ GTX22212	CD44 antibody [MEM-85]	Ms mAb (IgG2b)	Hu	ELISA, FACS, IP
	GTX74610	CD44 antibody [YKIX 337.8.7]	Rat mAb (IgG2a)	Canine	FACS, IHC-Fr
	★ GTX80086	CD44 antibody [IM7]	Rat mAb (IgG2b)	Hu, Ms, Cat, Dog, Hrs	FACS, ICC/IF, IHC-Fr, IHC-P, IP, WB
CD69	GTX37447	CD69 antibody	Rb pAb	Hu, Ms, Rat	ELISA, IHC-P, WB
	GTX83000	CD69 antibody [8B6]	Ms mAb (IgG1)	Hu	ELISA, FACS
	★ GTX80154	CD69 antibody [FN50]	Ms mAb (IgG1)	Hu	FACS, IHC-Fr, FuncS
	★ GTX75180	CD69 antibody [HI.2F3]	Hm mAb		FACS, IHC-Fr, IP

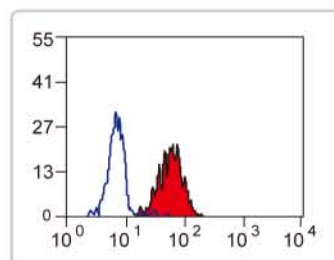
## Basophil Markers



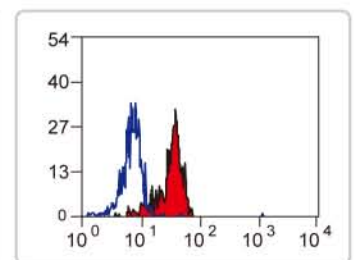
**CCR3 antibody (GTX70769):**  
IHC analysis.



**CD13 antibody [CVS19] (GTX42445):**  
FACS analysis of equine peripheral blood granulocytes (red).



**CD54 antibody [15.2] (GTX75215):**  
FACS analysis of human peripheral blood monocytes (red).



**TLR4 antibody [HTA125] (GTX75740):**  
FACS analysis of human peripheral blood monocytes (red).



★ Conjugated antibodies available for FACS

	Cat. No.	Product name	Host & Clonality	Reactivity	Application
CCR3	GTX100342	CCR3 antibody	Rb pAb	Hu	FACS, IHC-P, Neut, WB
	GTX61624	CCR3 antibody [Y31]	Rb mAb	Hu, Ms	ICC/IF, IHC-P, WB
	GTX21667	CCR3 antibody	Gt pAb	Hu	ELISA, ICC/IF, IHC-P, WB
CD13	GTX102788	CD13 antibody	Rb pAb	Hu	IHC-P, WB
	GTX62507	CD13 antibody [EPR4058]	Rb mAb	Hu, Ms, Rat	ICC/IF, IHC-M, IHC-P, IP, WB
	GTX42445	CD13 antibody [CVS19]	Ms mAb (IgG1)	Hrs	FACS, IHC-Fr
	★ GTX27417	CD13 antibody [WM15]	Ms mAb (IgG1)	Hu	ELISA, FACS, IHC-Fr, IP
	GTX40136	CD13 antibody [22A5]	Ms mAb (IgG2a)	Hu	FACS, IHC-Fr, IP
	★ GTX75927	CD13 antibody [R3-63]	Rat mAb (IgG2a)	Ms	FACS, IHC-Fr
CD54 / ICAM1	GTX61528	CD54 / ICAM1 antibody [EP1442Y]	Rb mAb	Hu	ICC/IF, IHC-P, WB
	GTX62947	CD54 / ICAM1 antibody [EPR4776]	Rb mAb	Hu	FACS, IHC-P, IP, WB
	★ GTX76497	CD54 antibody [1A29]	Ms mAb (IgG1)	Rat	FACS, IHC-Fr, IHC-P, IP, WB
	★ GTX75215	CD54 antibody [15.2]	Ms mAb (IgG1)	Hu	FACS, IHC-Fr, IP
	★ GTX22213	CD54 / ICAM1 antibody [MEM-111]	Ms mAb (IgG2a)	Hu, Cow, Rat	ELISA, FACS, IP, WB
	★ GTX78387	CD54 antibody [1H4]	Ms mAb (IgG2b)	Hu	FACS, ICC/IF, IHC-Fr, IHC-P, WB
	GTX41917	CD54 antibody [Bu74]	Ms mAb (IgM)	Hu	FACS, IHC-Fr
	★ GTX79845	CD54 antibody [YN1/1.7.4]	Rat mAb (IgG2b)	Ms	FACS, ICC/IF, IHC-Fr, IP, WB, FuncS
CD63	GTX74944	CD54 antibody [3E2B]	Hm mAb	Ms	IHC-Fr, ELISA, FACS, FuncS
	GTX37555	CD63 antibody	Rb pAb	Hu, Ms, Rat	ELISA, WB
	★ GTX41878	CD63 antibody [AD1]	Ms mAb (IgG1)	Rat	FACS, IHC-P, IP, WB
	★ GTX28219	CD63 antibody [MEM-259]	Ms mAb (IgG1)	Hu	FACS, IP, WB
CD107a / LAMP1	GTX21318	CD63 antibody [NK1/C3]	Ms mAb (IgG1)	Hu	IHC-P
	GTX62434	CD107a / LAMP1 antibody [EPR4204]	Rb mAb	Hu	IHC-P, WB
	★ GTX39405	CD107a / LAMP1 antibody [4E9/11]	Ms mAb (IgG1)	Pig	FACS, IHC-Fr, IHC-P, IP, WB
	★ GTX80229	CD107a antibody [B-T47]	Ms mAb (IgG1)	Hu	FACS, IHC
	GTX13523	CD107a / LAMP1 antibody [LY1C6]	Ms mAb (IgG1)	Hm, Rat	ICC/IF, IP, WB
CD203c	GTX42501	CD107a antibody [1D4B]	Rat mAb (IgG2a)	Ms	FACS, ICC/IF, IHC-Fr, IP
	★ GTX79907	CD203c antibody [NP4D6]	Ms mAb (IgG1)	Hu	FACS
CDw17	GTX72455	CDw17 antibody [B392 (HuLy-m13)]	Ms mAb (IgM)	Hu	FACS, ICC/IF
TLR4	GTX21436	TLR4 antibody	Rb pAb	Hu	FACS, WB
	GTX13556	TLR4 antibody	Rb pAb	Hu, Ms	FACS, ICC/IF, IHC-Fr, IHC-P, WB
	★ GTX75740	TLR4 antibody [HTA125]	Ms mAb (IgG2a)	Hu, Gpig, Pig, RMK	FACS, IP, FuncS, WB
	★ GTX29104	TLR4 antibody [MTS510]	Rat mAb (IgG2a)	Ms	FACS, IP

### Selected Application References

#### CCR3 antibody (GTX100342)

Levina, V. et al. (2009) Clin Cancer Res. 15:2647-56. (FACS, IHC, Neut, Hu)

#### CCR3 antibody (GTX70769)

Sugasawa, H. et al. (2008) Int J Cancer. 122(11):2535-41. (IHC; Hu)  
Sugasawa, H. et al. (2008) J Surg Oncol. 97(5):445-50. (IHC; Hu)

#### CD54 / ICAM1 antibody (GTX75215)

Tran, D.Q. et al. (2009) J Immunol. 182:2929-38. (Blocking; Ms)

#### CD107a / LAMP1 antibody (GTX19294)

Dehay, B. et al. (2010) J Neurosci. 30:12535-44. (IHC, WB; Ms)

#### CD107a / LAMP1 antibody [LY1C6] (GTX13523)

Tan, S.C. et al. (2011) Mol Biol Cell. 22:467-77. (ICC/IF, WB; Hu)  
Salipante, S.J. et al. (2009) Mol Cell Biol. 29:4394-405. (IHC; Rat)

#### TLR4 antibody [HTA125] (GTX75740)

Henning, L.N. et al. (2008) J Immunol. 180:7847-58. (ICC/IF; Hu)  
Tzeng, H.P. et al. (2008) Am J Physiol Heart Circ Physiol 294:H1490-6. (Blocking; Cat)

## Eosinophil Markers



★ Conjugated antibodies available for FACS

	Cat. No.	Product name	Host & Clonality	Reactivity	Application
CD9	GTX100912	CD9 antibody	Rb pAb	Hu	WB
	GTX62294	CD9 antibody [EPR2949]	Rb mAb	Hu, Ms, Rat	ICC/IF, IHC-P, IP, WB
	GTX75373	CD9 antibody [72F6]	Ms mAb (IgG1)	Hu	IHC-Fr, IHC-P
	★ GTX22215	CD9 antibody [MEM-61]	Ms mAb (IgG1)	Hu	FACS, IP, WB
	★ GTX41761	CD9 antibody [Bu16]	Ms mAb (IgG2a)	Hu	FACS, ICC/IF, IP, WB
	★ GTX76184	CD9 antibody [MM2/57]	Ms mAb (IgG2b)	Hrs, Hu, Mk, Rb	FACS, IHC-Fr, WB
	★ GTX80172	CD9 antibody [EM-04]	Rat mAb (IgG1)	Ms	FACS, ICC/IF, IP, WB
Eosinophil Major Basic Protein	GTX114664	MBP / PRG2 antibody	Rb pAb	Hu	WB
	GTX14462	MBP / PRG2 antibody [1.B.787]	Ms mAb (IgG1)	Hu	ELISA, IHC-Fr, IHC-P, WB
	GTX40448	Major Basic Protein antibody [BMK13]	Ms mAb (IgG1)		IHC-P, ELISA, WB
Eosinophil Peroxidase	GTX47120	EPX antibody	Rb pAb	Hu, Ms	WB

### Selected Application References

#### CD9 antibody [72F6] (GTX75373)

Bock, O. et al. (2009) Br J Haematol. 146:510-20. (IHC; Hu)

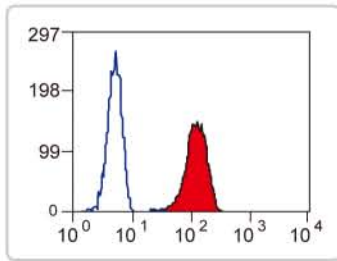
#### CD9 antibody [MEM-61] (GTX22215)

Lafleur, M.A. et al. (2009) Mol Biol Cell. 20:2030-40. (WB; Hu)

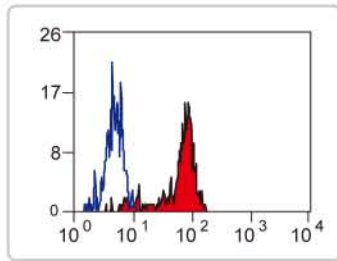
#### CD9 antibody [MM2/57] (GTX76184)

Zevian, S. et al. (2011) J Biol Chem. 286:7496-506. (WB; Hu)  
Chang, Y. et al. (2007) J Cell Sci. 120:3053-63. (Blocking; Cow)

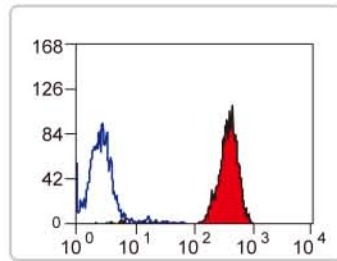
# Neutrophil Markers



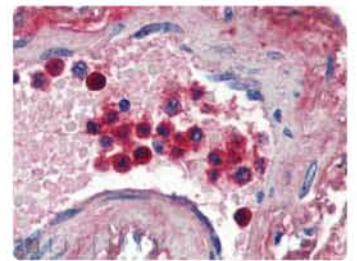
**CD62L antibody [FMC46] (GTX74629):**  
FACS analysis of human peripheral blood granulocytes (red).



**CD64 antibody [10.1] (GTX76484):**  
FACS analysis of human peripheral blood monocytes (red).



**Gr-1 antibody [RB6-8C5] (GTX43874):**  
FACS analysis of mouse peripheral blood granulocytes (red).



**Lactoferrin antibody (GTX88565):**  
IHC analysis of paraffin-embedded human blood vessel.

★ Conjugated antibodies available for FACS

	Cat. No.	Product name	Host & Clonality	Reactivity	Application
CD62L / L-Selectin	GTX81602	L-Selectin antibody	Rb pAb	Hu	ELISA, FACS, IHC, WB
	GTX59778	L-Selectin/CD62L antibody	Rb pAb	Hu, Ms, Rat	IHC, IP
	★ GTX80176	CD62L antibody [DREG56]	Ms mAb (IgG1)	Hu	FACS, IHC-Fr, IP, WB, FuncS
	★ GTX78399	CD62L antibody [LT-TD180]	Ms mAb (IgG1)	Hu	FACS
	★ GTX74988	CD62L antibody [OX-85]	Ms mAb (IgG1)	Rat	ELISA, FACS
	★ GTX74631	CD62L antibody [FMC46]	Ms mAb (IgG2b)	Hu, Mk	FACS, IHC-Fr, IP
	★ GTX74799	CD62L antibody [MEL-14]	Rat mAb (IgG2a)	Ms	FACS, IHC, IP
CD64	GTX63121	CD64 antibody [EPR4624]	Rb mAb	Hu	ICC/IF, IP, WB
	GTX63408	CD64 antibody [EPR4623]	Rb mAb	Hu	FACS, IP, WB
	★ GTX76486	CD64 antibody [10.1]	Ms mAb (IgG1)	Bb, Mk	Blocking, FACS, ICC/IF, FuncS
Ly-6G / Gr-1	GTX37497	Ly-6G antibody	Rb pAb	Ms	ICC/IF, WB
	★ GTX79897	Ly-6G antibody [RB6-8C5]	Rat mAb (IgG2b)	Ms	FACS, IHC-Fr, IHC-P, IP, WB, FuncS
Lactoferrin	GTX113488	Lactoferrin antibody	Rb pAb	Hu	IHC-P, WB
	GTX62570	Lactoferrin antibody [EPR4337]	Rb mAb	Hu	ICC/IF, IP, WB
	GTX37308	Lactoferrin antibody	Ms mAb (IgG1)	Hu	ELISA, ICC/IF, IHC-P, WB
	GTX10110	Lactoferrin antibody [2B8]	Ms mAb (IgG1)	Hu	ELISA, WB
	GTX88565	Lactoferrin antibody	Gt pAb	Hu	ELISA, IHC, WB
MPO	GTX63101	MPO / Myeloperoxidase antibody [EPR4793]	Rb mAb	Hu	FACS, ICC/IF, IHC-P, WB
	GTX29535	MPO antibody	Rb pAb	Hu, Rat	ICC/IF, IHC-Fr, IHC-P
	★ GTX75315	MPO antibody [2C7]	Ms mAb (IgG1)	Hu	ELISA, FACS, IHC-Fr, IHC-P, WB
	GTX39926	MPO / Myeloperoxidase antibody [16G6]	Ms mAb (IgG1)	Hu	ELISA, WB
	GTX10163	MPO antibody [2A11]	Ms mAb (IgG2a)	Hu	ELISA
	GTX10165	MPO antibody [4A4]	Ms mAb (IgG2b)	Hu	ELISA, WB
	GTX39924	MPO / Myeloperoxidase antibody [17G2]	Ms mAb (IgG2b)	Hu	ELISA
Neutrophil elastase	GTX113175	Neutrophil elastase antibody	Rb pAb	Hu	WB
	GTX41327	Neutrophil elastase antibody [39A]	Ms mAb (IgG1)	Hu	ELISA, FACS, IHC-P, FuncS
	GTX72042	Neutrophil elastase antibody [NP57]	Ms mAb (IgG1)	Hu	IHC-Fr, IHC-P
	GTX40800	Neutrophil elastase antibody [204]	Ms mAb (IgG2b)	Hu	IA
	GTX40290	Neutrophil elastase antibody [201]	Ms mAb (IgM)	Hu	IA, Inhib
p47phox / NCF1	GTX102957	NCF1 antibody	Rb pAb	Hu	IHC-P, WB
	GTX118361	NCF1 antibody	Rb pAb	Hu	WB
	GTX89999	NCF1 / p47phox antibody	Gt pAb	Hu, Ms, Cow, Pig, Rb, Rat	ELISA, WB
	GTX20795	NCF1 antibody	Gt pAb	Hu, Ms, Cow, Rb, Rat	WB

## Selected Application References

**CD64 antibody [10.1] (GTX76486)**  
Richards, J.O. et al. (2008) Mol Cancer Ther. 7:2517-27. (Blocking; Hu)

**MPO antibody [2C7] (GTX75315)**  
Gardet, A. et al. (2010) J Immunol. 185:5577-85. (IHC; Hu)



## International

Toll-free : 0809-098988 Tel : 886.3.6208988 Fax : 886.3.6209098  
Address : 6F-2, No.89, Dongmei Rd., East Dist., Hsinchu City 300, Taiwan (R.O.C.)  
E-mail : [info@genetex.com](mailto:info@genetex.com)

## USA

Toll-free : 1.877.GeneTex(1.877.436.3839) Fax : 1.949.309.2888  
Address : 2456 Alton Parkway, Irvine, CA 92606  
E-mail : [info@genetex.com](mailto:info@genetex.com)