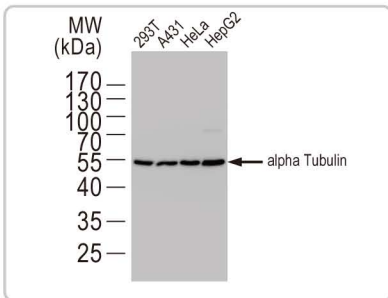


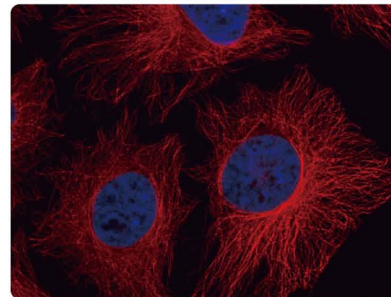
# Introducing Reliable Loading Controls

- ✓ STABLE MONOCLONAL ANTIBODY
- ✓ VALIDATION IN MULTIPLE SPECIES INCLUDING ZEBRAFISH & DROSOPHILA
- ✓ SUITABLE FOR VARIOUS APPLICATIONS
- ✓ ABUNDANT SUPPORTING CITATIONS

## $\alpha$ -Tubulin antibody [GT114] (GTX628802)



WB analysis of  $\alpha$ -Tubulin protein in multiple cell lines.

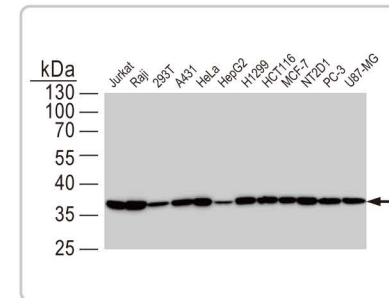


Immunostaining using  $\alpha$ -Tubulin antibody [GT114] in HeLa cells.

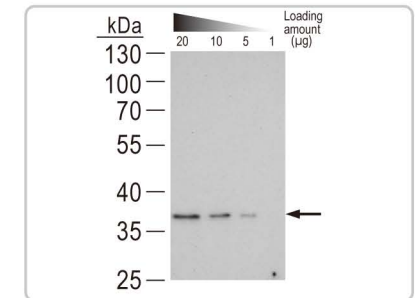
### Product Information

|                     |  |
|---------------------|--|
| Catalog Number:     | GTX628802  |
| Clonality:          | Mouse Monoclonal   |
| Applications:       | ICC/IF, IHC-P, WB  |
| Species reactivity: | Human, Mouse, Drosophila, Rat, Zebrafish   |
| Selected Citations: | <b>Mol Cancer.</b> 2014 Jul 15;13:172.<br><b>PLoS One.</b> 2014 Jul 7;9(7):e101980.<br><b>J Virol.</b> 2014 Mar;88(5):2530-43. |

## GAPDH antibody [GT239] (GTX627408)



WB analysis of GAPDH protein in multiple cell lines.



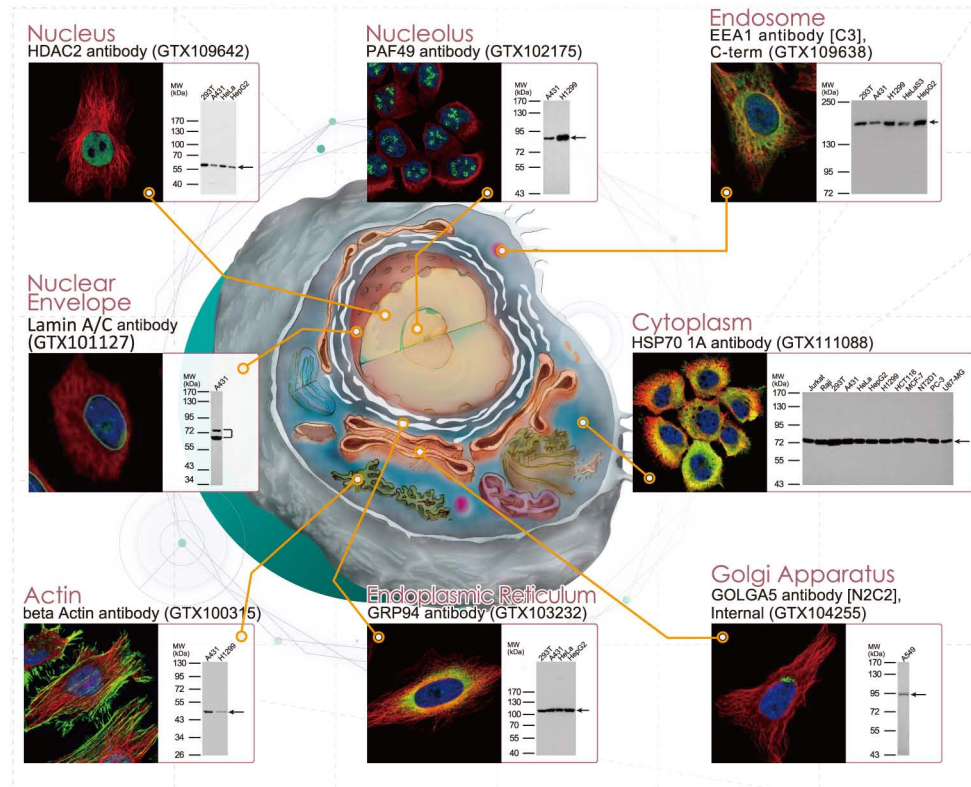
WB analysis of GAPDH protein in different amount of protein extracts from 293T cells.

### Product Information

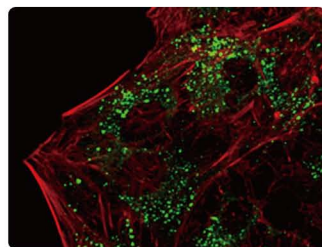
|                     |   |
|---------------------|---|
| Catalog Number:     | GTX627408   |
| Clonality:          | Mouse Monoclonal  |
| Applications:       | ICC/IF, IHC-P, WB   |
| Species reactivity: | Human, Mouse, Drosophila, Rat, Zebrafish, Yeast   |
| Selected Citations: | <b>Nat Genet.</b> 2014 Jun;46(6):595-600.<br><b>PLoS One.</b> 2014 Apr 9;9(4):e93597.<br><b>Cancer Res.</b> 2014 May 15;74(10):2677-87. |

# Essential Organelle Markers

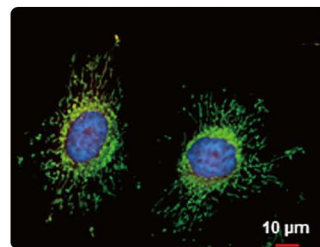
Choose a selection of organelle marker antibodies from GeneTex for your essential work!



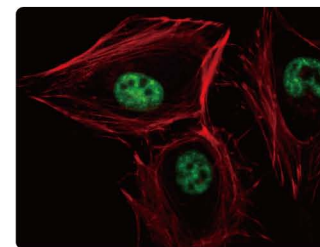
| Organelle                     | Cat. No.                    | Product name                     | Reactivity   | Application                       |
|-------------------------------|-----------------------------|----------------------------------|--|-----------------------------------|
| Actin                         | GTX109639                   | beta Actin antibody              | Hu, Ms, Dm, Rat, Yeast, Rice, C. albicans                                | ICC/IF, IHC-P, WB                 |
|                               | GTX100315                   | beta Actin antibody              | Hu   | ICC/IF, IHC-P, WB                 |
|                               | GTX100118                   | GAPDH antibody                   | Hu, Ms, Dm, Rat  | ICC/IF, IHC-P, WB                 |
| Cytoplasm                     | GTX111088                   | HSP70 1A antibody                | Hu, Ms   | ICC/IF, IHC-P, IP, WB             |
|                               | GTX26528                    | pan Cadherin antibody [CH-19]    | Hu, Ms, Chk, Cow, Dog, Pig, Rat, Cat, Goat, Gpig, Hm, Rb, SRat, Shp, Snk | ICC/IF, IHC-P, WB                 |
| ER                            | GTX103232                   | GRP94 antibody                   | Hu, Ms   | ICC/IF, IHC-P, WB                 |
|                               | GTX109669                   | Calnexin antibody [C3], C-term   | Hu, Ms   | ICC/IF, IHC-P, IP, WB             |
| Golgi                         | GTX116154                   | GOLPH2 antibody                  | Hu   | ICC/IF, IHC-P, WB                 |
|                               | GTX104255                   | GOLGA5 antibody [N2C2], Internal | Hu, Ms   | ICC/IF, IHC-P, WB                 |
| Junction (Tight Junction)     | GTX108613                   | ZO-1 antibody [N1N2], N-term     | Hu   | ICC/IF, IHC-P, WB                 |
|                               | GTX108592                   | ZO-1 antibody                    | Hu, Ms   | IHC-P, WB                         |
| Junction (Gap Junction)       | GTX50571                    | Connexin 43 antibody             | Hu, Ms, Rat  | IHC, IHC-P, WB                    |
| Centromere                    | GTX113286                   | gamma Tubulin antibody           | Hu, Ms, Rat, Zfsh  | ICC/IF, IHC, IHC-F, IHC-P, WB     |
| Kinetochores (M phase)        | GTX107155                   | ZWINT antibody                   | Hu   | ICC/IF, WB                        |
|                               | GTX70268                    | HEC1 antibody [9G3.23]           | Hu, Ms, Pig, Hm, AGMK  | FACS, ICC/IF, IHC, IP, WB, WB-Ag  |
| Lysosome                      | GTX103214                   | LAMP2 antibody                   | Hu   | ICC/IF, IHC-P, WB                 |
|                               | GTX110237                   | GALNS antibody                   | Hu, Ms, Rat  | ICC/IF, IHC-P, WB                 |
| Endosome                      | GTX109638                   | EEA1 antibody [C3], C-term       | Hu, Ms, Rat  | ICC/IF, IHC-P, WB                 |
| Autophagosome                 | GTX118992                   | LC3 antibody                     | Ms, Rat  | WB                                |
| Microtubules/Spindle          | GTX48634                    | LC3 antibody                     | Hu, Ms, Cow, Rat, Zfsh   | FACS, IHC, WB                     |
|                               | GTX102078                   | alpha Tubulin antibody           | Hu, Ms, Rat  | ICC/IF, IHC-P, WB                 |
| Mitochondria (Inner Membrane) | GTX101499                   | COX4 antibody                    | Hu   | ICC/IF, IHC-P, WB                 |
|                               | GTX114330                   | COX4 antibody                    | Hu, Ms, Rat  | ICC/IF, IHC-P, WB                 |
|                               | GTX101105                   | Prohibitin antibody              | Hu, Ms, Rat  | ICC/IF, IHC-P, WB                 |
| Mitochondria (Outer Membrane) | GTX104745                   | VDAC2 antibody [C2C3], C-term    | Hu, Ms   | ELISA, ICC/IF, IHC-P, IP, WB      |
| Nuclear Envelope              | GTX101127                   | Lamin A/C antibody               | Hu, Ms, Rat  | ICC/IF, IHC-P, IP, WB             |
|                               | GTX102128                   | POM121 antibody [N2N3]           | Hu, Ms   | ICC/IF, IHC-P, WB                 |
| Nucleolus                     | GTX102175                   | PAF49 antibody                   | Hu   | ICC/IF, IHC-P, WB                 |
|                               | GTX108749                   | RPA70 antibody [C1C3]            | Hu, Ms   | ICC/IF, IHC-P, WB                 |
| Nucleus                       | GTX100539                   | PCNA antibody                    | Hu, Ms, Rat  | ICC/IF, IHC, IHC-P, WB            |
|                               | GTX100513                   | HDAC1 antibody                   | Hu, Ms   | ICC/IF, IHC-P, IP, WB, ChIP assay |
|                               | GTX109642                   | HDAC2 antibody                   | Hu, Ms, Rat  | ICC/IF, IHC-P, IP, WB, ChIP assay |
| Internal Controls             | GTX627408                   | GAPDH antibody [GT239]           | Hu, Ms, Dm, Rat, Zfsh, Yeast   | ICC/IF, IHC-P, WB                 |
|                               | GTX628802                   | alpha Tubulin antibody [GT114]   | Hu, Ms, Dm, Rat, Zfsh  | ICC/IF, IHC-P, WB                 |
|                               | GTX109832                   | alpha Tubulin 1A antibody        | Hu, Ms, Dm, Rat  | ICC/IF, IHC-P, WB                 |
|                               | GTX110564                   | beta Actin antibody              | Hu, Ms, Dm, Rat  | ICC/IF, IHC-P, WB                 |
|                               | GTX629630                   | beta Actin antibody [GT5512]     | Hu, Ms, Dm, Rat, Zfsh, Yeast, Goat, Rb                                   | ICC/IF, WB                        |
|                               | GTX101279                   | beta Tubulin antibody            | Hu, Ms, Rat  | ICC/IF, IHC-P, WB                 |
|                               | GTX127271                   | Cre antibody                     | Other  | IP, WB                            |
| GTX125848                     | Firefly Luciferase antibody | Firef                            | WB   |                                   |
| GTX125851                     | Renilla Luciferase antibody | INVT                             | WB   |                                   |



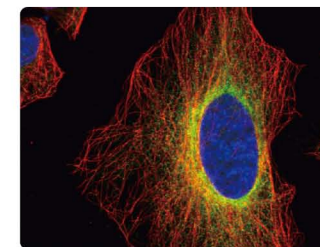
**SQSTM1 antibody [GT1478]**  
(GTX629890)



**FIS1 antibody [GT9810]**  
(GTX631209)



**p84 antibody [5E10]**  
(GTX70220)



**ERp57 antibody**  
(GTX113719)

