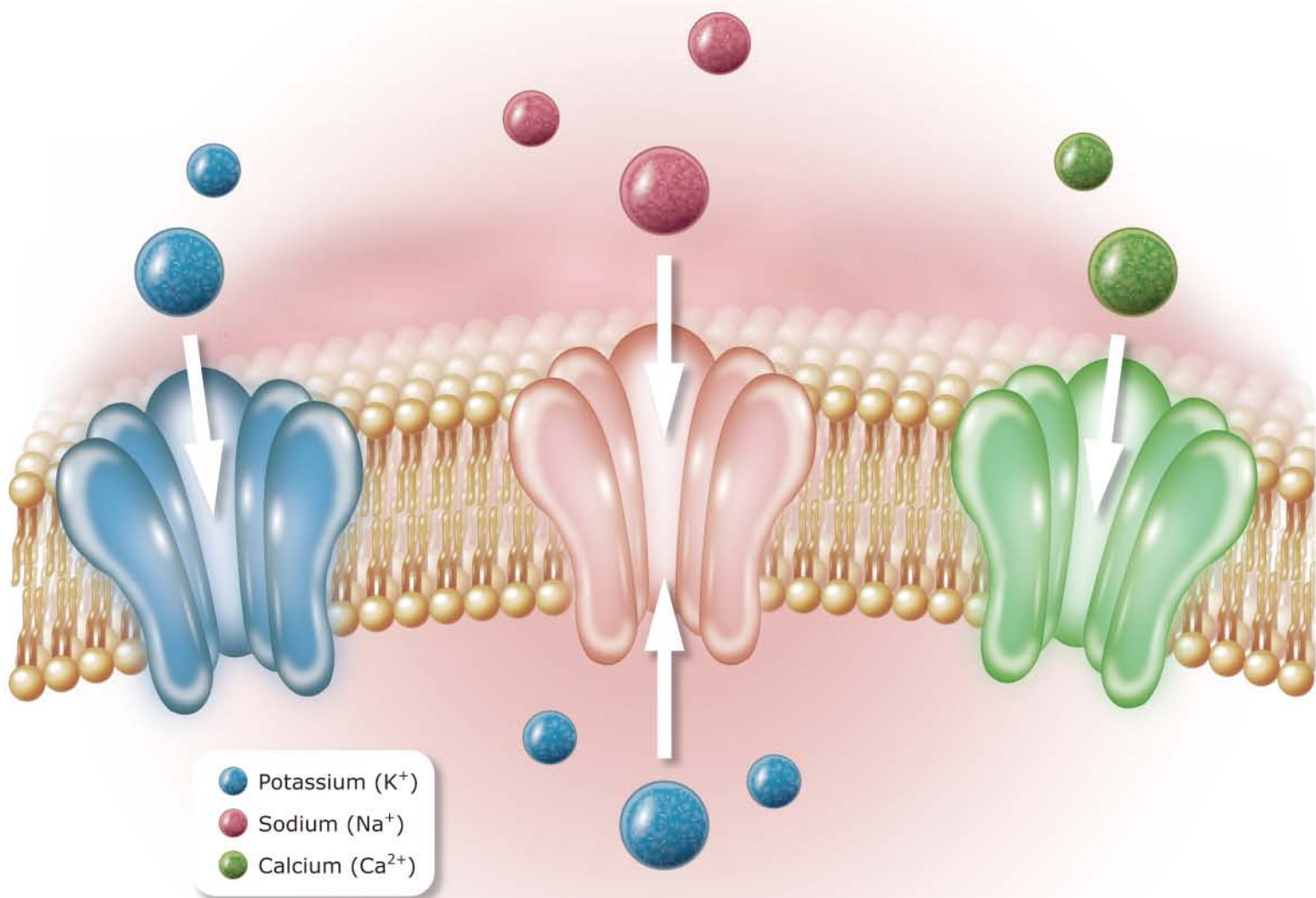


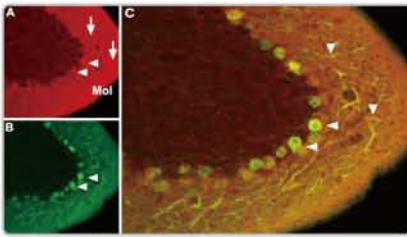
Ion Channels



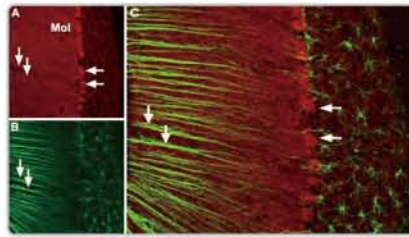
Ion channels are pore-forming, usually multimeric plasma membrane proteins that can open and close in response to chemical, temperature, or mechanical signals. An open channel allows specific ions to rapidly traverse the transmembrane passageway along an electrochemical gradient, generating an electrical signal that is propagated along excitable cells. Ion channels are of immense importance in clinical medicine as they are linked to a broad array of disorders and are targets of an ever-expanding, and commonly prescribed, armamentarium of pharmacologic agents. Nevertheless, there remains a great void in our understanding of ion channel biology, which limits our ability to develop more effective and more specific drugs.

GeneTex offers an outstanding selection of antibodies to support ion channel research. Please see the highlighted antibodies on the next page or review our complete list of related products on the GeneTex website.

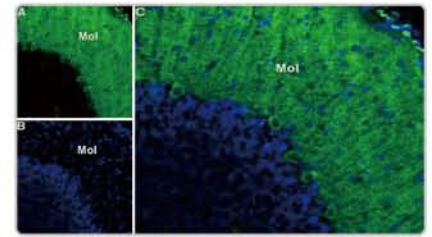




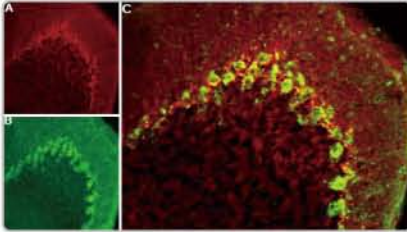
Cav1.2 antibody (GTX54754)
IHC analysis of Cav1.2 (red) and Calbindin 28K (green) expression in mouse cerebellum.



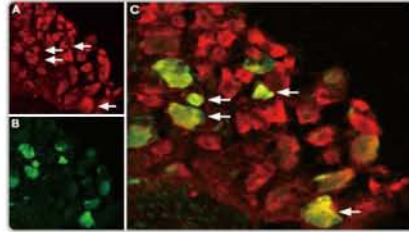
Cav2.1 antibody (GTX54753)
IHC analysis of Cav2.1 (red) and GFAP (green) expression in mouse cerebellum.



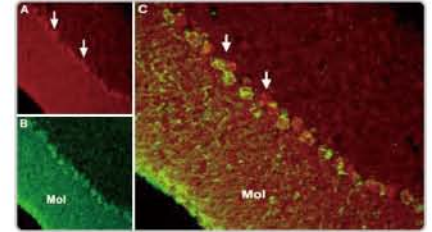
Cav3.1 antibody (GTX54760)
IHC analysis of Cav3.1 expression (green) and DAPI (blue) in rat cerebellum.



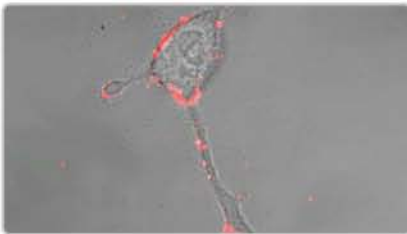
Cav3.2 antibody (GTX54813)
IHC analysis of Cav3.2 expression (red) and parvalbumin staining (green) in mouse cerebellum.



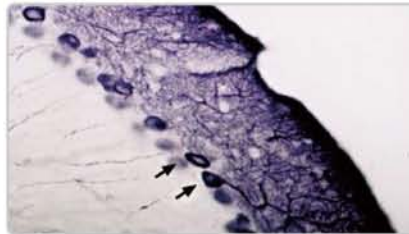
TRPV1 antibody (GTX54762)
IHC analysis of TRPV1 expression (red) and parvalbumin staining (green) in rat dorsal root ganglion.



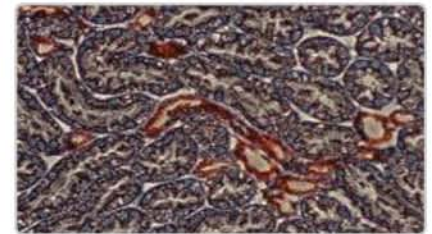
TRPC6 antibody (GTX54757)
IHC analysis of TRPC6 expression (red) and parvalbumin staining (green) in mouse cerebellum.



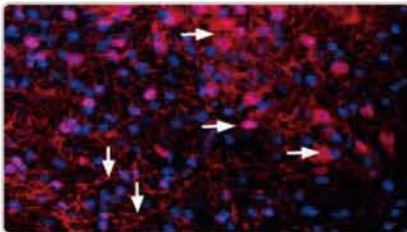
TRPA1 antibody (GTX54765)
ICC/IF analysis of TRPA1 protein in rat PC12 cells.



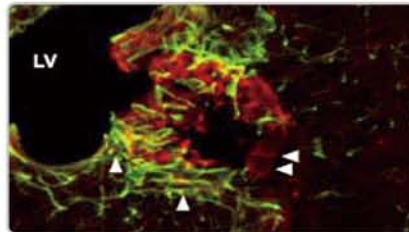
IP3 Receptor 1 antibody (GTX54759)
IHC analysis of IP3 Receptor 1 expression in mouse cerebellum.



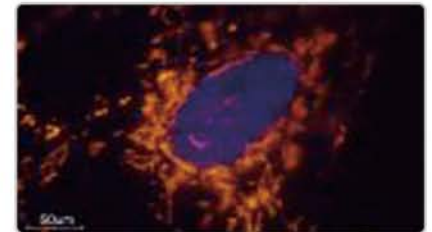
Kir1.1 / ROMK antibody (GTX54775)
IHC analysis of Kir1.1 expression in rat kidney tissue.



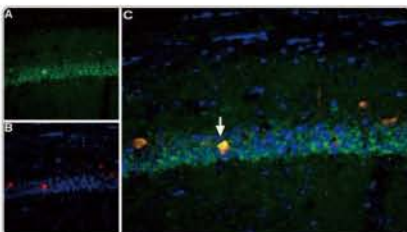
Kir3.2 / GIRK2 antibody (GTX54832)
IHC-Fr analysis of Kir3.2 expression in mouse brain.



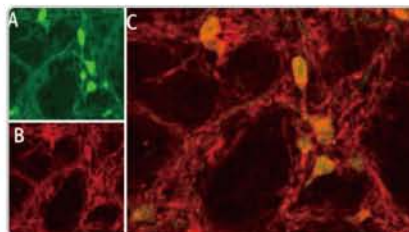
CNGA2 antibody (GTX54816)
IHC analysis of CNGA2 (red) and GFAP (green) expression in mouse cerebellum.



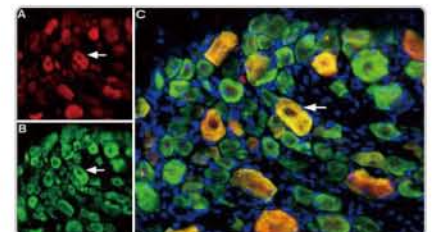
Nav1.1 antibody (GTX54841)
ICC/IF analysis of Nav1.1 expression in rat DRG cells.



Nav1.6 antibody (GTX54842)
IHC analysis of Nav1.6 expression (green), parvalbumin staining (red) and DAPI (blue) in mouse hippocampus.



ASIC1 antibody (GTX54804)
IHC analysis of ASIC1 expression (red) and parvalbumin staining (green) in rat brain.



ASIC3 antibody (GTX54807)
IHC-Fr analysis of ASIC3 (red) and ASIC1 (green) expression with DAPI (blue) in rat dorsal root ganglia.

Quality Antibodies • Quality Results

List of Representative Products

Class	Product Name	Clonality	Reactivity	Application	Cat. No.
Calcium Channels	Cav alpha 2/delta 2 antibody	Rb pAb	Hu, Ms, Rat	IHC, WB	GTX54770
	Cav beta 2 antibody	Rb pAb	Ms, Rat	WB	GTX54771
	Cav1.2 antibody	Rb pAb	Hu, Ms, Rat	FACS, ICC/IF, IHC, IP, WB	GTX54754
	Cav1.3 antibody	Rb pAb	Hu, Ms, Rat	ICC/IF, IHC, IP, WB	GTX54755
	Cav2.1 antibody	Rb pAb	Hu, Ms, Rat	ICC/IF, IHC, WB	GTX54753
	Cav2.2 antibody	Rb pAb	Hu, Ms, Rat	ICC/IF, IHC, IP, WB	GTX54812
	Cav2.3 antibody	Rb pAb	Hu, Ms, Rat	ICC/IF, IHC, WB	GTX54756
	Cav3.1 antibody	Rb pAb	Hu, Ms, Rat	ICC/IF, IHC, WB	GTX54760
	Cav3.2 antibody	Rb pAb	Hu, Ms, Rat	ICC/IF, IHC, IHC-Fr, IP, WB	GTX54813
	IP3 Receptor 1 antibody	Rb pAb	Hu, Ms, Rat	ICC/IF, IHC, IP, WB	GTX54759
	IP3 Receptor 2 antibody	Rb pAb	Rat	IHC, WB	GTX54772
	Orai1 antibody	Rb pAb	Hu	FACS, WB	GTX54826
	ORAI2 antibody	Rb pAb	Hu, Rat	IHC, IHC-P, WB	GTX54767
	ORAI3 antibody	Rb pAb	Ms, Rat	WB	GTX54769
	STIM2 antibody	Rb pAb	Hu, Ms, Rat	ICC/IF, IHC, IHC-P, WB	GTX54768
	TRPA1 antibody	Rb pAb	Hu, Ms, Rat	ICC/IF, IHC, IP, WB	GTX54765
	TRPC1 antibody	Rb pAb	Hu, Ms, Rat	ICC/IF, WB	GTX54876
	TRPC2 antibody	Rb pAb	Ms, Rat	WB	GTX54761
	TRPC3 antibody	Rb pAb	Hu, Ms, Rat	FACS, ICC/IF, IHC, IHC-Fr, IHC-P, IP, WB	GTX54860
	TRPC4 antibody	Rb pAb	Hu, Ms, Rat	ICC/IF, IHC, IHC-Fr, IP, WB	GTX54758
	TRPC6 antibody	Rb pAb	Hu, Ms, Rat	FACS, ICC/IF, IHC, IP, WB	GTX54757
	TRPM2 antibody	Rb pAb	Hu, Ms, Rat	IHC, IHC-P, WB	GTX54862
	TRPM7 antibody	Rb pAb	Hu, Ms, Rat	ICC/IF, IHC, IHC-P, WB	GTX54865
	TRPM8 antibody	Rb pAb	Hu, Ms, Rat	ICC/IF, IHC, IHC-Fr, IP, WB	GTX54866
	TRPV1 antibody	Rb pAb	Hu, Ms, Rat	ICC/IF, IHC, WB	GTX54762
	TRPV2 antibody	Rb pAb	Ms, Rat	FACS, ICC/IF, IHC, IP, WB	GTX54766
	TRPV3 antibody	Rb pAb	Hu, Ms, Rat	ICC/IF, IHC, WB	GTX54763
	TRPV4 antibody	Rb pAb	Hu, Ms, Rat	FACS, ICC/IF, IHC, IHC-Fr, IP, WB	GTX54764
Potassium Channels	CNGA1 antibody	Rb pAb	Rat	WB	GTX54787
	CNGA2 antibody	Rb pAb	Ms, Rat	ICC/IF, IHC, WB	GTX54816
	CNGA3 antibody	Rb pAb	Rat	IHC, IHC-Fr, WB	GTX54784
	DPP6 antibody	Rb pAb	Hu, Ms, Rat	IHC, IHC-Fr, WB	GTX54792
	HCN1 antibody	Rb pAb	Hu, Ms, Rat	ICC/IF, IHC, WB	GTX54823
	HCN2 antibody	Rb pAb	Hu, Ms, Rat	ICC/IF, IHC, IHC-Fr, IP, WB	GTX54824
	HCN4 antibody	Rb pAb	Hu, Ms, Rat	ICC/IF, IHC, IP, WB	GTX54825
	K2P3.1 / TASK1 antibody	Rb pAb	Hu, Rat	IHC, IP, WB	GTX54778
	KCa2.3 / KCNN3 antibody	Rb pAb	Hu, Ms, Rat	ICC/IF, IHC, WB	GTX54779
	KCa3.1 / KCNN4 antibody	Rb pAb	Hu, Ms, Rat	ICC/IF, IHC, IP, WB	GTX54786
	KCNE1 antibody	Rb pAb	Ms, Rat	FACS, ICC/IF, IHC, IP, WB	GTX54811
	KCNE2 / MiRP1 antibody	Rb pAb	Hu, Ms, Rat	ICC/IF, IHC, IHC-Fr, IP, WB	GTX54783
	Kir1.1 / ROMK antibody	Rb pAb	Hu, Ms, Rat	ICC/IF, IHC, IP, WB	GTX54775
	Kir2.1 antibody	Rb pAb	Hu, Ms, Rat	FACS, ICC/IF, IHC, IP, WB	GTX54830
	Kir3.1 / GIRK1 antibody	Rb pAb	Hu, Ms, Rat	ICC/IF, IHC, IP, WB	GTX54831
	Kir3.2 / GIRK2 antibody	Rb pAb	Hu, Ms, Rat	ICC/IF, IHC, IHC-Fr, IP, WB	GTX54832
	Kir3.4 antibody	Rb pAb	Hu, Ms, Rat	ICC/IF, IHC, WB	GTX54780
	Kir4.1 antibody	Rb pAb	Hu, Ms, Rat	ICC/IF, IHC, IP, WB	GTX54781
	Kir5.1 antibody	Rb pAb	Hu, Ms, Rat	IHC, IHC-P, WB	GTX54791
	Kir6.2 antibody	Rb pAb	Hu, Ms, Rat	ICC/IF, IHC, IP, WB	GTX54777
	Kv1.1 antibody	Rb pAb	Hu, Ms, Rat	ICC/IF, WB	GTX54875
	Kv1.5 antibody	Rb pAb	Hu, Ms, Rat	ICC/IF, IHC, IP, WB	GTX54837
	Kv10.1 / KCNH1 antibody	Rb pAb	Hu, Ms, Rat	ICC/IF, IHC, WB	GTX54788
	Kv11.1 antibody	Rb pAb	Hu, Ms, Rat	ICC/IF, IHC, IP, WB	GTX54776
	Kv11.1 antibody	Rb pAb	Hu, Ms, Rat	ICC/IF, IHC, IP, WB	GTX54785
	Kv11.1 antibody	Rb pAb	Hu, Rat	FACS, ICC/IF, IHC, IP, WB	GTX54789
	Kv12.3 antibody	Rb pAb	Hu, Rat	IHC, IHC-P, WB	GTX54790

List of Representative Products

Class	Product Name	Clonality	Reactivity	Application	Cat. No.
Potassium Channels	Kv7.1 / KCNQ1 antibody	Rb pAb	Hu, Ms, Rat	ICC/IF, IHC, IP, WB	GTX54839
	Kv7.2 / KCNQ2 antibody	Rb pAb	Hu, Ms, Rat	ICC/IF, IHC, WB	GTX54840
	Kv7.3 / KCNQ3 antibody	Rb pAb	Ms, Rat	ICC/IF, IHC, IP, WB	GTX54782
	Kv7.5 / KCNQ5 antibody	Rb pAb	Hu, Ms, Rat	IHC, IHC-Fr, WB	GTX54793
	Maxi Potassium channel alpha antibody	Rb pAb	Hu, Ms, Rat	ICC/IF, IHC, IP, WB	GTX54874
Sodium Channels	ASIC1 antibody	Rb pAb	Hu, Ms, Rat	ICC/IF, IHC, IP, WB	GTX54804
	ASIC2a antibody	Rb pAb	Hu, Ms, Rat	ICC/IF, IHC, IP, WB	GTX54802
	ASIC3 antibody	Rb pAb	Hu, Ms, Rat	ICC/IF, IHC, IHC-Fr, WB	GTX54807
	ENaC alpha antibody	Rb pAb	Hu, Ms, Rat	WB	GTX54809
	ENaC gamma antibody	Rb pAb	Rat	IHC, WB	GTX54801
	NALCN antibody	Rb pAb	Hu, Ms, Rat	ICC/IF, IHC, WB	GTX54808
	Nav beta 2 antibody	Rb pAb	Hu, Ms, Rat	IHC, WB	GTX54799
	Nav beta 4 antibody	Rb pAb	Hu, Ms, Rat	ICC/IF, IHC, WB	GTX54810
	Nav1.1 antibody	Rb pAb	Hu, Ms, Rat	ICC/IF, IHC, IP, WB	GTX54841
	Nav1.2 antibody	Rb pAb	Hu, Ms, Rat	ICC/IF, IHC, IP, WB	GTX54797
	Nav1.5 antibody	Rb pAb	Hu, Ms, Rat	ICC/IF, IHC, IHC-P, IP, WB	GTX54798
	Nav1.5 antibody	Rb pAb	Hu, Rat	FACS, ICC/IF, IHC, IHC-P, WB	GTX54803
	Nav1.6 antibody	Rb pAb	Hu, Ms, Rat	ICC/IF, IHC, WB	GTX54842
	Nav1.7 antibody	Rb pAb	Hu, Ms, Rat	ICC/IF, IHC, WB	GTX54800
	Nav1.8 antibody	Rb pAb	Hu, Rat	ICC/IF, IHC, IP, WB	GTX54805
	Nav1.9 antibody	Rb pAb	Hu, Rat	ICC/IF, IHC, IHC-Fr, WB	GTX54806
CLC Channels	CFTR antibody	Rb pAb	Hu, Rat	IHC, WB	GTX54774
	CLCN1 antibody	Rb pAb	Rat	WB	GTX54773
	CLCN2 antibody	Rb pAb	Ms, Rat	IHC, WB	GTX54814
	CLCN3 antibody	Rb pAb	Hu, Rat	ICC/IF, IHC, IP, WB	GTX54815
Transporters	Ferroportin antibody	Rb pAb	Hu, Ms, Rat	WB	GTX54821
	vGluT1 antibody	Rb pAb	Hu, Ms, Rat	WB	GTX54870
	vGluT2 antibody	Rb pAb	Hu, Ms, Rat	IHC, IHC-Fr, WB	GTX54871
	vGluT3 antibody	Rb pAb	Ms, Rat	IHC, IHC-Fr, WB	GTX54872
GPCRs	Frizzled 2 antibody	Rb pAb	Hu, Rat	WB	GTX54822
	Orexin Receptor 1 antibody	Rb pAb	Hu, Ms, Rat	ICC/IF, IHC, IHC-Fr, IHC-P, WB	GTX54847
	Orexin Receptor 2 antibody	Rb pAb	Hu, Ms, Rat	ICC/IF, IHC, WB	GTX54848
P2XY Receptors	P2X7 antibody	Rb pAb	Hu, Ms, Rat	ICC/IF, IHC, IHC-P, IP, WB	GTX54794
	P2Y1 antibody	Rb pAb	Hu, Ms, Rat	FACS, ICC/IF, IHC, IP, WB	GTX54795
	P2Y12 antibody	Rb pAb	Hu, Ms, Rat	FACS, ICC/IF, IHC, WB	GTX54796
Catalytic Receptors	TrkA antibody	Rb pAb	Hu, Ms, Rat	FACS, ICC/IF, IHC, IHC-Fr, WB	GTX54856
	TrkB antibody	Rb pAb	Hu, Ms, Rat	FACS, ICC/IF, IHC, IHC-Fr, WB	GTX54857
	TrkC antibody	Rb pAb	Hu, Ms, Rat	ICC/IF, IHC, IHC-Fr, WB	GTX54858



International

Tel 886.3.6208988
 Fax 886.3.6209098
 Address 6F-2, No.89, Dongmei Rd., Hsinchu 300, Taiwan (R.O.C.)
 E-mail international@genetex.com

USA

Toll-free 1.877.GeneTex(1.877.436.3839)
 Fax 1.949.309.2888
 Address 2456 Alton Parkway, Irvine, CA 92606 USA
 E-mail info@genetex.com

