

Japanese Encephalitis Virus Antibodies

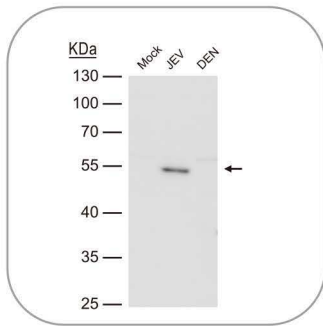


Japanese encephalitis is an infection disease caused by Japanese encephalitis virus (JEV), which belongs to the family *Flaviviridae* and is maintained in a zoonotic cycle involving *Culex* species of mosquitoes and vertebrate hosts. Disease transmission to humans may cause severe symptoms and is prevalent in Southeast Asia and East Asia. JEV is an enveloped virus and possesses a positive sense single-stranded RNA genome that is packaged in the capsid. The genome contains a single open-reading frame that encodes for a polyprotein, which is further cleaved into three structural (C, prM, E) and seven non-structural proteins (NS1, NS2A, NS2B, NS3, NS4A, NS4B, NS5).

GeneTex offers an outstanding selection of antibodies that cover a wide spectrum of JEV research.

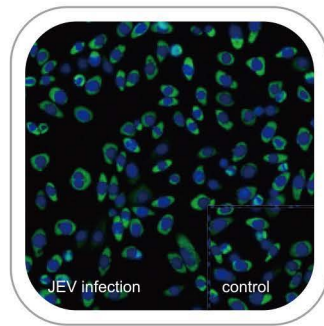
To explore the entire catalog of JEV antibodies please visit our website at www.genetex.com/JEV





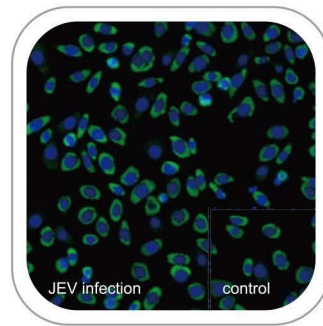
Envelope protein antibody (JEV) (GTX125867)

WB analysis of E protein in BHK-21 cells infected with indicated virus.



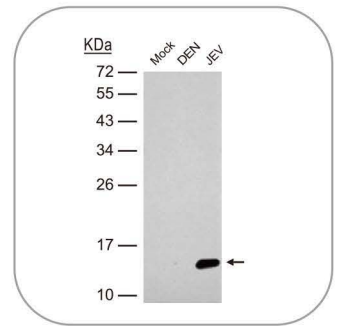
Envelope protein antibody (JEV) (GTX125867)

ICC/IF analysis of E protein in BHK-21 cells infected w/wo JEV.



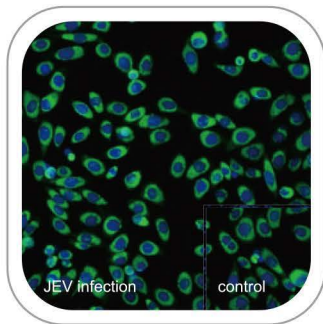
NS1 (JEV) antibody (GTX125866)

ICC/IF analysis of NS1 protein in BHK-21 cells infected w/wo JEV.



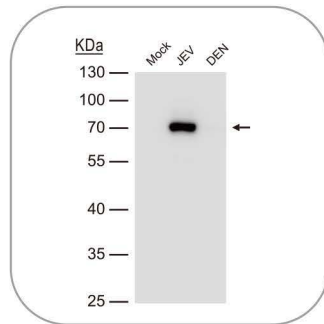
NS2B (JEV) antibody (GTX125972)

WB analysis of NS2B protein in BHK-21 cells infected with indicated virus.



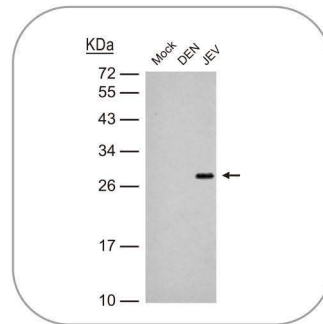
NS3 (JEV) antibody (GTX125868)

ICC/IF analysis of NS3 protein in BHK-21 cells infected w/wo JEV.



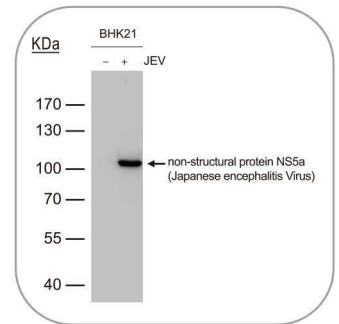
NS3 (JEV) antibody (GTX125868)

WB analysis of NS3 protein in BHK-21 cells infected with indicated virus.



NS4B (JEV) antibody (GTX125865)

WB analysis of NS4B (JEV) protein in BHK-21 cells infected with indicated virus.



NS5A (JEV) antibody (GTX131359)

WB analysis of NS3 protein in BHK-21 cells infected w/wo JEV.

Cat. No.	Product	Host	Reactivity	Application
GTX131368	Core protein C (JEV) antibody	Rb pAb	JEV	WB
GTX131833	PrM (JEV) antibody	Rb pAb	JEV	WB
GTX125867	envelope protein (JEV) antibody	Rb pAb	JEV	ICC/IF, IHC-P, WB
GTX125866	NS1 (JEV) antibody	Rb pAb	JEV	ICC/IF, WB
GTX125972	NS2B (JEV) antibody	Rb pAb	JEV	ICC/IF, WB
GTX125868	NS3 (JEV) antibody	Rb pAb	JEV	ICC/IF, WB
GTX132029	NS4A (JEV) antibody	Rb pAb	JEV	WB
GTX125865	NS4B (JEV) antibody	Rb pAb	JEV	ICC/IF, WB
GTX131359	NS5A (JEV) antibody	Rb pAb	JEV	WB
GTX131360	NS5A (JEV) antibody	Rb pAb	JEV	WB



www.genetex.com

International

Tel 886.3.6208988
 Fax 886.3.6209098
 Address 6F-2, No.89, Dongmei Rd., Hsinchu 300, Taiwan (R.O.C.)
 E-mail international@genetex.com

USA

Toll-free 1.877.GeneTex(1.877.436.3839)
 Fax 1.949.309.2888
 Address 2456 Alton Parkway, Irvine, CA 92606 USA
 E-mail info@genetex.com



www.genetex.com