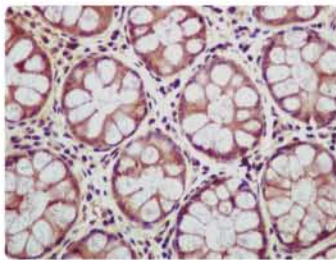
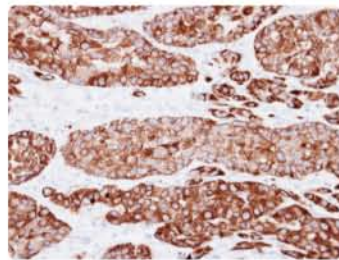


# Lung Cancer Markers

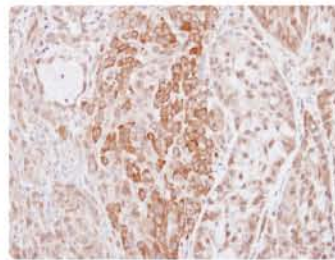
## Pathological markers



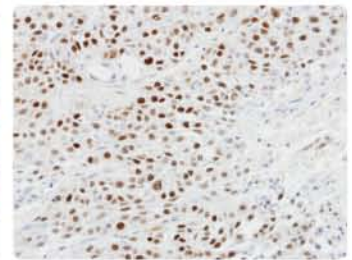
**CD66c / CEACAM6 antibody [EPR4403] (GTX62668):**  
IHC analysis of paraffin-embedded human colon tissue.



**Cytokeratin 7 antibody (GTX109723):**  
IHC analysis of paraffin-embedded A549 xenograft.



**HMWK / Kininogen 1 antibody (GTX100833):**  
IHC analysis of paraffin-embedded A549 xenograft.



**p63 antibody (GTX102425):**  
IHC analysis of paraffin-embedded SCC4 xenograft.

	<i>Cat. No.</i>	<i>Product name</i>	<i>Host &amp; Clonality</i>	<i>Reactivity</i>	<i>Application</i>
CD56 / NCAM	GTX62009	CD56 antibody [EP2567Y]	Rb mAb	Hu	FACS, ICC/IF, IHC-P, IP, WB
	GTX41911	CD56 antibody [123C3]	Ms mAb	Hu	ELISA, FACS, IHC-Fr, IHC-P
	GTX72198	CD56 antibody [B488 (123-C3)]	Ms mAb	Hu	ELISA, FACS, IHC-Fr, IHC-P
	GTX19782	CD56 antibody [H28-123]	Rat mAb	Ms	Apuri, IHC-F, IHC-Fr, IM, WB
CD66c / CEACAM6	GTX112678	CD66c antibody	Rb pAb	Hu	IHC-P, WB
	GTX112679	CD66c antibody	Rb pAb	Hu	IHC-P, WB
	GTX62668	CD66c / CEACAM6 antibody [EPR4403]	Rb mAb	Hu, Ms, Rat	ICC/IF, IHC-P, IP, WB
CD141	GTX62463	CD141 antibody [EPR4051]	Rb mAb	Hu	ICC/IF, IHC-P, IP, WB
	GTX76378	CD141 antibody [QBEND-40]	Ms mAb	Hu, Rb	FACS, IHC-Fr, IHC-P
CK5	GTX61583	Cytokeratin 5 antibody [EP1601Y]	Rb mAb	Hu	ICC/IF, IHC-M, IHC-P, IP, WB
	GTX83080	Cytokeratin 5 antibody [3E2F1]	Ms mAb	Hu	ELISA, IHC
	GTX17130	Cytokeratin 5 antibody [XM26]	Ms mAb	Hu	IHC-P
CK5+CK6	GTX17133	Cytokeratin 5 + 6 antibody [D5/16 B4]	Ms mAb	Hu	IHC-P
CK7	GTX109723	Cytokeratin 7 antibody	Rb pAb	Hu	ICC/IF, IHC-Fr, IHC-P, WB
	GTX61887	Cytokeratin 7 antibody [EPR1619Y]	Rb mAb	Hu	FACS, ICC/IF, IHC-P, IP, WB
	GTX41548	Cytokeratin 7 antibody [C-68]	Ms mAb	Hu, Cow, Dog, Pig, Shp	IHC-Fr, IP, WB
	GTX72044	Cytokeratin 7 antibody [OV-TL 12/30]	Ms mAb	Hu	IHC-P
HMWK	GTX100833	Kininogen 1 antibody	Rb pAb	Hu	ICC/IF, IHC-P, WB
	GTX63514	Kininogen-1 antibody [EPR6097]	Rb mAb	Hu	IHC, IP, WB
p63	GTX102425	p63 antibody	Rb pAb	Hu	ICC/IF, IHC-P, WB
	GTX63636	p63 antibody [EPR5701]	Rb mAb	Hu, Ms, Rat	ICC/IF, IHC, IP, WB
	GTX23239	p63 antibody [4A4]	Ms mAb	Hu, Ms, Rat	ICC/IF, IHC-P, IP, WB
TTF1	GTX61637	TTF1 antibody [EP1584Y]	Rb mAb	Hu, Ms, Rat	FACS, ICC/IF, WB
	GTX73885	TTF1 antibody [8G7G3/1]	Ms mAb	Rat	IHC-P
	GTX15244	TTF1 antibody [SPM150]	Ms mAb	Hu, Ms, Rat	IHC-P, WB

### Selected Application References

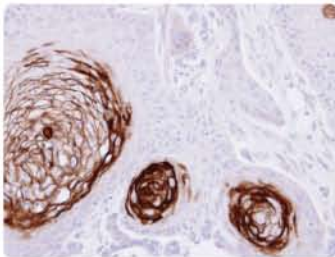
**CD56 / NCAM antibody [H28-123] (GTX19782)**  
Punga, A.R. et al. (2011) Exp Neurol. 230:207-17.  
(WB, Ms)

**p63 antibody [4A4] (GTX102426)**  
Hsu, Y.F. et al. (2011) Biochim Biophys Acta. 1820:104-15. (ChIP, IP, WB, Hu)

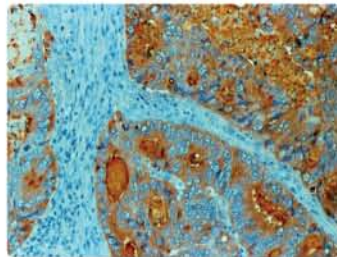
**p63 antibody [4A4] (GTX23239)**  
Krais, A.M. et al. (2011) Carcinogenesis 32:1388-95.

**TTF1 antibody [8G7G3/1] (GTX73885)**  
Yu, S. et al. (2010) Dev Biol. 347:92-108.  
(ICC/IF, IHC, Ms)

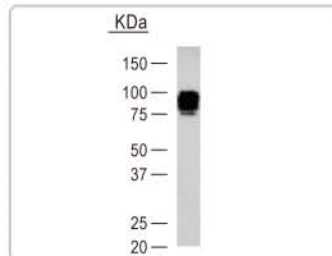
# Tumor markers



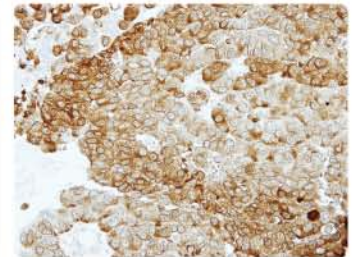
**CEA / CD66e antibody (GTX108732):**  
IHC analysis of paraffin-embedded SG xenograft.



**CEA antibody [Col-1] (GTX17254):**  
IHC analysis of paraffin-embedded human colon carcinoma.



**Chromogranin A antibody (GTX61398):**  
WB analysis on PC12 cell lysate.



**NSE antibody (GTX101553):**  
IHC analysis of paraffin-embedded PC14 xenograft.

	Cat. No.	Product name	Host & Clonality	Reactivity	Application
CA125 / MUC16	GTX62369	CA125 antibody [EPR1020(2)]	Rb mAb	Hu	ICC/IF, IHC-P, WB
	GTX19551	CA125 antibody [10G12]	Ms mAb	Hu	WB, IHC-Fr, ELISA
	GTX10029	MUC16 antibody [X75]	Ms mAb	Hu	ELISA, IHC-P, WB
	GTX10033	MUC16 antibody [X325]	Ms mAb	Hu	ELISA, IHC-P, WB
CEA / CD66e	GTX108732	CEA / CD66e antibody	Rb pAb	Hu	ICC/IF, IHC-P, WB
	GTX113161	CEA / CD66e antibody	Rb pAb	Hu	IHC-P, WB
	GTX10039	CEA antibody [1C7]	Ms mAb	Hu	ELISA, IHC-P, WB
	GTX11330	CEA antibody [C6G9]	Ms mAb	Hu	Dot, IHC-P, WB
	GTX80201	CEA / CD66e antibody [CB30]	Ms mAb	Hu	FACS, IHC-Fr, IHC-P, IP
	GTX17254	CEA antibody [Col-1]	Ms mAb	Hu	IHC-P, IP, WB
Chr A	GTX113165	Chromogranin A antibody	Rb pAb	Hu	WB
	GTX61398	Chromogranin A antibody	Rb pAb	Hu, Ms, Rat	ICC/IF, IHC, WB
	GTX61933	Chromogranin A antibody [EP1030Y]	Rb mAb	Hu	FACS, ICC/IF, IHC-P, WB
	GTX71948	Chromogranin A antibody [LK2H10]	Ms mAb	Hu, Mk, Pig	IHC-Fr, IHC-P, WB
	GTX41686	Chromogranin A antibody [PHE5]	Ms mAb	Hu	IHC-P
CYFRA 21.1	GTX44012	Cyfra-21-1 antibody [B974M]	Ms mAb	Hu	WB, ELISA
NSE	GTX101553	NSE antibody	Rb pAb	Hu, Ms	IHC-P, WB
	GTX62158	NSE antibody [EPR3377]	Rb mAb	Hu, Ms, Rat	FACS, ICC/IF, IHC-P, WB
	GTX10169	NSE antibody [5A4]	Ms mAb	Hu	ELISA, IHC-P, WB
	GTX71959	NSE antibody [5E2]	Ms mAb	Hu	ELISA, IHC-Fr, IHC-P, WB
	GTX75331	NSE antibody [BBS/NC/VI-H14]	Ms mAb	Dog, Gpig, Pig, Rat	IHC-P
ProGRP	GTX72946	ProGRP / Bombesin antibody	Rb pAb	Hu	IHC-Fr, IHC-P

## Selected Application References

### CA125 / MUC16 antibody [OV185:1] (GTX20697)

Tchedre, K.T. et al. (2011) Eye Contact Lens. 37:328-30.

### NSE antibody [5A4] (GTX10169)

Fischer, N. et al. (2010) Int J Cancer. 126:2133-42. (IHC; WB)

### CD66c + CD66e antibody [198] (GTX75419)

Reiterer, G. et al. (2007) Cancer Res. 67:7765-72. (FACS; Hu)



## Share your results using Lung Cancer Marker Antibodies of GeneTex

Do you have image in the following application: Confocal immunofluorescence, immunofluorescence, immunohistochemistry or other images using **Lung Cancer Marker Antibodies of GeneTex**. Share your results with GeneTex and receive a gift. We will also post your image on our website with a citation.



### International

Toll-free : 0809-098988 Tel : 886.3.6208988 Fax : 886.3.6209098  
Address : 6F-2, No.89, Dongmei Rd., East Dist., Hsinchu City 300, Taiwan (R.O.C.)  
E-mail : [info@genetex.com](mailto:info@genetex.com)

### USA

Toll-free : 1.877.GeneTex(1.877.436.3839) Fax : 1.949.309.2888  
Address : 2456 Alton Parkway, Irvine, CA 92606  
E-mail : [info@genetex.com](mailto:info@genetex.com)