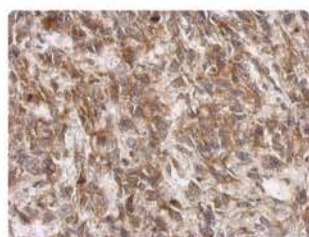


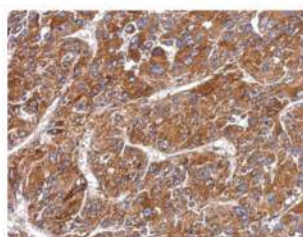
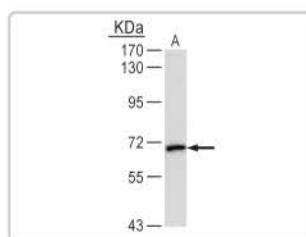
# Matrix Metalloproteinases



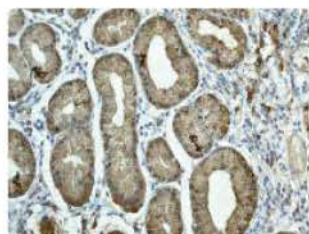
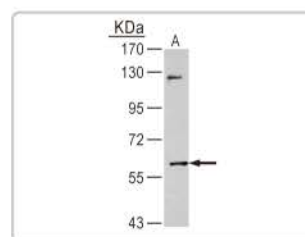
Matrix metalloproteinases (MMPs) comprise a family of zinc-dependent endopeptidases with the ability to degrade the components of the extracellular matrix (ECM), cleave cell surface receptors, and mediate intracellular signaling. They are thought to play pivotal roles in many different biological processes, including development, inflammation, tissue remodeling and regeneration, and in many different pathological disorders, including arthritis, periodontal disease, cardiovascular disease, cancer growth and metastasis. There are total of 25 MMP members, which, based on sequence homology and ECM substrate characteristics, are divided into five subgroups: collagenases, gelatinases, matrilysins, stromelysins, and membrane-type MMPs (MT-MMPs). Although MMP-2 and MMP-9 are more frequently investigated, it remains largely obscure in regard to the functions of other MMPs. Notably, there are several natural inhibitors that fine-tune the MMP mechanisms, including the tissue inhibitor of metalloproteinases (TIMPs), tissue factor pathway inhibitor, RECK, and the alpha-2 macroglobulin.



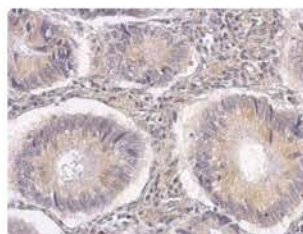
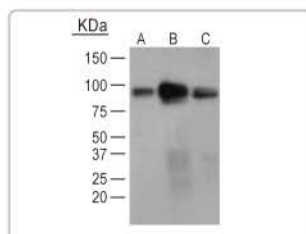
MMP2 antibody (GTX104577)



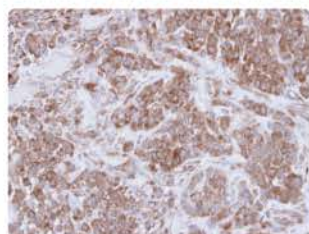
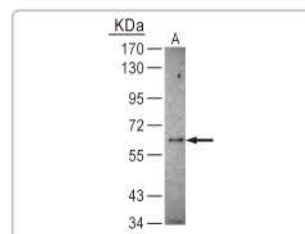
MMP8 antibody (GTX105428)



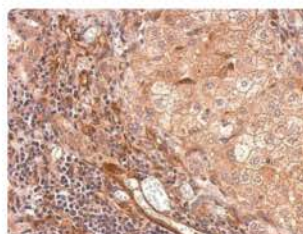
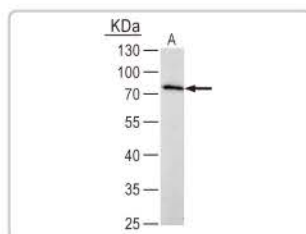
MMP-9 antibody [EP1254] (GTX62122)



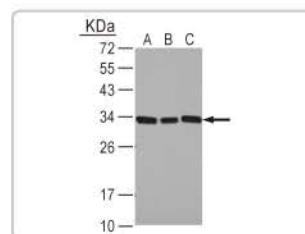
MMP14 antibody (GTX100778)



MMP16 antibody (GTX109378)



TIMP1 antibody (GTX112096)



	<b>Cat. No.</b>	<b>Product Name</b>	<b>Host &amp; Clonality</b>	<b>Reactivity</b>	<b>Application</b>
	GTX100534	MMP1 antibody	Rb pAb	Hu, Ms	IHC-P, WB
	GTX61569	MMP1 antibody [EP1247Y]	Rb mAb	Hu	FACS, ICC/IF, IHC-P, IP, WB
	GTX60467	MMP1 antibody [6A5]	Ms mAb	Hu	ELISA, FACS, ICC/IF, IHC, WB
Citation	GTX104577	MMP2 antibody	Rb pAb	Hu, Ms	ICC/IF, IHC-P, WB
	GTX25704	MMP2 antibody	Rb pAb	Hu, Ms, Cow, Dog, Rat	ELISA, ICC/IF, IP, WB
Citation	GTX30147	MMP2 antibody [MMP2/8B4]	Ms mAb	Hu, Ms, Rat	ELISA, IHC-Fr, IHC-P, IP, WB
	GTX100723	MMP3 antibody [N3C1], Internal	Rb pAb	Hu	ICC/IF, IHC-P, WB
	GTX103647	MMP3 antibody [N1C1]	Rb pAb	Hu	IHC-P, WB
Citation	GTX104658	MMP7 antibody [C2C3], C-term	Rb pAb	Hu, Ms	IHC-P, WB
Citation	GTX17854	MMP7 antibody [SPM294] (ready-to-use)	Ms mAb	Hu	IHC-P
Citation	GTX105428	MMP8 antibody	Rb pAb	Hu	ICC/IF, IHC-P, WB
Citation	GTX100458	MMP9 antibody [N2C1], Internal	Rb pAb	Hu	ICC/IF, IHC-P, WB
	GTX62122	MMP9 antibody [EP1254]	Rb mAb	Hu, Rat	FACS, ICC/IF, IHC-P, WB
Citation	GTX23159	MMP9 antibody [GE-213]	Ms mAb	Hu	IHC-Fr, IP, WB
	GTX113496	MMP10 antibody [N1C1]	Rb pAb	Hu	IHC-P, WB
	GTX25708	MMP10 antibody	Rb pAb	Hu	ELISA, IP, WB
	GTX11610	MMP11 antibody	Rb pAb	Hu	ELISA, IHC, IP, WB
Citation	GTX102928	MMP12 antibody [N3C3]	Rb pAb	Hu	IHC, IHC-P, WB
	GTX88142	MMP12 antibody, Internal	Gt pAb	Hu, Cow, Dog	ELISA, WB
	GTX100665	MMP13 antibody [N3C1], Internal	Rb pAb	Hu	IHC-P, WB
	GTX59793	MMP13 antibody	Rb pAb	Hu, Ms, Rat, Hrs, Bov	IHC, IP, WB
	GTX100778	MMP14 antibody	Rb pAb	Hu	IHC-P, WB
Citation	GTX61603	MMP14 antibody [EP1264Y]	Rb mAb	Hu, Ms, Rat	FACS, ICC/IF, IHC-P, IP, WB
	GTX128207	Mmp14a+b antibody	Rb pAb	Zfsh	IHC-Wm
	GTX15476	MMP15 antibody (ready-to-use)	Rb pAb	Hu, Ms	IHC-P
	GTX23645	MMP15 antibody	Rb pAb	Hu	ICC/IF, IHC-Fr, IHC-P
	GTX86936	MMP15 (cleaved Y132) antibody	Rb pAb	Hu	ELISA, WB
Citation	GTX109378	MMP16 antibody	Rb pAb	Hu, Ms, Rat	IHC-P, WB
	GTX74248	MMP16 (Prodomain) Antibody	Rb pAb	Hu, Ms	IHC, IHC-Fr, WB
	GTX105268	MMP17 antibody [N2C2], Internal	Rb pAb	Hu	ICC/IF, IHC-P, WB
	GTX86926	MMP17 (cleaved Q129) antibody	Rb pAb	Hu	ELISA, WB
	GTX11627	MMP18 antibody	Rb pAb	Xl	ELISA, IHC, IP, WB
	GTX105217	MMP19 antibody	Rb pAb	Hu	IHC-P, WB
	GTX77827	MMP19 antibody	Rb pAb	Hu	IHC, WB
	GTX11633	MMP20 antibody	Rb pAb	Hu	ELISA, IHC, IP, WB
	GTX61543	MMP20 antibody [EP1275Y], C-term	Rb mAb	Hu, Ms, Rat	ICC/IF, WB
	GTX81408	MMP21 Antibody, C-term	Rb pAb	Hu	ELISA, FACS, IHC, IHC-P, WB
	GTX61552	MMP21 antibody [EP1277Y]	Rb mAb	Hu, Ms, Rat	FACS, ICC/IF, IHC-P, IP, WB
	GTX11640	MMP22 antibody	Rb pAb	Chk	WB
	GTX11644	MMP23 antibody	Rb pAb	Hu	ELISA, IHC-Fr, IP, WB
	GTX86949	MMP23 (cleaved Y79) antibody	Rb pAb	Hu, Ms, Rat	ELISA, WB
	GTX116474	MMP23B antibody [N2C3]	Rb pAb	Hu	IHC-P, WB
	GTX128246	MMP24 antibody	Rb pAb	Hu, Ms	WB
	GTX11647	MMP24 antibody	Rb pAb	Hu, Ms	ELISA, FACS, IHC-Fr, IP, WB
	GTX11651	MMP25 antibody	Rb pAb	Hu, Ms	WB
	GTX61728	MMP26 antibody [EP1283Y], C-term	Rb mAb	Hu, Ms, Rat	FACS, WB
	GTX11687	MMP27 antibody	Rb pAb	Hu	WB
	GTX86888	MMP27 (cleaved Y99) antibody	Rb pAb	Hu	ELISA, WB
	GTX116813	MMP28 antibody	Rb pAb	Hu	ICC/IF, IHC-P, WB
Citation	GTX21827	TIMP1 antibody [102D1]	Ms mAb	Hu	IHC-Fr, IHC-P, WB
	GTX112096	TIMP1 antibody	Rb pAb	Hu	IHC-P, WB
Citation	GTX21828	TIMP2 antibody [3A4]	Ms mAb	Hu, Ms, Cow, Pig, Rat, Gpig, Rb	IHC-Fr, IHC-P, WB
	GTX25939	TIMP3 antibody	Rb pAb	Hu	ELISA, IP, WB
	GTX114942	TIMP4 antibody [N1C3]	Rb pAb	Hu	ICC/IF, WB
	GTX89985	Tissue Factor Pathway Inhibitor antibody, C-term	Gt pAb	Hu	ELISA, WB
	GTX80458	RECK Antibody, Internal	Rb pAb	Hu	ELISA, FACS, IHC, IHC-P, WB
	GTX112856	$\alpha$ 2 Macroglobulin antibody [N2N3]	Rb pAb	Hu	WB



#### International

Tel 886.3.6208988  
Fax 886.3.6209098  
Address 6F-2, No.89, Dongmei Rd., Hsinchu 300, Taiwan (R.O.C.)  
E-mail [international@genetex.com](mailto:international@genetex.com)

#### USA

Toll-free 1.877.GeneTex(1.877.436.3839)  
Fax 1.949.309.2888  
Address 2456 Alton Parkway, Irvine, CA 92606 USA  
E-mail [info@genetex.com](mailto:info@genetex.com)



[www.genetex.com](http://www.genetex.com)