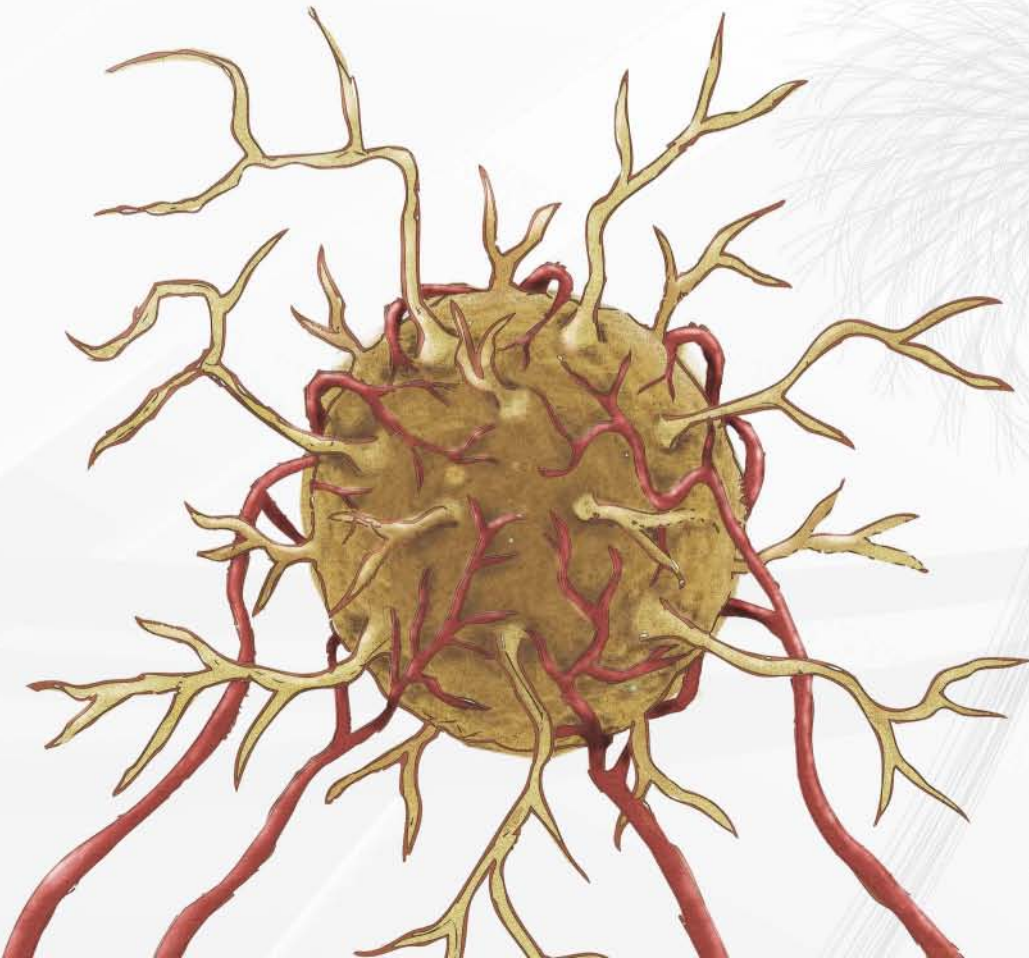


# Cancer



Antibodies & Tissue samples

Quality Antibodies  
Quality Results





## The Company

GeneTex produces high quality antibodies validated through extensive research, development, and testing. Our staff and researchers have collectively earned a trusted reputation from the research community for the quality and reliability of our antibodies. The secret to our success is the complementation of scientific expertise and production mastery in our state-of-the-art laboratory and animal facility.

Our facility provides large-scale antibody production capabilities, which employ highly specific antigen affinity purification. This has facilitated the establishment of a comprehensive antibody collection covering a wide spectrum of research fields.

Because of GeneTex's extensive experience in antibody manufacturing, we are uniquely able to serve the demands of the scientific community by providing accurate technical support and reliable customer service.



# Table of Contents

Tumor Suppressors & Oncoproteins.....	02
-Featured Targets.....	02
-TGF beta Signaling.....	04
-beta-Catenin Signaling .....	05
-Notch Signaling .....	06
-Sonic Hedgehog Signaling .....	06
-Receptor Tyrosine Kinases.....	07
-Ras-Raf-ERK Signaling .....	09
-PI3K-Akt Signaling.....	10
-Transcription Factors .....	11
-Nuclear Receptors .....	12
Tumor Markers.....	13
Human Tissue Samples .....	17

## Application Key

- EIA** - Enzyme Immunoassay
- ELISA** - Enzyme-linked immunosorbent assay
- ELISA-Ag** - Enzyme-linked immunosorbent assay using antigen
- FACS** - Fluorescence-activated cell sorting
- GSA** - Gel supershift assays
- ICC/IF** - Immunocytochemistry / Immunofluorescence
- IHC** - Immunohistochemistry
- IHC-Fr** - Immunohistochemistry frozen sections
- IHC-P** - Immunohistochemistry paraffin-embedded sections
- IP** - Immunoprecipitation
- Neut** - Neutralization
- RIA** - Radioimmunoassay
- RID** - Radial immunodiffusion
- WB** - Western Blot

## Host & Reactivity Key



























- Cow** - Cow
- Dog** - Dog
- Gt** - Goat
- Hm** - Hamster
- Hu** - Human
- Mk** - Monkey
- Ms** - Mouse
- Pig** - Pig
- Rat** - Rat
- Rb** - Rabbit
- XI** - Xenopus
- Zfsh** - Zebrafish

# Tumor Suppressors & Oncoproteins

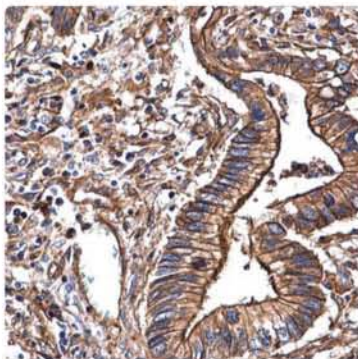
Cancer progression is controlled by the balance of two opposing forces within cells. Oncogenes are genes that can promote the development or progression of cancer. Oncogenes are the product of normal cellular genes called proto-oncogenes that become activated after undergoing mutation or amplification. These genes typically encode proteins that play critical roles in proliferation and differentiation. Tumor suppressors, on the other hand, are proteins that antagonize the development or progression of cancer. These proteins are typically involved in the regulation of cell cycle progression or the promotion of apoptosis. Loss of function mutations to tumor suppressor genes render cells susceptible to oncogenic transformation.

## Featured Targets

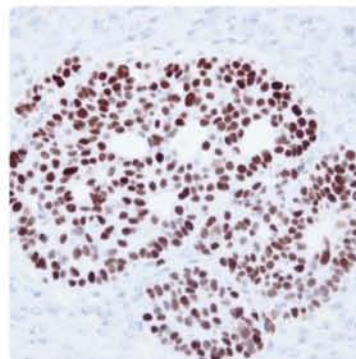
 Citation

	Cat. No.	Product	Host & Clonality	Reactivity	Application	
DNA Damage/ Repair	 GTX70214	p53 antibody [D01]	Ms mAb	Hu	IHC-Fr, IHC-P, WB	
	 GTX70216	p53 antibody [Pab1801]	Ms mAb	Hu	ELISA, FACS, IHC-Fr, IHC-P, IP, RIA, WB, CHIP assay	
	 GTX102965	p53 antibody	Rb pAb	Hu	ICC/IF, IHC-P, IP, WB, CHIP assay	
		GTX128135	p53 antibody	Rb pAb	Zfsh	WB, IHC-Wm
	 GTX70111	BRCA1 antibody [17F8] - ChIP grade	Ms mAb	Hu, Ms	ELISA, ICC/IF, IHC, IHC-P, IP, WB, CHIP assay	
	 GTX70113	BRCA1 antibody [8F7]	Ms mAb	Hu, Ms	IHC, IHC-P, IP, WB	
	 GTX70115	BRCA1 antibody [6B4] - ChIP grade	Ms mAb	Hu, Ms	ICC/IF, IHC, IP, WB, CHIP assay	
	 GTX70121	BRCA2 antibody [3E6]	Ms mAb	Hu	ICC/IF, IHC, IP, WB	
	 GTX70123	BRCA2 antibody [5F6]	Ms mAb	Hu	IHC, IHC-Fr, IHC-P, WB	
	 GTX70119	BRCA2 antibody [9D3]	Ms mAb	Hu	IHC, IHC-P, IP, WB	
Cell Cycle Control	 GTX20833	Ki67 antibody	Rb pAb	Hu, Ms, Rat	ICC/IF, IHC, IHC-P	
	 GTX16667	Ki67 antibody [SP6]	Rb mAb	Hu, Ms, Rat	ICC/IF, IHC, IHC-Fr, IHC-P, WB	
	 GTX102993	CDK4 antibody	Rb pAb	Hu, Ms	ICC/IF, IHC-P, WB	
	 GTX100444	p21 antibody	Rb pAb	Hu	ICC/IF, WB	
	 GTX112898	p21 antibody	Rb pAb	Hu, Chk	ICC/IF, IHC-P, WB	
		GTX629543	p21 antibody [GT1032]	Ms mAb	Hu	ICC/IF, IP, WB
		GTX629627	p21 antibody [GT8611]	Ms mAb	Hu	ICC/IF, WB
	 GTX101300	CHK2 antibody [C2C3], C-term	Rb pAb	Hu	WB	
	 GTX108624	Cyclin D1 antibody [N1C3]	Rb pAb	Hu, Ms	IHC-P, WB	
	 GTX112874	Cyclin D1 antibody [N2C3]	Rb pAb	Hu, Ms	ICC/IF, IHC-P, WB	
	 GTX23642	p14ARF antibody	Rb pAb	Hu	ICC/IF, IHC, IHC-Fr, IHC-P, WB	
	 GTX20080	p19ARF antibody	Rb pAb	Hu, Ms	ELISA, ICC/IF, IHC-P, IP, WB, CHIP assay	
		GTX100545	Rb antibody	Rb pAb	Hu	IHC-P, IP, WB
		GTX50193	Rb (phospho Ser780) antibody	Rb pAb	Hu, Ms, Rat	ICC/IF, IHC, IHC-P, WB
		GTX50191	Rb (phospho Ser795) antibody	Rb pAb	Hu, Ms, Rat	ICC/IF, IHC, IHC-P, WB
	 GTX115554	RbAp48 antibody [N1C2]	Rb pAb	Hu	ICC/IF, IHC-P, WB	
		GTX112912	E2F1 antibody [N2C2], Internal	Rb pAb	Hu, Ms	ICC/IF, WB
Apoptosis	 GTX110543	Caspase 3 antibody	Rb pAb	Hu, Ms	ICC/IF, IHC-P, WB	
	 GTX112888	Caspase 9 antibody [N2C3]	Rb pAb	Hu, Rat	WB	
	 GTX100573	PARP1 antibody	Rb pAb	Hu	ICC/IF, WB, CHIP assay	
	 GTX628836	PARP1 antibody [GT6212]	Ms mAb	Hu	WB	
	 GTX110087	clAP1 antibody	Rb pAb	Hu, Ms, Rat	IHC-P, WB	
		GTX629402	clAP1 antibody [GT422]	Ms mAb	Hu	WB
		GTX116024	CD95 antibody [N3C2], Internal	Rb pAb	Hu	WB
	 GTX13549	CD95 antibody [ZB4]	Ms mAb	Hu	Blocking, FACS, IHC, WB	

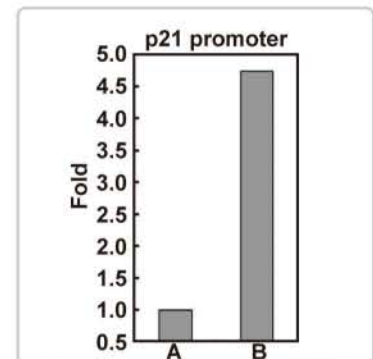
	Cat. No.	Product	Host & Clonality	Reactivity	Application
Angiogenesis	GTX102643	VEGF antibody	Rb pAb	Hu	IHC-P, WB
	Ⓢ GTX74091	VEGF antibody	Rb pAb	Ms	ELISA, ICC/IF, IHC-P, WB, Functional Assay
	Ⓢ GTX20119	VEGF antibody [VG76e]	Ms mAb	Hu, Ms	ELISA, WB
	GTX83426	VEGF antibody [4E3]	Ms mAb	Hu	ICC/IF, IHC, IHC-P, WB
	GTX128969	VEGF Receptor 1 antibody	Rb pAb	Hu	WB
	GTX129943	VEGF Receptor 2 antibody	Rb pAb	Hu	WB
Metastasis	GTX100807	VEGF Receptor 3 antibody	Rb pAb	Hu	WB
	Ⓢ GTX104577	MMP2 antibody	Rb pAb	Hu, Ms	ICC/IF, IHC-P, WB
	Ⓢ GTX30147	MMP2 antibody [MMP2/8B4]	Ms mAb	Hu, Ms, Rat	ELISA, ICC/IF, IHC-Fr, IHC-P, IP, WB
	Ⓢ GTX100458	MMP9 antibody [N2C1], Internal	Rb pAb	Hu	ICC/IF, IHC-P, WB
	Ⓢ GTX23159	MMP9 antibody [GE-213]	Ms mAb	Hu	IHC-Fr, IP, WB
	GTX113557	ST14 antibody	Rb pAb	Hu, Ms	IHC-P, WB
	GTX108375	ST14 antibody	Rb pAb	Ms	WB
Hypoxia	GTX129407	AXL antibody	Rb pAb	Hu	IHC-P, WB
	Ⓢ GTX127309	HIF1 alpha antibody	Rb pAb	Hu, Ms	ICC/IF, IHC-P, IP, WB, ChIP assay
	GTX628480	HIF1 alpha antibody [GT10211]	Ms mAb	Hu	ICC/IF, IP, WB
	Ⓢ GTX101087	VHL antibody	Rb pAb	Hu, Ms, Rat	ICC/IF, IHC-P, IP, WB
	Ⓢ GTX11189	Von Hippel Lindau protein antibody [3F391]	Ms mAb	Hu	IHC, IHC-P, WB
	Ⓢ GTX128428	Carbonic Anhydrase IX antibody	Rb pAb	Hu, Ms	ICC/IF, IHC, IHC-P, WB
Stem Characteristics	Ⓢ GTX70020	CAIX antibody [GT12]	Ms mAb	Hu	FACS, ICC/IF, IHC, IHC-Fr, IHC-P, IP, WB
	GTX629747	Carbonic Anhydrase IX antibody [GT14212]	Ms mAb	Hu	ICC/IF, WB
	GTX100371	LGR5 antibody [C3], C-term	Rb pAb	Hu, Ms	IHC-P, WB
	GTX113037	LGR5 antibody	Rb pAb	Hu	WB



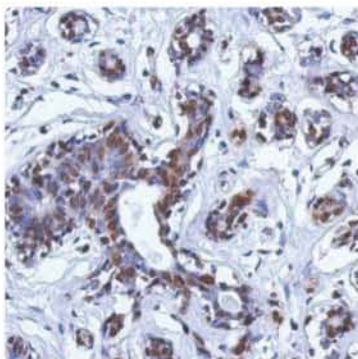
**AXL antibody [GTX129407]**  
IHC-P analysis with AXL antibody on human gastric carcinoma.



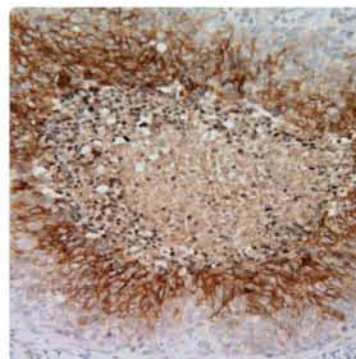
**p53 antibody [GTX102965]**  
IHC-P analysis with p53 antibody on Cat27 xenograft.



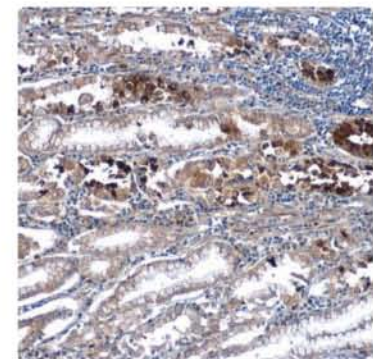
**p53 antibody [D01] - ChIP grade [GTX70214]**  
ChIP analysis with p53 antibody on whole cell extract of CPT-treated HCT116 cells.



**BRCA1 antibody [8F7] [GTX70113]**  
IHC-P analysis with BRCA1 antibody on human breast carcinoma.



**CAIX antibody [GT12] [GTX70020]**  
IHC-P analysis with CAIX antibody on human cervical carcinoma.



**LGR5 antibody [C3], C-term [GTX100371]**  
IHC-P analysis with LGR5 antibody on human gastric carcinoma.

## TGF beta Signaling

## TGFb Receptors &amp; BMP receptors

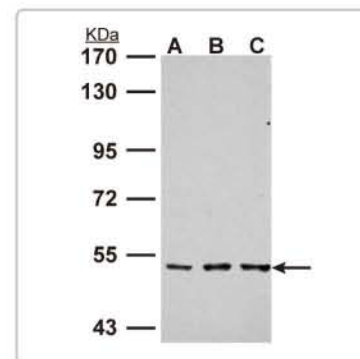
Citation

Cat. No.	Product	Host & Clonality	Reactivity	Application
● GTX102784	TGF beta Receptor I antibody	Rb pAb	Hu, Rat	ICC/IF, IHC-P, WB
GTX109068	TGF beta Receptor III antibody	Rb pAb	Hu	WB
GTX37527	TGF beta Receptor 2 antibody	Rb pAb	Hu, Ms, Rat	ELISA, IHC-P, WB
GTX113140	BMPR1A antibody	Rb pAb	Hu	WB
GTX100823	BMPR1A antibody [N1N2], N-term	Rb pAb	Hu	IHC-P
● GTX102453	BMPR1B antibody [N3C3]	Rb pAb	Hu, Cow	IHC-P, WB
GTX128200	Bmpr1ba+b antibody	Rb pAb	Zfsh	IHC-Wm
GTX102418	BMPR2 antibody [C1C3]	Rb pAb	Hu, Ms	WB
GTX60415	BMPR2 antibody [3F6]	Ms mAb	Hu, Ms, Mk, Rat	ELISA, ICC/IF, IHC, WB

## Smads

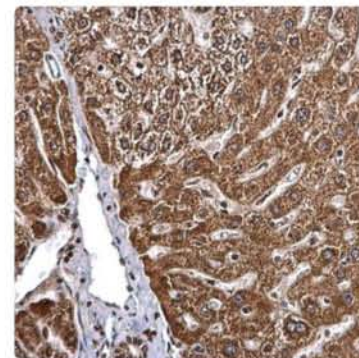
Citation

Cat. No.	Product	Host & Clonality	Reactivity	Application
GTX50625	SMAD1 antibody	Rb pAb	Hu, Ms, Rat	ICC/IF, WB
GTX50330	SMAD1 (phospho Ser465) antibody	Rb pAb	Hu, Ms, Rat	WB
● GTX111131	SMAD2 antibody	Rb pAb	Hu	ICC/IF, IP, WB, ChIP assay
GTX111075	SMAD2 antibody	Rb pAb	Hu	ICC/IF, WB
GTX61272	SMAD2 antibody [EP567Y]	Rb mAb	Hu, Ms, Rat	FACS, ICC/IF, WB
GTX50331	SMAD2 (phospho Ser467) antibody	Rb pAb	Hu, Ms, Rat	WB
GTX50332	SMAD2 (phospho Thr220) antibody	Rb pAb	Hu, Ms, Rat	WB
GTX111123	SMAD3 antibody	Rb pAb	Hu	ICC/IF, IHC-P, IP, WB, ChIP assay
● GTX108638	SMAD3 antibody	Rb pAb	Hu, Ms	IHC-P, WB
GTX112979	SMAD3 antibody	Rb pAb	Hu	ICC/IF, WB
GTX50333	SMAD3 (phospho Ser425) antibody	Rb pAb	Hu, Ms, Rat	IHC-P, WB
GTX112980	SMAD4 antibody	Rb pAb	Hu, Ms, Rat	ICC/IF, IHC-P, WB
GTX82787	SMAD4 antibody [4G1C6]	Ms mAb	Hu	ELISA, FACS, ICC/IF, IHC, IHC-P, IP, WB
GTX61305	SMAD4 antibody [EP618Y], C-term	Rb mAb	Hu, Ms, Rat	FACS, ICC/IF, IHC-P, WB
GTX108917	SMAD5 antibody	Rb pAb	Hu, Ms, Rat	WB
● GTX124559	Smad5 antibody	Rb pAb	Zfsh	IHC-P, WB
GTX60384	SMAD5 antibody [3H9]	Ms mAb	Hu, Rat	ELISA, FACS, ICC/IF, IHC, WB
GTX61808	SMAD5 (phospho Ser463/465) antibody [EP728(2)AY]	Rb mAb	Hu	ICC/IF, WB
GTX77884	SMAD6 antibody	Rb pAb	Hu	IHC, IHC-P, WB
GTX59874	SMAD7 antibody	Rb pAb	Hu, Ms, Rat	WB
GTX13723	SMAD8 antibody	Rb pAb	Hu	WB
GTX114540	SMAD9 antibody	Rb pAb	Hu	ICC/IF, IHC-P, WB



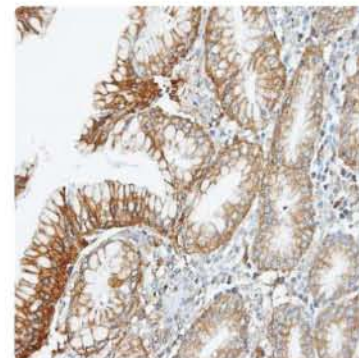
## TGF beta Receptor I antibody (GTX102784)

WB analysis with TGF beta Receptor I antibody on whole cell lysate of (A) A431 cells (B) HeLa cells (C) HepG2 cells.



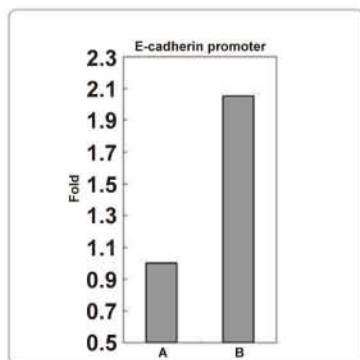
## BMPR1B antibody [N3C3] (GTX102453)

IHC-P analysis with BMPR1B antibody on human hepatoma.



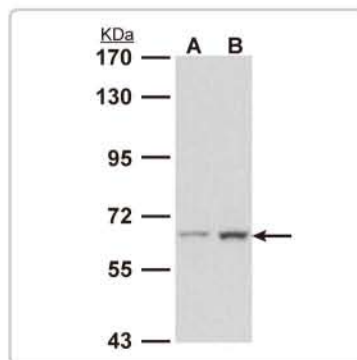
## BMPR1A antibody [N1N2], N-term (GTX100823)

IHC-P analysis with BMP Receptor 1A antibody on human gastric carcinoma.



## SMAD2 antibody (GTX111131)

ChIP analysis with SMAD2 antibody on whole cell lysate of HeLa cell.



## SMAD4 antibody (GTX112980)

WB analysis with SMAD4 antibody on whole cell lysate of (A) HeLa cells (B) HepG2 cells.

## beta-Catenin Signaling

## Catenin

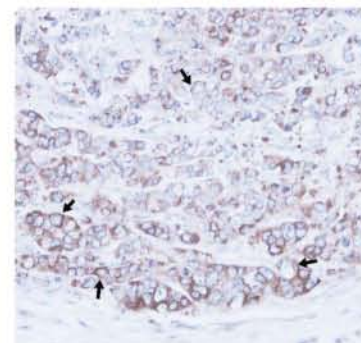
Citation

Cat. No.	Product	Host & Clonality	Reactivity	Application
GTX111168	alpha 1 Catenin antibody [N1N3]	Rb pAb	Hu, Ms	ICC/IF, IHC-P, IP, WB
GTX111095	alpha 1 Catenin antibody [N3C2], Internal	Rb pAb	Hu, Ms, Rat	ICC/IF, IHC-Fr, IHC-P, WB
GTX106014	alpha 1 Catenin antibody	Rb pAb	Hu, Ms	IHC-P, WB
GTX89347	alpha 1 Catenin antibody, Internal	Gt pAb	Hu	ELISA, IHC-P, WB
GTX17259	alpha Catenin antibody [1G5]	Ms mAb	Hu	ICC/IF, IP, WB
Ⓢ GTX22981	alpha Catenin antibody	Rb pAb	Hu, Ms, XI	ICC/IF, IHC-P, IP, WB
GTX19446	alpha Catenin antibody [BD1950]	Ms mAb	Hu, Ms, Rat	ELISA, ICC/IF, IP, WB
Ⓢ GTX101435	beta Catenin antibody [N1N2-2], N-term	Rb pAb	Hu, Ms, Rat	ICC/IF, IHC-P, IP, WB, ChIP assay
Ⓢ GTX101254	beta Catenin antibody	Rb pAb	Hu, Ms	ICC/IF, IHC-P, WB
Ⓢ GTX61089	beta Catenin antibody [E247], N-term	Rb mAb	Hu, Ms, Rat	ICC/IF, IHC, IHC-Fr, IHC-P, IP, WB
Ⓢ GTX26300	beta Catenin antibody [6F9]	Ms mAb	Hu, Cow, Dog	ICC/IF, WB
Ⓢ GTX15180	beta Catenin antibody (ready-to-use)	Rb pAb	Hu, Ms	IHC, IHC-P
GTX50256	beta Catenin (phospho Ser37) antibody	Rb pAb	Hu, Ms, Rat	IHC, IHC-P, WB
GTX50255	beta Catenin (phospho Ser33) antibody	Rb pAb	Hu, Ms, Rat	ICC/IF, IHC, IHC-P, WB
GTX61984	beta Catenin (phospho Ser33/S37) antibody [EP742(2)Y]	Rb mAb	Hu	WB
GTX61958	beta Catenin (phospho Thr41/pT45) antibody [EP1905Y]	Rb mAb	Hu	IP, WB

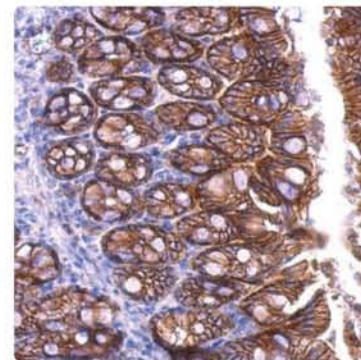
## Wnt

Citation

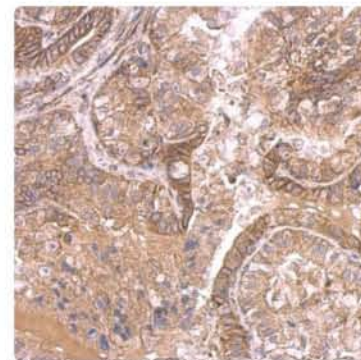
Cat. No.	Product	Host & Clonality	Reactivity	Application
Ⓢ GTX111182	Wnt1 antibody	Rb pAb	Hu	WB
Ⓢ GTX15251	Wnt1 antibody	Rb pAb	Hu, Ms, Rat	IHC, IHC-P, WB
GTX83320	Wnt1 antibody [10C8]	Ms mAb	Hu, Ms	ELISA, FACS, ICC/IF, IHC-P, WB
Ⓢ GTX62603	WNT2 antibody [EPR3101(2)]	Rb mAb	Hu, Ms, Rat	ICC/IF, IHC-P, IP, WB
GTX128100	WNT3 antibody	Rb pAb	Hu	WB
GTX50033	WNT3A antibody [3A6]	Ms mAb	Hu	ELISA, IHC, IHC-P, WB
GTX89319	WNT3 antibody, Internal	Gt pAb	Hu, Ms	ELISA, IHC, IHC-P, WB
Ⓢ GTX101085	WNT4 antibody	Rb pAb	Hu	IHC-P, WB
GTX81775	WNT4 antibody, Internal	Rb pAb	Hu, Ms	ELISA, FACS, IHC, IHC-P, WB
GTX100618	WNT5A antibody	Rb pAb	Hu	WB
GTX83127	WNT5A antibody [6F2]	Ms mAb	Hu	ELISA, ICC/IF, IHC, IHC-P, WB
GTX81146	WNT5B antibody, Internal	Rb pAb	Hu, Ms	ELISA, FACS, IHC, IHC-P, WB
GTX59917	Wnt-6 antibody	Rb pAb	Hu, Ms, Rat	WB
GTX105680	WNT7A antibody	Rb pAb	Hu	IHC-P, WB
GTX114881	Wnt7b antibody	Rb pAb	Hu	IHC-P, WB
GTX128108	WNT8A antibody	Rb pAb	Hu	IHC-P, WB
GTX128110	WNT9A antibody	Rb pAb	Hu	WB
GTX111893	WNT9B antibody [C2C3], C-term	Rb pAb	Hu	WB
GTX111191	WNT10A antibody [N1C1-2]	Rb pAb	Hu	ICC/IF, WB
Ⓢ GTX105971	WNT11 antibody	Rb pAb	Hu, Ms	ICC/IF, IHC, IHC-P, WB
GTX63386	WNT16 antibody [EPR6064]	Rb mAb	Hu, Ms, Rat	IP, WB

**α-Catenin antibody (GTX111168)**

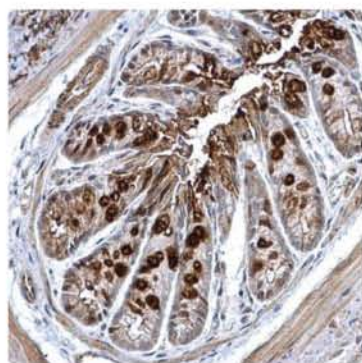
IHC-P analysis with α-Catenin antibody on DLD-1 xenograft.

**beta Catenin antibody [N1N2-2], N-term (GTX101435)**

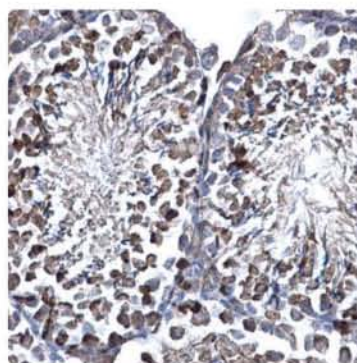
IHC-P analysis with beta Catenin antibody on mouse colon tissue.

**IHH antibody (GTX110355)**

IHC-P analysis with IHH antibody on mouse prostate.

**WNT10B antibody [N3C3] (GTX103633)**

IHC-P analysis with WNT10B antibody on mouse colon tissue.

**Suppressor of Fused antibody [C1C3] (GTX114223)**

IHC-P analysis with Suppressor of Fused antibody on mouse testis.

## beta-Catenin Signaling

## E-Cadherins

Citation

Cat. No.	Product	Host & Clonality	Reactivity	Application
Ⓢ GTX100443	E-cadherin antibody	Rb pAb	Hu	ICC/IF, IHC-P, IP, WB
GTX124178	E-cadherin antibody [N3C2], Internal	Rb pAb	Hu	ICC/IF, WB
GTX629692	E-cadherin antibody [GT311]	Ms mAb	Hu	IP, WB
GTX125890	Cdh1 antibody	Rb pAb	Zfish	IHC, IHC-Wm

## APC &amp; Axin1

Citation

Cat. No.	Product	Host & Clonality	Reactivity	Application
Ⓢ GTX116009	APC antibody [C3], C-term	Rb pAb	Hu, Ms	ICC/IF, IHC, IHC-P
Ⓢ GTX15270	APC antibody	Rb pAb	Hu, Ms, Rat	IHC, IHC-P, IP, WB
Ⓢ GTX16794	APC antibody [CC-1]	Ms mAb	Hu, Ms, Rat	ICC/IF, IHC-F, IHC-Fr, IHC-P
GTX20120	APC antibody [c-APC 28.9]	Ms mAb	Hu, Ms	ICC/IF, IHC-Fr, IP, WB
GTX113582	AXIN1 antibody [N1N2], N-term	Rb pAb	Hu	WB
GTX104673	Axin 1 antibody [C3], C-term	Rb pAb	Hu	WB
GTX89836	AXIN1 antibody, C-term	Gt pAb	Hu	ELISA, IHC, IHC-P

## Notch Signaling

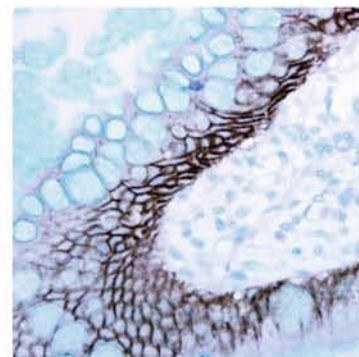
Citation

Cat. No.	Product	Host & Clonality	Reactivity	Application
Ⓢ GTX28925	NOTCH1 antibody	Rb pAb	Hu, Ms, Rat	ELISA, ICC/IF, IHC, IHC-P, Neut, WB
GTX84019	NOTCH1 antibody [3E12]	Ms mAb	Hu	ICC/IF, IHC, IHC-P, WB
GTX84020	NOTCH1 antibody [4C9]	Ms mAb	Hu	IHC, IHC-P, WB
GTX86924	Notch 1 (cleaved Val744) antibody	Rb pAb	Hu, Ms, Rat	ELISA, IHC, IHC-P, WB
GTX101593	NOTCH2 antibody [C2], C-term	Rb pAb	Hu, Ms	WB, ChIP-seq
GTX86911	NOTCH2 (cleaved Val697) antibody	Rb pAb	Hu, Ms, Rat	ELISA, WB
GTX86904	NOTCH2 (cleaved Ala734) antibody	Rb pAb	Hu, Ms, Rat	ELISA, WB
GTX86955	Notch 2 (cleaved Asp733) antibody	Rb pAb	Hu, Ms, Rat	ELISA, IHC, IHC-P, WB
GTX89477	NOTCH2 antibody, Internal	Gt pAb	Hu, Ms, Cow, Dog, Pig, Rat	ELISA
GTX39545	Notch 2 antibody [HMN2-35]	Hamster mAb	Ms, Rat	FACS
GTX104681	Notch 3 antibody [C3], C-term	Rb pAb	Hu	WB
GTX89476	NOTCH3 antibody, C-term	Gt pAb	Hu, Ms, Rat	ELISA, IHC-P
GTX39543	Notch 3 antibody [HMN3-133]	Hamster mAb	Ms, Rat	FACS

## Sonic Hedgehog Signaling

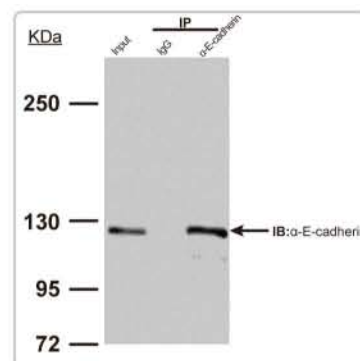
Citation

Cat. No.	Product	Host & Clonality	Reactivity	Application
Ⓢ GTX61451	Sonic Hedgehog Protein / SHH (C-Product) antibody [EP1190Y]	Rb mAb	Hu	FACS, ICC/IF, IHC-P, IP, WB
GTX37548	Sonic Hedgehog antibody	Rb pAb	Hu, Ms, Rat	ELISA, IHC-P, WB
GTX110355	IHH antibody	Rb pAb	Ms	IHC-P
GTX61511	Indian Hedgehog (IHH) antibody [EP1192Y], N-term	Rb mAb	Hu, Ms, Rat	IHC-P, WB
GTX109762	Dhh antibody [N3C3]	Rb pAb	Hu	WB
GTX108015	PTCH1 antibody	Rb pAb	Hu	WB
GTX83771	Patched1 antibody [5c7]	Ms mAb	Hu	ICC/IF, IHC, IHC-P, WB
GTX70350	PTCH2 antibody	Rb pAb	Hu	ELISA, WB
GTX89213	SMO antibody, C-term	Gt pAb	Hu	ELISA, WB
GTX124274	Gli1 antibody	Rb pAb	Hu, Ms	IHC-P, WB
GTX106207	GLI1 antibody	Rb pAb	Hu	ICC/IF, IP, WB
Ⓢ GTX27523	Gli1 antibody	Rb pAb	Hu, Ms	ELISA, ICC/IF, IHC, IHC-P, WB
GTX114223	Suppressor of Fused antibody [C1C3]	Rb pAb	Hu, Ms	ICC/IF, IHC-P, WB
GTX50359	Sufu (phospho Ser342) antibody	Rb pAb	Hu	WB
GTX61508	Suppressor of Fused (SUFU) antibody [EP1207Y]	Rb mAb	Hu, Ms, Rat	FACS, ICC/IF, IHC-P, IP, WB



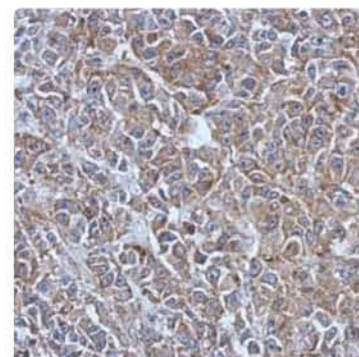
E-cadherin antibody (GTX100443)

IHC-P analysis with E-cadherin antibody on human ulcerative colitis tissue.



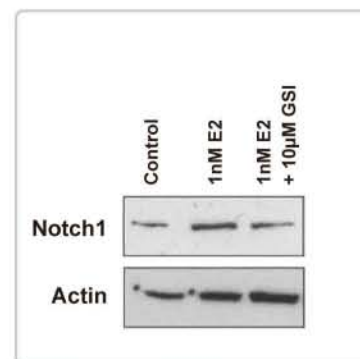
E-cadherin antibody [GT311] (GTX629692)

WB analysis with E-cadherin antibody on whole cell extract of MCF-7 cells.



APC antibody [C3], C-term (GTX116009)

IHC-P analysis with APC antibody on HBL435 xenograft.



NOTCH1 antibody (GTX28925)

WB analysis with NOTCH1 antibody on whole cell lysate of MCF-7 cells.

## Receptor Tyrosine Kinases

### c-Kit

Citation

Cat. No.	Product	Host & Clonality	Reactivity	Application
GTX61165	c-Kit/CD117 antibody [Y145], C-term	Rb mAb	Hu	IHC-P, WB
GTX25633	c-Kit (phospho Tyr730) antibody	Rb pAb	Hu, Ms, Cow, Dog, Rat	WB
GTX25634	c-Kit (phospho Tyr823) antibody	Rb pAb	Hu, Ms, Cow, Dog, Rat	WB
GTX25616	c-Kit (phospho Tyr568/Tyr570) antibody	Rb pAb	Hu, Ms, Rat	WB
GTX25635	c-Kit (phospho Tyr936) antibody	Rb pAb	Hu	WB
GTX82073	KIT antibody	Chicken pAb	Hu	WB
GTX83074	C-Kit antibody [8D7]	Ms mAb	Hu	ELISA, IHC, IHC-P, WB

### c-Met

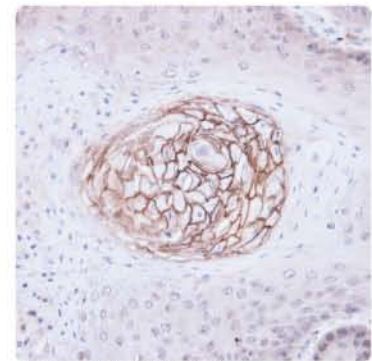
Citation

Cat. No.	Product	Host & Clonality	Reactivity	Application
GTX100637	c-Met antibody [C3], C-term	Rb pAb	Hu	ICC/IF, IHC-P, WB
GTX50668	c-Met antibody	Rb pAb	Hu, Ms, Rat	IHC, IHC-P, WB
GTX50262	c-Met (phospho Tyr1234) antibody	Rb pAb	Hu, Ms, Rat	WB
GTX61903	c-Met (phospho Tyr1349) antibody [EP2367Y]	Rb mAb	Hu	ICC/IF, IHC-P, IP, WB

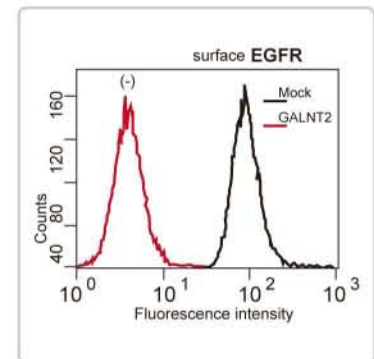
### EGFR

Citation

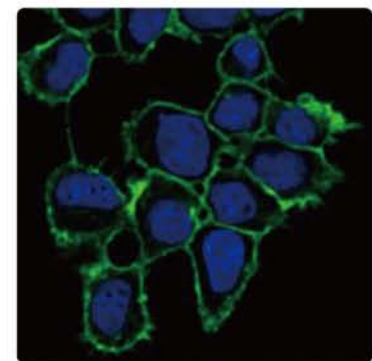
Cat. No.	Product	Host & Clonality	Reactivity	Application
GTX100448	EGFR antibody [C2C3], C-term	Rb pAb	Hu	FACS, ICC/IF, IHC-P, IP, WB
GTX121919	EGFR antibody [N1-2], N-term	Rb pAb	Hu, Ms	FACS, ICC/IF, IHC-P, IP, WB
GTX100725	EGFR antibody [N1], N-term	Rb pAb	Hu	ICC/IF, IHC-P, WB
GTX628887	EGFR antibody [GT133]	Ms mAb	Hu	ICC/IF, IHC-P, IP, WB
GTX628888	EGFR antibody [GT461]	Ms mAb	Hu	ICC/IF, WB
GTX50671	EGFR antibody	Gt pAb	Hu, Ms, Rat	IHC-Fr, WB
GTX50233	EGFR (phospho Thr678) antibody	Rb pAb	Hu, Ms, Rat	IHC-P, WB
GTX50234	EGFR (phospho Thr693) antibody	Rb pAb	Hu, Ms, Rat	WB
GTX62226	EGFR (phospho Ser695) antibody [EPR2257]	Rb mAb	Hu	ICC/IF, WB
GTX61926	EGFR (phospho Tyr845) antibody [EPR2149Y]	Rb mAb	Hu	ICC/IF, WB
GTX50264	EGFR (phospho Tyr869) antibody	Rb pAb	Hu, Ms, Rat	WB
GTX80162	EGFR (phospho Tyr992) antibody [EM-12]	Ms mAb	Hu	FACS, IP, WB
GTX61057	EGFR (phospho Tyr1068) antibody [Y38]	Rb mAb	Hu	FACS, ICC/IF, IHC-P, IP, WB
GTX61353	EGFR (phospho Tyr1092) antibody [EP774Y]	Rb mAb	Hu, Ms	ICC/IF, IHC-P, WB
GTX50257	EGFR (phospho Tyr1172) antibody	Rb pAb	Hu, Ms, Rat	IHC, IHC-P, WB
GTX25652	EGFR (phospho Tyr1173) antibody	Rb pAb	Hu, Ms, Rat	ELISA, WB
GTX42900	EGFR (phospho Tyr1173) antibody [9H2]	Ms mAb	Hu	ELISA, ICC/IF, IP, WB
GTX61052	EGFR (phospho Tyr1173) antibody [E124]	Rb mAb	Hu	ICC/IF, IHC-P, IP, WB
GTX50263	EGFR (phospho Tyr1197) antibody	Rb pAb	Hu, Ms, Rat	IHC, IHC-P, WB
GTX50289	EGFR (phospho Tyr1110) antibody	Rb pAb	Hu, Ms, Rat	WB
GTX50358	EGFR (phospho-Tyr1197) antibody	Gt pAb	Hu, Ms, Rat	WB



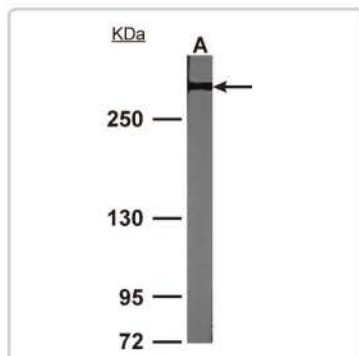
**c-Met antibody (GTX100637)**  
IHC-P analysis with co-Met antibody on Cal27 xenograft.



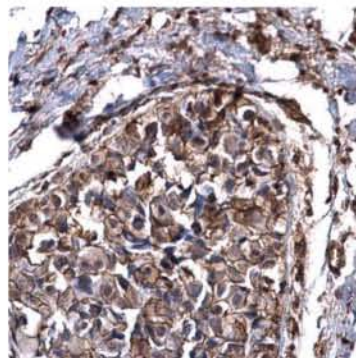
**EGFR antibody [C2C3], C-term (GTX100448)**  
FACS analysis with EGFR antibody on Huh7 cells.



**EGFR antibody [C2C3], C-term (GTX100448)**  
ICC/IF analysis with EGFR antibody on A431 cells.



**NOTCH2 antibody [C2], C-term (GTX101593)**  
WB analysis with NOTCH2 antibody on whole cell lysate of NIH-3T3 cells.



**ErbB2(Her2) antibody (GTX100732)**  
IHC-P analysis with ErbB2(Her2) antibody on human breast carcinoma.

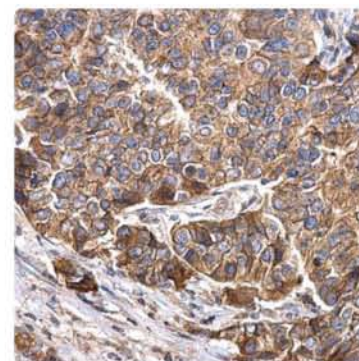


## Receptor Tyrosine Kinases

## ErbB2 (HER2)

Citation

Cat. No.	Product	Host & Clonality	Reactivity	Application
GTX117480	ErbB2 antibody	Rb pAb	Hu	IHC-P, WB
GTX16662	ErbB2 antibody [SP3]	Rb mAb	Hu	IHC, IHC-P
GTX14027	ErbB2 antibody	Chk pAb	Hu, Ms, Rat	ICC/IF, WB
GTX20201	ErbB2 (phospho Thr686) antibody	Rb pAb	Hu	ELISA, IHC-Fr, WB
GTX50142	HER2 (phospho Tyr877) antibody	Rb pAb	Hu, Ms, Rat	ICC/IF, IHC, IHC-P, WB
GTX61586	HER2 (phospho Tyr1139) antibody [EP1046Y]	Rb mAb	Hu	FACS, IP, WB
GTX53594	ErbB2 (phospho Tyr1140) antibody	Rb pAb	Ms	Dot, WB
GTX50143	HER2 (phospho Tyr1221/Tyr1222) antibody	Rb pAb	Hu, Ms	ICC/IF, WB
GTX62195	HER2 (phospho Thr1221/T1222) antibody [EPR1047]	Rb mAb	Hu	WB
GTX50146	HER2 (phospho Tyr1248) antibody	Rb pAb	Hu, Ms, Rat	ICC/IF, IHC, IHC-P, WB



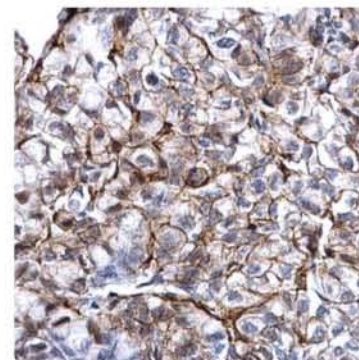
ErbB2 antibody (GTX117479)

IHC-P analysis with ErbB2 antibody on human breast carcinoma.

## FGFR3 &amp; FLT3

Citation

Cat. No.	Product	Host & Clonality	Reactivity	Application
GTX109624	FGFR-3 antibody [C3], C-term	Rb pAb	Hu	ICC/IF, WB
GTX64093	FGFR3 antibody [EPR2304(3)]	Rb mAb	Hu, Ms, Rat	FACS, WB
GTX52732	FGFR3 antibody [6G11]	Ms mAb	Hu	Neut, WB
GTX10649	FGFR3 antibody	Rb pAb	Hu	IHC-P, IP, WB
GTX50518	FLT3 antibody	Rb pAb	Hu	ICC/IF, WB
GTX37505	FLT3 antibody, N-term	Rb pAb	Ms	ICC/IF, WB
GTX79073	FLT3 (phospho Tyr591) antibody	Rb pAb	Hu	ELISA, IHC, IHC-P, WB
GTX36299	FLT3 (phospho Tyr969) antibody [T.602.6]	Rb mAb	Hu, Ms	WB



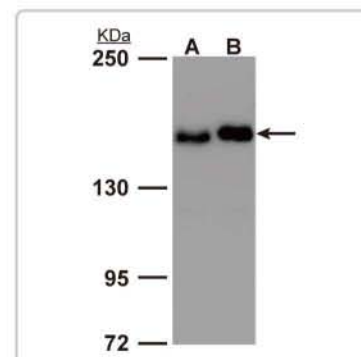
ErbB2(Her2) antibody (GTX100732)

IHC-P analysis with ErbB2 antibody on human breast carcinoma.

## PDGFR

Citation

Cat. No.	Product	Host & Clonality	Reactivity	Application
GTX107903	PDGF Receptor alpha antibody [N2C2], Internal	Rb pAb	Hu, Ms	WB
GTX52457	PDGF Receptor alpha antibody [8A89]	Ms mAb	Hu	IHC, WB
GTX53096	PDGF Receptor alpha antibody [3G28]	Rat mAb	Ms	IHC, WB
GTX62496	PDGF Receptor alpha (phospho Tyr720) antibody [EP2478]	Rb mAb	Hu, Ms, Rat	FACS, WB
GTX107063	PDGF Receptor beta antibody	Rb pAb	Hu, Rat	ICC/IF, IHC-P, WB
GTX61115	PDGF Receptor beta antibody [Y92], C-term	Rb mAb	Hu, Ms, Rat	ICC/IF, IHC-Fr, IHC-P, IP, WB
GTX52458	PDGF Receptor beta antibody [5C37]	Ms mAb	Hu	IHC, WB
GTX53097	PDGF Receptor beta antibody [4C54]	Rat mAb	Ms	IHC, WB
GTX63735	PDGF Receptor beta (phospho Tyr716) antibody [EPR2134]	Rb mAb	Hu, Ms, Rat	IP, WB
GTX61797	PDGF Receptor beta (phospho Tyr740) antibody [EP2135Y]	Rb mAb	Ms, Rat	ICC/IF, WB
GTX78970	PDGF Receptor beta (phospho Tyr751) antibody	Rb pAb	Hu, Ms, Rat	ELISA, IHC, WB
GTX62511	PDGF Receptor beta (phospho Tyr771) antibody [EPR2477]	Rb mAb	Hu, Ms	IP, WB
GTX61782	PDGF Receptor beta (phospho Tyr857) antibody [EP2136Y]	Rb mAb	Ms	WB
GTX62725	PDGF Receptor beta (phospho Tyr1009) antibody [EP2137Y]	Rb mAb	Ms	WB
GTX62447	PDGF Receptor beta (phospho Tyr1021) antibody [EPR2476]	Rb mAb	Ms	FACS, IP, WB



ErbB2 antibody [GT2025] (GTX629808)

WB analysis with ErbB2 antibody on whole cell lysate of (A) MCF-7 cells (B) MDA-MB-231 cells.

**Ret & CCDC6**

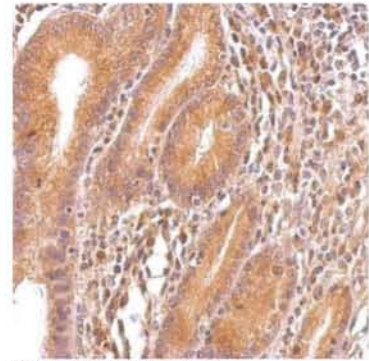
Citation

Cat. No.	Product	Host & Clonality	Reactivity	Application
GTX101059	RET antibody	Rb pAb	Hu	WB
GTX111327	RET antibody [N3C1], Internal	Rb pAb	Hu	WB
GTX62920	Ret antibody [EPR2871], C-term	Rb mAb	Hu, Ms, Rat	ELISA, FACS, ICC/IF, IHC-P, IP, WB
GTX107522	CCDC6 antibody	Rb pAb	Hu	IHC-P, WB
GTX107599	CCDC6 antibody	Rb pAb	Hu	WB

**Trk A, TPM3 & TPR**

Citation

Cat. No.	Product	Host & Clonality	Reactivity	Application
GTX61828	Trk A antibody [EP1058Y]	Rb mAb	Hu, Ms, Rat	FACS, ICC/IF, IHC-P, IP, WB
GTX81329	TrkA antibody	Rb pAb	Hu, Ms	ELISA, FACS, ICC/IF, WB
GTX21445	TrkA (phospho Tyr490) antibody	Rb pAb	Hu, Ms, Rat	ICC/IF, IP, WB
GTX81330	TrkA (phospho Tyr791) antibody	Rb pAb	Hu	ELISA, FACS, IHC-P, WB

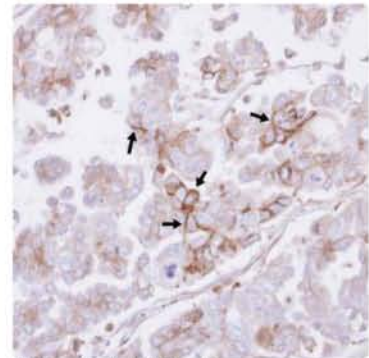


**K-Ras antibody (GTX100527)**  
IHC-P analysis with K-Ras antibody on colon carcinoma.

**Ras-Raf-ERK Signaling****Ras & Neurofibromin**

Citation

Cat. No.	Product	Host & Clonality	Reactivity	Application
GTX100636	K-Ras antibody [N1N3]	Rb pAb	Hu, Rat	ELISA, ICC/IF, IHC-P, IP, WB
GTX100527	K-Ras antibody	Rb pAb	Hu, Ms	ICC/IF, IHC-P, WB
GTX124498	Kras antibody	Rb pAb	Zfsh	WB
GTX116041	H-Ras antibody	Rb pAb	Hu, Rat	ICC/IF, IHC-P, WB
GTX61164	H-Ras antibody [Y132], C-term	Rb mAb	Hu, Ms, Rat	FACS, ICC/IF, IHC, IP, WB
GTX88676	NRAS antibody, Internal	Gt pAb	Hu, Rat	ELISA, IHC, IHC-P, WB
GTX61187	p21/Ras antibody [Y131]	Rb mAb	Hu	ICC/IF, IHC, WB
GTX61430	p21/Ras antibody [EP1125Y], N-term	Rb mAb	Hu, Ms, Rat	FACS, IP, WB

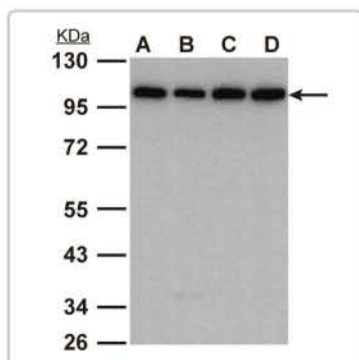


**H-Ras antibody (GTX116041)**  
IHC-P analysis with H-Ras antibody on OVCAR3 xenograft.

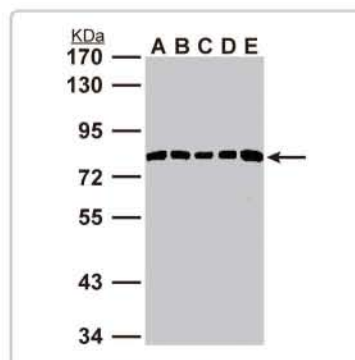
**BRAF**

Citation

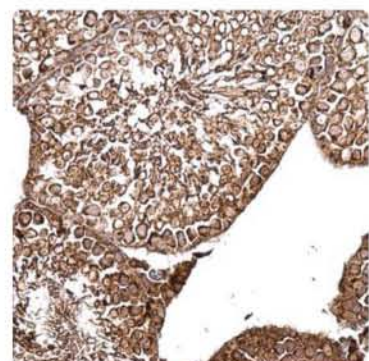
Cat. No.	Product	Host & Clonality	Reactivity	Application
GTX100913	B-Raf antibody [N2C1], Internal	Rb pAb	Hu, Ms, Rat	IHC-P, IP, WB
GTX84809	BRAF antibody [4C11]	Ms mAb	Hu, Dog	IHC, IHC-P, WB
GTX84819	BRAF antibody [5A9]	Ms mAb	Hu, Mk	FACS, ICC/IF, IHC, IHC-P, WB
GTX84808	BRAF antibody [1D4]	Ms mAb	Hu	FACS, ICC/IF, IHC, IHC-P, WB
GTX85596	BRAF (phospho Thr598/Ser601) antibody	Rb pAb	Hu	ICC/IF, IHC-P



**FGFR3 antibody (GTX109624)**  
WB analysis with FGFR3 antibody on whole cell lysate of (A) HeLa S3 cells (B) HepG2 cells (C) Molt-4 cells (D) Raji cells.



**PDGFRα antibody (GTX107903)**  
WB analysis with PDGFRα antibody on whole cell lysate of (A) 293T cells (B) A431 cells (C) H1299 cells (D) HeLa S3 cells (E) HepG2 cells.



**B-Raf antibody [N2C1], Internal (GTX100913)**  
IHC-P analysis with B-Raf antibody on mouse testis.

## Ras-Raf-ERK Signaling

## ERK1 &amp; ERK2

Citation

Cat. No.	Product	Host & Clonality	Reactivity	Application
GTX15780	ERK1 antibody [12D11]	Ms mAb	Hu, Ms, NHuPm	ICC/IF, IHC, WB, ChIP assay
GTX82557	ERK1 antibody [E19]	Ms mAb	Hu	IP, WB
GTX89563	ERK1 / MAPK3 antibody, N-term	Gt pAb	Hu	ELISA, WB
<b>C</b> GTX113094	ERK2 antibody [N2C3]	Rb pAb	Hu, Ms, Pig, Rat	IHC-P, IP, WB
GTX104613	ERK2 antibody [N1], N-term	Rb pAb	Hu	WB
GTX89615	ERK2 / MAPK1 antibody, Internal	Gt pAb	Hu	ELISA, WB
GTX14018	ERK2 antibody	Chk pAb	Hu, Ms, Rat	WB
GTX61803	Erk1 (phospho Y204) / Erk2 (phospho Y187) antibody [EP197Y]	Rb mAb	Hu, Ms, Rat	IP, WB
GTX61126	ERK1 (phospho Thr202/Tyr204) / ERK2 (phospho Thr185/Tyr187) antibody [E337]	Rb mAb	Hu	FACS, ICC/IF, IHC-P, WB
<b>C</b> GTX24819	ERK1 + ERK2 (phospho Thr185+Thr202+Tyr204+Tyr187) antibody	Rb pAb	Hu	WB

## PI3K-Akt Signaling

## PI3K signaling

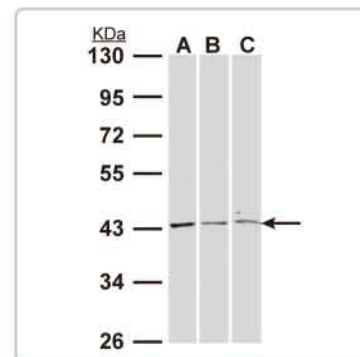
Citation

Cat. No.	Product	Host & Clonality	Reactivity	Application
GTX100462	PI3 kinase p110 alpha antibody	Rb pAb	Hu, Ms	IHC-P, WB
<b>C</b> GTX111173	PI3K p110 beta antibody [N3C2], Internal	Rb pAb	Hu, Ms, Rat	ICC/IF, WB
GTX104639	PI3 kinase p110 gamma antibody [C3], C-term	Rb pAb	Hu	IHC-P, WB
<b>C</b> GTX111593	PI3K p85 beta antibody [N3C3]	Rb pAb	Hu	WB
GTX111689	PI3K p85 beta antibody [N3C3-2]	Rb pAb	Hu	WB
GTX107893	PI 3 Kinase Class 3 antibody [C1C3]	Rb pAb	Hu	WB
GTX107572	VPS34 antibody	Rb pAb	Hu	ICC/IF, WB
GTX25459	PI 3 Kinase 4 antibody	Rb pAb	Hu	ELISA, IHC-F, IHC-P, WB
GTX104640	PI3K C2 alpha antibody [C3], C-term	Rb pAb	Hu	ICC/IF, IHC-P, WB
GTX63620	PI3-kinase p150 subunit antibody [EPR5303(2)]	Rb mAb	Hu, Ms, Rat	FACS, ICC/IF, IHC-P, WB
GTX81224	PIK3R1 antibody, Y580	Rb pAb	Hu	IHC, IHC-P, WB
GTX107779	PIK3R3 antibody	Rb pAb	Hu, Rat	IHC-P, WB
GTX107656	PIK3R4 antibody [N1N2], N-term	Rb pAb	Hu, Ms	ICC/IF, IHC-P, WB
GTX50858	PI3K p85/p55 (phospho Tyr467/199) antibody	Rb pAb	Hu, Ms, Rat	WB

## AKT

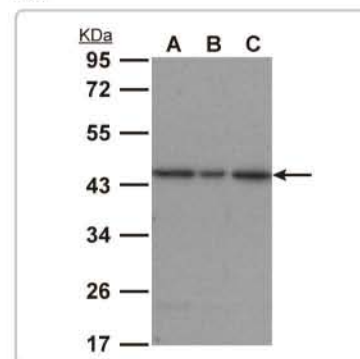
Citation

Cat. No.	Product	Host & Clonality	Reactivity	Application
<b>C</b> GTX121937	AKT antibody [N3C2], Internal	Rb pAb	Hu, Ms, Rat	ICC/IF, IHC, IHC-P, WB
<b>C</b> GTX13990	AKT antibody	Chk pAb	Hu, Ms, Cow, Rat, Xi	WB
GTX49160	AKT antibody [3B11-G8-B1]	Ms mAb	Hu, Ms, Rat	IP, WB
GTX128414	AKT (phospho Ser473/474/472) antibody	Rb pAb	Hu	IP, WB
<b>C</b> GTX110613	AKT1 antibody	Rb pAb	Hu, Ms	ICC/IF, IHC-P, IP, WB
GTX101074	AKT1 antibody [N3C3]	Rb pAb	Hu	ICC/IF, IHC-P, WB
GTX101073	AKT1 antibody	Rb pAb	Hu, Ms	ICC/IF, IHC-P, WB
<b>C</b> GTX28933	AKT (phospho Thr308) antibody	Rb pAb	Hu, Ms	ELISA, WB
GTX62621	AKT1 (phospho Thr450) antibody [EPR4157]	Rb mAb	Hu, Ms, Rat	IHC-P, IP, WB
GTX128457	AKT2 antibody	Rb pAb	Ms, Rat	WB
GTX111612	AKT2 antibody	Rb pAb	Hu	ICC/IF, IHC-P, WB
GTX128458	AKT2 antibody	Rb pAb	Hu	WB
GTX113311	AKT3 antibody [N2C2], Internal	Rb pAb	Hu, Ms, Rat	ICC/IF, WB
GTX113312	AKT3 antibody	Rb pAb	Hu, Ms	ICC/IF, IHC-P, WB
GTX127923	Akt3 antibody	Rb pAb	Zfsh	IHC-Wm



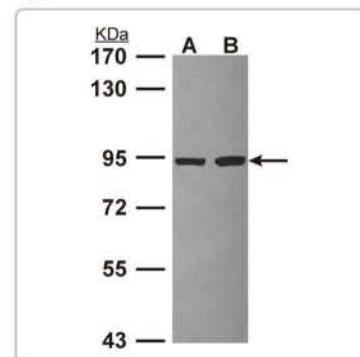
## ERK1 antibody [N1C1] (GTX102769)

WB analysis with ERK1 antibody on whole cell lysates of (A) A431 cells (B) HepG2 cells (C) Molt-4 cells.



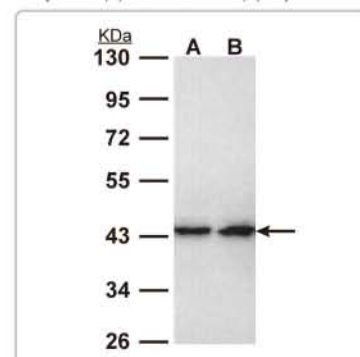
## ERK2 antibody (GTX104613)

WB analysis with ERK2 antibody on whole cell lysates of (A) A431 cells (B) H1299 cells (C) HepG2 cells.



## PI3K p85 beta antibody [N3C3-2] (GTX111689)

WB analysis with PI3K p85 beta antibody on whole cell lysate of (A) JurKat cells and (B) Raji cells.



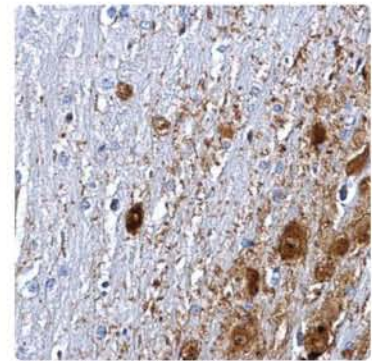
## ERK2 antibody [N2C3] (GTX113094)

WB analysis with ERK2 antibody on whole cell lysate of (A) H1299 cells (B) HeLa cells.

## PTEN

Citation

Cat. No.	Product	Host & Clonality	Reactivity	Application
● GTX101025	PTEN antibody	Rb pAb	Hu, Ms	ICC/IF, IHC-P, WB
GTX70210	PTEN antibody	Ms pAb	Hu	WB
GTX83304	PTEN antibody [1B8]	Ms mAb	Hu, Ms	ELISA, FACS, ICC/IF, WB
GTX16125	PTEN antibody	Shp pAb	Hu	WB
GTX61730	PTEN (phospho Ser380) antibody [EP2138Y]	Rb mAb	Hu, Ms, Rat	ICC/IF, IHC-P, WB
● GTX61780	PTEN (phospho Thr366/pS370) antibody [EP229]	Rb mAb	Hu	ICC/IF, IHC-P, IP, WB
GTX50130	PTEN (phospho Ser380/Thr382/Thr383) antibody	Rb pAb	Hu, Ms, Rat	ICC/IF, IHC, IHC-P, WB

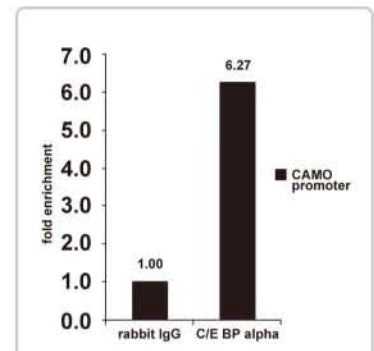


**PTEN antibody (GTX101025)**  
IHC-P analysis with PTEN antibody on rat middle brain.

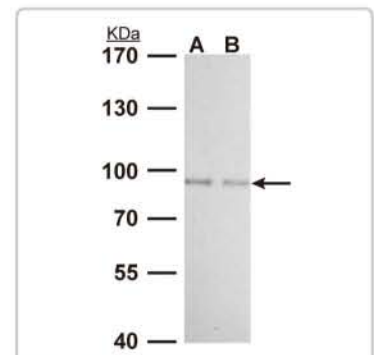
## Transcription Factors

Citation

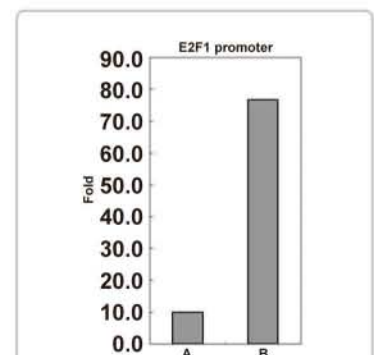
Cat. No.	Product	Host & Clonality	Reactivity	Application
GTX100674	C/EBP alpha antibody [N1], N-term	Rb pAb	Hu	IP, WB, ChIP assay
GTX61330	C/EBP alpha antibody [EP708Y]	Rb mAb	Hu	FACS, ICC/IF, WB
GTX15047	C/EBP alpha antibody [15C8]	Ms mAb	Hu, Ms, Rat	ICC/IF, IP, WB
● GTX27963	c-Fos antibody	Rb pAb	Hu, Ms, Rat	IHC, IHC-P, IP, WB
● GTX63081	c-Fos antibody [EPR883(2)]	Rb mAb	Hu, Ms, Rat	FACS, WB
GTX17933	c-Fos (phospho Thr232) antibody	Rb pAb	Hu, Ms, Rat	ICC/IF, WB
● GTX101135	c-Jun antibody [C1C3]	Rb pAb	Hu	WB
GTX14046	c-Jun antibody	Chk Ab	Hu, Ms, Rat	WB
GTX61170	c-Jun (phospho Ser63) antibody [Y172]	Rb mAb	Hu, Ms, Rat	ICC/IF, IHC-P, WB
GTX62162	c-Jun (phospho Thr91) antibody [EPR2236]	Rb mAb	Hu, Ms, Rat	IP, WB
GTX62161	c-Jun (phospho Thr93) antibody [EPR2237]	Rb mAb	Hu, Ms	IP, WB
GTX103436	c-Myc antibody	Rb pAb	Hu, Ms	IP, WB, ChIP assay
GTX84066	c-Myc antibody [1A6]	Ms mAb	Hu	FACS, ICC/IF, IHC-P, WB
● GTX20056	c-Myc antibody [9E11]	Ms mAb	Hu, Ms	ELISA, IHC-Fr, IHC-P, IP, WB, ChIP assay
● GTX75953	c-Myc antibody [9E10]	Ms mAb	Hu	ELISA, FACS, IHC-Fr, IHC-P, IP, WB
GTX61077	c-Myc (phospho Thr58/pS62) antibody [E203]	Rb mAb	Hu, Ms	FACS, ICC/IF, IP, WB
GTX70187	FKHR antibody [14E4]	Ms mAb	Hu	ICC/IF, WB
GTX70193	FKHR antibody [7H3]	Ms mAb	Hu	ICC/IF, IHC-P, WB
GTX110724	FOXO1 antibody	Rb pAb	Hu	WB
GTX60558	FOXO1 antibody [3B6]	Ms mAb	Hu, Ms	ELISA, ICC/IF, IHC, IHC-P, WB
● GTX100277	FOXO3A antibody [C3], C-term	Rb pAb	Hu, Ms	ICC/IF, IHC-P, IP, WB
GTX17026	FOXO3A / FOXO3 / FKHL1 antibody, C-term	Gt pAb	Hu	ELISA, WB
GTX109025	FOXO4 antibody	Rb pAb	Hu	ICC/IF, IHC-P, WB
GTX50197	FOXO4 (phospho Ser197) antibody	Rb pAb	Hu, Ms, Rat	ICC/IF, IHC, IHC-P, WB
GTX85625	FOXO4 (phospho Ser197) antibody	Rb pAb	Hu, Ms, Rat	IHC-P, WB
GTX113492	MAX antibody	Rb pAb	Hu	IP, WB
GTX89997	MAX antibody, C-term	Gt pAb	Hu, Ms, Rat	ELISA, WB
GTX113776	MITF antibody [N2C1], Internal	Rb pAb	Hu	WB
GTX13703	MITF antibody [21D1418]	Ms mAb	Hu, Ms, Cow, Dog, Rat, Xi	WB
GTX12039	MITF antibody [C5]	Ms mAb	Hu, Ms, Rat	GSA, IHC-Fr, IHC-P, IP, WB
GTX82132	MITF antibody	Chk Ab	Hu	WB
GTX128263	Mitfa antibody	Rb pAb	Zfsh	WB, IHC-Wm
GTX129229	Nkx3.1 antibody	Rb pAb	Hu	WB
GTX83288	NKX3A antibody [4H4]	Ms mAb	Hu	ELISA, FACS, IHC, IHC-P, WB
GTX101583	PAX8 antibody	Rb pAb	Hu	ICC/IF, IHC-P, IP, WB, ChIP assay
GTX101603	PAX8 antibody	Rb pAb	Hu	ICC/IF, IHC-P
GTX82756	PAX8 antibody [2D4]	Ms mAb	Hu	ELISA, WB



**C/EBP alpha antibody [N1], N-term (GTX100674)**  
ChIP analysis with C/EBP alpha antibody on A549 cell.



**FOXO1 antibody (GTX110724)**  
WB analysis with FOXO1 antibody on whole cell lysates of (A) 293T cells (B) A431 cells.



**PAX8 antibody (GTX101583)**  
ChIP analysis with PAX8 antibody on whole cell lysates of 293T cells.

## Transcription Factors

Citation

Cat. No.	Product	Host & Clonality	Reactivity	Application
GTX13611	PAX8 antibody, N-term	Gt pAb	Hu	ELISA, IHC, IHC-P, WB
GTX112996	PML antibody [N1N2], N-term	Rb pAb	Hu	WB
GTX63898	PML Phospho (phospho Ser518) antibody [EPR8151]	Rb mAb	Hu, Ms	IHC, IHC-P, WB
GTX101581	PU.1 antibody [N1C1]	Rb pAb	Hu	WB
GTX62055	PU.1 antibody [EPR3159Y]	Rb mAb	Hu	FACS, ICC/IF, IHC-P, WB
GTX88620	PU.1 antibody, Internal	Gt pAb	Hu	ELISA, WB
GTX60402	RUNX1 antibody [5A1]	Ms mAb	Hu	ELISA, ICC/IF, WB
GTX50779	RUNX1 antibody	Rb pAb	Hu, Ms, Rat	WB
GTX62357	RUNX1 / AML1 + RUNX3 + RUNX2 [EPR3098] antibody	Rb mAb	Hu, Ms	IHC-P, WB
GTX77822	EV11 antibody	Rb pAb	Hu	IHC, WB
GTX23792	EV11 antibody [47AT612.84.88]	Ms mAb	Hu, Ms	ELISA, WB
GTX88191	EV11 antibody, Internal	Gt pAb	Hu	ELISA, WB

## Nuclear Receptors

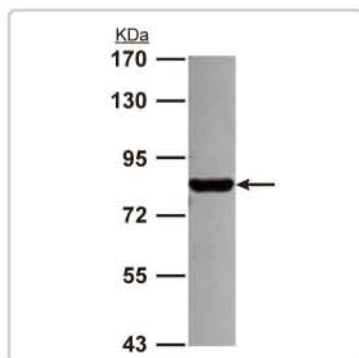
Citation

Cat. No.	Product	Host & Clonality	Reactivity	Application
Ⓢ GTX19481	PPAR gamma antibody	Rb pAb	Hu, Ms, Cow, Dog, Pig, Rat, Hm	IHC-P, WB
GTX83197	PPAR gamma antibody [3A4A9, 1E6A1]	Ms mAb	Hu	ELISA, WB
GTX82104	PPAR gamma antibody	Chk pAb	Hu, Ms, Rat	WB
GTX113828	Retinoid X Receptor alpha antibody	Rb pAb	Hu	IP, WB
GTX113829	Retinoid X Receptor alpha antibody	Rb pAb	Hu, Ms	ICC/IF, IHC-P
GTX113544	Retinoid X Receptor beta antibody	Rb pAb	Hu, Ms	IHC-P, WB
GTX104798	Retinoid X Receptor beta antibody [N1N2], N-term	Rb pAb	Hu	WB
Ⓢ GTX89670	Retinoid X Receptor beta antibody, Internal	Gt pAb	Hu	ELISA, WB
Ⓢ GTX104799	Retinoid X Receptor gamma antibody	Rb pAb	Hu	WB
Ⓢ GTX101061	Retinoic Acid Receptor alpha antibody [N3C3]	Rb pAb	Hu	WB
GTX30167	Retinoic Acid Receptor alpha antibody [763]	Ms mAb	Hu, Rat	WB
GTX124492	Raraa antibody	Rb pAb	Zfish	IHC-P, WB
GTX100759	Retinoic Acid Receptor beta antibody	Rb pAb	Hu	WB
GTX30168	Retinoic Acid Receptor beta antibody [336]	Ms mAb	Hu, Rat	WB
GTX100056	Androgen Receptor antibody [N1], N-term	Rb pAb	Hu, Ms	ICC/IF, IHC-P, WB
GTX83309	Androgen Receptor antibody [2H8]	Ms mAb	Hu	ELISA, IHC, IHC-P, WB
GTX29474	Androgen Receptor antibody [AR 441]	Ms mAb	Hu	IHC, IHC-Fr, IHC-P, WB
GTX22742	Androgen Receptor antibody [AN1-15]	Rat mAb	Hu, Ms, Rat	GSA, ICC/IF, IHC, IHC-Fr, IHC-P, IP, WB

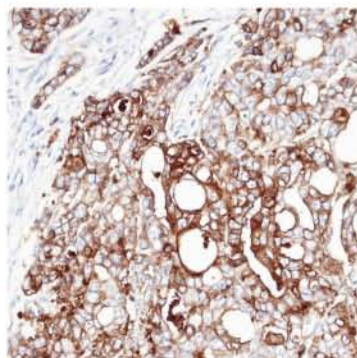


## Recently published using GeneTex products?

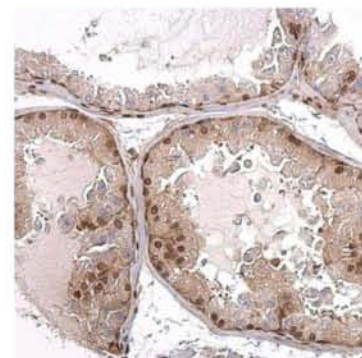
GeneTex is proud to support the work of the world's leading researchers. Please share your **publications** with the corresponding GeneTex catalog numbers and receive a gift.



**PML antibody (GTX112996)**  
WB analysis with PML antibody on whole cell lysate of A549 cells.



**PU.1 antibody (GTX101581)**  
IHC-P analysis with PU.1 antibody on NCI-N87 xenograft.



**Androgen Receptor antibody [N1], N-term (GTX100056)**  
IHC-P analysis with Androgen Receptor antibody on mouse prostate.

# Tumor Markers

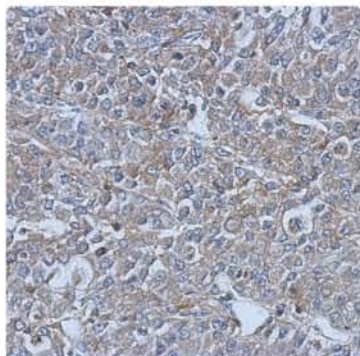
*Tumor markers are substances that are elevated in blood, urine or tissues when cancer is present. Most tumor markers are proteins that are produced by either cancer cells or other cells in response to cancer. The elevation in expression of these markers make them good tools for screening cancers, monitoring cancer survival after treatment and diagnosing certain tumor types.*

© Citation

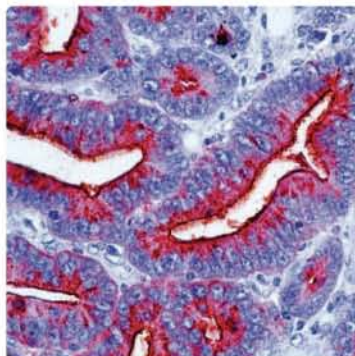
	Cat. No.	Product	Host & Clonality	Reactivity	Application
<b>α-Fetoprotein</b>	GTX84954	AFP antibody [2A9]	Ms mAb	Hu, Dog, Mk	FACS, ICC/IF, IHC, IHC-P, WB
	GTX61379	Alpha-fetoprotein antibody, C-term	Rb pAb	Hu, Ms, Rat	IHC-P, WB
	GTX61406	AFP antibody [EP1017Y], C-term	Rb mAb	Hu	IHC-P, IP, WB
	GTX63974	AFP antibody [EPAPP61]	Rb mAb	Hu	FACS, ICC/IF, IHC-P, IP, WB
<b>Calcitonin</b>	GTX79412	Calcitonin antibody [SP17]	Rb mAb	Hu	IHC, IHC-P
	GTX79426	Calcitonin antibody [SP17] (ready-to-use)	Rb mAb	Hu	IHC, IHC-P
	GTX14818	Calcitonin antibody [13f2]	Ms mAb	Hu	EIA, ELISA, WB
	© GTX28137	Calcitonin antibody	Rb pAb	Hu, Rb	IHC-Fr, IHC-P
	GTX62338	Calcitonin antibody [EPR68(2)]	Rb mAb	Hu, Ms, Rat	IHC-P
	GTX28553	Calcitonin antibody	Rb pAb	Hu, Ms, Rat	ELISA, ICC/IF, IP, WB
<b>MUC1</b>	GTX100459	MUC1 antibody	Rb pAb	Hu	ICC/IF, IHC-P, IP, WB
	GTX10117	MUC1 antibody [M10H6]	Ms mAb	Hu	ELISA, ICC/IF, IHC
	GTX82408	MUC1 antibody	Chk pAb	Hu, Ms, Rat	IHC, IHC-P, WB
	GTX61412	MUC1 isoform 7 antibody [EP1024Y], N-term	Rb mAb	Hu, Ms, Rat	FACS, IHC-Fr, IHC-P, IP, WB
<b>CA19-9</b>	© GTX75541	CA19-9 antibody [1116-NS-19-9]	Ms mAb	Hu	FACS, IHC-Fr, IHC-P
	GTX44291	CA19-9 antibody [B627M]	Ms mAb	Hu	ELISA, IHC-Fr, IHC-P, IRMA
<b>TAG72</b>	GTX73796	TAG72 antibody [CC49]	Ms mAb	Hu, Ms	IHC-P
	GTX20691	TAG72 antibody [B72.3]	Ms mAb	Hu	IHC, IHC-P
	GTX17361	TAG72 antibody [O.N.561]	Ms mAb	Hu, Cow, Rat, Hm	FACS, IHC-P, IP
<b>CA125</b>	© GTX21107	CA125 antibody [X75]	Ms mAb	Hu	FACS, IHC-Fr, IHC-P, WB
	GTX62369	CA125 antibody [EPR1020(2)]	Rb mAb	Hu	ICC/IF, IHC, IHC-P, WB
<b>MUC16</b>	© GTX10029	MUC16 antibody [X75]	Ms mAb	Hu	ELISA, FACS, IHC-P, WB
	© GTX20697	MUC16 antibody [OV185:1]	Ms mAb	Hu	IHC-P
<b>Carcino embryonic antigen</b>	GTX17254	CEA antibody [Col-1]	Ms mAb	Hu	IHC-P, IP, WB
	GTX60388	CEA antibody [3G12]	Ms mAb	Hu	ELISA, ICC/IF, WB
	GTX10719	CEA antibody [CEA-9]	Ms mAb	Hu	IHC-P, WB
<b>Human chorionic gonadotropin</b>	GTX20400	CG antibody [HCG1]	Ms mAb	Hu	ELISA, FACS, ICC/IF, RIA, RID
	GTX80394	HCG beta antibody [WM16/71]	Ms mAb	Hu	EIA, RIA, WB
	GTX62329	CGB antibody [EPR3376]	Rb mAb	Hu	WB
	GTX29376	CG antibody	Rb pAb	Hu	IHC-Fr, IHC-P
<b>Chromogranin A (Cga)</b>	GTX113165	Chromogranin A antibody [N1C1]	Rb pAb	Hu	WB
	GTX61933	Chromogranin A antibody [EP1030Y], N-term	Rb mAb	Hu	FACS, ICC/IF, IHC, IHC-P, WB
	GTX89334	Chromogranin A precursor antibody, Internal	Gt pAb	Hu	ELISA, WB
<b>Estrogen Receptor (ER)</b>	© GTX70171	Estrogen Receptor alpha antibody [1F3]	Ms mAb	Hu	FACS, IHC-Fr, IP, WB
	GTX100634	Estrogen Receptor alpha antibody [N2], N-term	Rb pAb	Hu	ICC/IF, IHC-P
	GTX50138	Estrogen Receptor alpha (phospho Ser106) antibody	Rb pAb	Hu, Ms	ICC/IF, IHC, IHC-P, WB
	GTX50139	Estrogen Receptor alpha (phospho Ser118) antibody	Rb pAb	Hu, Ms	ICC/IF, IHC, IHC-P, WB

	Cat. No.	Product	Host & Clonality	Reactivity	Application
Estrogen Receptor (ER)	GTX50140	Estrogen Receptor alpha (phospho Ser167) antibody	Rb pAb	Hu, Ms	FACS, ICC/IF, IHC, IHC-P, WB
	<b>C</b> GTX70174	Estrogen Receptor beta antibody [14C8]	Ms mAb	Hu, Ms	FACS, ICC/IF, IHC, IHC-P, WB, ChIP assay
	GTX70176	Estrogen Receptor beta antibody [4D2]	Ms mAb	Hu	IHC-P, WB
	<b>C</b> GTX70178	Estrogen Receptor beta antibody [6A12]	Ms mAb	Hu	ICC/IF, IHC, WB, ChIP assay
	<b>C</b> GTX70180	Estrogen Receptor beta antibody [6B12]	Ms mAb	Hu	IHC, WB
	<b>C</b> GTX70182	Estrogen Receptor beta antibody [7B10.7]	Ms mAb	Hu	IP, WB, ChIP assay
	<b>C</b> GTX110607	Estrogen Receptor beta antibody [N2C2], Internal	Rb pAb	Hu, Ms	WB
	GTX119720	Estrogen Receptor beta antibody [C3-2], C-term	Rb pAb	Hu	ICC/IF, IHC-P, WB
	GTX119721	Estrogen Receptor beta antibody	Rb pAb	Hu	IHC-P, WB
	GTX62324	Estrogen Receptor beta antibody [EPR3777], N-term	Rb mAb	Hu	ICC/IF, IP, WB
β2-Microglobulin (B2M)	GTX112815	beta 2 Microglobulin antibody	Rb pAb	Hu	IHC-P, IP, WB
	GTX101314	beta 2 Microglobulin antibody [N1C3]	Rb pAb	Hu	WB
	GTX20759	beta 2 Microglobulin antibody [B2M-01]	Ms mAb	Hu	ELISA, FACS, ICC/IF, IP, RIA, WB
	GTX80227	beta 2 microglobulin antibody [B2M-02] (PE)	Ms mAb	Hu, Pig	ELISA, FACS, IHC-P, WB
ENO2/NSE	GTX127323	B2m antibody	Rb pAb	Zfish	WB
	GTX113428	ENO2 antibody [C1C3]	Rb pAb	Hu, Ms	WB
	GTX101553	ENO2 antibody [N1C1]	Rb pAb	Hu, Ms	IHC-P, WB
	GTX72911	NSE antibody (ready-to-use)	Rb pAb	Hu, Dog, Pig, Rat, Gpig, Hrs, Rb, Shp	IHC-Fr, IHC-P
	GTX124345	Eno2 antibody	Rb pAb	Zfish	IHC-P, WB
	<b>C</b> GTX10169	NSE antibody [5A4]	Ms mAb	Hu	ELISA, IHC-P, WB
PAI-1	GTX85462	NSE antibody	Chk pAb	Hu, Ms	ICC/IF, IHC, WB
	GTX100550	PAI-1 antibody [N1C2]	Rb pAb	Hu, Ms	IHC-P, WB
	GTX79711	PAI-1 antibody [631-3C3-11]	Ms mAb	Hu, Pig, Rat, Rb	ELISA, WB
	GTX89568	PAI1 / SERPINE1 antibody, Internal	Gt pAb	Hu	ELISA, IHC, WB
Prostatic Acid Phosphatase	GTX79732	PAI-1 antibody	Shp pAb	Hu	ELISA, IHC-Fr, IHC-P, WB
	GTX114004	Prostatic Acid Phosphatase antibody [N3C3]	Rb pAb	Hu	WB
	GTX62762	Prostatic Acid Phosphatase antibody [EPR4067]	Rb mAb	Hu, Ms	ICC/IF, IHC-P, IP, WB
	GTX85463	PAP antibody	Chk pAb	Hu, Ms	ICC/IF, IHC
Progesterone Receptor	GTX88063	ACPP antibody, Internal	Gt pAb	Hu	ELISA, IHC-P, WB
	GTX116051	Progesterone Receptor antibody [N1], N-term	Rb pAb	Hu	ICC/IF, IHC-P, WB
	GTX118988	Progesterone Receptor antibody [C1], Internal	Rb pAb	Hu	ICC/IF, WB
	GTX70227	Progesterone Receptor antibody [4D8]	Ms mAb	Hu	IHC, WB
	GTX50141	Progesterone Receptor (phospho Ser190) antibody	Rb pAb	Hu	ICC/IF, IHC, IHC-P, WB
	GTX61842	Progesterone Receptor (phospho Ser190) antibody [EP1516Y]	Rb mAb	Hu	ICC/IF, IHC-P, IP, WB
	GTX13878	Progesterone Receptor (phospho Ser294) antibody	Rb pAb	Hu	Dot, WB
	GTX118987	Progesterone Receptor (phospho Ser554) antibody	Rb pAb	Hu	ICC/IF, IHC-P, IP, WB
Prostate-specific Antigen (PSA)	GTX100054	PSA antibody [C2C3], C-term	Rb pAb	Hu	IHC-P
	<b>C</b> GTX72905	PSA antibody	Rb pAb	Hu	ELISA, IHC, IHC-Fr, IHC-P
	GTX20403	PSA antibody [PSA1]	Ms mAb	Hu	IHC-Fr, RIA, WB
	GTX83052	PSA (KLK3) antibody [5A11E9,5A11E2]	Ms mAb	Hu	ELISA, FACS, IHC, IHC-P, WB
Prosaposin	GTX75550	PSA antibody [ER-PR8]	Ms mAb	Hu	IHC-Fr, IHC-P
	GTX101064	PSAP antibody [N1N3]	Rb pAb	Hu	IHC-P, WB
	GTX101065	PSAP antibody [N3C3]	Rb pAb	Hu	IHC-P
Prostate-specific Membrane Antigen (PSMA)	GTX60673	PSAP antibody [4D5F4]	Ms mAb	Hu	ELISA, FACS, ICC/IF, IHC, IHC-P, WB
	<b>C</b> GTX19071	PSMA antibody [YPSMA-1]	Ms mAb	Hu	ELISA, ICC/IF, IHC-Fr, IHC-P, WB
	GTX62126	PSMA antibody [EP3253], N-term	Rb mAb	Hu	FACS, IP, WB
	GTX63637	PSMA antibody [EPR6253]	Rb mAb	Hu	IHC-P, IP, WB
	GTX62126	PSMA antibody [EP3253], N-term	Rb mAb	Hu	FACS, IP, WB
	GTX80151	GCPII antibody [GCP-04]	Ms mAb	Hu, Pig, Rat	ID, ICC/IF, IHC, IHC-P, WB
S100	GTX80150	GCPII antibody [GCP-05] (PE)	Ms mAb	Hu	FACS, ICC/IF, IP
	GTX28330	S100 antibody [8B10]	Ms mAb	Hu	EIA, ELISA, IHC, IHC-P, WB
	GTX10203	S100 antibody [6G1]	Ms mAb	Hu	ELISA, IA, Puri, WB
	GTX83273	S100A1 antibody [2C8B8, 2C8E8, 3C8D8]	Ms mAb	Hu	ELISA, IHC, IHC-P, WB
Thyroglobulin	GTX63376	S100A1 antibody [EPR5251]	Rb mAb	Hu, Ms, Rat	FACS, ICC/IF, IP, WB
	<b>C</b> GTX73492	Thyroglobulin antibody	Rb pAb	Hu	ELISA, IHC
	GTX74331	Thyroglobulin antibody (ready-to-use)	Rb pAb	Hu, Rb	IHC-Fr, IHC-P
	GTX62220	Thyroglobulin antibody [EPR3614]	Rb mAb	Hu	ICC/IF, IHC-P, IP, WB
	<b>C</b> GTX21984	Thyroglobulin antibody [5F9]	Ms mAb	Hu, Cow	ELISA
Urokinase (u-PA)	GTX100465	Urokinase (u-PA) antibody	Rb pAb	Hu	IHC-P, WB
	GTX11747	Urokinase (u-PA) antibody	Rb pAb	Hu	IHC-P, WB
	GTX79572	uPA antibody [H77A1]	Ms mAb	Ms, Rat	ELISA, IHC-P, WB
	GTX89445	Plasminogen Activator (u-PA)/ PLAU antibody, C-term	Gt pAb	Hu	ELISA, WB
	GTX79593	uPA antibody	Shp pAb	Ms, Rat	ELISA, WB
GTX79588	uPA antibody (Biotin)	Shp pAb	Ms, Rat	ELISA, WB	

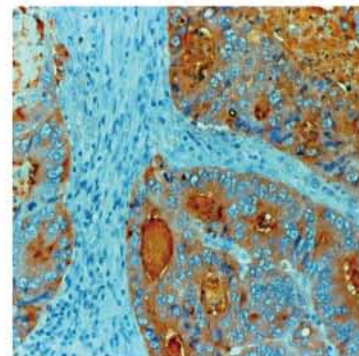
# Tumor Markers



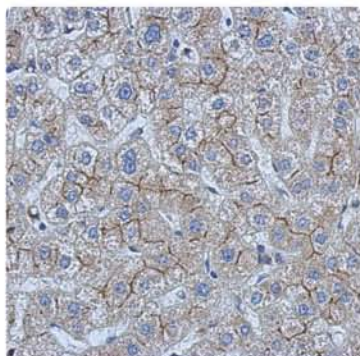
**$\beta$ 2-Microglobulin antibody (GTX112815)**  
IHC-P analysis with  $\beta$ 2-Microglobulin antibody on HeLa xenograft.



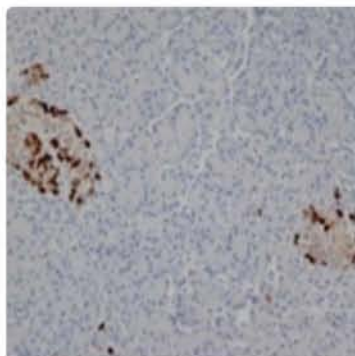
**CA72.4 / TAG72 antibody [B72.3] (GTX20691)**  
IHC-P analysis with CA72.4/TAG72 antibody on human colon carcinoma.



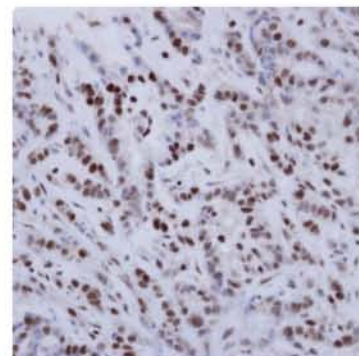
**CEA antibody [Col-1] (GTX17254)**  
IHC-P analysis with CEA antibody on human colon carcinoma.



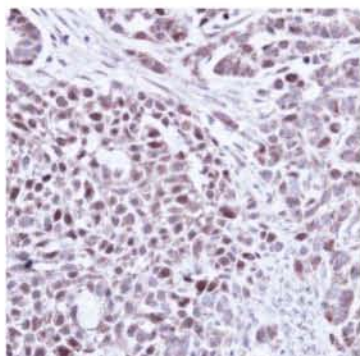
**CEA antibody (GTX113161)**  
IHC-P analysis with CEA antibody on hepatoma tissue.



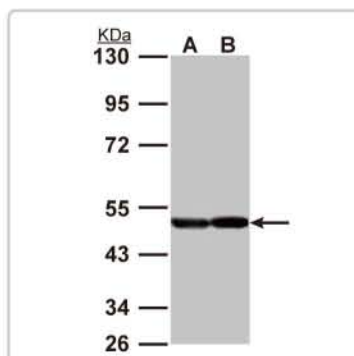
**Chromogranin A antibody [PHE5] (GTX41686)**  
IHC-P analysis with Chromogranin A antibody on human pancreas.



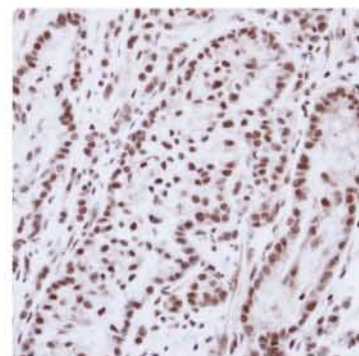
**ER  $\alpha$  antibody (GTX100634)**  
IHC-P analysis with ER  $\alpha$  antibody on A549 xenograft.



**ER  $\beta$  antibody (GTX110607)**  
IHC-P analysis with ER  $\beta$  antibody on A549 xenograft.



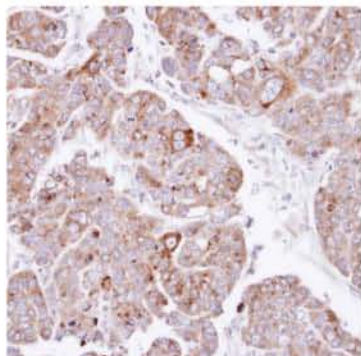
**NSE antibody (GTX101553)**  
WB analysis with NSE antibody on whole cell lysates of (A) A431 cells (B) H1299 cells.



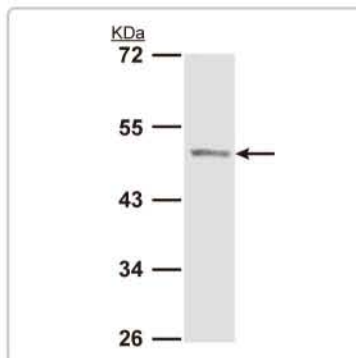
**PR antibody (GTX116051)**  
IHC-P analysis with PR antibody on A549 xenograft.



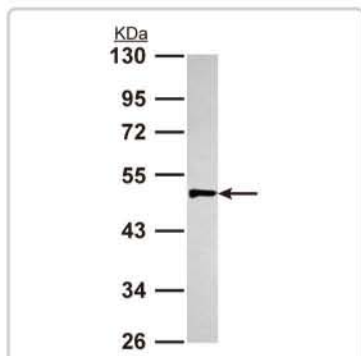
# Tumor Markers



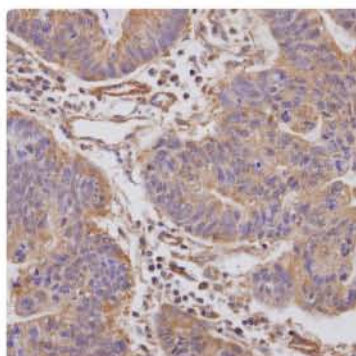
**Prosaposin antibody (GTX101064)**  
IHC-P analysis with Prosaposin antibody on NCIN87 xenograft.



**PAP antibody (GTX114004)**  
WB analysis with PAP antibody on whole cell lysate of Molt-4 cells.



**uPA antibody (GTX100465)**  
WB analysis with uPA antibody on whole cell lysate of HepG2 cells.



**PAI-1 antibody (GTX100550)**  
IHC-P analysis with PAI-1 antibody on gastric cancer.



## Share your results with GeneTex!

Do you have images in the following applications: confocal immunofluorescence, immunohistochemistry, immunoprecipitation, chromatin-immunoprecipitation or other images using GeneTex products? Share your **results** with GeneTex and receive a gift. We will also post your image on our website with a citation.



# Quality Antibodies Quality Results

# Human Tissue Samples

Lysate		Citation	
Cat. No.	Product	Host & Clonality	Application
GTx27918	Human Brain Normal tissue lysate	Human	WB
GTx24664	Human Brain (Fetal Normal) tissue lysate	Human	ELISA, IP, WB
GTx27925	Human brain tumor tissue lysate	Human	WB
GTx24010	Human breast normal tissue lysate (paired GTx24011)	Human	WB
GTx24011	Human breast tumor tissue lysate	Human	WB
GTx22692	Human Breast Tumor tissue lysate Pair (Normal Tissue and Primary Tumor)	Human	ELISA, IP, WB
GTx22696	Human Breast Tumor tissue lysate Pair (Primary and Metastatic)	Human	ELISA, IP, WB
GTx24008	Human bladder normal tissue lysate (paired GTx24009)	Human	WB
GTx24009	Human bladder tumor tissue lysate (paired GTx24008)	Human	WB
GTx27928	Human colon normal tissue lysate	Human	WB
GTx27929	Human colon tumor tissue lysate	Human	WB
GTx22690	Human Colon Tumor tissue lysate Pair (Normal Tissue and Primary Tumor)	Human	ELISA, IP, WB
GTx22691	Human Colon Tumor tissue lysate Pair (Primary and Metastatic)	Human	ELISA, IP, WB
GTx15358	Human Duodenum (Normal) tissue lysate	Human	WB
GTx22627	Human Duodenum (Fetal Normal) tissue Lysate	Human	ELISA, IP, WB
GTx15378	Human duodenum (Tumor) tissue lysate	Human	WB
GTx22626	Human Esophagus (Fetal Normal) tissue Lysate	Human	ELISA, IP, WB
GTx15359	Human Esophagus (Normal) tissue lysate	Human	ELISA, IHC-P, WB
GTx15379	Human esophagus (Tumor) tissue lysate	Human	WB
GTx27923	Human small intestine normal tissue lysate	Human	WB
GTx24530	Human Small intestine (Fetal Normal) tissue lysate	Human	ELISA, IP, WB
GTx15387	Human Small Intestine (Tumor) tissue lysate	Human	ELISA, IHC-P, WB
GTx24016	Human stomach normal tissue lysate (paired GTx24017)	Human	WB
GTx24017	Human stomach tumor tissue lysate (paired GTx24016)	Human	WB
GTx22666	Human Stomach Tumor tissue lysate Pair (Normal Tissue and Primary Tumor)	Human	ELISA, IP, WB
GTx22667	Human Stomach Tumor tissue lysate Pair (Primary and Metastatic)	Human	ELISA, IP, WB
GTx24012	Human kidney normal tissue lysate (paired GTx24013)	Human	WB
GTx24013	Human kidney tumor tissue lysate (paired GTx24012)	Human	WB
GTx22682	Human Kidney Tumor tissue lysate Pair (Normal Tissue and Primary Tumor)	Human	ELISA, IP, WB
GTx22683	Human Kidney Tumor tissue lysate Pair (Primary and Metastatic)	Human	ELISA, IP, WB
GTx24634	Human Liver (Fetal Normal) tissue lysate	Human	ELISA, IP, WB
GTx27930	Human liver tumor tissue lysate	Human	WB
GTx22680	Human Liver Tumor tissue lysate Pair (Normal Tissue and Primary Tumor)	Human	ELISA, IP, WB
GTx22681	Human Liver Tumor tissue lysate Pair (Primary and Metastatic)	Human	ELISA, IP, WB
GTx24014	Human lung normal tissue lysate (paired GTx24015)	Human	WB
GTx24015	Human lung tumor tissue lysate (paired GTx24014)	Human	WB
GTx22673	Human Lung Tumor tissue lysate Pair (Normal Tissue and Primary Tumor)	Human	ELISA, IP, WB
GTx22676	Human Lung Tumor tissue lysate Pair (Primary and Metastatic)	Human	ELISA, IP, WB
GTx27922	Human pancreas normal tissue lysate	Human	WB
GTx15383	Human Pancreas (Tumor) whole tissue lysate	Human	WB
GTx15367	Human Prostate (Normal) tissue lysate	Human	ELISA, IHC-P, WB
GTx24548	Human Prostate (Fetal Normal) tissue lysate	Human	ELISA, IP, WB
GTx15384	Human Prostate (Tumor) tissue lysate	Human	WB
GTx27921	Human spleen normal tissue lysate	Human	WB
GTx24528	Human Spleen (Fetal Normal) tissue lysate	Human	ELISA, IP, WB
GTx15388	Human Spleen (Tumor) tissue lysate	Human	WB
GTx15374	Human Testis (Normal) tissue lysate	Human	WB
GTx24524	Human Testis (Fetal Normal) tissue lysate	Human	ELISA, IP, WB

## Lysate

Cat. No.	Product	Host & Clonality	Application
GTX15389	Human Testis (Tumor) tissue lysate	Human	WB
GTX15376	Human Thyroid (Normal) tissue lysate	Human	WB
GTX24517	Human Thyroid (Fetal Normal) tissue lysate	Human	ELISA, IP, WB
GTX15391	Human Thyroid (Tumor) tissue lysate	Human	WB

## Slides

Cat. No.	Product	Host & Clonality	Application
GTX22203	Human Brain (Normal) tissue slides	Human	IHC-P
GTX22209	Human Brain (Fetal) tissue slides	Human	IHC-P, ISH
GTX22201	Human Brain (Tumor) tissue slides	Human	IHC-P
GTX24701	Human Breast (Adenocarcinoma - mucous) tissue slides	Human	IHC-P, ISH
GTX24697	Human Breast (invasive ductal carcinoma) tissue slides	Human	IHC-P, ISH
GTX24696	Human Breast (fibroadenoma) tissue slides	Human	IHC-P, ISH
GTX24698	Human Breast (lobular carcinoma) tissue slides	Human	IHC-P, ISH
GTX24700	Human Breast (medullary carcinoma) tissue slides	Human	IHC-P, ISH
GTX24286	Human Appendix (Normal) tissue slides	Human	IHC-P, ISH
GTX24667	Human Appendix (adenocarcinoma) tissue slides	Human	IHC-P, ISH
GTX24327	Human Colon (Normal) tissue slides	Human	IHC-P, ISH
GTX24703	Human Colon (adenocarcinoma - mucoid) tissue slides	Human	IHC-P, ISH
GTX24704	Human Colon (adenocarcinoma - ulcer) tissue slides	Human	IHC-P, ISH
GTX24702	Human Colon (adenocarcinoma) tissue slides	Human	IHC-P, ISH
GTX24329	Human Esophagus (Normal) tissue slides	Human	IHC-P, ISH
GTX24716	Human Esophagus (squamous cell carcinoma - poorly differentiated) tissue slides	Human	IHC-P, ISH
GTX24715	Human Esophagus (squamous cell carcinoma - moderately differentiated) tissue slides	Human	IHC-P, ISH
GTX25108	Human Small intestine: Duodenum (Adenocarcinoma) tissue slides	Human	IHC-P, ISH
GTX24371	Human Stomach (Normal) tissue slides	Human	IHC-P, ISH
GTX25114	Human Stomach (adenocarcinoma - poorly differentiated) tissue slides	Human	IHC-P, ISH
GTX25116	Human Stomach (adenocarcinoma - moderately differentiated) tissue slides	Human	IHC-P, ISH
GTX25117	Human Stomach (adenocarcinoma - well differentiated) tissue slides	Human	IHC-P, ISH
GTX25115	Human Stomach (squamous cell carcinoma) tissue slides	Human	IHC-P, ISH
GTX24347	Human Kidney (Normal) tissue slides	Human	IHC-P, ISH
GTX24854	Human Kidney (clear cell carcinoma) tissue slides	Human	IHC-P, ISH
GTX24866	Human Kidney (papillary renal cell carcinoma) tissue slides	Human	IHC-P, ISH
GTX24867	Human Kidney (renal cell carcinoma) tissue slides	Human	IHC-P, ISH
GTX24348	Human Liver (Normal) tissue slides	Human	IHC-P, ISH
GTX24874	Human Liver (adenocarcinoma) tissue slides	Human	IHC-P, ISH
GTX24875	Human Liver (cholangiocellular carcinoma) tissue slides	Human	IHC-P, ISH
GTX24876	Human Liver (hepatoblastoma - epithelial type) tissue slides	Human	IHC-P, ISH
GTX24877	Human Liver (hepatocellular carcinoma) tissue slides	Human	IHC-P, ISH
GTX24878	Human Liver (nodulous hepatocellular carcinoma) tissue slides	Human	IHC-P, ISH
GTX24349	Human Lung (Normal) tissue slides	Human	IHC-P, ISH
GTX24879	Human Lung (adenocarcinoma) tissue slides	Human	IHC-P, ISH
GTX24886	Human Lung (large cell carcinoma) tissue slides	Human	IHC-P, ISH
GTX24892	Human Lung (small cell carcinoma) tissue slides	Human	IHC-P, ISH
GTX24880	Human Lung (squamous cell carcinoma) tissue slides	Human	IHC-P, ISH
GTX25029	Human Ovary (papillary cystadenocarcinoma) tissue slides	Human	IHC-P, ISH
GTX21815	Human Ovary (Epithelial Tumor) tissue slides	Human	IHC-P
GTX21816	Human Ovary (Benign) tissue slides	Human	IHC-P
GTX21821	Human Ovary (Benign Epithelial Tumor) tissue slides	Human	IHC-P
GTX24611	Human Pancreas (Normal) tissue slides	Human	IHC-P, ISH
GTX25036	Human Pancreas (adenocarcinoma) tissue slides	Human	IHC-P, ISH
GTX25037	Human Pancreas (adenocarcinoma (moderately differentiated) tissue slides	Human	IHC-P, ISH
GTX25038	Human Pancreas (Islet cell tumor) tissue slides	Human	IHC-P, ISH
GTX24355	Human Parotid (Normal) tissue slides	Human	IHC-P, ISH
GTX25045	Human Parotid (pleomorphic adenoma) tissue slides	Human	IHC-P, ISH
GTX24361	Human Prostate (Normal) tissue slides	Human	IHC-P, ISH
GTX25051	Human Prostate (adenocarcinoma) tissue slides	Human	IHC-P, ISH
GTX25052	Human Prostate (neoplasia) tissue slides	Human	IHC-P, ISH
GTX24372	Human Spleen (Normal) tissue slides	Human	IHC-P, ISH

## Slides

Citation

Cat. No.	Product	Host & Clonality	Application
GTX24597	Human Spleen (Liver Cirrhosis) tissue slides	Human	IHC-P, ISH
GTX24602	Human Spleen (Lupus) tissue slides	Human	IHC-P, ISH
GTX21774	Human Spleen (Lymphoma/Leukemia) tissue slides	Human	IHC-P
GTX24373	Human Testis (Normal) tissue	Human	IHC-P, ISH
GTX25129	Human Testis (seminoma) tissue slides	Human	IHC-P, ISH
GTX21747	Human Testis (Tumor) tissue slides	Human	IHC-P, ISH
GTX24374	Human Throat (Normal) tissue slides	Human	IHC-P, ISH
GTX25134	Human Throat (squamous cell carcinoma of pharynx) tissue slides	Human	IHC-P, ISH
GTX24378	Human Uterus (Normal) tissue slides	Human	IHC-P, ISH
GTX25150	Human Uterus (endometrial adenocarcinoma) tissue slides	Human	IHC-P, ISH



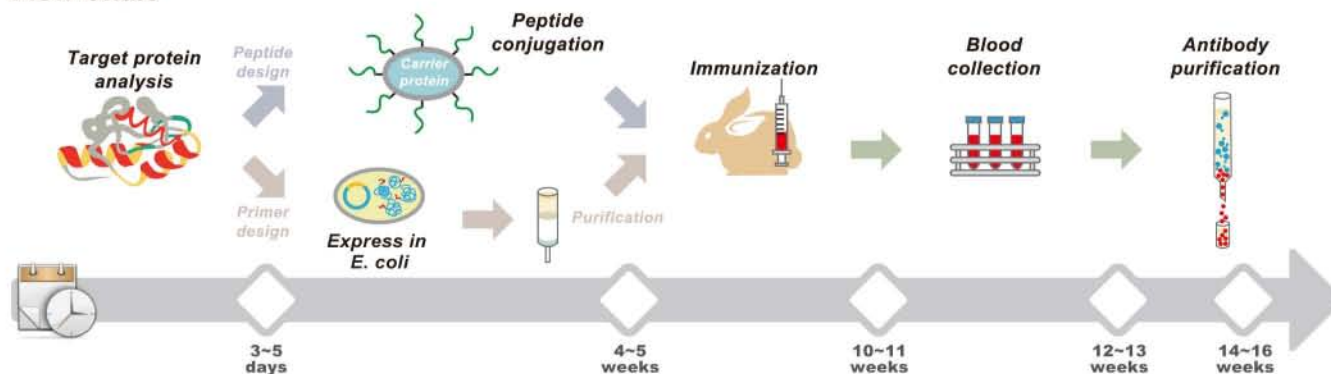
## Custom Antibody Services

Let GeneTex become your personal **custom** antibody production facility. GeneTex has produced **over 25,000** polyclonal antibodies. Use our experience and expertise to help advance your research.

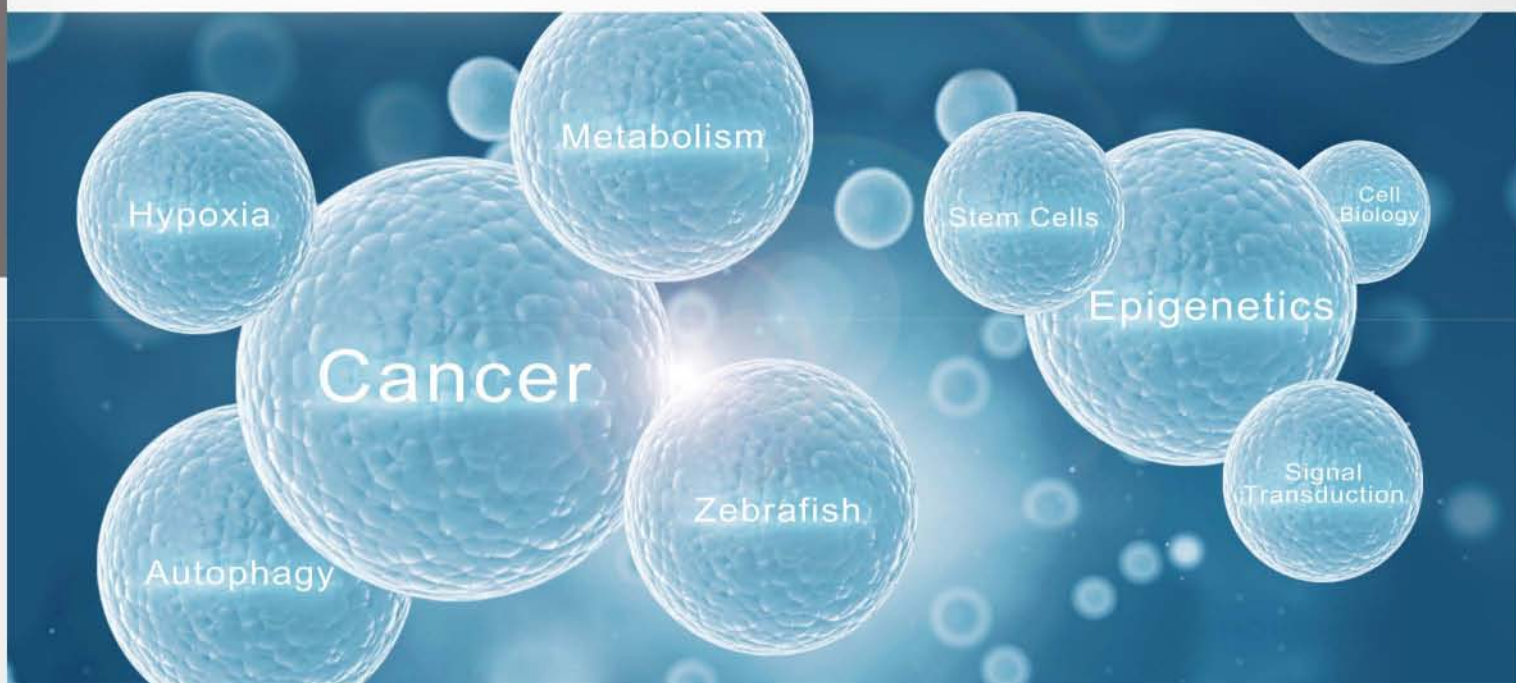
### Featured characteristics

- Proprietary bioinformatics database identifies the ideal target epitope and optimizes synthesis, solubility and antigenicity
- Efficient production of high quality antigens using prokaryotic expression or peptide conjugation
- Enhanced cocktail immunization technique produces high-titer antiserum
- Highly specific antigen affinity purification
- Online tracking system

### Flow Chart



Please contact us for details, pricing and if you have any questions about our custom antibody service.  
Email: [custom\\_service@genetex.com](mailto:custom_service@genetex.com)



## Comprehensive Antibody Collections

GeneTex offers more than 57,000 high-quality primary antibodies and supporting reagents in our catalog, with hundreds of new antibodies added each month.

## 25µl Package and Bulk Quantities Available

Not sure? We have the flexibility of offering products in either trial or bulk sizes to satisfy your needs!

## Custom Antibody Services

Your idea, our laboratory. Let GeneTex become your personal antibody manufacturer with our 17 years' experience and expertise!

## Contact Us

### International

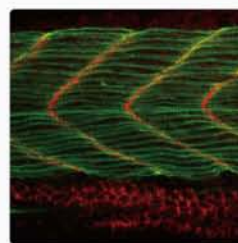
Tel 886.3.6208988  
Fax 886.3.6209098  
E-mail [international@genetex.com](mailto:international@genetex.com)

### USA

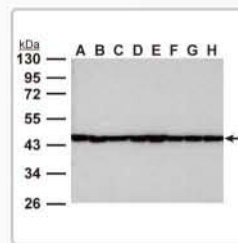
Toll-free 1.877.GeneTex(1.877.436.3839)  
Fax 1.949.309.2888  
E-mail [info@genetex.com](mailto:info@genetex.com)



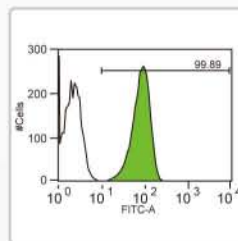
www.genetex.com



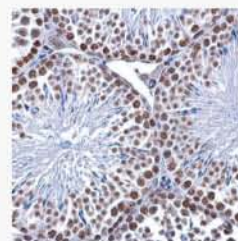
Tln1 antibody (GTX125409)



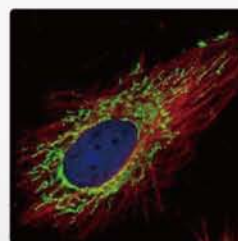
beta Actin antibody (GTX109639)



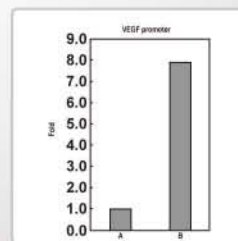
Oct4 antibody [GT486]  
(GTX627419)



5-Methylcytosine / 5-mC antibody  
[GT4111] (GTX629448)



COX4 antibody (GTX101499)



HIF1 alpha antibody (GTX127309)



## International

Tel 886.3.6208988  
Fax 886.3.6209098  
E-mail [international@genetex.com](mailto:international@genetex.com)

## USA

Tel 1.949.553.1900  
Fax 1.949.309.2888  
Toll-free 1.877.436.3839  
E-mail [info@genetex.com](mailto:info@genetex.com)



[www.genetex.com](http://www.genetex.com)

[www.genetex.com](http://www.genetex.com)

PB-C002-150520