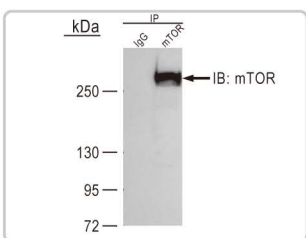
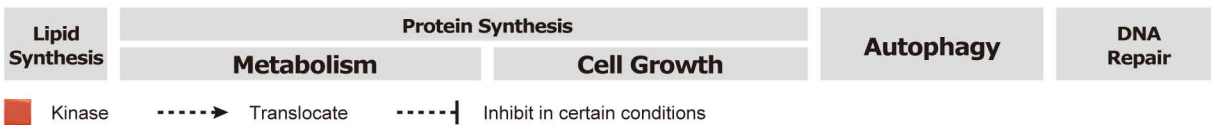
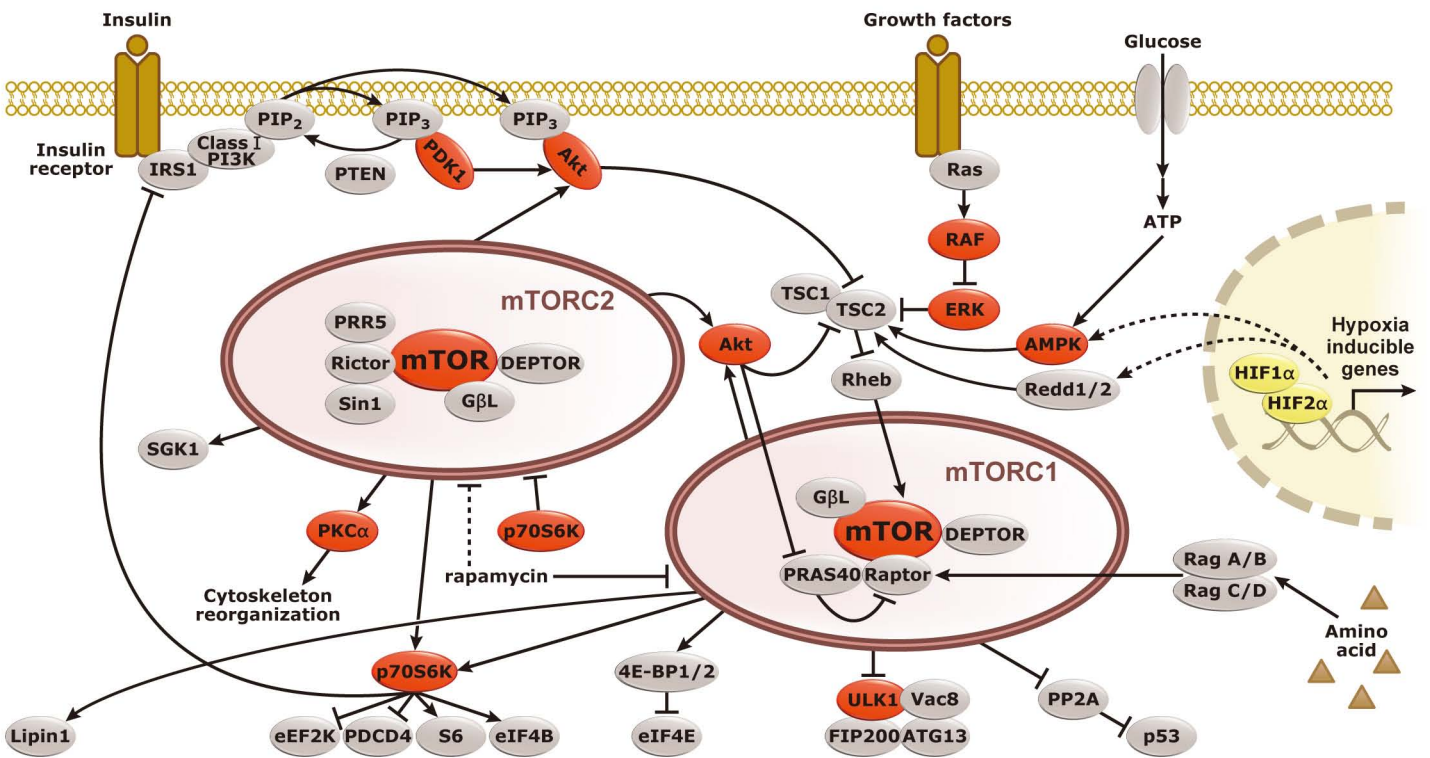
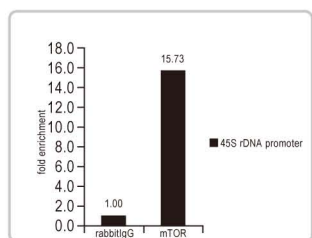


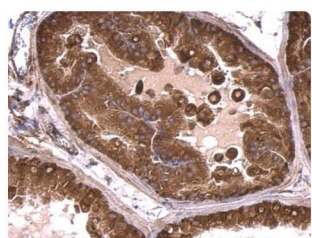
mTOR Signaling



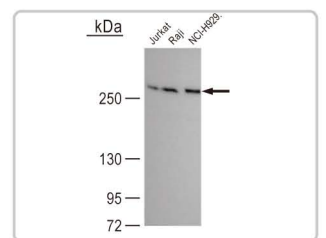
mTOR antibody [C3], C-term (GTx101557) – ChIP grade
 IP analysis with mTOR antibody on 293T whole cell lysate.



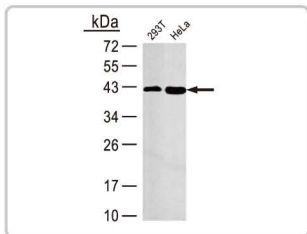
mTOR antibody [C3], C-term (GTx101557) – ChIP grade
 ChIP analysis with mTOR antibody on chromatin extract of 293T cells.



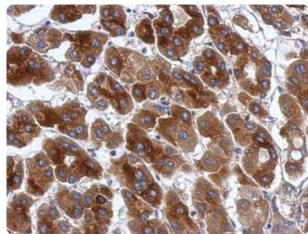
mTOR antibody [C3], C-term (GTx101557) – ChIP grade
 IHC-P analysis with mTOR antibody on mouse prostate tissue.



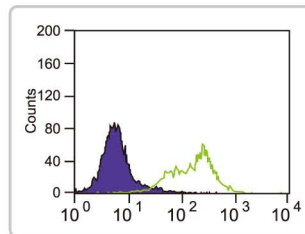
mTOR antibody [GT649] (GTx630198)
 WB analysis with mTOR antibody on whole cell lysates.



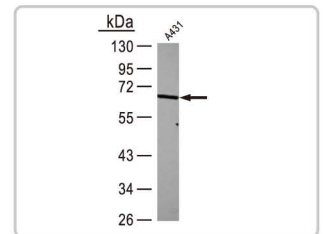
PRAS40 antibody (GTX118391)
WB analysis with PRAS40 antibody on whole cell lysates.



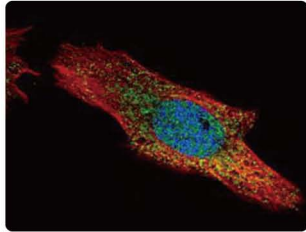
Protor 1 (PRR5) antibody (GTX124179)
IHC-P analysis with PRR5 antibody on hepatoma tissue.



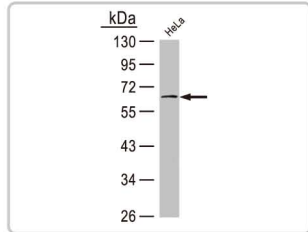
RICTOR antibody [7B3] (GTX82789)
Flow cytometry analysis with RICTOR antibody on HeLa cells.



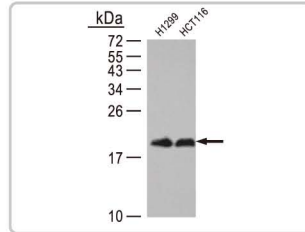
p70 S6K antibody (GTX107562)
WB analysis with p70 S6K antibody on whole cell lysate of A431.



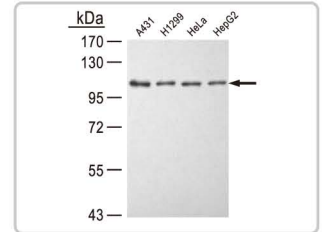
p70 S6K antibody (GTX107562)
ICC/IF analysis with p70 S6K antibody on HeLa cells.



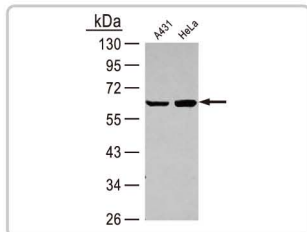
S6K2 antibody [N1C1] (GTX101886)
WB analysis with S6K2 antibody on whole cell lysate of HeLa.



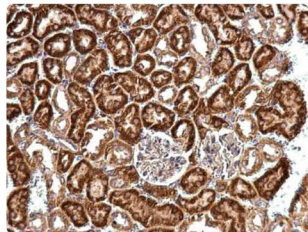
4E-BP1 antibody [N1C3] (GTX109162)
WB analysis with 4E-BP1 antibody on whole cell lysates.



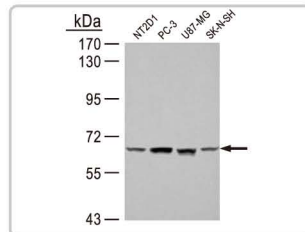
eEF-2K antibody [N1N3] (GTX111496)
WB analysis with eEF-2K antibody on whole cell lysates.



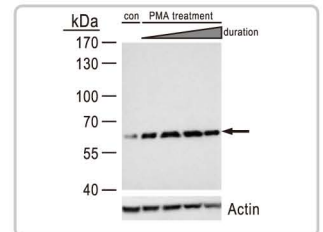
PDCD4 antibody (GTX104901)
WB analysis with PDCD4 antibody on whole cell lysates.



EIF4B antibody [N1N2], N-term (GTX112612)
IHC-P analysis with EIF4B on mouse kidney tissue.



AMPK alpha 1 antibody (GTX112998)
WB analysis with AMPK alpha 1 antibody on whole cell lysates.



Akt1/2/3 (pSer473/474/472) antibody (GTX128414)
WB analysis with Akt1/2/3 (pSer 473/474/472) antibody on MCF-7 treated with 500 nM PMA.

mTOR Signaling Product List

Citation

Cat. No.	Product name	Host & Clonality	Application
GTX109162	4E-BP1 antibody [N1C3]	Rb pAb	IHC-P, WB
GTX116315	4E-BP1 antibody [N1C3-2]	Rb pAb	WB
GTX61987	4E-BP1 (phospho Thr37) antibody [EPR729(2)Y]	Rb mAb	WB
GTX50259	4E-BP1 (phospho Thr45) antibody	Rb pAb	IHC, IHC-P, WB
GTX61834	4E-BP1 (phospho Thr70) antibody [EPR654(2)A]	Rb mAb	IHC-P, WB
GTX61918	4E-BP1/2/3 (phospho Thr45) antibody [EPR2169Y]	Rb mAb	IHC, IHC-P, IP, WB
GTX110613	Akt1 antibody	Rb pAb	ICC/IF, IHC-P, IP, WB
GTX101074	Akt1 antibody [N3C3]	Rb pAb	ICC/IF, IHC-P, WB
GTX11901	Akt1 (phospho Ser473) antibody [104A282]	Ms mAb	ICC/IF, IP, WB
GTX61708	Akt1 (phospho Ser473) antibody [EP2109Y]	Rb mAb	ELISA, FACS, ICC/IF, IHC-P, WB
GTX61798	Akt1 (phospho Thr308) antibody [EP2107Y]	Rb mAb	WB
GTX50339	Akt1 (phospho Thr450) antibody	Rb pAb	ICC/IF, IHC, IHC-P, WB
GTX62621	Akt1 (phospho Thr450) antibody [EPR4157]	Rb mAb	IHC-P, IP, WB
GTX128457	Akt2 antibody	Rb pAb	WB
GTX111612	Akt2 antibody	Rb pAb	ICC/IF, IHC-P, WB
GTX128458	Akt2 antibody	Rb pAb	WB
GTX50186	Akt2 (phospho Ser474) antibody	Rb pAb	IHC, IHC-P, WB
GTX113312	Akt3 antibody	Rb pAb	ICC/IF, IHC-P, WB
GTX127923	Akt3 antibody	Rb pAb	IHC-Wm
GTX104710	Akt3 antibody [N1N3]	Rb pAb	WB
GTX113311	Akt3 antibody [N2C2], Internal	Rb pAb	ICC/IF, WB
GTX121937	Akt1/2/3 antibody [N3C2], Internal	Rb pAb	ICC/IF, IHC, IHC-P, WB
GTX128414	Akt1/2/3 (phospho Ser473/474/472) antibody	Rb pAb	WB
GTX112998	AMPK alpha 1 antibody	Rb pAb	IHC-P, IP, WB

Cat. No.	Product name	Host & Clonality	Application
GTX52341	AMPK alpha (phospho Thr172) antibody	Rb pAb	IHC, WB
GTX50224	AMPK alpha 1 (phospho Ser487) antibody	Rb pAb	ICC/IF, IHC, IHC-P, WB
C GTX103487	AMPK alpha 2 antibody	Rb pAb	ICC/IF, IHC-P, IP, WB
C GTX62916	AMPK alpha 2 (phospho Ser491) antibody [EPR3052]	Rb mAb	WB
GTX50863	AMPK alpha 1/2 antibody	Rb pAb	ICC/IF, IHC, IHC-P, WB
GTX42789	AMPK alpha 1/2 antibody [34.2]	Ms mAb	ELISA, ICC/IF, IHC-Fr, IP, WB
GTX42788	AMPK alpha 1/2 antibody [84.1]	Ms mAb	ELISA, ICC/IF, IHC-Fr, IP, WB
C GTX63165	AMPK alpha 1/2 (phospho Thr183/Thr172) antibody [EPR5683]	Rb mAb	FACS, IP, WB
GTX106705	AMPK beta 1 antibody	Rb pAb	IHC-P, WB
GTX61855	AMPK beta 1 (phospho Ser181) antibody [EP2181Y]	Rb mAb	ICC/IF, IHC-P, WB
GTX79141	AMPK beta 1 (phospho Ser182) antibody	Rb pAb	ELISA, IHC, IHC-P, WB
C GTX101661	AMPK gamma 1 antibody	Rb pAb	IP, WB
GTX109105	AMPK gamma 2 antibody	Rb pAb	ICC/IF, IHC-P, WB
C GTX114178	AMPK gamma 2 antibody [C2C3], C-term	Rb pAb	IHC-P, WB
GTX116540	Deptor antibody [N1C3]	Rb pAb	WB
C GTX107879	eEF-2K antibody	Rb pAb	WB
C GTX111496	eEF-2K antibody [N1N3]	Rb pAb	ICC/IF, IHC-P, WB
GTX50342	eIF2 alpha (phospho Ser49) antibody	Rb pAb	ICC/IF, IHC, IHC-P, WB
C GTX50300	eIF2 alpha (phospho Ser51) antibody	Rb pAb	ICC/IF, IHC, IHC-P, WB
C GTX112919	EIF2 alpha antibody	Rb pAb	WB
GTX112918	EIF2 alpha antibody [N1C1]	Rb pAb	IHC-P, WB
C GTX101241	EIF2 alpha antibody [N1C3]	Rb pAb	ICC/IF, WB
GTX106484	EIF2 beta antibody	Rb pAb	ICC/IF, IHC-P, WB
GTX115156	EIF2 beta antibody	Rb pAb	ICC/IF, IHC-P, WB
GTX50697	eIF2 beta (phospho Ser2) antibody	Rb pAb	WB
GTX112612	EIF4B antibody [N1N2], N-term	Rb pAb	ICC/IF, IHC-P, WB
GTX50343	eIF4B (phospho Ser422) antibody	Rb pAb	IHC, IHC-P, WB
GTX61844	eIF-4B (phospho Ser504) antibody [EP2261Y]	Rb mAb	ICC/IF, WB
C GTX50553	eIF4E antibody	Rb pAb	ICC/IF, IHC, IHC-P, WB
GTX60420	EIF4E antibody [5D11]	Ms mAb	ELISA, FACS, ICC/IF, IHC, WB
C GTX50268	eIF4E (phospho Ser209) antibody	Rb pAb	ICC/IF, IHC, IHC-P, WB
GTX62631	FKBP12 antibody [EP3887]	Rb mAb	ICC/IF, WB
GTX62375	FKBP12 antibody [EPR3888], C-term	Rb mAb	ICC/IF, WB
GTX81312	FKBP12 antibody, Internal	Rb pAb	ELISA, IHC, IHC-P, WB
GTX82202	GBL / mLST8 antibody	Chk pAb	WB
GTX116747	GBL / mLST8 antibody [N2C3]	Rb pAb	WB
C GTX111230	GSK3 beta antibody	Rb pAb	ICC/IF, IHC-P, WB
GTX62011	GSK3 beta (phospho Ser9) antibody [EPR2286Y]	Rb mAb	ICC/IF, IHC-P, WB
GTX113213	IRS1 antibody [C2C3], C-term	Rb pAb	IHC-P, WB
GTX101284	IRS1 antibody [N1N2], N-term	Rb pAb	IHC-P, WB
GTX24865	IRS1 (phospho Ser312) antibody	Rb pAb	WB
GTX38614	IRS1 (phospho Ser639) antibody	Rb pAb	IHC-P, WB
GTX24888	IRS1 (phospho Tyr1179) antibody	Rb pAb	WB
GTX24873	IRS1 (phospho Tyr896) antibody	Rb pAb	WB
GTX24882	IRS1 (phospho Tyr941) antibody	Rb pAb	WB
GTX107992	LPIN1 antibody [C3], C-term	Rb pAb	ICC/IF, IHC-P, WB
GTX115676	LPIN1 antibody [N3C2], Internal	Rb pAb	WB
GTX62333	Lipin-1 antibody [EPR3725]	Rb mAb	FACS, ICC/IF, IHC-P, IP, WB
C GTX101558	mTOR antibody [C1], Internal	Rb pAb	WB
GTX101557	mTOR antibody [C3], C-term	Rb pAb	ICC/IF, IHC-P, IP, WB, ChIP assay
GTX630198	mTOR antibody [GT649]	Ms mAb	WB
GTX630199	mTOR antibody [GT6611]	Ms mAb	WB
GTX61244	mTOR antibody [Y391], C-term	Rb mAb	FACS, ICC/IF, IHC-P, IP, WB
GTX50258	mTOR (phospho Ser2448) antibody	Rb pAb	ICC/IF, IHC, IHC-P, WB
C GTX62472	mTOR (phospho Ser2448) antibody [EPR426(2)]	Rb mAb	FACS, ICC/IF, IHC-P, WB
C GTX107562	p70 S6K antibody	Rb pAb	ICC/IF, IHC-P, WB

mTOR Signaling Product List

Citation

Cat. No.	Product name	Host & Clonality	Application
GTX103174	p70 S6K antibody	Rb pAb	ICC/IF, IHC-P, WB
GTX60550	p70 S6K antibody [5G9]	Ms mAb	ELISA, FACS, IHC, IHC-P, WB
GTX61138	p70 S6K antibody [E343], N-term	Rb mAb	FACS, IHC-P, IP, WB
GTX50294	p70 S6K (phospho Ser411) antibody	Rb pAb	ICC/IF, IHC, IHC-P, WB
GTX50304	p70 S6K (phospho Ser424) antibody	Rb pAb	ICC/IF, IHC, IHC-P, WB
GTX25231	p70 S6K (phospho Thr229) antibody	Rb pAb	ICC/IF, WB
GTX19380	P70 S6K (phospho Thr389) antibody	Rb pAb	ICC/IF, WB
GTX50282	p70 S6K (phospho Thr421) antibody	Rb pAb	ICC/IF, IHC, IHC-P, WB
GTX104901	PDCD4 antibody	Rb pAb	ICC/IF, WB
GTX85616	PDCD4 (phospho Ser457) antibody	Rb pAb	ELISA, IHC-P, WB
GTX113523	PP2A alpha antibody	Rb pAb	ICC/IF, IHC-P, WB
GTX106334	PP2A alpha antibody	Rb pAb	ICC/IF, IHC-P, WB
GTX61062	PP2A (phospho Tyr307) antibody [E155]	Rb mAb	ICC/IF, IHC-P, IP, WB
GTX118391	PRAS40 antibody	Rb pAb	IHC-P, WB
GTX63573	PRAS40 antibody [EPR6262]	Rb mAb	IP, WB
GTX63745	PRAS40 (phospho Thr246) antibody [EPR6262-107]	Rb mAb	IP, WB
GTX124197	Protor1(PRR5) antibody	Rb pAb	WB
GTX124179	Protor1(PRR5) antibody	Rb pAb	IHC-P, WB
GTX45033	PRR5 antibody, Internal	Rb pAb	WB
GTX25454	Raptor antibody	Rb pAb	WB
GTX61316	Raptor antibody [EP539Y], C-term	Rb mAb	FACS, ICC/IF, IHC-P, IP, WB
GTX30906	REDD1 antibody	Rb pAb	ICC/IF, IP, WB
GTX45694	REDD2 / DDIT4L antibody, Internal	Rb pAb	WB
GTX62202	Rheb antibody [EPR2971]	Rb mAb	FACS, ICC/IF, IHC-P, WB
GTX108597	Rheb antibody [N1C3]	Rb pAb	WB
GTX82789	RICTOR antibody [7B3]	Ms mAb	ELISA, FACS, ICC/IF, IHC, IHC-P, WB
GTX104617	RICTOR antibody [C3], C-term	Rb pAb	ICC/IF, IHC, IHC-P, WB
GTX89552	RICTOR antibody, C-term	Gt pAb	ELISA, IHC, IHC-P
GTX50552	S6 Ribosomal Protein antibody	Rb pAb	ICC/IF, IHC, IHC-P, WB
GTX50267	S6 Ribosomal Protein (phospho Ser235) antibody	Rb pAb	ICC/IF, WB
GTX78950	S6 Ribosomal Protein (phospho Ser235) antibody	Rb pAb	WB
GTX101887	S6K2 antibody	Rb pAb	ICC/IF, WB
GTX101886	S6K2 antibody [N1C1]	Rb pAb	ICC/IF, IHC-P, WB
GTX48547	SIN1 antibody	Rb pAb	WB
GTX110681	SIN1 antibody [N3C3]	Rb pAb	IHC-P, WB
GTX61370	TSC1 antibody [EP318Y], C-term	Rb mAb	IHC-P, WB
GTX89366	TSC1 antibody, C-term	Gt pAb	ELISA, IHC-P, WB
GTX81899	TSC2 antibody	Rb pAb	ELISA, ICC/IF, IHC, IHC-P, WB
GTX61435	TSC2 antibody [EP1107Y]	Rb mAb	FACS, IHC-P, IP, WB
GTX61245	TSC2 antibody [Y320], C-term	Rb mAb	FACS, IHC-M, IHC-P, WB
GTX78927	TSC2 (phospho Ser1254) antibody	Rb pAb	ELISA, IHC, IHC-P, WB
GTX63738	TSC2 (phospho Ser1254) antibody [EPR5682]	Rb mAb	IHC, IHC-P, IP, WB
GTX85619	TSC2 (phospho Ser664) antibody	Rb pAb	ICC/IF, IHC-P
GTX61434	TSC2 (phospho Ser939) antibody [EP1062Y]	Rb mAb	ICC/IF, WB
GTX62919	TSC2 (phospho Thr1462) antibody [EPR1060(2)]	Rb mAb	ICC/IF, IHC-M, IHC-P, WB



International

Tel 886.3.6208988
 Fax 886.3.6209098
 Address 6F-2, No.89, Dongmei Rd., Hsinchu 300, Taiwan (R.O.C.)
 E-mail international@genetex.com

USA

Toll-free 1.877.GeneTex(1.877.436.3839)
 Fax 1.949.309.2888
 Address 2456 Alton Parkway, Irvine, CA 92606 USA
 E-mail info@genetex.com



www.genetex.com