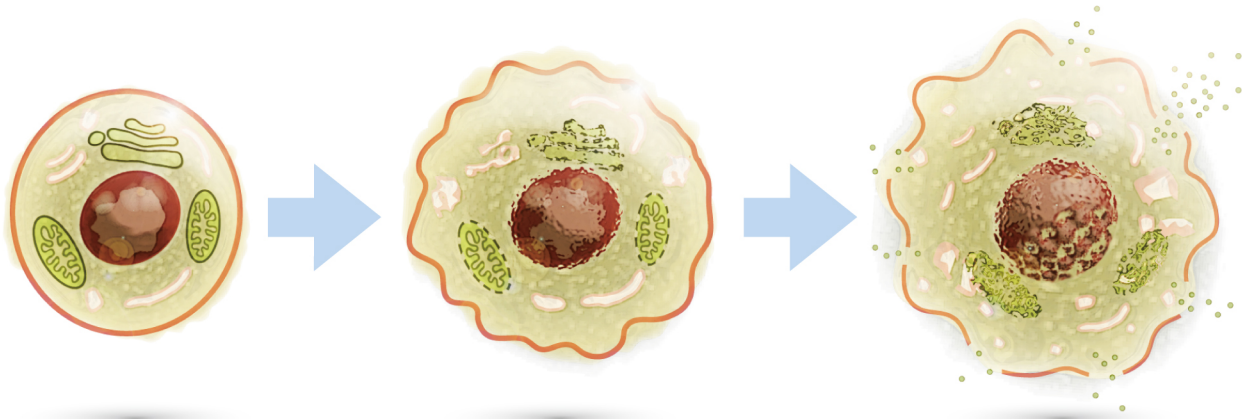
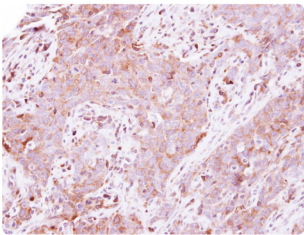


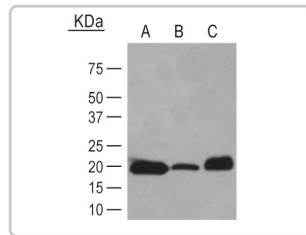
Necrosis Markers



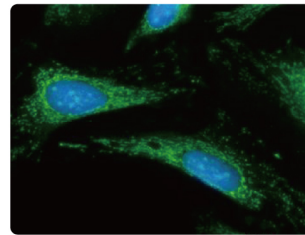
Pan-Necrosis Markers



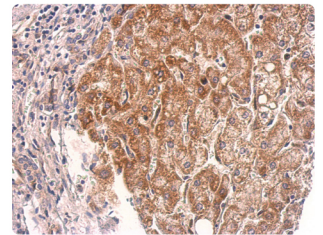
LDH-A antibody (GTX101416):
IHC-P analysis of lung papillary adenocarcinoma.



Myoglobin antibody (GTX62048):
WB analysis of (A) human, (B) mouse and (C) rat muscle tissue lysates.



Cyclophilin A antibody (GTX104698):
ICC/IF analysis of methanol-fixed HeLa cells.



Cyclophilin D antibody (GTX104038):
IHC-P analysis of hepatoma.

	<i>Cat. No.</i>	<i>Product</i>	<i>Host & Clonality</i>	<i>Reactivity</i>	<i>Application</i>
Lactate dehydrogenase (LDH)	GTX101416	LDH-A antibody	Rb pAb	Hu, Ms, Rat	ICC/IF, IHC-P, WB
	GTX84225	LDH-A antibody [2C11]	Ms mAb	Hu	IHC, WB
	GTX50001	LDH-A antibody [AT1A4]	Ms mAb	Hu	ELISA, ICC/IF, WB
	GTX48868	LDH antibody	Gt pAb	Rb	ELISA, IP, WB
Myoglobin	GTX62048	Myoglobin antibody	Rb mAb	Hu, Ms, Rat	IHC-M, IHC-P, IP, WB
	GTX81763	Myoglobin antibody	Rb pAb	Hu, Ms	ELISA, IHC, WB
	GTX28343	Myoglobin antibody [4E2]	Ms mAb	Hu	EIA, ELISA, WB
	GTX83147	Myoglobin antibody [6H8B5]	Ms mAb	Hu	ELISA, IHC, WB
Cyclophilin A	GTX104698	Cyclophilin A antibody	Rb pAb	Hu	ICC/IF, IHC-P, WB
	GTX113520	Cyclophilin A antibody	Rb pAb	Hu, Ms	IHC-P, WB
	GTX37261	Cyclophilin A antibody	Ms mAb	Hu	ELISA, WB
	GTX89433	Cyclophilin A antibody	Gt pAb	Hu, Ms, Cow, Dog, Pig, Rat	ELISA, WB
Cyclophilin D	GTX104038	Cyclophilin D antibody	Rb pAb	Hu, Ms	ICC/IF, IHC-P, WB
	GTX79245	Cyclophilin D antibody	Rb pAb	Hu, Ms, Rat	FACS, GSA, ICC/IF, IHC-F, IP, WB
	GTX89009	Cyclophilin D antibody	Gt pAb	Hu, Ms, Dog, Rat	ELISA, WB

Acute Tubular Necrosis Markers

	Cat. No.	Product	Host & Clonality	Reactivity	Application
Kidney Injury Molecule-1 (KIM-1)	GTX85067	KIM-1 / TIM-1 antibody	Rb pAb	Hu, Ms, Rat	ELISA, WB
	GTX85068	KIM-1 / TIM-1 antibody	Rb pAb	Hu, Ms	ELISA, IHC, WB
IL-18	GTX101368	IL18 antibody	Rb pAb	Hu	ELISA, IHC-P, WB
	GTX59767	IL-18 antibody	Rb pAb	Ms	IP, Neut, WB
	GTX75814	IL18 antibody [5-C-5]	Ms mAb	Pig	ELISA, WB
	GTX75813	IL18 antibody [7-G-8]	Ms mAb	Pig	ELISA, WB

Cardiac Necrosis Markers

Citation

	Cat. No.	Product	Host & Clonality	Reactivity	Application
Cardiac Troponin I (cTnI)	GTX112770	Cardiac Troponin I antibody	Rb pAb	Hu, Ms	WB
	GTX10231	Cardiac Troponin I antibody [4C2]	Ms mAb	Hu, Ms, Cat, Cow, Dog, Gt, Pig, Rb, Rat	Apuri, ELISA, IA, WB
	GTX28289	Cardiac Troponin I antibody [19C7]	Ms mAb	Hu, Ms, Cat, Cow, Dog, Fsh, Gt, Pig, Rb, Rat	Apuri, ELISA, IA, WB
	GTX38828	Cardiac Troponin I antibody [B158M]	Ms mAb	Hu	ELISA, WB, IHC, IP
Cardiac Troponin T (cTnT)	GTX28295	Cardiac Troponin T antibody [1C11]	Ms mAb	Hu, Ms, Dog, Rat	Apuri, EIA, ELISA, WB
	GTX10214	Cardiac Troponin T antibody [1F11]	Ms mAb	Hu, Ms, Cat, Cow, Dog, Fsh, Gt, Pig, Rb, Rat	Apuri, ELISA, IA, WB
	GTX27819	Cardiac Troponin T antibody [9B1]	Ms mAb	Hu	ELISA, IHC-Fr, IHC-P, IP, WB
Creatine Kinase MB (CK-MB)	GTX44040	Creatine Kinase MB antibody [B927M]	Ms mAb	Hu	LFI, ELISA
	GTX44039	Creatine Kinase MB antibody [B928M]	Ms mAb	Hu	LFI, ELISA

Hepatic Necrosis Markers

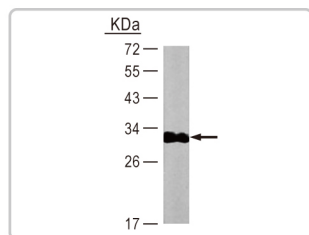
Citation

	Cat. No.	Product	Host & Clonality	Reactivity	Application
Glutamate Dehydrogenase (GLDH)	GTX105765	Glutamate Dehydrogenase antibody	Rb pAb	Hu	ICC/IF, IHC-P, WB
	GTX88164	Glutamate Dehydrogenase antibody	Gt pAb	Hu, Ms, Cow, Dog, Rat	ELISA, WB

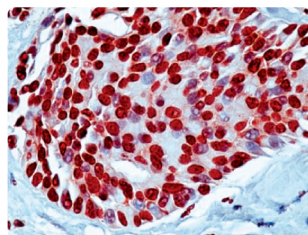
Pancreatic Necrosis Markers

Citation

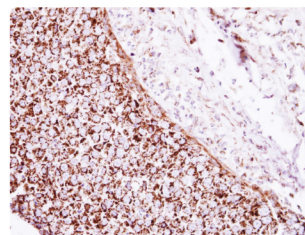
	Cat. No.	Product	Host & Clonality	Reactivity	Application
C Reactive Protein (CRP)	GTX101262	CRP antibody	Rb pAb	Hu	WB
	GTX72817	CRP antibody	Rb pAb	Hu	ELISA, IP, RIA
	GTX10026	CRP antibody [C1]	Ms mAb	Hu	Apuri, WB
	GTX10027	CRP antibody [C3]	Ms mAb	Hu	Apuri, ELISA, IA
	GTX13426	CRP antibody [CRP-8]	Ms mAb	Hu	Dot, ELISA, WB
MMP-9	GTX100458	MMP-9 antibody	Rb pAb	Hu	ICC/IF, IHC-P, WB
	GTX59797	MMP-9 antibody	Rb pAb	Hu, Ms, Rat	WB
	GTX59881	MMP-9 antibody	Rb pAb	Rat	IHC, IP, WB
	GTX11225	MMP-9 antibody [6-6B]	Ms mAb	Hu	ICC/IF, IP, WB
	GTX23159	MMP-9 antibody [GE-213]	Ms mAb	Hu	IHC-Fr, IP, WB



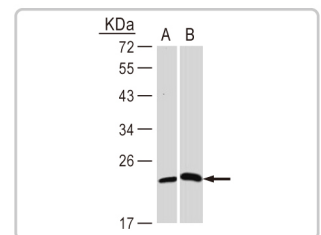
Cardiac Troponin I antibody (GTX112770):
WB analysis of mouse heart tissue lysate.



Cardiac Troponin T antibody [1C11] (GTX28295):
IHC analysis.



Glutamate Dehydrogenase antibody (GTX105765):
IHC-P analysis of breast cancer tissue.



CRP antibody (GTX101262):
WB analysis of (A) H1299 and (B) Molt-4 cell lysates.



International

Tel 886.3.6208988
Fax 886.3.6209098
Address 6F-2, No.89, Dongmei Rd., Hsinchu 300, Taiwan (R.O.C.)
E-mail info@genetex.com

USA

Toll-free 1.877.GeneTex(1.877.436.3839)
Fax 1.949.309.2888
Address 2456 Alton Parkway, Irvine, CA 92606 USA
E-mail info@genetex.com



Join us on Facebook
www.facebook.com/GeneTexTW