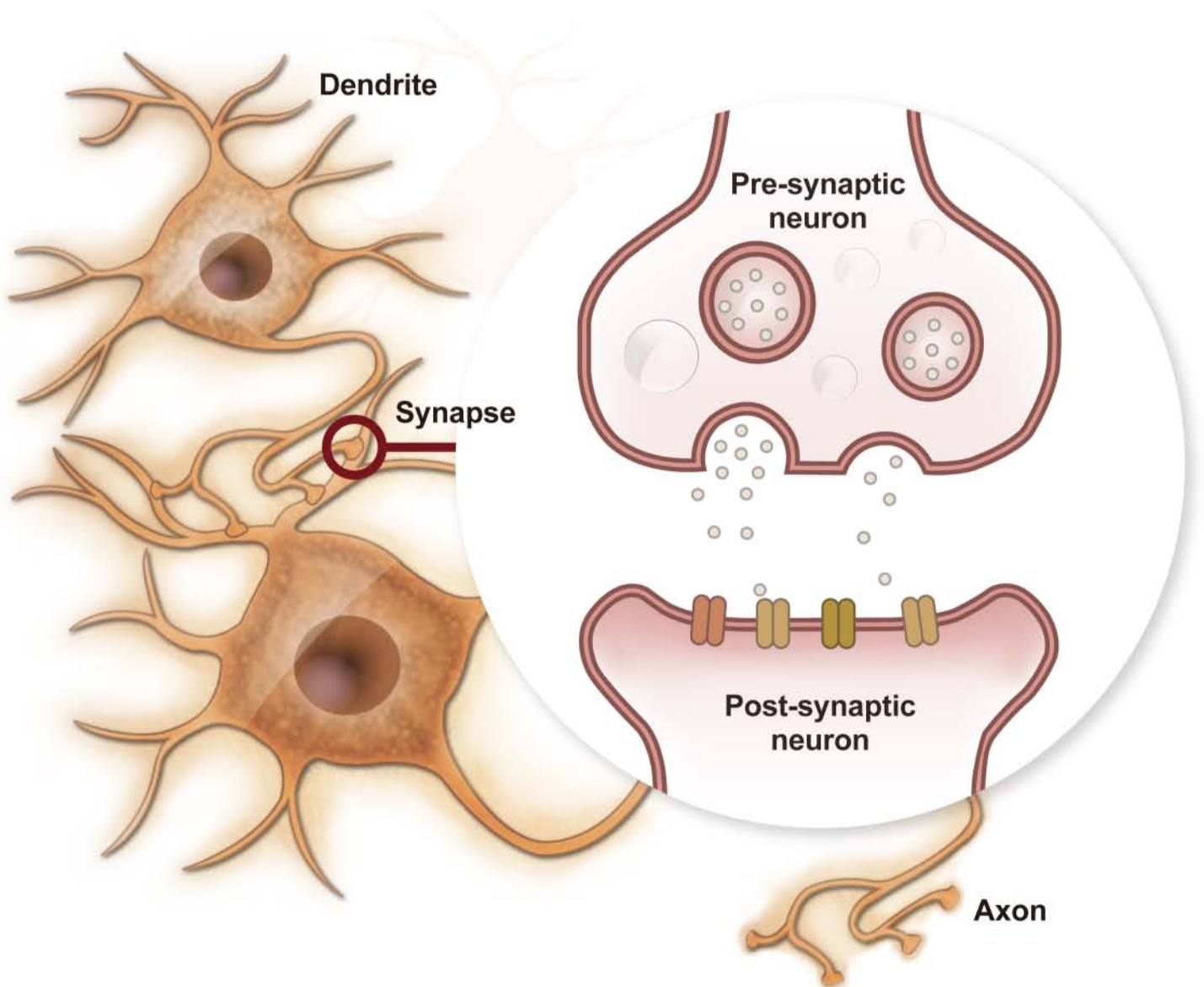


Neuronal Markers



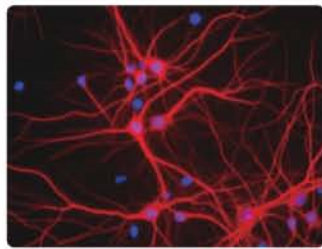
Share your results using Neuronal Marker Antibodies of GeneTex

Do you have image in the following application: Confocal immunofluorescence, immunofluorescence, immunohistochemistry or other images using **Neuronal Marker Antibodies of GeneTex**. Share your results with GeneTex and receive a gift. We will also post your image on our website with a citation.

Neurite Markers

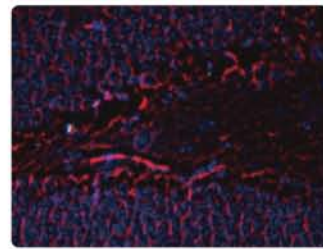
	Cat. No.	Product name	Host & Clonality	Reactivity	Application
Dendrite	GTX111679	MAP2 antibody	Rb pAb	Hu	IHC-P, WB
	GTX11268	MAP2 antibody [AP20]	Ms mAb	Ms, Cow, Ql, Rat, SIm, XI	ICC/IF, WB
	GTX27756	MAP2 antibody [MT-01]	Ms mAb	Ms, Cat, Cow, Pig	ICC/IF, IP, WB
	GTX79912	MAP2 antibody [MT-07]	Ms mAb	Hu, Ms, Pig	ELISA, ICC/IF, IHC-Fr, IHC-P, IP, WB
	GTX82661	MAP2 antibody	Ch pAb	Hu, Ms, Cow, Rat	ICC/IF, WB
Axon	GTX102451	β -Tubulin 3 / TUJ1 antibody	Rb pAb	Hu, Ms	ICC/IF, WB
	GTX61563	β -Tubulin 3 antibody [EP1569Y]	Rb mAb	Hu, Ms, Rat	FACS, ICC/IF, IHC-M, IHC-P, IP, WB
	GTX83356	β -Tubulin 3 antibody [2E9]	Ms mAb	Hu	ELISA, FACS, ICC/IF
	GTX27751	β -Tubulin 3 antibody [TU-20]	Ms mAb	Hu, Ms, Bb, Carp, Cow, Hm, Pig, Rat	ICC/IF, IHC-P, IP, WB
	GTX85469	TUJ1 antibody	Ch pAb	Hu, Ms, Rat	ICC/IF, IHC, WB
Neurite	GTX17114	200kDa + 70kDa Neurofilament antibody [2F11]	Ms mAb	Hu	IHC-P, IP, WB
	GTX15234	200kDa + 68kDa Neurofilament antibody [SPM145]	Ms mAb	Hu, Ms, Cat, Rb, Rat	IHC-P, IP, WB

Dendrite marker



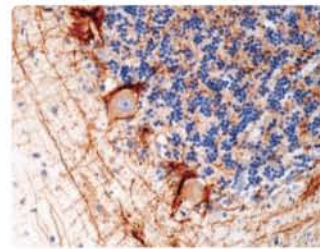
MAP2 antibody (GTX82661)

Axon marker



TUJ1 antibody [AA10] (GTX82572)

Neurite marker



200kDa + 70kDa Neurofilament antibody [2F11] (GTX17114)

Selected Application References

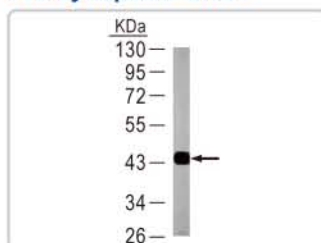
MAP2 antibody [MT-01] (GTX27756)
Aprea, S. et al. (2006) J Neurosci. 26:4054-62.

MAP2a + MAP2b antibody [SPM284] (GTX17748)
Saegusa, Y. et al. (2011) Vet Pathol. 48:1024-8.

Synaptic Markers

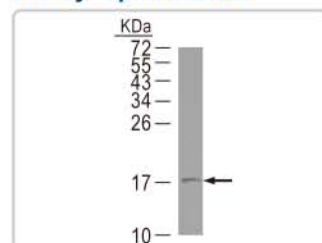
	Cat. No.	Product name	Host & Clonality	Reactivity	Application
Pre-synaptic markers	GTX31138	vGluT1 antibody	Sh pAb	Ms, Rat	IHC, WB
	GTX31139	vGluT2 antibody	Rb pAb	Ms, Rat	IHC, WB
	GTX80428	vGluT2 antibody	Rb pAb	Hu, Ms	ELISA, IHC, WB
	GTX31141	vGluT3 antibody	Rb pAb	Ms	IHC, WB
	GTX31140	vGluT3 antibody	Rb pAb	Rat	IHC, IM, RID, WB
	GTX100865	Synaptophysin antibody	Rb pAb	Hu, Ms	ICC/IF, IHC-P, WB
	GTX61475	Synaptophysin antibody [EP1098Y]	Rb mAb	Hu, Ms, Rat	FACS, ICC/IF, IP, WB
	GTX18008	Synaptophysin antibody [4E206]	Ms mAb	Hu, Ms, Cow, Rat	IHC, IP, WB
	GTX11105	Synaptophysin antibody [SP15]	Ms mAb	Hu, Hm, Pig, Rat	ELISA, IHC-P, WB
	GTX102127	Synaptobrevin / VAMP1 antibody	Rb pAb	Hu	IHC-P, WB
	GTX44735	Synaptobrevin antibody [SP10]	Ms mAb	Hu, Pig	ELISA, ICC/IF, WB
	GTX121462	VAMP2 antibody	Rb pAb	Hu	WB-Ag
	GTX14279	VAMP2 antibody	Ch pAb	Hu, Ms, Rat	ICC/IF, WB
	GTX113839	SNAP25 antibody	Rb pAb	Hu, Ms	IHC-P, WB
	GTX62566	SNAP25 antibody [EP3274]	Rb mAb	Hu, Ms, Rat	ICC/IF, IHC-M, IHC-P, WB
	GTX11102	SNAP25 antibody [SP12]	Ms mAb	Hu, Hm, Pig, Rat	ELISA, IHC-P, WB
GTX89577	SNAP25 antibody	Gt pAb	Hu, Ms, Dog, Rat	ELISA, IHC, WB	
Post-synaptic markers	GTX61948	PSD95 antibody [EP2652Y]	Rb mAb	Hu, Ms, Rat	FACS, ICC/IF, IP, WB
	GTX22723	PSD95 antibody [6G6-1C9]	Ms mAb	Ms, Rat	ICC/IF, IP, WB
	GTX80682	PSD95 antibody [7E3-1B8]	Ms mAb	Ms, Rat, XI	ICC/IF, IHC-F, IP, WB
	GTX88388	PSD95 antibody	Gt pAb	Hu, Ms, Cow, Dog, Rat	ELISA, WB

Pre-synaptic marker



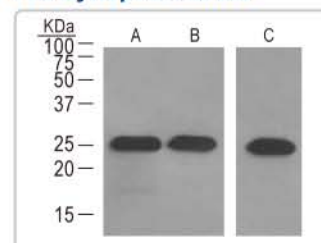
Synaptophysin antibody (GTX100865)

Pre-synaptic marker



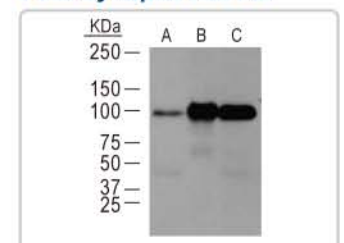
Synaptobrevin / VAMP1 antibody (GTX102127)

Pre-synaptic marker



SNAP-25 antibody [EPR3275] (GTX62607)

Post-synaptic marker



PSD95 antibody [EP2652Y] (GTX61948)