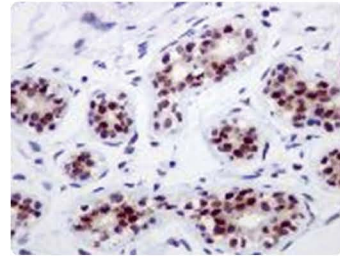
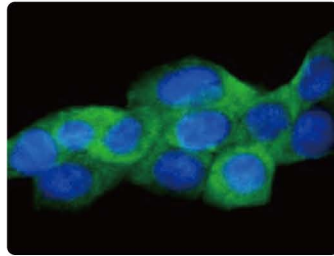


IKK family

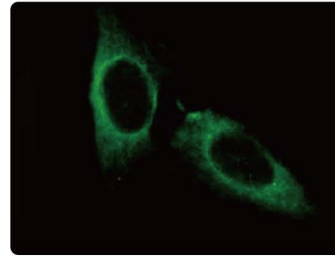
| | Cat. No. | Product name | Host & Clonality | Reactivity | Application |
|--------------------|------------------|---|------------------|-------------|-----------------------|
| IKK β | GTX105690 | IKK β antibody | Rb pAb | Hu | ICC/IF, IHC-P, WB |
| | GTX50693 | IKK β antibody | Rb pAb | Hu, Ms, Rat | ICC/IF, WB |
| | GTX83085 | IKK β antibody [10A2C5B3] | Ms mAb | Hu | ELISA, IHC |
| | GTX12140 | IKK β antibody [10A9B6] | Ms mAb | Hu | IP, WB |
| IKK α/β | phospho GTX79039 | IKK α/β (phospho Ser176) antibody | Rb pAb | Hu, Ms, Rat | ELISA, IHC, WB |
| | phospho GTX79040 | IKK α/β (phospho Ser180/Ser181) antibody | Rb pAb | Hu, Ms, Rat | ELISA, IHC, WB |
| IKK γ | GTX107582 | IKK γ antibody | Rb pAb | Hu | ICC/IF, IHC-P, WB |
| | GTX12141 | IKK γ antibody [46B844] | Ms mAb | Hu | WB |
| IKK ϵ | GTX111350 | IKK ϵ antibody | Rb pAb | Hu | ICC/IF, WB |
| | GTX63506 | IKK ϵ antibody [EPR4904] | Rb mAb | Hu | FACS, ICC/IF, IHC, WB |
| | phospho GTX85606 | IKK ϵ (phospho Thr500) antibody | Rb pAb | Hu, Ms, Rat | ELISA, IHC-P, WB |



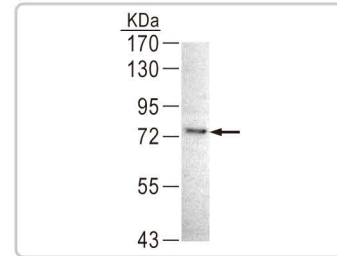
IKK α antibody [EPR464] (GTX62710):
IHC-P analysis of human breast tissue.



IKK β antibody (GTX105690):
ICC/IF analysis of PFA-fixed A431 cells.



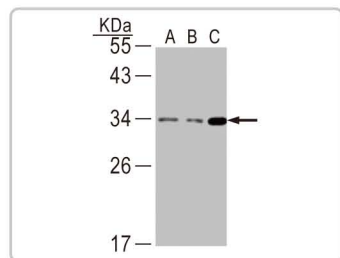
IKK γ antibody (GTX107582):
ICC/IF analysis of methanol-fixed HeLa cells.



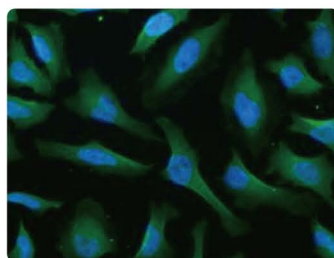
IKK ϵ antibody (GTX111350):
WB analysis of 293T cell lysate.

Regulators of NF κ B pathway

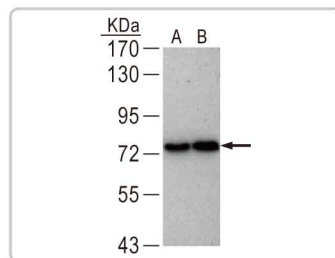
| | Cat. No. | Product name | Host & Clonality | Reactivity | Application |
|--------|-------------------|-----------------------------------|------------------|-------------|--------------------------|
| Bcl-10 | GTX109159 | Bcl-10 antibody | Rb pAb | Hu, Ms | IHC-P, WB |
| | GTX112744 | Bcl-10 antibody | Rb pAb | Hu | ICC/IF, IHC-P, WB |
| | GTX83215 | Bcl-10 antibody [4F8E8H8,4F8E3H8] | Ms mAb | Hu, Ms | ELISA, FACS, ICC/IF, IHC |
| MALT1 | GTX111091 | MALT1 antibody | Rb pAb | Hu | ICC/IF, IHC-P, WB |
| | GTX39761 | MALT1 antibody [50] | Ms mAb | Hu | IHC-P, WB |
| NIK | GTX102471 | NIK / MAP3K14 antibody | Rb pAb | Hu | WB |
| NAK | GTX113057 | NAK antibody | Rb pAb | Hu | WB |
| | GTX61299 | NAK antibody [EP611Y] | Rb mAb | Hu, Ms, Rat | ICC/IF, IHC-P, IP, WB |
| | Citation GTX12116 | NAK antibody [108A429] | Ms mAb | Hu | ICC/IF, IHC, WB |
| TANK | GTX59886 | TANK antibody | Rb pAb | Hu, Ms, Rat | IHC, IP |
| NRAF | GTX81783 | NKRF antibody | Rb pAb | Hu | ELISA, IHC, WB |



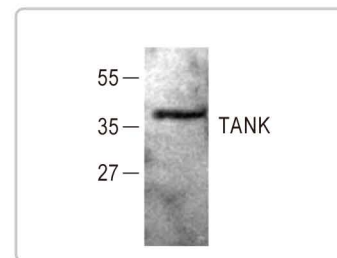
Bcl-10 antibody (GTX109159):
WB analysis of (A) HepG2, (B) Molt-4, and (C) Raji cells.



MALT1 antibody (GTX111091):
ICC/IF analysis of PFA-fixed HeLa cells.



NAK antibody (GTX113057):
WB analysis of (A) HeLa and (B) HepG2 cells.



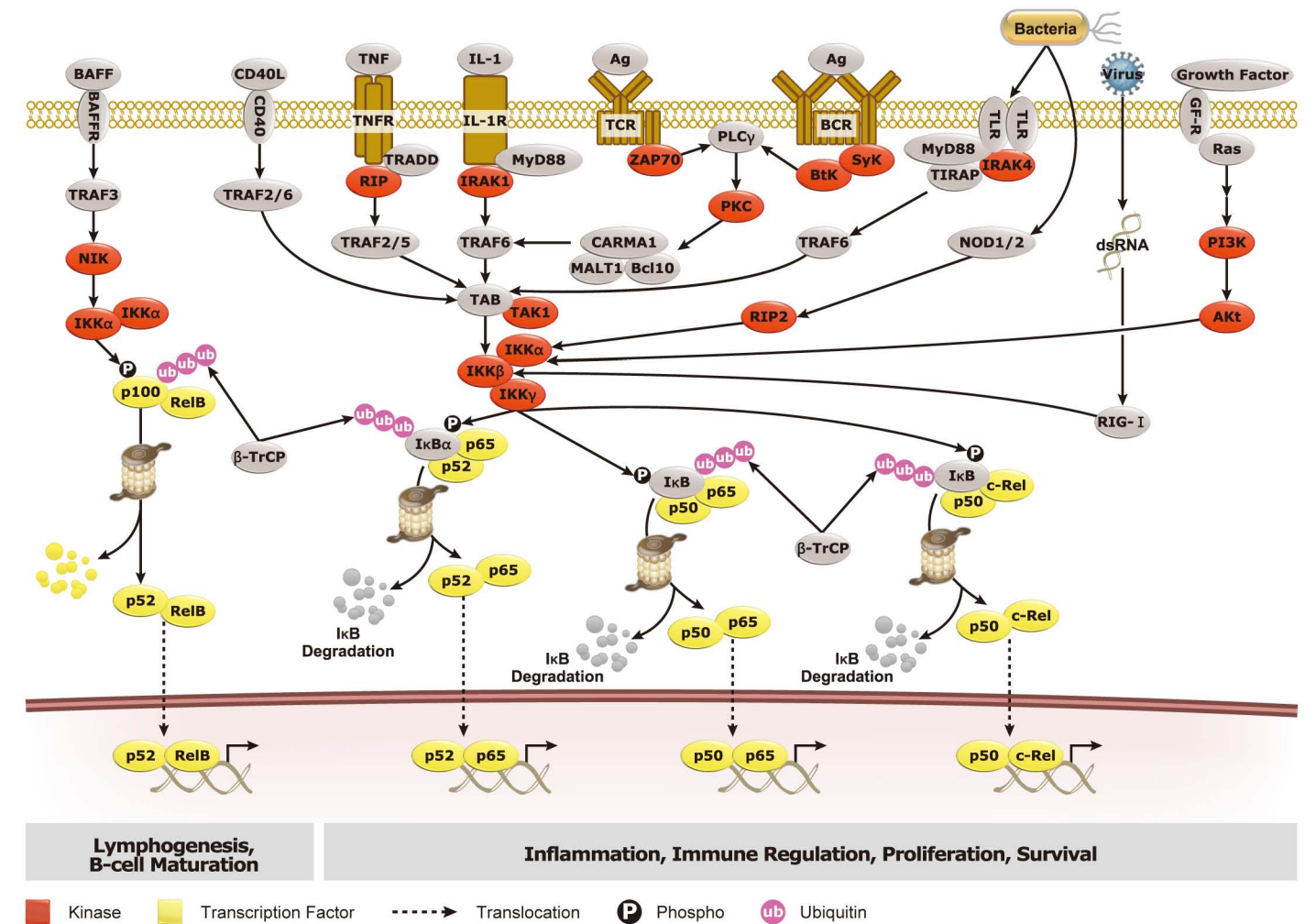
TANK antibody (GTX59886):
WB analysis of mouse small intestine tissue lysate.

Application Reference

NAK antibody [108A429] (GTX12116)

Ogasawara, N. et al. (2011) J Clin Biochem Nutr. 48:154-60. (ICC/IF, IHC, WB; Hu)

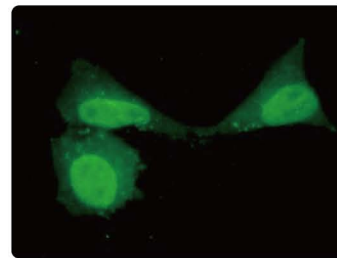
NF κ B Pathway



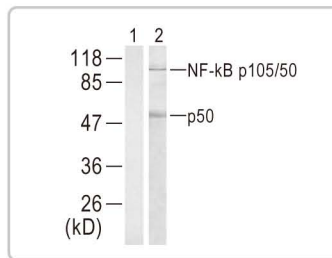
Nuclear factor- κ B (NF κ B) is an ubiquitous transcription factor. It works only when two members form a heterodimer that comprises one class I member (p50 or p52) and one class II member (p65/RelA, RelB or c-Rel). In the cytoplasm, NF- κ B heterodimer is inhibited by I κ B (inhibitor of NF κ B). Upon activation by a variety of stimuli, including cytokines, T- and B- cell mitogens, virus and stress, I κ B is phosphorylated by IKK (I κ B kinase) and then undergoing degradation through ubiquitin-proteasome system. The free NF κ B heterodimer then translocates to the nucleus and activate transcription. NF κ B signaling is critical for the regulations of immune responses, survival and proliferation. Misregulation of NF κ B pathway may cause inflammatory and autoimmune diseases, viral infection and cancer.

NFκB family

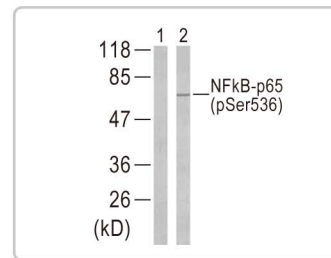
| | Cat. No. | Product name | Host & Clonality | Reactivity | Application |
|-------------------------|---|---|------------------|---------------------------|-----------------------------|
| NFκB p105/p50 | GTX100772 | NFκB p105/p50 antibody | Rb pAb | Hu | ICC/IF, WB |
| | Citation GTX110585 | NFκB p105/p50 antibody | Rb pAb | Hu | ICC/IF, IHC-P, WB |
| | GTX50377 | NFκB p105/p50 antibody | Rb pAb | Hu, Ms, Rat | IHC, WB |
| | Citation GTX27549 | NFκB p50 antibody | Rb pAb | Hu | ELISA, GSA, IP, WB |
| | phospho GTX79002 | NFκB p105/p50 (phospho Ser337) antibody | Rb pAb | Hu, Ms, Rat | IHC, WB |
| | phospho GTX85623 | NFκB1 (phospho Ser893) antibody | Rb pAb | Hu | IHC-P, WB |
| | phospho GTX78998 | NFκB p105/p50 (phospho Ser907) antibody | Rb pAb | Hu | IHC, WB |
| | phospho GTX50324 | NFκB p105/p50 (phospho Ser927) antibody | Rb pAb | Hu, Ms, Rat | ICC/IF, IHC, WB |
| phospho GTX50279 | NFκB p105/p50 (phospho Ser932) antibody | Rb pAb | Hu, Ms, Rat | IHC, WB | |
| NFκB p100/p52 | GTX50610 | NFκB p100/p52 antibody | Rb pAb | Hu, Ms | ICC/IF, IHC, WB |
| | GTX101150 | NFκB p100 antibody | Rb pAb | Hu, Ms | WB |
| | GTX27972 | NFκB p52 antibody | Rb pAb | Hu, Ms, Rat | IHC, IP, WB |
| | phospho GTX79000 | NFκB p100/p52 (phospho Ser865) antibody | Rb pAb | Hu, Ms, Rat | ICC/IF, IHC, WB |
| phospho GTX79001 | NFκB p100/p52 (phospho Ser869) antibody | Rb pAb | Hu, Ms, Rat | ICC/IF, IHC, WB | |
| NFκB p65 / Rel A | GTX102090 | NFκB p65 antibody | Rb pAb | Hu | ICC/IF, IHC-P, WB |
| | GTX61185 | NFκB p65 antibody [E379] | Rb mAb | Hu, Ms | FACS, ICC/IF, IHC-P, IP, WB |
| | GTX50371 | NFκB p65 antibody | Rb pAb | Hu, Ms, Rat | ICC/IF, IHC, WB |
| | GTX27970 | NFκB p65 antibody | Rb pAb | Hu, Ms, Rat | IHC-P, IP, WB |
| | GTX13594 | NFκB p65 antibody [112A1021] | Ms mAb | Hu, Ms, Cow, Mk, Pig, Rat | FACS, IHC-P, WB |
| | phospho GTX50097 | NFκB p65 (phospho Thr254) antibody | Rb pAb | Hu, Ms, Rat | ICC/IF, IHC, WB |
| | phospho GTX85622 | NFκB p65 (phospho Ser276) antibody | Rb pAb | Hu, Ms, Rat | ELISA, IHC-P, WB |
| | phospho GTX78995 | NFκB p65 (phospho Ser311) antibody | Rb pAb | Hu, Ms, Rat | IHC, WB |
| | phospho GTX78994 | NFκB p65 (phospho Thr435) antibody | Rb pAb | Hu, Ms, Rat | ICC/IF, IHC, WB |
| | phospho GTX50219 | NFκB p65 (phospho Thr505) antibody | Rb pAb | Hu | IHC, WB |
| | phospho GTX50254 | NFκB p65 (phospho Ser529) antibody | Rb pAb | Hu, Ms, Rat | ICC/IF, IHC, WB |
| phospho GTX50098 | NFκB p65 (phospho Ser536) antibody | Rb pAb | Hu, Ms, Rat | ICC/IF, IHC, WB | |
| RelB | GTX102333 | Rel B antibody | Rb pAb | Hu, Ms | IHC-P, WB |
| | GTX61291 | Rel B antibody [EP613Y] | Rb mAb | Hu | ICC/IF, IHC-P, IP, WB |
| | phospho GTX78951 | Rel B (phospho Ser552) antibody | Rb pAb | Hu, Ms, Rat | IHC, WB |
| | phospho GTX50283 | Rel B (phospho Ser573) antibody | Rb pAb | Hu, Ms | IHC, WB |
| c-Rel | GTX62544 | c-Rel antibody [EPR2558] | Rb mAb | Hu | ICC/IF, IHC-P, IP, WB |
| | GTX74165 | c-Rel antibody | Rb pAb | Hu | ELISA, GSA, IP, WB |



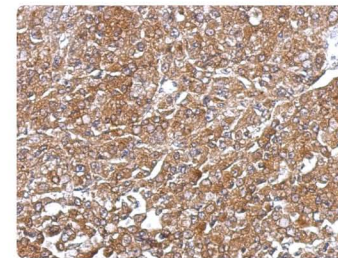
NFκB p105/p50 antibody (GTX110585):
ICC/IF analysis of PFA-fixed HeLa cells.



NFκB p105/p50 antibody (GTX50377):
WB analysis of HT29 cell lysate using (1) blocking peptide-preincubated and (2) un-incubated GTX50377.



NFκB p65 (phospho Ser536) antibody (GTX50098):
WB analysis of (1) untreated and (2) TNF-treated HepG2 cells.



RelB antibody (GTX102333):
IHC-P analysis of HeLa xenograft.

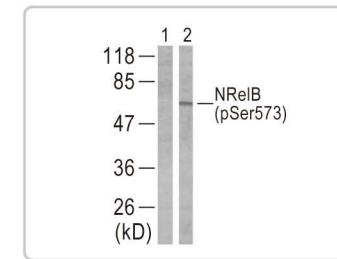
Application Reference

NFκB p105/p50 antibody (GTX110585)

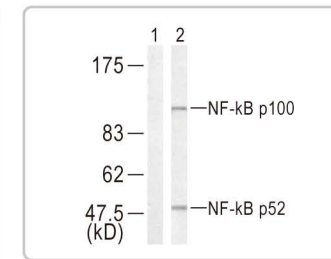
Koya, T. et al. (2012) Am J Physiol Heart Circ Physiol. 303:H96-105.

NFκB p50 antibody (GTX27549)

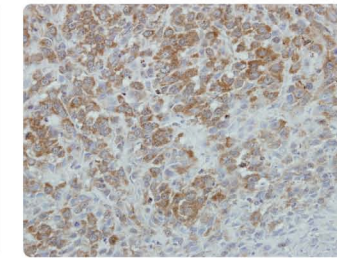
Adrianto, I. et al. (2011) Nat Genet. 43:253-8. (EMSA)



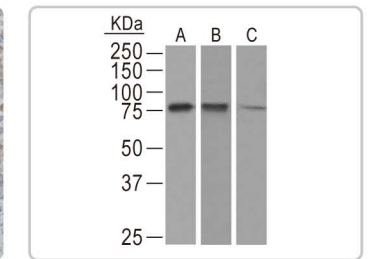
RelB (phospho Ser573) antibody (GTX50283):
WB analysis of (1) untreated and (2) TNF-treated HUVEC cells.



NFκB p100/p52 antibody (GTX50610):
WB analysis of HT29 cell lysate using (1) blocking peptide-preincubated and (2) un-incubated GTX50610.



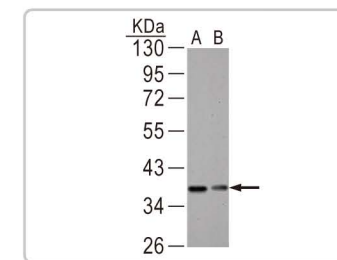
NFκB p65 antibody (GTX102090):
IHC-P analysis of A549 xenograft.



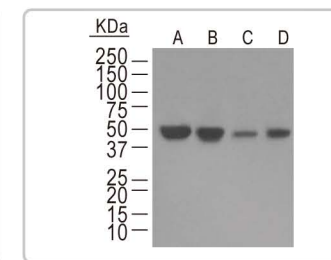
c-Rel antibody [EPR2558] (GTX62544):
WB analysis of cell lysate. A) Daudi; B) HuT-78; C) K562.

IκB family

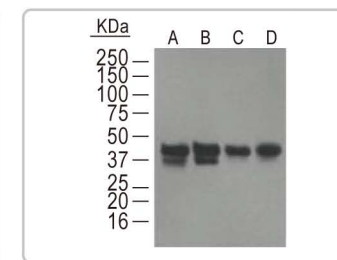
| | Cat. No. | Product name | Host & Clonality | Reactivity | Application |
|-------------------------|-------------------------------------|---|------------------|-----------------|-----------------------|
| IκBα | GTX110521 | IκBα antibody | Rb pAb | Hu, Ms | ICC/IF, WB |
| | GTX61054 | IκBα antibody [E130] | Rb mAb | Hu, Ms, Rat | ICC/IF, IHC-P, IP, WB |
| | GTX50468 | IκBα antibody | Rb pAb | Hu, Ms, Rat | ICC/IF, IHC, WB |
| | GTX12134 | IκBα antibody [6A920] | Ms mAb | Hu, Ms | IP, WB |
| | phospho GTX62342 | IκBα (phospho Ser32) antibody [EPR3148] | Rb mAb | Hu | ICC/IF, IP, WB |
| phospho GTX50209 | IκBα (phospho Ser32/Ser36) antibody | Rb pAb | Hu, Ms, Rat | ICC/IF, IHC, WB | |
| phospho GTX50681 | IκBα (phospho Tyr42) antibody | Rb pAb | Hu, Ms, Rat | IHC, WB | |
| IκBβ | GTX63120 | IκBβ antibody [EPR5037] | Rb mAb | Hu | ICC/IF, IHC-P, IP, WB |
| | GTX27547 | IκBβ antibody | Rb pAb | Hu, Ms, Rat | ELISA, IP, WB |
| | GTX82797 | IκBβ antibody [7B4] | Ms mAb | Hu | ELISA, ICC/IF, IHC |
| | phospho GTX50317 | IκBβ (phospho Ser23) antibody | Rb pAb | Hu, Ms, Rat | IHC-P |
| IκBε | GTX63006 | IκBε antibody [EPR901(2)] | Rb mAb | Hu | ICC/IF, IHC-P, IP, WB |
| | GTX50609 | IκBε antibody | Rb pAb | Hu, Ms | IHC, WB |
| | phospho GTX50252 | IκBε (phospho Ser22) antibody | Rb pAb | Hu, Ms | IHC, WB |
| Bcl-3 | GTX59616 | Bcl-3 antibody | Rb pAb | Hu, Ms, Rat | IHC, IP |
| | GTX15046 | Bcl-3 antibody [Ham150-3.5] | Hm mAb | Hu, Ms | ELISA, WB |



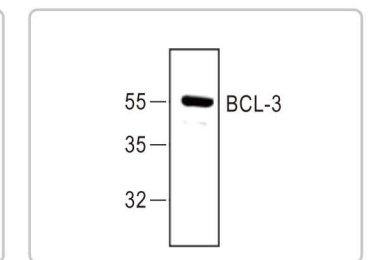
IκBα antibody (GTX110521):
WB analysis of cell lysates. A) BCL-1; B) C2C12.



IκBβ antibody [EPR5037] (GTX63120):
WB analysis of cell lysates. A) Jurkat; B) HeLa; C) THP-1; D) MCF-7.



IκBε antibody [EPR901(2)] (GTX63006):
WB analysis of cell lysates. A) THP-1; B) Jurkat; C) HeLa; D) A375.



Bcl-3 antibody (GTX59616):
WB analysis of Jurkat cell lysate.

IKK family

| | Cat. No. | Product name | Host & Clonality | Reactivity | Application |
|------|-------------------------|---------------------------------------|------------------|-------------|-----------------------------|
| IKKα | GTX61247 | IKKα antibody [Y463] | Rb mAb | Hu, Ms, Rat | FACS, ICC/IF, IHC-P, IP, WB |
| | GTX50469 | IKKα antibody | Rb pAb | Hu, Ms, Rat | IHC, WB |
| | GTX12138 | IKKα antibody [14A231] | Ms mAb | Hu, Ms | IP, WB |
| | phospho GTX50190 | IKKα (phospho Thr23) antibody | Rb pAb | Hu, Ms, Rat | IHC, WB |
| | phospho GTX17943 | IKKα (phospho Ser176/Ser180) antibody | Rb pAb | Hu, Ms | WB |