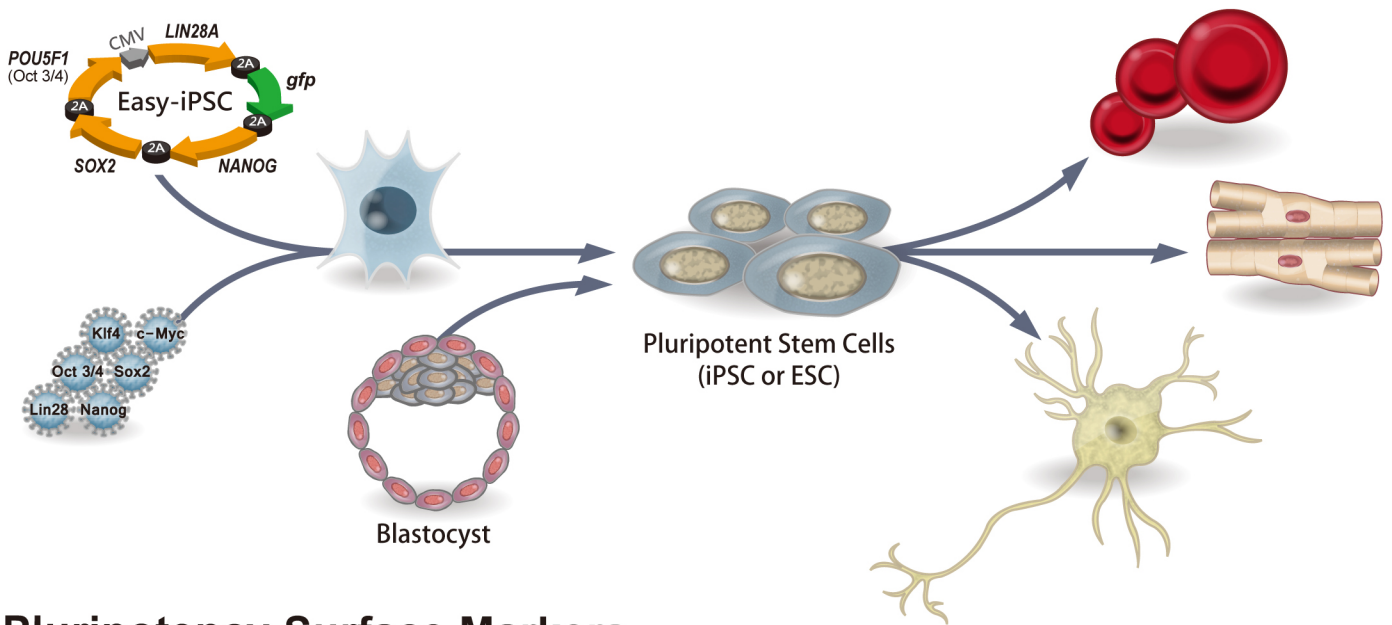
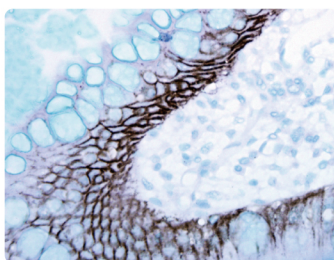


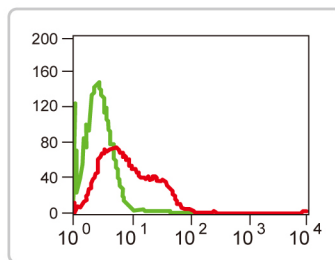
Pluripotency Markers



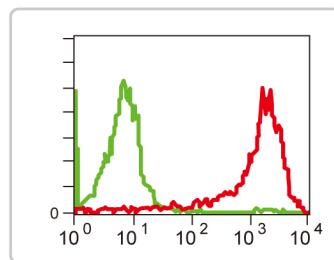
Pluripotency Surface Markers



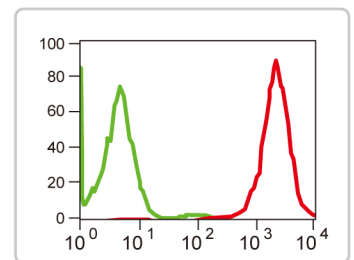
E-Cadherin antibody (GTX100443)



TRA-1-81 antibody [TRA-1-81] (GTX48034) (red)



SSEA-4 antibody [MC-813-70] (GTX48037) (red)



SSEA-5 antibody [8e11] (GTX70019) (red)

© Citation

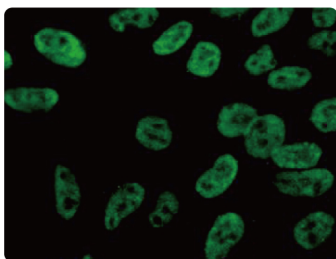
	Cat. No.	Product name	Host & Clonality	Reactivity	Application
ABCG2	GTX100437	ABCG2 antibody	Rb pAb	Hu, Ms	IHC-P, WB
	Ⓢ GTX23380	ABCG2 / BCRP antibody [BXP-21]	Ms mAb	Hu	ICC/IF, IHC-Fr, IHC-P, WB
CD9	GTX100912	CD9 antibody	Rb pAb	Hu	WB
	Ⓢ GTX75373	CD9 antibody [72F6]	Ms mAb	Hu	IHC-Fr, IHC-P
	Ⓢ GTX78260	CD9 antibody [MEM-61]	Ms mAb	Hu	FACS, IP, WB
	GTX80172	CD9 antibody [EM-04]	Rat mAb	Ms	FACS, ICC/IF, IP, WB
CD24	GTX81029	CD24 antibody	Rb pAb	Hu	ELISA, FACS, IHC, WB
	GTX37755	CD24 antibody	Rb pAb	Hu, Ms, Rat	ELISA, WB
	GTX74945	CD24 antibody [SN3]	Ms mAb	Hu	FACS, IHC-Fr
	GTX44235	CD24 antibody [91]	Rat mAb	Ms	FACS, IHC-Fr, IP
CD30	GTX37452	CD30 antibody	Rb pAb	Hu, Ms, Rat	ELISA, IHC-P, WB
	GTX71958	CD30 antibody [Ber-H2]	Ms mAb	Hu	FACS, IHC-Fr, IHC-P
	GTX75239	CD30 antibody [YMSM 636.4.10]	Rat mAb	Ms	ELISA, FACS

Pluripotency Surface Markers

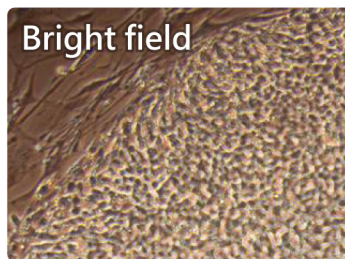
© Citation

	Cat. No.	Product name	Host & Clonality	Reactivity	Application
E-Cadherin / CD324	GTX100443	E-Cadherin antibody	Rb pAb	Hu	ICC/IF, IHC-P, WB
	GTX75056	E-Cadherin antibody [6F9]	Ms mAb	Hu	IHC-Fr, WB
	GTX82753	E-Cadherin antibody [7H12]	Ms mAb	Hu, Ms, Mk	ELISA, ICC/IF, IHC
	GTX11512	E-Cadherin antibody [DECMA-1]	Rat mAb	Ms, Dog	ICC/IF, IHC-Fr, IP, WB
Gp200 / GCTM-2	GTX104764	Gp200 / PODXL antibody	Rb pAb	Hu, Ms	ICC/IF, WB
	GTX72343	Gp200 antibody [PN-15]	Ms mAb	Hu, Rat	IHC-P, WB
Integrin α6 / CD49f	GTX100565	Integrin α6 antibody	Rb pAb	Hu	WB
	GTX75046	CD49f antibody [450-30A]	Ms mAb	Hu	FACS, IHC-Fr
	GTX76413	Integrin α6 / CD49f antibody [NKI-GoH3]	Rat mAb	Hu, Ms	FACS, IHC-Fr, IP
Integrin β1 / CD29	GTX20035	Integrin β1 antibody [4B7]	Ms mAb	Hu	FACS, ICC/IF, IHC-P, IP
	GTX28238	Integrin β1 antibody [MEM-101A]	Ms mAb	Hu, Ms	FACS, IP, WB
	GTX42117	Integrin β1 / CD29 antibody [HM beta 1-1]	Hm mAb	Ms, Rat	FACS, IP
TRA-1-60	GTX48033	TRA-1-60 antibody [TRA-1-60R]	Ms mAb	Hu	FACS, ICC/IF, IHC-P, IP, WB
TRA-1-81	GTX48034	TRA-1-81 antibody [TRA-1-81]	Ms mAb	Hu	FACS, ICC/IF, IHC-P, IP, WB
SSEA-1 / CD15	GTX37536	SSEA-1 / CD15 antibody	Rb pAb	Hu, Ms, Rat	ELISA, WB
	GTX40137	SSEA-1 / CD15 antibody [28]	Ms mAb	Hu	FACS, IHC-F, IHC-Fr, IP
	GTX48035	SSEA-1 antibody [MC-480]	Ms mAb	Hu, Ms	FACS, ICC/IF, IHC-P, IP, WB
SSEA-3	GTX48036	SSEA-3 antibody [MC-631]	Rat mAb	Hu, Ms	FACS, ICC/IF, IHC, IP, WB
SSEA-4	GTX48037	SSEA-4 antibody [MC-813-70]	Ms mAb	Hu, Ms, Ch, Dog, Mk, Rb	FACS, IHC, IP, WB
SSEA-5	GTX70019	SSEA-5 antibody [8e11]	Ms mAb	Hu	FACS, ICC/IF

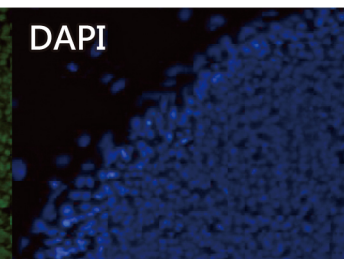
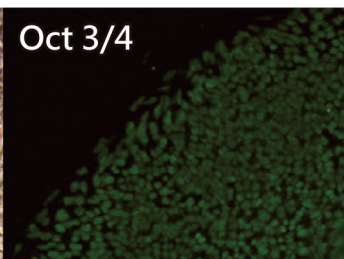
iPSC Factors



Nanog antibody (GTX100863)



Oct3/4 antibody (GTX100622)



© Citation

	Cat. No.	Product name	Host & Clonality	Reactivity	Application
c-Myc	GTX109636	c-Myc antibody	Rb pAb	Hu, Ms	FACS, ICC/IF, WB
	GTX628459	c-Myc antibody [GT168]	Mouse	Hu	FACS, WB
	GTX80249	c-Myc antibody [9E10]	Ms mAb	Hu, Other	FACS, IHC-P, IP, WB
KLF4	GTX101508	KLF4 antibody	Rb pAb	Hu, Ms	FACS, WB
	GTX101509	KLF4 antibody	Rb pAb	Hu	ICC/IF, WB
	GTX37241	KLF4 antibody	Ms mAb	Hu	ELISA, WB
	GTX82798	KLF4 antibody [1E5]	Ms mAb	Hu	ELISA, ICC/IF, IHC
Lin28	GTX121923	LIN28 antibody	Rb pAb	Hu, Ms	FACS, IHC-P, WB
	GTX628138	LIN28 antibody [GT717]	Ms mAb	Hu	FACS, IHC-P, WB
	GTX628139	LIN28 antibody [GT1086]	Ms mAb	Hu	FACS, IHC-P, WB
Nanog	GTX100863	Nanog antibody	Rb pAb	Hu, Ms	ELISA, ICC/IF, WB
	GTX627421	Nanog antibody [GT3312]	Ms mAb	Hu, Ms	FACS, WB
	GTX83107	Nanog antibody [1E6C4]	Ms mAb	Hu	ELISA, ICC/IF
Oct3/4	GTX100622	Oct3/4 antibody	Rb pAb	Hu, Ms	FACS, ICC/IF, WB
	GTX101497	Oct3/4 antibody	Rb pAb	Hu, Ms	FACS, ICC/IF, IHC-P, WB
	GTX627419	OCT3/4 antibody [GT486]	Ms mAb	Hu, Ms	FACS, IHC-P, IP, WB
	GTX627423	OCT3/4 [GT735] antibody	Ms mAb	Hu	FACS, IP, WB
Sox2	GTX101506	SOX2 antibody	Rb pAb	Hu, Ms	FACS, ICC/IF, WB
	GTX101507	SOX2 antibody	Rb pAb	Hu, Ms	FACS, ICC/IF, IHC-P, WB
	GTX627404	SOX2 antibody [GT1876]	Ms mAb	Hu, Zfsh	FACS, WB
	GTX627405	SOX2 antibody [GT1352]	Ms mAb	Hu	FACS, IHC-P, WB

International

Tel 886.3.6208988
 Fax 886.3.6209098
 Address 6F-2, No.89, Dongmei Rd., Hsinchu 300, Taiwan (R.O.C.)
 E-mail info@genetex.com

USA

Toll-free 1.877.GeneTex(1.877.436.3839)
 Fax 1.949.309.2888
 Address 2456 Alton Parkway, Irvine, CA 92606 USA
 E-mail info@genetex.com



Join us on Facebook
www.facebook.com/GeneTextW