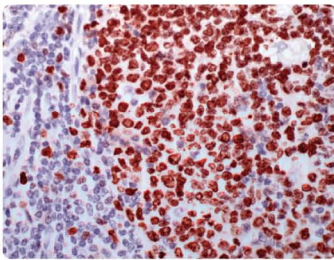
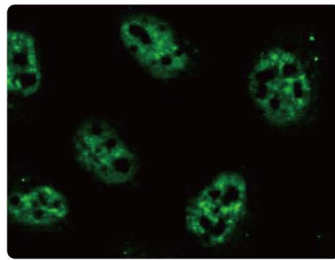


Proliferation & Mitotic Markers

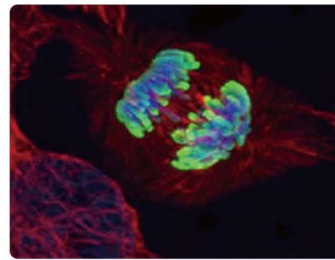
Proliferation & Mitotic Markers



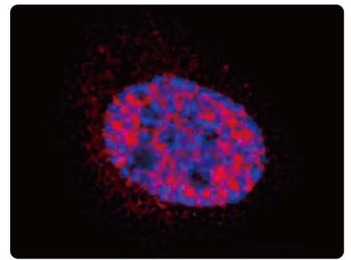
Ki67 antibody [SP6] (GTX16667):
IHC analysis.



PCNA antibody [339] (GTX70298):
ICC/IF analysis of PFA-fixed A431 cells.



Histone H3 (phospho Ser10) antibody (GTX11304):
ICC/IF analysis of PFA-fixed HeLa cells (green) (co-stained with Hoechst and tubulin (red)).

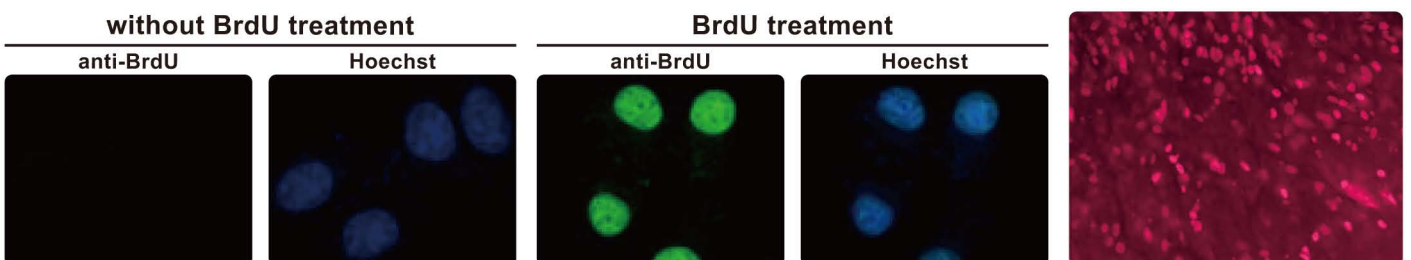


Mitosin antibody [14C10 1D8] (GTX70137):
Confocal IF analysis of PFA-fixed U2OS cells.

P Phospho **C** Citation

	Cat. No.	Product name	Host & Clonality	Reactivity	Application
Ki67	C GTX20833	Ki67 antibody	Rb pAb	Hu, Ms, Rat	ICC/IF, IHC-P
	C GTX16667	Ki67 antibody [SP6]	Rb mAb	Hu, Ms, Rat	ICC/IF, IHC-P, WB
	GTX83375	Ki67 antibody [4A1]	Ms mAb	Hu	ELISA, IHC
	GTX26526	Ki67 antibody [PP-67]	Ms mAb	Hu	IHC-Fr, IHC-P, WB
PCNA	C GTX100539	PCNA antibody	Rb pAb	Hu, Ms, Rat	ICC/IF, IHC-P, WB
	GTX70298	PCNA antibody [339]	Ms mAb	Hu	ELISA, ICC/IF, WB
	GTX40237	PCNA antibody [PC8]	Ms mAb	Hu	IHC-P, IP, WB
	C GTX20029	PCNA antibody [PC10]	Ms mAb	Hu, Ms, Rat	FACS, ICC/IF, IHC-Fr, IHC-P, IP, WB
phospho H3	P GTX128116	Histone H3 (phospho Ser10) antibody	Rb pAb	Hu, Ms	ICC/IF, IHC-P, WB
	P GTX12182	Histone H3 (phospho Ser10) antibody	Rb pAb	Hu, Ms, Cow, Rat, Xi	ICC/IF, WB
	P GTX13924	Histone H3 (phospho Ser28) antibody [117C826]	Ms mAb	Hu	WB
FoxM1 / MPM2	C GTX14581	FoxM1 / MPM2 antibody [O.T.181]	Ms mAb	Hu, Yeast	ELISA, ICC/IF, WB
Mitosin / Cenp-F	GTX30232	Mitosin antibody	Rb pAb	Hu	ICC/IF, IP, WB
	C GTX77645	Mitosin antibody [7F11.2]	Ms mAb	Hu	ICC/IF, IHC
	C GTX70137	Mitosin antibody [14C10 1D8]	Ms mAb	Hu	FACS, ICC/IF, IHC-Fr, IHC-P, IP, WB

Exogenous Proliferation Label



BrdU antibody (GTX128091):
ICC/IF analysis of PFA-fixed HeLa cells with or without BrdU treatment (co-stained with Hoechst).

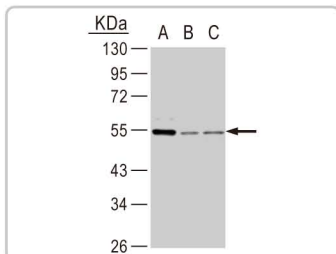
BrdU antibody (GTX21893):
ICC/IF analysis of cultured cells.

Exogenous Proliferation Label

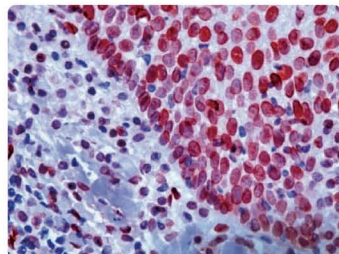
Citation

	Cat. No.	Product name	Host & Clonality	Reactivity	Application
BrdU	GTX128091	BrdU antibody	Rb pAb	-	ICC/IF
	GTX28039	BrdU antibody [MoBu-1]	Ms mAb	-	FACS, ICC/IF, IHC-P
	GTX26326	BrdU antibody [BU1/75 (ICR1)]	Rat mAb	-	FACS, ICC/IF, IHC-Fr, IHC-P
	GTX44314	BrdU antibody [B684M]	Rat mAb	-	IHC-P, FACS, ICC/IF, ICC/IF, IHC-Fr
	GTX21893	BrdU antibody	Sh pAb	-	ELISA, H, ICC/IF, IHC-Fr, IHC-P, IP, WB

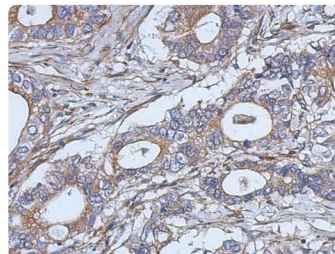
Tumor Proliferation Markers



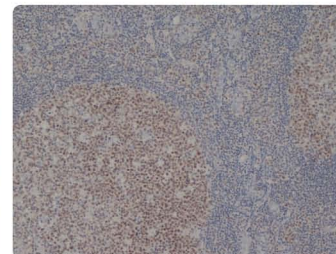
Cyclin A antibody (GTX103042):
WB analysis of (A) 293T, (B) HeLa and (C) A375 cell lysates.



E2F1 antibody [KH95] (GTX24070):
IHC analysis of human tonsil.



IL-2 antibody (GTX101138):
IHC-P analysis of gastric cancer.



MCM2 antibody [CRCT2.1 (D1.9H5)] (GTX75459):
IHC-P analysis of human tonsil tissue.

Citation

	Cat. No.	Product name	Host & Clonality	Reactivity	Application
Cyclin A	GTX103042	Cyclin A antibody	Rb pAb	Hu, Ms, Rat	ICC/IF, IHC-P, WB
	GTX27956	Cyclin A antibody	Rb pAb	Hu, Ms, Rat	IHC-Fr, IP, WB
	GTX20038	Cyclin A antibody [E23.1]	Ms mAb	Hu, Ms, Cow, Rat	IHC-Fr, IP, WB
	GTX20039	Cyclin A antibody [E67.1]	Ms mAb	Hu, Ms, Cow, Hm	IHC-P, IP, WB
Cyclin D1	GTX112874	Cyclin D1 antibody	Rb pAb	Hu, Ms	WB
	GTX16663	Cyclin D1 antibody [SP4]	Rb pAb	Hu, Ms, Rat	IHC-P, WB
	GTX26152	Cyclin D1 antibody [CD1.1]	Ms mAb	Hu, Rat	ELISA, FACS, ICC/IF, IHC-Fr, IHC-P, IP, WB
	GTX10540	Cyclin D1 antibody [DCS-6]	Ms mAb	Hu, Ms, Mk, Rat	ICC/IF, IHC-P, IP, WB
E2F1	GTX70163	E2F1 antibody [16G7]	Mouse	Hu, Ms	ICC/IF, IHC-P, IP, WB
	GTX70165	E2F1 antibody [18E10]	Mouse	Hu	ICC/IF, IP, WB
	GTX24070	E2F1 antibody [KH95]	Mouse	Hu, Ms	IHC-Fr, IHC-P
IL-2	GTX101138	IL-2 antibody	Rabbit	Hu	IHC-P, WB
	GTX13777	IL-2 antibody [N7.48A]	Mouse	Hu	FACS, ICC/IF, IHC-P
MCM2	GTX103071	MCM2 antibody	Rb pAb	Hu	WB
	GTX24461	MCM2 antibody	Rb pAb	Hu	IP, WB
	GTX75459	MCM2 antibody [CRCT2.1 (D1.9H5)]	Ms mAb	Hu	IHC-Fr, IHC-P, WB
MCM7	GTX110278	MCM7 antibody	Rb pAb	Hu	ICC/IF, IHC-P, WB
	GTX22360	MCM7 antibody [47DC141]	Ms mAb	Hu, Ms, Dog, Rat, XI	ICC/IF, IHC-P, IP, WB
TOPO IIa	GTX100689	Topoisomerase IIa antibody	Rb pAb	Hu	IHC-P, WB
	GTX22987	Topoisomerase IIa antibody	Rb pAb	Hu	ICC/IF, IHC-P, IP, WB
	GTX23111	Topoisomerase IIa antibody [3F6]	Ms mAb	Hu	IHC-P
	GTX16844	Topoisomerase IIa antibody [SWT3D1]	Ms mAb	Hu	IHC-P



www.genetex.com

International

Tel 886.3.6208988
Fax 886.3.6209098
Address 6F-2, No.89, Dongmei Rd., Hsinchu 300, Taiwan (R.O.C.)
E-mail info@genetex.com

USA

Toll-free 1.877.GeneTex(1.877.436.3839)
Fax 1.949.309.2888
Address 2456 Alton Parkway, Irvine, CA 92606 USA
E-mail info@genetex.com



Join us on Facebook
www.facebook.com/GeneTexTW