

Other Tags

Star Review Citation

Cat. No.	Product	Host & Clonality	Application
GTX19398	HSV tag antibody (Agarose)	Gt pAb	IP
GTX23859	KT3 tag antibody	Rb pAb	ELISA, ICC/IF, WB
GTX12216	KT3 tag antibody (HRP)	Gt pAb	ELISA, ICC/IF, IHC, WB
GTX78390	S tag antibody	Rb pAb	ELISA, IHC, IP, WB
GTX39149	S-Tag antibody [SBSTAGa]	Ms mAb	ELISA, FACS, ppf
GTX19321	S tag antibody	Gt pAb	ELISA, ICC/IF, WB
GTX19369	S tag antibody (Agarose)	Gt pAb	IP
GTX30555	T7 antibody	Rb pAb	ELISA, ICC/IF, IHC, WB
GTX29138	T7 tag antibody	Gt pAb	ELISA, ICC/IF, WB
GTX21230	T7 tag antibody (Agarose)	Gt pAb	IP
GTX19257	VSV-G tag antibody	Rb pAb	ELISA, ICC/IF, WB
GTX23861	VSV-G tag antibody	Gt pAb	ELISA, ICC/IF, WB
GTX41487	VSV-G tag antibody (Agarose)	Gt pAb	IP

Representative Publications

GFP antibody (GTX113617)

Nature. 2013 Jun 20;498(7454):325-31. (WB)
Vet Microbiol. 2013 Sep 27;166(1-2):11-21. (IP)

RFP (dsRed) antibody (GTX127897)

Mol Microbiol. 2014 Feb;91(3):472-93. (WB)

GST antibody [3G10] (GTX70195)

Nat Cell Biol. 2009 Aug;11(8):967-72. (IP)
J Biol Chem. 2003 Jan 24;278(4):2686-91. (WB)

Myc Tag antibody (GTX115046)

Nucleic Acids Res. 2014 Aug 7. pii: gku705. (WB)

Myc tag antibody (HRP) (GTX21261)

Nature. 2011 May 15;474(7351):403-6. (WB)
Cell. 2011 Apr 1;145(1):92-103. (WB)

HA Tag antibody [GT423] (GTX628489)

EMBO J. 2014 Apr 1;33(7):719-31. (WB)

V5 antibody (GTX117997)

Bone. 2014 Jul 12;67C:145-151. (WB)
PLoS One. 2013 May 23;8(5):e64529. (ICC/IF)

V5 antibody (Agarose) (GTX30570)

J Cell Sci. 2008 May 15;121(Pt 10):1613-23. (IP)

GFP antibody [GT859] (GTX628528)

Hum Mol Genet. 2014 May 15;23(10):2678-93. (IHC-Fr)
Cell Rep. 2013 Dec 12;5(5):1342-52. (IHC-Wm)

6x His antibody [GT359] (GTX628914)

Hepatology. 2014 May;59(5):1726-37. (ELISA)

c-Myc antibody [N1], N-term (GTX109636)

J Cell Physiol. 2012 Dec;227(12):3803-11. (WB)
Toxicol Sci. 2011 Oct;123(2):480-90. (WB)

Myc tag antibody (Agarose) (GTX21253)

PLoS Biol. 2011 Aug;9(8):e1001121. (IP)
Cell. 2009 Apr 17;137(2):344-55. (IP)

HA Tag antibody (GTX115044)

Proc Natl Acad Sci U S A. 2013 Sep 24;110(39):15776-81. (WB)
PLoS Pathog. 2012 Sep;8(9):e1002904. (ICC/IF)

DDDDK antibody (GTX115043)

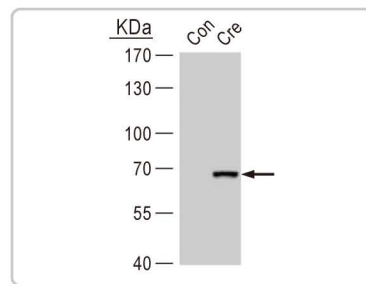
PLoS One. 2014 Mar 21;9(3):e92949. (IP, WB)

Firefly Luciferase antibody (GTX125848)

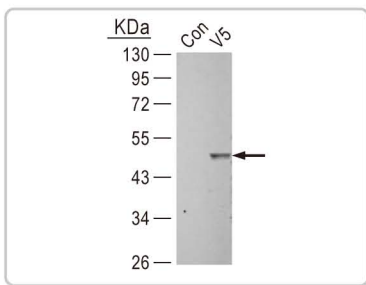
PLoS One. 2014 Jul 15;9(7):e102225. (WB)

T7 antibody (GTX30555)

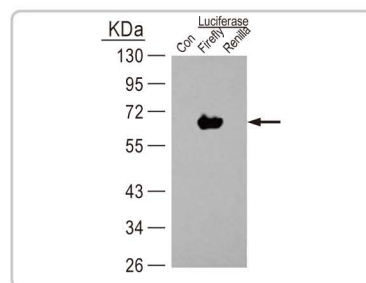
J Neurosci. 2011 Jan 5;31(1):3-14. (WB)



Cre recombinase antibody [GT10212] (GTX629479):
 WB analysis with Cre recombinase antibody on (Lane1) control and (Lane2) HeLa cells expressing Cre recombinase.



V5 Tag antibody [GT1071] (GTX628529):
 WB analysis with V5 Tag antibody on (Lane1) non-transfected 293T cells and (Lane2) 293T cells expressing V5-tagged protein.

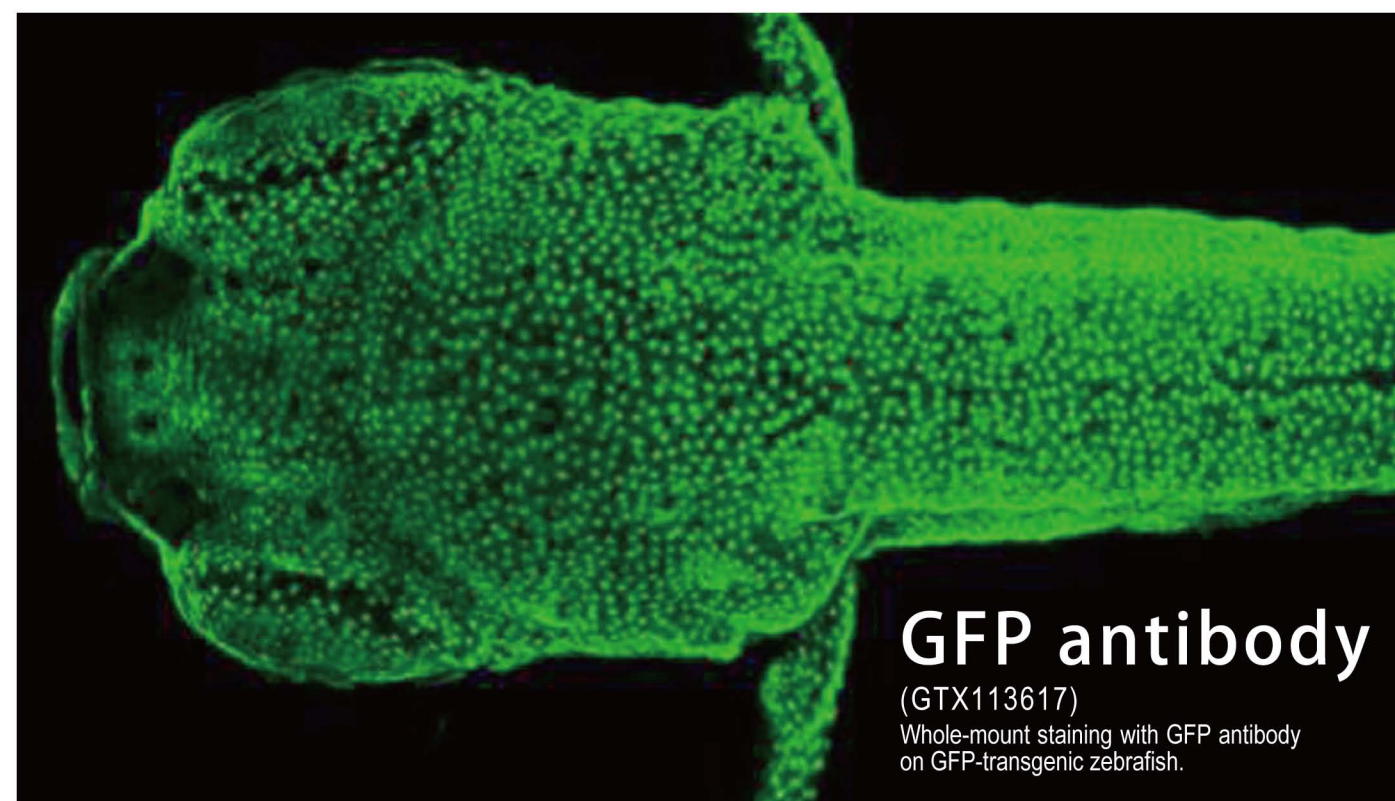


Firefly Luciferase antibody (GTX125849):
 WB analysis with Firefly Luciferase antibody on (Lane1) non-transfected 293T cells, and 293T cells expressing (Lane2) firefly luciferase and (Lane3) renilla luciferase.



Your Expertise, Our Antibodies, Accelerated Discovery.

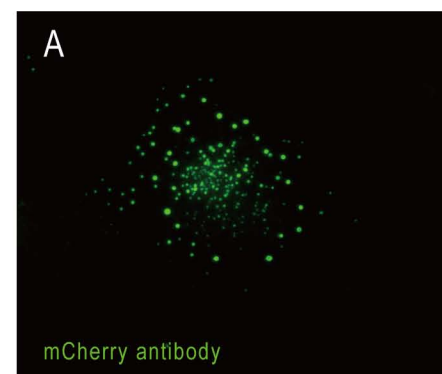
Antibodies for Fluorescent Proteins & Epitope Tags with Highly Reliable Sensitivity!



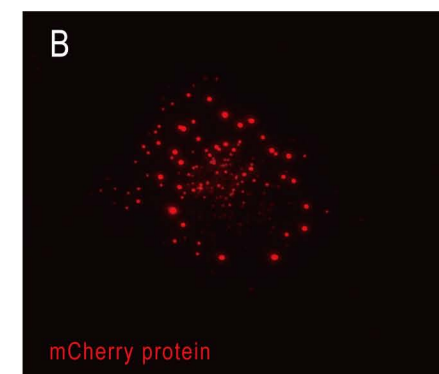
GFP antibody

(GTX113617)

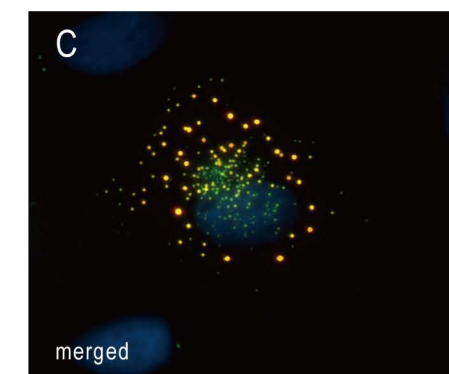
Whole-mount staining with GFP antibody on GFP-transgenic zebrafish.



mCherry antibody



mCherry protein



merged

mCherry antibody (GTX128508)

ICC/IF staining with mCherry antibody on HeLa cells expressing mCherry-fused protein. (A) mCherry protein detected by mCherry antibody. (B) mCherry-fused protein exhibits red fluorescent signal. (C) Merged image with DAPI counterstain.



International

Tel 886.3.6208988
 Fax 886.3.6209098
 Address 6F-2, No.89, Dongmei Rd., Hsinchu 300, Taiwan (R.O.C.)
 E-mail international@genetex.com

USA

Toll-free 1.877.GeneTex(1.877.436.3839)
 Fax 1.949.309.2888
 Address 2456 Alton Parkway, Irvine, CA 92606 USA
 E-mail info@genetex.com



www.genetex.com

Epitope Tag Antibodies

Fluorescent Protein

Star Review Citation

Cat. No.	Product	Host & Clonality	Application
GTX113617	GFP antibody	Rb pAb	ICC/IF, IP, WB, IHC-Wm
GTX628528	GFP antibody [GT859]	Ms mAb	ELISA, ICC/IF, IP, WB, IHC-Wm
GTX21218	GFP antibody [9F9.F9]	Ms mAb	ELISA, ICC/IF, IHC, WB
GTX82564	GFP antibody [GF28R]	Ms mAb	ELISA, ICC/IF, IP, WB
GTX26673	GFP antibody	Gt pAb	ELISA, ICC/IF, IHC-P, IP, WB
GTX124117	GFP antibody	Chicken pAb	WB
GTX127897	RFP antibody	Rb pAb	ICC/IF, IP, WB
GTX628545	RFP antibody [GT1610]	Ms mAb	ICC/IF, IP, WB
GTX628898	RFP antibody [GT1433]	Ms mAb	IP, WB
GTX59862	RFP (dsRed) antibody	Rb pAb	ICC/IF, IP, WB
GTX82561	RFP antibody [RF5R]	Ms mAb	ELISA, ICC/IF, IHC, IP, WB
GTX128508	mCherry antibody	Rb pAb	ICC/IF, IP, WB
GTX128509	mCherry antibody	Rb pAb	IP, WB
GTX630144	mCherry antibody [GT235]	Ms mAb	WB
GTX630189	mCherry antibody [GT857]	Ms mAb	WB
GTX630195	mCherry antibody [GT844]	Ms mAb	WB
GTX59680	BFP antibody	Rb pAb	WB
GTX59717	CFP antibody	Rb pAb	WB
GTX59920	YFP antibody	Rb pAb	WB

6x His Tag

Star Review Citation

Cat. No.	Product	Host & Clonality	Application
GTX628914	6x His antibody [GT359]	Ms mAb	ELISA, ICC/IF, IP, WB
GTX628914-01	6x His antibody [GT359] (HRP)	Ms mAb	WB
GTX628921	6x His antibody [GT161]	Ms mAb	ELISA, WB
GTX115045	6x His antibody	Rb pAb	ELISA, IP, WB
GTX115045-01	6x His antibody (HRP)	Rb pAb	WB
GTX30500	6x His antibody	Gt pAb	ELISA, ICC/IF, WB

GST Tag

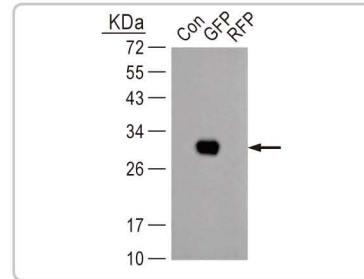
Star Review Citation

Cat. No.	Product	Host & Clonality	Application
GTX70195	GST tag antibody [3G10]	Ms mAb	IP, WB
GTX110736	GST antibody	Rb pAb	IP, WB
GTX114099	GST antibody (HRP)	Rb pAb	WB
GTX74914	GST antibody [vpg66] (Biotin)	Ms mAb	ELISA, WB
GTX77388	GST antibody (FITC)	Rb pAb	ELISA, WB
GTX30509	GST antibody	Rb pAb	ELISA, ICC/IF, WB
GTX18183	GST antibody [GST.B6]	Ms mAb	IHC, IP, WB
GTX26612	GST antibody	Gt pAb	Dot, ELISA, IP, WB
GTX30516	GST antibody (Agarose)	Gt pAb	IP

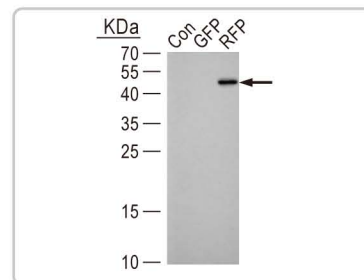
Myc Tag

Star Review Citation

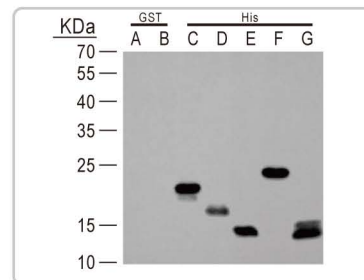
Cat. No.	Product	Host & Clonality	Application
GTX109636	c-Myc antibody [N1], N-term	Rb pAb	FACS, ICC/IF, WB, ChIP assay
GTX103436	c-Myc antibody	Rb pAb	IP, WB, ChIP assay
GTX115046	Myc Tag antibody	Rb pAb	ICC/IF, IP, WB
GTX628259	Myc Tag antibody [GT0002]	Ms mAb	ICC/IF, IP, WB
GTX628259-01	Myc Tag antibody [GT9510] (HRP)	Ms mAb	WB
GTX29106	Myc tag antibody	Rb pAb	CC, ELISA, ICC/IF, IHC, IM, IP, WB
GTX20032	Myc tag antibody [9E10]	Ms mAb	ELISA, FACS, ICC/IF, IHC-Fr, IHC-P, WB
GTX10910	c-Myc antibody [JAC6]	Rat mAb	ICC/IF, IHC-Fr, IP, WB
GTX21253	Myc tag antibody (Agarose)	Gt pAb	IP
GTX21261	Myc tag antibody (HRP)	Gt pAb	ELISA, ICC/IF, WB



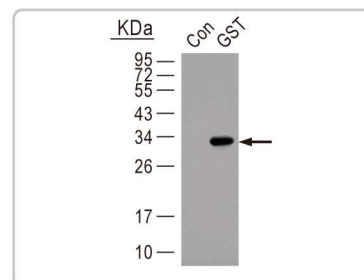
GFP antibody (GTX113617): WB analysis with GFP antibody on (Lane1) non-transfected 293T cells, (Lane2) GFP-transfected 293T cells, (Lane3) RFP-transfected 293T cells.



RFP antibody [GT1433] (GTX628898): WB analysis with RFP antibody on (Lane1) non-transfected 293T cells, (Lane2) GFP-transfected 293T cells, (Lane3) RFP-transfected 293T cells.



6x His antibody [GT359] (GTX628914): WB analysis with 6x His antibody on (A-B) GST-tagged proteins and (C-G) various His-tagged proteins.



GST tag antibody [3G10] (GTX70195): WB analysis with GST tag antibody on (Lane1) control and (Lane2) GST-tagged protein.

HA Tag

Star Review Citation

Cat. No.	Product	Host & Clonality	Application
GTX115044	HA tag antibody	Rb pAb	ICC/IF, IP, WB
GTX115044-01	HA Tag antibody (HRP)	Rb pAb	WB
GTX628489	HA Tag antibody [GT423]	Ms mAb	ICC/IF, IP, WB
GTX628902	HA Tag antibody [GT4810]	Ms mAb	ICC/IF, IP, WB
GTX629540	HA Tag antibody [GT134]	Ms mAb	IP, WB
GTX127376	HA Tag antibody	Chicken pAb	WB
GTX127376-01	HA Tag (IgY) antibody (HRP)	Chicken pAb	WB
GTX30545	HA antibody	Gt pAb	ELISA, ICC/IF, WB
GTX30552	HA tag antibody (Agarose)	Gt pAb	IP

DDDDK / Flag Tag

Star Review Citation

Cat. No.	Product	Host & Clonality	Application
GTX115043	DDDDK Tag antibody	Rb pAb	IP, WB
GTX629631	DDDDK Tag antibody [GT231]	Ms mAb	IP, WB
GTX629632	DDDDK Tag antibody [GT1423]	Ms mAb	IP, WB
GTX77452	DDDDK antibody	Chicken pAb	ELISA, IHC, WB

V5 Tag

Star Review Citation

Cat. No.	Product	Host & Clonality	Application
GTX117997	V5 Tag antibody	Rb pAb	ICC/IF, IP, WB
GTX628529	V5 Tag antibody [GT1071]	Ms mAb	ICC/IF, IP, WB
GTX628529-01	V5 Tag antibody [GT1071] (HRP)	Ms mAb	WB
GTX629069	V5 Tag antibody [GT1449]	Ms mAb	WB
GTX48681	V5 Epitope Tag antibody (DyLight488)	Rb pAb	ELISA, FACS, ICC/IF, WB
GTX48680	V5 Epitope Tag antibody (DyLight549)	Rb pAb	ELISA, FACS, ICC/IF, WB
GTX48679	V5 Epitope Tag antibody (DyLight649)	Rb pAb	ELISA, FACS, ICC/IF, WB
GTX30570	V5 antibody (Agarose)	Gt pAb	IP

Cre-LoxP system

Star Review Citation

Cat. No.	Product	Host & Clonality	Application
GTX127271	Cre recombinase antibody	Rb pAb	IP, WB
GTX629479	Cre recombinase antibody [GT10212]	Ms mAb	IP, WB

Luciferase antibody

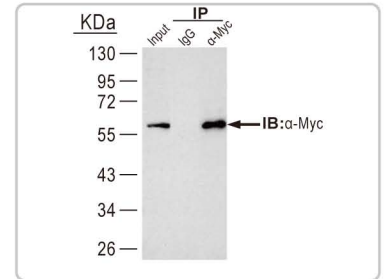
Star Review Citation

Cat. No.	Product	Host & Clonality	Application
GTX125848	Firefly Luciferase antibody	Rb pAb	WB
GTX125849	Firefly Luciferase antibody	Rb pAb	WB
GTX125852	Renilla Luciferase antibody	Rb pAb	WB
GTX125853	Renilla Luciferase antibody	Rb pAb	WB

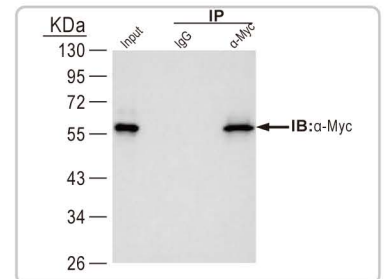
Other Tags

Star Review Citation

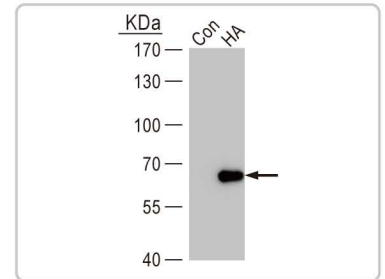
Cat. No.	Product	Host & Clonality	Application
GTX23401	AU1 tag antibody	Rb pAb	ELISA, ICC/IF, WB
GTX23400	AU1 tag antibody	Gt pAb	ELISA, ICC/IF, WB
GTX23405	AU5 tag antibody	Rb pAb	ELISA, ICC/IF, WB
GTX23404	AU5 tag antibody	Gt pAb	ELISA, ICC/IF, WB
GTX23397	E tag antibody	Rb pAb	ELISA, WB
GTX19368	E tag antibody (Agarose)	Gt pAb	IP
GTX30537	Glu-Glu tag antibody	Rb pAb	ELISA, ICC/IF, IHC, WB
GTX30789	Glu-Glu antibody [Glu-Glu]	Ms mAb	ICC/IF, IHC, IP, WB
GTX21267	Glu-Glu tag antibody (HRP)	Gt pAb	ELISA, ICC/IF, IHC, WB
GTX23414	HSV tag antibody	Rb pAb	ELISA, WB



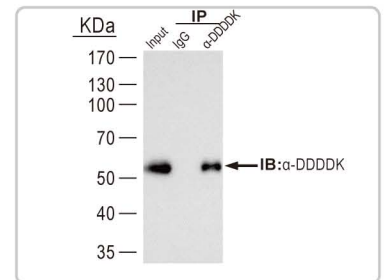
Myc Tag antibody (GTX115046): IP analysis with Myc Tag antibody on whole cell lysate of HeLa cells expressing Myc-tagged protein.



Myc Tag antibody [GT0002] (GTX628259): IP analysis with Myc Tag antibody on whole cell lysate of HeLa cells expressing Myc-tagged protein.



HA Tag antibody [GT423] (GTX628489): WB analysis with HA Tag antibody on (A) non-transfected HeLa cells and (B) HeLa cells expressing HA-tagged protein.



DDDDK Tag antibody [GT231] (GTX629631): IP analysis with DDDDK Tag antibody on whole cell lysate of 293T cells expressing DDDDK-tagged protein.