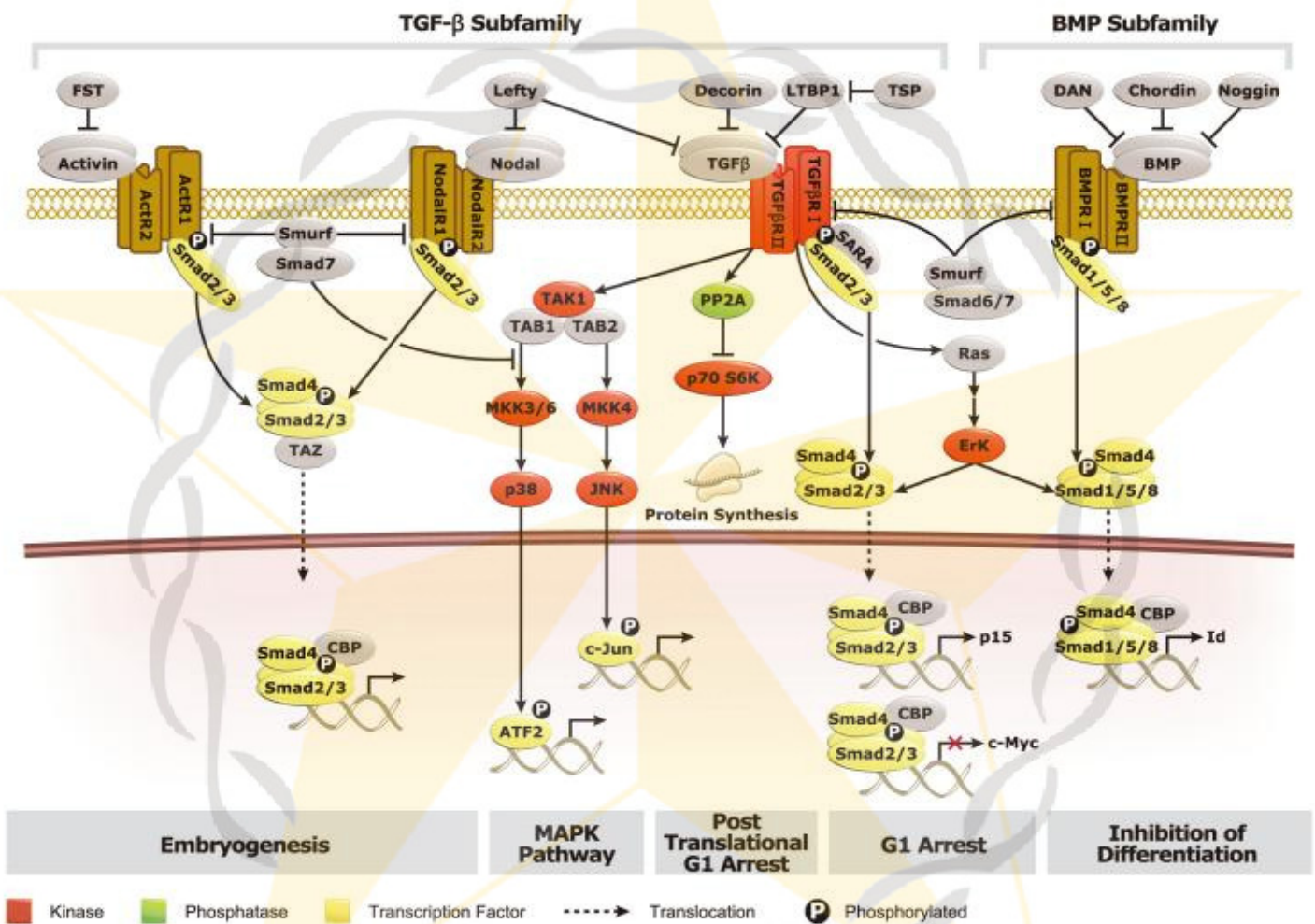
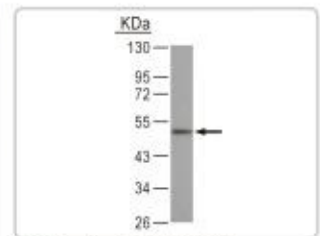


TGF- β Superfamily

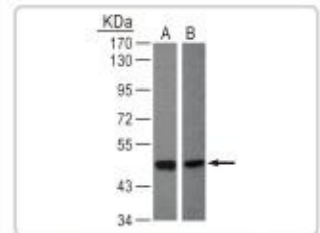


The transforming growth factor β (TGF- β) superfamily is composed of more than 30 soluble dimeric cytokines. This superfamily can be divided into the TGF- β subfamily, which includes TGF- β , activin and nodal, and the BMP (bone morphogenetic protein) subfamily, which includes the BMPs, anti-Muellerian hormone (AMH) and growth-differentiation factors (GDFs). The receptors for TGF- β proteins are formed by combinations of type I and type II transmembrane serine/threonine kinases. Upon stimulation by a TGF- β ligand, these receptors autophosphorylate and recruit adaptor proteins, which transduce signals to the nucleus via the Smad family of proteins. The initiation of TGF- β signaling requires the activation of latent TGF- β through either proteolytic cleavage or biochemical modifications to the latent TGF- β complex. TGF- β plays a dual role in the development of cancer, acting as both a tumor suppressor and a promoter of cancer progression, metastasis and immune evasion. Additionally, members of the TGF- β family (especially Nodal and BMP) play a critical role in early embryonic development, the germ layer specification and the regulation of stem cell fate.

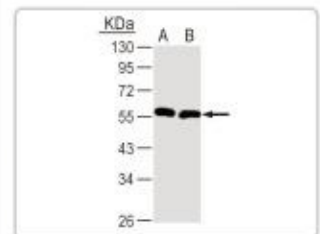
Cat. No.	Product	Host & Clonality	Reactivity	Application
GTX88867	ActR1 antibody	Gt pAb	Hu, Ms, Dog, Rat	ELISA, IHC, WB
GTX114053	ActR2 antibody	Rb pAb	Hu	WB
GTX105330	ActR2B antibody	Rb pAb	Hu	WB
GTX10855	BMP1 antibody	Rb pAb	Hu	WB
GTX26285	BMP2 antibody [65529.111]	Ms mAb	Hu	I-ELISA, WB
GTX59646	BMP3 antibody	Gt pAb	Hu	IHC, WB
GTX100875	BMP4 antibody	Rb pAb	Hu	ICC/IF, WB
GTX10858	BMP5 antibody	Gt pAb	Hu, Rat	ELISA, ICC/IF, IHC, WB
GTX106182	BMP6 antibody	Rb pAb	Hu	WB
GTX59894	BMP7 antibody	Rb pAb	Hu, Ms, Rat	WB
GTX108555	BMP8A antibody	Rb pAb	Hu, Ms	ICC/IF, WB, ELISA-Ag
GTX108417	BMP9 antibody	Rb pAb	Hu	WB, ELISA-Ag
GTX108409	BMP10 antibody	Rb pAb	Hu	WB, ELISA-Ag
GTX59685	BMP12 antibody	Rb pAb	Hu	WB
GTX59686	BMP13 antibody	Rb pAb	Hu	WB
GTX108415	BMP14/GDF5 antibody	Rb pAb	Hu	WB, ELISA-Ag
GTX110245	BMP15/GDF9 antibody	Rb pAb	Hu	WB
GTX100823	BMPR1A antibody	Rb pAb	Hu, Ms	IHC-P, WB
GTX102453	BMPR1B antibody	Rb pAb	Hu	WB
GTX10862	BMPR2 antibody	Gt pAb	Hu, Ms	ELISA, WB
GTX101247	Decorin antibody	Rb pAb	Hu, Ms	ICC/IF, WB
GTX59740	Follistatin antibody	Rb pAb	Hu	WB
GTX108405	Inhibin β A antibody	Rb pAb	Hu	ICC/IF, IHC-P, WB
GTX108408	Inhibin β B antibody	Rb pAb	Hu	ICC/IF, WB
GTX101582	Lefty-A antibody	Rb pAb	Hu	WB
GTX117811	Lefty-B antibody	Rb pAb	Hu	WB
GTX61735	Nodal antibody [EP2058Y]	Rb mAb	Hu, Ms	FACS, WB
GTX61614	Noggin antibody	Rb pAb	Hu	FACS, IP, WB
GTX121941	Smad1/5/8 antibody	Rb pAb	Hu	WB
GTX61279	Smad1 antibody [EP565Y]	Rb mAb	Hu, Ms	ICC/IF, IHC-M, WB
GTX111131	Smad2 antibody	Rb pAb	Hu	ICC/IF, WB
GTX61362	Smad2 antibody [EP784Y]	Rb mAb	Hu, Rat	FACS, ICC/IF, IHC, IP, WB
GTX25487	Smad2 (phospho T8) antibody	Rb pAb	Hu, Ms, Rat	WB
GTX108638	Smad3 antibody	Rb pAb	Hu, Ms	WB
GTX61361	Smad3 antibody [EP568Y]	Rb mAb	Hu, Rat	ICC/IF, IHC, IHC-M, IP, WB
GTX61485	Smad3 (phospho S423/425) antibody [EP823Y]	Rb mAb	Hu, Ms	ICC/IF, IHC, IHC-M, WB
GTX112980	Smad4 antibody	Rb pAb	Hu	ICC/IF, WB
GTX61305	Smad4 (C-term) antibody [EP618Y]	Rb mAb	Hu, Ms, Rat	FACS, ICC/IF, IHC, IP, WB
GTX61311	Smad5 antibody [EP619Y]	Rb mAb	Hu, Ms, Rat	FACS, ICC/IF, WB
GTX62292	Smad5 (phospho S463/465) antibody [MMC-1-104-3]	Rb mAb	Hu, Ms, Rat	ICC/IF, IHC, IHC-M, WB
GTX77884	Smad6 antibody	Rb pAb	Hu	IHC-P, WB
GTX59874	Smad7 antibody	Rb pAb	Hu, Ms, Rat	WB
GTX114540	Smad8 antibody	Rb pAb	Hu	WB
GTX89472	Smurf1 antibody	Gt pAb	Hu	ELISA
GTX110487	Smurf2 antibody	Rb pAb	Hu	ICC/IF, WB
GTX61668	Smurf2 antibody [EP629Y3]	Rb mAb	Hu, Ms, Rat	WB
GTX21279	TGF- β antibody [TB21]	Ms mAb	Hu	ELISA, ICC/IF, IHC-Fr, IHC-P, Neut, WB
GTX15539	TGF- β 2 antibody	Rb pAb	Hu, Ms, Rat	IHC-P, IP, WB
GTX15537	TGF- β 3 antibody	Rb pAb	Hu, Ms, Rat	IHC-P, IP, WB
GTX102784	TGF β R1 antibody	Rb pAb	Hu	WB
GTX59893	TGF β R2 antibody	Rb pAb	Hu, Ms, Rat	WB
GTX47552	TSP3 antibody	Gt pAb	Hu, Ms, Cow, Dog, Pig	ELISA
GTX87694	TSP4 antibody	Rb pAb	Hu	ELISA, IHC
GTX11056	TSP5/COMP antibody [MA37C94 (HC484D1)]	Rat mAb	Hu	ELISA, IHC-Fr, IHC-P, IP



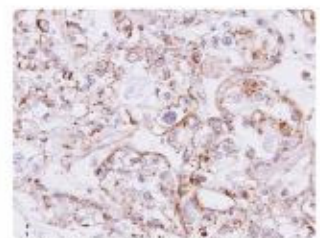
BMP4 antibody (GTX100875):
WB analysis of A431 whole cell lysate.



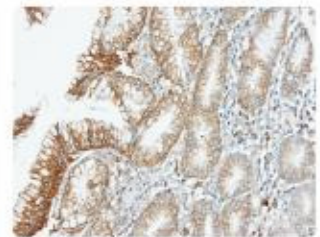
BMP8A antibody (GTX108555):
WB analysis of whole cell lysate. A) H1299, B) Raji.



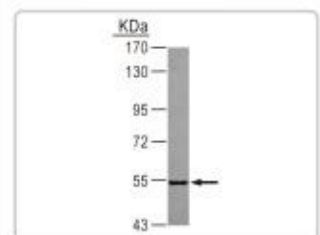
BMP9 antibody (GTX108417):
WB analysis of whole cell lysate. A) H1299, B) Hep G2.



Inhibin β A antibody (GTX108405):
IHC analysis of paraffin-embedded OVCA xenograft.



BMPR1A antibody (GTX100823):
IHC analysis of paraffin-embedded gastric CA.



TGF β R1 antibody (GTX102784):
WB analysis of HeLa whole cell lysate.