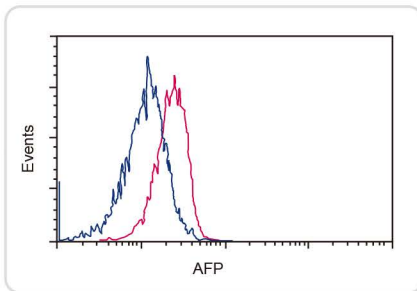
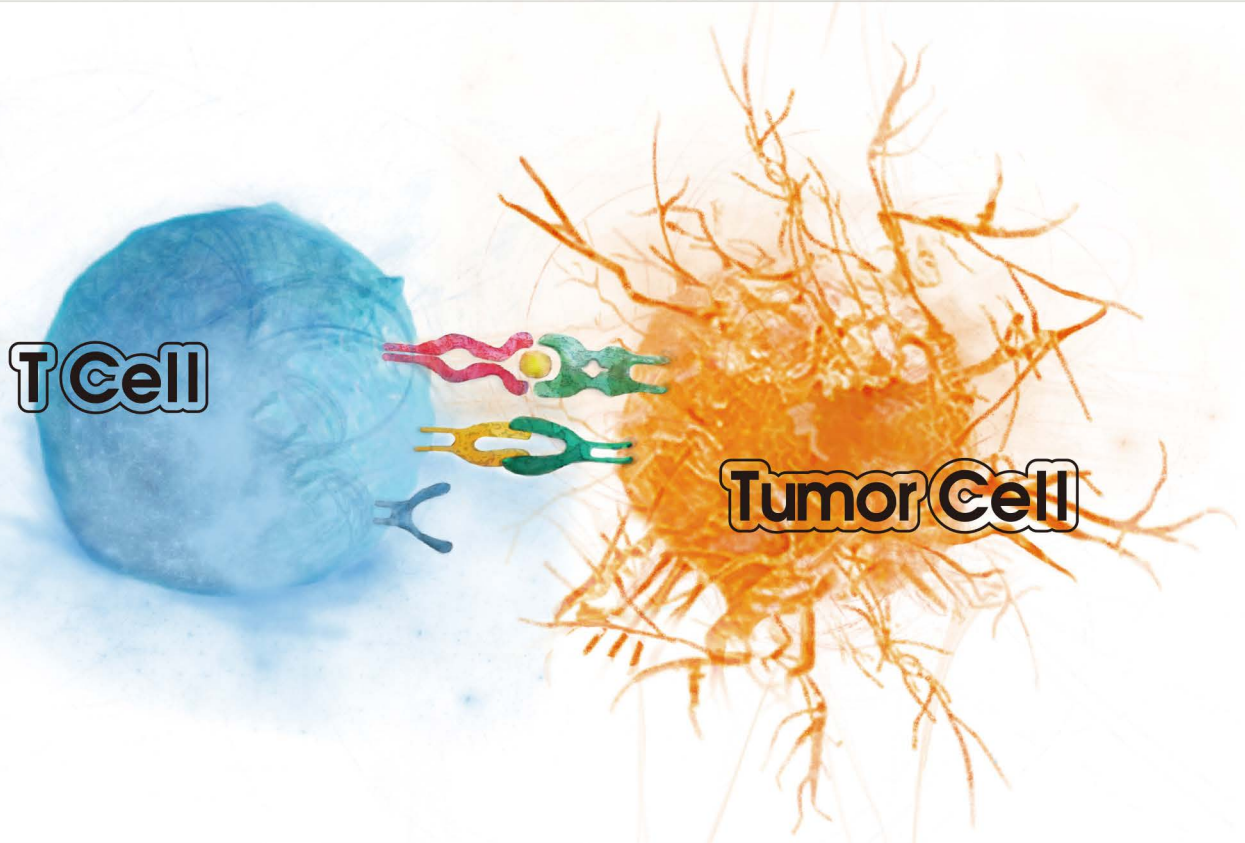
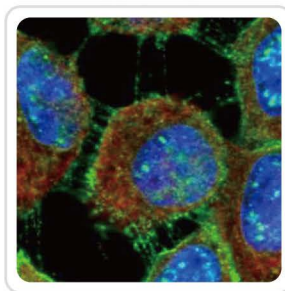


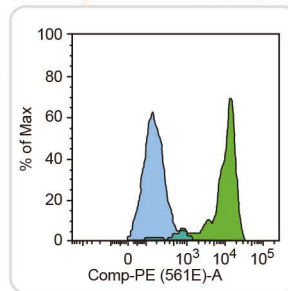
Tumor-associated Antigens



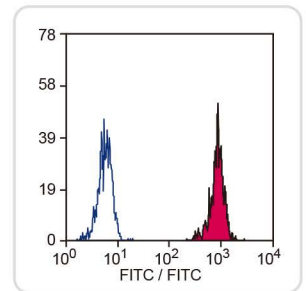
AFP antibody [2A9] (GTX84954)



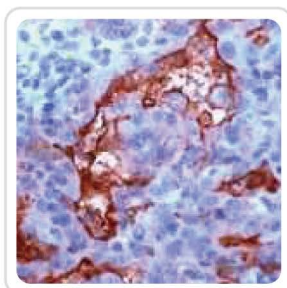
MUC1 antibody (GTX100459)



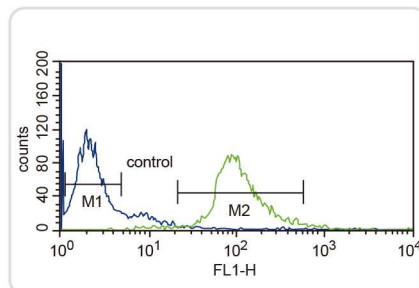
GCPII (folate hydrolase 1) antibody [GCP-05] (GTX80149)



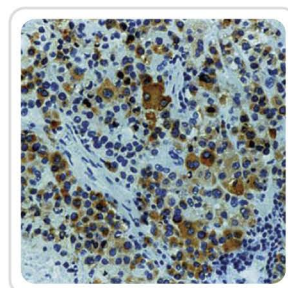
HLA-A,B,C antibody [W6/32] (GTX76545)



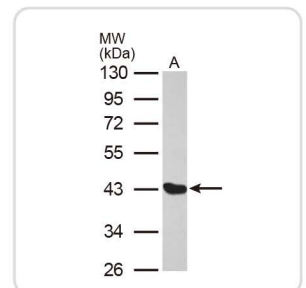
CA125 antibody [SPM111] (GTX15142)



DCT (TRP2) antibody, N-term (GTX81039)



Melan A antibody [A103] (GTX20785)



MAGE 1 antibody [N1C3] (GTX103961)

	Cat. No.	Product Name	Host & Clonality	Reactivity	Application
Citation	GTX110204	ADFP antibody [N1C2]	Rb pAb	Hu	WB
	GTX84953	AFP antibody [1E8]	Ms mAb	Hu	FACS, IHC, IHC-P, WB
	GTX84954	AFP antibody [2A9]	Ms mAb	Hu, Dog, Mk	FACS, ICC/IF, IHC, IHC-P, WB
	GTX116487	AIM2 antibody	Rb pAb	Hu	WB
	GTX88186	AIM2 antibody, C-term	Gt pAb	Hu	ELISA, IHC-P, WB
	GTX59665	ALK antibody	Rb pAb	Hu	WB
	GTX81366	ALK antibody, Internal	Rb pAb	Hu	IHC-P, WB
	GTX17240	alpha Fetoprotein antibody [C3]	Ms mAb	Hu, Dog, Pig	IHC-P
	GTX60339	AML1-ETO antibody - ChIP grade	Rb pAb	Hu	ELISA, WB, ChIP assay, ChIP-seq
	GTX101902	Annexin II antibody	Rb pAb	Hu, Ms, Rat	ICC/IF, IHC-P, WB
	GTX100046	Annexin II antibody [N1], N-term	Rb pAb	Hu	ICC/IF, IHC-P, WB
	GTX87618	BAGE2 antibody	Rb pAb	Hu	ELISA, IHC, IHC-P
	GTX87811	BAGE3 antibody	Rb pAb	Hu	ELISA, IHC, IHC-P
	GTX87778	BAGE4 antibody	Rb pAb	Hu	ELISA, IHC, IHC-P
Citation	GTX101254	beta Catenin antibody	Rb pAb	Hu, Ms	ICC/IF, IHC-P, WB
Citation	GTX61089	beta Catenin antibody [E247], N-term	Rb mAb	Hu, Ms, Rat	ICC/IF, IHC-M, IHC-P, IP, WB
Citation	GTX101435	beta Catenin antibody [N1N2-2], N-term	Rb pAb	Hu, Ms, Rat	ICC/IF, IHC-P, IP, WB, ChIP assay
	GTX84822	BIRC7 antibody [1B10]	Ms mAb	Hu	FACS, ICC/IF, WB
	GTX84823	BIRC7 antibody [1D12]	Ms mAb	Hu	FACS, IHC, IHC-P, WB
	GTX15142	CA125 antibody [SPM111]	Ms mAb	Hu	IHC, IHC-P
	GTX75542	CA-125 antibody [OC125]	Ms mAb	Hu	IHC-F, IHC-Fr, IHC-P
Citation	GTX75539	CA19-9 antibody [1116-NS-19-9]	Ms mAb	Hu	FACS, IHC-Fr, IHC-P
Citation	GTX70020	CAIX antibody [GT12]	Ms mAb	Hu	FACS, ICC/IF, IHC, IHC-P, IP, WB
Citation	GTX110723	Caspase 8 antibody	Rb pAb	Hu	IHC-P, WB
	GTX100905	Caspase 8 antibody [N1C1]	Rb pAb	Hu	ICC/IF, IHC-P, WB
	GTX111249	CDC27 antibody	Rb pAb	Hu	WB
	GTX82818	CDC27 antibody [5C12]	Ms mAb	Hu	ELISA, IHC, IHC-P, WB
	GTX10538	CDC27 antibody [AF3.1]	Ms mAb	Hu, Ms, Cow, Dog, Rat, XI	Apurif, ELISA, IHC-Fr, IHC-P, WB
Citation	GTX102993	CDK4 antibody	Rb pAb	Hu, Ms	ICC/IF, IHC-P, WB
	GTX60388	CEA antibody [3G12]	Ms mAb	Hu	ELISA, ICC/IF, WB
	GTX17254	CEA antibody [Col-1]	Ms mAb	Hu	IHC-P, IP, WB
	GTX17238	CEA antibody [Col-1] (ready-to-use)	Ms mAb	Hu	IHC-F, IHC-Fr, IHC-P
	GTX104337	CES2 antibody	Rb pAb	Hu	ICC/IF, IHC-P, WB
	GTX51601	CTAG1B (NY-ESO-1) antibody	Rb pAb	Hu	ELISA, ICC/IF, IHC-F, IHC-P, IP, WB
	GTX51753	CTAG2 (CAMEL) antibody	Rb pAb	Hu	ELISA, ICC/IF, IHC-F, IHC-P, IP, WB
	GTX81039	DCT (TRP2) antibody, N-term	Rb pAb	Hu	ELISA, FACS, IHC, IHC-P, WB
	GTX84574	EpCAM antibody [4G10]	Ms mAb	Hu	ICC/IF, IHC, IHC-P, WB
	GTX113091	EpCAM antibody [N3C3]	Rb pAb	Hu	IHC-P, WB
Citation	GTX28667	EpCAM antibody [VU-1D9]	Ms mAb	Hu	FACS, ICC/IF, IHC-Fr, IHC-P, WB
	GTX83159	EphA2 antibody [1B3C7]	Ms mAb	Hu	ELISA, IHC, IHC-P, WB
	GTX53140	EphA2 antibody [8F21]	Rat mAb	Ms	IHC, WB
	GTX83180	EphA3 antibody [6C1B6]	Ms mAb	Hu	ELISA, WB
	GTX81361	EphA3 antibody, N-term	Rb pAb	Hu	ELISA, IHC, IHC-P, WB
	GTX27043	Ephrin B2 antibody	Gt pAb	Ms	I-ELISA, WB
	GTX117479	ErbB2 antibody	Rb pAb	Hu, Ms	IHC-P, IP, WB
	GTX100509	ErbB2 antibody [C2C3], C-term	Rb pAb	Hu	IHC-P, WB
	GTX629807	ErbB2 antibody [GT1966]	Ms mAb	Hu	WB
	GTX629808	ErbB2 antibody [GT2025]	Ms mAb	Hu	WB
	GTX37699	FGF5 antibody	Rb pAb	Hu, Ms, Rat	ELISA, WB
	GTX52742	FGF5 antibody [8M27]	Ms mAb	Hu	IHC, WB
	GTX52743	FGF6 (HST2) antibody [8N21]	Ms mAb	Hu	ELISA, Neut
Citation	GTX61206	Fibronectin antibody [F1]	Rb mAb	Hu	IHC-P, IP, WB
Citation	GTX112794	Fibronectin antibody [N1N2], N-term	Rb pAb	Hu	ICC/IF, IHC-P, IP, WB
	GTX80149	GCP11 (folate hydrolase 1) antibody [GCP-05]	Ms mAb	Hu	FACS, ICC/IF, IP
	GTX38573	HER2 (phospho Tyr1248) antibody	Rb pAb	Hu, Ms, Rat	ICC/IF, IHC-P, WB
	GTX50146	HER2 (phospho Tyr1248) antibody	Rb pAb	Hu, Ms, Rat	ICC/IF, IHC, IHC-P, WB
	GTX50142	HER2 (phospho Tyr877) antibody	Rb pAb	Hu, Ms, Rat	ICC/IF, IHC, IHC-P, WB
	GTX114080	HLA-A antibody [N1C2]	Rb pAb	Hu	IP, WB
	GTX76545	HLA-A, HLA-B + HLA-C antibody [W6/32]	Ms mAb	Mk, Bb, Cat	ELISA, FACS, IHC-Fr, IP
	GTX116041	H-Ras antibody	Rb pAb	Hu, Rat	ICC/IF, IHC-P, WB
Citation	GTX111088	HSP70 1A antibody	Rb pAb	Hu, Ms	ICC/IF, IHC-P, IP, WB

Cat. No.	Product Name	Host & Clonality	Reactivity	Application
GTX104126	HSP70 1A antibody	Rb pAb	Hu, Ms, Rat	ICC/IF, IHC-P, IP, WB
GTX106148	HSP70 1B antibody	Rb pAb	Hu	ICC/IF, IHC-P, WB
GTX111045	HSP70 1L antibody [N1N3]	Rb pAb	Hu	ICC/IF, IHC-P, WB
GTX112329	HSP70 4 antibody [N1N3]	Rb pAb	Hu	IHC-P, WB
Citation GTX23148	Hsp70 antibody [W27]	Ms mAb	Hu, Cow, Mk	FACS, ICC/IF, IHC-P, IP, WB
Citation GTX61173	hTERT antibody [Y182], C-term	Rb mAb	Hu	FACS, WB
GTX101138	IL2 antibody	Rb pAb	Hu	IHC-P, WB
GTX52820	IL-13 R alpha 2 antibody [11S23]	Ms mAb	Hu	WB
GTX53192	IL-13 R alpha2 antibody [8F16]	Rat mAb	Ms	WB
GTX105788	IL13 Receptor alpha 1 antibody	Rb pAb	Hu	IHC-P, WB
GTX114494	IL13 receptor alpha 1 antibody [N1C1]	Rb pAb	Hu	WB
GTX100527	K-Ras antibody	Rb pAb	Hu, Ms	ICC/IF, IHC-P, WB
GTX100636	K-Ras antibody [N1N3]	Rb pAb	Hu	ELISA, ICC/IF, IHC-P, IP, WB
GTX61553	LDL Receptor antibody [EP1553Y], C-term	Rb mAb	Hu, Ms, Rat	FACS, ICC/IF, IHC-P, IP, WB
GTX85109	LDL-R antibody	Chk pAb	Hu, Ms, Rat	ELISA, IHC, WB
GTX53064	LDLR antibody [11A2]	Ms mAb	Hu	ELISA, FACS, WB
GTX80914	LDLR antibody, Internal	Rb pAb	Hu	ELISA, FACS, WB
GTX114132	Livin antibody	Rb pAb	Hu	ICC/IF, IHC-P, WB
GTX41472	MAGE 1 antibody	Rb pAb	Hu	ELISA, ICC/IF, IHC-F, IP, WB
GTX103961	MAGE 1 antibody [N1C3]	Rb pAb	Hu	ICC/IF, WB
Citation GTX118244	MAGEA3 antibody [N2C3]	Rb pAb	Hu	WB
GTX116357	MAGEA4 antibody	Rb pAb	Hu	ICC/IF, IHC-P, WB
GTX105112	MAGEB1 (DAM10) antibody	Rb pAb	Hu	IHC-P, WB
GTX51757	MAGEE1 antibody	Rb pAb	Hu, Ms, Rat	ELISA
GTX88957	Mammaglobin A / SCGB2A2 antibody, Internal	Gt pAb	Hu	ELISA, IHC, IHC-P
GTX72313	MART1 antibody [M2-7C10]	Ms mAb	Hu	ICC/IF, IHC, IP, WB
Citation GTX108190	MC1 Receptor antibody [C2C3], C-term	Rb pAb	Hu, Ms	IHC-P, WB
GTX63694	MC1R antibody [EPR6530]	Rb mAb	Hu	IHC, IHC-P, WB
GTX37623	MCSF antibody	Rb pAb	Hu, Ms, Rat	ELISA, WB
GTX81364	MCSF Receptor antibody, C-term	Rb pAb	Hu	ELISA, FACS, IHC, IHC-P, WB
GTX104122	ME1 antibody	Rb pAb	Hu, Ms, Rat	ICC/IF, IHC-P, WB
GTX15468	Melan A antibody	Rb pAb	Hu	IHC-P
GTX20785	Melan A antibody [A103]	Ms mAb	Hu, Ms	IHC, IHC-P, IP, WB
GTX75784	Melan A antibody [A103]	Ms mAb	Hu	IHC-Fr, IHC-P, WB
GTX115439	MRPL28 antibody [N2C3]	Rb pAb	Hu	IHC-P, WB
GTX100459	MUC1 antibody	Rb pAb	Hu	ICC/IF, IHC-P, WB
GTX62437	MUC1 antibody [EPR1023], C-term	Rb mAb	Hu	FACS, ICC/IF, IHC-P, IP, WB
Citation GTX20697	MUC16 antibody [OV185.1]	Ms mAb	Hu	IHC-P
Citation GTX10029	MUC16 antibody [X75]	Ms mAb	Hu	ELISA, FACS, IHC-P, WB
GTX11197	MUC2 antibody [996/1]	Ms mAb	Hu	FACS, IHC-Fr, IHC-P, WB
Citation GTX100664	MUC2 antibody [C3], C-term	Rb pAb	Hu	ICC/IF, IHC, IHC-P, WB
GTX63560	MUC2 antibody [EPR6145]	Rb mAb	Hu, Rat	FACS, ICC/IF, IHC, IHC-P, IP, WB
GTX82832	MUM1 antibody [4G10]	Ms mAb	Hu	ELISA, IHC, IHC-P, WB
GTX125947	Myosin 1C antibody	Rb pAb	Hu	IHC-P, WB
GTX110081	myosin IA antibody [N2C1], Internal	Rb pAb	Hu	IHC-P, WB
GTX102930	Myosin Light Chain 3 antibody [N1C3]	Rb pAb	Hu, Ms	WB
GTX63108	NPM (phospho Ser125) antibody [EPR1856]	Rb mAb	Hu, Ms, Rat	ICC/IF, IHC-M, IHC-P, IP
GTX61672	NPM (phospho Thr199) antibody [EP1857Y]	Rb mAb	Hu	ICC/IF, IHC-P, IP, WB
GTX61634	NPM antibody [EP1848Y], N-term	Rb mAb	Hu	FACS, IHC-P, IP, WB
GTX81996	NPM1 antibody, N-term	Rb pAb	Hu	ELISA, FACS, ICC/IF, IHC, IHC-P, WB
GTX108598	N-Ras antibody	Rb pAb	Ms	WB
GTX83217	Nucleophosmin antibody [7H10B9]	Ms mAb	Hu, Mk	ELISA, ICC/IF, IHC, IHC-P, WB
GTX88483	NY-ESO-1 antibody, Internal	Gt pAb	Hu	ELISA
GTX13070	OA1 antibody	Rb pAb	Hu	IHC-P
Citation GTX109939	O-GlcNAc transferase antibody	Rb pAb	Hu, Ms, Rat	ICC/IF, IHC-P, WB
GTX629813	O-GlcNAc transferase antibody [GT2037]	Ms mAb	Hu, Ms, Rat	WB
GTX629812	O-GlcNAc transferase antibody [GT678]	Ms mAb	Hu, Ms, Rat	ICC/IF, WB
GTX110136	O-GlcNAc transferase antibody [N1N2], N-term	Rb pAb	Hu, Ms	IHC-P, WB
GTX63126	OS-9 antibody [EPR4272(2)], C-term	Rb mAb	Hu, Ms, Rat	ICC/IF, IHC-M, IHC-P, IP, WB
GTX117515	p53 (mono-Methyl K372) antibody	Rb pAb	Hu	ICC/IF, IHC-P, WB
Citation GTX102965	p53 antibody	Rb pAb	Hu	ICC/IF, IHC-P, IP, WB, ChIP assay

	Cat. No.	Product Name	Host & Clonality	Reactivity	Application
Citation	GTX70214	p53 antibody [D01]	Ms mAb	Hu	IHC-Fr, IHC-P, IP, WB, ChIP assay
Citation	GTX70216	p53 antibody [Pab1801]	Ms mAb	Hu	ELISA, FACS, IHC-Fr, IHC-P, IP, RIA, WB, ChIP assay
	GTX85463	PAP antibody	Chk pAb	Hu, Ms	ICC/IF, IHC
	GTX17793	PAP antibody [SPM312] (ready-to-use)	Ms mAb	Hu, Dog, Rat, Rb	IHC, IHC-P
	GTX83101	PEG10 antibody [1B1C4]	Ms mAb	Hu	ELISA, ICC/IF, IHC-P, WB
	GTX83100	PEG10 antibody [4C10A7]	Ms mAb	Hu	ELISA, IHC, IHC-P, WB
	GTX112996	PML antibody [N1N2], N-term	Rb pAb	Hu	WB
	GTX63898	PML Phospho (phospho Ser518) antibody [EPR6151]	Rb mAb	Hu, Ms	IHC, IHC-M, WB
	GTX106248	PRAME antibody [N1C2]	Rb pAb	Hu	WB
	GTX83052	PSA (KLK3) antibody [5A11E9,5A11E2]	Ms mAb	Hu	ELISA, FACS, IHC, IHC-P, WB
Citation	GTX72905	PSA antibody	Rb pAb	Hu	ELISA, IHC, IHC-Fr, IHC-P
	GTX22218	PSA antibody [A67-B/E3]	Ms mAb	Hu	ELISA, IHC-P, WB
	GTX15168	PSCA antibody	Rb pAb	Hu	IHC, IHC-P
	GTX63637	PSMA antibody [EPR6253]	Rb mAb	Hu	ICC/IF, IHC, IHC-P, IP, WB
Citation	GTX19071	PSMA antibody [YPSMA-1]	Ms mAb	Hu	ELISA, ICC/IF, IHC-Fr, IHC-P, WB
	GTX114004	Prostatic Acid Phosphatase antibody [N3C3]	Rb pAb	Hu	WB
	GTX62762	Prostatic Acid Phosphatase antibody [EPR4067]	Rb mAb	Hu, Ms	ICC/IF, IHC-P, IP, WB
	GTX85463	PAP antibody	Chk pAb	Hu, Ms	ICC/IF, IHC
Citation	GTX23611	RAGE antibody	Rb pAb	Hu, Ms, Rat	ICC/IF, IHC, IHC-F, WB
	GTX62163	RUNX1 / AML1 + RUNX3 + RUNX2 [EPR3099] antibody	Rb mAb	Hu, Ms, Rat	FACS, ICC/IF, IHC-P, IP, WB
	GTX103371	SART1 antibody [N2C1], Internal	Rb pAb	Hu, Ms	ICC/IF, IHC-P, WB
	GTX107684	SART3 antibody [C3], C-term	Rb pAb	Hu	ICC/IF, IHC-P, IP, WB
	GTX116167	SFMBT1 antibody [N1N2], N-term	Rb pAb	Hu	WB
	GTX83638	SILV (gp100) antibody [10E5]	Ms mAb	Hu, Dog, Mk, Rat	FACS, ICC/IF, IHC, IHC-P, WB
	GTX83640	SILV (gp100) antibody [10E5]	Ms mAb	Hu, Dog, Mk, Rat	ICC/IF, WB
	GTX83554	SSX2 antibody [4A11]	Ms mAb	Hu	ICC/IF, IHC, IHC-P, WB
	GTX83555	SSX2 antibody [4D10]	Ms mAb	Hu	ICC/IF, IHC, IHC-P, WB
Citation	GTX100052	Survivin antibody	Rb pAb	Hu	ICC/IF, IHC-P, WB
	GTX100441	Survivin antibody	Rb pAb	Hu, Ms	ICC/IF, IHC-P, WB
	GTX50852	SYT antibody	Rb pAb	Hu, Ms, Rat	WB
	GTX79233	TCR V gamma 9 antibody [7A5]	Ms mAb	Hu	FACS, IHC-F, IP, Neut
	GTX79224	TCR V gamma 9 antibody [7A5] (FITC)	Ms mAb	Hu	FACS
	GTX77770	TEL antibody	Rb pAb	Hu	WB
	GTX105673	TEL antibody [N1N3]	Rb pAb	Hu	WB
Citation	GTX30410	TERT antibody [2C4]	Ms mAb	Hu	FACS, ICC/IF, IHC, IHC-P, WB, WB-Ag
	GTX25405	TERT antibody [2D8]	Ms mAb	Hu	FACS, ICC/IF, WB
	GTX124242	TERT antibody [C2C3-2], C-term	Rb pAb	Hu	WB
	GTX129103	TGF alpha antibody	Rb pAb	Hu	IHC-P, WB
Citation	GTX16768	TGF alpha antibody [213-4.4]	Ms mAb	Hu, Ms, Dog, Rat, Hm	ICC/IF, IHC, IHC-Fr, IHC-P, WB
Citation	GTX110630	TGF beta 1 antibody	Rb pAb	Hu, Ms, Rat	IHC-P, WB
Citation	GTX76527	TGF beta antibody [TB21]	Ms mAb	Hu, Rat, Shp	IHC, IHC-Fr, IHC-P
	GTX37527	TGF beta Receptor 2 antibody	Rb pAb	Hu, Ms, Rat	ELISA, IHC-P, WB
Citation	GTX102784	TGF beta Receptor I antibody	Rb pAb	Hu, Rat	ICC/IF, IHC-P, WB
	GTX109068	TGF beta Receptor III antibody	Rb pAb	Hu	WB
Citation	GTX104618	Triosephosphate isomerase antibody [C2C3], C-term	Rb pAb	Hu, Ms, Rat	ICC/IF, IHC-P, WB
	GTX630778	Triosephosphate isomerase antibody [GT1111]	Ms mAb	Hu, Ms, Rat	WB
	GTX630779	Triosephosphate isomerase antibody [GT181]	Ms mAb	Hu, Ms, Rat	ICC/IF, WB
Citation	GTX11780	TRP1 antibody [Ta99]	Ms mAb	Hu	ICC/IF, IHC-Fr
	GTX101094	Tyrosinase antibody [N3C3]	Rb pAb	Hu	WB
Citation	GTX20738	Tyrosinase antibody [T311]	Ms mAb	Hu	IHC-P, WB
	GTX129357	VENTX (NA88A) antibody	Rb pAb	Hu, Ms	WB
	GTX85168	VENTX (NA88A) antibody	Rb pAb	Hu, Ms, Rat	ELISA, IHC, WB
Citation	GTX15249	Wilms Tumor 1 antibody	Rb pAb	Hu, Ms, Rat	IHC, IHC-P, IP, WB
	GTX30362	XAGE1 antibody	Rb pAb	Hu	IP, WB
	GTX89612	XAGE1 (Isoform 1d) / GAGED2 antibody, C-term	Gt pAb	Hu	ELISA, IHC-P



www.genetex.com

International

Tel 886.3.6208988
 Fax 886.3.6209098
 Address 6F-2, No.89, Dongmei Rd., Hsinchu 300, Taiwan (R.O.C.)
 E-mail international@genetex.com

USA

Toll-free 1.877.GeneTex(1.877.436.3839)
 Fax 1.949.309.2888
 Address 2456 Alton Parkway, Irvine, CA 92606 USA
 E-mail info@genetex.com



For more information please visit
www.Genetex.com