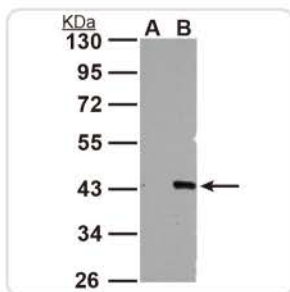
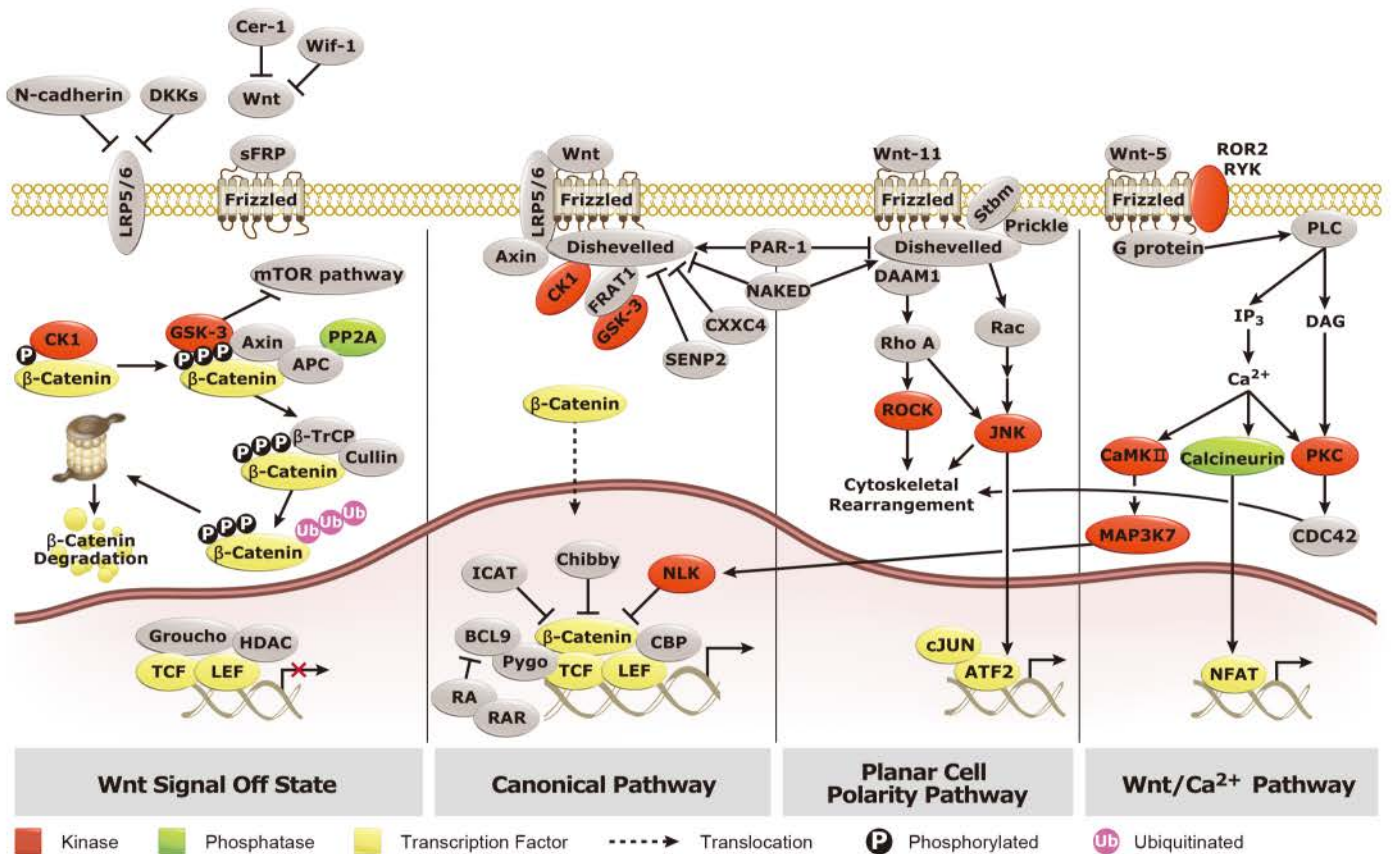
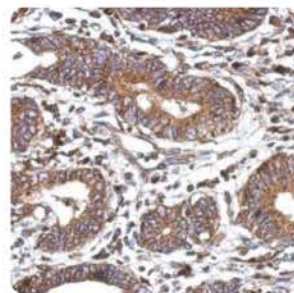


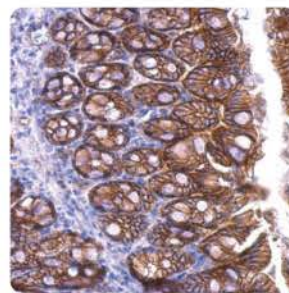
Wnt Pathway



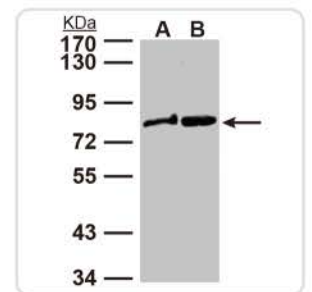
WNT3 antibody
(GTX105679)



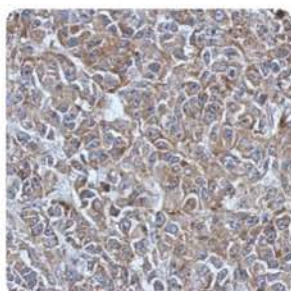
WNT6 antibody
(GTX101080)



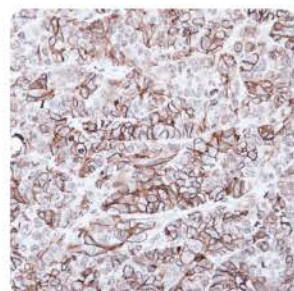
beta catenin antibody
(GTX101435)



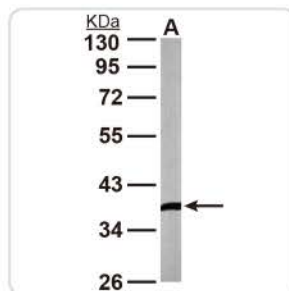
Dishevelled 2 antibody
(GTX103878)



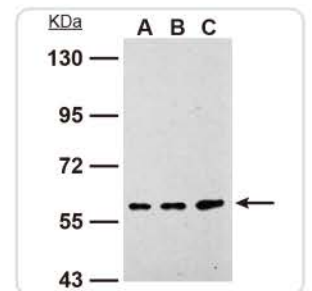
APC antibody
(GTX116009)



Frizzled 8 antibody
(GTX104679)



DKK3 antibody
(GTX100571)



GPR177 antibody
(GTX127903)

Cat. No.	Product Name	Host & Clonality	Reactivity	Application
GTX111182	WNT1 antibody	Rb	Hu	WB
GTX15251	WNT1 antibody	Rb	Hu, Ms, Rat	IHC, IHC-P, WB
GTX62603	WNT2 antibody [EPR3101(2)]	Rb	Hu, Ms, Rat	ICC/IF, IHC-M, IHC-P, IP, WB
GTX105679	WNT3 antibody	Rb	Hu, zfish	IHC-P, WB
GTX101085	WNT4 antibody	Rb	Hu	IHC-P, WB
GTX83127	WNT5A antibody [6F2]	Ms	Hu	ELISA, ICC/IF, IHC, WB
GTX85689	WNT5B antibody	Rb	Hu	IHC-P
GTX101080	WNT6 antibody	Rb	Hu	IHC-P, WB
GTX105680	WNT7A antibody	Rb	Hu	IHC-P, WB
GTX114881	WNT7B antibody	Rb	Hu	IHC-P, WB
GTX128108	WNT8A antibody	Rb	Hu	WB
GTX128109	WNT8B antibody	Rb	Hu	WB
GTX128110	WNT9A antibody	Rb	Hu	WB
GTX111893	WNT9B antibody	Rb	Hu	WB
GTX111191	WNT10A antibody [N1C1-2]	Rb	Hu	WB
GTX103633	WNT10B antibody [N3C3]	Rb	Hu, Ms	IHC-P, WB
GTX105971	WNT11 antibody	Rb	Hu, Ms	ICC/IF, IHC-P, WB
C GTX111230	GSK3 beta antibody	Rb	Hu, Ms	ICC/IF, IHC-P, WB
C GTX116009	APC antibody [C3], C-term	Rb	Hu	ICC/IF, IHC-P, WB
GTX104673	Axin 1 antibody [C3], C-term	Rb	Hu	WB
GTX62931	Axin-2 antibody [EPR2005(2)]	Rb	Hu, Ms, Rat	IP, WB
C GTX101435	beta Catenin antibody [N1N2-2], N-term	Rb	Hu, Ms, Rat	ICC/IF, IHC-P, WB
C GTX61089	beta Catenin antibody [E247], N-term	Rb	Hu, Ms, Rat	ICC/IF, IHC-M, IHC-P, IP, WB
GTX83185	beta Catenin antibody [4D5]	Ms	Hu	ELISA, FACS, ICC/IF, IHC-P, WB
GTX61984	beta Catenin (pS33/pS37) antibody [EP742(2)Y]	Rb	Hu	WB
GTX61958	beta Catenin (pT41/pT45) antibody [EP1905Y]	Rb	Hu	IP, WB
GTX108293	BCL3 antibody	Rb	Hu	ICC/IF, WB
C GTX103878	Dishevelled 2 antibody [N2C2], Internal	Rb	Hu, Ms	IHC, IHC-P, WB
C GTX102509	Dishevelled 3 antibody [N1N2], N-term	Rb	Hu, Ms	ICC/IF, IHC, IHC-P, WB
GTX62902	DKK1 antibody [EPR4759]	Rb	Hu, Rat	FACS, ICC/IF, IHC-M, IHC-P, WB
GTX41187	DKK2 antibody, C-term	Gt	Hu, Ms, Cow, Dog, Rat	ELISA, WB
GTX100571	DKK3 antibody [N1C3]	Rb	Hu, Ms	ICC/IF, WB
GTX89941	DKK4 antibody, C-term	Gt	Hu	ELISA, WB
GTX110492	FRAT1 antibody [C2C3], C-term	Rb	Hu	ICC/IF, IHC-P, WB
GTX22470	FRAT2 antibody	Gt	Hu	WB
GTX108181	Frizzled-1 antibody	Rb	Hu	WB
GTX88690	Frizzled 2 antibody, Internal	Gt	Hu, Ms, Rat	ELISA, IHC-P
C GTX100182	Frizzled 3 antibody	Rb	Hu	WB
GTX88836	Frizzled 4 antibody, Internal	Gt	Hu, Rat	ELISA, WB
GTX70689	Frizzled 5 antibody	Rb	Hu	IHC-P
GTX71521	Frizzled 6 antibody	Rb	Hu	ICC/IF, IHC-P
GTX12996	Frizzled 7 antibody	Rb	Hu	IHC-P
GTX104679	Frizzled 8 antibody	Rb	Hu	IHC-P, WB
GTX62572	CD349 / Frizzled-9 antibody [EPR4011]	Rb	Hu, Ms, Rat	WB
GTX100358	Frizzled 10 antibody	Rb	Hu, Ms	WB
GTX127903	GPR177 antibody	Rb	Hu	WB
GTX89521	LRP5 antibody, Internal	Gt	Hu, Ms, Rat	ELISA, IHC, IHC-P, WB
GTX111104	LRP6 antibody [N3C1], Internal	Rb	Hu	WB-Ag
GTX22572	LRP5 + LRP6 antibody [1A12]	Ms	Hu, Ms	WB
GTX88932	NKD2 antibody, Internal	Gt	Hu, Ms, Rat	ELISA
C GTX119726	pygopus 2 antibody	Rb	Hu, Ms	ICC/IF, IHC-P, IP, WB, ChIP assay
GTX102371	SFRP1 antibody [N3C3]	Rb	Hu	WB
GTX111892	FRP 2 antibody [C2C3], C-term	Rb	Hu	ICC/IF, IHC-P, WB
GTX88477	SFRP4 antibody, Internal	Gt	Hu, Ms, Cow, Pig, Rat	ELISA, IHC-P, WB
GTX70353	SFRP5 antibody	Rb	Hu	WB

C → Citation



International

Tel 886.3.6208988
 Fax 886.3.6209098
 Address 6F-2, No.89, Dongmei Rd., Hsinchu 300, Taiwan (R.O.C.)
 E-mail international@genetex.com

USA

Toll-free 1.877.GeneTex(1.877.436.3839)
 Fax 1.949.309.2888
 Address 2456 Alton Parkway, Irvine, CA 92606 USA
 E-mail info@genetex.com

